

FIELD CONNECTIONS

D

D

C

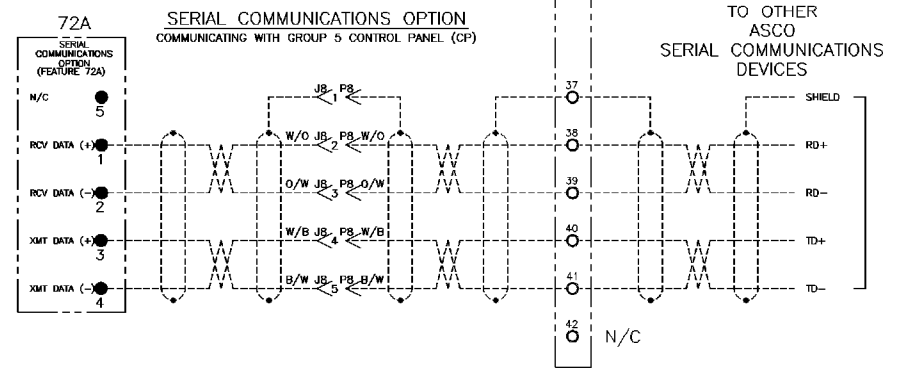
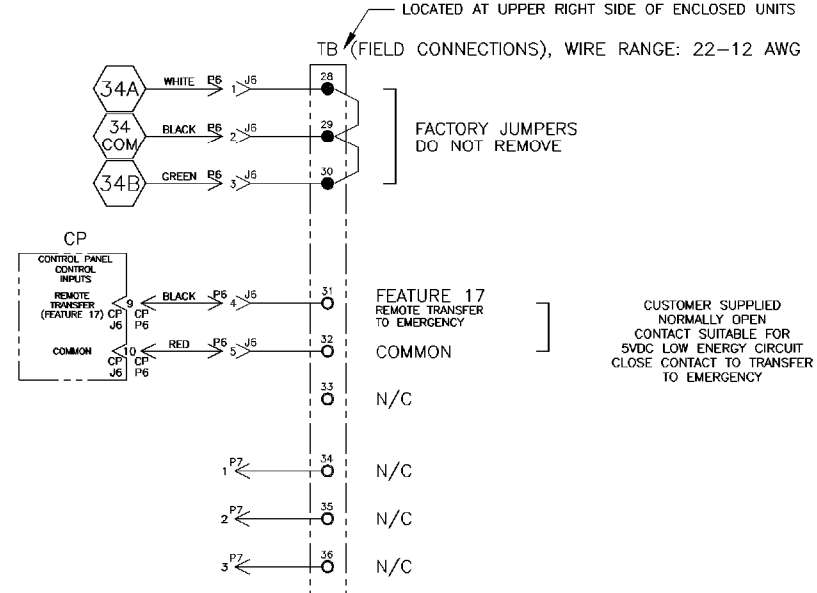
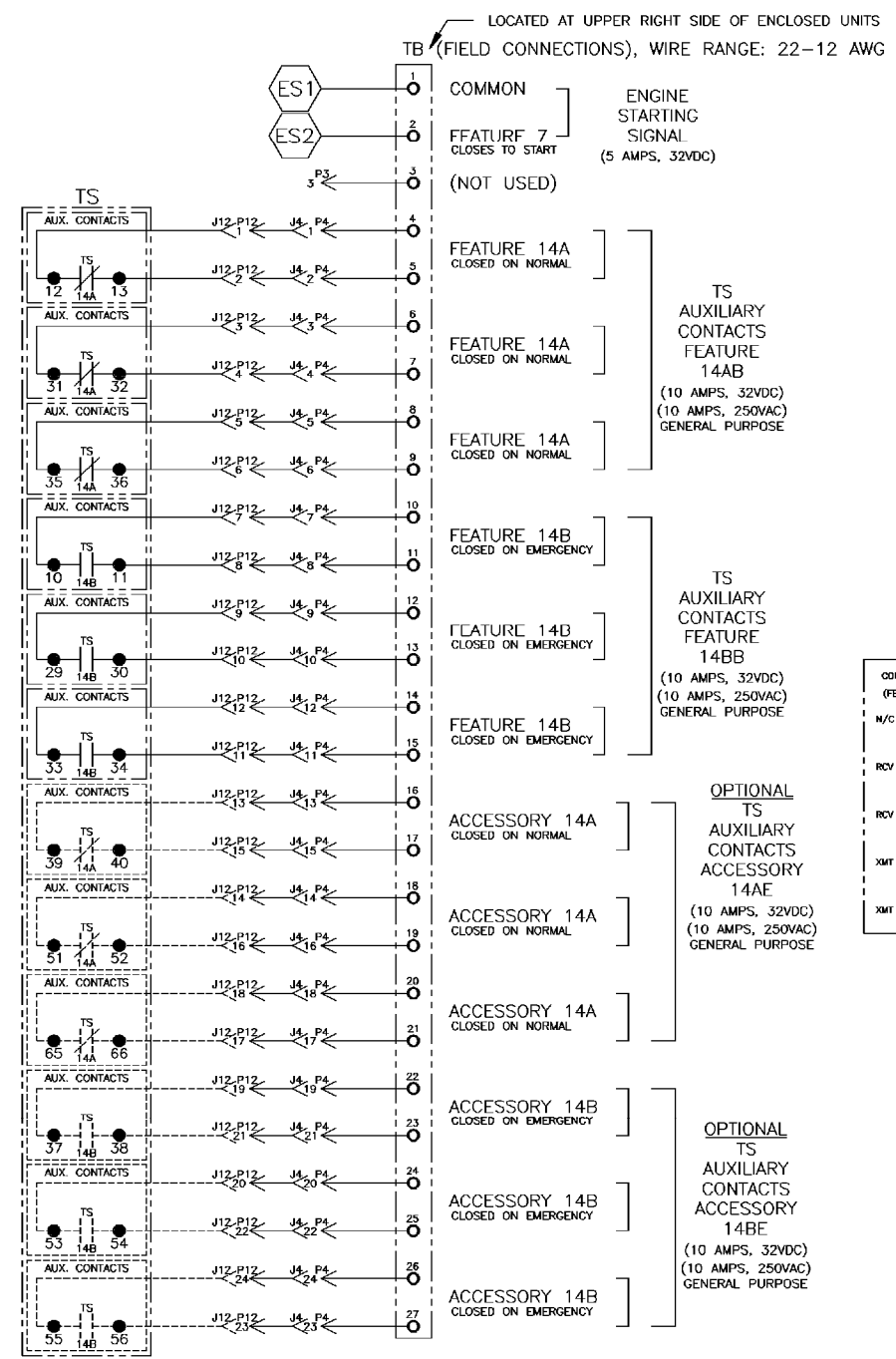
C

B

B

A

A

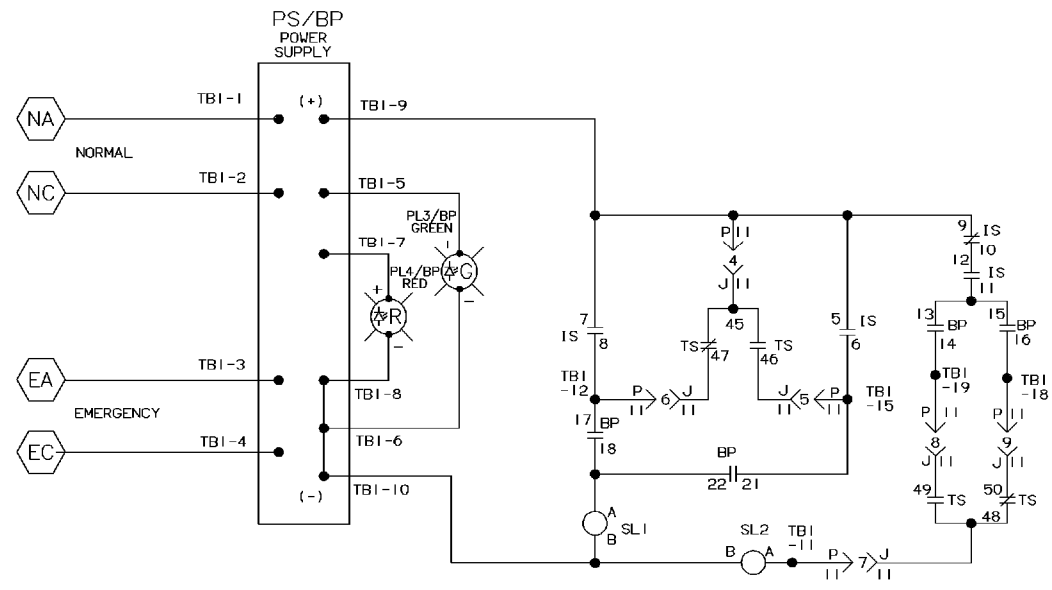


| | | | |
|---|--------|-----|---------|
| E | 157614 | BWM | 5/9/01 |
| D | 152086 | JPB | 6/22/99 |
| C | 150017 | KD | 12/98 |
| B | 149211 | KD | 10/98 |
| A | 148983 | KD | 8/98 |
| - | 148422 | JPB | 6/98 |
| - | ISSUE | | |

| | | | |
|--------------------------|--|-------------------------------|--|
| PROJECT NAME: | | WIRING DIAGRAM | |
| DRAWN BY: JPB | | DATE: 6/98 | |
| CHECKED BY: SDH | | DATE: 6/98 | |
| DRAWING APPROVAL: | | SCALE: 1:1 | |
| FINAL APPROVAL: | | ASCO POWER TECHNOLOGIES, L.P. | |
| CHANGE LETTER: | | E | |
| EQUIV. NO.: | | 157614 | |
| BY: | | APP: | |
| DATE: | | DATE: | |
| SUBSIDIARY DISTRIBUTION: | | COMPUTER GENERATED DRAWING | |
| ACAD | | FILE | |
| SIZE: | | DWG. NO.: | |
| DS617419 | | 617419 | |
| CHANGE LETTER: | | E | |
| EQUIV. NO.: | | 157614 | |
| SHEET 2 OF 8 | | | |

BYPASS / ISOLATION INTERLOCKING & INDICATION

ADDITIONAL CIRCUITS



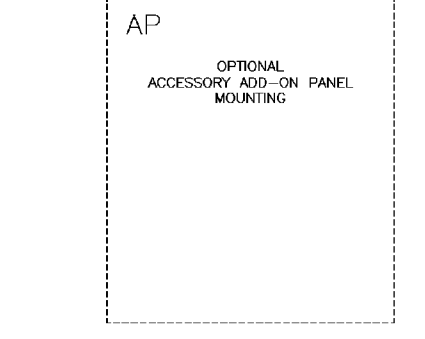
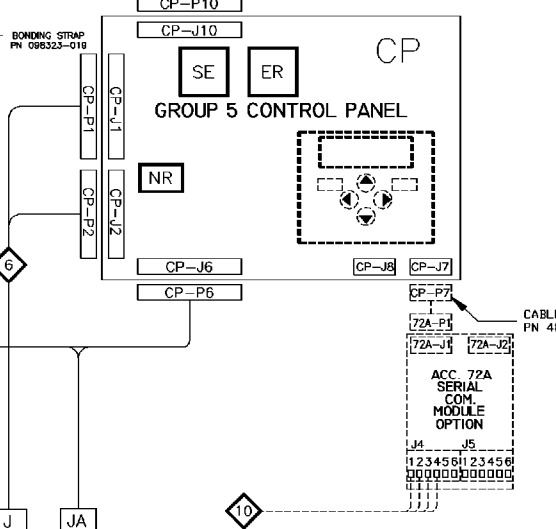
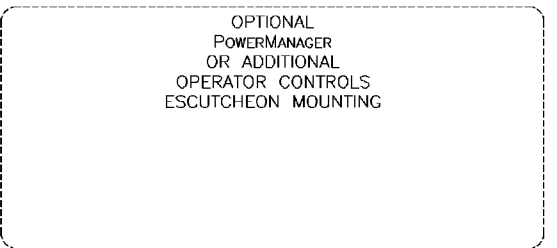
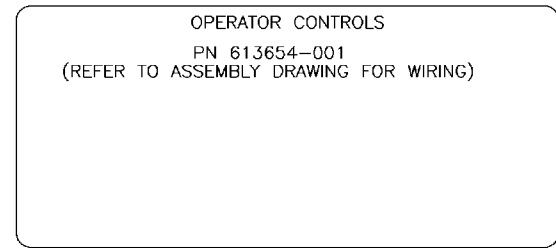
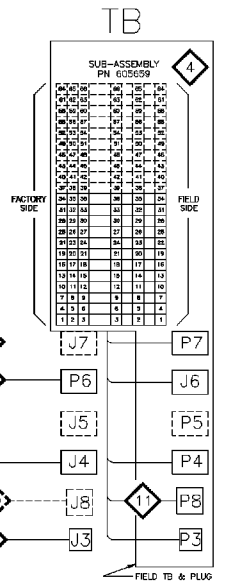
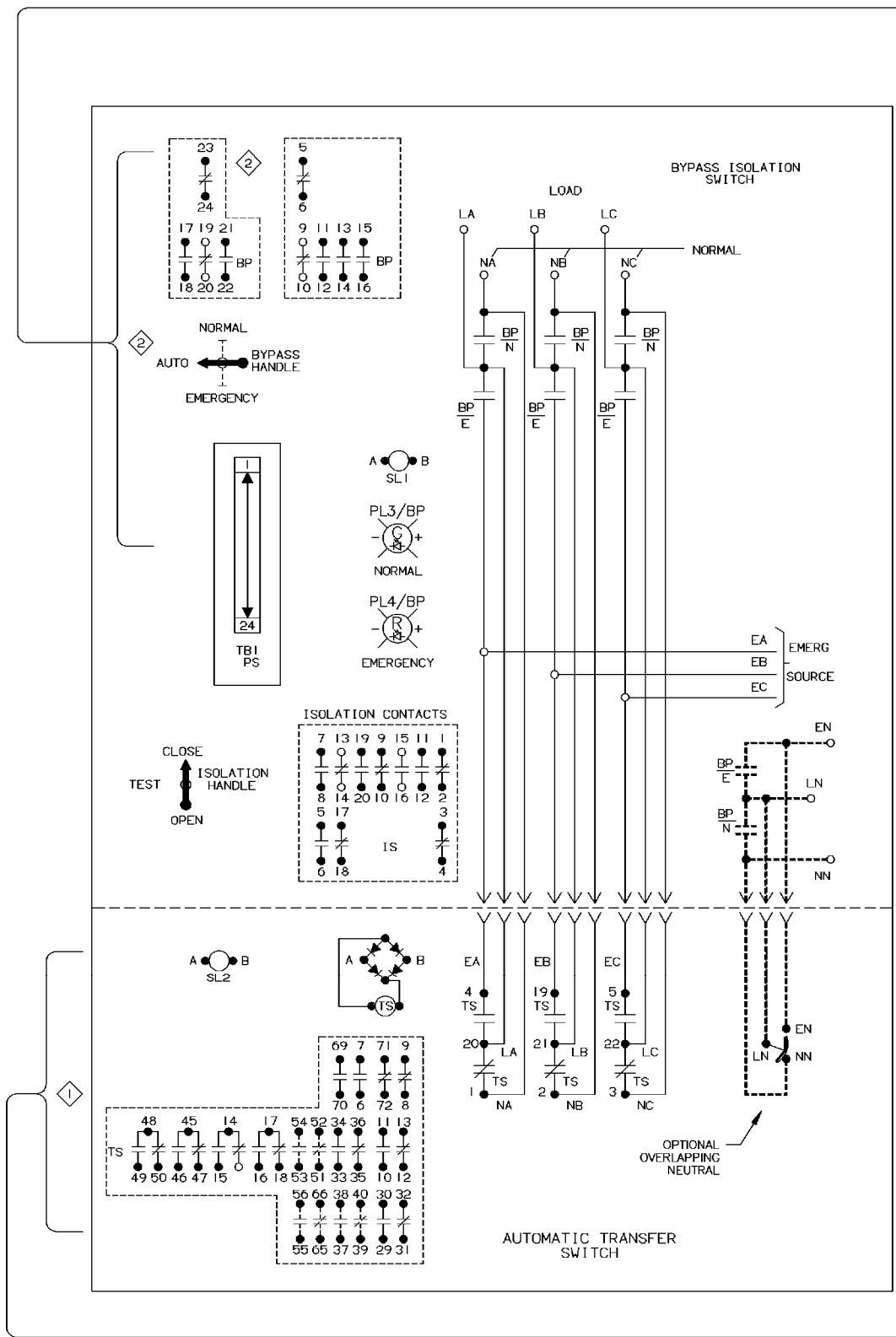
| | | | |
|---|---------|---------|---------|
| E | 157614 | BWM | 5/9/01 |
| | SEE ECN | | |
| D | 152086 | JPB | 6/22/99 |
| | SEE ECN | | |
| C | 150017 | KD | 12/98 |
| | SEE ECN | | |
| B | 149211 | KD BK | 10/98 |
| | SEE ECN | | |
| A | 148983 | KD | 8/98 |
| | SEE ECN | | |
| - | 148422 | JPB SDH | 6/98 |
| | ISSUE | | |

| | | | |
|---|--|--------------------|--|
| PROJECT NAME: | | WIRING DIAGRAM | |
| DRAWN BY: JPB | | DATE: 6/98 | |
| CHECKED: | | DRAWING APPROVAL: | |
| FINAL APPROVAL: SDH | | DATE: 6/98 | |
| MANUFACTURING: ITR FRAMES TO BE IN ACCORDANCE WITH ASCO PROCEDURE MP-1-003 FOR PLASTIC PARTS. SEE MP-1-005. | | ASSEMBLY REF. NO.: | |
| PROPERTY OF ASCO POWER TECHNOLOGIES. USE PERMITTED FOR OUR WORK ONLY. ALL RIGHTS OF DESIGN OR INVENTION ARE RESERVED. | | SCALE: ACAD FILE | |
| SIZE: DWS, NO. | | DS617419 | |
| CHANGE LETTER: E | | ECN NO.: 157614 | |
| ASCO POWER TECHNOLOGIES, L.P. FLORENNA PARK, NEW JERSEY 07932 U.S.A. | | SHEET 5 OF 8 | |

PHYSICAL DIAGRAM

ENCLOSURE

DOOR (INSIDE)



BP CONTROLS

| ID | DESCRIPTION |
|-----|----------------------------|
| PL3 | NORMAL SOURCE AVAILABLE |
| PL4 | EMERGENCY SOURCE AVAILABLE |
| | |
| | |

| | | | |
|---|--------|-----|---------|
| E | 157614 | BWM | 5/9/01 |
| D | 152086 | JPB | 6/22/99 |
| C | 150017 | KD | 12/98 |
| B | 149211 | KD | 10/98 |
| A | 148983 | KD | 8/98 |
| - | 148422 | JPB | 6/98 |

PROJECT NAME: WIRING DIAGRAM

7000 SERIES (7ATB) GROUP 5 CONTROLS

THIRD ANGLE PROJECTION

SCALE: ACAD FILE

DS617419

ASCO POWER TECHNOLOGIES, L.P.

WIRE RUN LISTING

Table 1: HARNESS LOCATOR 1. WIRE No., HARNESS 619510-020 (J9,J11,J12) TS, CLR, AWG. Includes wires 1-19, 115-125, 200-203, 300-314, 350-354, 313-316, 53-54, 216, 74-92, 300-304, 207-209, 127-137.

Table 2: HARNESS LOCATOR 2. WIRE No., HARNESS 619510-034 (J3,J10,P11,TB1,IS,BP,SL2,PL3,PL4) BYPASS, CLR, AWG. Includes wires 7-19, 315-319, 43-44, 41-42, 40, 7-8, 14, 14, 15, 15, 15, 16, 16, 17, 17, 17, 18, 18, 18, 19, 54-59, 46-49, 45-45, 29, 29, 44, 44, 350, 350, 313, 316, 312, 314, 53-54, 216, 74-92, 300-304, 207-209, 127-137.

Table 3: HARNESS LOCATOR 3. WIRE No., HARNESS 387924-001 (P,PA,P9,P10), CLR, AWG. Includes wires 1-19, 200-203, 74-92, 58, 250-267, 40-43, 261-267, 40-43, 250-267, 40-43, 261-267, 40-43.

Table 4: HARNESS LOCATOR 4. WIRE No., SUB-ASSEMBLY 605659 (P3,PA,J6,P7,TB) STD. FIELD TB, CLR, AWG. Includes wires 1-39, 146-149, 150-151, 152-155, 156-159, 160-163, 164-167, 168-171, 172-175, 176-179, 180-183, 184-187, 188-191, 192-195, 196-199, 200-203, 204-207, 208-211, 212-215, 216-219, 220-223, 224-227, 228-231, 232-235, 236-239, 240-243, 244-247, 248-251, 252-255, 256-259, 260-263, 264-267, 268-271, 272-275, 276-279, 280-283, 284-287, 288-291, 292-295, 296-299, 300-303, 304-307, 308-311, 312-315, 316-319, 320-323, 324-327, 328-331, 332-335, 336-339, 340-343, 344-347, 348-351, 352-355, 356-359, 360-363, 364-367, 368-371, 372-375, 376-379, 380-383, 384-387, 388-391, 392-395, 396-399, 400-403, 404-407, 408-411, 412-415, 416-419, 420-423, 424-427, 428-431, 432-435, 436-439, 440-443, 444-447, 448-451, 452-455, 456-459, 460-463, 464-467, 468-471, 472-475, 476-479, 480-483, 484-487, 488-491, 492-495, 496-499, 500-503, 504-507, 508-511, 512-515, 516-519, 520-523, 524-527, 528-531, 532-535, 536-539, 540-543, 544-547, 548-551, 552-555, 556-559, 560-563, 564-567, 568-571, 572-575, 576-579, 580-583, 584-587, 588-591, 592-595, 596-599, 600-603, 604-607, 608-611, 612-615, 616-619, 620-623, 624-627, 628-631, 632-635, 636-639, 640-643, 644-647, 648-651, 652-655, 656-659, 660-663, 664-667, 668-671, 672-675, 676-679, 680-683, 684-687, 688-691, 692-695, 696-699, 700-703, 704-707, 708-711, 712-715, 716-719, 720-723, 724-727, 728-731, 732-735, 736-739, 740-743, 744-747, 748-751, 752-755, 756-759, 760-763, 764-767, 768-771, 772-775, 776-779, 780-783, 784-787, 788-791, 792-795, 796-799, 800-803, 804-807, 808-811, 812-815, 816-819, 820-823, 824-827, 828-831, 832-835, 836-839, 840-843, 844-847, 848-851, 852-855, 856-859, 860-863, 864-867, 868-871, 872-875, 876-879, 880-883, 884-887, 888-891, 892-895, 896-899, 900-903, 904-907, 908-911, 912-915, 916-919, 920-923, 924-927, 928-931, 932-935, 936-939, 940-943, 944-947, 948-951, 952-955, 956-959, 960-963, 964-967, 968-971, 972-975, 976-979, 980-983, 984-987, 988-991, 992-995, 996-999, 1000-1003, 1004-1007, 1008-1011, 1012-1015, 1016-1019, 1020-1023, 1024-1027, 1028-1031, 1032-1035, 1036-1039, 1040-1043, 1044-1047, 1048-1051, 1052-1055, 1056-1059, 1060-1063, 1064-1067, 1068-1071, 1072-1075, 1076-1079, 1080-1083, 1084-1087, 1088-1091, 1092-1095, 1096-1099, 1100-1103, 1104-1107, 1108-1111, 1112-1115, 1116-1119, 1120-1123, 1124-1127, 1128-1131, 1132-1135, 1136-1139, 1140-1143, 1144-1147, 1148-1151, 1152-1155, 1156-1159, 1160-1163, 1164-1167, 1168-1171, 1172-1175, 1176-1179, 1180-1183, 1184-1187, 1188-1191, 1192-1195, 1196-1199, 1200-1203, 1204-1207, 1208-1211, 1212-1215, 1216-1219, 1220-1223, 1224-1227, 1228-1231, 1232-1235, 1236-1239, 1240-1243, 1244-1247, 1248-1251, 1252-1255, 1256-1259, 1260-1263, 1264-1267, 1268-1271, 1272-1275, 1276-1279, 1280-1283, 1284-1287, 1288-1291, 1292-1295, 1296-1299, 1300-1303, 1304-1307, 1308-1311, 1312-1315, 1316-1319, 1320-1323, 1324-1327, 1328-1331, 1332-1335, 1336-1339, 1340-1343, 1344-1347, 1348-1351, 1352-1355, 1356-1359, 1360-1363, 1364-1367, 1368-1371, 1372-1375, 1376-1379, 1380-1383, 1384-1387, 1388-1391, 1392-1395, 1396-1399, 1400-1403, 1404-1407, 1408-1411, 1412-1415, 1416-1419, 1420-1423, 1424-1427, 1428-1431, 1432-1435, 1436-1439, 1440-1443, 1444-1447, 1448-1451, 1452-1455, 1456-1459, 1460-1463, 1464-1467, 1468-1471, 1472-1475, 1476-1479, 1480-1483, 1484-1487, 1488-1491, 1492-1495, 1496-1499, 1500-1503, 1504-1507, 1508-1511, 1512-1515, 1516-1519, 1520-1523, 1524-1527, 1528-1531, 1532-1535, 1536-1539, 1540-1543, 1544-1547, 1548-1551, 1552-1555, 1556-1559, 1560-1563, 1564-1567, 1568-1571, 1572-1575, 1576-1579, 1580-1583, 1584-1587, 1588-1591, 1592-1595, 1596-1599, 1600-1603, 1604-1607, 1608-1611, 1612-1615, 1616-1619, 1620-1623, 1624-1627, 1628-1631, 1632-1635, 1636-1639, 1640-1643, 1644-1647, 1648-1651, 1652-1655, 1656-1659, 1660-1663, 1664-1667, 1668-1671, 1672-1675, 1676-1679, 1680-1683, 1684-1687, 1688-1691, 1692-1695, 1696-1699, 1700-1703, 1704-1707, 1708-1711, 1712-1715, 1716-1719, 1720-1723, 1724-1727, 1728-1731, 1732-1735, 1736-1739, 1740-1743, 1744-1747, 1748-1751, 1752-1755, 1756-1759, 1760-1763, 1764-1767, 1768-1771, 1772-1775, 1776-1779, 1780-1783, 1784-1787, 1788-1791, 1792-1795, 1796-1799, 1800-1803, 1804-1807, 1808-1811, 1812-1815, 1816-1819, 1820-1823, 1824-1827, 1828-1831, 1832-1835, 1836-1839, 1840-1843, 1844-1847, 1848-1851, 1852-1855, 1856-1859, 1860-1863, 1864-1867, 1868-1871, 1872-1875, 1876-1879, 1880-1883, 1884-1887, 1888-1891, 1892-1895, 1896-1899, 1900-1903, 1904-1907, 1908-1911, 1912-1915, 1916-1919, 1920-1923, 1924-1927, 1928-1931, 1932-1935, 1936-1939, 1940-1943, 1944-1947, 1948-1951, 1952-1955, 1956-1959, 1960-1963, 1964-1967, 1968-1971, 1972-1975, 1976-1979, 1980-1983, 1984-1987, 1988-1991, 1992-1995, 1996-1999, 2000-2003, 2004-2007, 2008-2011, 2012-2015, 2016-2019, 2020-2023, 2024-2027, 2028-2031, 2032-2035, 2036-2039, 2040-2043, 2044-2047, 2048-2051, 2052-2055, 2056-2059, 2060-2063, 2064-2067, 2068-2071, 2072-2075, 2076-2079, 2080-2083, 2084-2087, 2088-2091, 2092-2095, 2096-2099, 2100-2103, 2104-2107, 2108-2111, 2112-2115, 2116-2119, 2120-2123, 2124-2127, 2128-2131, 2132-2135, 2136-2139, 2140-2143, 2144-2147, 2148-2151, 2152-2155, 2156-2159, 2160-2163, 2164-2167, 2168-2171, 2172-2175, 2176-2179, 2180-2183, 2184-2187, 2188-2191, 2192-2195, 2196-2199, 2200-2203, 2204-2207, 2208-2211, 2212-2215, 2216-2219, 2220-2223, 2224-2227, 2228-2231, 2232-2235, 2236-2239, 2240-2243, 2244-2247, 2248-2251, 2252-2255, 2256-2259, 2260-2263, 2264-2267, 2268-2271, 2272-2275, 2276-2279, 2280-2283, 2284-2287, 2288-2291, 2292-2295, 2296-2299, 2300-2303, 2304-2307, 2308-2311, 2312-2315, 2316-2319, 2320-2323, 2324-2327, 2328-2331, 2332-2335, 2336-2339, 2340-2343, 2344-2347, 2348-2351, 2352-2355, 2356-2359, 2360-2363, 2364-2367, 2368-2371, 2372-2375, 2376-2379, 2380-2383, 2384-2387, 2388-2391, 2392-2395, 2396-2399, 2400-2403, 2404-2407, 2408-2411, 2412-2415, 2416-2419, 2420-2423, 2424-2427, 2428-2431, 2432-2435, 2436-2439, 2440-2443, 2444-2447, 2448-2451, 2452-2455, 2456-2459, 2460-2463, 2464-2467, 2468-2471, 2472-2475, 2476-2479, 2480-2483, 2484-2487, 2488-2491, 2492-2495, 2496-2499, 2500-2503, 2504-2507, 2508-2511, 2512-2515, 2516-2519, 2520-2523, 2524-2527, 2528-2531, 2532-2535, 2536-2539, 2540-2543, 2544-2547, 2548-2551, 2552-2555, 2556-2559, 2560-2563, 2564-2567, 2568-2571, 2572-2575, 2576-2579, 2580-2583, 2584-2587, 2588-2591, 2592-2595, 2596-2599, 2600-2603, 2604-2607, 2608-2611, 2612-2615, 2616-2619, 2620-2623, 2624-2627, 2628-2631, 2632-2635, 2636-2639, 2640-2643, 2644-2647, 2648-2651, 2652-2655, 2656-2659, 2660-2663, 2664-2667, 2668-2671, 2672-2675, 2676-2679, 2680-2683, 2684-2687, 2688-2691, 2692-2695, 2696-2699, 2700-2703, 2704-2707, 2708-2711, 2712-2715, 2716-2719, 2720-2723, 2724-2727, 2728-2731, 2732-2735, 2736-2739, 2740-2743, 2744-2747, 2748-2751, 2752-2755, 2756-2759, 2760-2763, 2764-2767, 2768-2771, 2772-2775, 2776-2779, 2780-2783, 2784-2787, 2788-2791, 2792-2795, 2796-2799, 2800-2803, 2804-2807, 2808-2811, 2812-2815, 2816-2819, 2820-2823, 2824-2827, 2828-2831, 2832-2835, 2836-2839, 2840-2843, 2844-2847, 2848-2851, 2852-2855, 2856-2859, 2860-2863, 2864-2867, 2868-2871, 2872-2875, 2876-2879, 2880-2883, 2884-2887, 2888-2891, 2892-2895, 2896-2899, 2900-2903, 2904-2907, 2908-2911, 2912-2915, 2916-2919, 2920-2923, 2924-2927, 2928-2931, 2932-2935, 2936-2939, 2940-2943, 2944-2947, 2948-2951, 2952-2955, 2956-2959, 2960-2963, 2964-2967, 2968-2971, 2972-2975, 2976-2979, 2980-2983, 2984-2987, 2988-2991, 2992-2995, 2996-2999, 3000-3003, 3004-3007, 3008-3011, 3012-3015, 3016-3019, 3020-3023, 3024-3027, 3028-3031, 3032-3035, 3036-3039, 3040-3043, 3044-3047, 3048-3051, 3052-3055, 3056-3059, 3060-3063, 3064-3067, 3068-3071, 3072-3075, 3076-3079, 3080-3083, 3084-3087, 3088-3091, 3092-3095, 3096-3099, 3100-3103, 3104-3107, 3108-3111, 3112-3115, 3116-3119, 3120-3123, 3124-3127, 3128-3131, 3132-3135, 3136-3139, 3140-3143, 3144-3147, 3148-3151, 3152-3155, 3156-3159, 3160-3163, 3164-3167, 3168-3171, 3172-3175, 3176-3179, 3180-3183, 3184-3187, 3188-3191, 3192-3195, 3196-3199, 3200-3203, 3204-3207, 3208-3211, 3212-3215, 3216-3219, 3220-3223, 3224-3227, 3228-3231, 3232-3235, 3236-3239, 3240-3243, 3244-3247, 3248-3251, 3252-3255, 3256-3259, 3260-3263, 3264-3267, 3268-3271, 3272-3275, 3276-3279, 3280-3283, 3284-3287, 3288-3291, 3292-3295, 3296-3299, 3300-3303, 3304-3307, 3308-3311, 3312-3315, 3316-3319, 3320-3323, 3324-3327, 3328-3331, 3332-3335, 3336-3339, 3340-3343, 3344-3347, 3348-3351, 3352-3355, 3356-3359, 3360-3363, 3364-3367, 3368-3371, 3372-3375, 3376-3379, 3380-3383, 3384-3387, 3388-3391, 3392-3395, 3396-3399, 3400-3403, 3404-3407, 3408-3411, 3412-3415, 3416-3419, 3420-3423, 3424-3427, 3428-3431, 3432-3435, 3436-3439, 3440-3443, 3444-3447, 3448-3451, 3452-3455, 3456-3459, 3460-3463, 3464-3467, 3468-3471, 3472-3475, 3476-3479, 3480-3483, 3484-3487, 3488-3491, 3492-3495, 3496-3499, 3500-3503, 3504-3507, 3508-3511, 3512-3515, 3516-3519, 3520-3523, 3524-3527, 3528-3531, 3532-3535, 3536-3539, 3540-3543, 3544-3547, 3548-3551, 3552-3555, 3556-3559, 3560-3563, 3564-3567, 3568-3571, 3572-3575, 3576-3579, 3580-3583, 3584-3587, 3588-3591, 3592-3595, 3596-3599, 3600-3603, 3604-3607, 3608-3611, 3612-3615, 3616-3619, 3620-3623, 3624-3627, 3628-3631, 3632-3635, 3636-3639, 3640-3643, 3644-3647, 3648-3651, 3652-3655, 3656-3659, 3660-3663, 3664-3667, 3668-3671, 3672-3675, 3676-3679, 3680-3683, 3684-3687, 3688-3691, 3692-3695, 3696-3699, 3700-3703, 3704-3707, 3708-3711, 3712-3715, 3716-3719, 3720-3723, 3724-3727, 3728-3731, 3732-3735, 3736-3739, 3740-3743, 3744-3747, 3748-3751, 3752-3755, 3756-3759, 3760-3763, 3764-3767, 3768-3771, 3772-3775, 3776-3779, 3780-3783, 3784-3787, 3788-3791, 3792-3795, 3796-3799, 3800-3803, 3804-3807, 3808-3811, 3812-3815, 3816-3819, 3820-3823, 3824-3827, 3828-3831, 3832-3835, 3836-3839, 3840-3843, 3844-3847, 3848-3851, 3852-3855, 3856-3859, 3860-3863, 3864-3867, 3868-3871, 3872-3875, 3876-3879, 3880-3883, 3884-3887, 3888-3891, 3892-3895, 3896-3899, 3900-3903, 3904-3907, 3908-3911, 3912-3915, 3916-3919, 3920-3923, 3924-3927, 3928-3931, 3932-3935, 3936-3939, 3940-3943, 3944-3947, 3948-3951, 3952-3955, 3956-3959, 3960-3963, 3964-3967, 3968-3971, 3972-3975, 3976-3979, 3980-3983, 3984-3987, 3988-3991, 3992-3995, 3996-3999, 4000-4003, 4004-4007, 4008-4011, 4012-4015, 4016-4019, 4020-4023, 4024-4027, 4028-4031, 4032-4035, 4036-4039, 4040-4043, 4044-4047, 4048-4051, 4052-4055, 4056-4059, 4060-4063, 4064-4067, 4068-4071, 4072-4075, 4076-4079, 4080-4083, 4084-4087, 4088-4091, 4092-4095, 4096-4099, 4100-4103, 4104-4107, 4108-4111, 4112-4115, 4116-4119, 4120-4123, 4124-4127, 4128-4131, 4132-4135, 4136-4139, 4140-4143, 4144-4147, 4148-4151, 4152-4155, 4156-4159, 4160-4163, 4164-4167, 4168-4171, 4172-4175, 4176-4179, 4180-4183, 4184-4187, 4188-4191, 4192-4195, 4196-4199, 4200-4203, 4204-4207, 4208-4211, 4212-4215, 4216-4219, 4220-4223, 4224-4227, 4228-4231, 4232-4235, 4236-4239, 4240-4243, 4244-4247, 4248-4251, 4252-4255, 4256-4259, 4260-4263, 4264-4267, 4268-4271, 4272-4275, 4276-4279, 4280-4283, 4284-4287, 4288-4291, 4292-4295, 4296-4299, 4300-4303, 4304-4307, 4308-4311, 4312-4315, 4316-4319, 4320-4323, 4324-4327, 4328-4331, 4332-4335, 4336-4339, 4340-4343, 4344-4347, 4348-4351, 4352-4355, 4356-4359, 4360-4363, 4364-4367, 4368-4371, 4372-4375, 4376-4379, 4380-4383, 4384-4387, 4388-4391, 4392-4395, 4396-4399, 4400-4403, 4404-4407, 4408-4411, 4412-4415, 4416-4419, 4420-4423, 4424-4427, 4428-4431, 4432-4435, 4436-4439, 4440-4443, 4444-4447, 4448-4451, 4452-4455, 4456-4459, 4460-4463, 4464-4467, 4468-4471, 4472-4475, 4476-4479, 4480-4483, 4484-4487, 4488-4491, 4492-4495, 4496-4499, 4500-4503, 4504-4507, 4508-4511, 4512-4515, 4516-4519, 4520-

