



# FIELD CONNECTIONS

D

D

C

C

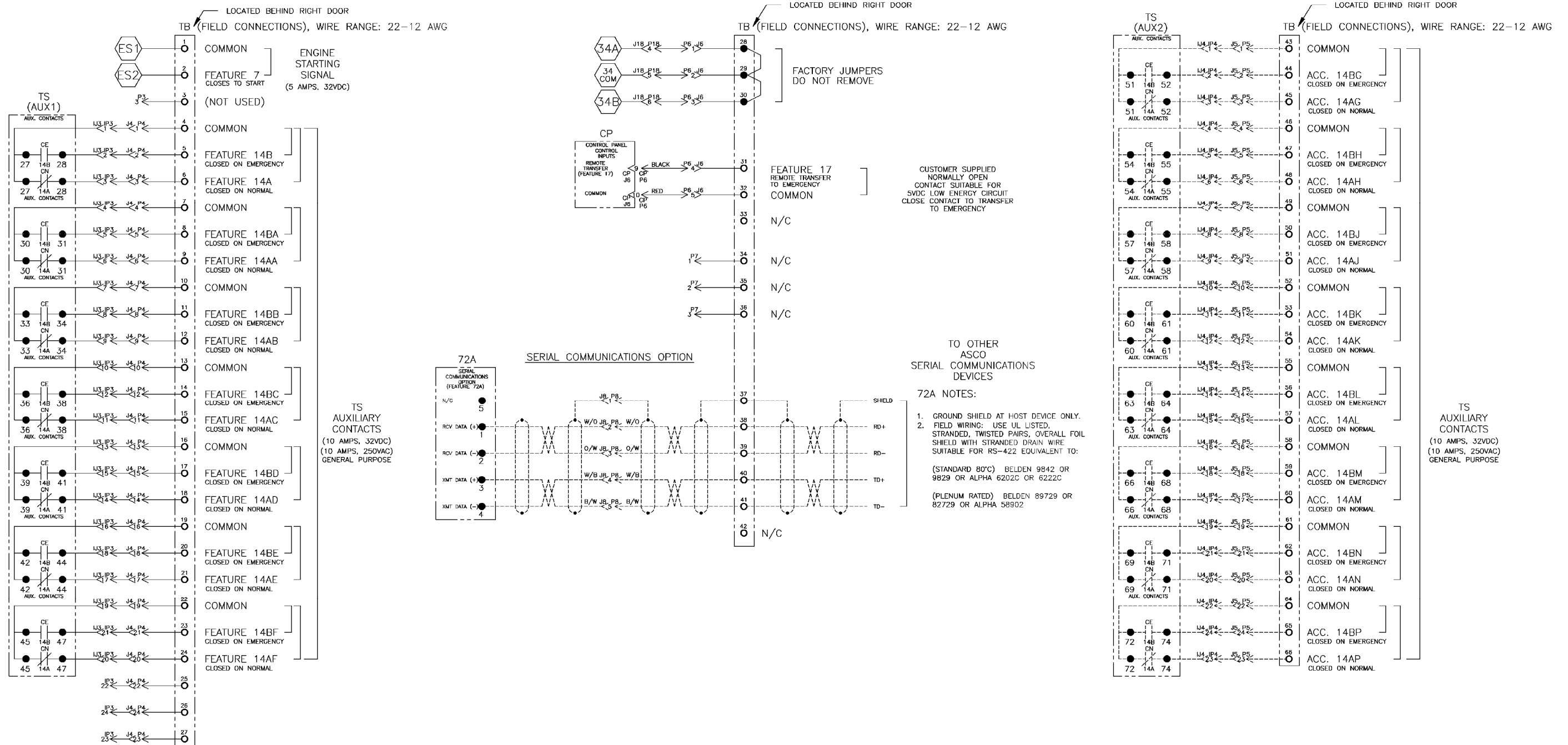
B

B

A

A

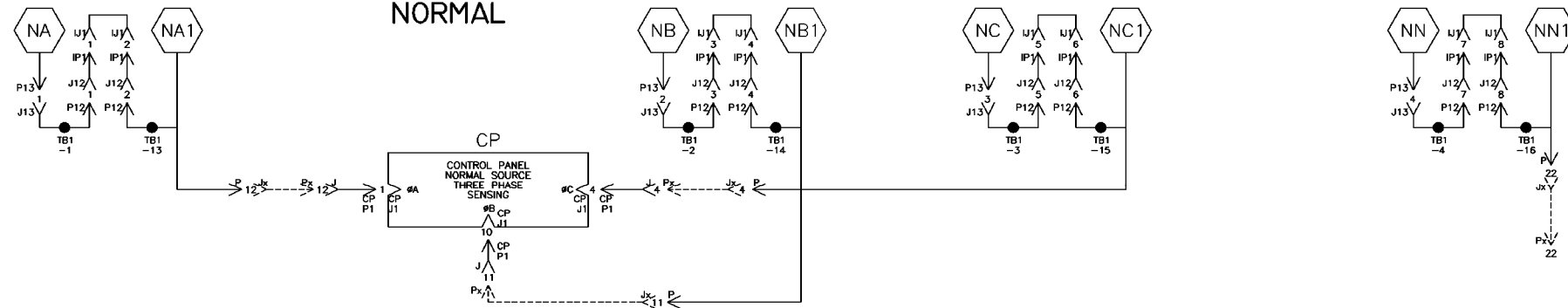
## OPTIONAL ACCESSORY (ACC.) AUXILIARY CONTACTS



PROJECT NAME:		157978 WK BK 6/16/01	
WIRING DIAGRAM		SEE ECN	
7000 SERIES (7ADTB)		SUBSIDIARY DISTRIBUTION	
GROUP 5 CONTROLS		THIRD ANGLE PROJECTION	
BY: YZ	DATE: 11/97	MANUFACTURING TOLERANCES TO BE IN ACCORDANCE WITH ASCO PROCEDURE MP-1-003. FOR PLASTIC PARTS SEE MP-1-055.	ASSEM. REF. NO.
CHECKED:	DRAFTING APPROVAL:	PROPERTY OF ASCO POWER TECHNOLOGIES. USE PERMITTED FOR OUR WORK ONLY. ALL RIGHTS OF DESIGN OR INVENTION ARE RESERVED.	SCALE: DWG. NO. DS1617429
FINAL APPROVAL: SDH	DATE: 11/97	ASCO POWER TECHNOLOGIES, L.P. FLOHAM PARK, NEW JERSEY 07932 U.S.A.	CHANGE LETTER: F
		COMPUTER GENERATED DRAWING	
		SCALE: DWG. NO. DS1617429	
		CHANGE LETTER: F	
		ECON. NO. 157978	
		SHEET 2 OF 8	

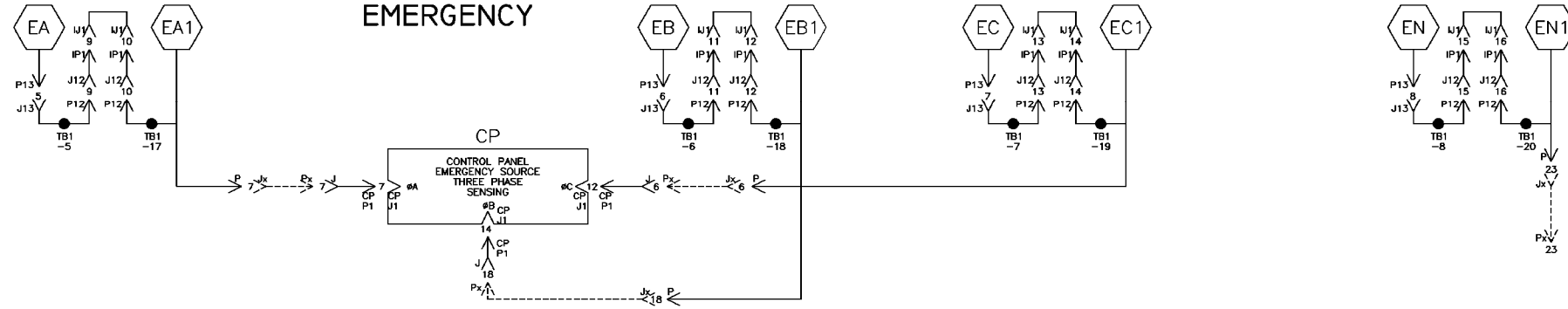
NORMAL SOURCE CIRCUITS

NORMAL



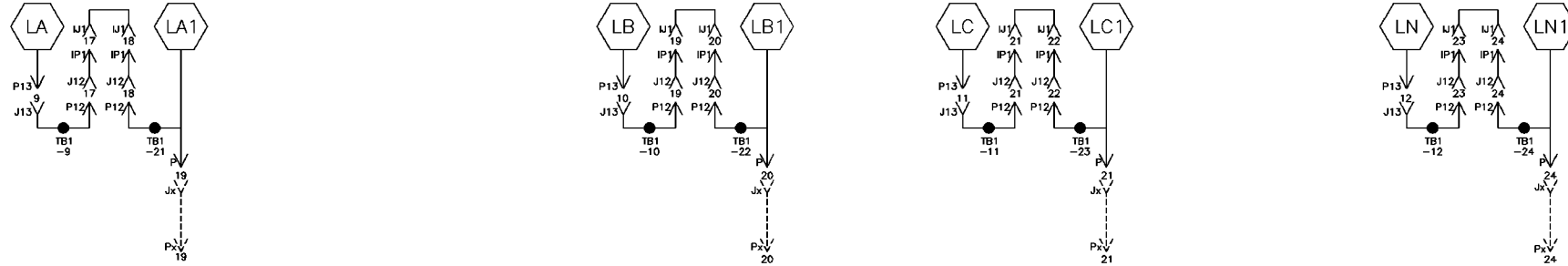
EMERGENCY SOURCE CIRCUITS

EMERGENCY

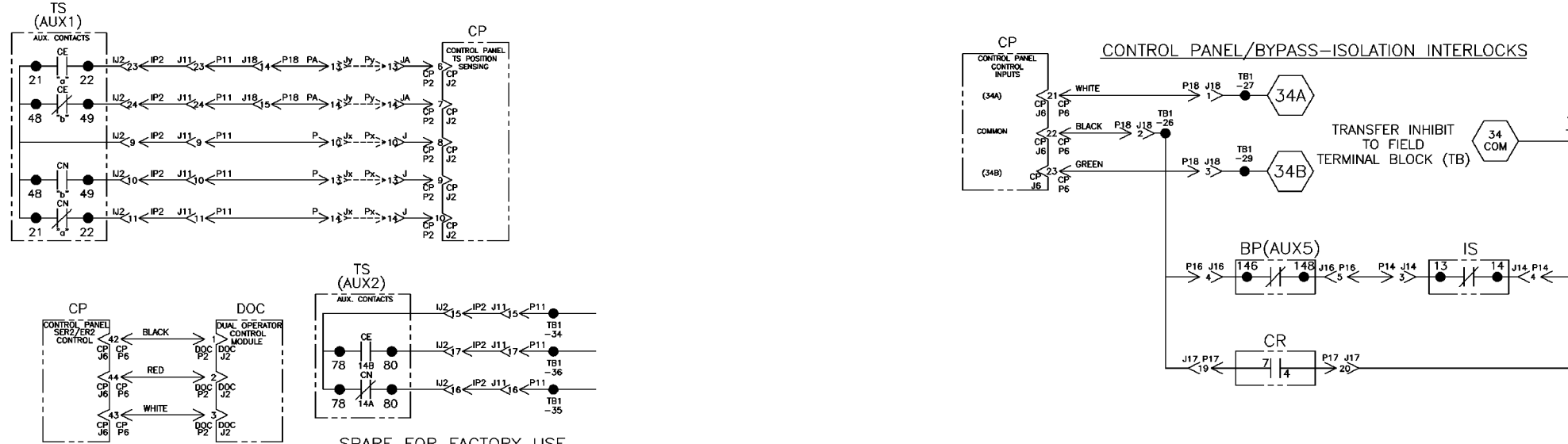


LOAD TERMINAL CIRCUITS

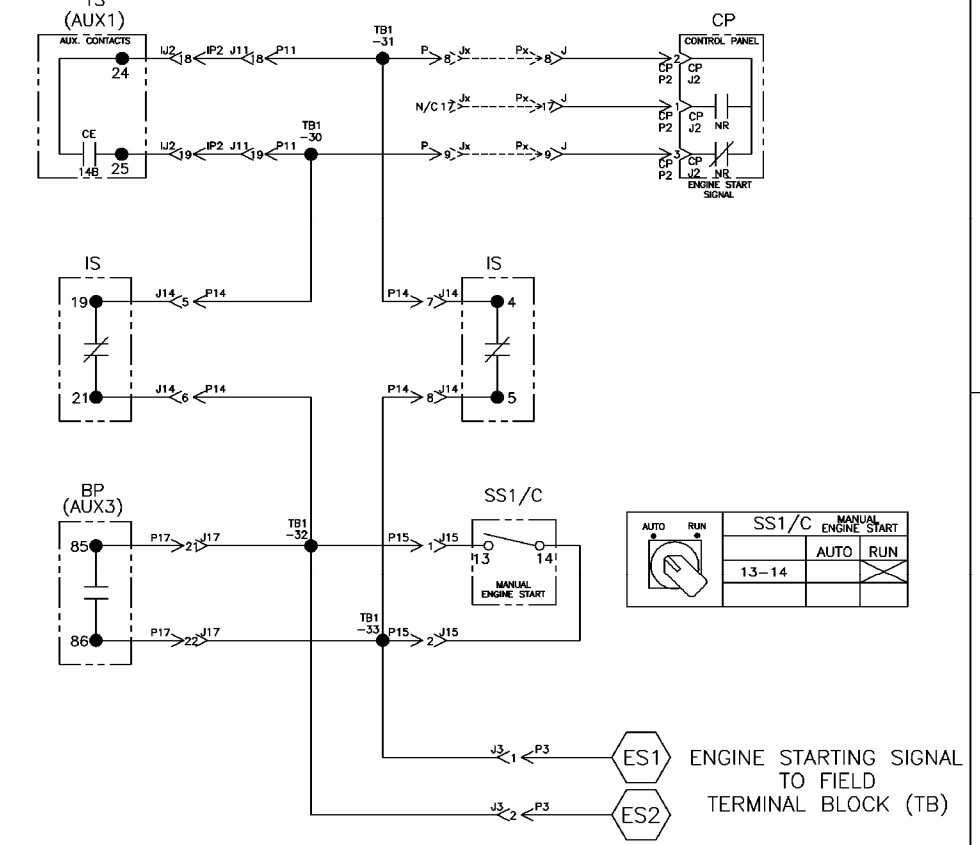
LOAD



CONTROL SIGNALS & INDICATION



ENGINE START CIRCUIT



AUTO	RUN	SS1/C	MANUAL ENGINE START
		13-14	AUTO RUN

PROJECT NAME: WIRING DIAGRAM  
 7000 SERIES (7ADTB) GROUP 5 CONTROLS

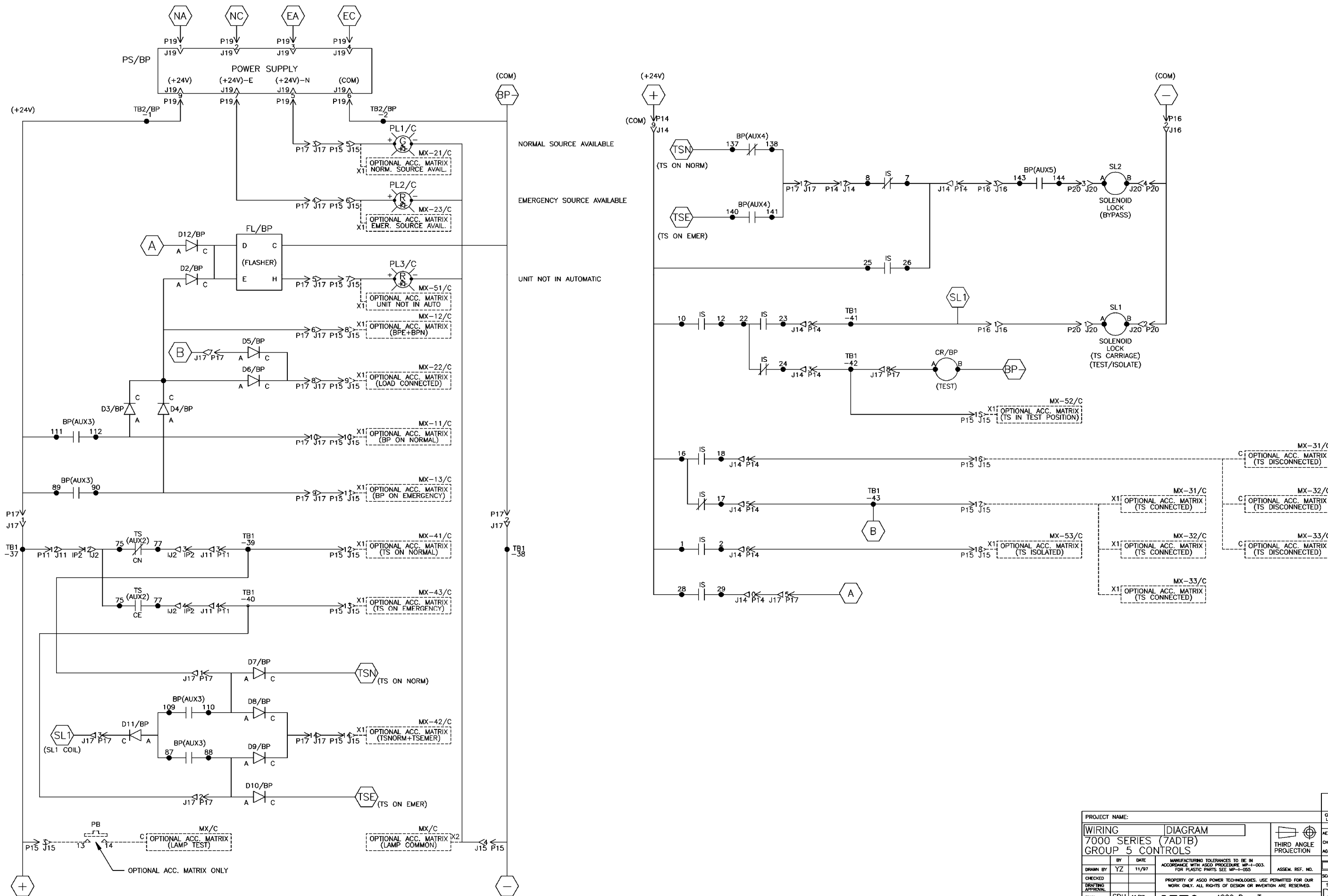
BY	DATE	MANUFACTURING TOLERANCES TO BE IN ACCORDANCE WITH ASQC PROCEDURE MP-1-003. FOR PLASTIC PARTS SEE MP-1-055.
DRAWN BY	YZ	11/97
CHECKED		
DRAFTING APPROVAL		
FINAL APPROVAL	SDH	11/97

ASCO POWER TECHNOLOGIES, L.P.  
 FLORHAM PARK, NEW JERSEY 07932 U.S.A.

CHANGE LETTER	ECN NO.	BY	APP.	DATE
F	157978	WK	BK	6/16/01

DS617429  
 SHEET 4 OF 8

BYPASS / ISOLATION INTERLOCKING & INDICATION



PROJECT NAME:		F 157978 WK BK 6/16/01	
WIRING DIAGRAM		SEE ECN	
7000 SERIES (7ADTB)		SUBSIDIARY DISTRIBUTION	
GROUP 5 CONTROLS		THIRD ANGLE PROJECTION	
DRAWN BY: YZ 11/97		MANUFACTURING TOLERANCES TO BE IN ACCORDANCE WITH ASQC PROCEDURE MP-1-003. FOR PLASTIC PARTS SEE MP-1-005.	
CHECKED BY: SDH 11/97		PROPERTY OF ASCO POWER TECHNOLOGIES. USE PERMITTED FOR OUR WORK ONLY. ALL RIGHTS OF DESIGN OR INVENTION ARE RESERVED.	
DRAWING APPROVAL: SDH 11/97		ASCO POWER TECHNOLOGIES, L.P. FLORHAM PARK, NEW JERSEY 07932 U.S.A.	
FINAL APPROVAL:		COMPUTER GENERATED DRAWING	
SCALE: ACAD FILE		SIZE: Dwg. No. DS617429	
CHANGE LETTER: F		Ecn No. 157978 SHEET 5 OF 8	



WIRE RUN LISTING

HARNESS LOCATOR 605674-001 (U1) TS. Table with columns: WIRE No., CLR, AWG. Lists wires 1-12.

HARNESS LOCATOR 619510-025 (P1,P2N,P2E,J10) TS CONTROL. Table with columns: WIRE No., CLR, AWG. Lists wires 310-322.

HARNESS LOCATOR 605674-006 (IP1,J12) STATIONARY FRAME. Table with columns: WIRE No., CLR, AWG. Lists wires 1-12.

HARNESS LOCATOR 605674-006 (IP4,J5) STATIONARY FRAME(OPT). Table with columns: WIRE No., CLR, AWG. Lists wires 80-103.

HARNESS LOCATOR 605674-011 (J14,J5) ISOLATION AUX. CONTACTS. Table with columns: WIRE No., CLR, AWG. Lists wires 140-170.

HARNESS LOCATOR 605674-014 (J16,SL1,SL2,BP(AUX5)) BP/IS INTERLOCKS. Table with columns: WIRE No., CLR, AWG. Lists wires 154-192.

HARNESS LOCATOR 605674-016 (P6,P18) INTERNAL CONTROL & FIELD INPUTS. Table with columns: WIRE No., CLR, AWG. Lists wires 210-244.

HARNESS LOCATOR 619510-024 (U2,P10) TS. Table with columns: WIRE No., CLR, AWG. Lists wires 1-43.

HARNESS LOCATOR 619510-025 (P1,P2N,P2E,J10) TS CONTROL. Table with columns: WIRE No., CLR, AWG. Lists wires 310-322.

HARNESS LOCATOR 605674-006 (IP1,J12) STATIONARY FRAME. Table with columns: WIRE No., CLR, AWG. Lists wires 1-12.

HARNESS LOCATOR 605674-007 (J3,TB1) ENGINE START. Table with columns: WIRE No., CLR, AWG. Lists wires 120-123.

HARNESS LOCATOR 605674-011 (J14,J5) ISOLATION AUX. CONTACTS. Table with columns: WIRE No., CLR, AWG. Lists wires 140-170.

HARNESS LOCATOR 605674-014 (J16,SL1,SL2,BP(AUX5)) BP/IS INTERLOCKS. Table with columns: WIRE No., CLR, AWG. Lists wires 154-192.

HARNESS LOCATOR 605674-016 (P6,P18) INTERNAL CONTROL & FIELD INPUTS. Table with columns: WIRE No., CLR, AWG. Lists wires 210-244.

HARNESS LOCATOR 619510-024 (U2,P10) TS. Table with columns: WIRE No., CLR, AWG. Lists wires 1-43.

HARNESS LOCATOR 619510-025 (P1,P2N,P2E,J10) TS CONTROL. Table with columns: WIRE No., CLR, AWG. Lists wires 310-322.

HARNESS LOCATOR 605674-006 (IP1,J12) STATIONARY FRAME. Table with columns: WIRE No., CLR, AWG. Lists wires 1-12.

HARNESS LOCATOR 605674-007 (J3,TB1) ENGINE START. Table with columns: WIRE No., CLR, AWG. Lists wires 120-123.

HARNESS LOCATOR 605674-011 (J14,J5) ISOLATION AUX. CONTACTS. Table with columns: WIRE No., CLR, AWG. Lists wires 140-170.

HARNESS LOCATOR 605674-014 (J16,SL1,SL2,BP(AUX5)) BP/IS INTERLOCKS. Table with columns: WIRE No., CLR, AWG. Lists wires 154-192.

HARNESS LOCATOR 605674-016 (P6,P18) INTERNAL CONTROL & FIELD INPUTS. Table with columns: WIRE No., CLR, AWG. Lists wires 210-244.

HARNESS LOCATOR 605674-003-A (U3) TS STD. AUX. CONTACTS. Table with columns: WIRE No., CLR, AWG. Lists wires 50-73.

HARNESS LOCATOR 605674-004-A (U4) TS OPT. AUX. CONTACTS. Table with columns: WIRE No., CLR, AWG. Lists wires 80-103.

HARNESS LOCATOR 605674-006 (IP2,J11) STATIONARY FRAME. Table with columns: WIRE No., CLR, AWG. Lists wires 1-43.

HARNESS LOCATOR 605674-010 (P13,BP) BP HIGH VOLTAGE. Table with columns: WIRE No., CLR, AWG. Lists wires 7-141.

HARNESS LOCATOR 605674-011 (J14,J5) ISOLATION AUX. CONTACTS. Table with columns: WIRE No., CLR, AWG. Lists wires 140-170.

HARNESS LOCATOR 605674-015 (P17,BP) BP LOW VOLTAGE. Table with columns: WIRE No., CLR, AWG. Lists wires 121-170.

HARNESS LOCATOR 605674-016 (P6,P18) INTERNAL CONTROL & FIELD INPUTS. Table with columns: WIRE No., CLR, AWG. Lists wires 210-244.

HARNESS LOCATOR 605674-003-A (U3) TS STD. AUX. CONTACTS. Table with columns: WIRE No., CLR, AWG. Lists wires 50-73.

HARNESS LOCATOR 605674-004-A (U4) TS OPT. AUX. CONTACTS. Table with columns: WIRE No., CLR, AWG. Lists wires 80-103.

HARNESS LOCATOR 605674-006 (IP2,J11) STATIONARY FRAME. Table with columns: WIRE No., CLR, AWG. Lists wires 1-43.

HARNESS LOCATOR 605674-010 (P13,BP) BP HIGH VOLTAGE. Table with columns: WIRE No., CLR, AWG. Lists wires 7-141.

HARNESS LOCATOR 605674-011 (J14,J5) ISOLATION AUX. CONTACTS. Table with columns: WIRE No., CLR, AWG. Lists wires 140-170.

HARNESS LOCATOR 605674-015 (P17,BP) BP LOW VOLTAGE. Table with columns: WIRE No., CLR, AWG. Lists wires 121-170.

HARNESS LOCATOR 605674-016 (P6,P18) INTERNAL CONTROL & FIELD INPUTS. Table with columns: WIRE No., CLR, AWG. Lists wires 210-244.

HARNESS LOCATOR 605674-003-A (U3) TS STD. AUX. CONTACTS. Table with columns: WIRE No., CLR, AWG. Lists wires 50-73.

HARNESS LOCATOR 605674-004-A (U4) TS OPT. AUX. CONTACTS. Table with columns: WIRE No., CLR, AWG. Lists wires 80-103.

HARNESS LOCATOR 605674-006 (IP3,J4) STATIONARY FRAME. Table with columns: WIRE No., CLR, AWG. Lists wires 50-73.

HARNESS LOCATOR 605674-010 (P13,BP) BP HIGH VOLTAGE. Table with columns: WIRE No., CLR, AWG. Lists wires 7-141.

HARNESS LOCATOR 605674-011 (J14,J5) ISOLATION AUX. CONTACTS. Table with columns: WIRE No., CLR, AWG. Lists wires 140-170.

HARNESS LOCATOR 605674-015 (P17,BP) BP LOW VOLTAGE. Table with columns: WIRE No., CLR, AWG. Lists wires 121-170.

HARNESS LOCATOR 605674-016 (P6,P18) INTERNAL CONTROL & FIELD INPUTS. Table with columns: WIRE No., CLR, AWG. Lists wires 210-244.

HARNESS LOCATOR 609051-001-A TS STD. AUX. CONTACTS. Table with columns: WIRE No., CLR, AWG. Lists wires 50-71.

HARNESS LOCATOR 609051-002-A TS OPT. AUX. CONTACTS. Table with columns: WIRE No., CLR, AWG. Lists wires 80-101.

HARNESS LOCATOR 605674-006 (IP3,J4) STATIONARY FRAME. Table with columns: WIRE No., CLR, AWG. Lists wires 50-73.

HARNESS LOCATOR 605674-010 (P13,BP) BP HIGH VOLTAGE. Table with columns: WIRE No., CLR, AWG. Lists wires 7-141.

HARNESS LOCATOR 605674-011 (J14,J5) ISOLATION AUX. CONTACTS. Table with columns: WIRE No., CLR, AWG. Lists wires 140-170.

HARNESS LOCATOR 605674-015 (P17,BP) BP LOW VOLTAGE. Table with columns: WIRE No., CLR, AWG. Lists wires 121-170.

HARNESS LOCATOR 605674-016 (P6,P18) INTERNAL CONTROL & FIELD INPUTS. Table with columns: WIRE No., CLR, AWG. Lists wires 210-244.

PROJECT NAME: WIRING DIAGRAM 7000 SERIES (7ADTB) GROUP 5 CONTROLS. Includes drawing information, scale, and drawing number DS617429.

WIRE RUN LISTING

Table 20: HARNESS LOCATOR. WIRE No. 350, HARNESS 605674-017, CONTROL PANEL EXTENSION. Lists wire numbers and AWG (16).

Table 21: HARNESS LOCATOR. WIRE No. 1, SUB-ASSEMBLY 605749, MAIN INTERCONNECT ASSEMBLY. Lists wire numbers and AWG (16).

Table 22: HARNESS LOCATOR. WIRE No. 190, SUB-ASSEMBLY 605749, MAIN INTERCONNECT ASSEMBLY (CONTINUED). Lists wire numbers and AWG (16).

Table 23: HARNESS LOCATOR. WIRE No. 210, SUB-ASSEMBLY 605749, MAIN INTERCONNECT ASSEMBLY. Lists wire numbers and AWG (16).

Table 24: HARNESS LOCATOR. WIRE No. 120, SUB-ASSEMBLY 605659, STD. FIELD TB. Lists wire numbers and AWG (16).

Table 25: HARNESS LOCATOR. WIRE No. 123, ADD WIRES. Lists wire numbers and AWG (16).

Table 26: HARNESS LOCATOR. WIRE No. 270, HARNESS (J7) OPTIONAL FIELD OUTPUTS. Lists wire numbers and AWG (16).

Table 27: HARNESS LOCATOR. WIRE No. 300, HARNESS 605454-005, (J8) OPTIONAL SERIAL I/O. Lists wire numbers and AWG (16).

Table 28: HARNESS LOCATOR. WIRE No. 217, HARNESS 619385, (JAC,CP-P2,DOC-P1) DOC. Lists wire numbers and AWG (16).

Table 29: HARNESS LOCATOR. WIRE No. 350, HARNESS 483763, (J,CP-P1,CP-P2) CONTROL PANEL. Lists wire numbers and AWG (16).

Table 30: HARNESS LOCATOR. WIRE No. 342, HARNESS 309320-005, OPTIONAL 8 IN. EXTENSION HARNESS. Lists wire numbers and AWG (16).

Table 31: HARNESS LOCATOR. WIRE No. J11, SUB-ASSEMBLY 605113-001, (J1,CM) DUAL SOLENOID UNIT CONTROL MODULE ASSEMBLY. Lists wire numbers and AWG (16).

Table 32: WIRE No., ADDITIONAL WIRING, CLR, AWG. Empty table for additional wiring details.

Table 33: WIRE No., ADDITIONAL WIRING, CLR, AWG. Empty table for additional wiring details.

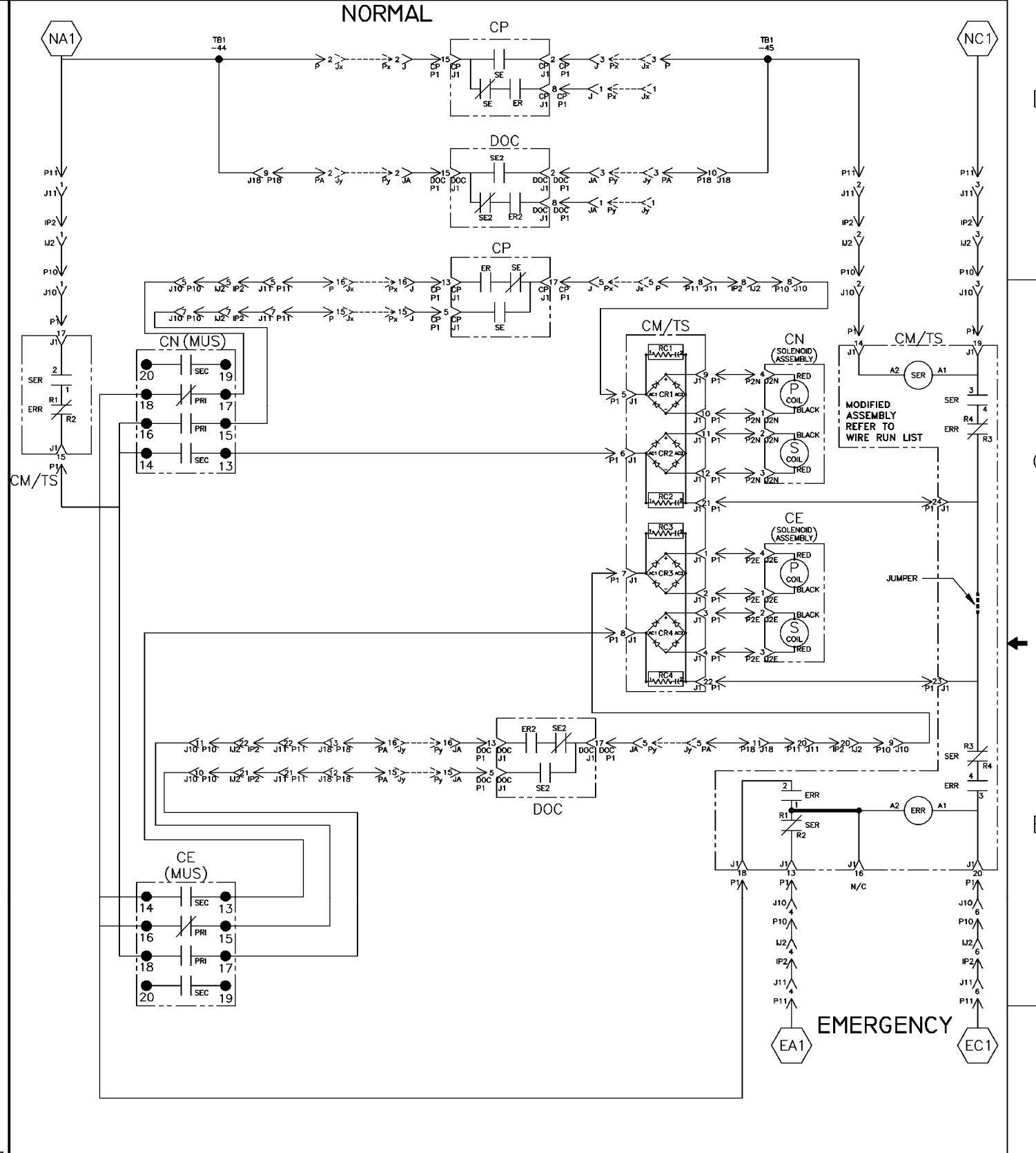
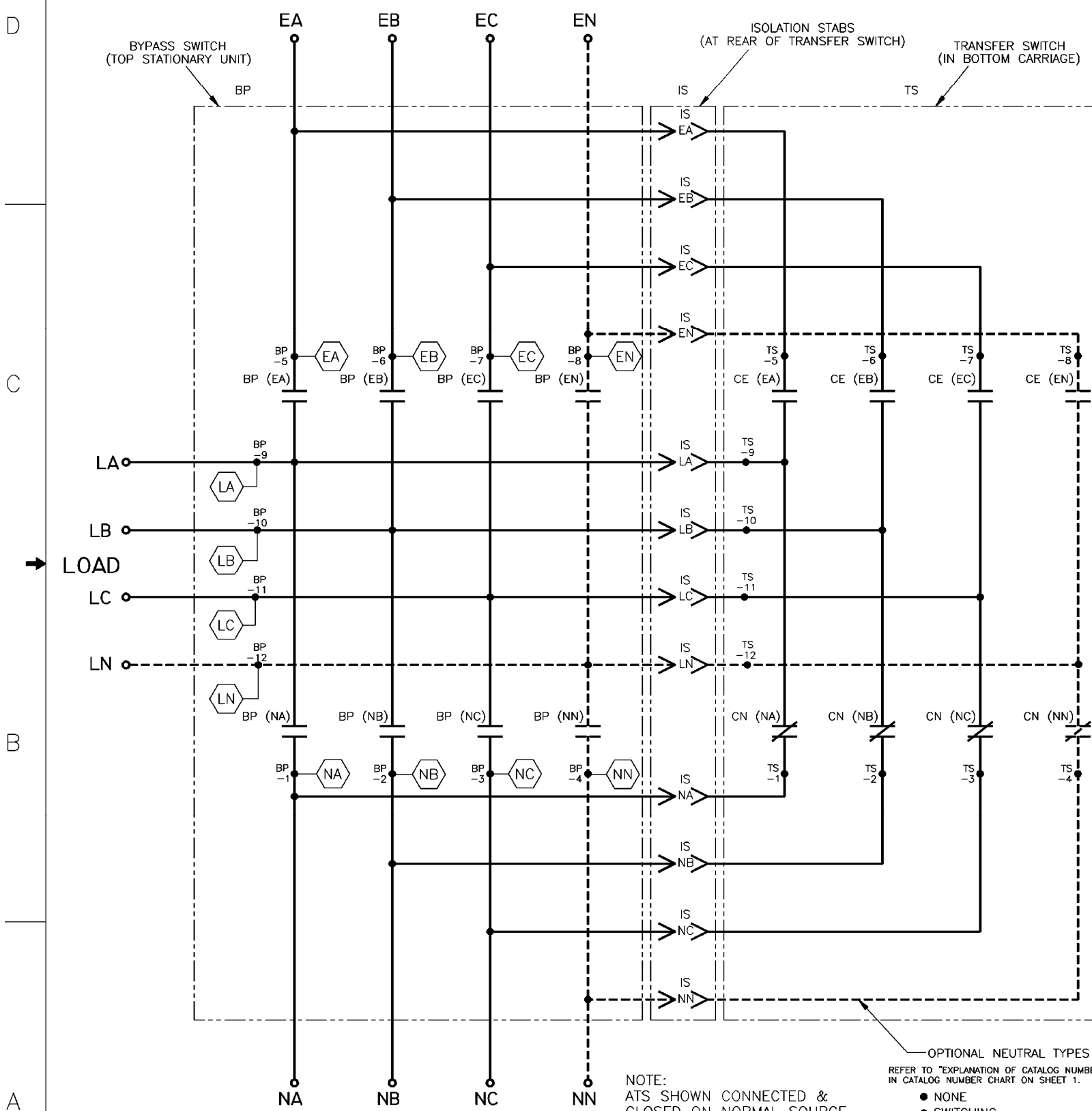
PROJECT NAME: WIRING DIAGRAM 7000 SERIES (7ADTB) GROUP 5 CONTROLS. Includes drawing date (11/97), scale (ACAD), and manufacturer (ASCO POWER TECHNOLOGIES, L.P.).

MAIN POWER POLES

TS OPERATOR CIRCUIT

EMERGENCY

NORMAL



NOTE:  
ATS SHOWN CONNECTED &  
CLOSED ON NORMAL SOURCE.  
BYPASS SWITCH IN  
(AUTOMATIC) POSITION.

- OPTIONAL NEUTRAL TYPES  
REFER TO "EXPLANATION OF CATALOG NUMBER CODES"  
IN CATALOG NUMBER CHART ON SHEET 1.
- NONE
  - SWITCHING
  - SOLID BUS PLATE

MUS	CN (MUS) CONTACTS			
	CLOSED NORMAL	AFTER TDC *	<	OPEN
13-14				
15-16				
17-18				
19-20				

MUS	CE (MUS) CONTACTS			
	OPEN	AFTER TDC *	<	CLOSED EMERG.
13-14				
15-16				
17-18				
19-20				

\* AFTER SOLENOID CORE PASSES THROUGH  
TOP DEAD CENTER POSITION.

PROJECT NAME:  
**WIRING DIAGRAM**  
**7000 SERIES (7ADTB)**  
**GROUP 5 CONTROLS**

BY: YZ DATE: 11/97  
CHECKED: SDH DATE: 11/97

MANUFACTURING TOLERANCES TO BE IN ACCORDANCE WITH AS20 PROCEDURE MP-1-003. FOR PLASTIC PARTS, SEE MP-1-003.

PROPERTY OF ASCO POWER TECHNOLOGIES. USE PERMITTED FOR OUR WORK ONLY. ALL RIGHTS OF DESIGN OR INVENTION ARE RESERVED.

ASCO POWER TECHNOLOGIES, L.P.  
FLORHAM PARK, NEW JERSEY 07932 U.S.A.

157978 WK BK 6/16/01  
SEE ECN

CHANGE LETTER: F  
ECN NO.:  
BY: APP: DATE:

SUBSIDIARY DISTRIBUTION:  
AE AN AP AR AS AT  
CH CN CP CR CS CT  
AC AD AE AF AG AH

COMPUTER GENERATED DRAWING  
SCALE: DMC. NO.  
ACAD FILE

DS617429  
CHANGE LETTER: F  
ECN NO.: 157978  
SHEET 3 OF 8