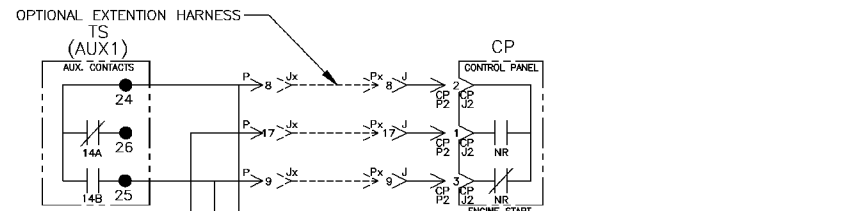
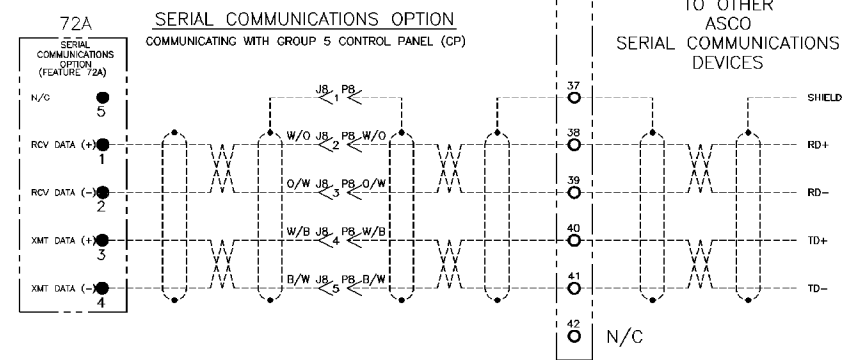
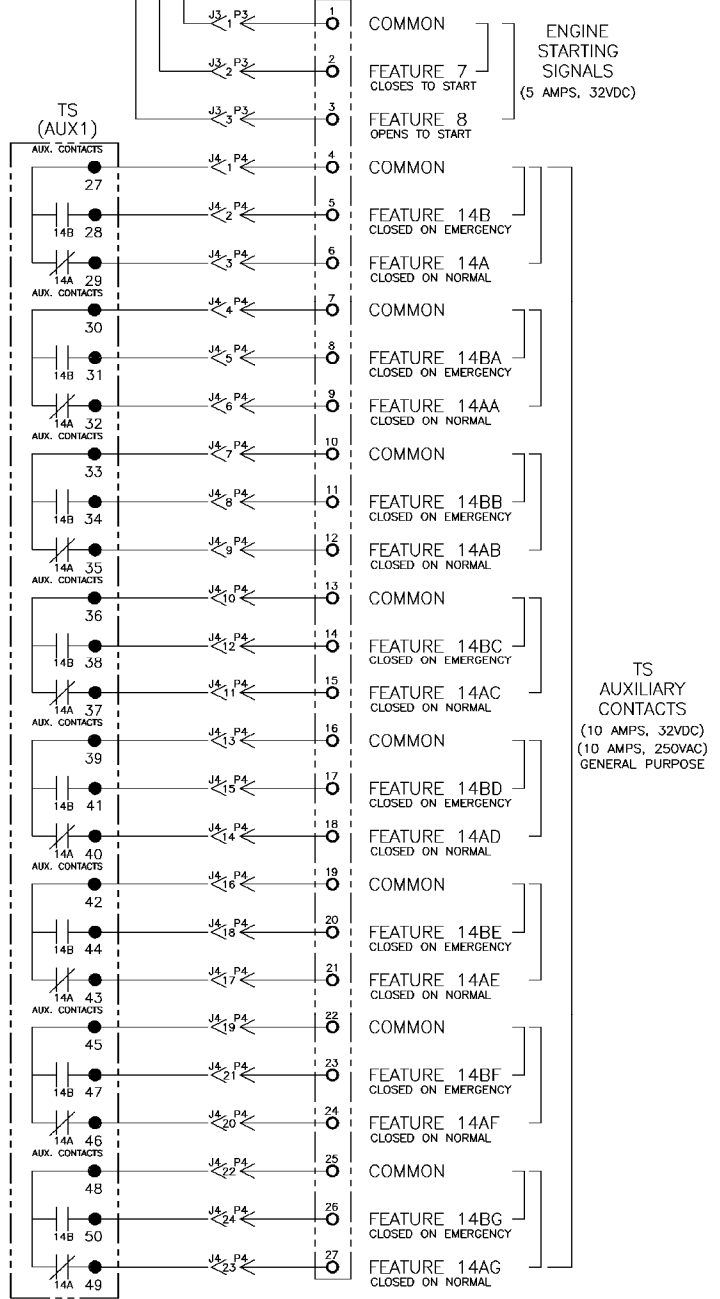
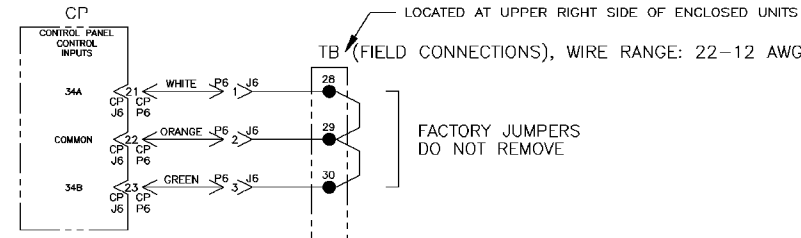
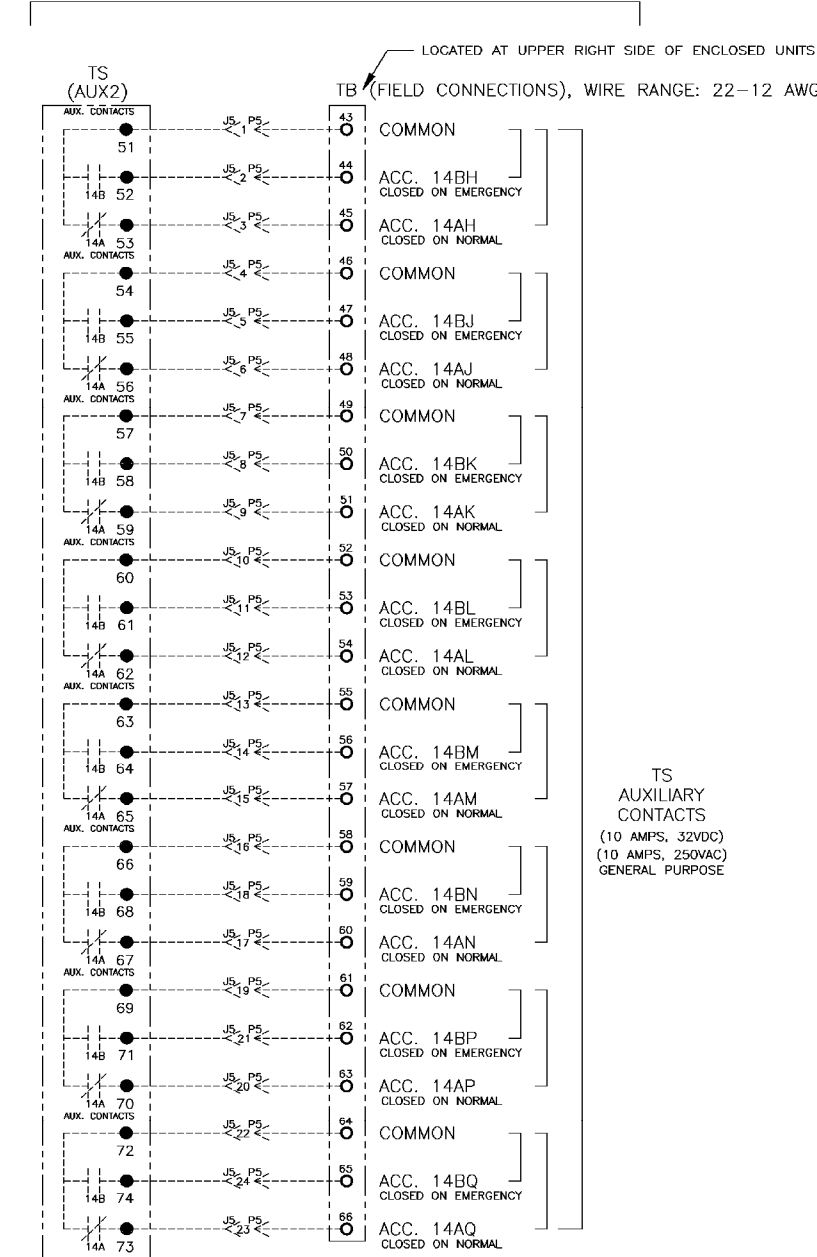


FIELD CONNECTIONS



OPTIONAL ACCESSORY (ACC.) AUXILIARY CONTACTS



- 72A NOTES:
- GROUND SHIELD AT HOST DEVICE ONLY.
 - FIELD WIRING: USE UL LISTED, STRANDED, TWISTED PAIRS, OVERALL FOIL SHIELD WITH STRANDED DRAIN WIRE SUITABLE FOR RS-422 EQUIVALENT TO: (STANDARD 80°C) BELDEN 9842 OR 9829 OR ALPHA 6202C OR 6222C (PLENUM RATED) BELDEN 89729 OR 82729 OR ALPHA 58902

TS AUXILIARY CONTACTS (10 AMPS, 32VDC) (10 AMPS, 250VAC) GENERAL PURPOSE

TS AUXILIARY CONTACTS (10 AMPS, 32VDC) (10 AMPS, 250VAC) GENERAL PURPOSE

B	157978	WK	BK	6/16/01
SEE ECN				
A	155958	BK	BK	11/00
SEE ECN				
	152081	BK	WK	6/99
ISSUE				

PROJECT NAME:		WIRING DIAGRAM	
DRAWN BY: BK		DATE: 6/99	
CHECKED:		MANUFACTURING TOLERANCES TO BE IN ACCORDANCE WITH ASCO PROCEDURE MP-1-003. FOR PLASTIC PARTS SEE MP-1-055.	
DRAFTING APPROVAL:		PROPERTY OF ASCO POWER TECHNOLOGIES. USE PERMITTED FOR OUR WORK ONLY. ALL RIGHTS OF DESIGN OR INVENTION ARE RESERVED.	
FINAL APPROVAL:		ASCO POWER TECHNOLOGIES, L.P. FLORHAM PARK, NEW JERSEY 07932 U.S.A.	

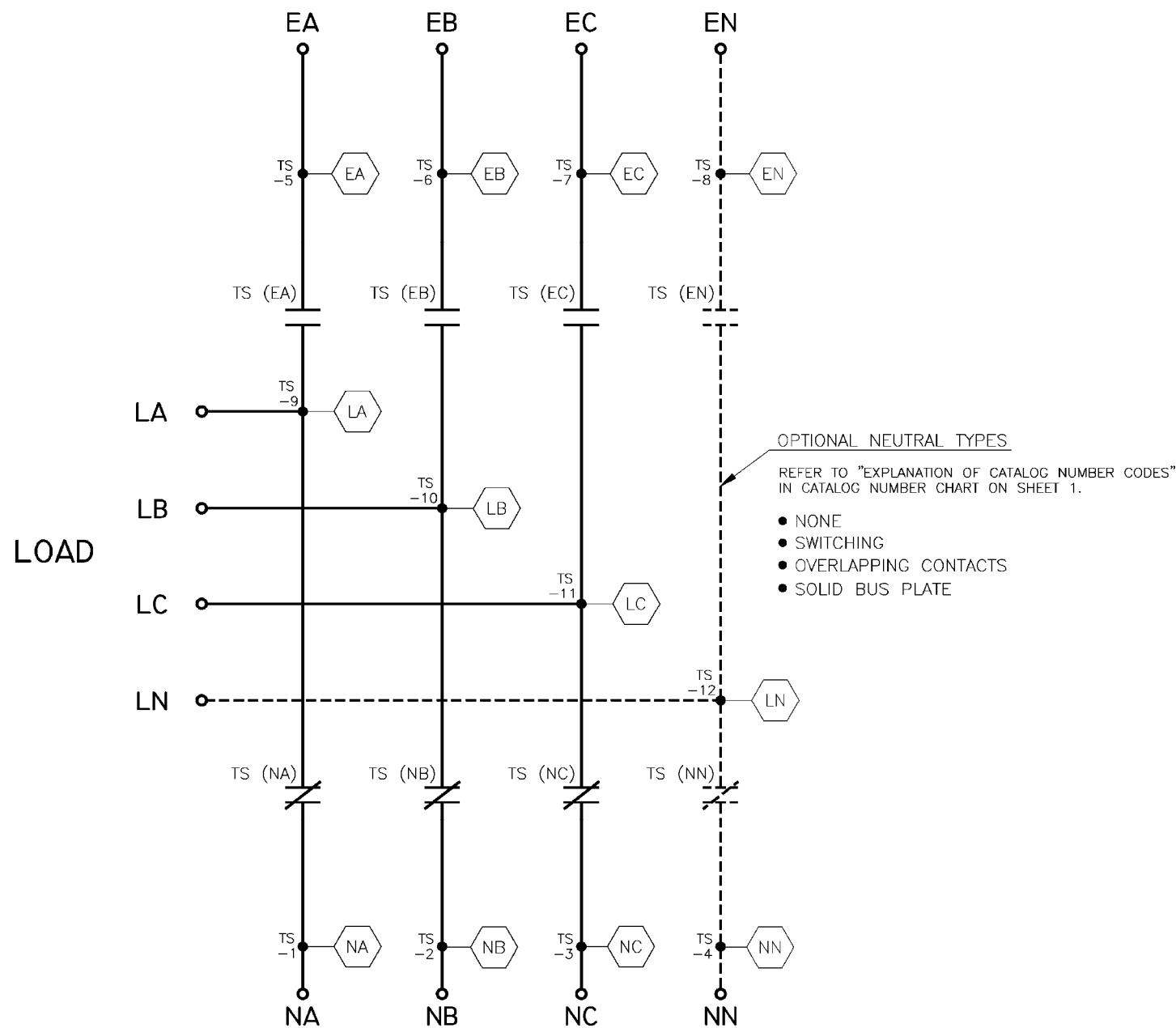
SCALE:	ACAD	FILE
SIZE (DIM. NO.):	DS1627253	
CHANGE LETTER:	ISSN NO. 157978	SHEET 2 OF 8

MAIN POWER POLES

TS OPERATOR CIRCUIT

EMERGENCY

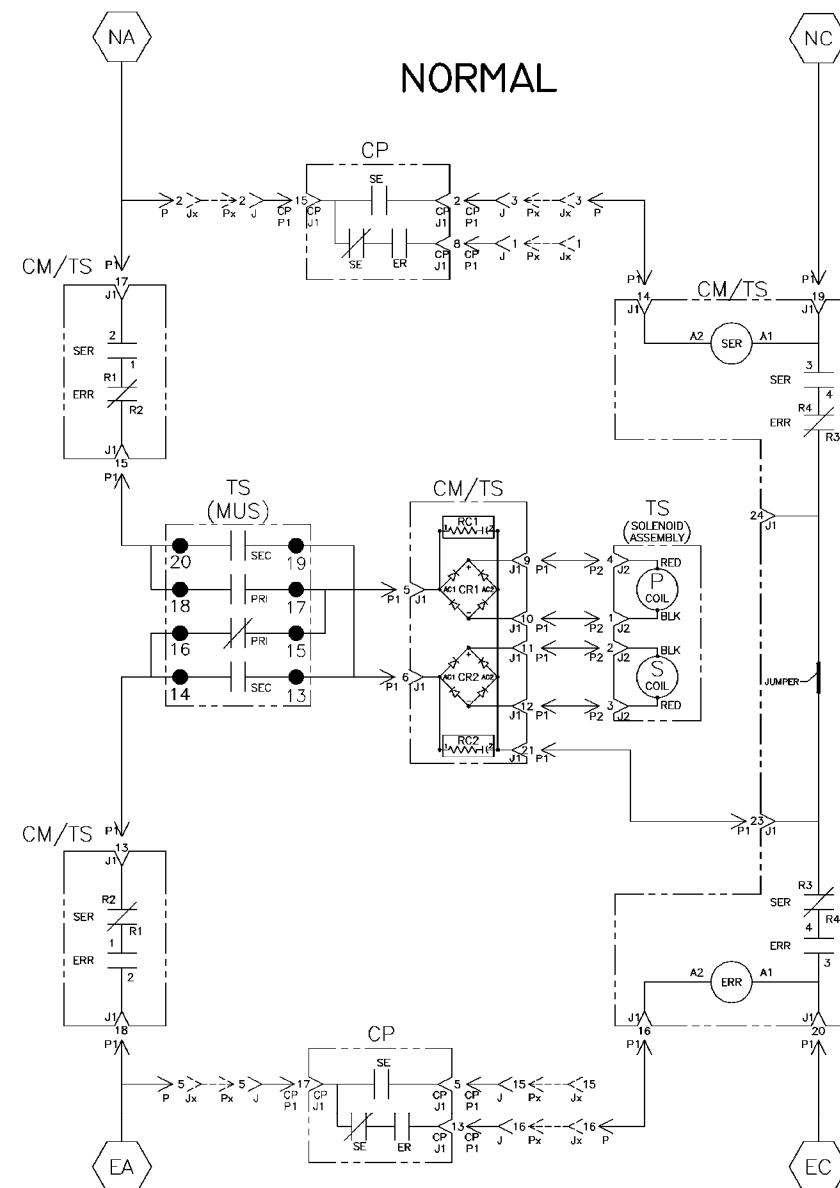
NORMAL



OPTIONAL NEUTRAL TYPES
REFER TO "EXPLANATION OF CATALOG NUMBER CODES" IN CATALOG NUMBER CHART ON SHEET 1.

- NONE
- SWITCHING
- OVERLAPPING CONTACTS
- SOLID BUS PLATE

NOTE:
TS SHOWN CLOSED ON
NORMAL SOURCE.



TS (MUS) CONTACTS					
MUS	SOLENOID POSITION				
	NORM	>	AFTER TOC*	<	EMER
13-14					
15-16					
17-18					
19-20					

* AFTER SOLENOID PASSES THROUGH TOP DEAD CENTER POSITION.

PROJECT NAME: WIRING DIAGRAM
7000 SERIES (7NTS)
GROUP 5 CONTROLS

BY: BK DATE: 6/99
CHECKED: DATE: 6/99
DRAFTING APPROVAL: WK DATE: 6/99
FINAL APPROVAL: DATE: 6/99

MANUFACTURING TOLERANCES TO BE IN ACCORDANCE WITH ASCO PROCEDURE MP-1-003. FOR PLASTIC PARTS SEE MP-1-055.

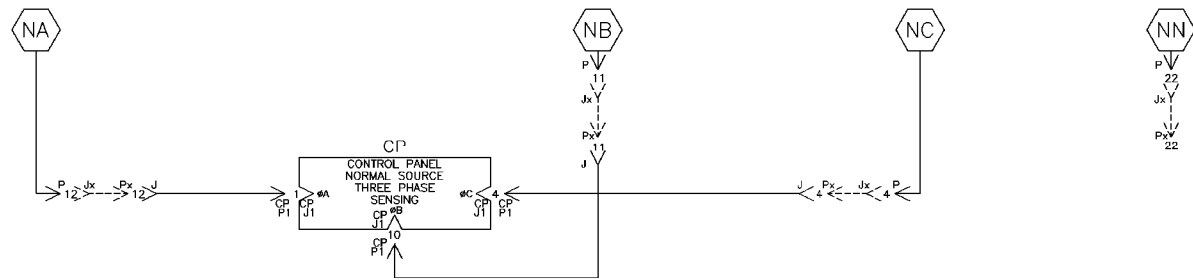
PROPERTY OF ASCO POWER TECHNOLOGIES. USE PERMITTED FOR OUR WORK ONLY. ALL RIGHTS OF DESIGN OR INVENTION ARE RESERVED.

ASCO POWER TECHNOLOGIES, L.P.
FLORHAM PARK, NEW JERSEY 07932 U.S.A.

B	15797B	WK	BK	6/16/01
	SEE ECN			
A	15595B	BK	BK	11/00
	SEE ECN			
	152081	BK	WK	6/99
	ISSUE			
CHANGE LETTER	EDN NO.	BY	APP.	DATE
SUBSIDIARY DISTRIBUTION				
AE	AN	AM	AL	
CH	AV	AA	PS	
AG	AP	AC	AS	
COMPUTER GENERATED DRAWING				
SCALE	ACAD	FILE		
SIZE	DWG. NO.			
	DS1627253			
CHANGE LETTER	EDN NO.	ISSUE NO.	SHEET 3 OF 8	
B	15797B	157978		

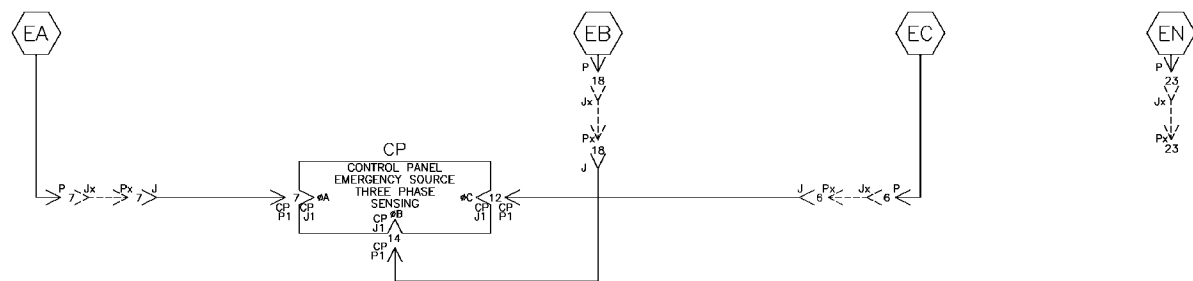
NORMAL SOURCE CIRCUITS

NORMAL



EMERGENCY SOURCE CIRCUITS

EMERGENCY



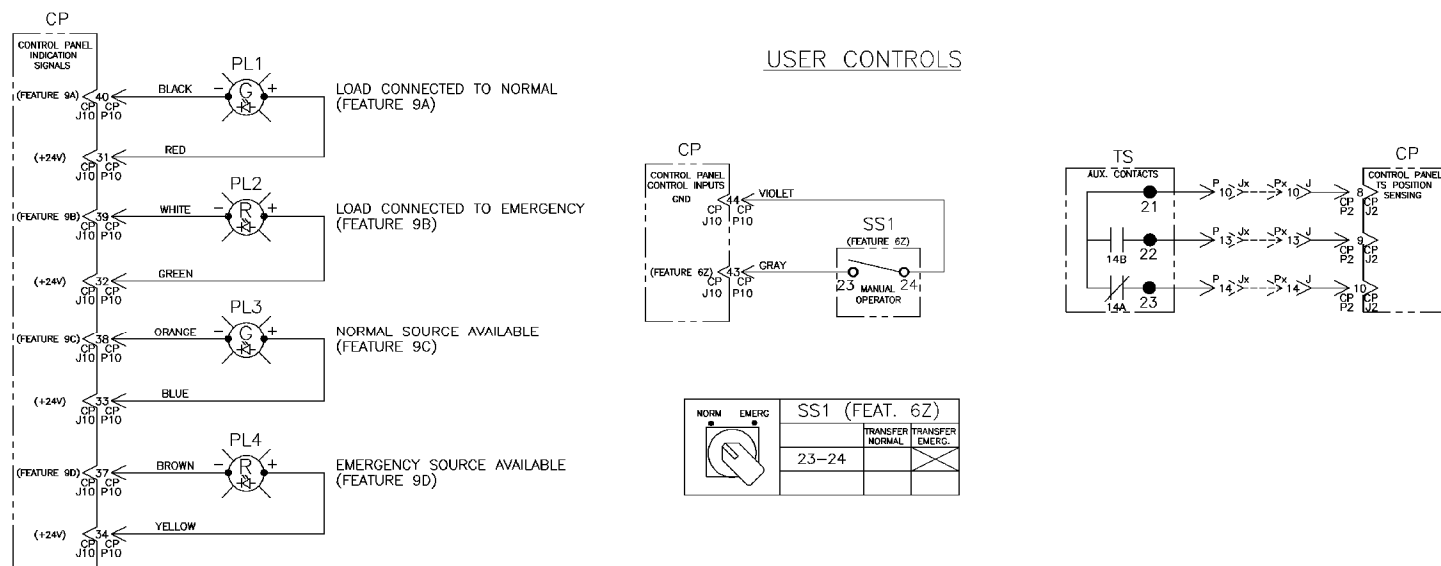
LOAD TERMINAL CIRCUITS

LOAD



CONTROL SIGNALS & INDICATION

USER CONTROLS



PROJECT NAME	WIRING DIAGRAM			MANUFACTURING TOLERANCES TO BE IN ACCORDANCE WITH ASCO PROCEDURE MP-1-003. FOR PLASTIC PARTS SEE MP-1-055.	ASSEM. REF. NO.
DRAWN BY	BK	DATE	6/99	PROPERTY OF ASCO POWER TECHNOLOGIES. USE PERMITTED FOR OUR WORK ONLY. ALL RIGHTS OF DESIGN OR INVENTION ARE RESERVED.	SCALE
CHECKED		DRAFTING APPROVAL	WK	6/99	ASCO
FINAL APPROVAL		CHANGE LETTER	B	ISSN NO.	157978
		EDN NO.	157978	BY	APP.
		DATE	6/16/01		
SUBSIDIARY DISTRIBUTION		COMPUTER GENERATED DRAWING			
AE	AN	AW	AX	AY	AZ
CH	AV	AW	AX	AY	AZ
AG	AP	AC	AS	AT	AV
THIRD ANGLE PROJECTION		SIZE Dwg. No.			
THIRD ANGLE PROJECTION		DS627253			
THIRD ANGLE PROJECTION		SHEET 4 OF 8			

WIRE RUN LISTING

Table 1: HARNESS LOCATOR 605454 (P1,P2,J3) MAIN TS. Lists wire numbers 1-30 with columns for WIRE No., HARNESS, CLR, and AWC (16).

Table 2: HARNESS LOCATOR 605454-002 (J5) OPTIONAL AUX. CONTACTS. Lists wire numbers 70-93 with columns for WIRE No., HARNESS, CLR, and AWC (16).

Table 3: HARNESS LOCATOR 605454-005 (P6) FIELD INPUTS. Lists wire numbers 100-104 with columns for WIRE No., HARNESS, CLR, and AWC (22).

Table 4: HARNESS LOCATOR 605454-007 (P8,1B) OPTIONAL SERIAL I/O. Lists wire numbers 160-213 with columns for WIRE No., HARNESS, CLR, and AWC (22).

Table 5: HARNESS LOCATOR 605454-008 (P5,1B) OPT. AUX. CONTACTS. Lists wire numbers 70-92 with columns for WIRE No., HARNESS, CLR, and AWC (16).

Table 6: HARNESS LOCATOR 309320-005 (JCP-P1,CP-P2) CONTROL PANEL. Lists wire numbers 200-215 with columns for WIRE No., HARNESS, CLR, and AWC (16).

Table 7: ADDITIONAL WIRING. Lists wire numbers 1-21 with columns for WIRE No., ADDITIONAL WIRING, CLR, and AWC.

Table 8: HARNESS LOCATOR 605454-001 (J4) STANDARD AUX. CONTACTS. Lists wire numbers 40-63 with columns for WIRE No., HARNESS, CLR, and AWC (16).

Table 9: HARNESS LOCATOR 605454-002 (J5) OPTIONAL SERIAL I/O. Lists wire numbers 160-213 with columns for WIRE No., HARNESS, CLR, and AWC (22).

Table 10: HARNESS LOCATOR 605454-003 (J6) FIELD OUTPUTS. Lists wire numbers 130-153 with columns for WIRE No., HARNESS, CLR, and AWC (16).

Table 11: HARNESS LOCATOR 605454-004 (J7) FIELD OUTPUTS. Lists wire numbers 130-153 with columns for WIRE No., HARNESS, CLR, and AWC (16).

Table 12: HARNESS LOCATOR 713083-001 (CP-P10) DOOR CONTROLS & INDICATORS. Lists wire numbers 170-181 with columns for WIRE No., HARNESS, CLR, and AWC (22).

Table 13: HARNESS LOCATOR 4B3763 (JCP-P1,CP-P2) CONTROL PANEL. Lists wire numbers 16-21 with columns for WIRE No., HARNESS, CLR, and AWC (16).

Revision table with columns for CHANGE LETTER, EDR NO., BY, APP., DATE, and SUBSIDIARY DISTRIBUTION.

Project information block including PROJECT NAME (WIRING DIAGRAM 7000 SERIES (7NTS) GROUP 5 CONTROLS), DRAWN BY, DATE, and ASCO logo.