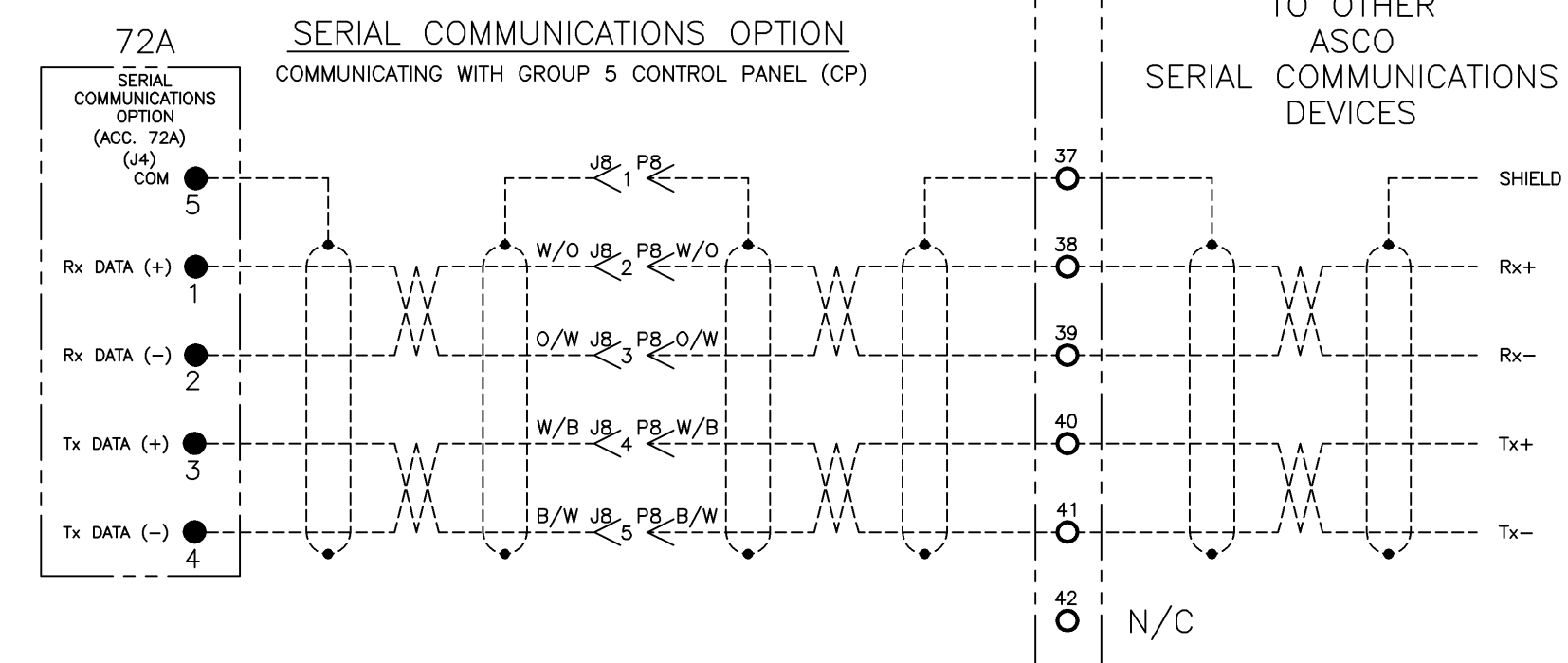
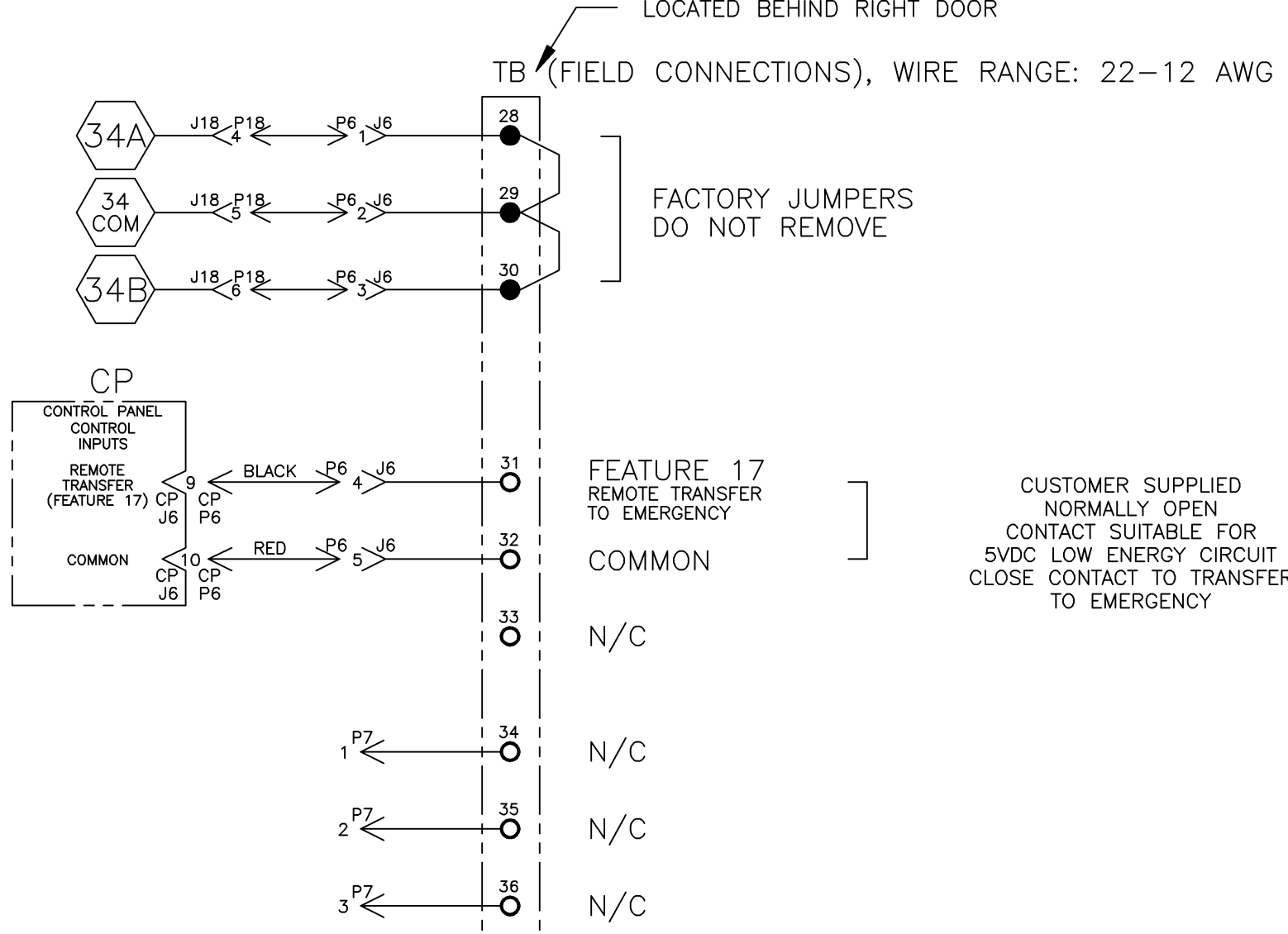
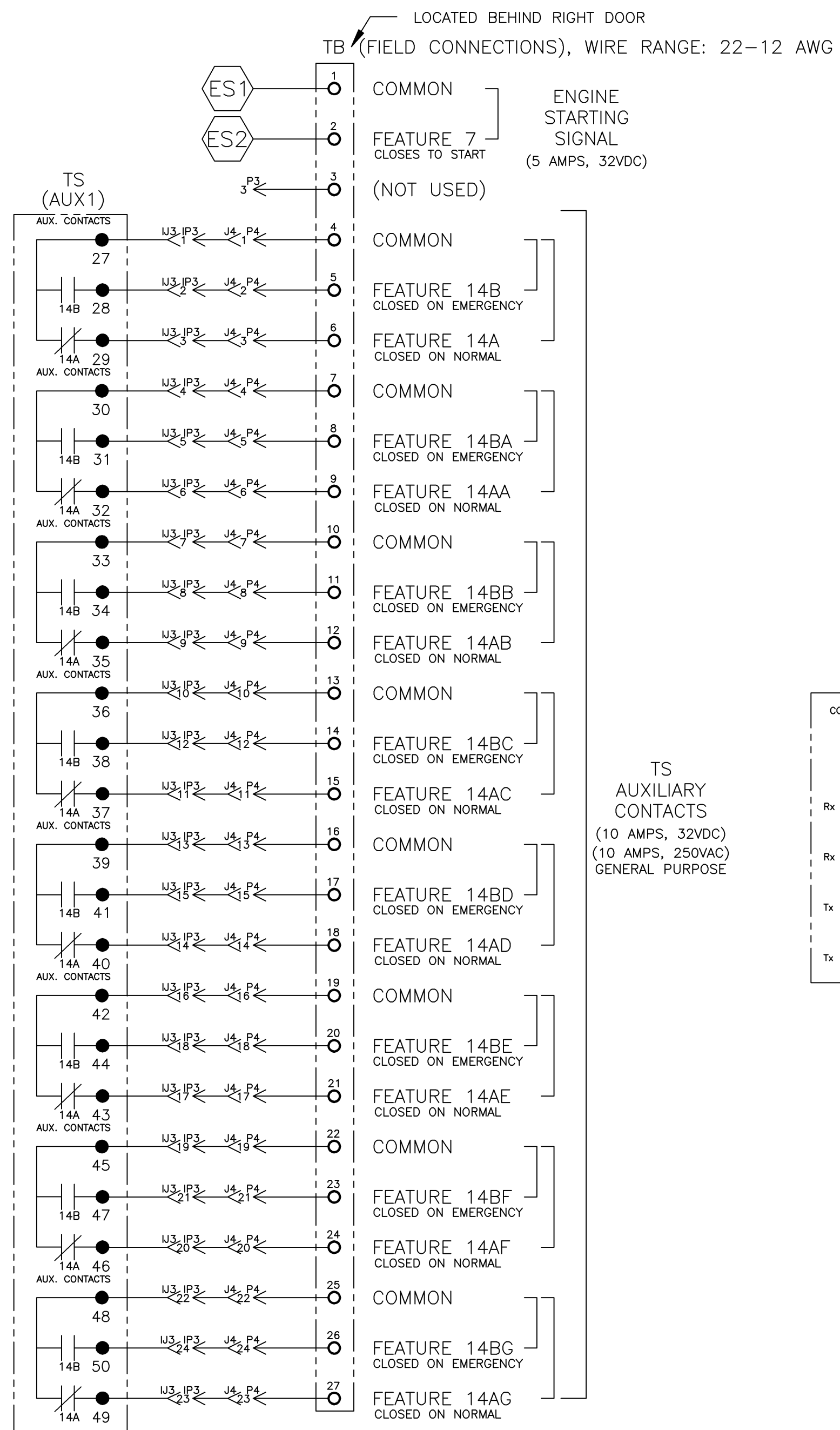


FIELD CONNECTIONS



PROJECT NAME:		201421 BWM BK 08/16/04	
WIRING DIAGRAM		SEE ECN	
7000 SERIES (H7ATB)		SUBSIDIARY DISTRIBUTION	
"H" FRAME, GROUP 5 CONTROLS		THIRD ANGLE PROJECTION	
BY	DATE	MANUFACTURING TOLERANCES TO BE IN ACCORDANCE WITH ASCO PROCEDURE MP-1-003. FOR PLASTIC PARTS SEE MP-1-055	ASSEM. REF. NO.
SDH	03/03/03		
CHECKED		PROPERTY OF ASCO POWER TECHNOLOGIES. USE PERMITTED FOR OUR WORK ONLY. ALL RIGHTS OF DESIGN OR INVENTION ARE RESERVED.	SCALE 1:1 ACAD FILE
DRAFTING APPROVAL			SIZE DWG. NO. DS 735259
FINAL APPROVAL	SDH 03/03/03	ASCO POWER TECHNOLOGIES, L.P. FLORHAM PARK, NEW JERSEY 07932 U.S.A.	CHANGE LETTER ECN NO. 201421 SHEET 2 OF 8

MAIN POWER POLES

TS OPERATOR CIRCUIT

EMERGENCY

NORMAL

EMERGENCY

D

D

C

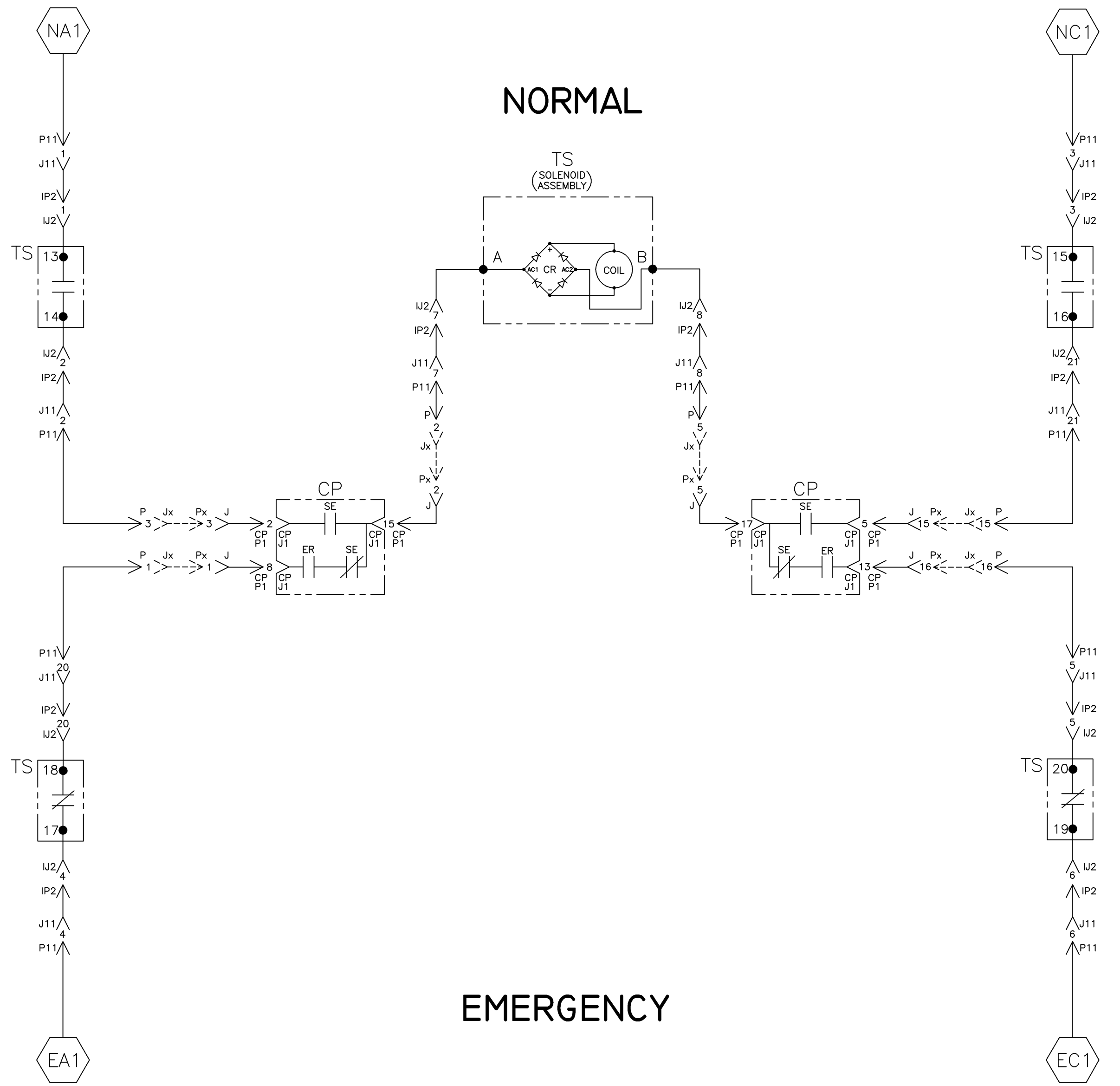
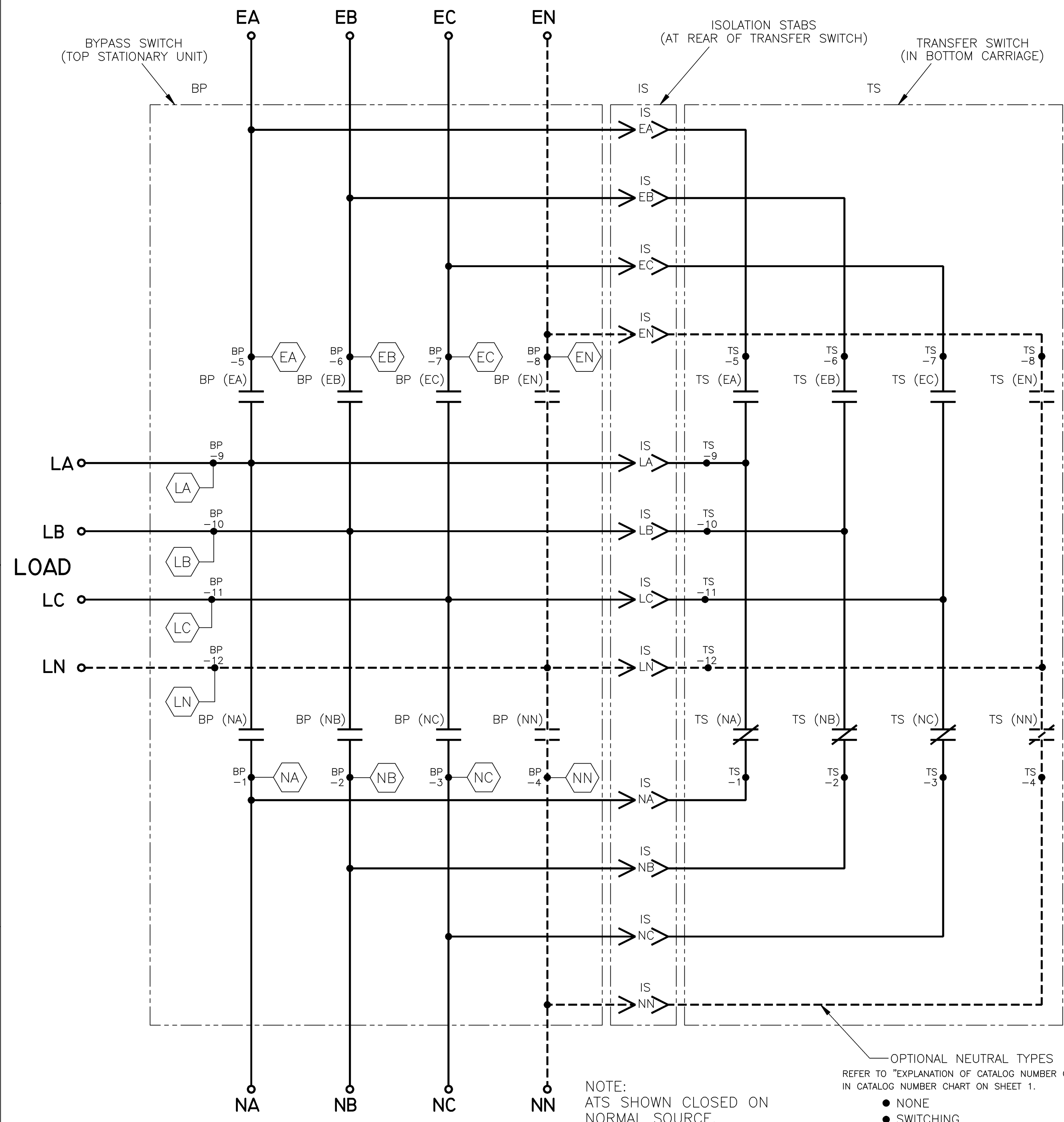
C

B

B

A

A



NOTE: ATS SHOWN CLOSED ON NORMAL SOURCE. BYPASS SWITCH IN (AUTOMATIC) POSITION.

OPTIONAL NEUTRAL TYPES REFER TO "EXPLANATION OF CATALOG NUMBER CODES" IN CATALOG NUMBER CHART ON SHEET 1.

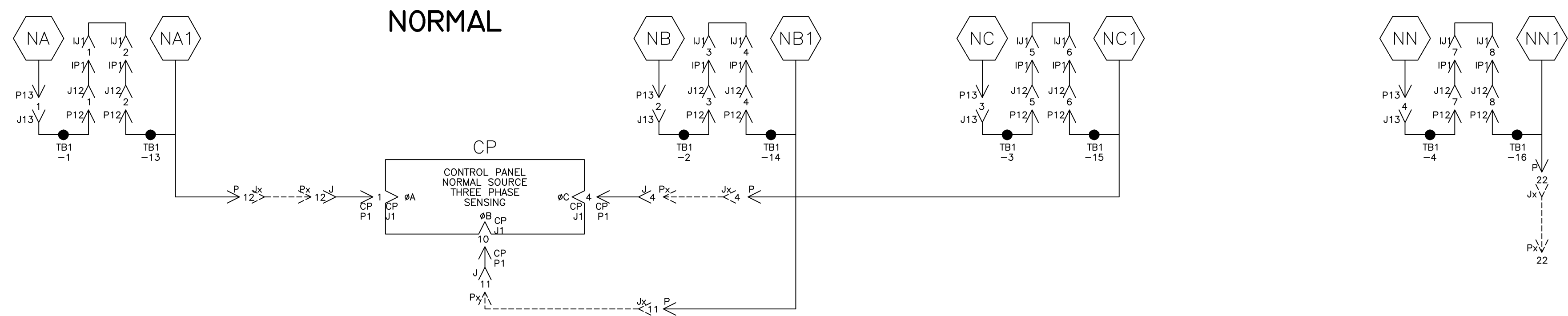
- NONE
- SWITCHING
- OVERLAPPING CONTACTS
- SOLID BUS PLATE

TS	TS CONTROL CONTACTS			
	SOLENOID POSITION			
	CLOSED BEFORE NORMAL	BEFORE TDC	BEFORE CLOSED	BEFORE EMERG
13-14		>	<	
15-16				
17-18				
19-20				

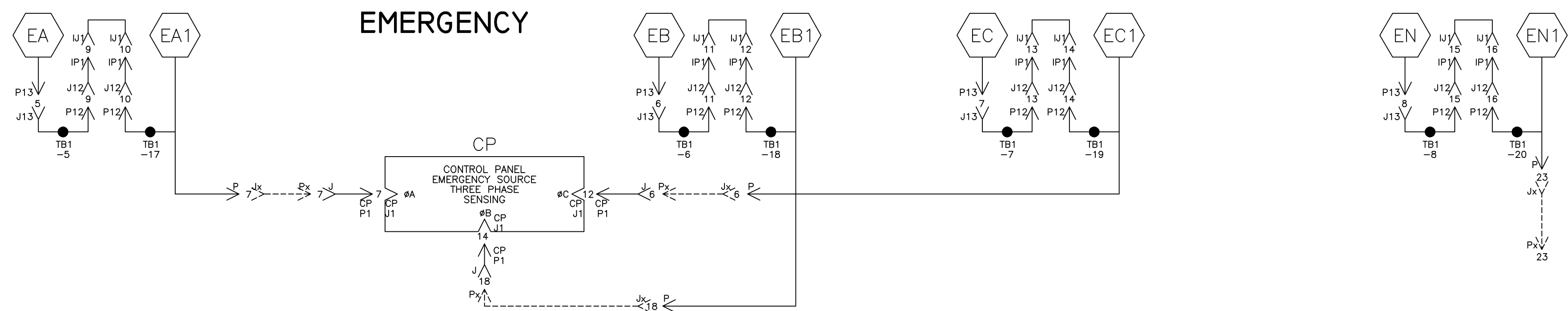
TDC (TOP DEAD CENTER) TRANSFER SWITCH TEST & ADJUSTMENT PROCEDURE SPECIFICS CONTROL CUT-OFF (CONTACT OPENING) SETTING.

PROJECT NAME:		201421 BWM BK 08/16/04	
WIRING DIAGRAM		SEE ECN	
7000 SERIES (H7ATB)		SUBSIDIARY DISTRIBUTION	
"H" FRAME, GROUP 5 CONTROLS		THIRD ANGLE PROJECTION	
BY	DATE	MANUFACTURING TOLERANCES TO BE IN ACCORDANCE WITH ASCO PROCEDURE MP-1-003. FOR PLASTIC PARTS SEE MP-1-055	ASSEM. REF. NO.
SDH	03/03/03		
CHECKED		PROPERTY OF ASCO POWER TECHNOLOGIES. USE PERMITTED FOR OUR WORK ONLY. ALL RIGHTS OF DESIGN OR INVENTION ARE RESERVED.	
DRAWING APPROVAL		SCALE 1:1	ACAD FILE
FINAL APPROVAL	SDH 03/03/03	SIZE	DWG. NO. DS735259
		ASCO	ASCO POWER TECHNOLOGIES, L.P. FLORHAM PARK, NEW JERSEY 07932 U.S.A.
		CHANGE LETTER	ECN NO. 201421 SHEET 3 OF 8

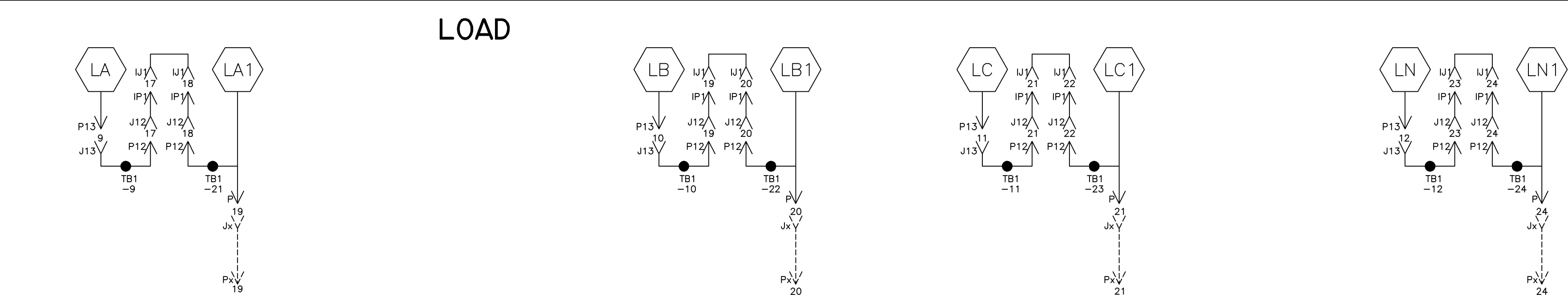
NORMAL SOURCE CIRCUITS



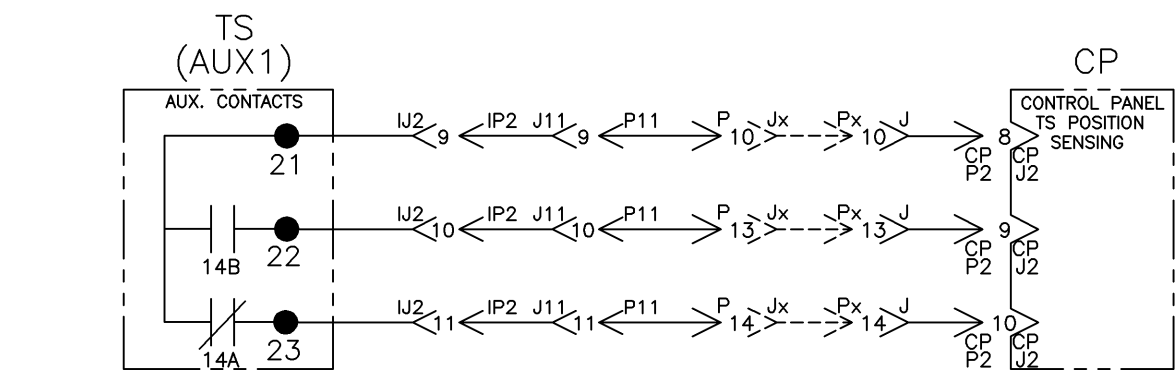
EMERGENCY SOURCE CIRCUITS



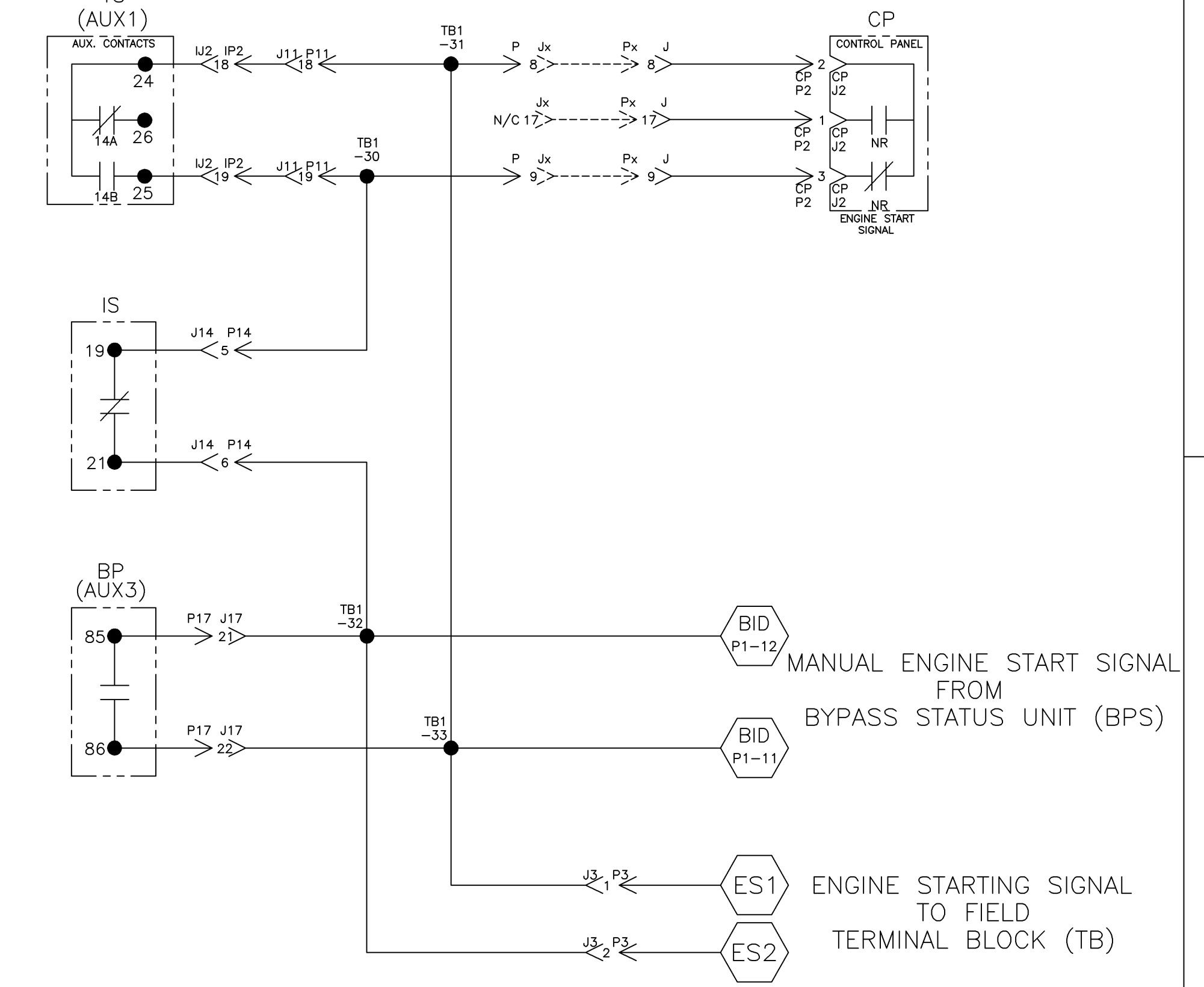
LOAD TERMINAL CIRCUITS



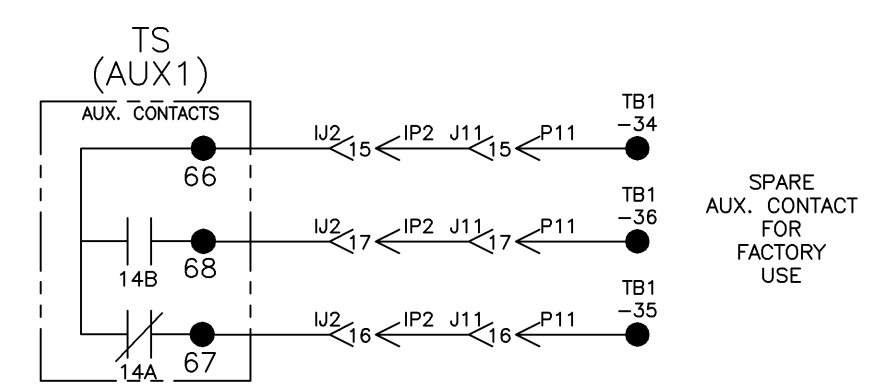
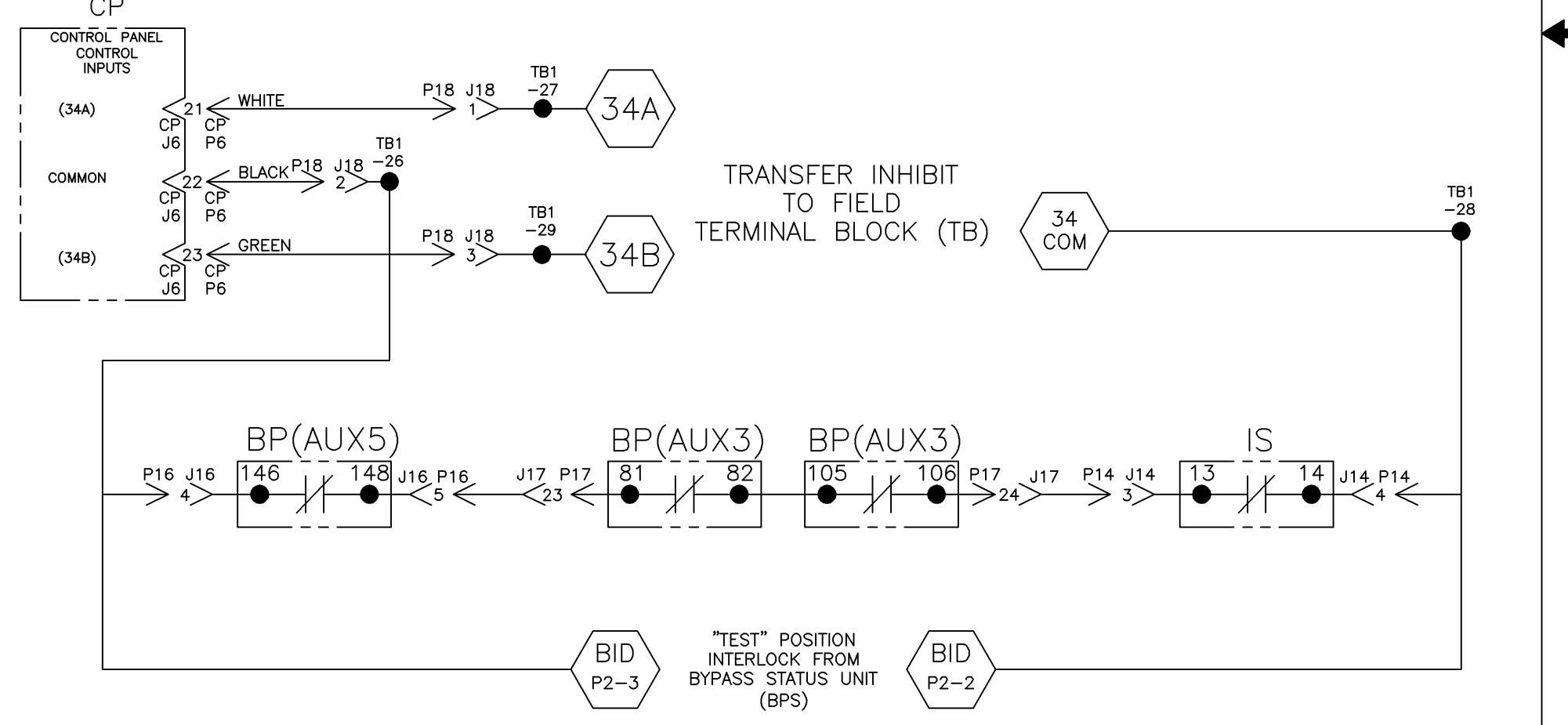
CONTROL SIGNALS & INDICATION



ENGINE START CIRCUIT

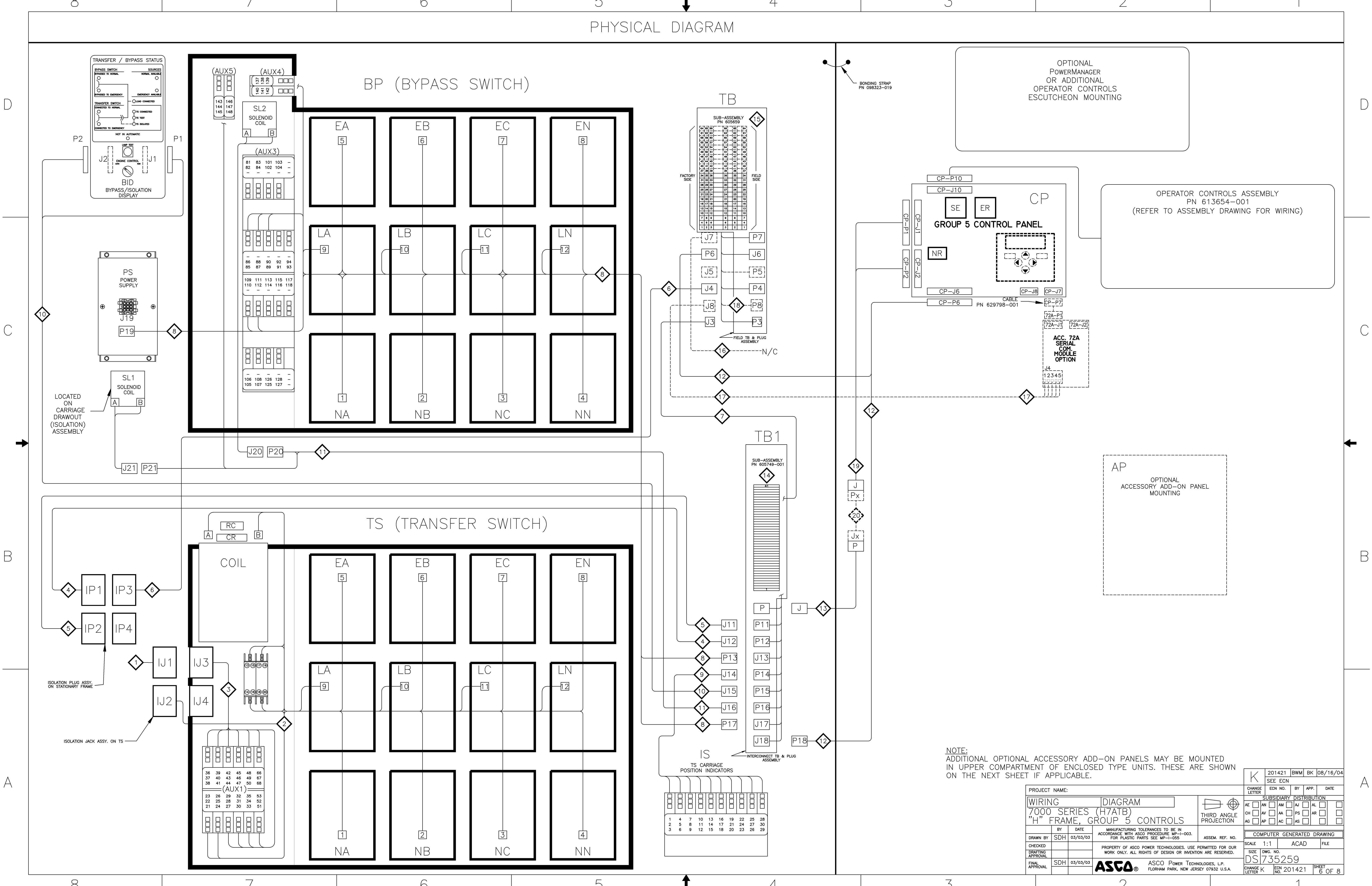


CONTROL PANEL/BYPASS-ISOLATION INTERLOCKS



PROJECT NAME:		201421 BWM BK 08/16/04	
WIRING DIAGRAM		SEE ECN	
7000 SERIES (H7ATB)		SUBSIDIARY DISTRIBUTION	
"H" FRAME, GROUP 5 CONTROLS		<input type="checkbox"/> AN <input type="checkbox"/> AM <input type="checkbox"/> AJ <input type="checkbox"/> AL <input type="checkbox"/> <input type="checkbox"/> CH <input type="checkbox"/> AV <input type="checkbox"/> AA <input type="checkbox"/> PS <input type="checkbox"/> AR <input type="checkbox"/> <input type="checkbox"/> AG <input type="checkbox"/> AP <input type="checkbox"/> AC <input type="checkbox"/> AS <input type="checkbox"/>	
BY DATE	MANUFACTURING TOLERANCES TO BE IN ACCORDANCE WITH ASCO PROCEDURE MP-1-003. FOR PLASTIC PARTS SEE MP-1-005.	ASSEMB. REF. NO.	COMPUTER GENERATED DRAWING
DRAWN BY SDH 03/03/03			SCALE 1:1 ACAD FILE
CHECKED	PROPERTY OF ASCO POWER TECHNOLOGIES. USE PERMITTED FOR OUR WORK ONLY. ALL RIGHTS OF DESIGN OR INVENTION ARE RESERVED.		SIZE DWG. NO. DS735259
DRAFTING APPROVAL			CHANGE LETTER ECN NO. 201421 SHEET 4 OF 8
FINAL APPROVAL SDH 03/03/03	ASCO ASCO POWER TECHNOLOGIES, L.P. FLORHAM PARK, NEW JERSEY 07932 U.S.A.		

PHYSICAL DIAGRAM



NOTE:
ADDITIONAL OPTIONAL ACCESSORY ADD-ON PANELS MAY BE MOUNTED
IN UPPER COMPARTMENT OF ENCLOSED TYPE UNITS. THESE ARE SHOWN
ON THE NEXT SHEET IF APPLICABLE.

PROJECT NAME:		201421 BWM BK 08/16/04	
WIRING DIAGRAM		SEE ECN	
7000 SERIES (H7ATB)		SUBSIDIARY DISTRIBUTION	
"H" FRAME, GROUP 5 CONTROLS		THIRD ANGLE PROJECTION	
BY	DATE	MANUFACTURING TOLERANCES TO BE IN ACCORDANCE WITH ASCO PROCEDURE MP-1-003. FOR PLASTIC PARTS SEE MP-1-005.	ASSEM. REF. NO.
DRAWN BY	SDH	03/03/03	
CHECKED			
DRAFTING			
APPROVAL			
FINAL APPROVAL	SDH	03/03/03	
SCALE 1:1		ACAD FILE	
SIZE DWG. NO.		COMPUTER GENERATED DRAWING	
DS 735259			
CHANGE LETTER	ECN	NO.	DATE
K	201421	BWM BK	08/16/04
PROPERTY OF ASCO POWER TECHNOLOGIES, L.P. FLORHAM PARK, NEW JERSEY 07932 U.S.A.		SHEET 6 OF 8	

WIRE RUN LISTING

HARNESS LOCATOR table for HARNESS 605674-001 (J1) TS. Lists wire numbers 1-12 and their corresponding harness locations.

HARNESS LOCATOR table for HARNESS 605674-006-A (IP1,J12) STATIONARY FRAME. Lists wire numbers 1-12 and their corresponding harness locations.

HARNESS LOCATOR table for HARNESS 605674-007-A (J3,TB1) ENGINE START. Lists wire numbers 120, 121, 122, and 123.

HARNESS LOCATOR table for HARNESS 736828-006 (J14,S) ISOLATION AUX. CONTACTS. Lists wire numbers 150-158 and 190-199.

HARNESS LOCATOR table for HARNESS 736828-004 (P6,P18) INTERNAL CONTROL & FIELD INPUTS. Lists wire numbers 210-244.

HARNESS LOCATOR table for HARNESS 736828-001 (J2) TS. Lists wire numbers 1-43, including REMOVE WIRES and ADD WIRES sections.

HARNESS LOCATOR table for HARNESS 605674-006-A (IP2,J11) STATIONARY FRAME. Lists wire numbers 1-43, including REMOVE WIRES and ADD WIRES sections.

HARNESS LOCATOR table for HARNESS 736828-003 (P13, P17, P19, BP) BP. Lists wire numbers 1-170, including REMOVE WIRES and ADD WIRES sections.

HARNESS LOCATOR table for HARNESS 736828-005 (J15, BID-P1, BID-P2) BYPASS ISOLATION DISPLAY. Lists wire numbers 121-405.

HARNESS LOCATOR table for HARNESS 736828-004 (P6,P18) INTERNAL CONTROL & FIELD INPUTS. Lists wire numbers 215-263.

HARNESS LOCATOR table for HARNESS 736828-002 (J3) TS STD. AUX. CONTACTS. Lists wire numbers 50-73.

HARNESS LOCATOR table for HARNESS 605674-006 (IP3,J4) STATIONARY FRAME. Lists wire numbers 50-73.

HARNESS LOCATOR table for HARNESS 736828-005 (J16, P20, P21, J20) BP/IS INTERLOCKS. Lists wire numbers 150-192.

HARNESS LOCATOR table for HARNESS 309320-006 (P,J) CONTROL PANEL EXTENSION. Lists wire numbers 310-312.

HARNESS LOCATOR table for HARNESS 736828-004 (P6,P18) INTERNAL CONTROL & FIELD INPUTS. Lists wire numbers 215-263.

Project information block including PROJECT NAME, CHANGE LETTER, DATE, SCALE, and ASCO logo.

WIRE RUN LISTING

Table 14: HARNESS LOCATOR. SUB-ASSEMBLY 605749-001 (TB1,P,P11,P12,J13,P14,P15,P16,J17,J18) MAIN INTERCONNECT ASSEMBLY. Lists wire numbers, sub-assemblies, and CLR/AWG values.

Table 15: HARNESS LOCATOR. SUB-ASSEMBLY 605749-001 (TB1,P,P11,P12,J13,P14,P15,P16,J17,J18) MAIN INTERCONNECT ASSEMBLY (CONTINUED). Lists wire numbers, sub-assemblies, and CLR/AWG values.

Table 16: HARNESS LOCATOR. SUB-ASSEMBLY 605659 (P3,P4,J6,P7,TB) STD. FIELD TB. Lists wire numbers, sub-assemblies, and CLR/AWG values.

Table 17: HARNESS LOCATOR. HARNESS 605454-005 (J8) OPTIONAL SERIAL I/O. Lists wire numbers, harnesses, and CLR/AWG values.

Table 18: HARNESS LOCATOR. HARNESS 605454-007 (P8,TB) OPTIONAL SERIAL I/O. Lists wire numbers, harnesses, and CLR/AWG values.

Table 19: HARNESS LOCATOR. HARNESS 483763 (J,CP-P1,CP-P2) CONTROL PANEL. Lists wire numbers, harnesses, and CLR/AWG values.

Table 20: HARNESS LOCATOR. HARNESS 309320-005 OPTIONAL 8 IN. EXTENSION HARNESS. Lists wire numbers, harnesses, and CLR/AWG values.

Table 21: WIRE No. and AWG. Lists wire numbers and AWG values.

Table 22: WIRE No. and AWG. Lists wire numbers and AWG values.

Project information block including PROJECT NAME, WIRING DIAGRAM, 7000 SERIES (H7ATB) 'H' FRAME, GROUP 5 CONTROLS, and various drawing and manufacturing details.