



TECHNICAL DATA & ACCESSORIES

BYPASS SWITCH AUXILIARY CONTACTS

BP AUXILIARY CONTACT	STATUS (*)	BP SWITCH POSITION (AUX3)		
		EMERG	OFF	NORMAL
81-82	●			
83-84				
85-86	●			
87-88	●			
89-90	●			
91-92				
93-94				
101-102				
103-104				
105-106	●			
107-108				
109-110	●			
111-112	●			
113-114				
115-116				
117-118				
125-126				
127-128				

BYPASS SWITCH OPERATOR AUXILIARY CONTACTS

BP AUXILIARY CONTACT	STATUS (*)	BP HANDLE POSITION (AUX4)	
		EMERG (OUT)	NORMAL (IN)
137-138	●		
137-139			
140-141	●		
140-142			

BYPASS SWITCH OPERATOR AUXILIARY CONTACTS

BP AUXILIARY CONTACT	STATUS (*)	BP SWITCH HANDLE POSITION (AUX5)		
		OFF	<> ±10'	BYPASS (±90')
143-144	●			
143-145	●			
146-147	●			
146-148	●			

ISOLATION (TRANSFER SWITCH CARRIAGE POSITION) AUXILIARY CONTACTS

IS AUXILIARY CONTACT	STATUS (*)	TRANSFER SWITCH CARRIAGE POSITION				
		CONNECT	> <	TEST	> <	ISOLATE
1-2	●					
1-3	●					
4-5	●					
4-6	●					
7-8	●					
7-9	●					
10-11	●					
10-12	●					
13-14	●					
13-15	●					
16-17	●					
16-18	●					
19-20	●					
19-21	●					
22-23	●					
22-24	●					
25-26	●					
25-27	●					
28-29	●					
28-30	●					

(\*) CONTACT AVAILABILITY STATUS:

- CONTACT PROVIDED & USED IN CIRCUITRY
- "BLANK" CONTACT NOT USED. IF PHYSICALLY AVAILABLE, CONTACT IS FOR FACTORY USE ONLY!

PROJECT NAME:		E 210450 BWM BK 10/24/06	
WIRING DIAGRAM		SEE ECN	
7000 SERIES (H7ADTB)		SUBSIDIARY DISTRIBUTION	
"H" FRAME, GROUP 5 CONTROLS		THIRD ANGLE PROJECTION	
CHANGE LETTER	ECN NO.	BY	APP. DATE
AE	AM	AJ	AL
CH	AV	AA	PS
AG	AP	AC	AS
DRAWN BY MM 09/11/03		MANUFACTURING TOLERANCES TO BE IN ACCORDANCE WITH ASCO PROCEDURE MP-I-003. FOR PLASTIC PARTS SEE MP-I-005.	
CHECKED BK 09/11/03		PROPERTY OF ASCO POWER TECHNOLOGIES. USE PERMITTED FOR OUR WORK ONLY. ALL RIGHTS OF DESIGN OR INVENTION ARE RESERVED.	
DRAFTING APPROVAL BK 09/11/03		ASCO POWER TECHNOLOGIES, L.P. FLORHAM PARK, NEW JERSEY 07932 U.S.A.	
FINAL APPROVAL		COMPUTER GENERATED DRAWING	
SCALE 1:1		ACAD FILE	
SIZE DWG. NO. DS747352		CHANGE LETTER ECN NO. 210450 SHEET 2 OF 10	

# FIELD CONNECTIONS

D

D

C

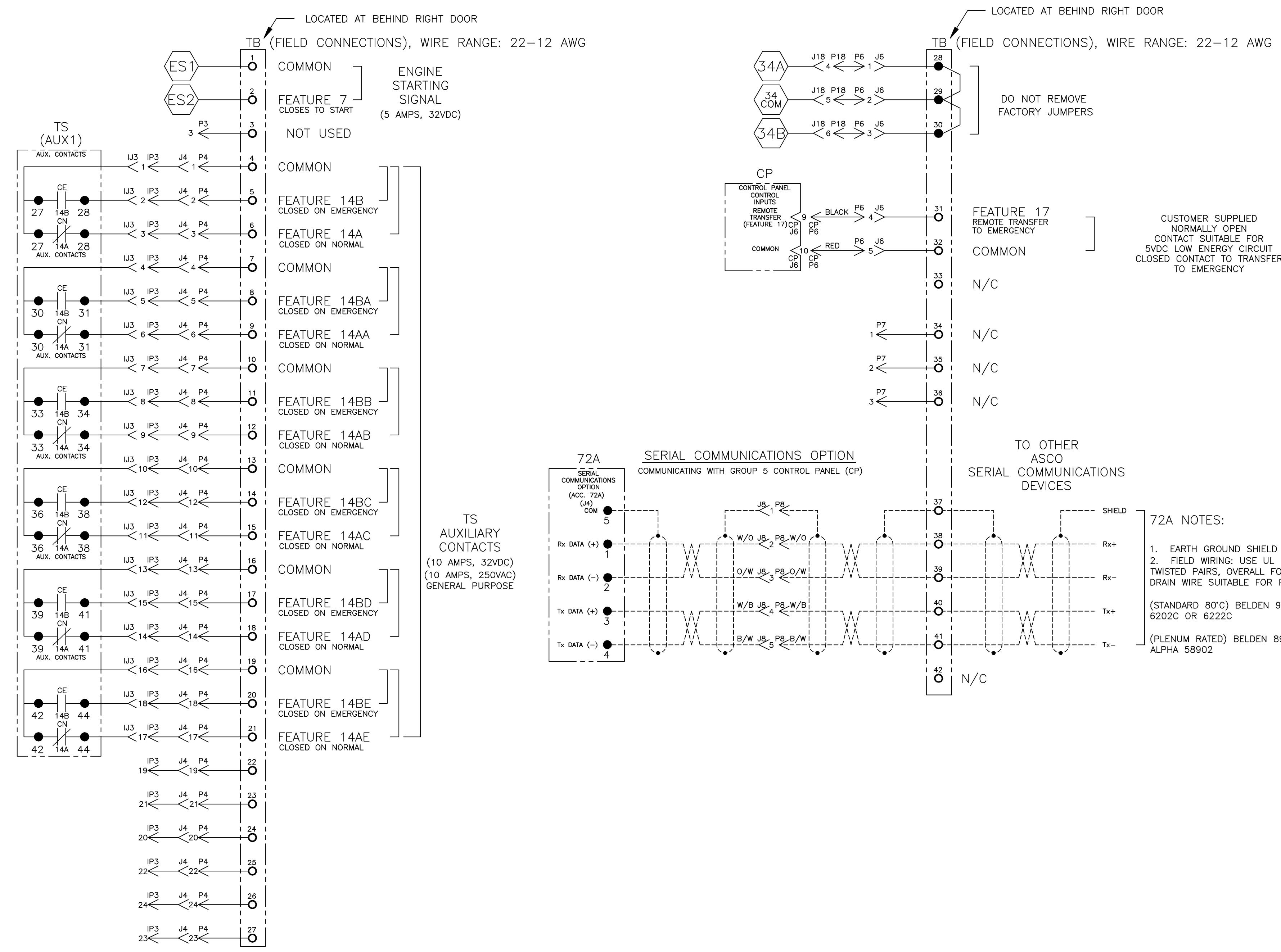
C

B

B

A

A



PROJECT NAME:		E 210450 BWM BK 10/24/06	
WIRING DIAGRAM		SEE ECN	
7000 SERIES (H7ADTB)		SUBSIDIARY DISTRIBUTION	
"H" FRAME, GROUP 5 CONTROLS		THIRD ANGLE PROJECTION	
BY	DATE	MANUFACTURING TOLERANCES TO BE IN ACCORDANCE WITH ASCO PROCEDURE MP-1-003. FOR PLASTIC PARTS SEE MP-1-005.	ASSEM. REF. NO.
MM	09/11/03	PROPERTY OF ASCO POWER TECHNOLOGIES. USE PERMITTED FOR OUR WORK ONLY. ALL RIGHTS OF DESIGN OR INVENTION ARE RESERVED.	SCALE 1:1 ACAD FILE
CHECKED	BK	09/11/03	SIZE DWG. NO. DS747352
DRAFTING	BK	09/11/03	CHANGE LETTER ECN NO. 210450
APPROVAL			SHEET 3 OF 10

MAIN POWER POLES

TS OPERATOR CIRCUIT

EMERGENCY

NORMAL

D

D

C

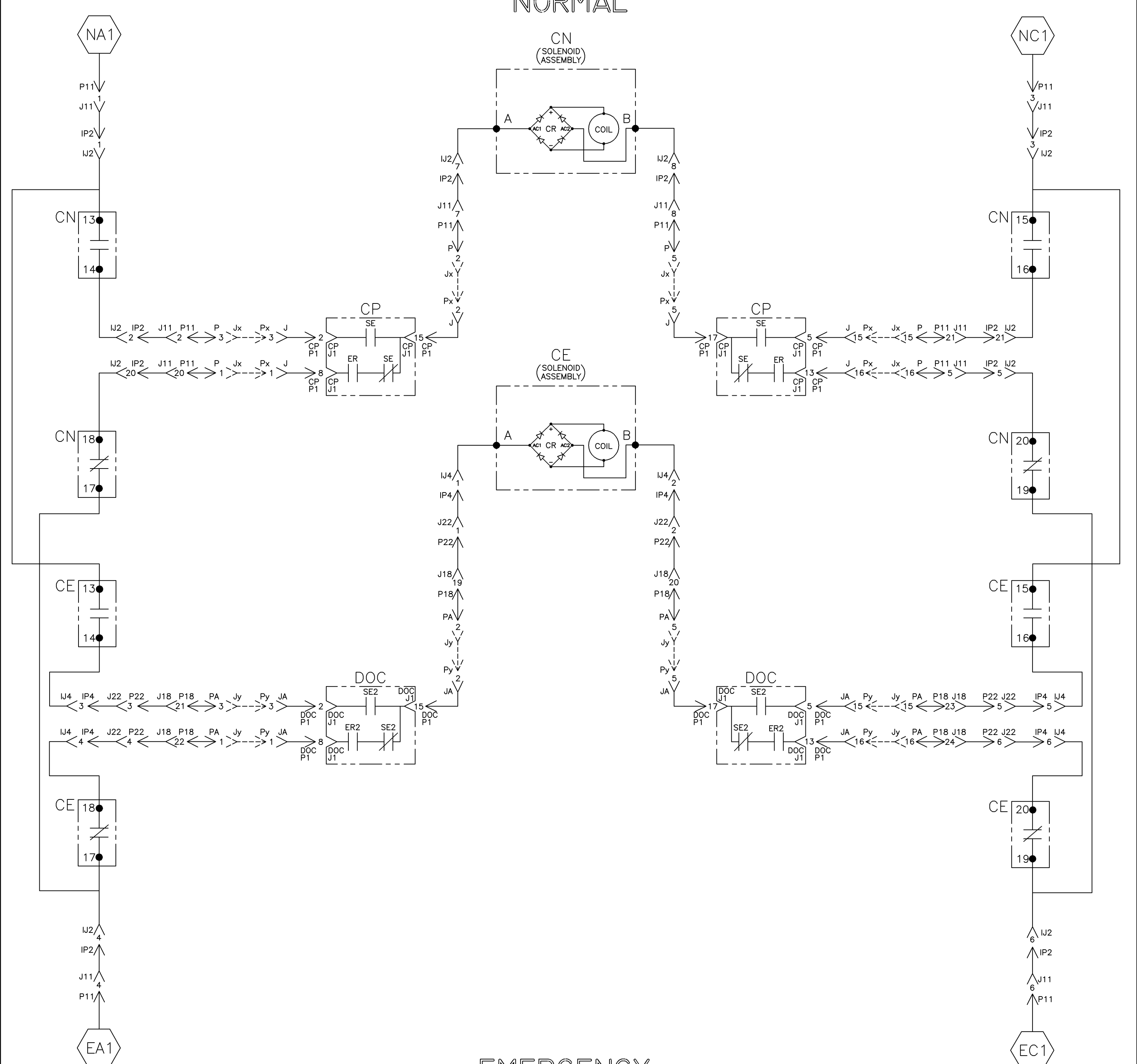
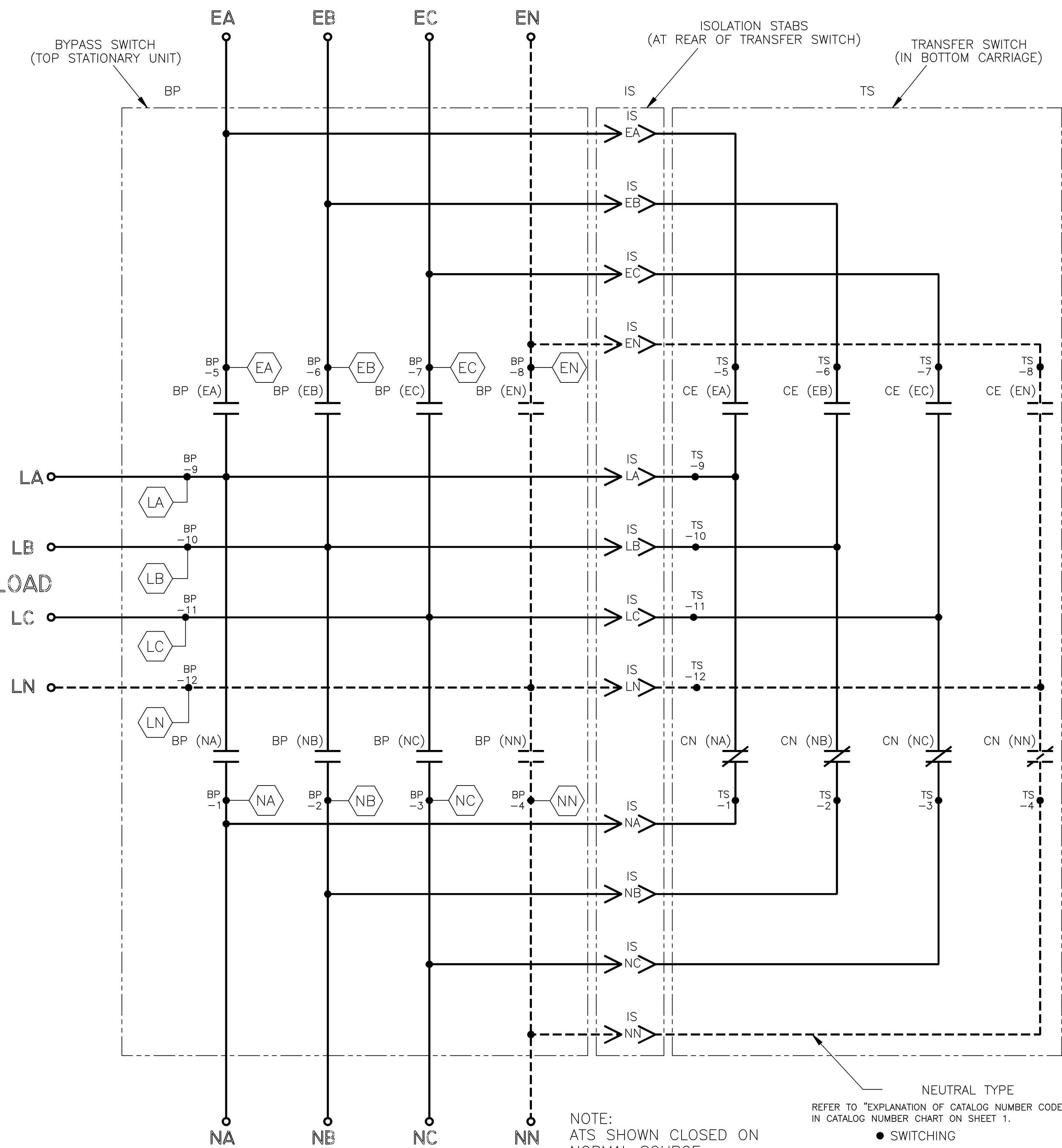
C

B

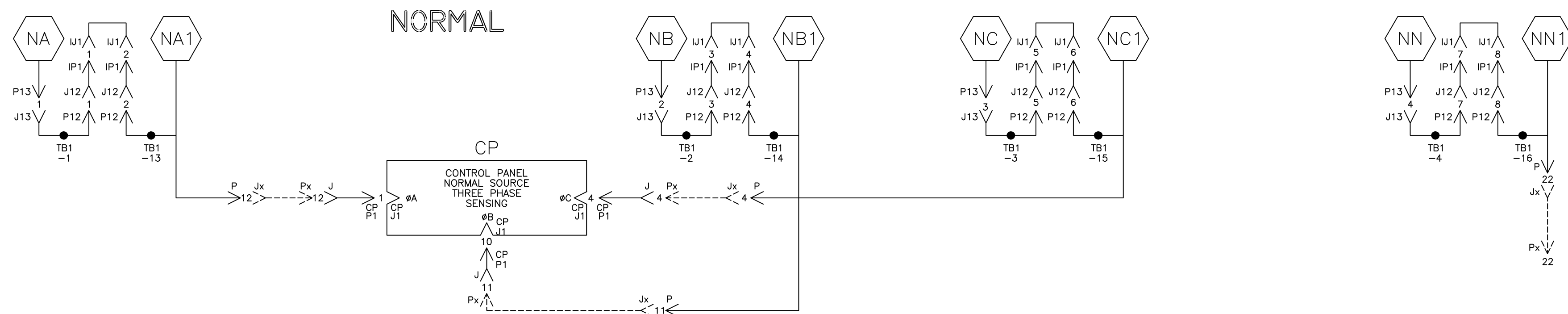
B

A

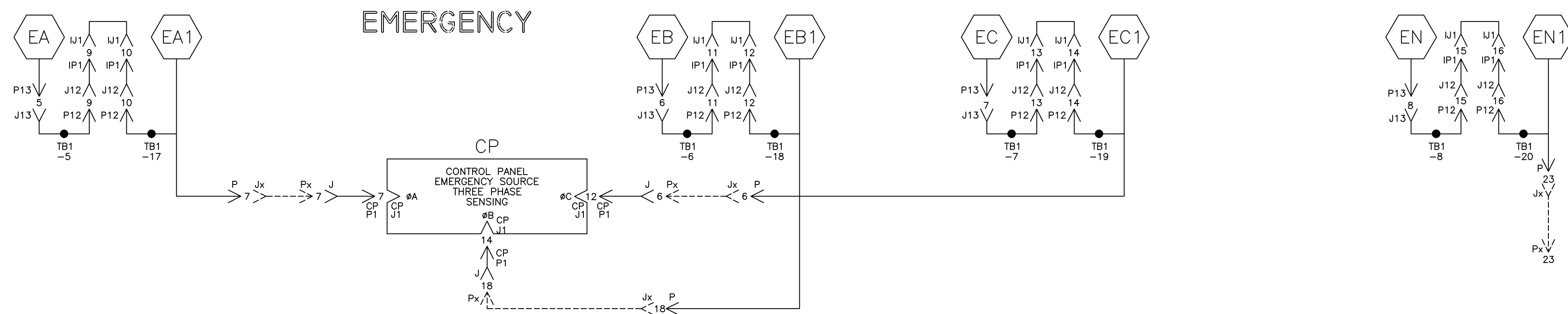
A



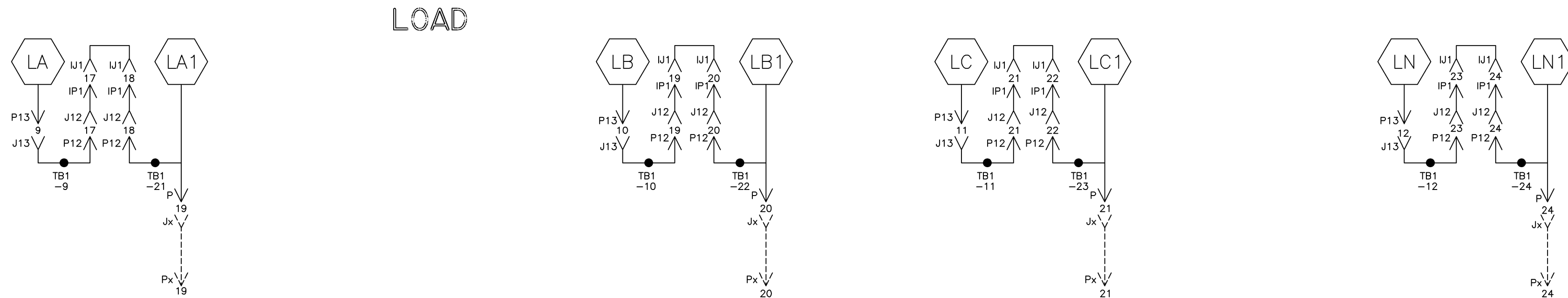
NORMAL SOURCE CIRCUITS



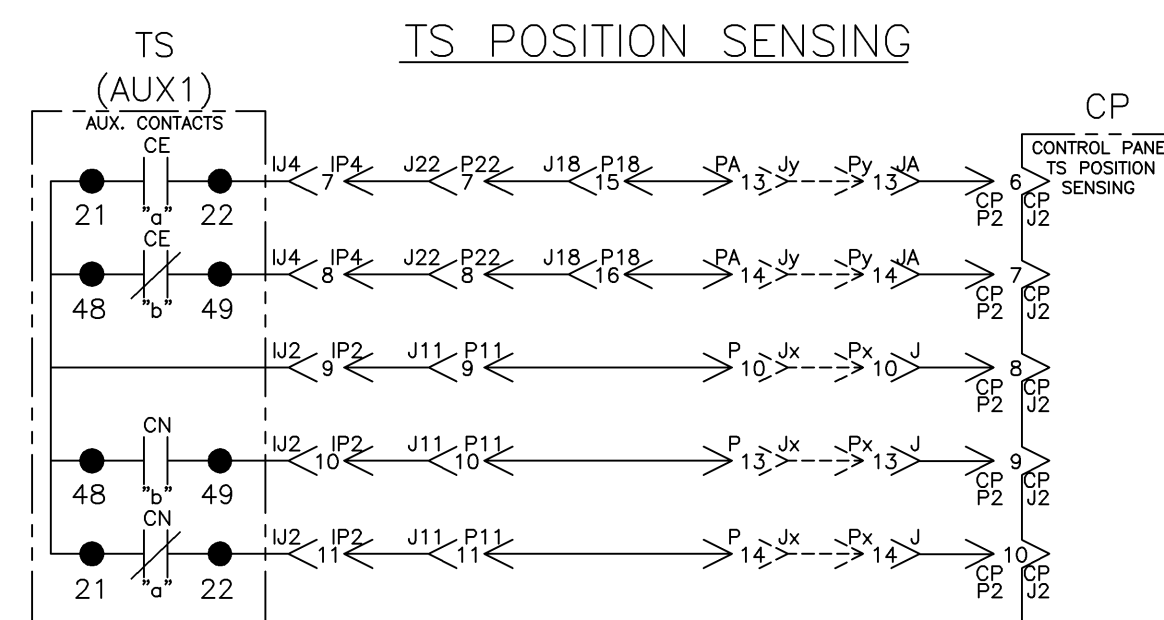
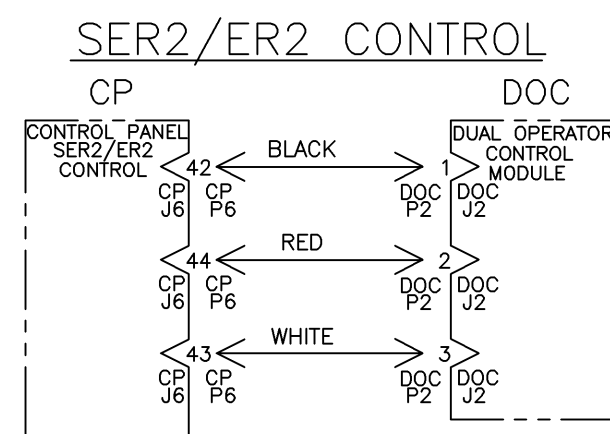
EMERGENCY SOURCE CIRCUITS



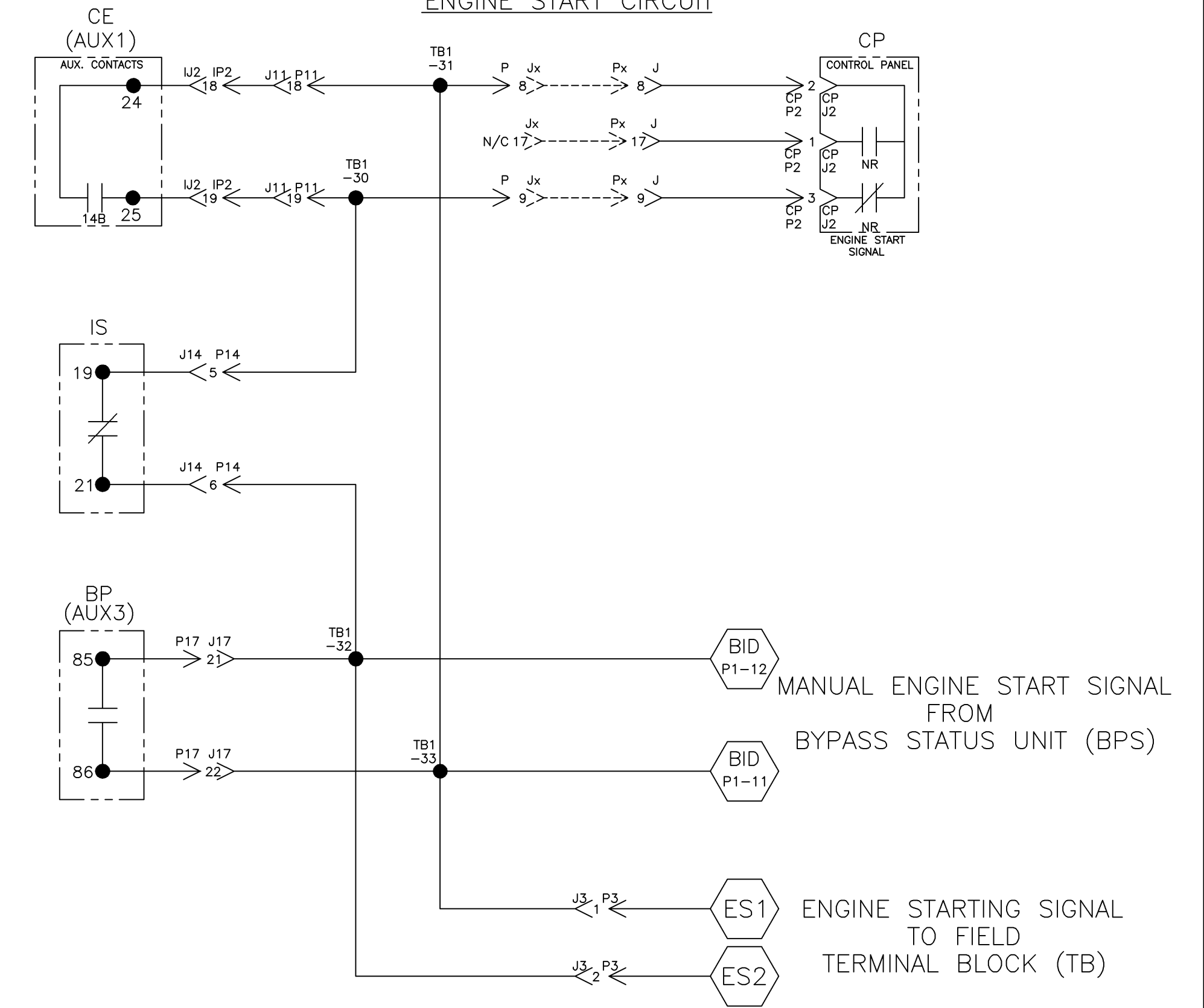
LOAD TERMINAL CIRCUITS



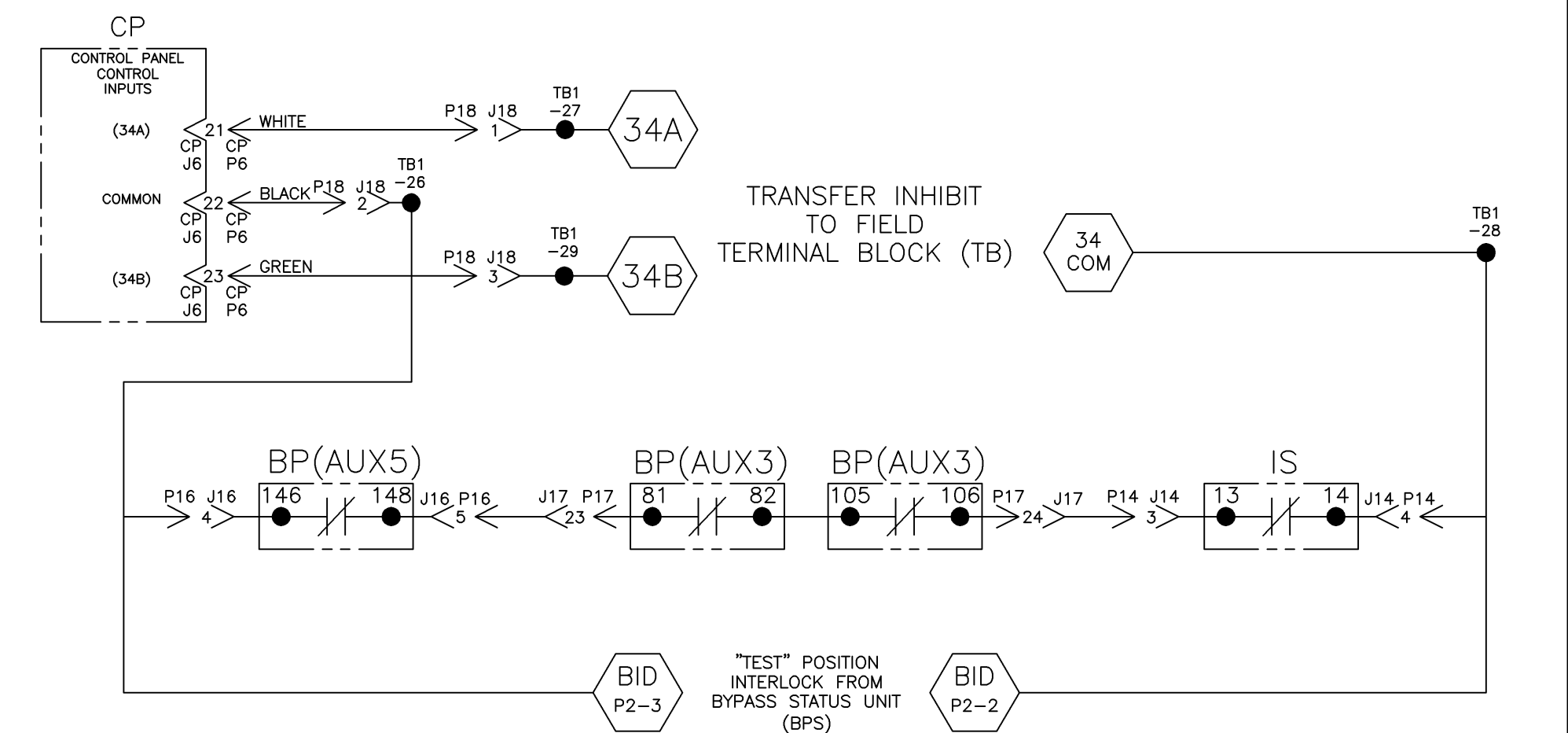
CONTROL SIGNALS & INDICATION



ENGINE START CIRCUIT



CONTROL PANEL/BYPASS-ISOLATION INTERLOCKS



PROJECT NAME:		E 210450 BWM BK 10/24/06	
DRAWN BY: MM		DATE: 09/11/03	
CHECKED BY: BK		DATE: 09/11/03	
DRAFTING APPROVAL BY: BK		DATE: 09/11/03	
FINAL APPROVAL			
WIRING DIAGRAM		7000 SERIES (H7ADTB) "H" FRAME, GROUP 5 CONTROLS	
MANUFACTURING TOLERANCES TO BE IN ACCORDANCE WITH ASCO PROCEDURE MP-1-003. FOR PLASTIC PARTS SEE MP-1-005.		ASSEMBLY REF. NO.	
PROPERTY OF ASCO POWER TECHNOLOGIES. USE PERMITTED FOR OUR WORK ONLY. ALL RIGHTS OF DESIGN OR INVENTION ARE RESERVED.		SCALE: 1:1 ACAD FILE	
ASCO POWER TECHNOLOGIES, L.P. FLORHAM PARK, NEW JERSEY 07932 U.S.A.		SIZE: 11x17 DWG. NO. DS747352	
CHANGE LETTER		E 210450	
BY: [ ]		DATE: [ ]	
APP: [ ]		DATE: [ ]	
AC: [ ]		DATE: [ ]	
AS: [ ]		DATE: [ ]	
AL: [ ]		DATE: [ ]	
AR: [ ]		DATE: [ ]	
PS: [ ]		DATE: [ ]	
AA: [ ]		DATE: [ ]	
AM: [ ]		DATE: [ ]	
AN: [ ]		DATE: [ ]	
AG: [ ]		DATE: [ ]	
AP: [ ]		DATE: [ ]	
AV: [ ]		DATE: [ ]	
AW: [ ]		DATE: [ ]	
AX: [ ]		DATE: [ ]	
AY: [ ]		DATE: [ ]	
AZ: [ ]		DATE: [ ]	

ADDITIONAL CIRCUITS



D

D

C

C

B

B

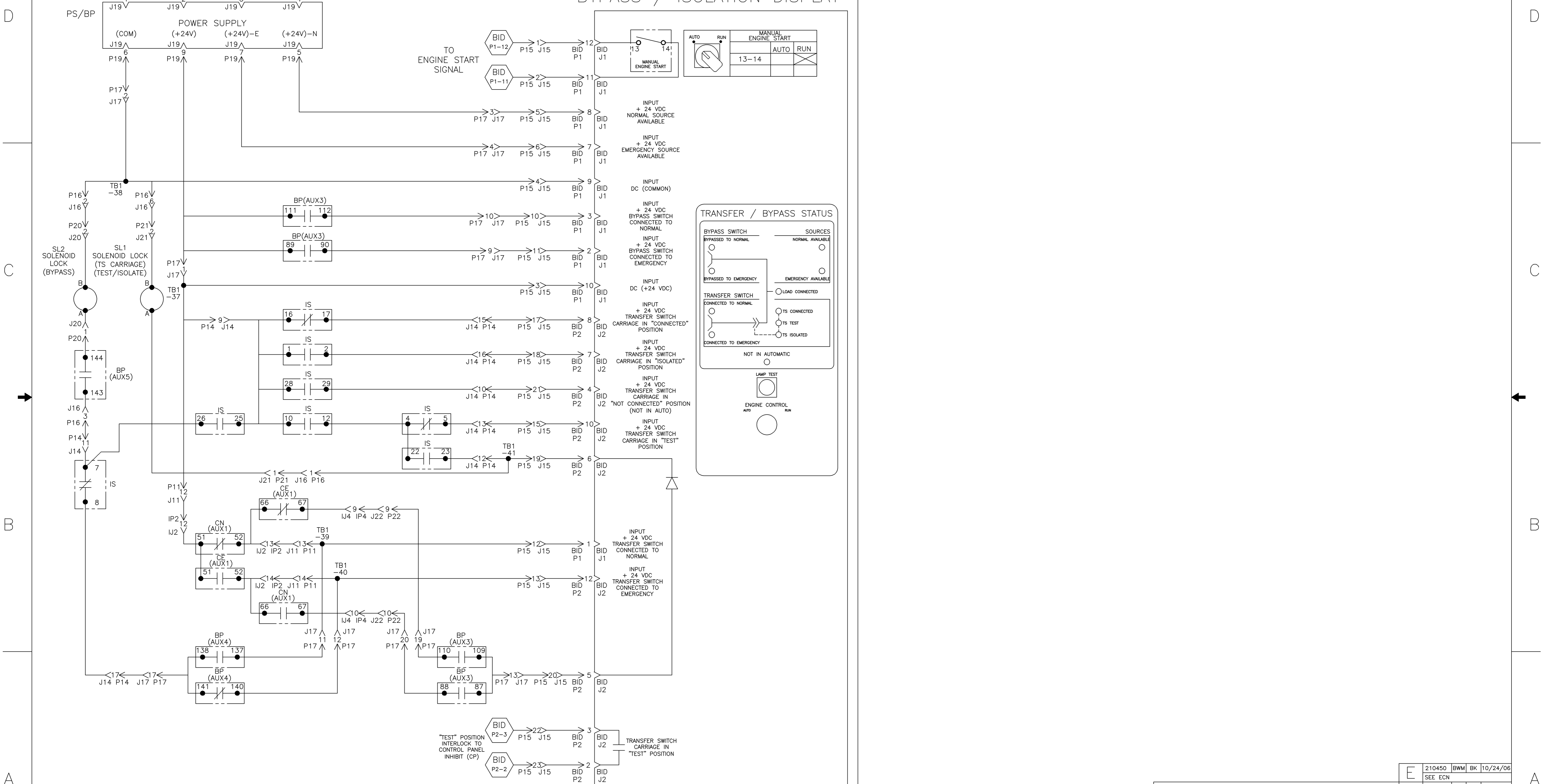
A

A

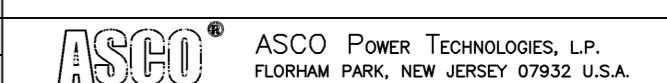
PROJECT NAME:		E 210450 BWM BK 10/24/06	
WIRING DIAGRAM		SEE ECN	
7000 SERIES (H7ADTB)		SUBSIDIARY DISTRIBUTION	
"H" FRAME, GROUP 5 CONTROLS		THIRD ANGLE PROJECTION	
CHANGE LETTER	ECN NO.	BY	APP.
AE	AN	AM	AJ
CH	AV	AA	PS
AG	AP	AC	AS
AL	AR		
AS			
DRAWN BY MM 09/11/03		MANUFACTURING TOLERANCES TO BE IN ACCORDANCE WITH ASCO PROCEDURE MP-I-003. FOR PLASTIC PARTS SEE MP-I-055	
CHECKED BK 09/11/03		PROPERTY OF ASCO POWER TECHNOLOGIES. USE PERMITTED FOR OUR WORK ONLY. ALL RIGHTS OF DESIGN OR INVENTION ARE RESERVED.	
DRAFTING APPROVAL BK 09/11/03		ASSEM. REF. NO.	
FINAL APPROVAL		COMPUTER GENERATED DRAWING	
ASCO		SCALE 1:1 ACAD FILE	
ASCO POWER TECHNOLOGIES, L.P. FLORHAM PARK, NEW JERSEY 07932 U.S.A.		SIZE DWG. NO. DS 747352	
CHANGE LETTER E		ECN NO. 210450	
		SHEET 6 OF 10	

BYPASS / ISOLATION INTERLOCKING & INDICATION

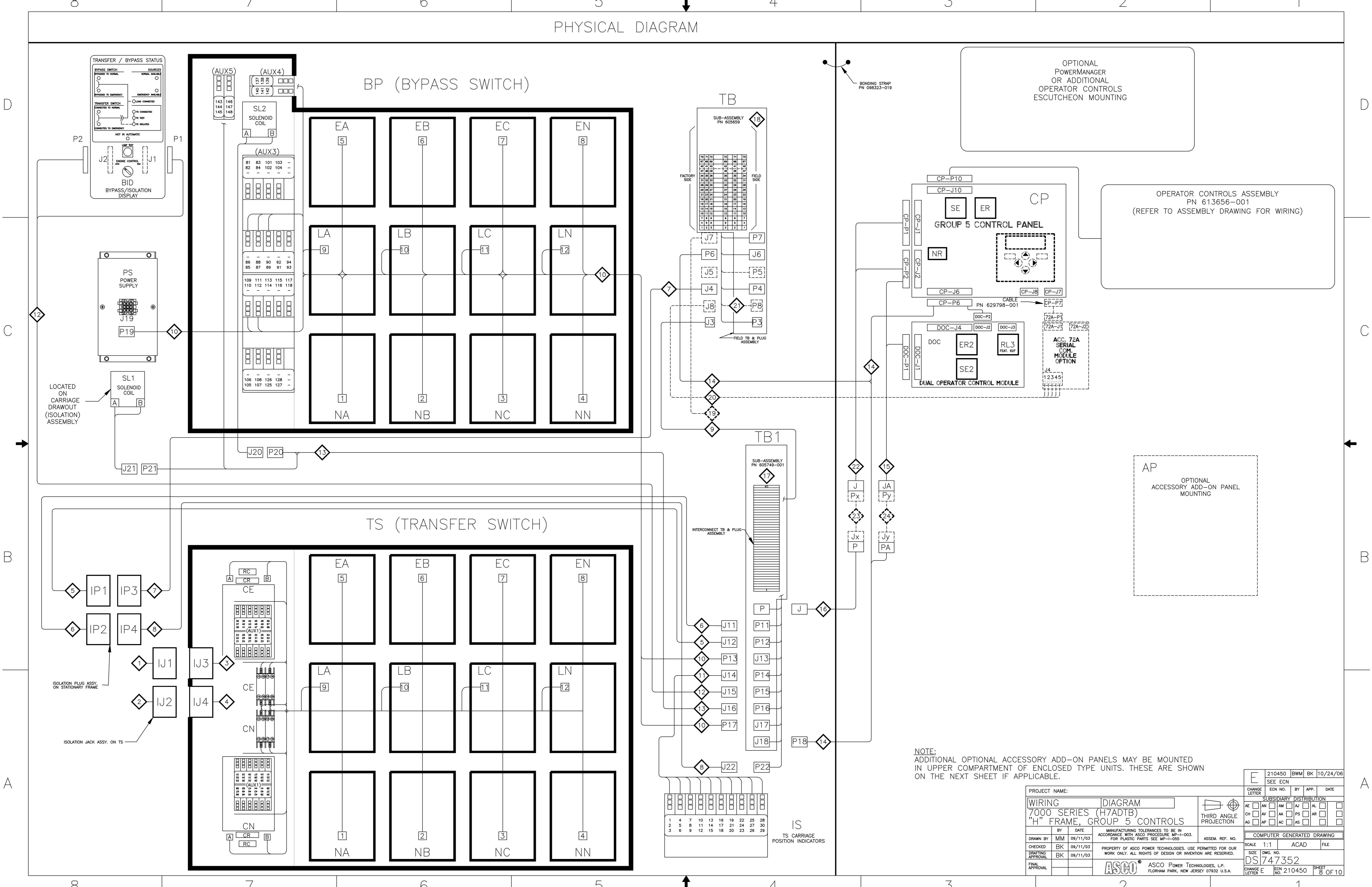
BID  
BYPASS / ISOLATION DISPLAY



PROJECT NAME:		E 210450 BWM BK 10/24/06	
DRAWING		SEE ECN	
7000 SERIES (H7ADTB)		SUBSIDIARY DISTRIBUTION	
"H" FRAME, GROUP 5 CONTROLS		THIRD ANGLE PROJECTION	
BY	DATE	MANUFACTURING TOLERANCES TO BE IN ACCORDANCE WITH ASCO PROCEDURE MP-I-003. FOR PLASTIC PARTS SEE MP-I-005.	ASSEM. REF. NO.
MM	09/11/03	PROPERTY OF ASCO POWER TECHNOLOGIES. USE PERMITTED FOR OUR WORK ONLY. ALL RIGHTS OF DESIGN OR INVENTION ARE RESERVED.	COMPUTER GENERATED DRAWING
CHECKED	BK	09/11/03	SCALE 1:1 ACAD FILE
DRAWING APPROVAL	BK	09/11/03	SIZE DWG. NO. DS747352
FINAL APPROVAL			CHANGE LETTER ECN NO. 210450 SHEET 7 OF 10



PHYSICAL DIAGRAM



NOTE:  
ADDITIONAL OPTIONAL ACCESSORY ADD-ON PANELS MAY BE MOUNTED  
IN UPPER COMPARTMENT OF ENCLOSED TYPE UNITS. THESE ARE SHOWN  
ON THE NEXT SHEET IF APPLICABLE.

PROJECT NAME:		E 210450 BWM BK 10/24/06	
WIRING DIAGRAM		SEE ECN	
7000 SERIES (H7ADTB)		SUBSIDIARY DISTRIBUTION	
"H" FRAME, GROUP 5 CONTROLS		AE <input type="checkbox"/> AN <input type="checkbox"/> AM <input type="checkbox"/> AJ <input type="checkbox"/> AL <input type="checkbox"/> CH <input type="checkbox"/> AV <input type="checkbox"/> AA <input type="checkbox"/> PS <input type="checkbox"/> AR <input type="checkbox"/> AG <input type="checkbox"/> AP <input type="checkbox"/> AC <input type="checkbox"/> AS <input type="checkbox"/>	
DRAWN BY: MM CHECKED: BK DRAFTING APPROVAL: BK DATE: 09/11/03 DATE: 09/11/03 DATE: 09/11/03	MANUFACTURING TOLERANCES TO BE IN ACCORDANCE WITH ASCO PROCEDURE MP-I-003. FOR PLASTIC PARTS SEE MP-I-005. PROPERTY OF ASCO POWER TECHNOLOGIES. USE PERMITTED FOR OUR WORK ONLY. ALL RIGHTS OF DESIGN OR INVENTION ARE RESERVED.	ASSEM. REF. NO. COMPUTER GENERATED DRAWING SCALE: 1:1 ACAD FILE SIZE: DWG. NO. DS747352 CHANGE LETTER: E ECN NO.: 210450 SHEET NO.: 8 OF 10	THIRD ANGLE PROJECTION ASCO POWER TECHNOLOGIES, L.P. FLOHAM PARK, NEW JERSEY 07932 U.S.A.

WIRE RUN LISTING

HARNESS LOCATOR 605674-001 (J1) TS. WIRE No. 1 U1-1,J1-2; 2 U1-3,J1-4; 3 U1-5,J1-6; 4 U1-7,J1-8; 5 U1-9,J1-10; 6 U1-11,J1-12; 7 U1-13,J1-14; 8 U1-15,J1-16; 9 U1-17,J1-18; 10 U1-19,J1-20; 11 U1-21,J1-22; 12 U1-23,J1-24.

HARNESS LOCATOR 736828-003-A (J4) TS. WIRE No. 228 J4-1,CE-CR-AC1; 229 J4-2,CE-CR-AC2; 320 J4-3,CE-14; 322 J4-4,CE-18; 321 J4-5,CE-16; 323 J4-6,CE-20; 324 J4-7,CE(AUX1)-22; 325 J4-8,CE(AUX1)-49; 32 J4-9,CE(AUX1)-67; 33 J4-10,CN(AUX1)-67.

HARNESS LOCATOR 605674-006 (IP3,J4) STATIONARY FRAME. WIRE No. 50 IP3-1,J4-1; 51 IP3-2,J4-2; 52 IP3-3,J4-3; 53 IP3-4,J4-4; 54 IP3-5,J4-5; 55 IP3-6,J4-6; 56 IP3-7,J4-7; 57 IP3-8,J4-8; 58 IP3-9,J4-9; 59 IP3-10,J4-10; 60 IP3-11,J4-11; 61 IP3-12,J4-12; 62 IP3-13,J4-13; 63 IP3-14,J4-14; 64 IP3-15,J4-15; 65 IP3-16,J4-16; 66 IP3-17,J4-17; 120 IP3-18,J4-18; 68 IP3-19,J4-19; 69 IP3-20,J4-20; 70 IP3-21,J4-21; 177 IP3-22,J4-22; 71 IP3-23,J4-23; 73 IP3-24,J4-24.

HARNESS LOCATOR 736828-003 (P13, P17, P19, BP) BP. WIRE No. 1 P13-1,BP-1; 2 BP-1,P19-1; 1 P13-2,BP-2; 3 P13-3,JP-3; 4 P13-4,JP-4; 5 P13-5,JP-5; 6 P13-6,JP-6; 7 P13-7,JP-7; 8 P13-8,JP-8; 9 P13-9,JP-9; 10 P13-10,JP-10; 11 P13-11,JP-11; 12 P13-12,JP-12; 31 P17-1,BP(AUX3)-111; 170 P17-2,JP-6; 171 P17-3,JP-5; 172 P17-4,JP-7; 177 P17-9,BP(AUX3)-90; 176 P17-10,BP(AUX3)-112; 32 P17-11,BP(AUX3)-110; 32 BP(AUX3)-110,BP(AUX4)-137; 33 P17-12,BP(AUX3)-88; 33 BP(AUX3)-88,BP(AUX4)-140; 149 P17-13,BP(AUX3)-87; 149 BP(AUX3)-87,BP(AUX3)-109; 190 P17-17,BP(AUX4)-138; 190 BP(AUX4)-138,BP(AUX4)-141; 121 P17-21,BP(AUX3)-85; 120 P17-22,BP(AUX3)-86; 31 P19-9,BP(AUX3)-89; 31 BP(AUX3)-89,BP(AUX3)-111; 150 BP(AUX3)-82,BP(AUX3)-105; 150 P17-23,BP(AUX3)-81; 150 P17-24,BP(AUX3)-106.

HARNESS LOCATOR 736883 (J15, BID-P1, BID-P2) BYPASS ISOLATION DISPLAY. WIRE No. 121 J15-1,BID-P1-12; 120 J15-2,BID-P1-11; 31 J15-3,BID-P1-10; 170 J15-4,BID-P1-9; 171 J15-5,BID-P1-8; 172 J15-6,BID-P1-7; 389 J15-7; 390 J15-8; 391 J15-9; 176 J15-10,BID-P1-3; 177 J15-11,BID-P1-2; 32 J15-12,BID-P1-1; 33 J15-13,BID-P2-12; 395 J15-14; 155 J15-15,BID-P2-10; 156 J15-16; 157 J15-17,BID-P2-8; 158 J15-18,BID-P2-7; 154 J15-19,BID-P2-6; 149 J15-20,BID-P2-5; 152 J15-21,BID-P2-4; 191 J15-22,BID-P2-3; 151 J15-23,BID-P2-2; 405 J15-24.

HARNESS LOCATOR 619385 (JACP-P2,DOC-P1) DOC. WIRE No. 228 JA-2,DOC-P1-15; 320 JA-3,DOC-P1-2; 322 JA-1,DOC-P1-8; 323 JA-16,DOC-P1-13; 321 JA-15,DOC-P1-5; 229 JA-5,DOC-P1-17; 324 JA-13,CP-P2-6; 325 JA-14,CP-P2-7.

HARNESS LOCATOR 736828-001-A (J2) TS. WIRE No. 1 U2-1,CN-13; 2 CN-13,CE-13; 21 U2-2,CN-14; 3 U2-3,CN-15; 3 CN-15,CE-15; 5 U2-4,CN-17; 5 CN-17,CE-17; 24 U2-5,CN-20; 7 U2-6,CN-19; 7 CN-19,CE-19; 14 U2-7,CN-CR-AC1; 15 U2-8,CN-CR-AC2; 28 U2-9,CN(AUX1)-48; 28 CN(AUX1)-48,CN(AUX1)-21; 28 CE(AUX1)-48,CE(AUX1)-21; 30 U2-10,CN(AUX1)-49; 29 U2-11,CN(AUX1)-22; 31 U2-12,CN(AUX1)-51; 31 CN(AUX1)-51,CE(AUX1)-51; 32 U2-13,CN(AUX1)-52; 32 CN(AUX1)-52,CE(AUX1)-66; 33 U2-14,CN(AUX1)-66; 33 CN(AUX1)-66,CE(AUX1)-52; 35 U2-16,CN(AUX1)-47; 36 U2-17,CE(AUX1)-47; 120 U2-18,CE(AUX1)-24; 38 U2-19,CE(AUX1)-25; 39 U2-20,CN-18; 40 U2-21,CN-16; 319 CN(AUX1)-45,CE(AUX1)-45.

HARNESS LOCATOR 605674-006-A (IP1,J12) STATIONARY FRAME. WIRE No. 1 IP1-1,J12-1; 1 IP1-2,J12-2; 2 IP1-3,J12-3; 2 IP1-4,J12-4; 3 IP1-5,J12-5; 3 IP1-6,J12-6; 4 IP1-7,J12-7; 4 IP1-8,J12-8; 5 IP1-9,J12-9; 5 IP1-10,J12-10; 6 IP1-11,J12-11; 6 IP1-12,J12-12; 7 IP1-13,J12-13; 7 IP1-14,J12-14; 8 IP1-15,J12-15; 8 IP1-16,J12-16; 9 IP1-17,J12-17; 9 IP1-18,J12-18; 10 IP1-19,J12-19; 10 IP1-20,J12-20; 11 IP1-21,J12-21; 11 IP1-22,J12-22; 12 IP1-23,J12-23; 12 IP1-24,J12-24.

HARNESS LOCATOR 605674-006-B (IP4,J22) STATIONARY FRAME. WIRE No. 228 IP4-1,J22-1; 229 IP4-2,J22-2; 320 IP4-3,J22-3; 322 IP4-4,J22-4; 321 IP4-5,J22-5; 323 IP4-6,J22-6; 324 IP4-7,J22-7; 325 IP4-8,J22-8; 32 IP4-9,J22-9; 33 IP4-10,J22-10.

HARNESS LOCATOR 736828-005 (J16, P20, P21) BP/IS INTERLOCKS. WIRE No. 154 J16-1,P21-1; 170 J16-2,P20-2; 153 J16-3,BP(AUX5)-143; 191 J16-4,BP(AUX5)-146; 32 J16-5,BP(AUX5)-148; 170 J16-6,P21-2; 192 BP(AUX5)-144,P20-1.

HARNESS LOCATOR 736828-004-A (PA,P6,P18,CP-P6,DOC-P2,TFR) INTERNAL CONTROL & FIELD INPUTS. WIRE No. 210 P18-1,CP-P6-21; 191 P18-2,CP-P6-22; 211 P18-3,CP-P6-23; 210 P18-4,P6-1; 151 P18-5,P6-2; 211 P18-6,P6-3; 324 P18-15,PA-13; 325 P18-16,PA-14; 36 P18-17,PA-17; 35 P18-18,PA-18; 228 P18-19,PA-2; 229 P18-20,PA-5; 320 P18-21,PA-3; 322 P18-22,PA-1; 321 P18-23,PA-15; 323 P18-24,PA-16; 243 P6-4,CP-P6-9; 244 P6-5,CP-P6-10; 313 CP-P6-42,DOC-P2-1; 314 CP-P6-44,DOC-P2-2; 315 CP-P6-43,DOC-P2-3; 316 CP-P6-24,DOC-P2-6; 318 CP-P6-40,TFR-A; 317 CP-P6-41,TFR-B.

HARNESS LOCATOR 309320-006 (P,J) CONTROL PANEL EXTENSION. WIRE No. 310 P-1,J-1; 1 P-2,J-2; 21 P-3,J-3; 3 P-4,J-4; 5 P-5,J-5; 7 P-6,J-6; 5 P-7,J-7; 120 P-8,J-8; 38 P-9,J-9; 28 P-10,J-10; 2 P-11,J-11; 11 P-12,J-12; 30 P-13,J-13; 29 P-14,J-14; 28 P-15,J-15; 24 P-16,J-16; 312 P-17,J-17; 6 P-18,J-18; 9 P-19,J-19; 10 P-20,J-20; 11 P-21,J-21; 4 P-22,J-22; 8 P-23,J-23; 12 P-24,J-24.

HARNESS LOCATOR 736828-002-A (J3) TS. WIRE No. 50 UJ3-1,CN(AUX1)-27; 50 CN(AUX1)-27,CE(AUX1)-27; 51 UJ3-2,CE(AUX1)-28; 52 UJ3-3,CN(AUX1)-28; 53 UJ3-4,CN(AUX1)-30; 53 CN(AUX1)-30,CE(AUX1)-30; 54 UJ3-5,CE(AUX1)-31; 55 UJ3-6,CN(AUX1)-31; 56 UJ3-7,CN(AUX1)-33; 56 CN(AUX1)-33,CE(AUX1)-33; 57 UJ3-8,CE(AUX1)-34; 58 UJ3-9,CN(AUX1)-34; 59 UJ3-10,CN(AUX1)-36; 59 CN(AUX1)-36,CE(AUX1)-36; 60 UJ3-11,CN(AUX1)-38; 61 UJ3-12,CE(AUX1)-38; 62 UJ3-13,CN(AUX1)-39; 62 CN(AUX1)-39,CE(AUX1)-39; 63 UJ3-14,CN(AUX1)-41; 64 UJ3-15,CE(AUX1)-41; 65 UJ3-16,CN(AUX1)-42; 65 CN(AUX1)-42,CE(AUX1)-42; 66 UJ3-17,CN(AUX1)-44; 67 UJ3-18,CE(AUX1)-44.

HARNESS LOCATOR 605674-006-A (IP2,J11) STATIONARY FRAME. WIRE No. 1 IP2-1,J11-1; 21 IP2-2,J11-2; 3 IP2-3,J11-3; 5 IP2-4,J11-4; 24 IP2-5,J11-5; 7 IP2-6,J11-6; 14 IP2-7,J11-7; 15 IP2-8,J11-8; 28 IP2-9,J11-9; 30 IP2-10,J11-10; 29 IP2-11,J11-11; 31 IP2-12,J11-12; 32 IP2-13,J11-13; 33 IP2-14,J11-14; 34 IP2-15,J11-15; 35 IP2-16,J11-16; 36 IP2-17,J11-17; 120 IP2-18,J11-18; 38 IP2-19,J11-19; 39 IP2-20,J11-20; 40 IP2-21,J11-21; 41 IP2-22,J11-22; 42 IP2-23,J11-23; 43 IP2-24,J11-24.

HARNESS LOCATOR 605674-007-A (J3,TB1) ENGINE START. WIRE No. 120 J3-1,TB1-33; 121 J3-2,TB1-32; 122 J3-3; 123 J3-4.

HARNESS LOCATOR 736828-006 (J14,IS) ISOLATION AUX. CONTACTS. WIRE No. 150 J14-3,IS-13; 151 J14-4,IS-14; 33 J14-5,IS-19; 121 J14-6,IS-21; 31 J14-9,IS-10; 152 J14-10,IS-29; 153 J14-11,IS-26; 154 J14-12,IS-23; 155 J14-13,IS-5; 157 J14-15,IS-17; 158 J14-16,IS-2; 190 J14-17,IS-8; 31 IS-10,IS-1; 31 IS-1,IS-16; 31 IS-16,IS-25; 31 IS-25,IS-28; 159 IS-12,IS-22; 159 IS-12,IS-4; 153 IS-7,IS-26.

HARNESS LOCATOR 736828-004-A (PA,P6,P18,CP-P6,DOC-P2,TFR) INTERNAL CONTROL & FIELD INPUTS. WIRE No. 210 P18-1,CP-P6-21; 191 P18-2,CP-P6-22; 211 P18-3,CP-P6-23; 210 P18-4,P6-1; 151 P18-5,P6-2; 211 P18-6,P6-3; 324 P18-15,PA-13; 325 P18-16,PA-14; 36 P18-17,PA-17; 35 P18-18,PA-18; 228 P18-19,PA-2; 229 P18-20,PA-5; 320 P18-21,PA-3; 322 P18-22,PA-1; 321 P18-23,PA-15; 323 P18-24,PA-16; 243 P6-4,CP-P6-9; 244 P6-5,CP-P6-10; 313 CP-P6-42,DOC-P2-1; 314 CP-P6-44,DOC-P2-2; 315 CP-P6-43,DOC-P2-3; 316 CP-P6-24,DOC-P2-6; 318 CP-P6-40,TFR-A; 317 CP-P6-41,TFR-B.

HARNESS LOCATOR 309320-006 (P,J) CONTROL PANEL EXTENSION. WIRE No. 310 P-1,J-1; 1 P-2,J-2; 21 P-3,J-3; 3 P-4,J-4; 5 P-5,J-5; 7 P-6,J-6; 5 P-7,J-7; 120 P-8,J-8; 38 P-9,J-9; 28 P-10,J-10; 2 P-11,J-11; 11 P-12,J-12; 30 P-13,J-13; 29 P-14,J-14; 28 P-15,J-15; 24 P-16,J-16; 312 P-17,J-17; 6 P-18,J-18; 9 P-19,J-19; 10 P-20,J-20; 11 P-21,J-21; 4 P-22,J-22; 8 P-23,J-23; 12 P-24,J-24.

HARNESS LOCATOR 736828-002-A (J3) TS. WIRE No. 50 UJ3-1,CN(AUX1)-27; 50 CN(AUX1)-27,CE(AUX1)-27; 51 UJ3-2,CE(AUX1)-28; 52 UJ3-3,CN(AUX1)-28; 53 UJ3-4,CN(AUX1)-30; 53 CN(AUX1)-30,CE(AUX1)-30; 54 UJ3-5,CE(AUX1)-31; 55 UJ3-6,CN(AUX1)-31; 56 UJ3-7,CN(AUX1)-33; 56 CN(AUX1)-33,CE(AUX1)-33; 57 UJ3-8,CE(AUX1)-34; 58 UJ3-9,CN(AUX1)-34; 59 UJ3-10,CN(AUX1)-36; 59 CN(AUX1)-36,CE(AUX1)-36; 60 UJ3-11,CN(AUX1)-38; 61 UJ3-12,CE(AUX1)-38; 62 UJ3-13,CN(AUX1)-39; 62 CN(AUX1)-39,CE(AUX1)-39; 63 UJ3-14,CN(AUX1)-41; 64 UJ3-15,CE(AUX1)-41; 65 UJ3-16,CN(AUX1)-42; 65 CN(AUX1)-42,CE(AUX1)-42; 66 UJ3-17,CN(AUX1)-44; 67 UJ3-18,CE(AUX1)-44.

HARNESS LOCATOR 605674-006-A (IP2,J11) STATIONARY FRAME. WIRE No. 1 IP2-1,J11-1; 21 IP2-2,J11-2; 3 IP2-3,J11-3; 5 IP2-4,J11-4; 24 IP2-5,J11-5; 7 IP2-6,J11-6; 14 IP2-7,J11-7; 15 IP2-8,J11-8; 28 IP2-9,J11-9; 30 IP2-10,J11-10; 29 IP2-11,J11-11; 31 IP2-12,J11-12; 32 IP2-13,J11-13; 33 IP2-14,J11-14; 34 IP2-15,J11-15; 35 IP2-16,J11-16; 36 IP2-17,J11-17; 120 IP2-18,J11-18; 38 IP2-19,J11-19; 39 IP2-20,J11-20; 40 IP2-21,J11-21; 41 IP2-22,J11-22; 42 IP2-23,J11-23; 43 IP2-24,J11-24.

HARNESS LOCATOR 605674-007-A (J3,TB1) ENGINE START. WIRE No. 120 J3-1,TB1-33; 121 J3-2,TB1-32; 122 J3-3; 123 J3-4.

HARNESS LOCATOR 736828-006 (J14,IS) ISOLATION AUX. CONTACTS. WIRE No. 150 J14-3,IS-13; 151 J14-4,IS-14; 33 J14-5,IS-19; 121 J14-6,IS-21; 31 J14-9,IS-10; 152 J14-10,IS-29; 153 J14-11,IS-26; 154 J14-12,IS-23; 155 J14-13,IS-5; 157 J14-15,IS-17; 158 J14-16,IS-2; 190 J14-17,IS-8; 31 IS-10,IS-1; 31 IS-1,IS-16; 31 IS-16,IS-25; 31 IS-25,IS-28; 159 IS-12,IS-22; 159 IS-12,IS-4; 153 IS-7,IS-26.

HARNESS LOCATOR 736828-004-A (PA,P6,P18,CP-P6,DOC-P2,TFR) INTERNAL CONTROL & FIELD INPUTS. WIRE No. 210 P18-1,CP-P6-21; 191 P18-2,CP-P6-22; 211 P18-3,CP-P6-23; 210 P18-4,P6-1; 151 P18-5,P6-2; 211 P18-6,P6-3; 324 P18-15,PA-13; 325 P18-16,PA-14; 36 P18-17,PA-17; 35 P18-18,PA-18; 228 P18-19,PA-2; 229 P18-20,PA-5; 320 P18-21,PA-3; 322 P18-22,PA-1; 321 P18-23,PA-15; 323 P18-24,PA-16; 243 P6-4,CP-P6-9; 244 P6-5,CP-P6-10; 313 CP-P6-42,DOC-P2-1; 314 CP-P6-44,DOC-P2-2; 315 CP-P6-43,DOC-P2-3; 316 CP-P6-24,DOC-P2-6; 318 CP-P6-40,TFR-A; 317 CP-P6-41,TFR-B.

HARNESS LOCATOR 309320-006 (P,J) CONTROL PANEL EXTENSION. WIRE No. 310 P-1,J-1; 1 P-2,J-2; 21 P-3,J-3; 3 P-4,J-4; 5 P-5,J-5; 7 P-6,J-6; 5 P-7,J-7; 120 P-8,J-8; 38 P-9,J-9; 28 P-10,J-10; 2 P-11,J-11; 11 P-12,J-12; 30 P-13,J-13; 29 P-14,J-14; 28 P-15,J-15; 24 P-16,J-16; 312 P-17,J-17; 6 P-18,J-18; 9 P-19,J-19; 10 P-20,J-20; 11 P-21,J-21; 4 P-22,J-22; 8 P-23,J-23; 12 P-24,J-24.

HARNESS LOCATOR 736828-002-A (J3) TS. WIRE No. 50 UJ3-1,CN(AUX1)-27; 50 CN(AUX1)-27,CE(AUX1)-27; 51 UJ3-2,CE(AUX1)-28; 52 UJ3-3,CN(AUX1)-28; 53 UJ3-4,CN(AUX1)-30; 53 CN(AUX1)-30,CE(AUX1)-30; 54 UJ3-5,CE(AUX1)-31; 55 UJ3-6,CN(AUX1)-31; 56 UJ3-7,CN(AUX1)-33; 56 CN(AUX1)-33,CE(AUX1)-33; 57 UJ3-8,CE(AUX1)-34; 58 UJ3-9,CN(AUX1)-34; 59 UJ3-10,CN(AUX1)-36; 59 CN(AUX1)-36,CE(AUX1)-36; 60 UJ3-11,CN(AUX1)-38; 61 UJ3-12,CE(AUX1)-38; 62 UJ3-13,CN(AUX1)-39; 62 CN(AUX1)-39,CE(AUX1)-39; 63 UJ3-14,CN(AUX1)-41; 64 UJ3-15,CE(AUX1)-41; 65 UJ3-16,CN(AUX1)-42; 65 CN(AUX1)-42,CE(AUX1)-42; 66 UJ3-17,CN(AUX1)-44; 67 UJ3-18,CE(AUX1)-44.

HARNESS LOCATOR 605674-006-A (IP2,J11) STATIONARY FRAME. WIRE No. 1 IP2-1,J11-1; 21 IP2-2,J11-2; 3 IP2-3,J11-3; 5 IP2-4,J11-4; 24 IP2-5,J11-5; 7 IP2-6,J11-6; 14 IP2-7,J11-7; 15 IP2-8,J11-8; 28 IP2-9,J11-9; 30 IP2-10,J11-10; 29 IP2-11,J11-11; 31 IP2-12,J11-12; 32 IP2-13,J11-13; 33 IP2-14,J11-14; 34 IP2-15,J11-15; 35 IP2-16,J11-16; 36 IP2-17,J11-17; 120 IP2-18,J11-18; 38 IP2-19,J11-19; 39 IP2-20,J11-20; 40 IP2-21,J11-21; 41 IP2-22,J11-22; 42 IP2-23,J11-23; 43 IP2-24,J11-24.

HARNESS LOCATOR 605674-007-A (J3,TB1) ENGINE START. WIRE No. 120 J3-1,TB1-33; 121 J3-2,TB1-32; 122 J3-3; 123 J3-4.

HARNESS LOCATOR 736828-006 (J14,IS) ISOLATION AUX. CONTACTS. WIRE No. 150 J14-3,IS-13; 151 J14-4,IS-14; 33 J14-5,IS-19; 121 J14-6,IS-21; 31 J14-9,IS-10; 152 J14-10,IS-29; 153 J14-11,IS-26; 154 J14-12,IS-23; 155 J14-13,IS-5; 157 J14-15,IS-17; 158 J14-16,IS-2; 190 J14-17,IS-8; 31 IS-10,IS-1; 31 IS-1,IS-16; 31 IS-16,IS-25; 31 IS-25,IS-28; 159 IS-12,IS-22; 159 IS-12,IS-4; 153 IS-7,IS-26.

HARNESS LOCATOR 736828-004-A (PA,P6,P18,CP-P6,DOC-P2,TFR) INTERNAL CONTROL & FIELD INPUTS. WIRE No. 210 P18-1,CP-P6-21; 191 P18-2,CP-P6-22; 211 P18-3,CP-P6-23; 210 P18-4,P6-1; 151 P18-5,P6-2; 211 P18-6,P6-3; 324 P18-15,PA-13; 325 P18-16,PA-14; 36 P18-17,PA-17; 35 P18-18,PA-18; 228 P18-19,PA-2; 229 P18-20,PA-5; 320 P18-21,PA-3; 322 P18-22,PA-1; 321 P18-23,PA-15; 323 P18-24,PA-16; 243 P6-4,CP-P6-9; 244 P6-5,CP-P6-10; 313 CP-P6-42,DOC-P2-1; 314 CP-P6-44,DOC-P2-2; 315 CP-P6-43,DOC-P2-3; 316 CP-P6-24,DOC-P2-6; 318 CP-P6-40,TFR-A; 317 CP-P6-41,TFR-B.

HARNESS LOCATOR 309320-006 (P,J) CONTROL PANEL EXTENSION. WIRE No. 310 P-1,J-1; 1 P-2,J-2; 21 P-3,J-3; 3 P-4,J-4; 5 P-5,J-5; 7 P-6,J-6; 5 P-7,J-7; 120 P-8,J-8; 38 P-9,J-9; 28 P-10,J-10; 2 P-11,J-11; 11 P-12,J-12; 30 P-13,J-13; 29 P-14,J-14; 28 P-15,J-15; 24 P-16,J-16; 312 P-17,J-17; 6 P-18,J-18; 9 P-19,J-19; 10 P-20,J-20; 11 P-21,J-21; 4 P-22,J-22; 8 P-23,J-23; 12 P-24,J-24.

HARNESS LOCATOR 736828-002-A (J3) TS. WIRE No. 50 UJ3-1,CN(AUX1)-27; 50 CN(AUX1)-27,CE(AUX1)-27; 51 UJ3-2,CE(AUX1)-28; 52 UJ3-3,CN(AUX1)-28; 53 UJ3-4,CN(AUX1)-30; 53 CN(AUX1)-30,CE(AUX1)-30; 54 UJ3-5,CE(AUX1)-31; 55 UJ3-6,CN(AUX1)-31; 56 UJ3-7,CN(AUX1)-33; 56 CN(AUX1)-33,CE(AUX1)-33; 57 UJ3-8,CE(AUX1)-34; 58 UJ3-9,CN(AUX1)-34; 59 UJ3-10,CN(AUX1)-36; 59 CN(AUX1)-36,CE(AUX1)-36; 60 UJ3-11,CN(AUX1)-38; 61 UJ3-12,CE(AUX1)-38; 62 UJ3-13,CN(AUX1)-39; 62 CN(AUX1)-39,CE(AUX1)-39; 63 UJ3-14,CN(AUX1)-41; 64 UJ3-15,CE(AUX1)-41; 65 UJ3-16,CN(AUX1)-42; 65 CN(AUX1)-42,CE(AUX1)-42; 66 UJ3-17,CN(AUX1)-44; 67 UJ3-18,CE(AUX1)-44.

HARNESS LOCATOR 605674-006-A (IP2,J11) STATIONARY FRAME. WIRE No. 1 IP2-1,J11-1; 21 IP2-2,J11-2; 3 IP2-3,J11-3; 5 IP2-4,J11-4; 24 IP2-5,J11-5; 7 IP2-6,J11-6; 14 IP2-7,J11-7; 15 IP2-8,J11-8; 28 IP2-9,J11-9; 30 IP2-10,J11-10; 29 IP2-11,J11-11; 31 IP2-12,J11-12; 32 IP2-13,J11-13; 33 IP2-14,J11-14; 34 IP2-15,J11-15; 35 IP2-16,J11-16; 36 IP2-17,J11-17; 120 IP2-18,J11-18; 38 IP2-19,J11-19; 39 IP2-20,J11-20; 40 IP2-21,J11-21; 41 IP2-22,J11-22; 42 IP2-23,J11-23; 43 IP2-24,J11-24.

HARNESS LOCATOR 605674-007-A (J3,TB1) ENGINE START. WIRE No. 120 J3-1,TB1-33; 121 J3-2,TB1-32; 122 J3-3; 123 J3-4.

HARNESS LOCATOR 736828-006 (J14,IS) ISOLATION AUX. CONTACTS. WIRE No. 150 J14-3,IS-13; 151 J14-4,IS-14; 33 J14-5,IS-19; 121 J14-6,IS-21; 31 J14-9,IS-10; 152 J14-10,IS-29; 153 J14-11,IS-26; 154 J14-12,IS-23; 155 J14-13,IS-5; 157 J14-15,IS-17; 158 J14-16,IS-2; 190 J14-17,IS-8; 31 IS-10,IS-1; 31 IS-1,IS-16; 31 IS-16,IS-25; 31 IS-25,IS-28; 159 IS-12,IS-22; 159 IS-12,IS-4; 153 IS-7,IS-26.

HARNESS LOCATOR 736828-004-A (PA,P6,P18,CP-P6,DOC-P2,TFR) INTERNAL CONTROL & FIELD INPUTS. WIRE No. 210 P18-1,CP-P6-21; 191 P18-2,CP-P6-22; 211 P18-3,CP-P6-23; 210 P18-4,P6-1; 151 P18-5,P6-2; 211 P18-6,P6-3; 324 P18-15,PA-13; 325 P18-16,PA-14; 36 P18-17,PA-17; 35 P18-18,PA-18; 228 P18-19,PA-2; 229 P18-20,PA-5; 320 P18-21,PA-3; 322 P18-22,PA-1; 321 P18-23,PA-15; 323 P18-24,PA-16; 243 P6-4,CP-P6-9; 244 P6-5,CP-P6-10; 313 CP-P6-42,DOC-P2-1; 314 CP-P6-44,DOC-P2-2; 315 CP-P6-43,DOC-P2-3; 316 CP-P6-24,DOC-P2-6; 318 CP-P6-40,TFR-A; 317 CP-P6-41,TFR-B.

HARNESS LOCATOR 309320-006 (P,J) CONTROL PANEL EXTENSION. WIRE No. 310 P-1,J-1;

WIRE RUN LISTING

Table 1: HARNESS LOCATOR 605749-001. Columns: WIRE No., SUB-ASSEMBLY, MAIN INTERCONNECT ASSEMBLY, CLR, AWG. Includes sub-assemblies 605749-001 and 605749-002.

Table 2: HARNESS LOCATOR 605749-001 (CONTINUED). Columns: WIRE No., SUB-ASSEMBLY, MAIN INTERCONNECT ASSEMBLY, CLR, AWG. Includes sub-assembly 605749-001.

Table 3: HARNESS LOCATOR 605659. Columns: WIRE No., SUB-ASSEMBLY, STD. FIELD TB, CLR, AWG. Includes sub-assembly 605659.

Table 4: HARNESS LOCATOR 605454-005 (J7). Columns: WIRE No., HARNESS, OPTIONAL FIELD OUTPUTS, CLR, AWG. Includes sub-assembly 605454-005.

Table 5: HARNESS LOCATOR 605454-005 (J8). Columns: WIRE No., HARNESS, OPTIONAL SERIAL I/O, CLR, AWG. Includes sub-assembly 605454-005.

Table 6: HARNESS LOCATOR 605454-007 (P8, TB). Columns: WIRE No., HARNESS, OPTIONAL SERIAL I/O, CLR, AWG. Includes sub-assembly 605454-007.

Table 7: HARNESS LOCATOR 483763 (J, CP-P1, CP-P2). Columns: WIRE No., HARNESS, CONTROL PANEL, CLR, AWG. Includes sub-assembly 483763.

Table 8: HARNESS LOCATOR 309320-005. Columns: WIRE No., HARNESS, OPTIONAL 8 IN. EXTENSION HARNESS, CLR, AWG. Includes sub-assembly 309320-005.

Table 9: HARNESS LOCATOR 309320-005. Columns: WIRE No., HARNESS, OPTIONAL 8 IN. EXTENSION HARNESS, CLR, AWG. Includes sub-assembly 309320-005.

Table 10: HARNESS LOCATOR 309320-005. Columns: WIRE No., HARNESS, OPTIONAL 8 IN. EXTENSION HARNESS, CLR, AWG. Includes sub-assembly 309320-005.

Table 11: WIRE No., ADDITIONAL WIRING, CLR, AWG. Includes sub-assembly 7000 SERIES (H7ADTB).

Table 12: WIRE No., ADDITIONAL WIRING, CLR, AWG. Includes sub-assembly 7000 SERIES (H7ADTB).

Table 13: WIRE No., ADDITIONAL WIRING, CLR, AWG. Includes sub-assembly 7000 SERIES (H7ADTB).

Table 14: WIRE No., ADDITIONAL WIRING, CLR, AWG. Includes sub-assembly 7000 SERIES (H7ADTB).

Table 15: WIRE No., ADDITIONAL WIRING, CLR, AWG. Includes sub-assembly 7000 SERIES (H7ADTB).

Table 16: WIRE No., ADDITIONAL WIRING, CLR, AWG. Includes sub-assembly 7000 SERIES (H7ADTB).

PROJECT NAME: WIRING DIAGRAM. 7000 SERIES (H7ADTB) "H" FRAME, GROUP 5 CONTROLS. Includes drawing date (09/11/03), scale (1:1), and drawing number (DS747352).