

**Parts List  
for AC Generators**

**QAS48 PdS USA**

PAGE

Parts list.....23

**Registration code**  
Collection : APC Q  
Tab : 39

**Printed matter N°**  
2950 0764 00

1998 - 04



---

ATLAS COPCO – PORTABLE AIR DIVISION  
B-2630 AARTSELAAR BELGIUM

---

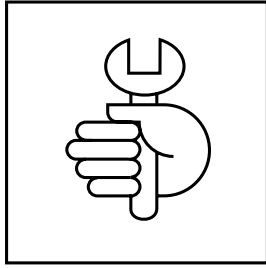


---

# PARTS LIST

---

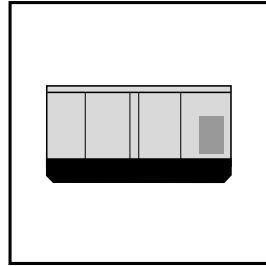
## Contents



SERVICE PAKS AND SERVICE PARTS

PAGE 25

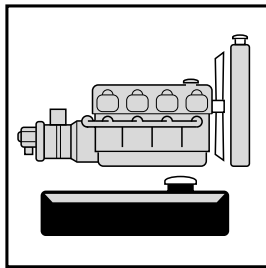
---



FRAME, BODYWORK

PAGE 29

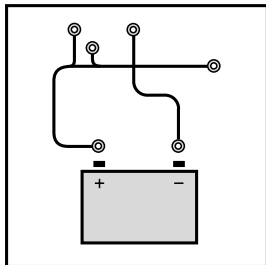
---



ENGINE AND ACCESSORIES

PAGE 37

---



ELECTRICAL SYSTEM

PAGE 47

---

---

### **ORDERING SPARE PARTS**

Always quote the part number, the designation and the quantity of the parts required, as well as the type and the serial number of the machine.

### **EXPLANATION OF THE COLUMNS**

#### *REF : REFERENCE CODE*

Establishes the connection between a part in the list and a part in the illustration. "-" means that the part is not shown in the illustration.

#### *PART NUMBER*

If no part number is given, the part cannot be obtained as a spare part.  
Parts marked with a dot are part of the assembly listed right above them.

#### *DESIGNATION*

Usually this is the name of the part. For standard parts, in addition to the name, a number of characteristics are given.

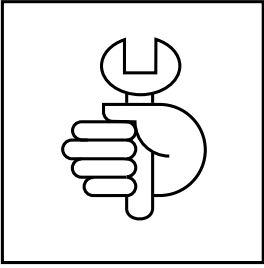
#### *QTY : QUANTITY*

Indicates the quantity of the part concerned. "AR" stands for "As Required".

---

# PARTS LIST

---



SERVICE PAKS AND SERVICE PARTS

---

SERVICE PAKS

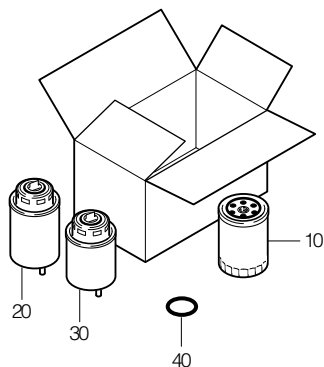
**1**

SERVICE PARTS

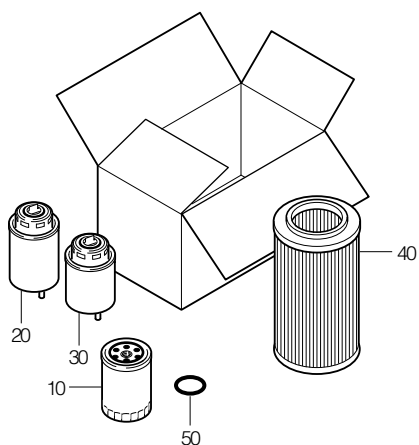
**2**



## SERVICE PAK 250 h

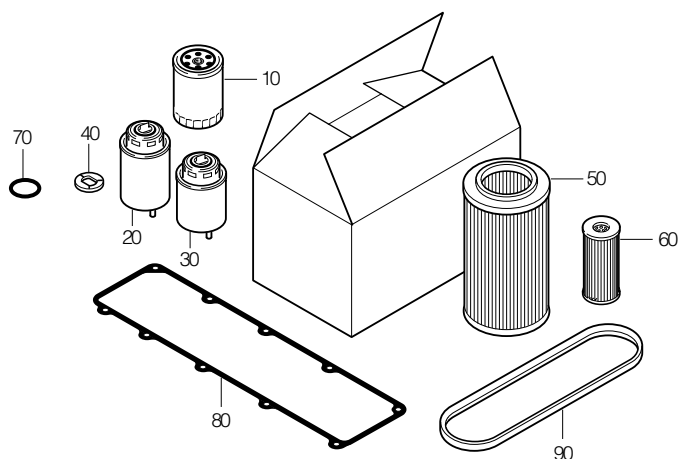


## SERVICE PAK 500 h



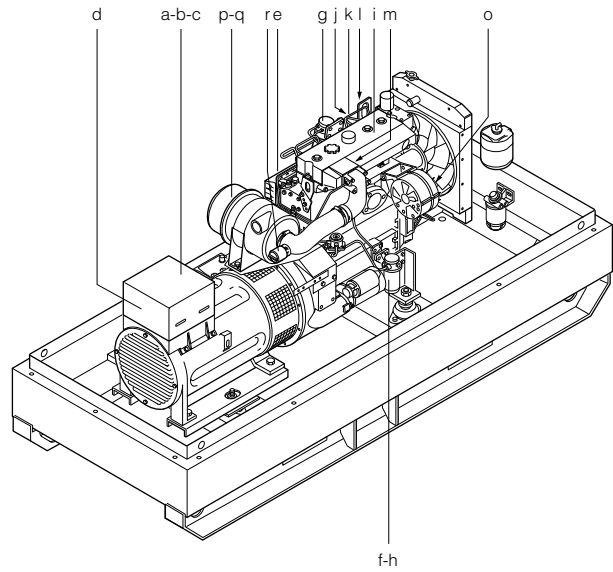
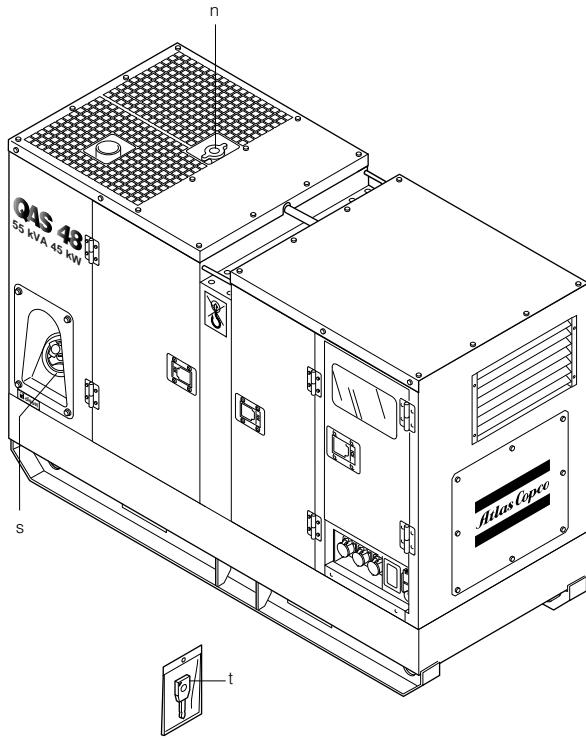
## ATLAS COPCO SERVICE PAKS

## SERVICE PAK 2000 h



REF	PART NUMBER	DESIGNATION	QTY
-	2912 4258 05	SERVICE PAK 250 hours	
•10	-	OIL FILTER	1
•20	-	FUEL FILTER	1
•30	-	PRE FUEL FILTER	1
•40	-	GASKET DRAIN PLUG	1
-	2912 4259 06	SERVICE PAK 500 hours	
•10	-	OIL FILTER	1
•20	-	FUEL FILTER	1
•30	-	PRE FUEL FILTER	1
•40	-	AIR FILTER ELEMENT	1
•50	-	GASKET DRAIN PLUG	1

REF	PART NUMBER	DESIGNATION	QTY
-	2912 4260 07	SERVICE PAK 2000 hours	
•10	-	OIL FILTER	1
•20	-	FUEL FILTER	1
•30	-	PRE FUEL FILTER	1
•40	-	GASKET STRAINER FUEL LIFT PUMP	1
•50	-	AIR FILTER ELEMENT	1
•60	-	AIR FILTER SAFETY CARTRIDGE	1
•70	-	GASKET DRAIN PLUG	1
•80	-	GASKET ROCKER COVER	1
•90	-	V-BELT, FAN	1



REF PART NUMBER DESIGNATION QTY

ALTERNATOR

a	2914 9000 00	REGULATOR UVR-6	
b	2914 9004 00	DIODE D6 IN REGULATOR	
c	2914 9005 00	THYRISTOR IN REGULATOR	
d	2914 9003 00	ROTATING DIODE BRIDGE	

ENGINE

e	2914 9100 00	OIL FILTER	
f	2914 9103 00	FUEL FILTER 1	
g	2914 9102 00	FUEL FILTER 2	
h	2914 9117 00	GLASS BOWL FUEL FILTER 1	
i	2914 9110 00	GASKET ROCKER COVER	
j	2914 9105 00	TEMPERATURE SWITCH	
k	2914 9106 00	OIL PRESSURE SWITCH	
l	2914 9108 00	FUEL STOP SOLENOID	
m	2914 9109 00	PRE HEAT PLUG	
n	2914 9107 00	RADIATOR FILLING CAP	
o	2914 9112 00	V-BELT	

AIR FILTER

p	2914 9304 00	AIR FILTER ELEMENT	
q	2914 9305 00	AIR FILTER SAFETY CARTRIDGE	
r	1619 3188 00	AIR FILTER DUST VALVE	

REF PART NUMBER DESIGNATION QTY

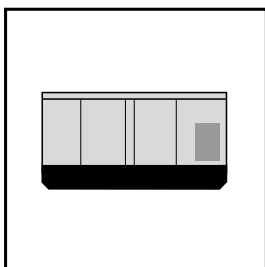
OTHERS

s	2914 9500 00	KEY (FUEL CAP)	
t	2914 9501 00	KEY (CONTACT)	

---

# PARTS LIST

---



FRAME, BODYWORK

---

FRAME AND MOUNTS

**3**

BODYWORK

**4**

FOAM SET

**5**

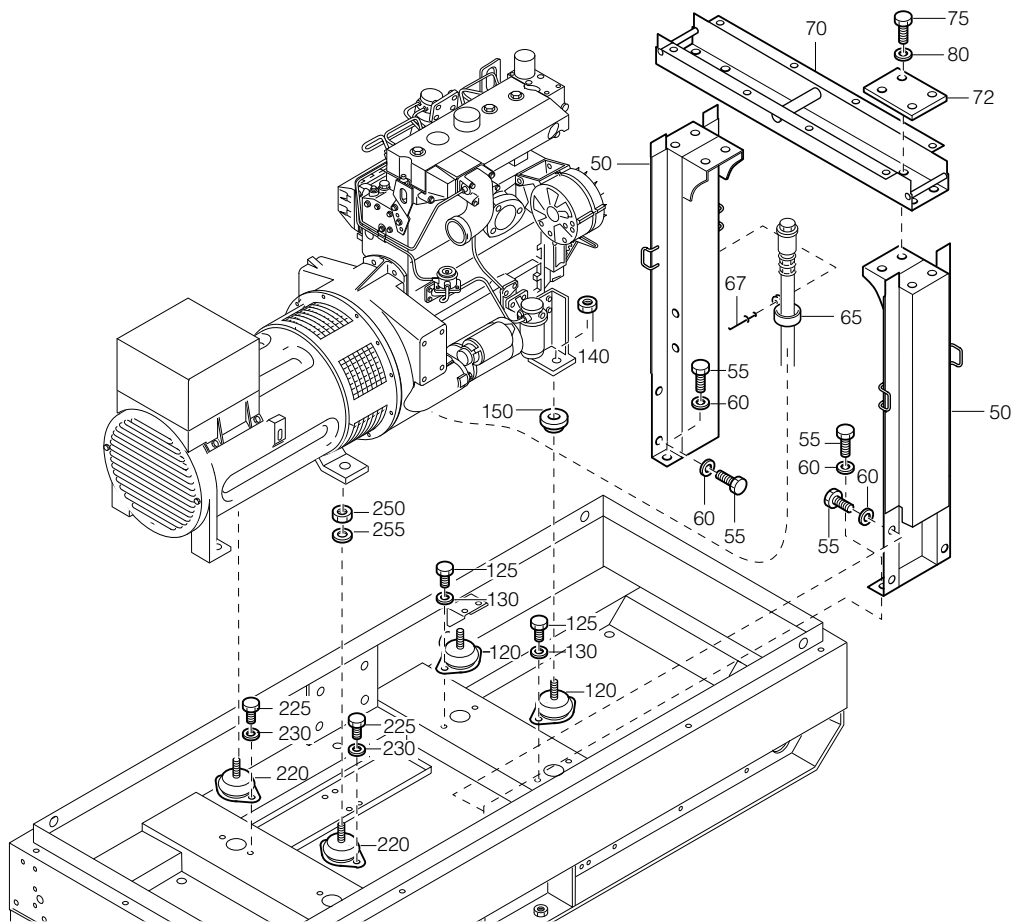
MARKINGS

**6**

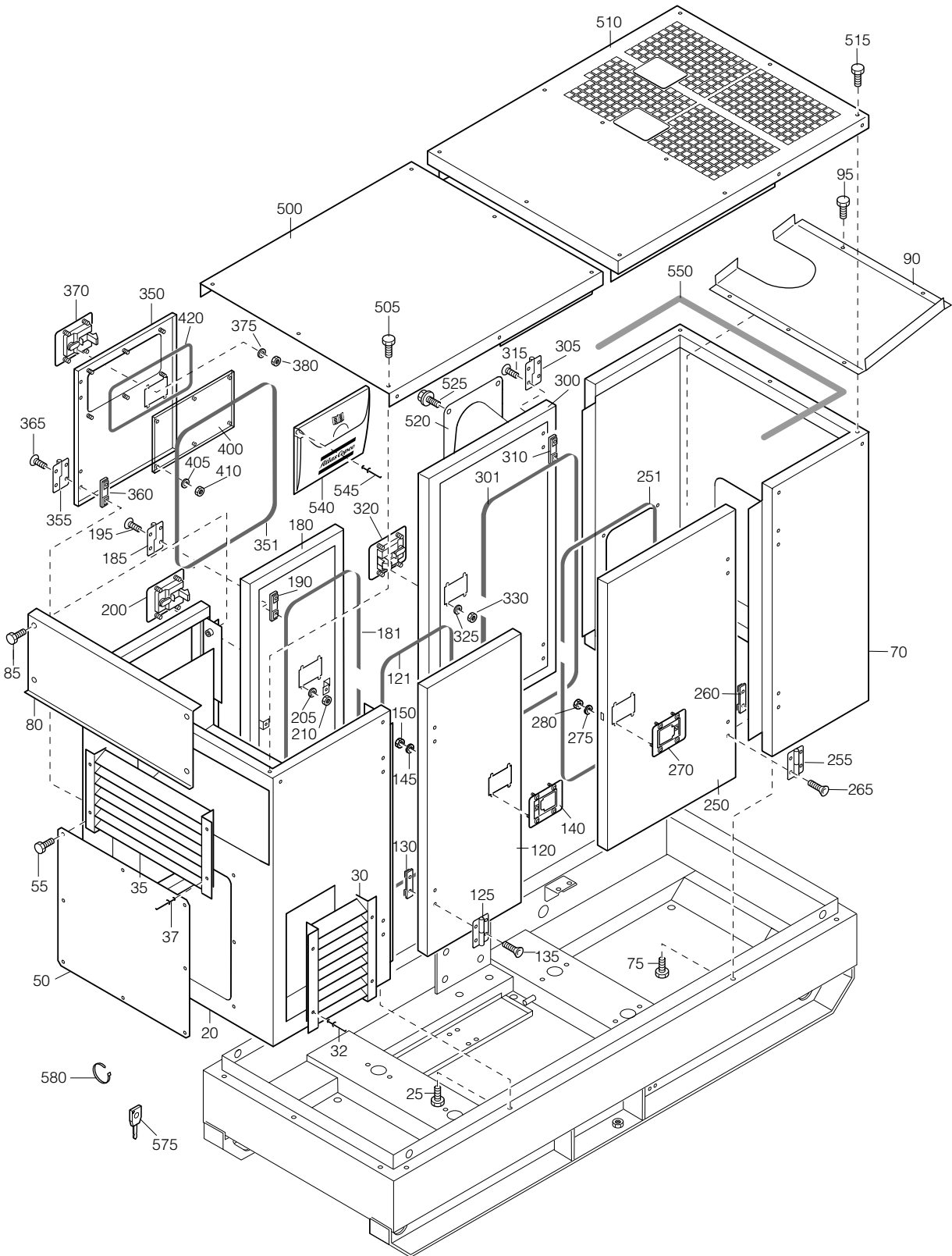
DECALS

**7**





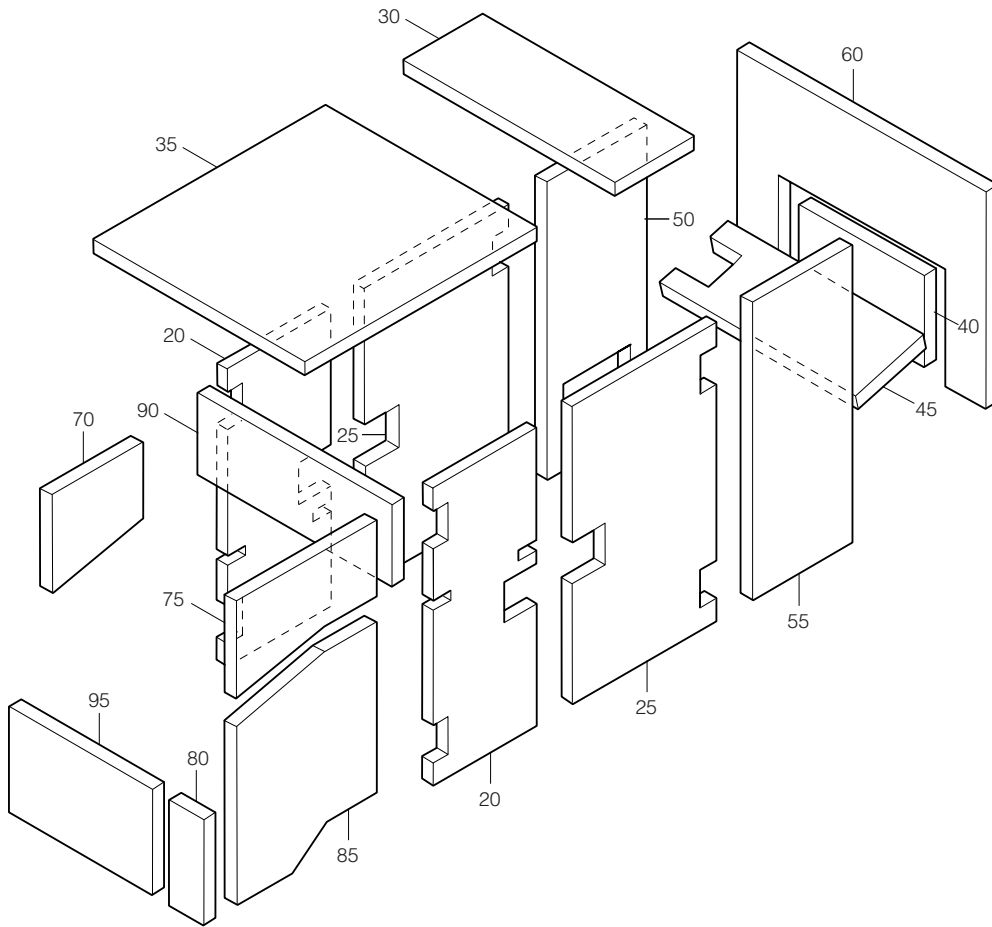
REF	PART NUMBER	DESIGNATION	QTY	REF	PART NUMBER	DESIGNATION	QTY
50	1615 7059 05	LIFTING SUPPORT	2				
55	0147 1400 03	HEXAGON BOLT	12				
60	0301 2358 00	WASHER	12				
65	1079 3461 02	CLIP	1				
67	0129 3108 00	BLIND RIVET	1				
70	1615 7060 01	BEAM	1				
72	1615 8610 00	PLATE	2				
75	0147 1402 03	HEXAGON BOLT	8				
80	0301 2358 00	WASHER	8				
120	1619 5506 81	BUFFER ASS'Y	2				
125	0147 1323 15	HEXAGON BOLT	4				
130	0301 2335 00	WASHER	4				
140	0291 1128 39	LOCKNUT	2				
150	1615 7061 00	SPACER	2				
220	1619 5506 81	BUFFER ASS'Y	2				
225	0147 1323 15	HEXAGON BOLT	4				
230	0301 2335 00	WASHER	4				
250	0291 1128 39	LOCKNUT	2				
255	0302 1162 00	WASHER	2				



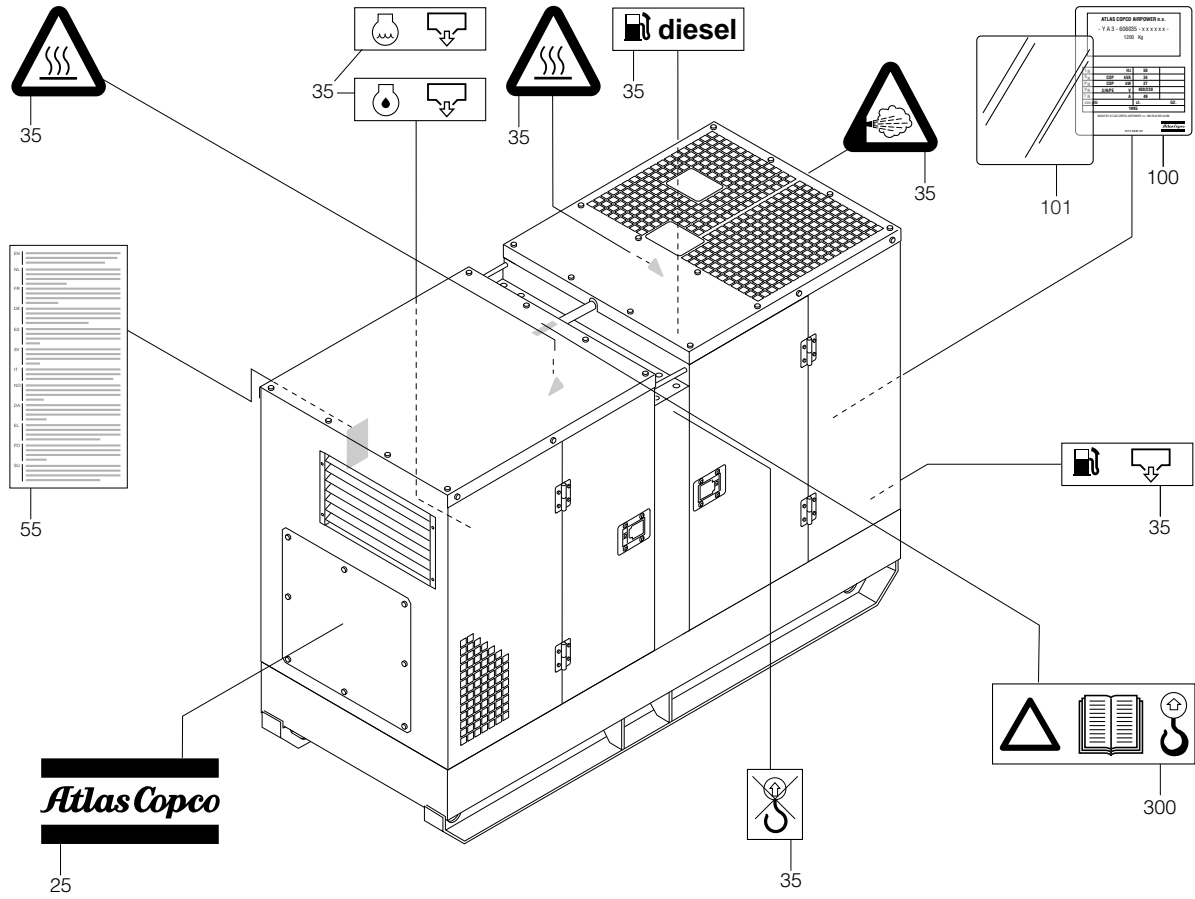
# BODYWORK

REF	PART NUMBER	DESIGNATION	QTY	REF	PART NUMBER	DESIGNATION	QTY
20	1615 7046 03	REAR PANEL	1	545	1615 5556 00	RIVET	2
25	1619 2766 00	BOLT	7	550	1615 7057 00	SEAL	2
30	1615 8921 00	BAFFLE	1	575	1615 7271 00	KEY	2
32	0129 3175 00	BLIND RIVET	4	580	1088 1301 03	CABLE STRIP	1
35	1615 8920 00	BAFFLE	1				
37	0129 3175 00	BLIND RIVET	4				
50	1615 7104 00	PLATE	1				
55	1619 2766 00	BOLT	8				
70	1615 7048 01	FRONT PANEL	1				
75	1619 2766 00	BOLT	7				
80	1615 7049 01	BAFFLE	1				
85	1619 2766 00	BOLT	4				
90	1615 7050 02	BAFFLE(FUEL TANK)	1				
95	1619 2766 00	BOLT	5				
120	1615 7051 03	DOOR	1				
121	1619 2665 00	SEAL	AR				
125	1615 5686 01	HINGE (RH)	2				
130	1615 5684 00	BRACKET	4				
135	0216 1324 03	SCREW	8				
140	1615 6967 03	HANDLE	1				
145	0301 2321 00	WASHER	4				
150	0291 1108 00	LOCKNUT	4				
180	1615 7051 03	DOOR	1				
181	1619 2665 00	SEAL	AR				
185	1615 5685 01	HINGE (LH)	2				
190	1615 5684 00	BRACKET	4				
195	0216 1324 03	SCREW	8				
200	1615 6967 03	HANDLE	1				
205	0301 2321 00	WASHER	4				
210	0291 1108 00	LOCKNUT	4				
250	1615 7052 02	DOOR	1				
251	1619 2665 00	SEAL	AR				
255	1615 5686 01	HINGE (RH)	2				
260	1615 5684 00	BRACKET	4				
265	0216 1324 03	SCREW	8				
270	1615 6967 03	HANDLE	1				
275	0301 2321 00	WASHER	4				
280	0291 1108 00	LOCKNUT	4				
300	1615 7052 02	DOOR	1				
301	1619 2665 00	SEAL	AR				
305	1615 5685 01	HINGE (LH)	2				
310	1615 5684 00	BRACKET	4				
315	0216 1324 03	SCREW	8				
320	1615 6967 03	HANDLE	1				
325	0301 2321 00	WASHER	4				
330	0291 1108 00	LOCKNUT	4				
350	1615 7053 04	DOOR	1				
351	1202 6584 00	SEAL	AR				
355	1615 5685 01	HINGE (LH)	2				
360	1615 5684 00	BRACKET	4				
365	0216 1324 03	SCREW	8				
370	1615 6967 03	HANDLE	1				
375	0301 2321 00	WASHER	4				
380	0291 1108 00	LOCKNUT	4				
400	1615 7054 00	WINDOW	1				
405	0301 2321 00	WASHER	6				
410	0266 2108 00	NUT	6				
420	1615 7057 00	SEAL	AR				
500	1615 7055 01	ROOF	1				
505	1619 2766 00	BOLT	12				
510	1615 7056 02	ROOF	2				
515	1619 2766 00	BOLT	16				
520	1615 6972 01	FUNNEL	1				
525	1615 5664 00	SCRAPER BOLT	4				
540	1615 5555 01	DOCUMENT HOLDER	1				

## FOAM SET

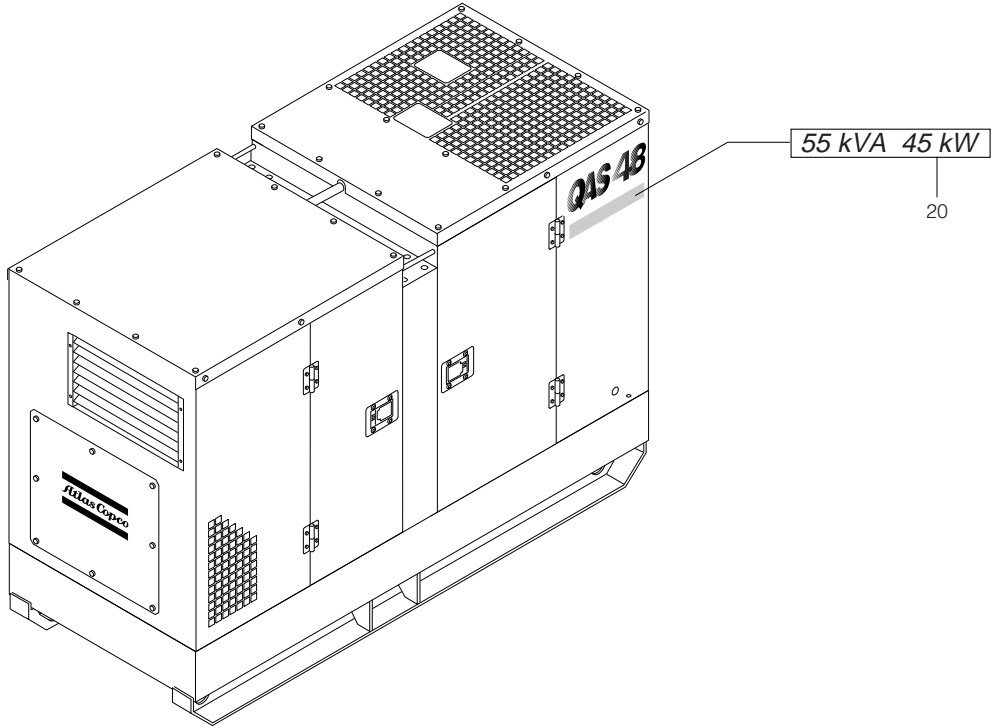


REF	PART NUMBER	DESIGNATION	QTY	REF	PART NUMBER	DESIGNATION	QTY
20	-	SILENCING FOAM	2				
25	-	SILENCING FOAM	2				
30	-	SILENCING FOAM	1				
35	-	SILENCING FOAM	1				
40	-	SILENCING FOAM	1				
45	-	SILENCING FOAM	1				
50	-	SILENCING FOAM	1				
55	-	SILENCING FOAM	1				
60	-	SILENCING FOAM	1				
70	-	SILENCING FOAM	1				
75	-	SILENCING FOAM	1				
80	-	SILENCING FOAM	1				
85	-	SILENCING FOAM	1				
90	-	FOAM	1				
95	-	SILENCING FOAM	1				
-	1079 0003 32	SILENCING FOAM 2000mm x 1500mm x 30mm					



REF	PART NUMBER	DESIGNATION	QTY
25	0690 1101 16	HOUSE MARK	4
35	1079 9901 87	INFORM. LABEL	1
55	1079 9905 41	INSTRUCTION LABEL	1
100	-	DATA LABEL	2
101	-	PROTECT. DECAL	2
300	1079 9902 58	WARNING LABEL	1

REF	PART NUMBER	DESIGNATION	QTY
-----	-------------	-------------	-----



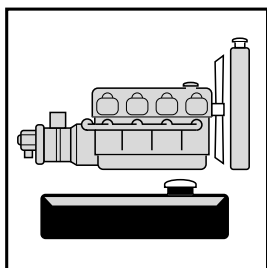
REF	PART NUMBER	DESIGNATION	QTY
20	1079 9909 36	INFORMATION LABEL	2

REF	PART NUMBER	DESIGNATION	QTY
-----	-------------	-------------	-----

---

# PARTS LIST

---



ENGINE AND ACCESSORIES

---

ENGINE ACCESSORIES

**8**

ENGINE AND ACCESSORIES QAS48

**9**

RADIATOR

**10**

FUEL SYSTEM

**11**

SPILLAGE FREE

**12**

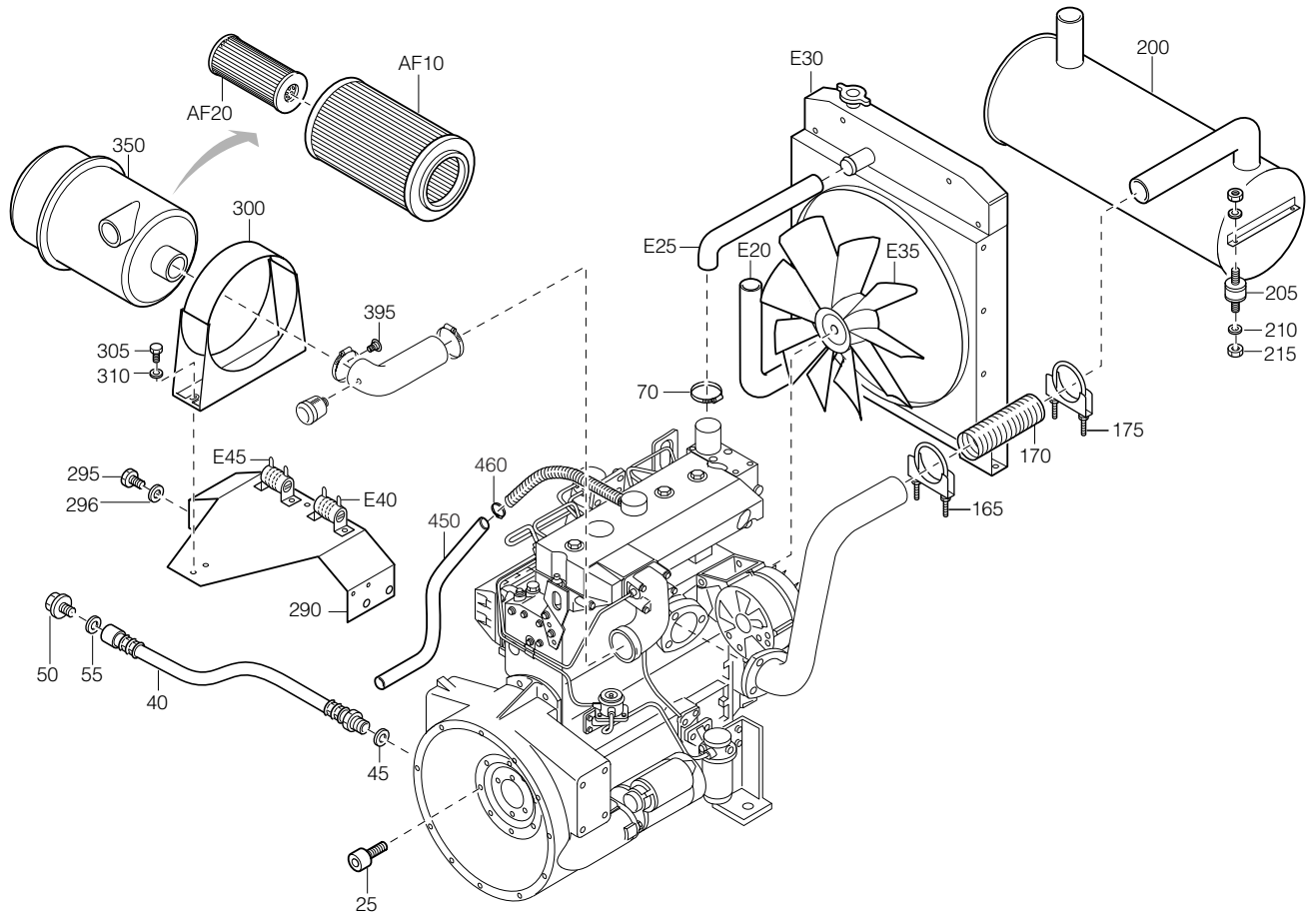
NOT SPILLAGE FREE

**13**

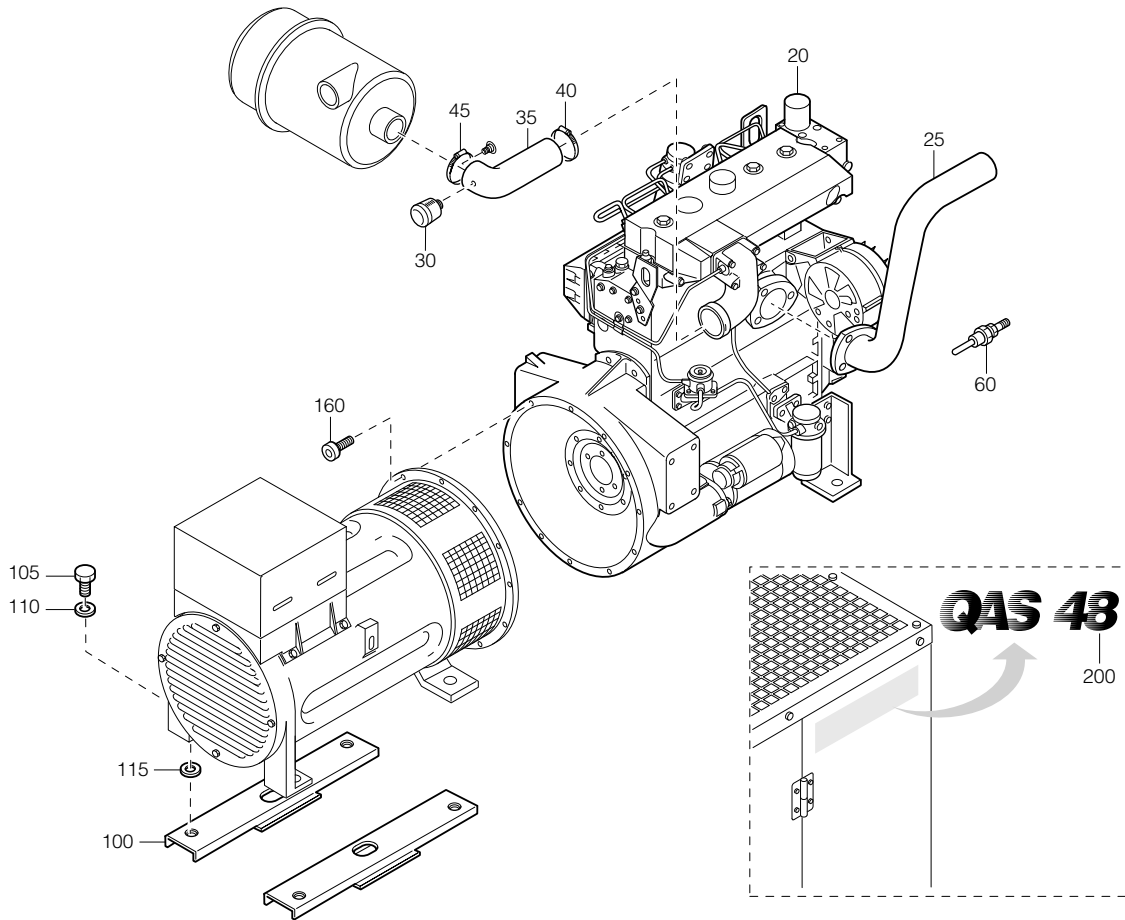
EXTERNAL FUEL KIT

**14**



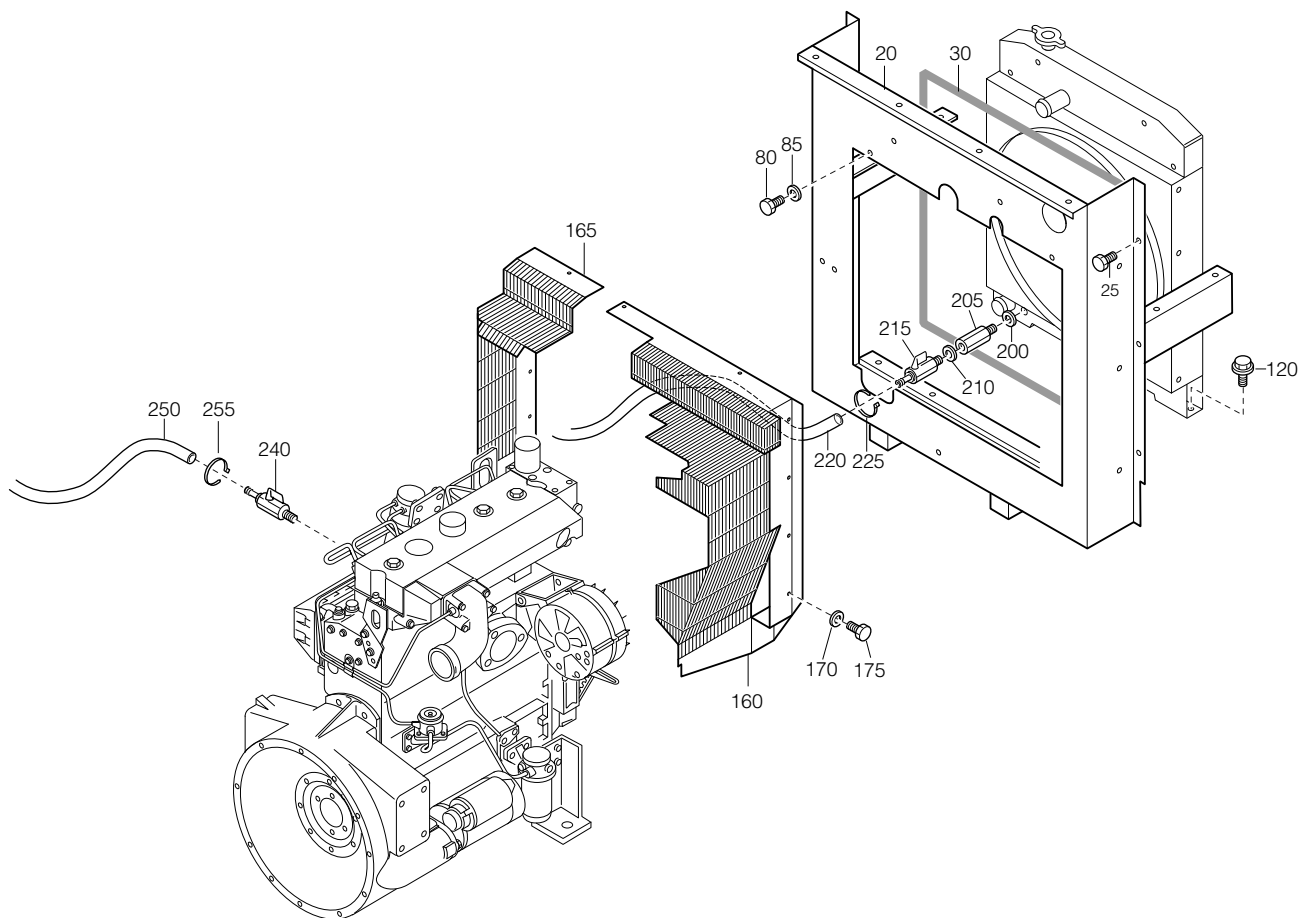


REF	PART NUMBER	DESIGNATION	QTY	REF	PART NUMBER	DESIGNATION	QTY
21	1615 7167 80	ENGINE ACCESS.	1	350	1615 7208 01	AIRFILTER	1
•E20	1615 7167 00	HOSE	1	•AF10	2914 9306 00	AIR FILTER ELEMENT	1
•E25	1615 7168 00	HOSE	1	•AF20	2914 9307 00	SAFETY CARTRIDGE	1
•E30	1615 7246 02	RADIATOR	1	395	1615 6960 00	NIPPLE	1
•E35	1615 7247 00	FAN	1	450	0099 9910 47	PLASTIC TUBE	AR
•E40	1615 7237 00	RESISTOR	1	460	0347 6110 00	HOSE CLAMP	1
•E45	1615 7236 00	RESISTOR	1				
25	0211 4287 00	CAP SCREW	8				
40	1615 7039 00	HOSE ASSEMBLY	1				
45	0661 1030 00	SEALING WASHER	1				
50	0686 3716 02	HEXAGON PLUG	1				
55	0661 1033 00	SEALING WASHER	1				
70	0347 6113 00	HOSE CLAMP	4				
165	0346 2900 07	CLAMP	1				
170	1615 6952 00	EXHAUST PIPE	1				
175	0346 2900 07	CLAMP	1				
200	1615 8694 01	MUFFLER	1				
205	1615 6954 00	RUBBER BUFFER	4				
210	0333 3227 00	LOCKWASHER	8				
215	0266 2110 00	NUT	8				
290	1615 7043 03	SUPPORT	1				
295	0147 1398 03	HEXAGON BOLT	4				
296	0333 3237 00	LOCKWASHER	4				
300	1615 7209 00	SUPPORT	1				
305	0147 1327 03	HEXAGON BOLT	2				
310	0301 2335 00	WASHER	2				



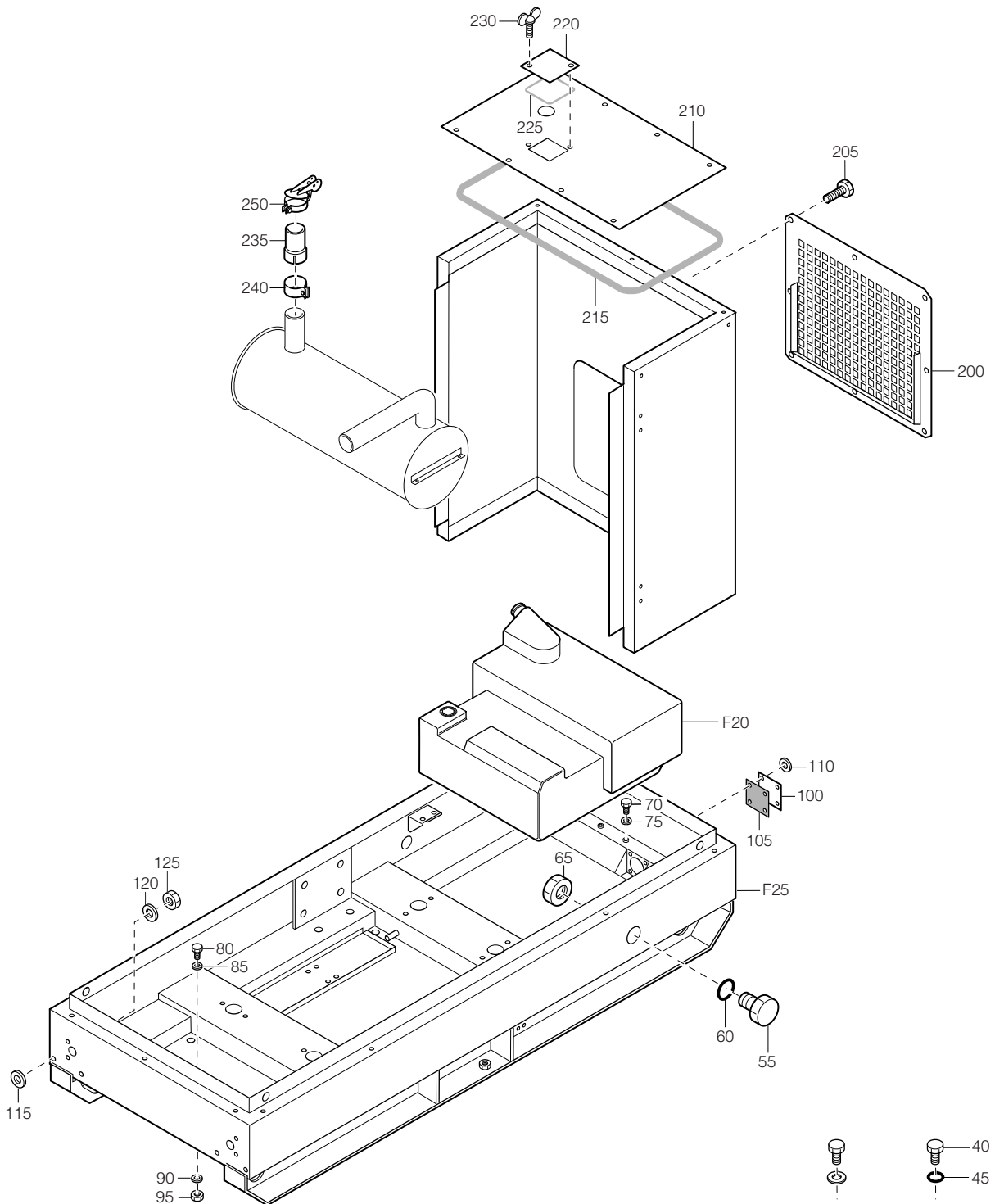
REF	PART NUMBER	DESIGNATION	QTY
20	X615 7038 03	ENGINE	1
25	1615 7040 00	EXHAUST PIPE	1
30	1619 3790 05	INDICATOR	1
35	1615 7250 01	PIPE	1
40	0347 6131 00	HOSE CLIP	1
45	0347 6100 04	HOSE CLIP	1
60	1089 0637 01	TEMP. SWITCH	1
100	1615 7062 01	SUPPORT (ALT.)	2
105	0147 1440 03	SCREW, HEX. HEAD	4
110	0333 3242 00	LOCK WASHER	4
115	0301 2371 00	WASHER	4
160	0211 1362 03	CAP SCREW	12
200	1615 7073 00	DECAL	2

REF	PART NUMBER	DESIGNATION	QTY
-----	-------------	-------------	-----

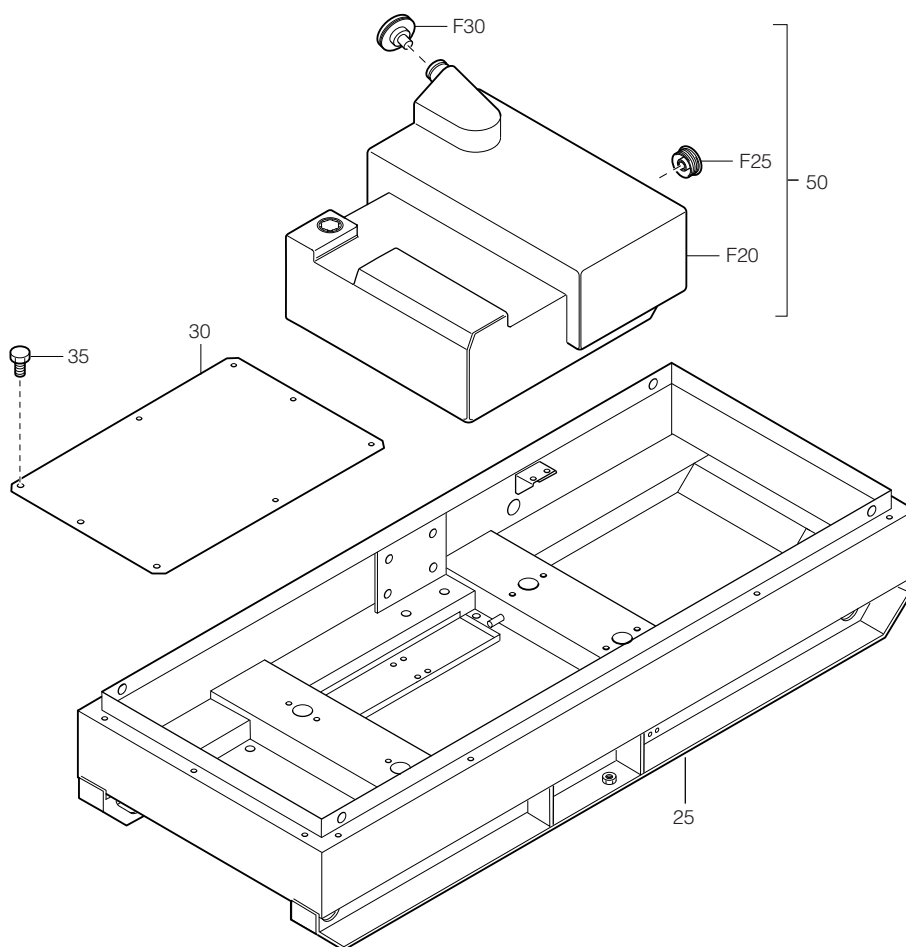


REF	PART NUMBER	DESIGNATION	QTY
20	1615 7068 05	COOLER PLATE	1
25	1619 2766 00	BOLT	10
30	1202 5211 00	SEAL	AR
80	0147 1326 03	HEXAGON BOLT	5
85	0303 1274 01	WASHER	5
120	1615 5664 00	SCRAPER BOLT	1
160	1615 8937 01	FAN GRATING	1
165	1615 8936 01	FAN GRATING	1
170	0301 2321 00	WASHER	11
175	0147 1246 03	HEXAGON BOLT	11
200	0653 1062 00	FLAT GASKET	1
205	1615 7071 01	EXTENSION	1
210	0653 1062 00	FLAT GASKET	1
215	1615 7072 00	VALVE	1
220	0099 9910 29	PLASTIC TUBE	AR
225	1088 1301 02	CABLE STRIP	1
240	1615 7072 00	VALVE	1
250	0099 9910 29	PLASTIC TUBE	AR
255	1088 1301 02	CABLE STRIP	1

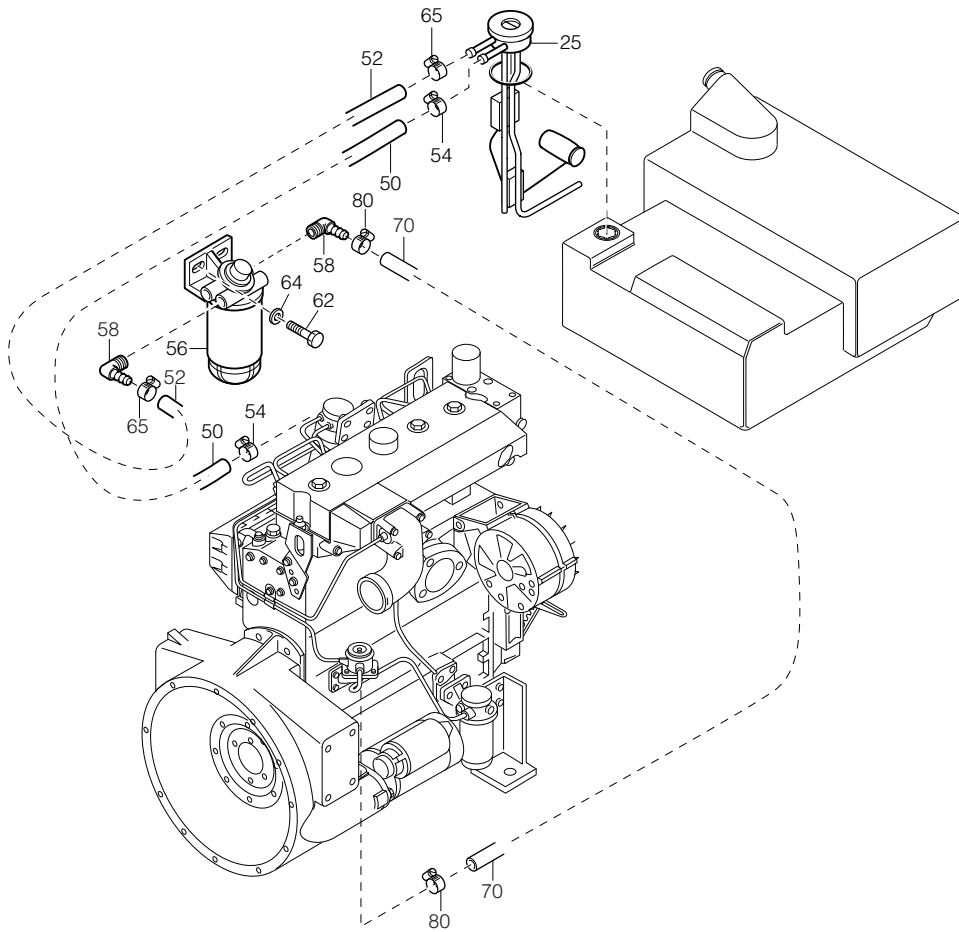
REF	PART NUMBER	DESIGNATION	QTY
-----	-------------	-------------	-----



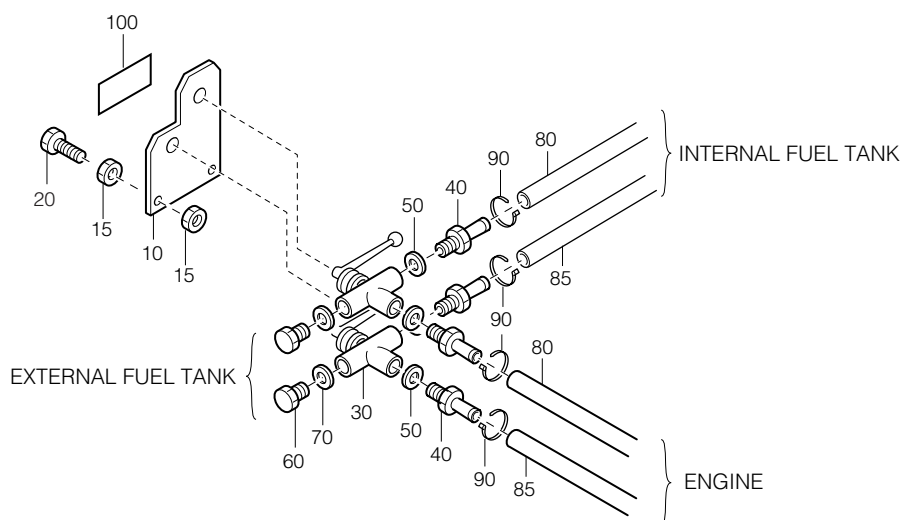
REF	PART NUMBER	DESIGNATION	QTY	REF	PART NUMBER	DESIGNATION	QTY
20	1615 9042 80	FRAME/FUELTANK	1				
•F20	1615 7035 81	FUELTANK ASS'Y	1				
•F25	1615 9042 01	FRAME	1				
25	0686 3716 30	HEXAGON PLUG	2				
30	0653 1100 00	FLAT GASKET	2				
40	1088 0524 02	PLUG	3				
45	0663 6122 00	O-RING	3				
55	0686 3716 29	HEXAGON PLUG	1				
60	0663 6136 00	O-RING	1				
65	0623 2100 09	BACK NUT	1				
70	0147 1401 03	HEXAGON BOLT	2				
75	0653 1059 00	FLAT GASKET	2				
80	0147 1208 03	HEXAGON BOLT	2				
85	0653 1019 00	FLAT GASKET	2				
90	0333 3215 00	LOCKWASHER	2				
95	0266 2107 00	NUT	2				
100	1615 9059 00	PLATE	1				
105	1615 9064 00	SEAL	1				
110	0653 1033 00	FLAT GASKET	4				
115	0653 1033 00	FLAT GASKET	6				
120	0333 3227 00	LOCKWASHER	6				
125	0266 2110 00	NUT	6				
200	1615 9061 00	SERVICE PLATE	1				
205	1619 2766 00	BOLT	8				
210	1615 9053 00	PLATE	1				
215	1615 7057 00	SEAL	AR				
220	1615 9058 00	RADIATOR COVER	1				
225	1615 7057 00	SEAL	AR				
230	0223 1322 02	WING SCREW	2				
235	1615 9126 00	PIPE	1				
240	0346 3000 24	PIPE CLAMP	1				
250	1615 6955 00	RAINCAP	1				



REF	PART NUMBER	DESIGNATION	QTY	REF	PART NUMBER	DESIGNATION	QTY
25	1615 7058 09	FRAME	1				
30	1615 7047 00	PLATE	1				
35	1619 2766 00	BOLT	8				
50	1615 7035 81	FUELTANK ASS'Y	1				
•F20	1615 7035 02	FUELTANK	1				
•F25	1615 5577 00	PLUG	1				
•F30	1615 6947 00	COVER	1				



REF	PART NUMBER	DESIGNATION	QTY	REF	PART NUMBER	DESIGNATION	QTY
25	1615 6948 01	LEVEL GAUGE	1				
50	0075 4005 55	FUEL HOSE	AR				
52	0075 4005 55	FUEL HOSE	AR				
54	0347 6102 00	HOSE CLIP	2				
56	1615 7397 00	WATERSEPARATOR	1				
58	1615 8933 00	HOSE NIPPLE	2				
62	0147 1325 03	HEXAGON BOLT	2				
64	0301 2335 00	WASHER	2				
65	0347 6102 00	HOSE CLIP	2				
70	0075 4005 55	FUEL HOSE	AR				
80	0347 6103 00	HOSE CLIP	2				



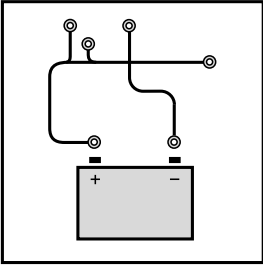
REF	PART NUMBER	DESIGNATION	QTY
10	1615 9342 00	SUPPORT	1
15	0266 2110 00	NUT	4
20	0216 1957 57	SCREW	2
30	1615 8007 00	3-WAY VALVE	2
40	0571 0020 14	HOSE NIPPLE	4
50	0653 1124 00	FLAT GASKET	4
60	0686 3716 02	HEXAGON PLUG	2
70	0653 1124 00	FLAT GASKET	2
80	0075 4005 55	FUEL HOSE	1
85	0075 4005 55	FUEL HOSE	1
90	0347 6103 00	HOSE CLIP	4
100	1079 9901 87	INFORM. LABEL	1

REF	PART NUMBER	DESIGNATION	QTY
-----	-------------	-------------	-----

---

## PARTS LIST

---



ELECTRICAL SYSTEM, CONTROL PANEL

---

ELECTRICAL SYSTEM

**15**

CUBICLE AND ACCESSORIES

**16-17**

CUBICLE

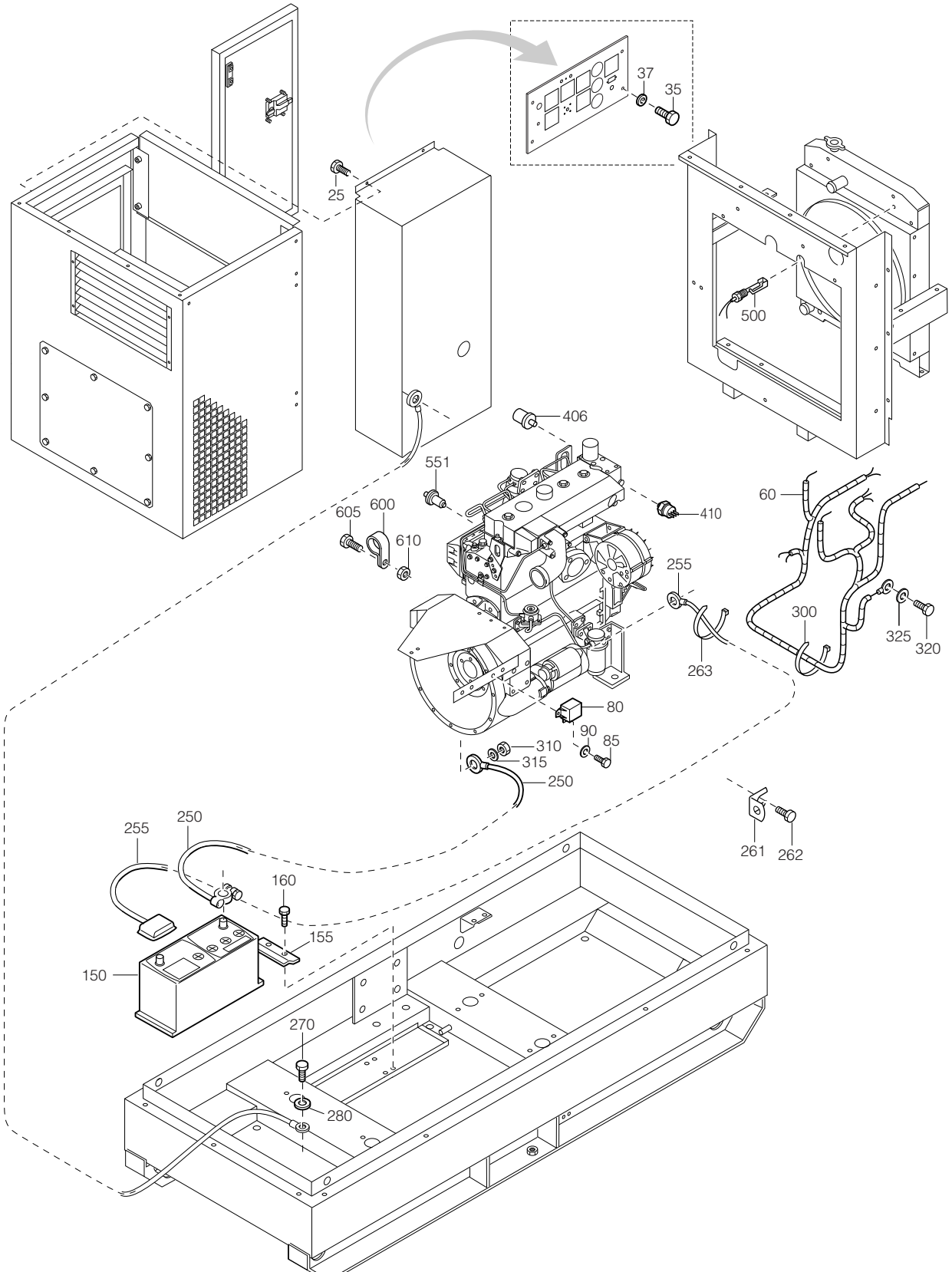
**18-19**

CONTROL PANEL

**20**

ELECTRONIC SPEED CONTROL

**21**



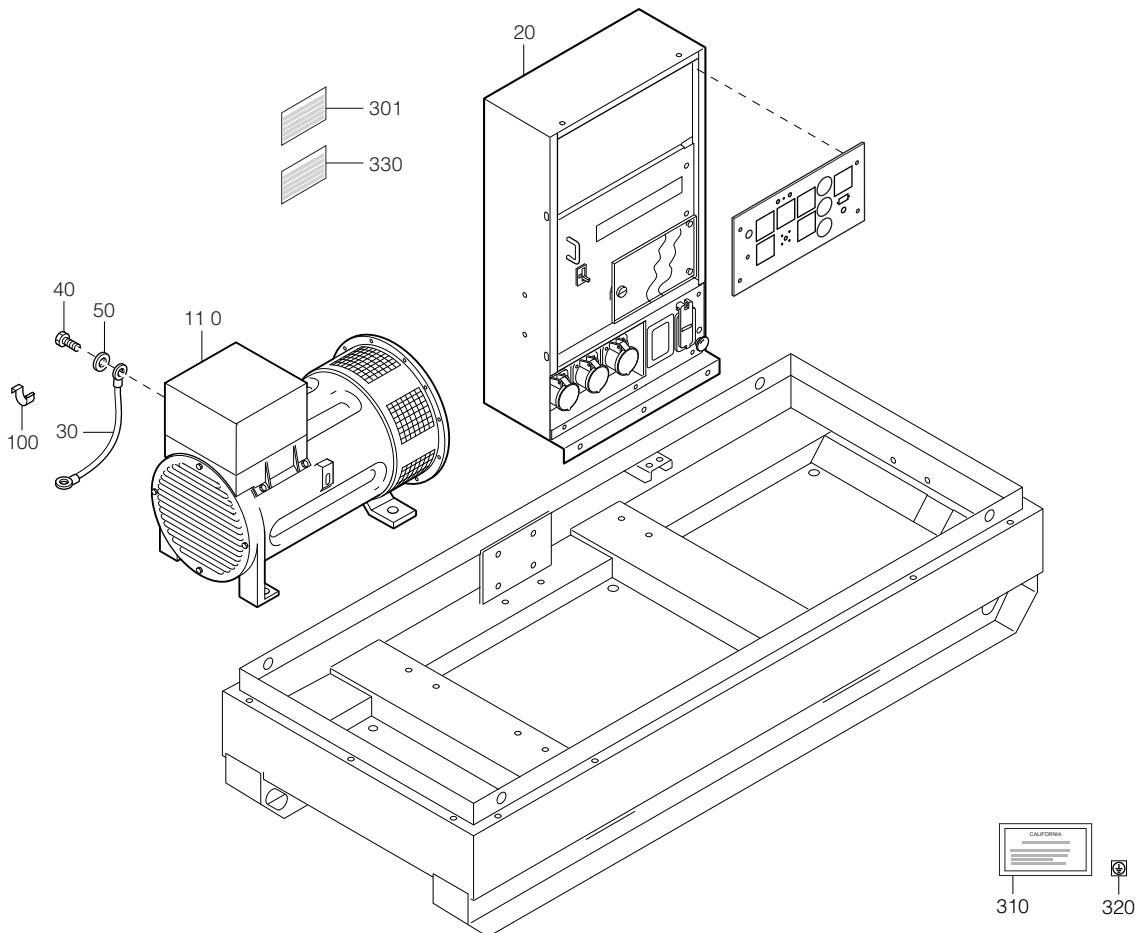
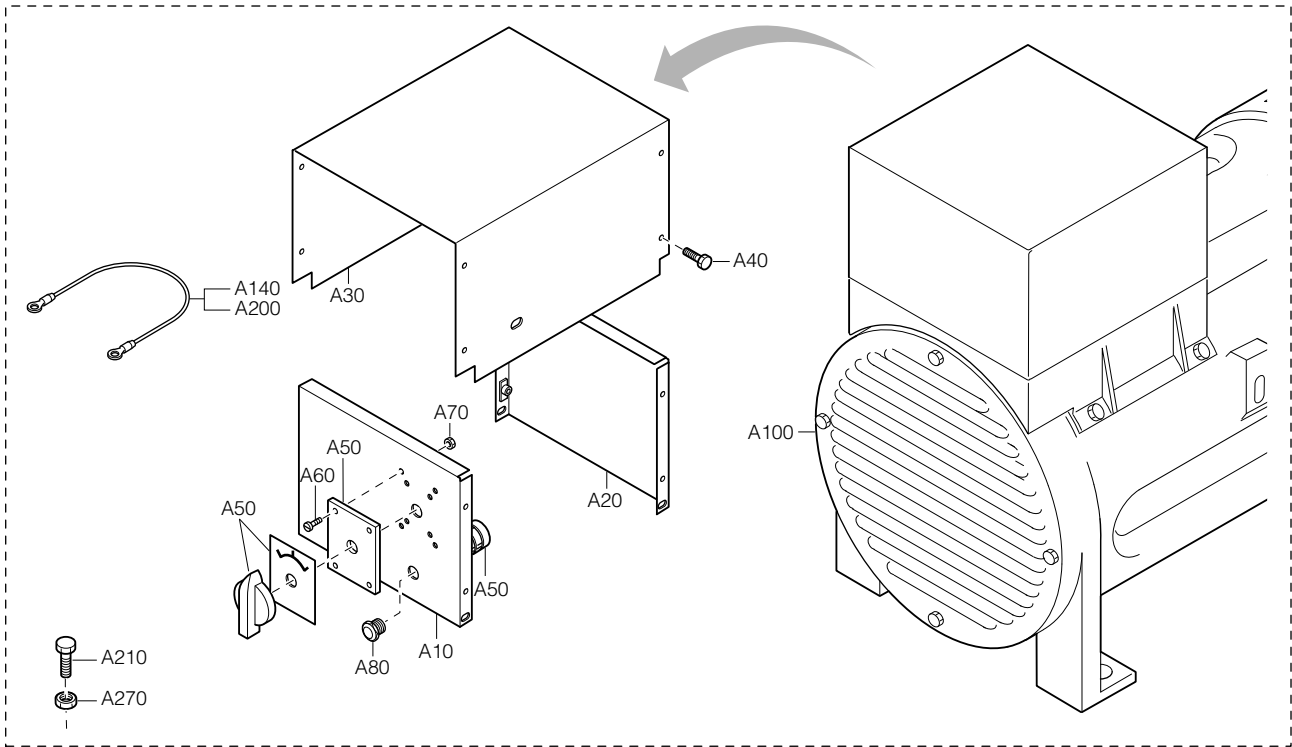
---

# ELECTRICAL SYSTEM

---

# 15

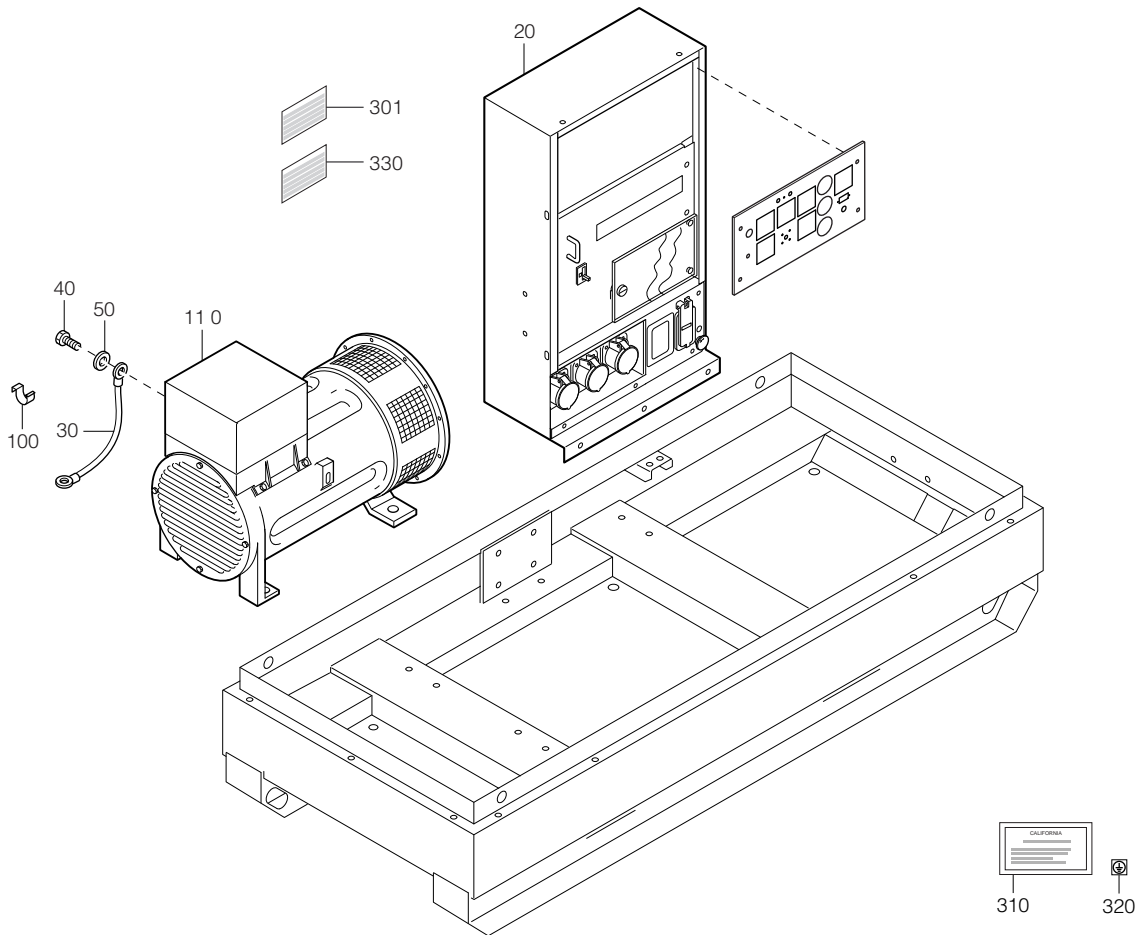
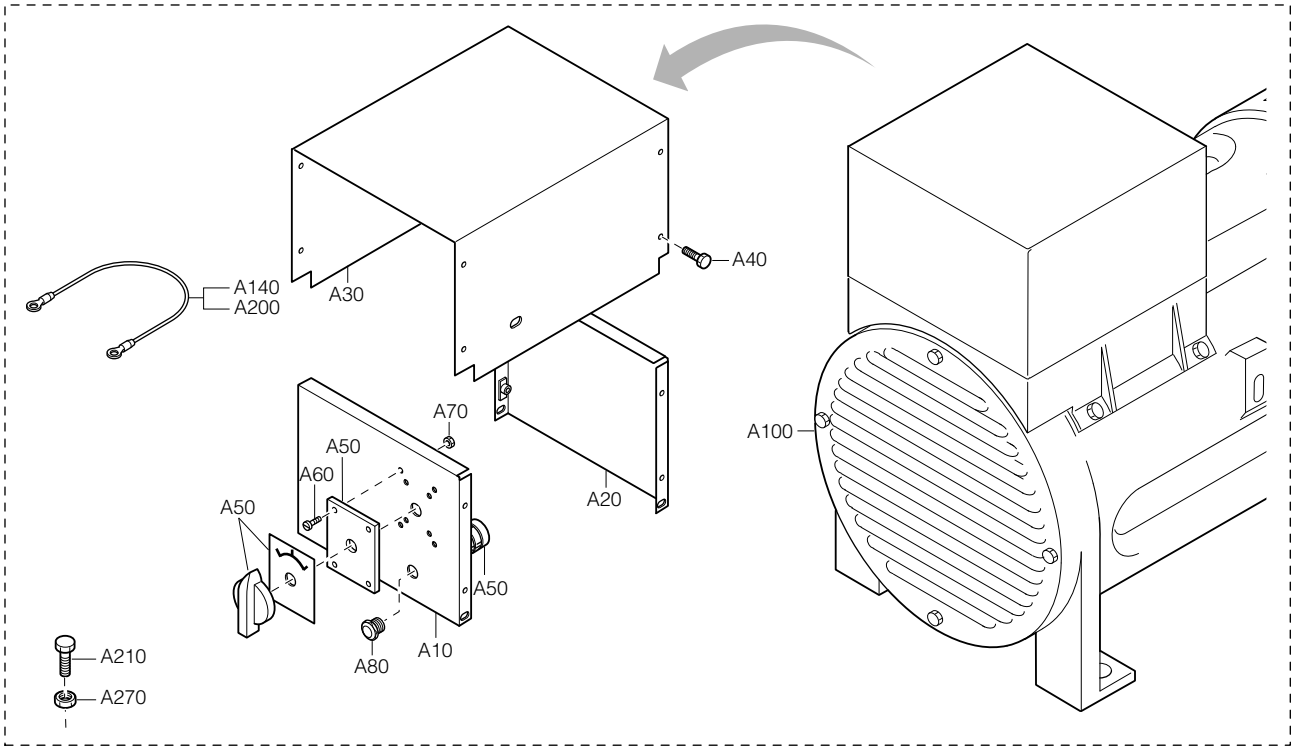
REF	PART NUMBER	DESIGNATION	QTY	REF	PART NUMBER	DESIGNATION	QTY
25	1619 2766 00	BOLT	2				
35	0147 1320 03	HEXAGON BOLT	4				
37	0301 2335 00	WASHER	4				
60	1615 9424 00	WIRE HARNESS	1				
80	1089 0585 01	RELAY	2				
85	0147 1246 03	HEXAGON BOLT	3				
90	0333 3220 00	LOCKWASHER	1				
150	0926 5400 12	BATTERY	1				
155	1615 6067 01	CLAMP	1				
160	1619 2766 00	BOLT	4				
250	2250 2382 46	BATTERY CABLE	1				
255	2250 2382 54	BATTERY CABLE	1				
261	1613 0809 00	BRACKET	1				
262	0147 1360 03	HEXAGON BOLT	1				
263	1088 1301 02	CABLE STRIP	1				
270	0147 1360 03	HEXAGON BOLT	1				
280	1088 0019 02	CONTACT WASHER	1				
300	1088 1301 03	CABLE STRIP	25				
310	0147 1397 03	HEXAGON BOLT	1				
315	0333 3237 00	LOCKWASHER	1				
320	0147 1397 03	HEXAGON BOLT	1				
325	0333 3237 00	LOCKWASHER	1				
406	1089 0565 14	OIL PRESSURE SENSOR	1				
410	1089 0567 12	TEMP. SENSOR	1				
500	1089 0568 01	LEVEL SENSOR	1				
551	1089 0579 51	OIL PRESSURE SWITCH	1				
600	1613 0801 03	CLAMP	1				
605	0147 1252 05	HEXAGON BOLT	1				
610	0266 2108 00	NUT	1				



# CUBICLE AND ACCESSORIES (STANDARD)

# 16

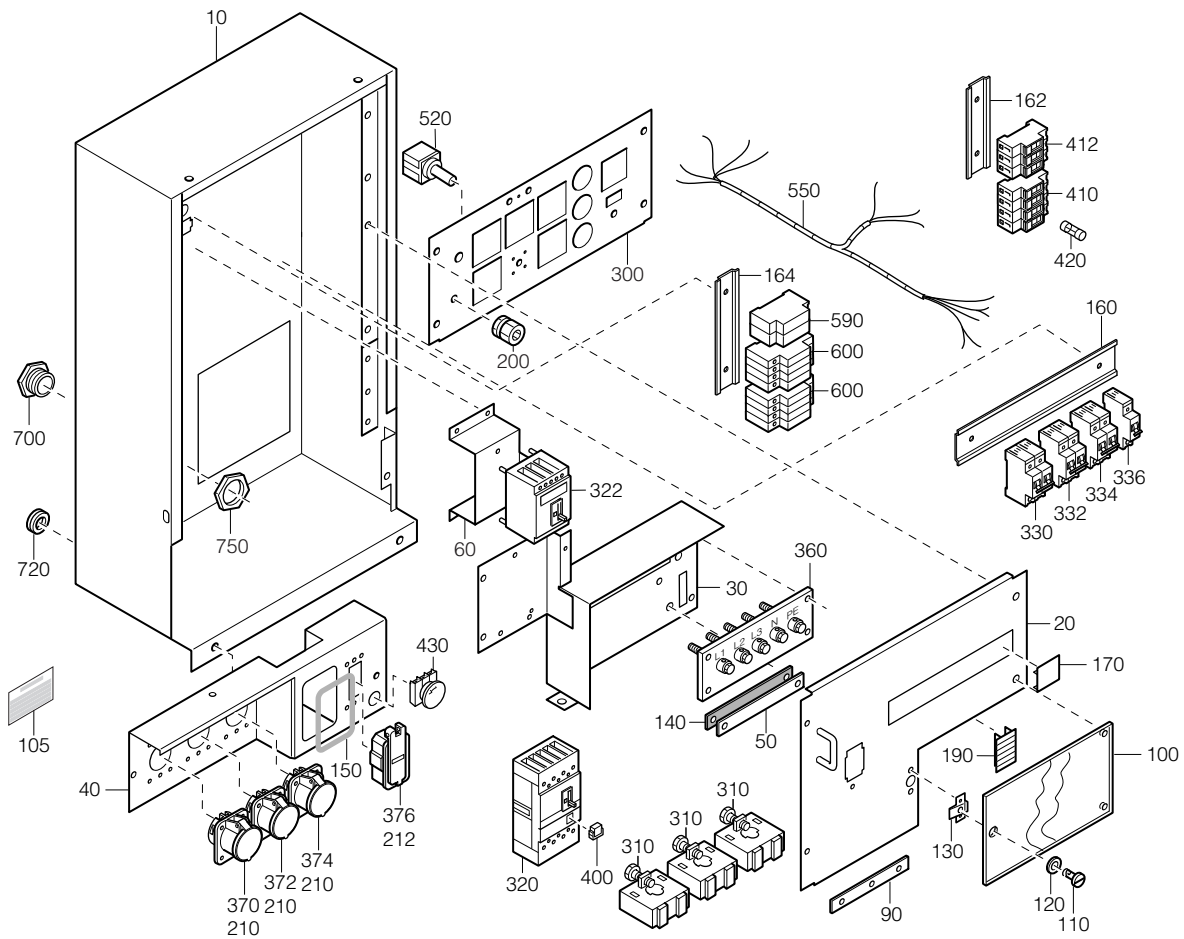
REF	PART NUMBER	DESIGNATION	QTY	REF	PART NUMBER	DESIGNATION	QTY
20	1900 1013 29	CUBICLE (For details see page 54)	1				
30	1615 8628 00	WIRE ASS'Y	1				
40	0147 1359 03	HEXAGON BOLT	1				
50	0301 2344 00	WASHER	1				
100	1088 0830 09	CABLE CLAMP	1				
110	1615 9271 80	ALTERNATOR ASS'Y	1				
•A10	1615 9271 00	COVER (FRONT)	1				
•A20	1615 9272 01	COVER (BACK)	1				
•A30	1615 9273 00	COVER (TOP)	1				
•A40	1619 2766 00	BOLT	8				
•A50	1089 9378 15	SWITCH	1				
•A60	0162 4170 00	SCREW	4				
•A70	0266 2106 00	NUT	4				
•A80	1088 0524 02	PLUG	1				
•A100	1082 3025 03	ALTERNATOR	1				
•A140	1615 8250 00	WIRE ASS'Y	6				
•A200	1615 8256 00	WIRE ASS'Y	1				
•A210	1619 2766 00	BOLT	1				
•A270	1088 0302 03	NUT	1				
301	1079 9909 46	INFORMATION LABEL	1				
310	1079 9902 47	WARNING LABEL	1				
320	1079 9916 68	INFORMATION LABEL	1				
330	1079 9909 44	INFORM. LABEL	1				



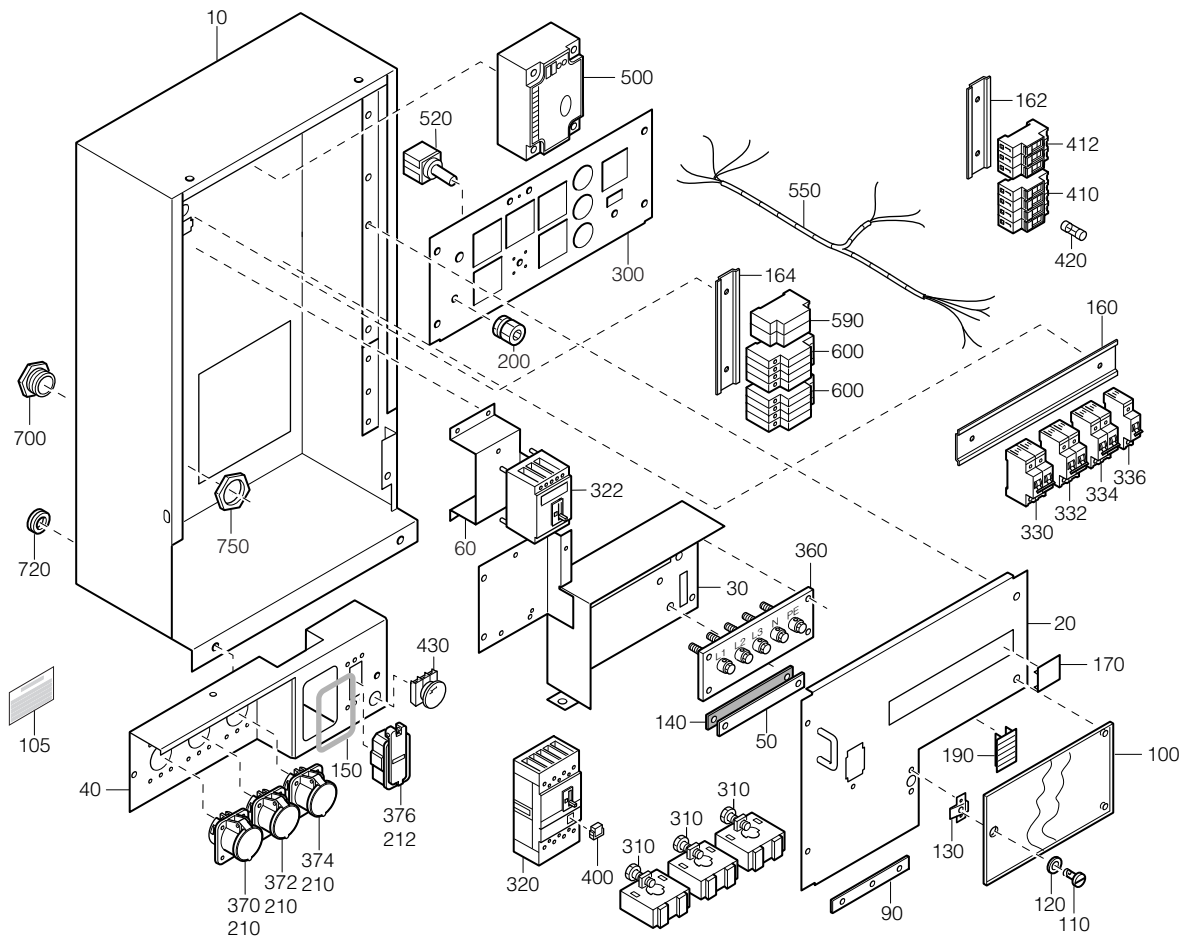
# CUBICLE AND ACCESSORIES (SF)

17

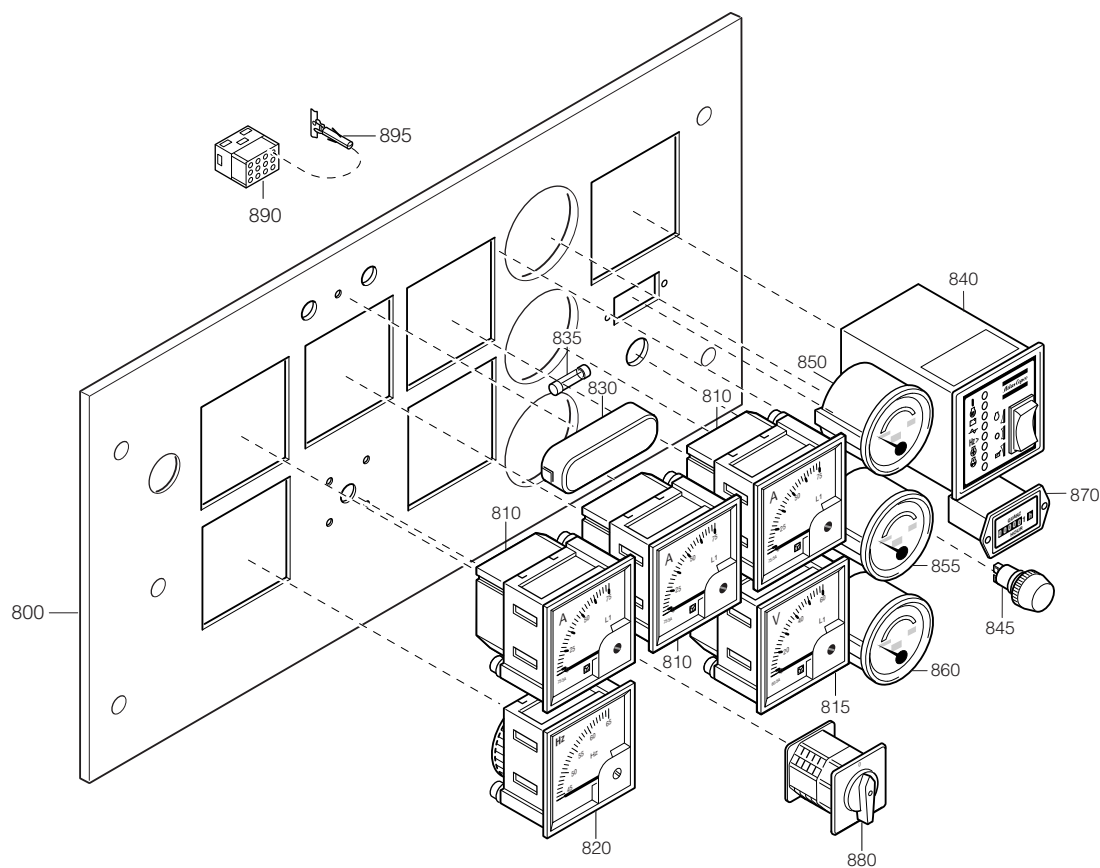
REF	PART NUMBER	DESIGNATION	QTY	REF	PART NUMBER	DESIGNATION	QTY
20	1900 1013 30	CUBICLE (For details see page 55)	1				
30	1615 8628 00	WIRE ASS'Y	1				
40	0147 1359 03	HEXAGON BOLT	1				
50	0301 2344 00	WASHER	1				
100	1088 0830 09	CABLE CLAMP	1				
110	1615 9271 80	ALTERNATOR ASS'Y	1				
•A10	1615 9271 00	COVER (FRONT)	1				
•A20	1615 9272 01	COVER (BACK)	1				
•A30	1615 9273 00	COVER (TOP)	1				
•A40	1619 2766 00	BOLT	8				
•A50	1089 9378 15	SWITCH	1				
•A60	0162 4170 00	SCREW	4				
•A70	0266 2106 00	NUT	4				
•A80	1088 0524 02	PLUG	1				
•A100	1082 3025 03	ALTERNATOR	1				
•A140	1615 8250 00	WIRE ASS'Y	6				
•A200	1615 8256 00	WIRE ASS'Y	1				
•A210	1619 2766 00	BOLT	1				
•A270	1088 0302 03	NUT	1				
301	1079 9909 46	INFORMATION LABEL	1				
310	1079 9902 47	WARNING LABEL	1				
320	1079 9916 68	INFORMATION LABEL	1				
330	1079 9909 44	INFORM. LABEL	1				



REF	PART NUMBER	DESIGNATION	QTY	REF	PART NUMBER	DESIGNATION	QTY
-	1900 1013 29	CUBICLE	1	•330	1089 9346 14	CIRCUIT BREAKER	1
•10	1615 9374 00	CUBICLE	1	•332	1089 9346 14	CIRCUIT BREAKER	1
•20	1615 9377 00	C.B. PANEL	1	•334	1089 9346 14	CIRCUIT BREAKER	1
•30	1615 9384 00	C.B. PANEL	1	•336	1089 9346 03	CIRCUIT BREAKER	1
•40	1615 9382 00	SOCKET PANEL	1	•360	1615 7095 00	TERMINAL BOARD	1
•50	1615 9336 00	CABLE CLAMP	1	•370	1089 9412 02	RECEPTACLE	1
•60	1615 9385 00	C.B. PANEL	1	•372	1089 9412 02	RECEPTACLE	1
•90	1615 9519 00	SPACER	1	•374	1089 9412 02	RECEPTACLE	1
•100	1615 9383 00	PLEXI DOOR	1	•376	1089 9412 01	RECEPTACLE	1
•105	1079 9903 07	WARNING LABEL	1	•410	1089 9356 01	FUSEHOLDER	1
•110	1615 6728 00	PLATE	1	•412	1089 9356 03	FUSEHOLDER	2
•120	1615 7166 00	STUD	1	•420	1089 9332 01	FUSE	5
•130	1615 6727 00	WASHER	1	•430	1089 9422 01	EMERGENCY STOP	1
•140	1615 9337 00	SEAL	1	•520	1089 9371 03	POTMETER	1
•150	1503 1056 00	SEAL	AR	•550	1615 7912 01	WIRE HARNESS	1
•160	0090 1400 02	RAIL	AR	•590	1089 9384 01	AUX. RELAY	2
•162	0090 1400 02	RAIL	AR	•600	1089 9400 07	CONTACTOR	2
•164	0090 1400 02	RAIL	AR	•700	0698 5140 52	CABLE GLAND	1
•170	1088 0500 05	COVER PLATE	AR	•720	1088 0801 26	GROMMET	1
•190	1088 0027 01	COVER PLATE	10	•750	1088 0302 09	NUT	1
•200	1089 9371 50	SPINDLE LOCK	1				
•210	1089 9412 12	PROTECT. COVER	3				
•212	1089 9412 11	PROTECT. COVER	1				
•300	1900 1013 83	CONTROL PANEL	1				
		(For details see page 56)					
•310	1089 9357 10	CURRENT TRANSF.	3				
•320	1089 9349 59	CIRCUIT BREAKER	1				
•322	1089 9349 53	CIRCUIT BREAKER	1				

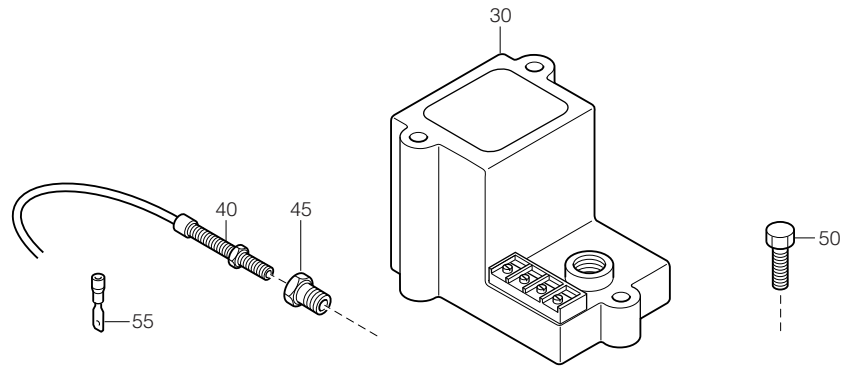


REF	PART NUMBER	DESIGNATION	QTY	REF	PART NUMBER	DESIGNATION	QTY
-	1900 1013 30	CUBICLE	1	•330	1089 9346 14	CIRCUIT BREAKER	1
•10	1615 9374 00	CUBICLE	1	•332	1089 9346 14	CIRCUIT BREAKER	1
•20	1615 9377 00	C.B. PANEL	1	•334	1089 9346 14	CIRCUIT BREAKER	1
•30	1615 9384 00	C.B. PANEL	1	•336	1089 9346 03	CIRCUIT BREAKER	1
•40	1615 9382 00	SOCKET PANEL	1	•360	1615 7095 00	TERMINAL BOARD	1
•50	1615 9336 00	CABLE CLAMP	1	•370	1089 9412 02	RECEPTACLE	1
•60	1615 9385 00	C.B. PANEL	1	•372	1089 9412 02	RECEPTACLE	1
•90	1615 9519 00	SPACER	1	•374	1089 9412 02	RECEPTACLE	1
•100	1615 9383 00	PLEXI DOOR	1	•376	1089 9412 01	RECEPTACLE	1
•105	1079 9903 07	WARNING LABEL	1	•410	1089 9356 01	FUSEHOLDER	1
•110	1615 6728 00	PLATE	1	•412	1089 9356 03	FUSEHOLDER	2
•120	1615 7166 00	STUD	1	•420	1089 9332 01	FUSE	5
•130	1615 6727 00	WASHER	1	•430	1089 9422 01	EMERGENCY STOP	1
•140	1615 9337 00	SEAL	1	•500	1089 9370 04	CONTROLLER	1
•150	1503 1056 00	SEAL	AR	•520	1089 9371 03	POTMETER	1
•160	0090 1400 02	RAIL	AR	•550	1615 9447 00	WIRE HARNESS	1
•162	0090 1400 02	RAIL	AR	•590	1089 9384 01	AUX. RELAY	2
•164	0090 1400 02	RAIL	AR	•600	1089 9400 07	CONTACTOR	2
•170	1088 0500 05	COVER PLATE	AR	•700	0698 5140 52	CABLE GLAND	1
•190	1088 0027 01	COVER PLATE	10	•720	1088 0801 26	GROMMET	1
•200	1089 9371 50	SPINDLE LOCK	1	•750	1088 0302 09	NUT	1
•210	1089 9412 12	PROTECT. COVER	3				
•212	1089 9412 11	PROTECT. COVER	1				
•300	1900 1013 83	CONTROL PANEL	1				
		(For details see page 56)					
•310	1089 9357 10	CURRENT TRANSF.	3				
•320	1089 9349 59	CIRCUIT BREAKER	1				
•322	1089 9349 53	CIRCUIT BREAKER	1				



REF	PART NUMBER	DESIGNATION	QTY
-	1900 1013 83	CONTROL PANEL	1
•800	1615 9375 00	CONTROL PANEL	1
•810	1089 9381 14	AMPEREMETER	3
•815	1089 9383 01	VOLTMETER	1
•820	1089 9382 02	FREQUENCYMETER	1
•830	1089 9354 01	PANELLIGHT	1
•835	1619 1609 00	BULB	1
•840	1089 9355 30	R.S. MODULE	1
•845	1089 9423 01	FUSE	1
•850	1089 0630 21	TEMP. GAUGE	1
•855	1089 0565 23	PRESSURE GAUGE	1
•860	1089 0631 01	FUEL LEVEL GAUGE	1
•870	1089 9420 01	HOURMETER	1
•880	1089 9082 22	VOLTAGE SWITCH	1
•890	1088 0015 30	CONNECTOR	1
•895	1088 0015 14	PIN	11

REF	PART NUMBER	DESIGNATION	QTY
-----	-------------	-------------	-----



REF	PART NUMBER	DESIGNATION	QTY	REF	PART NUMBER	DESIGNATION	QTY
30	1089 9370 12	ACTUATOR	1				
40	1089 9370 22	SPEED PICK-UP	1				
45	1615 8336 00	BUSHING	1				
50	1619 2766 00	BOLT	2				
55	0694 5606 01	TAB	2				



**Parts List**  
**for AC Generators**

**QAS48 PdS USA**