



# Optimal Series

Automatic Transfer *Switch*

**Installation and User Manual for the  
OPT2600 *Automatic Transfer Switch***

**Full Version**

File: OPT2600 Rev1.4.doc  
Nov. 5, 2004

## **READ MANUAL BEFORE INSTALLING UNIT**

### **Receipt of shipment and warranty return information**

Upon receipt of shipment, carefully remove the unit from the shipping container and thoroughly examine the unit for shipping damage. In case of damage, immediately contact the carrier and request that an inspection report be filed prior to contacting the COMPANY.

All returned items must be shipped prepaid and include a return material authorization (RMA) number issued by the COMPANY. RMA forms are available by contacting the COMPANY.

### **Limited Warranty**

The COMPANY (DynaGen Technologies Inc.) warrants the product with specifications as explained herein. The COMPANY shall repair or replace any defective materials or workmanship, f.o.b. the Company's factory, which prove to be defective under normal and proper use within three year's from the date of shipment. This constitutes the only warranty and no other warranty shall be implied.

**We welcome your comments and suggestions. Please contact us at:**

DynaGen Technologies Inc.  
Phone: 1-888-396-2436  
(902) 562 0133  
Fax: (902) 567 0633  
Email: [support@dynagen.ca](mailto:support@dynagen.ca)  
WEB SITE: [www.dynagen.ca](http://www.dynagen.ca)

# Table of Contents

<b>1: GENERAL DESCRIPTION</b>	4
1:1 Switchgear	4
1:1:1 Specification	4
1:1:2 Operation	5
1:2 Relay Control Module	6
1:2:1 Sensing	6
Adjustment Procedure	6
1:2:2 System Operation	7
<b>2: INSTALLATION INFORMATION</b>	7
2:1 General	7
2:2 Recommended Upstream Protection:	7
2:3 Open Type transfer Switches:	8
2:4 Remote start switch installation:	9
<b>3: REPLACING PARTS</b>	9
3:1 Replacement Parts List	10
3:1 Main Switch Removal and Replacement	11
3:2 Motor Removal and Replacement	12
<b>4: MANUAL TRANSFER OF MECHANISM</b>	12
<b>5: RECOMMENDED MAINTENANCE</b>	13
<b>6: DRAWINGS</b>	
6:1 Mechanical Assembly	14
6:2 General Arrangement	15
6:3 OPT2600- 2-120/240V Wiring Diagram	16
6:4 OPT2600- 3-208/240V Wiring Diagram	17
6:5 OPT2600- 3-480V Wiring Diagram	18
6:6 OPT2600- 3-600V Wiring Diagram	19
<b>7: ENGINE EXERCISER</b>	20

## **1: GENERAL DESCRIPTION**

### **1:1 Switchgear:**

The OPT2600 transfer switch mechanism consists of a basic mechanical switching assembly that can be configured to satisfy various application requirements. This manual describes the following models:

OPT2600-2-120/240V-E



OPT2600-3-208/240V-E

OPT2600-3-480V-E

OPT2600-3-600V-E

#### **1:1:1 Specifications for OPT2600 models**

Please refer to the following Optimal Series Automatic Transfer Switch rating label located on switch for proper ratings associated with your specific model.

	<b>OPTIMAL SERIES™</b> <b>AUTOMATIC TRANSFER SWITCH</b>		
	SERIAL NUMBER <input type="text"/>		
RATING: VOLTS <input type="text"/>	AMPS <input type="text"/>	HZ <input type="text"/>	PHASE <input type="text"/>
SYSTEM VOLTS <input type="text"/>	PHASE <input type="text"/>	PHASE <input type="text"/>	
MODEL NUMBER <input type="text"/>			
MANUF. DATE <input type="text"/>			

**WARNING: Never exceed the voltage and amperage ratings of the transfer switch.**

### 1:1:2 Operation:

The OPT2600 includes the suitable sensing circuitry for automatic transfer of an electrical load to a stand-by power supply in the event of a drop or loss of voltage of any or all phases of the normal power supply. Upon the restoration of the normal supply, the electrical load is automatically re-transferred to the normal power supply. The normally required time delay functions are all included in the Timer Module package.

The transfer motor utilizes power from the source to which the electrical load is being transferred. The mechanism provides an optional mechanical interlock to prevent both switches from being closed at the same time. The OPT2600 also incorporates the basic actuating motor control switches, terminal blocks, and voltage sensing connection points for Utility Line sensing. Provision is also made for manual transfer of the power sources if necessary. The OPT2600 mechanism is a lever-operated device controlled by a 120 volt, 60 HZ 3 amps thermally protected unidirectional gear-motor.

The transfer motor drives a crank that in turn operates a lever arm. The lever, in turn, operates the two switch handles by means of guided roller assemblies. The roller assemblies are independently adjusted by either hexagon nuts or rollers. The travel position of the lever arm is detected by two micro switches, which in turn disconnect power to the transfer motor, when appropriate.

The dipswitch located on the TSC3A is used to set the load / no load setting (refer to TSC3A user manual). When switch location #3 is on, the system is configured for a load condition. When switch location #3 is off, the unit is configured for a no load condition.

This setting applies to the remote test switch and engine exercise option only. This setting allows for exercising the transfer switch under a loaded or a no load condition.

When testing or exercising the transfer switch under a load condition the switch will transfer to generator emergency power. When testing or exercising the transfer switch under a no load condition the switch will not transfer and stay in the normal power position. Please refer to the TSC3A user manual for a more advanced and detailed outlook on the TSC3A and its functionality.

## 1:2 **Relay Board Module:**

The relay board provides means for automatic transfer of a utility source of power to an emergency source of power, upon loss of the utility, and switches back again, upon restoration of the utility. The relay board has no built in delays for transfer. Any required delays must come from an external source (ie. engine controller, timer module).

### 1:2:1 Sensing:

The relay board module provides 2 types of voltage sensing:

#### i). Relay Coil Sensing:

When the slide switch, located on the relay module, next to the 8 pin octal socket, is in the ON position (position away from the octal socket), utility voltage sensing is provided by means of an on board relay coil. The relay coil characteristics set the pick up and drop out of the main utility source.

#### ii). Adjustable Voltage Sensing:

When the slide switch, located on the relay module, next to the 8 pin octal socket, is in the OFF position (position closest to the octal socket), the on board relay coil is bypassed, and voltage sensing is provide by an optional UL approved voltage sensing module, which plugs into the 8 pin octal socket. The adjustable voltage monitor is a single set-point voltage monitor. Input voltages 10% below the set-point range will cause the output contacts to de-energize causing a utility source failure. The adjustable voltage-sensing module recommended for use with the OPT2600-2 Automatic Transfer Switch is the Symcom 201-200-SP-T Rev5.20. The adjustable voltage-sensing module recommended for use with the OPT2600-3 Automatic Transfer Switch is the Symcom 201A.

## ADJUSTMENT PROCEDURE

Rotate the line voltage adjustment to the nominal line voltage feeding the transfer switch. The nominal line voltage can be measured between phase A and phase C of the line side inputs on the normal breaker. If the voltage is up to 10% below the adjustable voltage set point, and the LED on the monitor is illuminated, the adjustable voltage monitor is working properly. The voltage sensor can also be factory set to customer specifications. Please note that there will be a 3 second delay between emergency to normal transfer. This can be observed be a flashing LED on the monitor.

### 1:2:2 System Operation:

**WARNING: THE RELAY BOARD IS FACTORY SET FOR 12VDC APPLICATIONS. IF INSTALLING IN A 24VDC SYSTEM, TWO JUMPERS NEED TO BE CUT.**

The relay board module has provisions for 12 and 24 VDC operation. The relay board comes factory set for 12 VDC applications. Changing from 12 to 24 VDC will require cutting the 2 jumper wires located next to the 5-position header

## **2: INSTALLATION INFORMATION**

### 2:1 General

The basic OPT2600 transfer switch includes all control wiring connections. The electrical switchgear should be installed by a certified electrician, and all wiring to/from the unit should agree with all applicable electrical codes, standards, and practices.

### 2:2 Recommended Upstream Protection

When protected by a circuit breaker rated 600A maximum. This switch is suitable for use on a circuit capable of delivering not more than:

65,000A RMS SYMMETRICAL AT 240V  
35,000A RMS SYMMETRICAL AT 480V  
25,000A RMS SYMMETRICAL AT 600V

When protected by a class J, T or R fuse rated 600A maximum. This switch is suitable for use on a circuit capable of delivering not more than:

100,000A RMS SYMMETRICAL AT 240V  
100,000A RMS SYMMETRICAL AT 480V

May open circuit above 4,000A

Use copper or aluminum wiring at a minimum 75C rating for power terminals.

All electrical wiring connections have a recommended tightening torque. The following chart shows the required electrical tightening torque to allow safe operation.

Wiring Connections aluminum/copper	Connector Mounting Screws
300 IN-LBS	132 IN-LBS

Wire size range 3/0 to 500MCM copper and 4/0 to 500MM aluminum.

### 2:3 Open Type Transfer Switches:

Open type options allow transfer switches to be shipped with no enclosures. All open type UL approved transfer switch will be required to be placed in a minimum size enclosure to allow proper spacing between electrical components and the enclosure wall. The following chart shows the minimum required dimensions to allow the safe operation of these Switches.

Transfer Switch Amperage Rating	Enclosure Dimensions (Height x Width x Diameter)
600A	60 x 30 x 10

The transfer switch must be in accordance with the following requirements:

For models OPT2600-2-120/240V and OPT2600-3-208/240V

1. The minimum spacing requirements per UL-1008 must not be less than 1/4" through air and 3/8" over the surface of the insulating material. These measures must exist between any uninsulated live part and another uninsulated live part of opposite polarity, uninsulated grounded part other than the enclosure or any exposed metal part.
2. Not less than 1/2" measured over the shortest distance between any uninsulated live parts and the walls of the metal enclosure, including fittings for conduit or armored cable.

For models OPT2600-3-480V and OPT2600-3-600V

1. The minimum spacing requirements per UL-1008 must not be less than 3/8" through air and 1/2" over the surface of the insulating material. These measures must exist between any uninsulated live part and another uninsulated live part of opposite polarity, uninsulated grounded part other than the enclosure or any exposed metal part.
2. Not less than 1/2" measured over the shortest distance between any uninsulated live parts and the walls of the metal enclosure, including fittings for conduit or armored cable.

#### 2:4 Remote test switch installation:

An optional test switch may be installed which allows remote testing of the transfer switch. The purpose of the test switch is to simulate a utility power failure. The remote test switch would be connected between the test + and test - location on the terminal block. When the test + and test- contacts on the terminal block are closed, a relay energizes simulating a utility power failure. A test switch rated at a minimum of 1A should be used.

### 3: REPLACING PARTS

**WARNING: When replacing any parts of the mechanism, isolate the transfer switch from all possible sources of power.**

The OPT2600 transfer switch mechanism has been designed to allow all components to be accessible and readily removable from the front of the back panel.

Replacement parts should be identified with reference to the Parts List on page 10 and the Assembly Drawing on page 15. All parts are available direct from the factory. Be sure to state the model and serial number of the switch.

### 3:1 REPLACEMENT PARTS LIST

PARTS DESCRIPTION	Ref. No.	PARTS DESCRIPTION	Ref. No.
Inner Panel	1	Washer 1/2 " flat	39
Molded Case Switch	2	Washer 1/2" spring lock	40
Screw 1/4" - 20x3" round HD phillips	3	Nut 1/2"-20 Jam	41
Washer 1/4" spring lock	4	Screw 1/2"-20x 1 1/2"	42
Top Support	5	Bus bar assembly	43
Screw 10-24x1/2" pan head phillips	6	Screw 5/16"-18x1"	44
Washer #10 spring lock	7	Washer 5/16" spring lock	45
Washer #10 flat	8	Connector lug	46
Gear Motor	9	Neutral block	47
Screw 10-32x1/2" pan HD	10	Screw 1/4-20 x 5/8"	48
Crank	11	Washer 1/4" flat	49
Screw 1/4"-28x1/4" set	12	Insulator	50
Cam	13	Screw 1/4"-20 x 1/2"	51
Screw #6-32 x 1/2" flat HD	14	Limit switch spacer	52
Washer #6 Spring Lock	15	Nylon pad	53
Washer #6 flat	16	Limit switch insulator	54
Limit Switch Support	17	Nylon spacer (hand knob)	55
Screw #6-32x1/4"	18	Screw #10-32 x 1/2" flat HD	56
Limit Switch	19		
Screw #4-40x5/8"	20		
Washer #4 Spring Lock	21		
Washer #4 flat	22		
Actuator Carrier	23		
Guide rod	24		
Washer shoulder	25		
Springrip Fastener	26		
Spacer Nylon	27		
Screw #10-32x1"	28		
Nut #10-32 Hex	29		
Pivot support	30		
Arm	31		
Washer Nylon	32		
Spacer Nylon	33		
Washer 5/16" flat	34		
Nut 5/16-18 hex self locking	35		
Screw 5/16"-24x1"	36		
Hand Knob	37		
Spacer Nylon	38		

### 3:1 MAIN SWITCH REMOVAL AND REPLACEMENT

**WARNING: When replacing any parts of the mechanism, isolate the transfer switch from all possible sources of power.**

To remove the main normal or emergency switches, first electrically isolate the transfer switch from all power sources.

- a) Disconnect all cables and wiring from the switch terminals.
- b) Disconnect wiring to limit switches and motor and any tie-points on the top support.
- c) The top support complete with motor and operating mechanism can now be lifted clear after removing the eight top support screws (see mechanical assembly on page 14).
- d) After removing the buss bar from the breakers, the individual switches can now be readily unfastened and removed from the back panel.

Replacement is the reverse of the above procedure. Note when replacing the arm assembly, ensure that the switches are set one “off” and one “on” and that the rollers on the arm actuators equally straddle the switch operating levers. Please note that the roller assemblies may need to be independently adjusted when replacing breakers. The roller adjustments may be performed as follows:

1. To give maximum travel of the lever arm, position the crank block at a 90-degree angle in relation to the arm.
2. Using the breaker which is in the OFF position, push the white roller tight against the breaker lever. Securing the #10 screw (mechanical assembly reference # 28) with a screw driver, tighten the two #10 hex nuts (mechanical assembly reference # 29) closest to the roller against the actuator carrier bracket.
3. Confirming that the roller is tight against the switch lever, tighten the two #10 hex nuts farthest from the roller tight against the actuator carrier bracket
4. Manually transfer the switch to the opposite position. Repeat steps 1, 2 and 3 above.
5. Check adjustments and repeat if necessary.

### 3:2 MOTOR REMOVAL AND REPLACEMENT

**WARNING: When replacing any parts of the mechanism, isolate the transfer switch from all possible sources of power.**

- Electrically isolate the transfer switch from all power sources.
- Remove the top support as in section 3:1 steps a, b and c above .
- Loosen the set screw holding the crank to the motor shaft.
- Remove six screws securing the motor to the underside of the top support bracket (see mechanical assembly on page 14). The motor can now be removed.

Replacement is the reverse of the above procedure.

### 4: MANUAL TRANSFER OF MECHANISM

**WARNING: When performing a manual transfer of mechanism, isolate the transfer switch from all possible sources of power.**

PRECAUTION HAS TO BE TAKEN WHEN PERFORMING THIS TRANSFER: THE TRANSFER SWITCH MUST BE ISOLATED FROM ALL POSSIBLE SOURCES OF POWER.

The OPT2600 includes the suitable sensing circuitry for automatically transfer an electrical load to a stand-by power supply in the event of a drop or loss of voltage of any or all phases of the normal power supply. If for any reason the switch fails to transfer when the normal power supply fails, the user may manually transfer the switch by using the knob on the lever arm. Please confirm that the transfer switch is isolated from all power sources before manually transferring from the normal to emergency position. Significant force must be supplied to the lever arm knob to perform the transfer. When performing a mechanical transfer both breakers must be properly activated, this can be achieved by the presence of two clicks that will confirm a successful transfer. If the switch fails to transfer back to the normal position when the utility power is restored, manually transfer back to normal supply using the precautions described above. Confirm the proper shut down of the generator or manually shut down if required. The switch should only need to be transferred manually in the event of a failure within the OPT2600 controls. Please call technical support if any transfer failures are observed.

## **5: RECOMMENDED MAINTENANCE**

**WARNING: When performing any maintenance of the mechanism, isolate the transfer switch from all possible sources of power.**

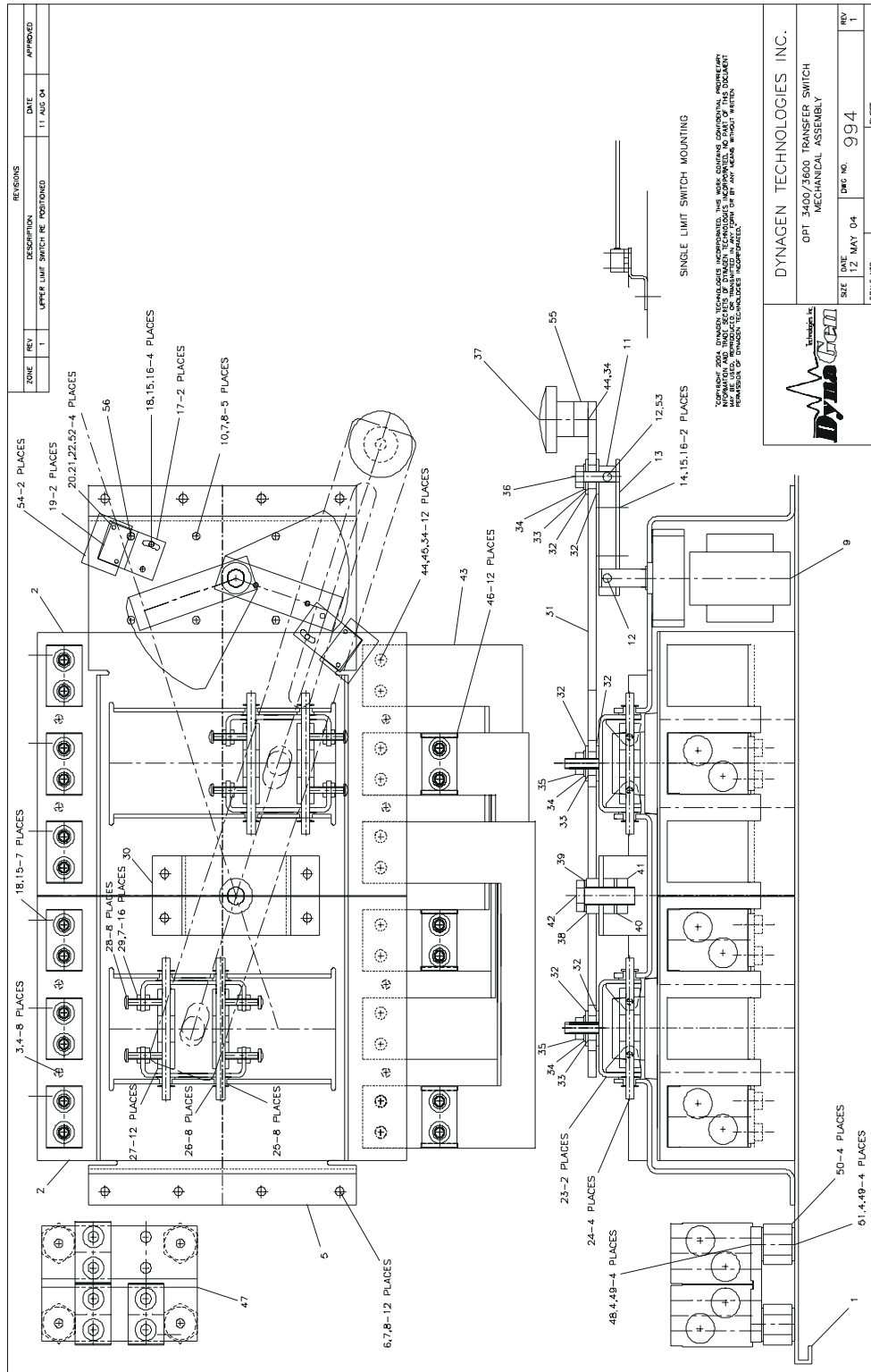
The OPT2600 transfer switch assembly has been designed to require minimum attention under all environmental conditions normally encountered. All sliding and bearing surfaces have a thin coating of grease applied at the factory. This thin coating minimizes accumulation of dust and grit at these locations. The gear-motor is also lubricated for the life of the unit, and requires no attention.

Periodically inspect all terminals (load, line and control), and all fasteners for tightness.

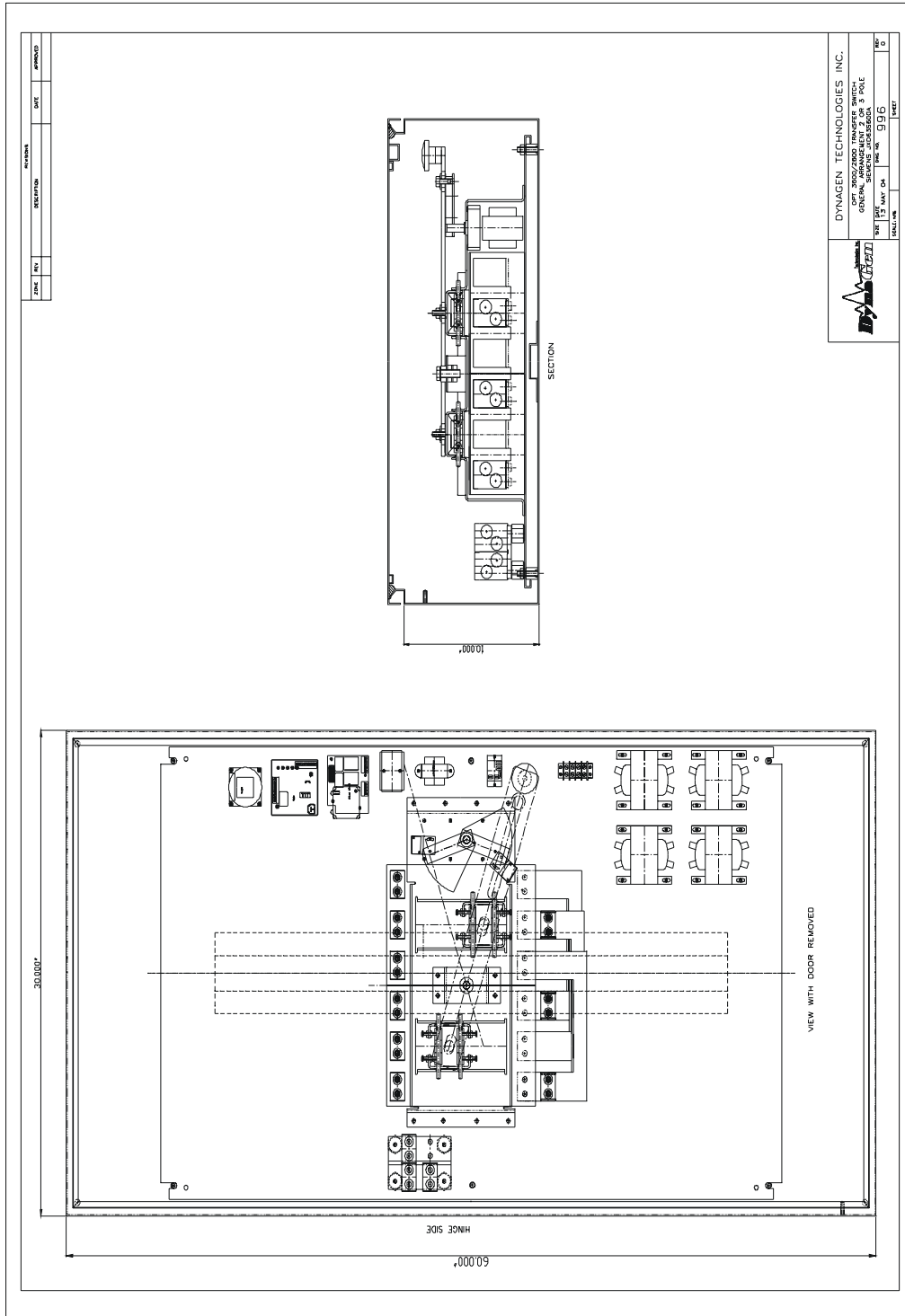
Test the transfer switch operation upon initial installation, in both the motor and manual modes. Periodically check for freedom of movement of the mechanism, hidden dirt or corrosion, and any excessive wear on the mechanical operating parts. Clean or replace parts when necessary.

All transfer switch parts are made of corrosion resistant material or is plated, coated or painted for corrosion protection.

# 6:1 OPT2600 MECHANICAL ASSEMBLY



# 6:2 OPT2600 GENERAL ARRANGEMENT







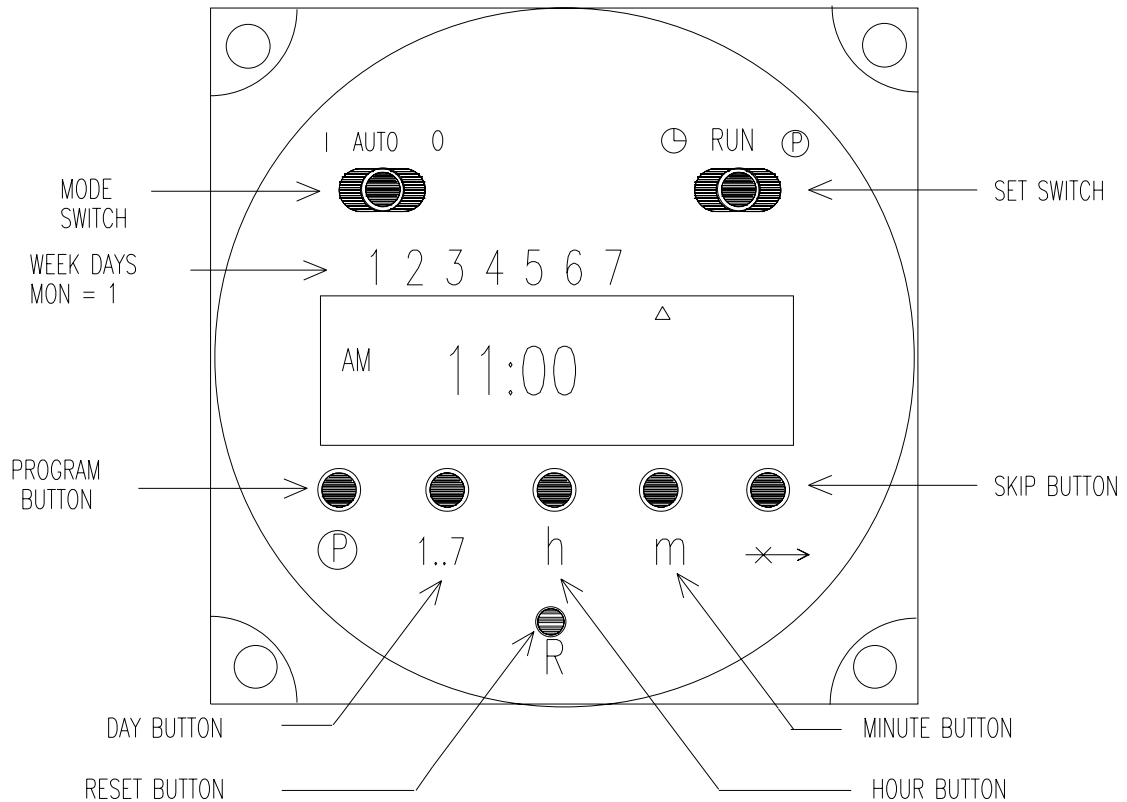




## **7: ENGINE EXERCISER**

### **Introduction**

The functions of the exerciser time clock are shown in the diagram below. The time clock has two slide switches with three positions: The switch in the upper right corner is a SET SWITCH used to set the present time and day for your locality, run the program, change an existing exercise cycle or start a new program. The MODE SWITCH located in the upper left corner can start the generator manually, exercise the generator automatically, or disable the exerciser function. The push buttons below the clock display are used to program the exercise day, time and duration. The SKIP BUTTON is used to ignore an "exercise" day. The RESET BUTTON initializes the time clock erasing any previous program.



## **Programming the Exerciser Time Clock**

The mode switch slider is in the **O** or "disable" position when packaged at the factory. The set switch is in the "run" position.

### **Use the following steps to program the exerciser time clock for a particular exercise day, time, and duration:**

1. Move MODE SWITCH to "auto" and the SET SWITCH to "run".
2. Press the RESET BUTTON using the tip of a pencil or pen. This operation will produce a blinking display showing "00:0" for the time and an arrow under the day 7 (Sunday).
3. Move the SET SWITCH slider to the left (clock icon) position so the present day and time can be set. A default time AM 12:00 appears in the display with an arrow under the day 7 or Sunday.
4. Press the DAY button (1..7) repeatedly until the arrow points to the actual day of the week.
5. Press the HOUR button (h) repeatedly until the actual time of day is displayed, such as AM 5:00 or PM 5:00.
6. Press the MINUTE button (m) repeatedly until the minute of the present hour is displayed, such as AM 5:30 or PM 5:30.
7. Move the SET switch slider to the "run" position. The present time is displayed with the clock colon ":" blinking in one-second intervals. The arrow appears continuously under the present day.
8. Move the SET switch slider to the "program" position (P in a circle). The default time for starting an exercise is AM 12:00. The day arrow is absent. A small 1 appears to the right of the time with a lamp symbol above the 1. The 1 (or odd number) indicates the start of an exercise or contact closure. The lamp symbol indicates that the exerciser contacts are closed.
9. Press the DAY button (d) repeatedly until an arrow appears under the desired exercise day (Monday = 1) for starting the exercise.
10. Press the HOUR button repeatedly until the desired time for beginning the exercise is displayed, such as AM 5:00 or PM 5:00.
11. Press the MINUTE button repeatedly until the minute of the hour for beginning the exercise is displayed, such as AM 5:30 or PM 5:30.

12. Press the PROGRAM button **once more** to set the day and time for ending the exercise. A default time AM 12:00 appears in the display. A small 2 appears to the right of the time. The lamp symbol is absent. The 2 (or even number) indicates the end of an exercise or open contacts. The absence of the lamp symbol indicates when the exerciser contacts will open.
13. Press the DAY button repeatedly until an arrow appears under the desired day for terminating the exercise (Monday = 1) as in step 9.
14. Press the MINUTE button repeatedly until the desired minute of the exercise termination hour is displayed, such as AM 5:40 or PM 5:40.
15. Move the slider on the SET switch to the "run" position. The exerciser time clock is now programmed to start the emergency generator at the desired day, time and for the desired duration.

**NOTE:** *It is possible to program one to eight "on - off" cycles or transitions for the following day combinations: One to eight "on-off" cycles any day of the week; One to eight "on-off" cycles Monday to Friday inclusive; One to eight "on-off" cycles both Friday and Saturday only; One to eight "on-off" cycles Monday to Saturday inclusive; One to eight "on-off" cycles Monday to Sunday inclusive; All day combinations can have any combination of "on -off" cycles. **Normally the exerciser time clock will only require one "on-off" cycle once per week.*** The programming steps given above describe how to exercise the generator once a week. **EXAMPLE:** Suppose that the desirable day and time for exercising the generator is Saturday at 5:00 AM. Move the slider of the SET SWITCH to the right (P in circle) position. Press the DAY BUTTON (1..7) repeatedly until the arrow appears under day 6. Press the HOUR BUTTON (h) followed by the MINUTE BUTTON repeatedly until the desired time <sup>AM</sup>5: 30 are displayed. The generator is to be shut down after exercising for 10 minutes. With the slider of the SET SWITCH still in the right (P in circle) position press the PROGRAM BUTTON **once**. The display will show a continuous default time of <sup>AM</sup> 12:00. The day arrow(s) disappears. The small 1 will change to a 2 and the lamp symbol disappears. Press the DAY BUTTON (1..7) again repeatedly until the day arrow appears under day 6. Press the HOUR BUTTON (h) followed by the MINUTE BUTTON again repeatedly until the desired time <sup>AM</sup>5: 40 are displayed. Return the SET SWITCH slider to the "run" position. The exerciser time clock is programmed to start the generator at 5:30 AM on Saturday morning and run for 10 minutes then shut down at 5:40 AM of the same day Saturday. Following this procedure, the generator can be exercised as frequently as desired.