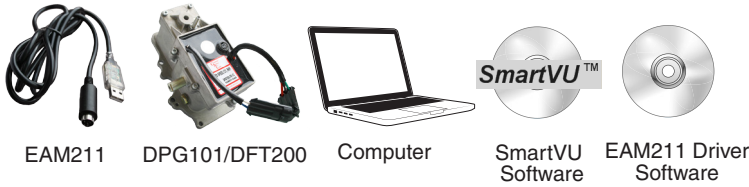


EAM211 Driver Installation

1 CONFIGURATION TOOLS

The EAM211 allows the DPG/DFT to communicate with a personal computer by USB. To do so you will need the following:



Both SmartVU and the EAM211 Drivers can be found on Governors America Corp.'s website at the following address:

<http://www.governors-america.com/products/governors/Digital/dpg-series/DPG101>

2 WINDOWS™ 7 & 8 DRIVER INSTALLATION

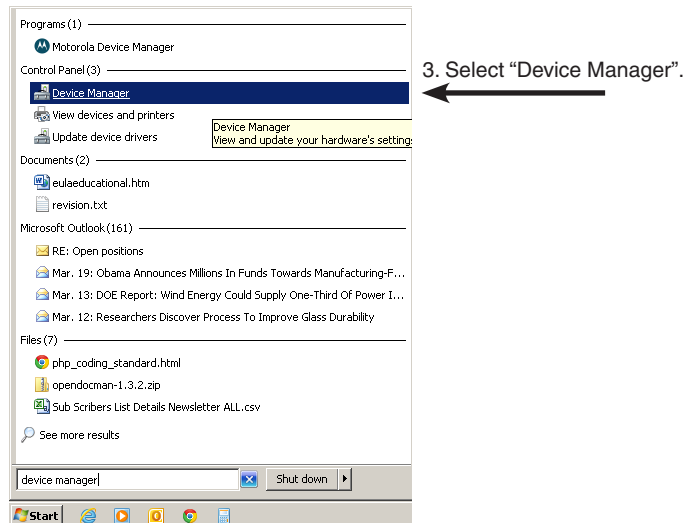
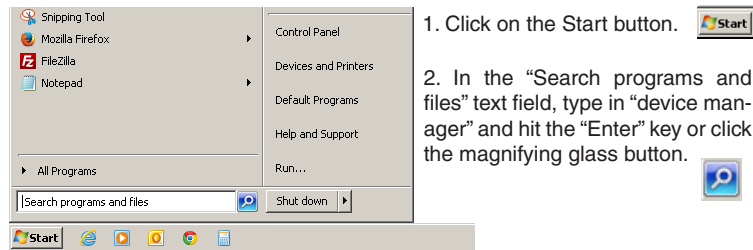
No USB driver installation is required for WINDOWS 7 or WINDOWS 8 users. WINDOWS should automatically recognize the EAM211. However, you still need to find out which COM port through which the EAM211 will communicate. If you are using WINDOWS 7 or WINDOWS 8 then continue to section 4 EAM211 COM PORT

3 WINDOWS™ XP DRIVER INSTALLATION

WINDOWS XP users are required to install USB drivers manually. If you are running WINDOWS XP then do the following:

OPENING DEVICE MANAGER

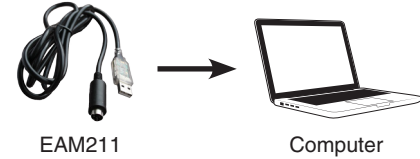
Installing the EAM211 device driver occurs through the Device Manager in Windows. The procedure below is the quickest way to navigate to the Device Manager.



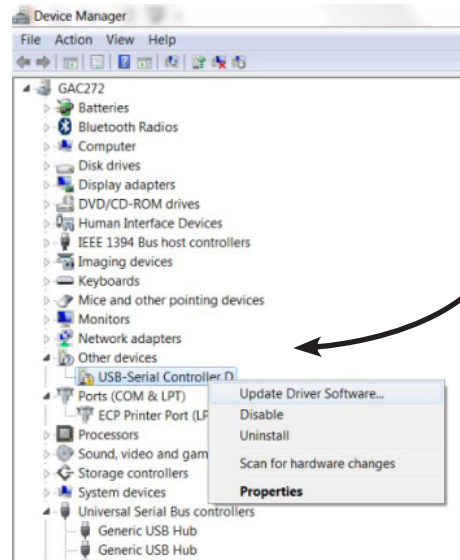
INSTALLING THE DRIVER

After selecting "Device Manager" from the Start Menu, the Device Manager window will appear.

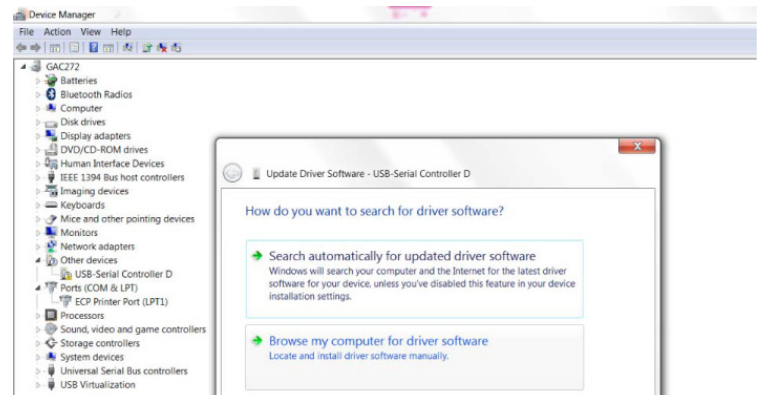
1. Plug the USB end of the EAM211 into the computer.



2. The EAM211 will appear in the Device Manager as a USB-Serial Controller.

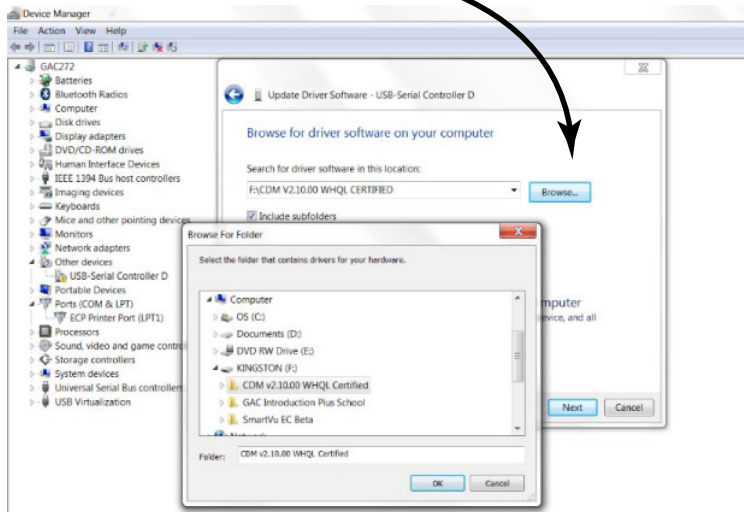


3. Right Click on "USB-Serial Controller" listed under "Other Devices".
4. A menu appears. Select "Update Driver Software".



5. The Update Driver Software menu appears. Select "Browse my computer for driver software".

- Select the "Browse" button.

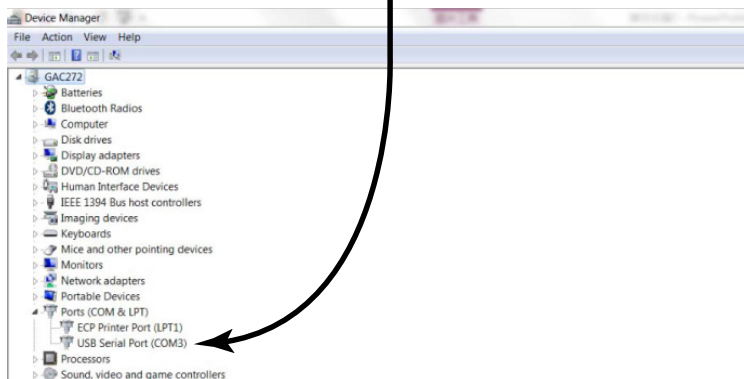


- Search for the folder where you downloaded and extracted the EAM211 zip file, select it, and click the "ok" button.
- On the "Update Driver Software" Menu select the "Next" Button.

4 EAM211 COM PORT

The EAM211's COM port number is required to communicate with SmartVU.

- In Device Manager, click on the triangle next to "Ports (Com & LPT)" to expand it. The EAM211 will now be recognized as a device with a specific COM port number. Note this number, its required to recognize the device in SmartVU.



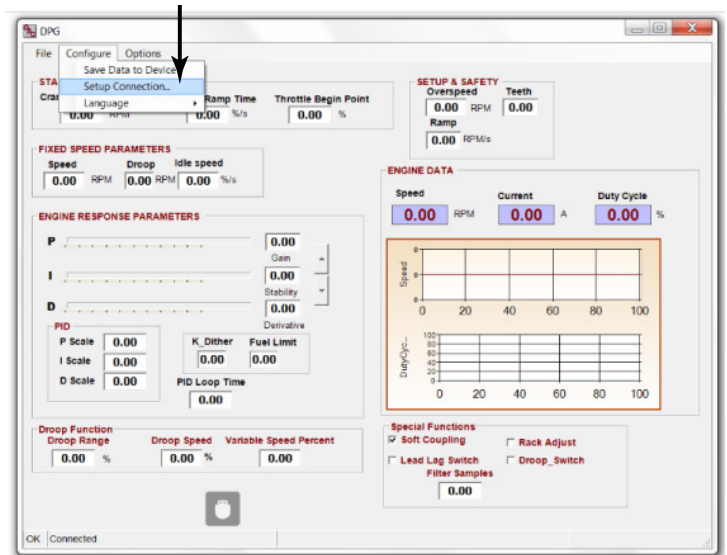
5 SMARTVU

Make sure the DPG101/DFT200 is plugged into the EAM211 which is in turn plugged into the computer loaded with SmartVU.

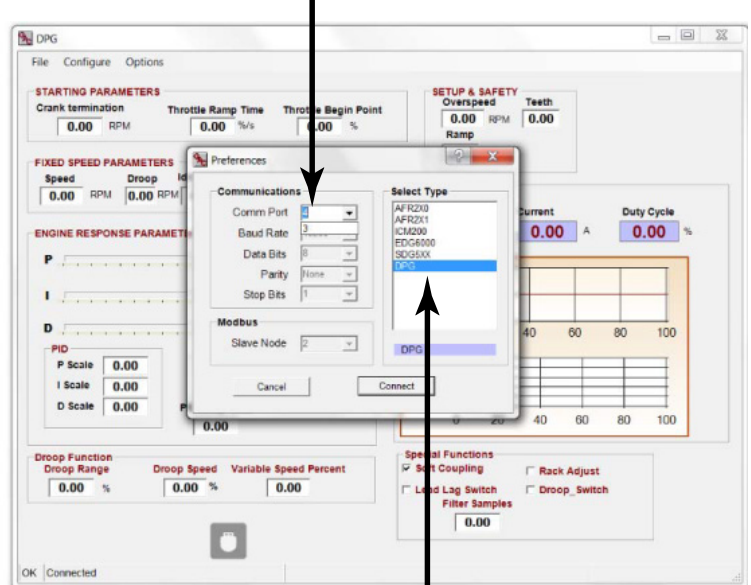


Load GAC's SmartVU software after downloading and installing it. Once the program is running, do the following to enable communication between SmartVU and the DPG/DFT.

- Click "Configure" from the main menu.
- Click "Setup Connection" from the drop down menu.



- Choose the "Comm Port" from the drop-down menu that you noted during section 4 EAM211 COM PORT.



- Select "DPG" from the products listed under "Select Type".
- Select "Connect".
- If the DPG/DFT is communicating with the computer properly, you will see this message at the bottom left of the main menu.

