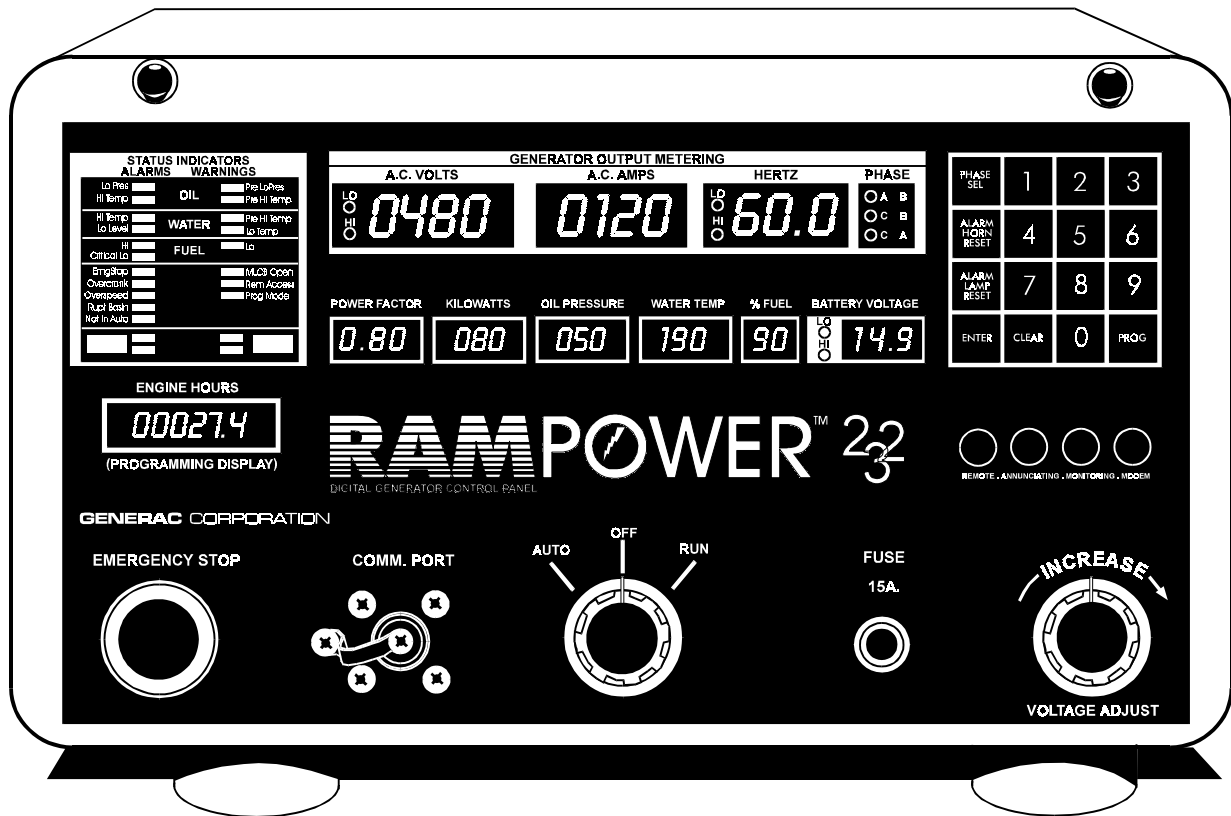


Digital Control Panel



RAMPOWER 232

Imagine monitoring and manipulating generator set parameters without standing in front of the control panel. The **RAMPOWER 232** control console offers the flexibility to access the emergency generator system via a modem, a laptop computer, a computer network or the front control panel. The control console is also capable of remotely starting and stopping the generator set.

This control console integrates all generator set and various automatic transfer switch functions into a single control system. Genlink™, a Windows™ based software program, and a self-programmable microprocessor allow improved reliability and tighter control of the power generator system.

Proactive serviceability is achieved using the **RAMPOWER 232** control console. Twenty-nine separate warning and alarm annunciations decrease the time of troubleshooting if a critical situation should arise.

Complete engine and alternator information is displayed simultaneously. The multiple LED readouts allow the operator to oversee the generator set parameters without toggling through each of the features.

With its simple design, user-friendliness and state of the art components, the **RAMPOWER 232** control console stands alone in a new era in generator set control consoles.

GENERAC®

POWER SYSTEMS

RAMPOWER 232 INDICATORS

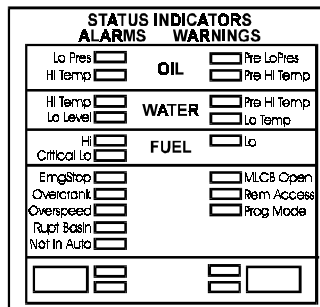
ALARM INDICATORS - Red LED

PROGRAMMABLE ALARM INDICATORS

- **Low Oil Pressure** - Engine Shut Down
- **High Radiator Water Temperature** - Engine Shut Down

FACTORY SET ALARM INDICATORS

- **Low Water Level** - Engine Shut Down
- **High Fuel Level**
 - May be programmed based on optional fuel percentage display.
- **Critical Low Fuel Level**
 - May be programmed based on optional fuel percentage display.
- **Ruptured Fuel Tank**
- **Emergency Stop Alarm**
- **Overcrank and Overspeed**
- **Auto Start Mode**
 - Panel switch is not set to the auto start mode.
- **Modem Communication Currently Active**



WARNING INDICATORS - Yellow LED

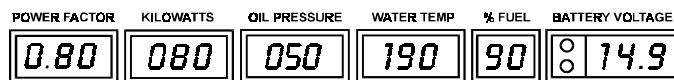
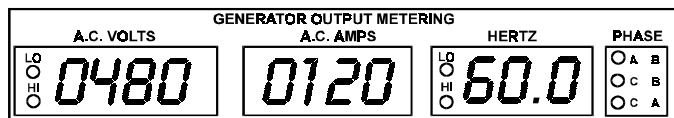
PROGRAMMABLE WARNING INDICATORS

- **Pre-Low Oil Pressure**
- **Low Radiator Water Temperature**
- **Pre-High Radiator Water Temperature**
- **Programming Display**

FACTORY SET WARNING INDICATORS

- **Low Fuel**
- **Control Panel in Programming Mode**
- **Circuit Breaker Open**
 - When Aux contacts on MLCB ordered

RAMPOWER 232 OUTPUT METERING

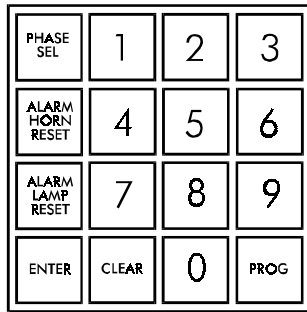


RAMPOWER²³²
DIGITAL GENERATOR CONTROL PANEL

- **AC Voltage Display**
 - Four digit display
 - Phase currently displayed is indicated by two red LEDs
 - Programmable high or low voltage shutdown displayed by two LEDs
- **AC Current Display**
 - Three selectable phases
- **Frequency Display**
 - Precise frequency generated to one tenth a hertz
 - Programmable high or low frequency shutdown displayed by two LEDs

- **Power Factor Display**
- **Power Output Display**
 - Measures the real power output
 - Power output is the sum of all three phases, taking the power factor into account
- **Oil Pressure Display**
 - Range is either 0 to 100 PSI or 0 to 7.03 kg/cm
- **Water Temperature Display**
 - Range is either 0 to 250F or -18 to 121C
- **Fuel Percentage Display**
 - Observes current fuel level (optional)
- **Battery Voltage Display**
 - Range is 0 to 51.2VDC
 - Programmable high or low battery voltage alarm displayed by one or two red LEDs
- **Data Memory Capabilities**
 - Stores trend analysis information
 - Also stores the last fifty alarm conditions
 - Archives generator set output values

RAMPOWER 232 TOUCH-SENSITIVE KEYPAD



- Numeric Keys
- Clear and Enter Key
- Phase Select Key
 - Three phases to choose from
- Alarm Lamp Reset Key
- Program Key
- Emergency Stop Push-Button
- Auto-Off-Start Switch
- Control Panel Fuse
 - 15A fuse
- Voltage Adjustment

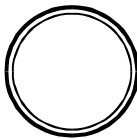


RAMPOWER 232 COMMUNICATION PORTS

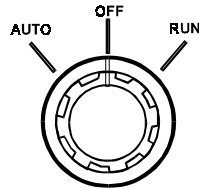
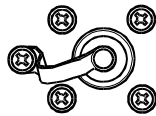
- Modem Port
 - Optional modem for remote monitoring
- RS485 Serial Port
 - Remote monitoring
 - 20 Light Annunciator (optional)
- RS232 Serial Port
 - Local access

GENERAC CORPORATION

EMERGENCY STOP

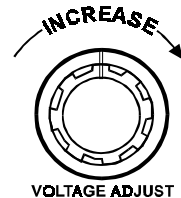


COMM. PORT

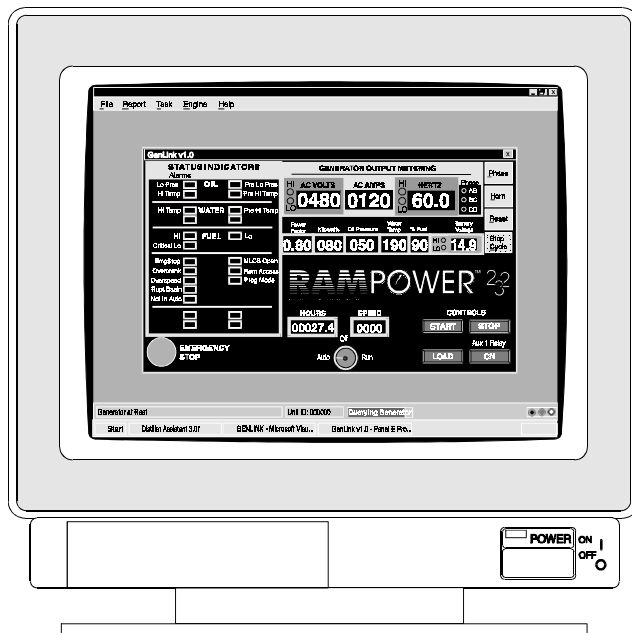


FUSE

15A.



RAMPOWER 232 IBM COMPATIBLE SOFTWARE



GENLINK™ SOFTWARE

- Windows™ based program
 - Monitor the genset remotely
 - Access all operating parameters and shutdowns
 - Monitors the 50 previous annunciator alarm conditions and operating parameters (high and low levels)
 - Remotely start/stop genset
 - Initiate transfer switch operations
 - Program in control panel dial out functions

RAMPOWER 232 CONTROL CONSOLE FEATURES

LED DISPLAYS

- AC Voltage
- AC Current
- Frequency
- Power Factor
- Power Output
- Oil Pressure
- Water Temperature
- Fuel Percentage (optional)
- Battery Voltage
- Run Time Hour-Meter

LED INDICATORS

- Selected Phase
- High and Low AC Voltage
- High and Low Battery Voltage
- High and Low Frequency
- Low and Pre-Low Oil Pressure
- High and Pre-High Water Temperature
- Low Water Level
- Low Water Temperature
- High, Low and Critical Low Fuel
- Emergency Stop
- Overcrank
- Overspeed
- Ruptured Basin
- Not in Automatic Mode
- Status of Main Line Circuit Breaker
- Remote Access
- Program Mode
- Four Additional LEDs

REMOTE START & STOP CAPABILITIES

- Laptop Connection
- RS485 Serial Port
- RS232 Serial Port

DATA MEMORY CAPABILITIES

- Trend Analysis on Engine Systems
- Last 50 Alarm Conditions
- Generator Set Output Values

TOUCH-SENSITIVE KEYPAD

- Numeric Keys 0-9
- Clear & Enter Keys
- Phase Select Key
- Alarm Lamp Reset/Lamp Test Keys
- Program Key

EMERGENCY STOP PUSH-BUTTON

COMMUNICATION PORTS

- RS485 Serial Port
- RS232 Serial Port
- Optional Modem Port (Telco)

3 POSITION SWITCH (AUTO/OFF/RUN)

CONTROL FUSE

FRONT PANEL VOLTAGE ADJUSTMENT

NFPA ALARM PACKAGE - NFPA 110

OVER and UNDER VOLTAGE

OVER and UNDER FREQUENCY

IBM PC COMPATIBLE SOFTWARE

SELF-PROGRAMMABLE MICROPROCESSOR

WIRING HARNESS FOR ELECTRICAL CONNECTIONS

GENERAC'S STANDARD INTERNAL WIRING

VIBRATION ISOLATORS

NEMA 1 ENCLOSURE

ELECTROSTATICALLY APPLIED POLYESTER POWDER PAINT

RAMPOWER 232 OPTIONAL ACCESSORIES

- Over Current Relay
- Locking Voltage Adjust Potentiometer
- Modem
- Windows™ based Genlink™ Software
- 20 Light Remote Annunciator
- 100 dBA Alarm Horn
- Oil Temperature Gauge
- High and Pre-High Oil Temperature
- Electronic Fuel Level Indication

GENERAC CORPORATION • P.O. BOX 8 • WAUKESHA, WI 53187

414/544-4811 • FAX 414/544-4851
