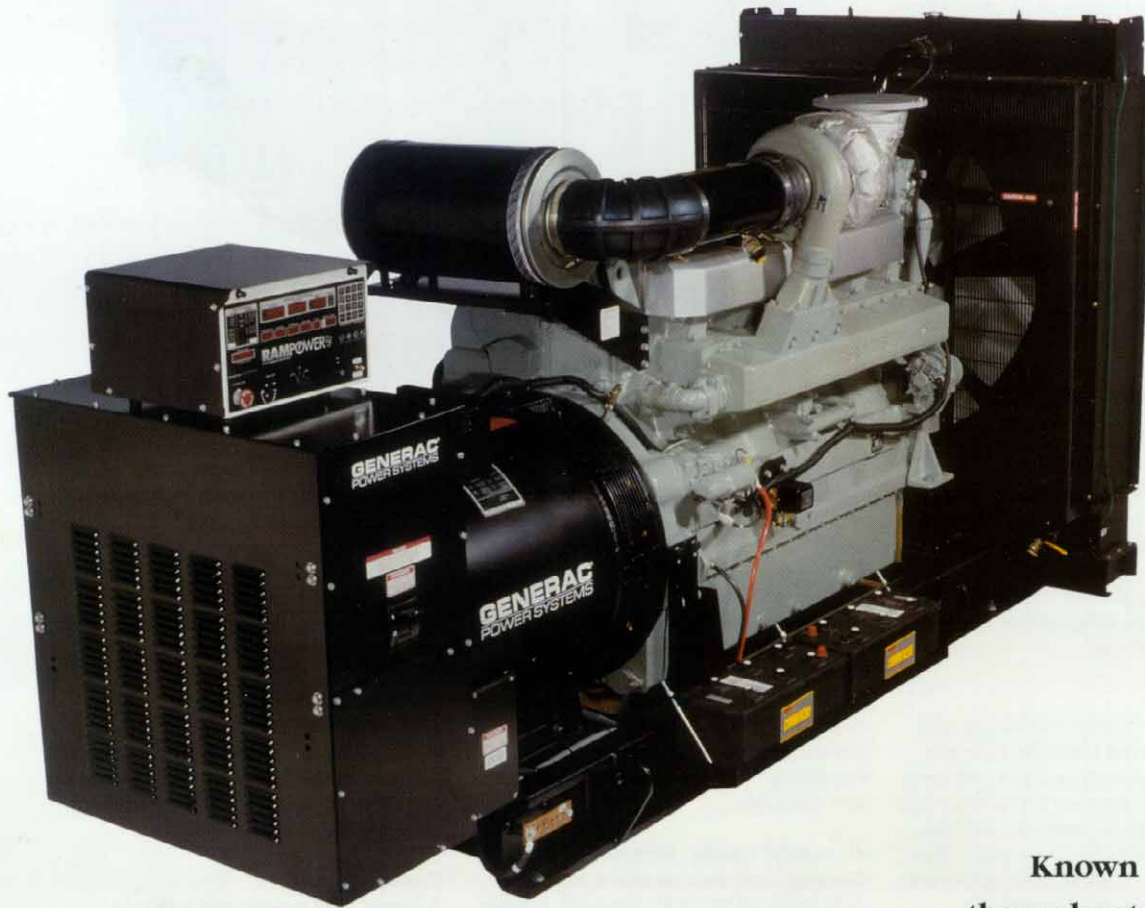


GENERAC[®]

POWER SYSTEMS



Known throughout the industry for its innovative power generation gensets and accessories, Generac is proud to offer an increased range of diesel gensets up to 1020kW.

This range of product reflects Generac's focus on compact, functional design. Maximization of available power is achieved by matching alternator and engine designs. The following kW sizes are currently available: 400kW, 500kW, 625kW, 800kW and 1020kW. This extended line of Generac Power Systems is sold and supported by the same network of reliable distributors.

400-1020kW

F E A T U R E S

Modern Engine Technology

The whole range of Generac large generators is based around modern, fuel efficient, four stroke industrial engines giving maximum performance and life for the generating set.

Electronic Isochronous Governor

Controls engine speed to give a constant frequency, steady state speed regulation is better than 0.5% from no-load to full-load. Gives optimum transient frequency response on heavy load application and rejection.

Digital Voltage Regulator

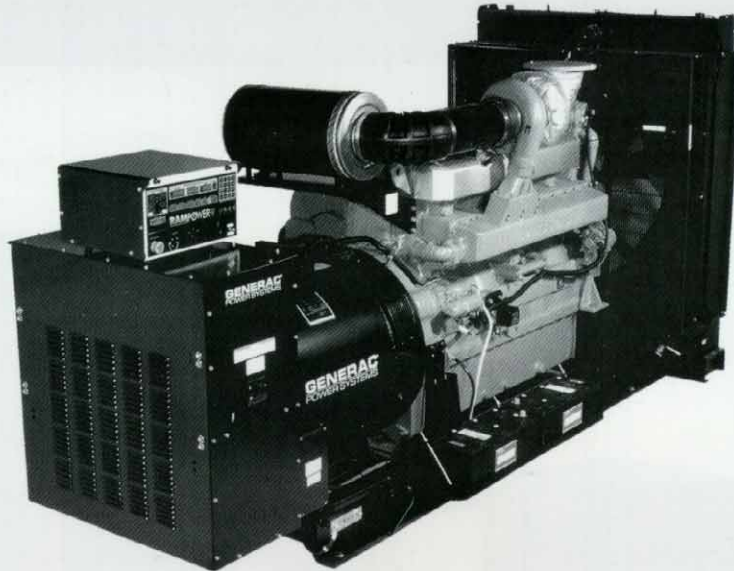
Each generator features a maintenance-free encapsulated digital voltage regulator that provides 0.25% regulation, adjustable volts/hertz underspeed protection, three phase RMS sensing, paralleling, overexcitation and overvoltage protection as standard.

Permanent Magnet Generator (PMG) Excitation

All Generac generators within this range have PMG excitation as a standard feature. The PMG excitation provides superior performance during transient load conditions and with non-linear loads (such as rectifier, UPS and electronic motor starter loads) The AVR supplied with the PMG option features three phase sensing.

Control System

Comprehensive engine monitoring and control facilities are available from the various control panels available, all units include - low oil pressure protection, high coolant temperature protection and low coolant level detection. Overspeed, start-failure and loss of speed sensing are also standard. All units are arranged for automatic or manual operation with cyclic cranking for reliable operation. Higher specification panels include digital metering, pre alarms and under/over frequency and voltage protections.



Generator battery monitoring is also available. All control panel options are easily interchangeable and upgradeable.

Communication Facilities

Generac's latest range of innovative control systems include industry standard RS-232 and RS-485 serial communications using the Generac Genlink™ remote communications protocol. Optional modem communication facilities and remote Rampower™ communication software is also available.

Automatic Transfer Switches

Generac manufactures and supplies a wide range of UL1008 Automatic Transfer Switches rated from 100 to 2600 Amps. These units are available with sophisticated features such as in-phase monitoring, digital control and accurate automatic exercising of the standby system.

Serviceability

All service points are brought out to the perimeter of the frame for easy access and maintenance.

Base Tank Option

UL listed above ground base-tanks, in both single and double-wall construction are available for all models.

Vibration Isolation

Adjustable rubber anti-vibration mounts are supplied as standard, when correctly adjusted better than 80% isolation can be achieved. For greater isolation optional spring type AVM's are available.

Cooling System

A closed loop pressurized system is employed, with internal stabilizing tank. Rusting, oxidization and fluid acidity are therefore minimized. All units are shipped with 45°C (113°F) ambient temperature rated radiator.

Generac's expanded range of power production now extends to 1020kW.

GENERAC[®]
POWER SYSTEMS

P.O. Box 8
Waukesha, WI • 53187
T(414) 544-4811
F(414) 544-0770

Proudly serving industry since 1959 - www.generac.com

Your local distributor: