

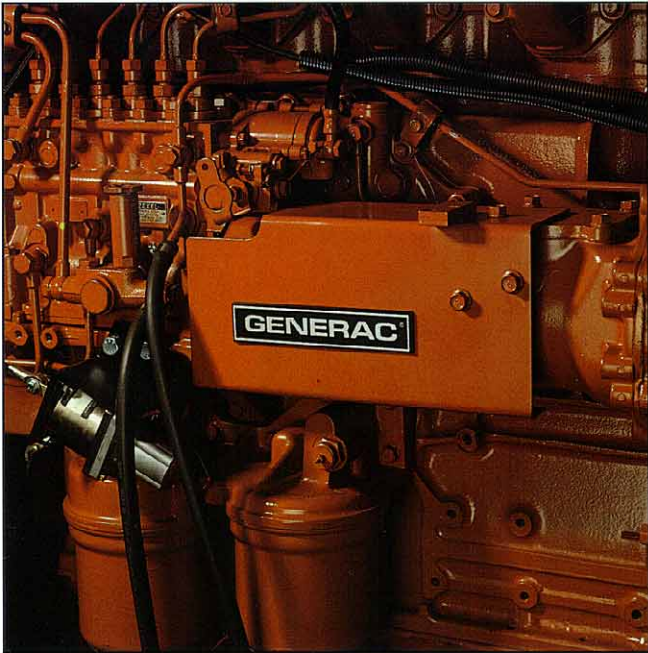
INDUSTRIAL ENGINES

*Designed for
Power Generation*



GENERAC[®]
POWER SYSTEMS

Generac Means Powerful Industrial Engines

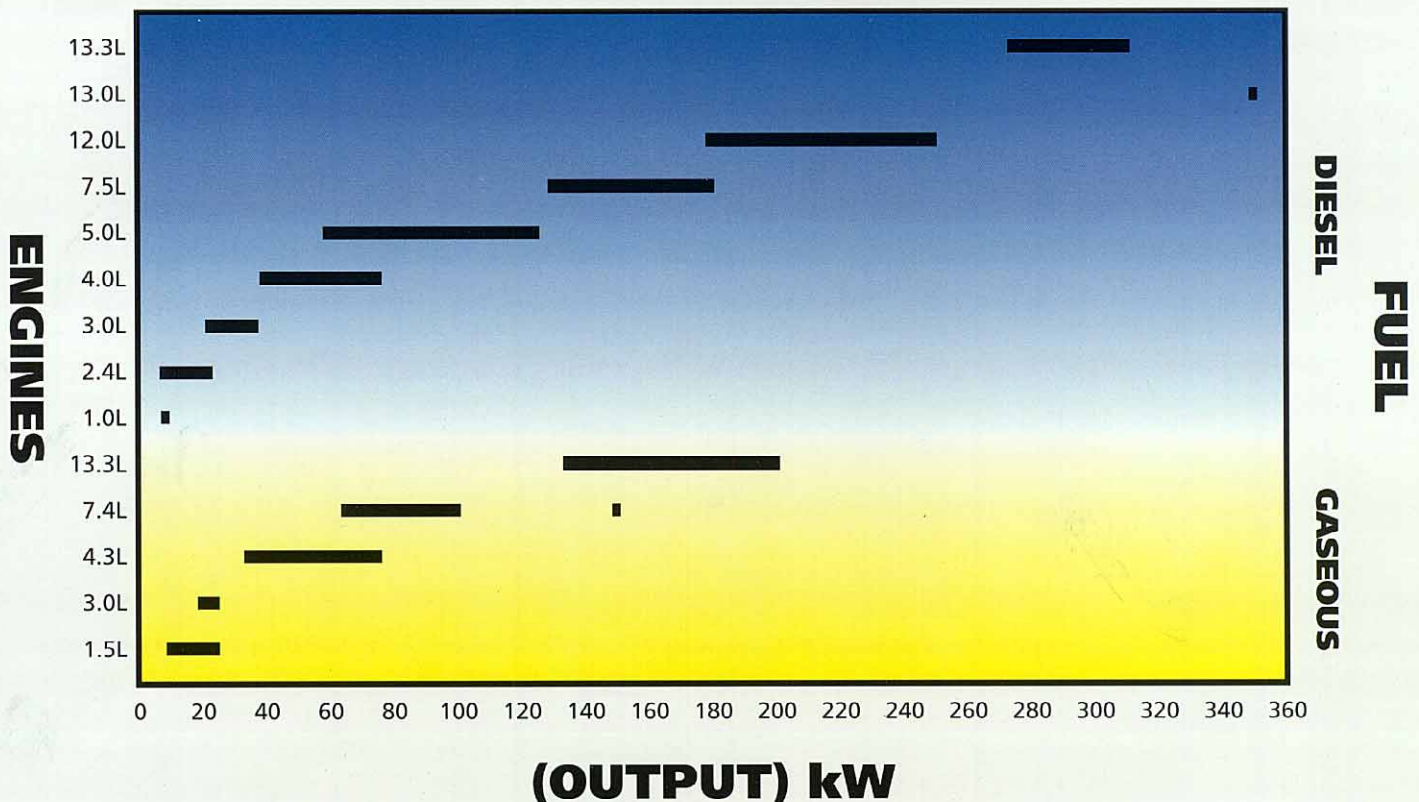


Generac's reputation for quality is backed by over five decades of stable growth. Quality is the cornerstone of our corporate culture. It is an attitude which permeates all areas of Generac, from the boardroom to the stockroom.

We set higher standards than the industry requires because it is our goal to provide superior power systems.

Because of this attitude, and our attributes which follow it, Generac is commonly known throughout the industry as The Reliable Ones.

Generac's Wide Range of POWER



Performance

The Generac series of engines has earned its reputation throughout the world by successfully operating under extremely demanding conditions. We have firsthand experience providing reliable power solutions time and time again. When you buy Generac you are buying quality and in turn getting performance - dependable performance - every time.

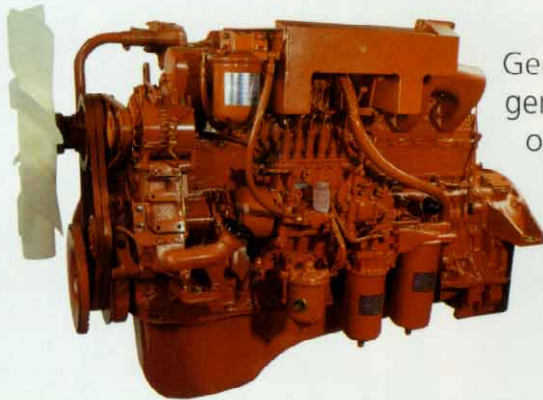


Custom Design

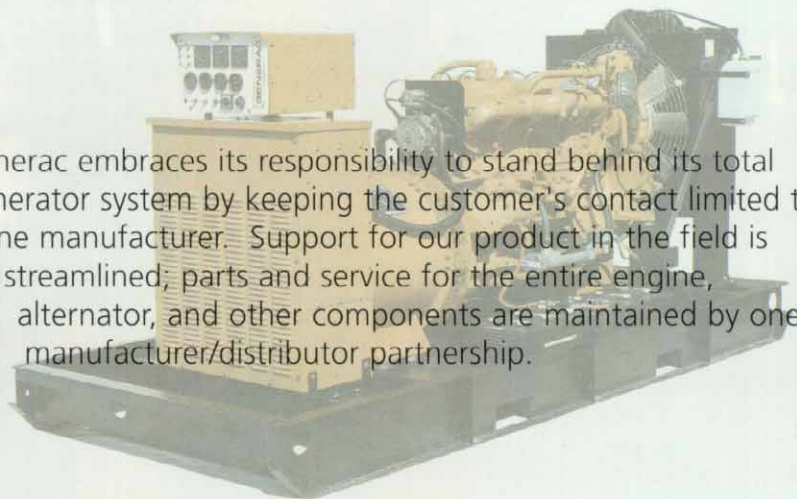
Generac engines are not "off the shelf" engines simply bolted to alternators. Great care is given in every phase of the design and manufacturing process to offer the quality and reliability you have come to expect. These engines are customized to deliver the optimal performance for the electrical power generation level intended. The results are a series of engines with efficient operation unparalleled in the industry.



Single Source Responsibility

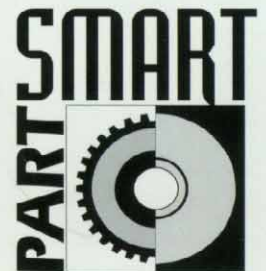


Generac embraces its responsibility to stand behind its total generator system by keeping the customer's contact limited to one manufacturer. Support for our product in the field is streamlined; parts and service for the entire engine, alternator, and other components are maintained by one manufacturer/distributor partnership.

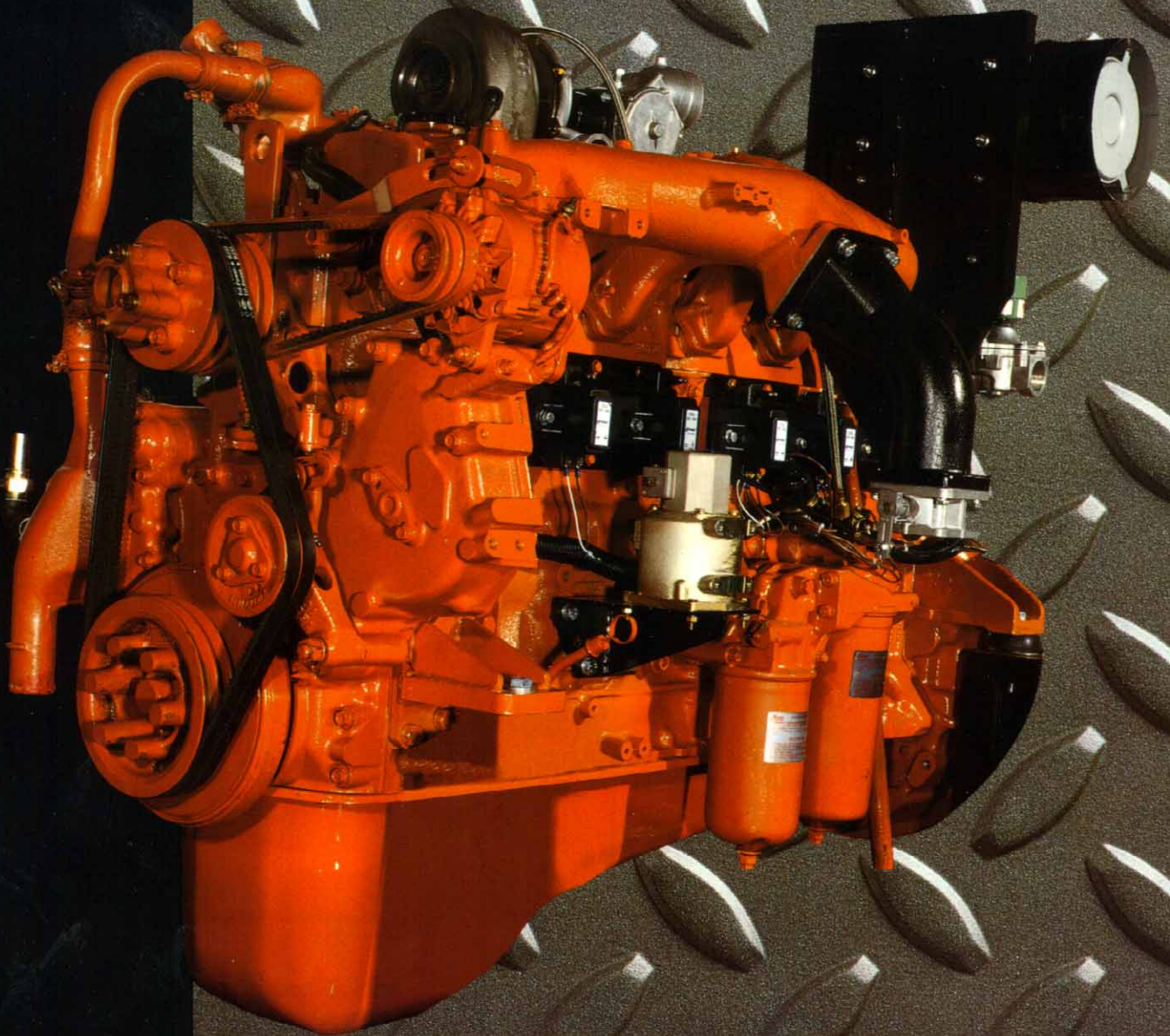


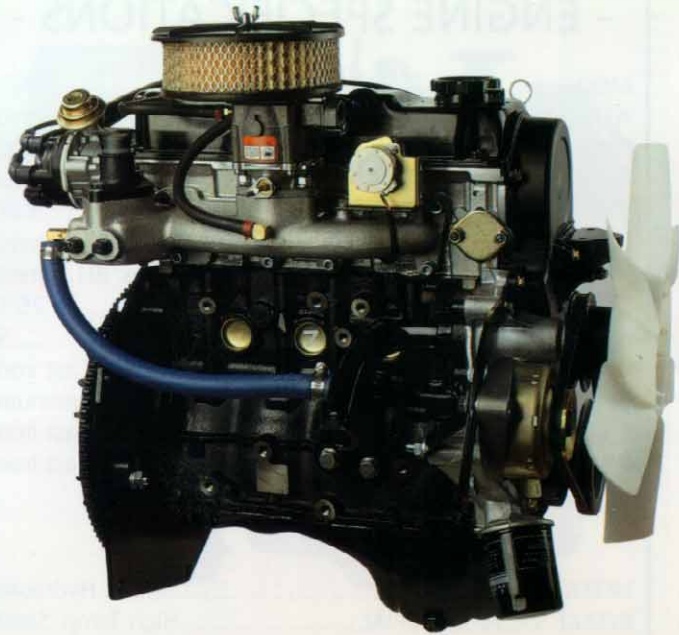
Parts & Service Network

Generac has established a worldwide parts and service network that carries forward our quality commitment to the field. Through this network, parts and service are available around the clock in order to respond to any emergency. Our distributor's technicians are factory-trained to ensure their ability to maintain our rigid quality requirements. Finding the correct replacement part is now as simple as a few mouse clicks with the Part Smart CD-ROM. It lists all maintenance and replacement parts for every model ever made.



GASEOUS FUELED ENGINES





- ENGINE SPECIFICATIONS -

MODEL	15GN
ASPIRATION	Naturally Aspirated
RPM - 15GN (10kW)*	1800
- 15GN (20kW & 25kW)*	3600
CYLINDERS	4, In-line
DISPLACEMENT	1.5L
BORE	3.00 in. (76.2 mm)
STROKE	3.23 in. (82.1 mm)
COMPRESSION RATIO	9:01
NUMBER OF MAIN BEARINGS	5
CYLINDER HEAD	Aluminum
PISTONS	Aluminum
CYLINDER BLOCK	Cast Iron
CRANKSHAFT	Nodular Cast Iron

- VALVES -

LIFTER TYPE	Solid
INTAKE VALVE MATERIAL	High Temp. Steel
EXHAUST VALVE MATERIAL	High Temp. Steel

- ENGINE GOVERNOR -

ELECTRONIC	Standard
------------------	----------

- LUBRICATION SYSTEM -

OIL PUMP TYPE	Gerotor
OIL FILTER	Full Flow
CRANKCASE CAPACITY W/FILTER	3.3L

- COOLING SYSTEM -

COOLANT CAPACITY	7.6L (2 gal.)
COOLANT FLOW - 15GN (10kW)	9.2 GPM
- 15GN (20kW & 25kW)	9.8 GPM

- MAXIMUM COMBUSTION AIR REQUIREMENTS -

CFM AT RATED POWER - 1800 RPM	41
- 3600 RPM	82
AIR CLEANER	Pleated Paper

- EXHAUST SYSTEM -

MAXIMUM BACK PRESSURE	5.0Kpa (1.5" Hg)
EXHAUST DIAMETER	1 1/2 NPT Female

- FUEL SYSTEM -

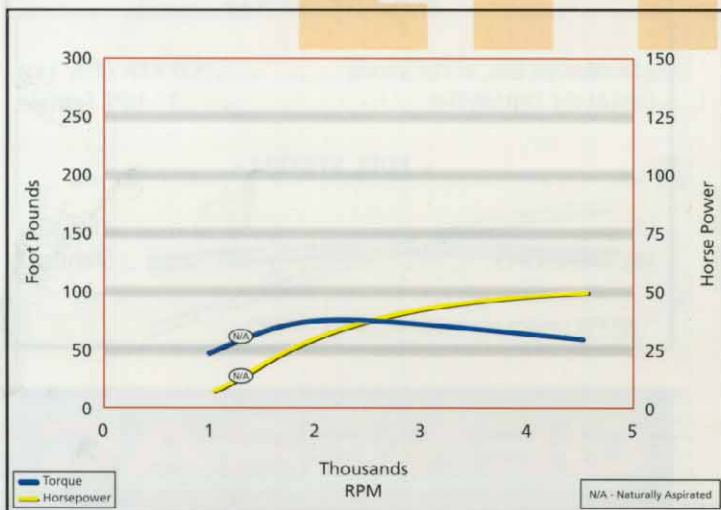
LP	Optional
NATURAL GAS	Standard

* All kW ratings are based on LP fuel system

Generac's smooth & powerful 1.5 liter naturally aspirated gaseous fueled, 4-cylinder engine supplies the power for our 10kW, 20kW and 25kW standby generators.

This "State of the Art" engine provides many long-life features, including:

- Cross flow design
- Hardened valve seats
- Aluminum head
- Overhead cam design

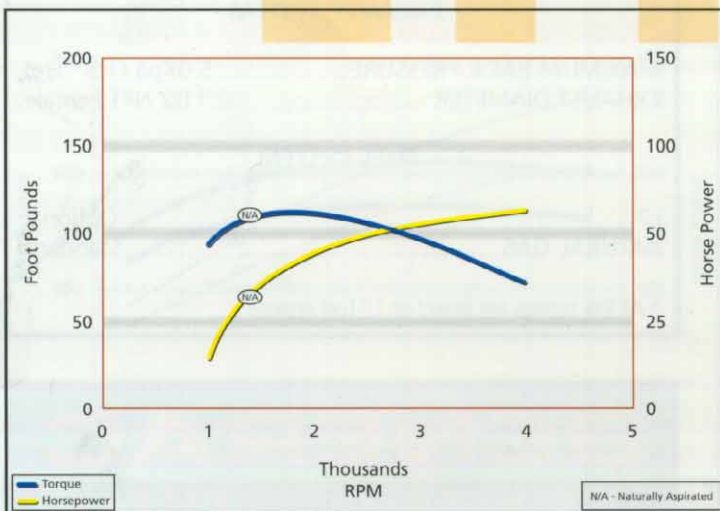




The 4-cylinder, 3.0 liter gaseous fueled engine is a proven workhorse. This engine powers our 20kW and 25kW generators.

Long-life features are combined with modern technology:

- Sintered powdered-metal exhaust valve seat inserts for enhanced durability
- Pistons have improved wear and noise reduction due to high silicon content
- State of the art engine sealing system



- ENGINE SPECIFICATIONS -

MODEL.....30GN
 ASPIRATION.....Naturally Aspirated
 RPM - 30GN (20kW & 25kW)*1800
 CYLINDERS.....4, In-Line
 DISPLACEMENT.....3.0L
 BORE.....4.00 in. (101.6 mm)
 STROKE.....3.60 in. (91.5 mm)
 COMPRESSION RATIO.....9.25:1
 NUMBER OF MAIN BEARINGS.....5
 CYLINDER HEAD.....Cast Iron
 PISTONS.....Aluminum
 CYLINDER BLOCK.....Cast Iron
 CRANKSHAFT.....Nodular Cast Iron

- VALVES -

LIFTER TYPE.....Hydraulic
 INTAKE VALVE MATERIAL.....High Temp. Steel
 EXHAUST VALVE MATERIAL.....High Temp. Steel

- ENGINE GOVERNOR -

ELECTRONIC.....Standard

- LUBRICATION SYSTEM -

OIL PUMP TYPE.....Gerotor
 OIL FILTER.....Full Flow
 CRANKCASE CAPACITY W/FILTER.....3.8L (4 qts.)

- COOLING SYSTEM -

COOLANT CAPACITY.....8.5L (2.2 gal.)
 COOLANT FLOW/MIN.....85L (27.3 gal.)

- MAXIMUM COMBUSTION AIR REQUIREMENTS -

CFM AT RATED POWER - 1800 RPM.....81
 AIR CLEANER.....Pleated Paper

- EXHAUST SYSTEM -

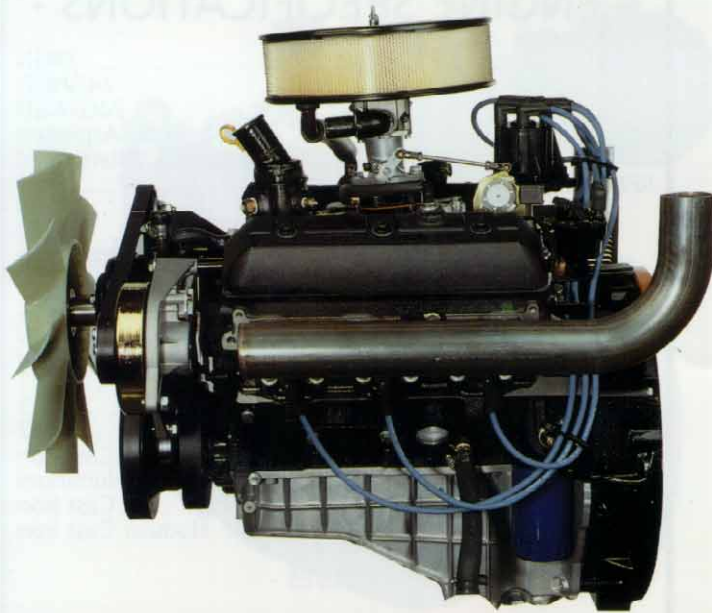
MAXIMUM BACK PRESSURE.....5.0 KPA (1.5" Hg)
 EXHAUST DIAMETER.....2" NPT Female

- FUEL SYSTEM -

LP.....Optional
 NATURAL GAS.....Standard

* All kW ratings are based on LP fuel system

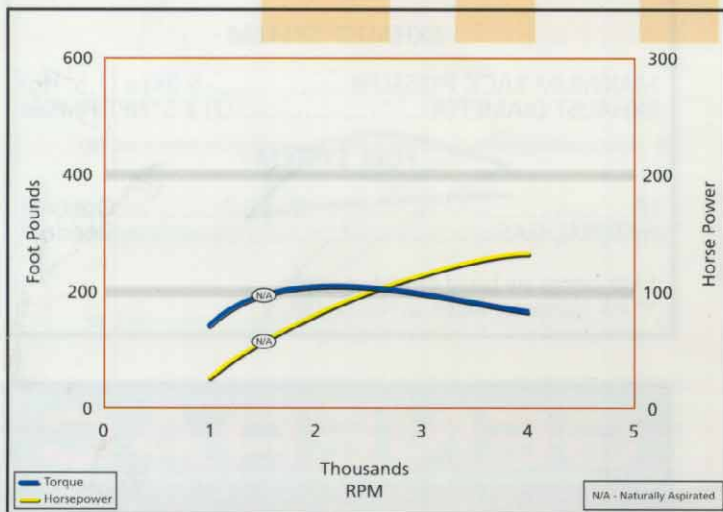
GENERAC®
 POWER SYSTEMS



Generac's 4.3 liter V-6 industrial gaseous fueled engine features superior power to size and weight ratios. This engine supplies the power for our 35kW, 45kW, 60kW and 75kW generators.

This "State of the Art" engine provides many long-life features, including:

- Roller valve lifters offer reduced friction and improved fuel economy
- Counter rotating balance shaft offers smooth performance and noise level
- Cast aluminum oil pan for increased strength and noise reduction



- ENGINE SPECIFICATIONS -

MODELS	43GN 43GNGD
ASPIRATION	Naturally Aspirated
RPM - 43GN (35kW & 45kW)*	1800
- 43GNGD (60kW)*	2300
- 43GNGD (75kW)*	3000
CYLINDERS	6, 90° V
DISPLACEMENT	4.3L
BORE	4.00 in. (101.6 mm)
STROKE	3.48 in. (88.4 mm)
COMPRESSION RATIO - 43GN	9.40:1
- 43GNGD	9.40:1
NUMBER OF MAIN BEARINGS	4
CYLINDER HEAD	Cast Iron
PISTONS	Aluminum
CYLINDER BLOCK	Cast Iron
CRANKSHAFT	Nodular Cast Iron

- VALVES -

LIFTER TYPE	Hydraulic
INTAKE VALVE MATERIAL	High Temp. Steel
EXHAUST VALVE MATERIAL	High Temp. Steel

- ENGINE GOVERNOR -

ELECTRONIC	Standard
------------------	----------

- LUBRICATION SYSTEM -

OIL PUMP TYPE	Gerotor
OIL FILTER	Full Flow
CRANKCASE CAPACITY W/FILTER	4.25L (4.5 qts)

- COOLING SYSTEM -

COOLANT CAPACITY	19L (5 gal.)
COOLANT FLOW/MIN	90L (24 gal.)

- MAXIMUM COMBUSTION AIR REQUIREMENTS -

CFM AT RATED POWER - 1800 RPM	116
- 2300 RPM	148
- 3000 RPM	189

AIR CLEANER	Pleated Paper
-------------------	---------------

- EXHAUST SYSTEM -

MAXIMUM BACK PRESSURE	5.0Kpa (1.5" Hg)
EXHAUST DIAMETER	(2) 2.5" NPT Female

- FUEL SYSTEM -

LP	Standard
NATURAL GAS	Optional

* All kW ratings are based on LP fuel system

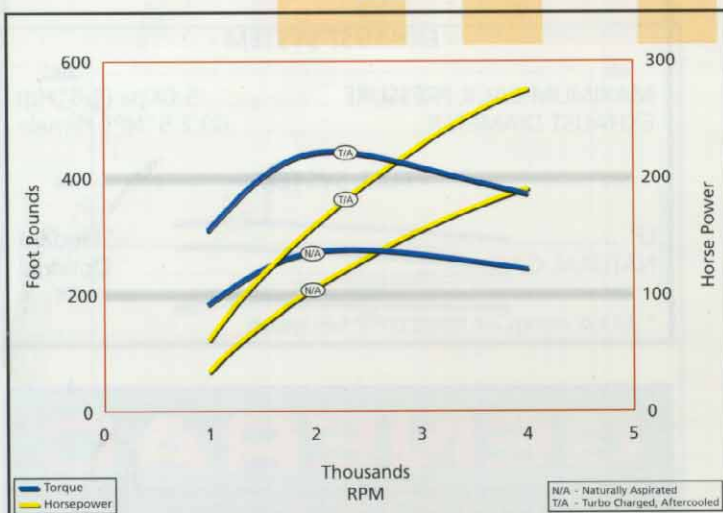
GENERAC®
POWER SYSTEMS



Generac's 7.4 liter, V-8 gaseous fueled engine supplies the power for our 65kW, 85kW, 100kW and 150kW standby generators. The engine for the 85kW, 100kW and 150kW system operates at a higher RPM, allowing greater horsepower from the engine.

This rugged engine has proven itself many times over in demanding field applications. Special engine features include:

- High strength, high silicon content cast aluminum pistons
- Hydraulic roller lifter camshaft offers reduced friction and improved performance
- Sintered iron exhaust valve seat inserts



- ENGINE SPECIFICATIONS -

MODELS	74GN 74GNGD 74GTAGD
ASPIRATION - 74GN/74GNGD	Naturally Aspirated
- 74DTAGD	Turbo Charged, Aftercooled
RPM - 74GN (65kW* & 100kW**)	1800
- 74GNGD (85kW)*	2300
- 74GNGD (100kW)*	3000
- 74GTAGD (150 kW)*	2700
CYLINDERS	8, 90° V
DISPLACEMENT	7.4L
BORE	4.25 in. (108.0 mm)
STROKE	4.00 in. (101.6 mm)
COMPRESSION RATIO	8.5:1
NUMBER OF MAIN BEARINGS	5
CYLINDER HEAD	112
PISTONS	Cast Iron
CYLINDER LINERS	Aluminum
CYLINDER BLOCK	Cast Iron
CRANKSHAFT	Nodular Cast Iron

- VALVES -

LIFTER TYPE	Hydraulic
INTAKE VALVE MATERIAL	High Temp. Steel
EXHAUST VALVE MATERIAL	High Temp. Steel

- ENGINE GOVERNOR -

MECHANICAL	Standard
ELECTRONIC	Optional

- LUBRICATION SYSTEM -

OIL PUMP TYPE	Gerotor
OIL FILTER	Full Flow
CRANKCASE CAPACITY W/FILTER	4.7L (5 qts.)

- COOLING SYSTEM -

COOLANT CAPACITY	20L (5 gal.)
COOLANT FLOW/MIN. - 74GN	90L (24 gal.)
- 74GNGD	189L (50 gal.)

- MAXIMUM COMBUSTION AIR REQUIREMENTS -

CFM AT RATED POWER - 1800 RPM (65kW)	200
- 1800 RPM (100kW)	363
- 2300 RPM (85kW)	255
- 2700 RPM (150kW)	556
- 3000 RPM (100kW)	333
AIR CLEANER	Pleated Paper

- EXHAUST SYSTEM -

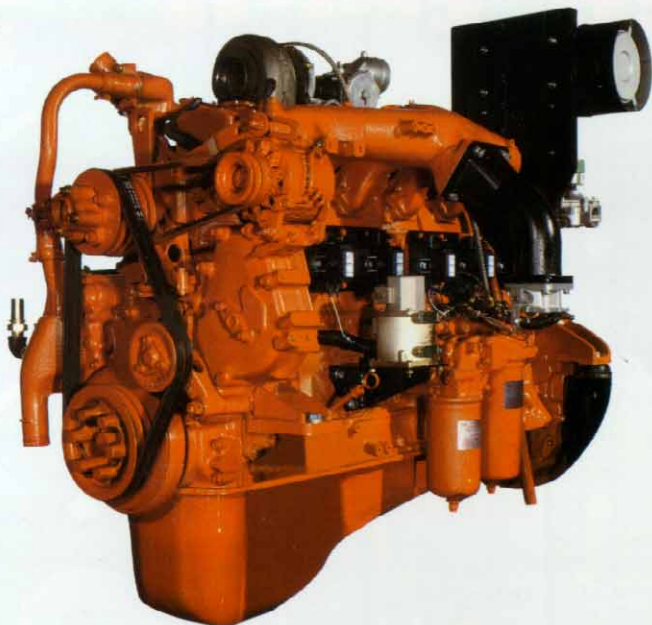
MAXIMUM BACK PRESSURE	5.0Kpa (1.5" Hg)
EXHAUST DIAMETER	(2) 2.5" NPT Female

- FUEL SYSTEM -

LP	Optional
NATURAL GAS	Standard

* kW ratings are based on LP fuel system
 ** kW ratings are based on Natural Gas

GENERAC®
 POWER SYSTEMS



- ENGINE SPECIFICATIONS -

MODELS	133GN 133GTA
ASPIRATION - 133GN	Naturally Aspirated
- 133GTA	Turbo Charged, Aftercooled
RPM - 133GN (135kW) - LP or Nat. gas	1800
- 133GTA (150kW, 175kW & 200kW) - Nat. gas.....	1800
CYLINDERS.....	6, In-line
DISPLACEMENT.....	13.3L
BORE	5.39 in. (137.0 mm)
STROKE	5.91 in. (150.2 mm)
COMPRESSION RATIO	10.5:1
NUMBER OF MAIN BEARINGS.....	7
CYLINDER HEAD	Cast Iron
PISTONS.....	Aluminum
CYLINDER LINERS	Wet
CYLINDER BLOCK	Cast Iron
CRANKSHAFT	Nodular Cast Iron

- VALVES -

LIFTER TYPE	Hydraulic
INTAKE VALVE MATERIAL.....	High Temp. Steel
EXHAUST VALVE MATERIAL	High Temp. Steel

- ENGINE GOVERNOR -

ELECTRONIC	Standard
------------------	----------

- LUBRICATION SYSTEM -

OIL PUMP TYPE.....	Gerotor
OIL FILTER.....	Full Flow
CRANKCASE CAPACITY W/FILTER.....	2.8L (3 gal.)

- COOLING SYSTEM -

COOLANT CAPACITY	29L (7.7 gal.)
COOLANT FLOW/MIN.....	170L (45 gal.)

- MAXIMUM COMBUSTION AIR REQUIREMENTS -

CFM AT RATED POWER - 1800 RPM (133GN).....	359
- 1800 RPM (133GTA)	845
AIR CLEANER.....	Pleated Paper

- EXHAUST SYSTEM -

MAXIMUM BACK PRESSURE	5.0Kpa (1.5" Hg)
EXHAUST DIAMETER.....	4" I.D. Flange

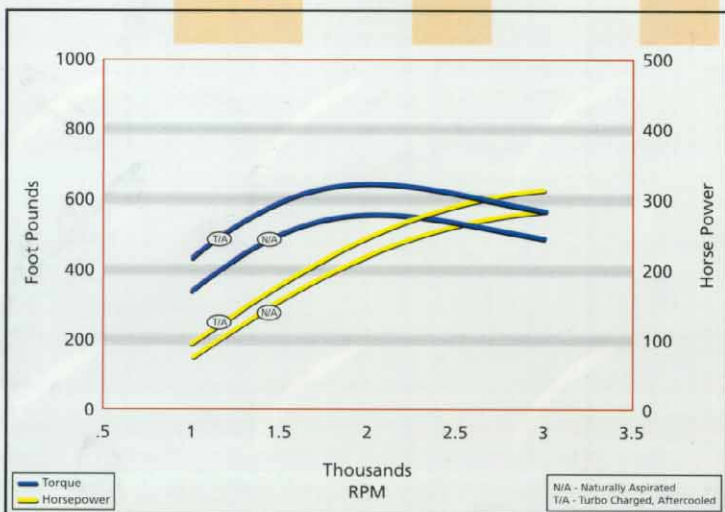
- FUEL SYSTEM -

LP.....	Optional on 135kW only
NATURAL GAS	Standard

Generac's powerful 13.3 liter gaseous fueled engine supplies the power for our 135kW, 150kW, 175kW, and 200kW standby generators.

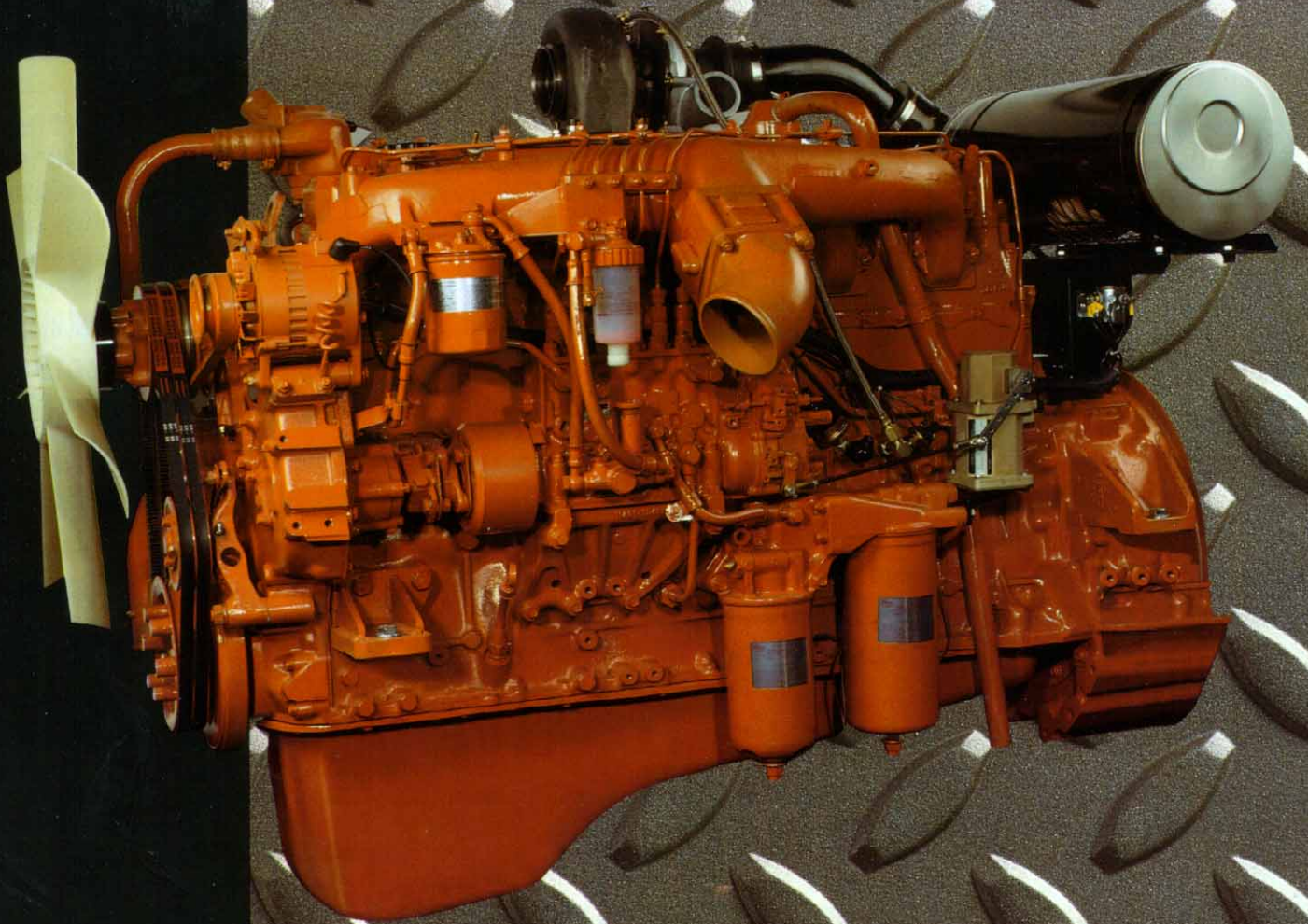
This engine has many outstanding features, including:

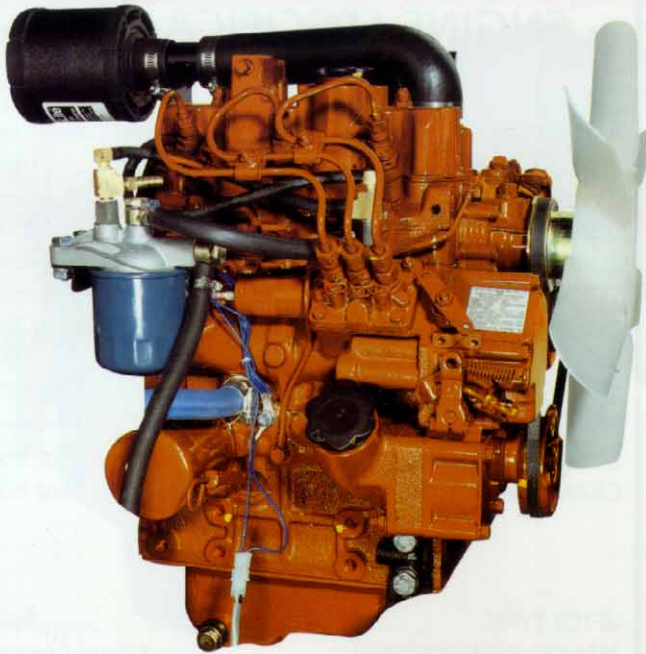
- High temperature steel intake and exhaust valves
- Capacitor discharge, electronic ignition system provides accurate timing, improved combustion and lower emissions
- Replaceable, wet-type cylinder liners



GENERAC®
POWER SYSTEMS

DIESEL FUELED ENGINES

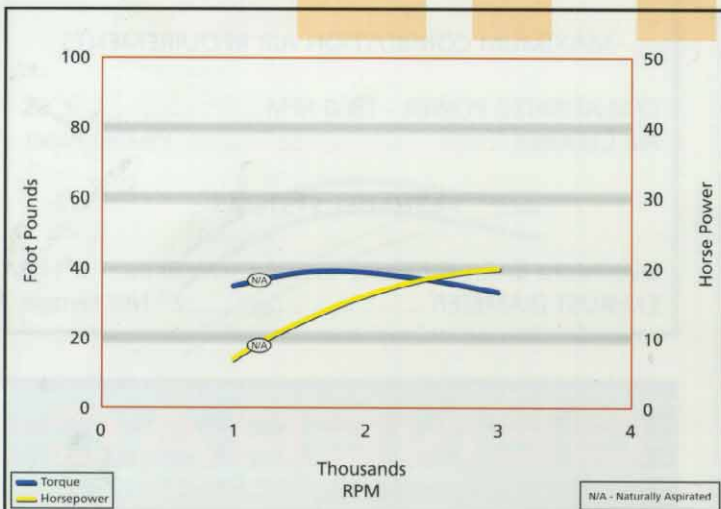




Generac's 1.0 liter, 3-cylinder, liquid-cooled diesel engine, combines impressive power to size and weight ratios with quiet operation and low emissions. This engine powers our 8kW generators in a variety of stationary, and mobile configurations.

Special engine features include:

- Cast iron block and cylinder head
- Low vibration
- In-line fuel injection pump
- Overhead valve design



- ENGINE SPECIFICATIONS -

MODELS 10DN
 ASPIRATION Naturally Aspirated
 RPM 1800
 CYLINDERS 3, In-line
 DISPLACEMENT 1.0L
 BORE 2.95 in. (75.0 mm)
 STROKE 2.83 in. (71.9 mm)
 COMPRESSION RATIO 23.0:1
 NUMBER OF MAIN BEARINGS 4
 CYLINDER HEAD Cast Iron
 PISTONS Aluminum
 CYLINDER BLOCK Cast Iron
 CRANKSHAFT Nodular Cast Iron

- VALVES -

LIFTER TYPE Solid
 INTAKE VALVE MATERIAL Silicon Chrome
 EXHAUST VALVE MATERIAL Stellite

- ENGINE GOVERNOR -

MECHANICAL Standard
 ELECTRONIC Optional

- LUBRICATION SYSTEM -

OIL PUMP TYPE Gerotor
 OIL FILTER Full Flow
 CRANKCASE CAPACITY W/FILTER 6.0L (6.3 qts.)

- FUEL SYSTEM -

FUEL FILTER 10 Micron
 INJECTION TYPE Pre-chamber

- COOLING SYSTEM -

COOLANT CAPACITY 6.6L (1.75 gal.)
 COOLANT FLOW/MIN 30L (8 gal.)

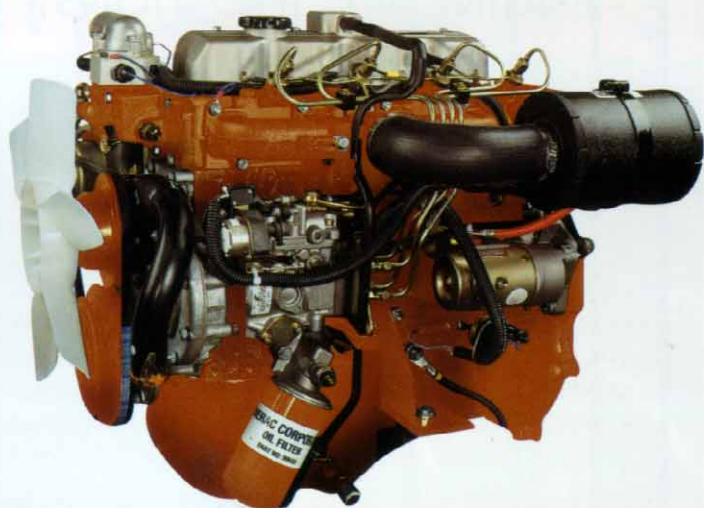
- MAXIMUM COMBUSTION AIR REQUIREMENTS -

CFM AT RATED POWER - 1800 RPM 26
 AIR CLEANER Pleated Paper

- EXHAUST SYSTEM -

MAXIMUM BACK PRESSURE 5.0Kpa (1.5" Hg)
 EXHAUST DIAMETER 1.5" NPT Female

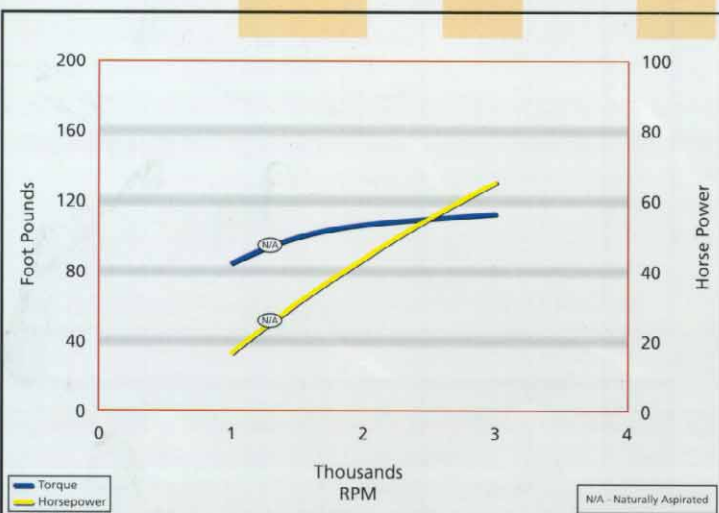
GENERAC[®]
POWER SYSTEMS



This 2.4 liter, 4-cylinder diesel engine offers rugged reliability through its high efficiency cooling system, cast iron cylinder head and nodular iron crankshaft. This naturally aspirated engine powers our 10kW, 15kW & 20kW generators.

Special engine features include:

- Clean combustion, fuel efficient design
- State of the art engine sealing system also promotes clean combustion
- Low noise and vibration design
- Silicon chrome intake valves offer long life
- Replaceable, dry-type cylinder sleeves



- ENGINE SPECIFICATIONS -

MODELS	24DN
ASPIRATION	Naturally Aspirated
RPM.....	1800
CYLINDERS	4, In,line
DISPLACEMENT	2.4L
BORE	3.60 in. (91.5 mm)
STROKE	3.50 in. (88.9 mm)
COMPRESSION RATIO	21.7:1
NUMBER OF MAIN BEARINGS.....	5
CYLINDER HEAD	Cast Iron
PISTONS.....	Aluminum
CYLINDER BLOCK	Cast Iron
CRANKSHAFT	Nodular Cast Iron

- VALVES -

LIFTER TYPE	Solid
INTAKE VALVE MATERIAL.....	Silicon Chrome
EXHAUST VALVE MATERIAL.....	Stellite

- ENGINE GOVERNOR -

MECHANICAL	Standard
ELECTRONIC	Optional

- LUBRICATION SYSTEM -

OIL PUMP TYPE.....	Gerotor
OIL FILTER.....	Full Flow
CRANKCASE CAPACITY W/FILTER.....	6L (6.3 qts.)

- FUEL SYSTEM -

FUEL FILTER.....	10 Micron
INJECTION TYPE	Pre-chamber

- COOLING SYSTEM -

COOLANT CAPACITY	8.5L (2 gal.)
COOLANT FLOW/MIN.....	60L (14 gal.)

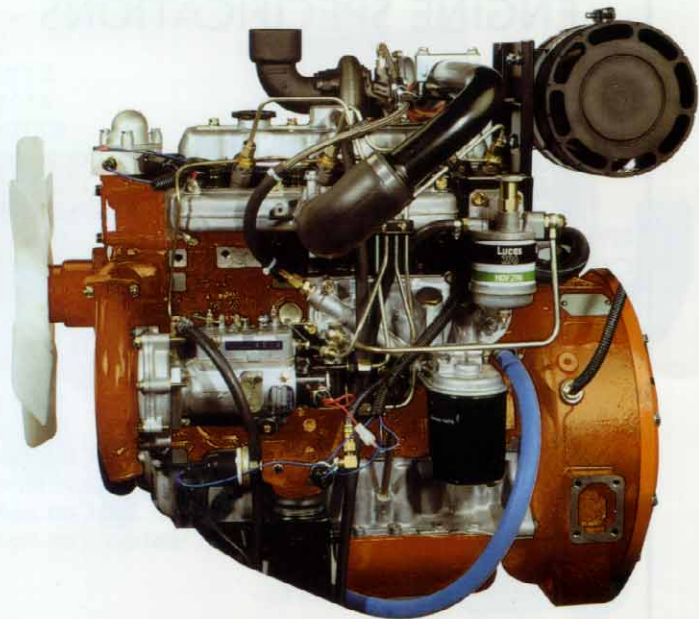
- MAXIMUM COMBUSTION AIR REQUIREMENTS -

CFM AT RATED POWER - 1800 RPM.....	65
AIR CLEANER.....	Pleated Paper

- EXHAUST SYSTEM -

MAXIMUM BACK PRESSURE	5.0Kpa (1.5" Hg)
EXHAUST DIAMETER	2" NPT Female

GENERAC®
POWER SYSTEMS



- ENGINE SPECIFICATIONS -

MODELS	30DN 30DT
ASPIRATION - 30DN	Naturally Aspirated
- 30DT	Turbo Charged
RPM.....	1800
CYLINDERS.....	4, In-line
DISPLACEMENT.....	3.0L
BORE.....	3.74 in. (95.0 mm)
STROKE.....	4.13 in. (105.0 mm)
COMPRESSION RATIO.....	21.0:1
NUMBER OF MAIN BEARINGS.....	5
CYLINDER HEAD.....	Cast Iron
PISTONS.....	Aluminum
CYLINDER BLOCK.....	Cast Iron
CRANKSHAFT.....	Nodular Cast Iron

- VALVES -

LIFTER TYPE.....	Solid
INTAKE VALVE MATERIAL.....	Silicon Chrome
EXHAUST VALVE MATERIAL.....	Stellite

- ENGINE GOVERNOR -

MECHANICAL.....	Standard
ELECTRONIC.....	Optional

- LUBRICATION SYSTEM -

OIL PUMP TYPE.....	Gerotor
OIL FILTER.....	Full Flow
CRANKCASE CAPACITY W/FILTER.....	6L (6.3 qts.)

- FUEL SYSTEM -

FUEL FILTER.....	10 Micron
INJECTION TYPE.....	Pre-chamber

- COOLING SYSTEM -

COOLANT CAPACITY.....	10.6L (2.8 gal.)
COOLANT FLOW/MIN.....	90L (24 gal.)

- MAXIMUM COMBUSTION AIR REQUIREMENTS -

CFM AT RATED POWER - 1800 RPM (30DN).....	95
- 1800 RPM (30DT).....	132
AIR CLEANER.....	Pleated Paper

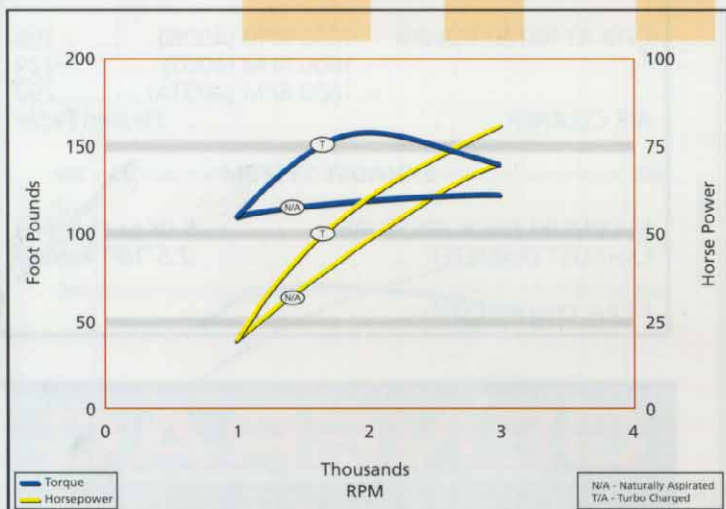
- EXHAUST SYSTEM -

MAXIMUM BACK PRESSURE.....	5.0Kpa (1.5" Hg)
EXHAUST DIAMETER.....	2" NPT Female

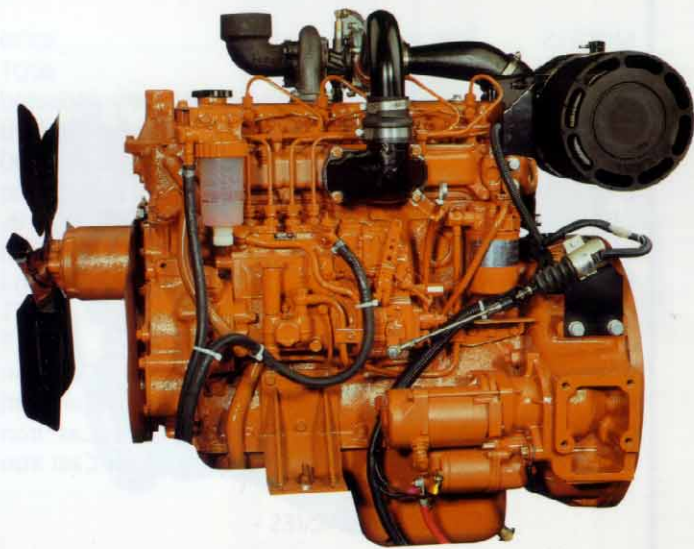
Generac's 3.0 liter, 4-cylinder diesel engine is another great example of effective design that achieves durable operation. This naturally aspirated engine powers our 25kW generator, while the turbo charged engine powers our 30kW and 35kW generators.

Special engine features include:

- Stellite faced exhaust valves offer improved performance and long life
- Silicon chrome intake valves offer long life
- Cast iron block and cylinder head
- Clean combustion, fuel efficient design



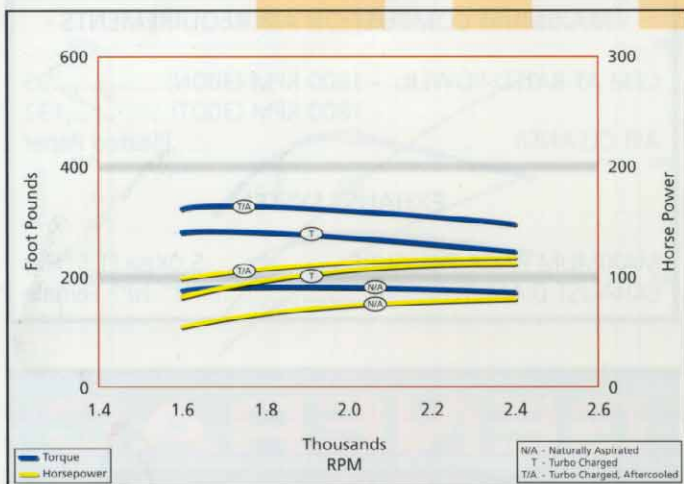
GENERAC
POWER SYSTEMS



This 4.0 liter, 4-cylinder, diesel engine is renowned for its ability to achieve a long life and prolonged intervals between service. This engine is naturally aspirated for 40kW, turbo charged for 50kW and turbo charged, aftercooled for our 75kW generators.

Special engine features include:

- Cast iron block and cylinder head
- Nodular iron crankshaft for improved strength
- Clean combustion, fuel efficient design
- High temperature steel intake and exhaust valves
- Cross-flow cylinder head porting



- ENGINE SPECIFICATIONS -

MODELS	40DN
	40DT
	40DTA
ASPIRATION - 40DN	Naturally Aspirated
- 40DT	Turbo Charged
- 40DTA	Turbo Charged, Aftercooled*
RPM	1800
CYLINDERS	4, In-line
DISPLACEMENT	4.0L
BORE	4.09 in. (103.0 mm)
STROKE	4.65 in. (118.2mm)
COMPRESSION RATIO - 40DN	19.2:1
- 40DT	17.0:1
NUMBER OF MAIN BEARINGS	5
CYLINDER HEAD	Cast Iron
PISTONS	Aluminum
CYLINDER BLOCK	Cast Iron
CRANKSHAFT	Nodular Cast Iron

- VALVES -

LIFTER TYPE	Solid
INTAKE VALVE MATERIAL	High Temp. Steel
EXHAUST VALVE MATERIAL	High Temp. Steel

- ENGINE GOVERNOR -

MECHANICAL	Standard
ELECTRONIC	Optional

- LUBRICATION SYSTEM -

OIL PUMP TYPE	Gerotor
OIL FILTER	Full Flow
CRANKCASE CAPACITY W/FILTER	10.5L (10 qts.)

- FUEL SYSTEM -

FUEL FILTER	5 Micron
INJECTION TYPE	Direct

- COOLING SYSTEM -

COOLANT CAPACITY	17L (4.5 gal.)
COOLANT FLOW/MIN	80L (19 gal.)

- MAXIMUM COMBUSTION AIR REQUIREMENTS -

CFM AT RATED POWER - 1800 RPM (40DN)	108
- 1800 RPM (40DT)	229
- 1800 RPM (40DTA)	290

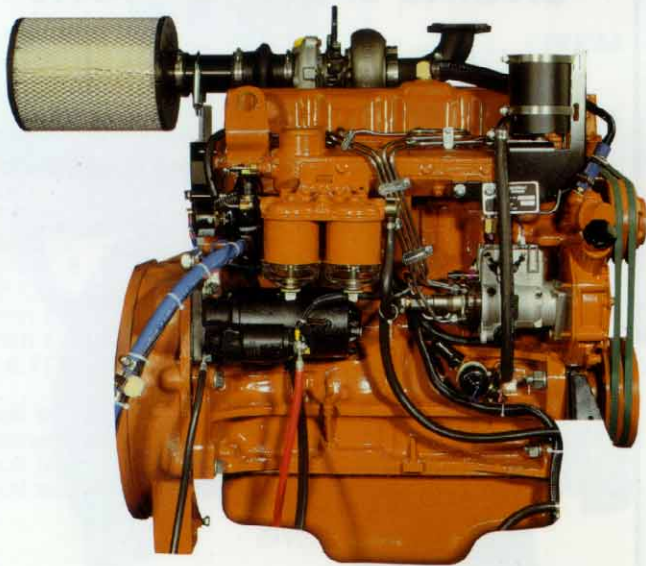
AIR CLEANER

- EXHAUST SYSTEM -

MAXIMUM BACK PRESSURE	5.0Kpa (1.5" Hg)
EXHAUST DIAMETER	2.5" NPT Female

* E.P.A. Emissions Certified

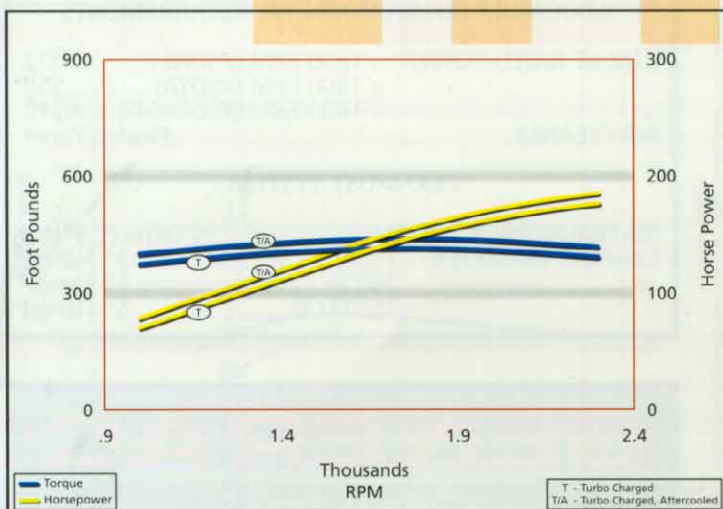
GENERAC[®]
POWER SYSTEMS



Generac's 5.0 liter, 4-cylinder diesel engine is dynamically balanced for smooth, long-life operation. The balance system is bolted to the bottom of the cylinder block and contains two weighted, fully lubricated gears. This engine is configured as turbo charged, turbo charged aftercooled, and turbo charged aftercooled gear-driven to be able to provide outputs of 60kW, 80kW, 100kW and 125kW.

Special engine features include:

- Cast iron block and cylinder head
- Nodular iron crankshaft for improved strength
- Cross-flow cylinder head porting
- Heat resistant aluminum pistons with ceramic inserts
- Gear driven camshaft and injector pump



- ENGINE SPECIFICATIONS -

MODELS	50DT
	50DTA
	50DTAGD
ASPIRATION - 50DT	Turbo Charged
- 50DTA	Turbo Charged, Aftercooled*
- 50DTAGD	Turbo Charged, Aftercooled
RPM - 50DT (60kW & 80kW)	1800
- 50DTA (100kW)	1800
- 50DTAGD (125kW)	2300
CYLINDERS	4, In-line
DISPLACEMENT	5.0L
BORE	4.41 in. (112.1 mm)
STROKE	5.00 in. (127.1 mm)
COMPRESSION RATIO	17.5:1
NUMBER OF MAIN BEARINGS	5
CYLINDER HEAD	Cast Iron
PISTONS	Aluminum
CYLINDER BLOCK	Cast Iron
CRANKSHAFT	Nodular Cast Iron

- VALVES -

LIFTER TYPE	Solid
INTAKE VALVE MATERIAL	High Temp. Steel
EXHAUST VALVE MATERIAL	High Temp. Steel

- ENGINE GOVERNOR -

MECHANICAL	Standard
ELECTRONIC	Optional

- LUBRICATION SYSTEM -

OIL PUMP TYPE	Gerotor
OIL FILTER	Full Flow
CRANKCASE CAPACITY W/FILTER	18L (19 qts.)

- FUEL SYSTEM -

FUEL FILTER	Dual Cartridge
INJECTION PUMP	Rotary
INJECTION TYPE	Direct

- COOLING SYSTEM -

COOLANT CAPACITY	15L (4.0 gal.)
COOLANT FLOW/MIN	185L (49 gal.)

- MAXIMUM COMBUSTION AIR REQUIREMENTS -

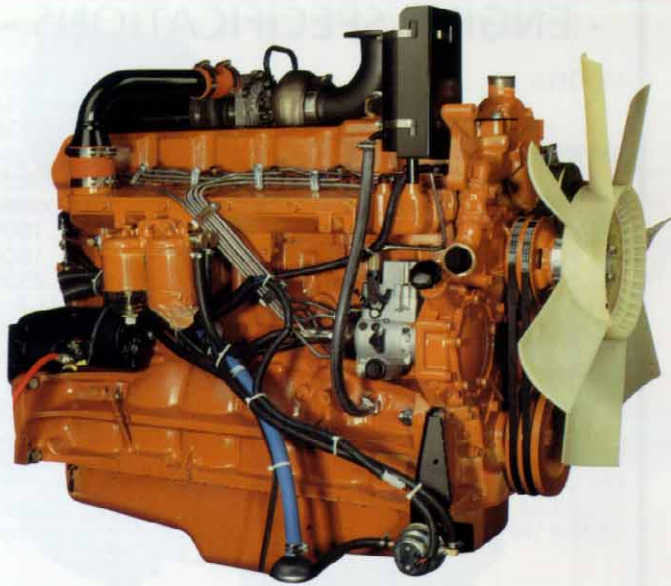
CFM AT RATED POWER - 1800 RPM (60kW)	285
- 1800 RPM (80kW)	330
- 1800 RPM (100kW)	372
- 2300 RPM (125kW)	475
AIR CLEANER	Pleated Paper

- EXHAUST SYSTEM -

MAX. BACK PRESSURE - 50DT	4.87Kpa (1.44" Hg)
- 50DTA	5.0Kpa (5.0" Hg)
- 50DTAGD	5.0Kpa (1.5" Hg)
EXHAUST DIAMETER	3" Flange

* E.P.A. Emissions Certified

GENERAC®
POWER SYSTEMS



- ENGINE SPECIFICATIONS -

MODELS	75DT
	75DTA
	75DTAGD
ASPIRATION - 75DT	Turbo Charged
- 75DTA	Turbo Charged, Aftercooled
- 75DTAGD	Turbo Charged, Aftercooled
RPM - 75DT (130kW)	1800
- 75DTA (155kW)	1800
- 75DTAGD (180kW)	2300
CYLINDERS	6, In-line
DISPLACEMENT	7.5L
BORE	4.41 in. (112.1 mm)
STROKE	5.00 in. (127.1 mm)
COMPRESSION RATIO	17.9:1
NUMBER OF MAIN BEARINGS	7
CYLINDER HEAD	Cast Iron
PISTONS	Aluminum
CYLINDER BLOCK	Cast Iron
CRANKSHAFT	Nodular Cast Iron

- VALVES -

LIFTER TYPE - 75DT	Solid
- 75DTA	Solid
- 75DTAGD	Solid
INTAKE VALVE MATERIAL	High Temp. Steel
EXHAUST VALVE MATERIAL	High Temp. Steel

- ENGINE GOVERNOR -

MECHANICAL	Standard
ELECTRONIC	Optional

- LUBRICATION SYSTEM -

OIL PUMP TYPE	Gerotor
OIL FILTER	Full Flow
CRANKCASE CAPACITY W/FILTER	22.7L (6 gal.)

- FUEL SYSTEM -

FUEL FILTER	10 Micron
INJECTION PUMP	Rotary
INJECTION TYPE	Direct

- COOLING SYSTEM -

COOLANT CAPACITY - 75DT	17.5L (4.6 gal.)
- 75DTA	42.0L (11.12 gal.)
- 75DTAGD	42.0L (11.12 gal.)
COOLANT FLOW/MIN	184L (48.8 gal.)

- MAXIMUM COMBUSTION AIR REQUIREMENTS -

CFM AT RATED POWER - 1800 RPM (75DN)	477
- 1800 RPM (75DTA)	558
- 1800 RPM (75DTAGD)	712
AIR CLEANER	Pleated Paper

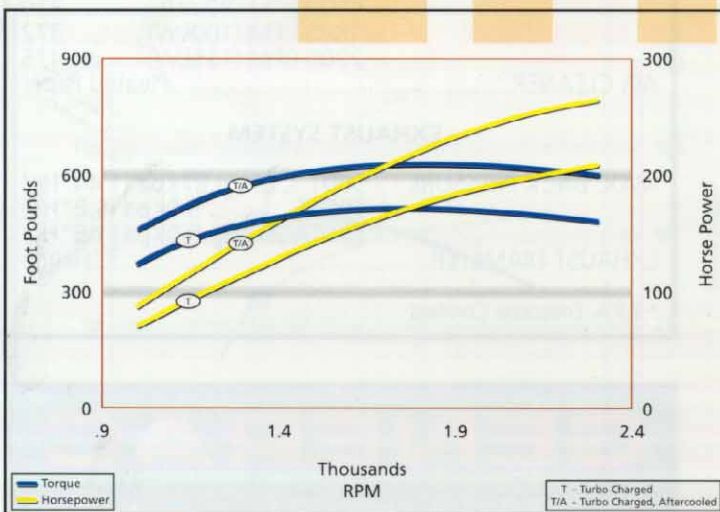
- EXHAUST SYSTEM -

MAXIMUM BACK PRESSURE	5.0Kpa (1.5" Hg)
EXHAUST DIAMETER - 75DN	3" Flange
- 75DTA	5" Flange
- 75DTAGD	5" Flange

This 7.5 liter, 6-cylinder diesel engine offers tremendous reliability through its deep skirted, cast iron cylinder block, and cast iron cylinder head. Configurations for this engine include turbo charged, turbo charged aftercooled, and turbo charged aftercooled gear-driven, which enable outputs of 130kW, 155kW, and 180kW.

Special engine features include:

- Gear driven camshaft and injector pump
- Nodular iron crankshaft for improved strength
- Clean combustion, fuel efficient design
- Heat resistant aluminum pistons with ceramic inserts
- Cross-flow cylinder head porting



GENERAC®
POWER SYSTEMS



- ENGINE SPECIFICATIONS -

MODELS	120DT 120DTA
ASPIRATION - 120DT	Turbo Charged
- 120DTA	Turbo Charged, Aftercooled
RPM	1800
CYLINDERS.....	6, In-line
DISPLACEMENT	12.0L
BORE	5.12 in. (130.1 mm)
STROKE	5.90 in. (149.9 mm)
COMPRESSION RATIO	16.5:1
NUMBER OF MAIN BEARINGS.....	7
CYLINDER HEAD	Cast Iron
PISTONS.....	Aluminum
CYLINDER LINERS	Wet
CYLINDER BLOCK	Cast Iron
CRANKSHAFT	Nodular Cast Iron

- VALVES -

LIFTER TYPE	Solid
INTAKE VALVE MATERIAL.....	High Temp. Steel
EXHAUST VALVE MATERIAL.....	High Temp. Steel

- ENGINE GOVERNOR -

MECHANICAL - 120DT	Standard
ELECTRONIC - 120DT	Optional
- 120DTA.....	Standard

- LUBRICATION SYSTEM -

OIL PUMP TYPE.....	Gerotor
OIL FILTER.....	Full Flow
CRANKCASE CAPACITY W/FILTER.....	31.0L (8.2 gal.)

- FUEL SYSTEM -

FUEL FILTER	Dual Cartridge
INJECTION PUMP.....	In-line
INJECTION TYPE.....	Direct

- COOLING SYSTEM -

COOLANT CAPACITY	58.0L (15.3 gal.)
COOLANT FLOW/MIN.....	210.0L (55.4 gal.)

- MAXIMUM COMBUSTION AIR REQUIREMENTS -

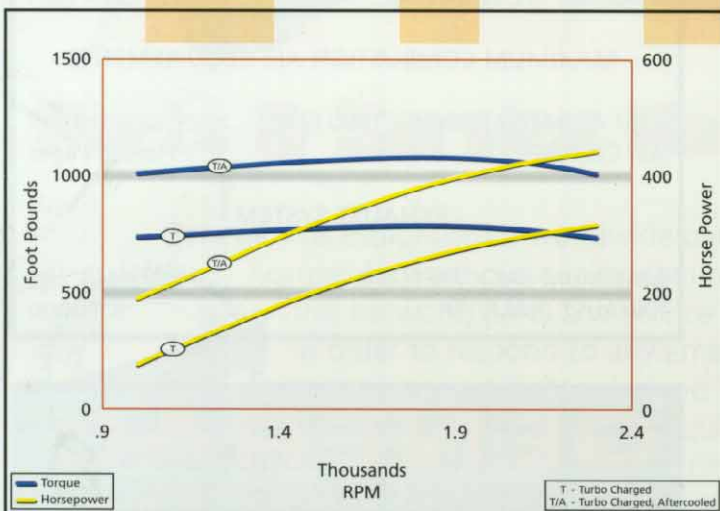
CFM AT RATED POWER - 1800 RPM (120DT)	763
- 1800 RPM (120DTA)	915
AIR CLEANER.....	Pleated Paper

- EXHAUST SYSTEM -

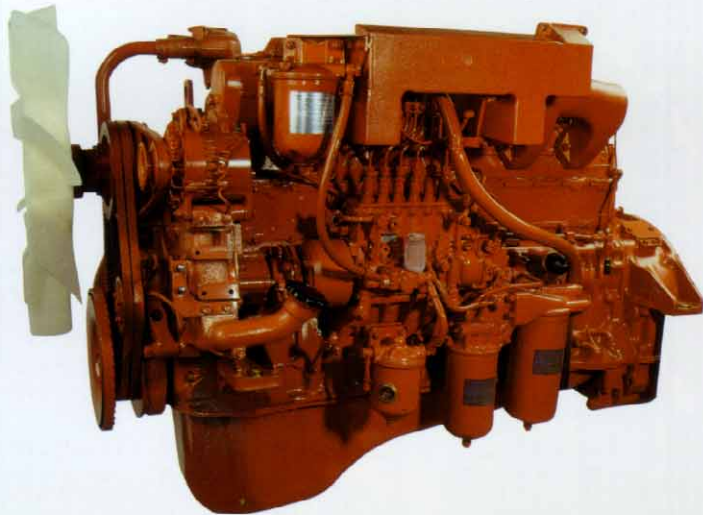
MAXIMUM BACK PRESSURE	10.0Kpa (3.0" Hg)
EXHAUST DIAMETER	5" Flange

Generac's 12.0 liter, 6-cylinder diesel engine offers state of the art reliability through its wet cylinder liners, cast iron cylinder head and nodular iron crankshaft. This engine is configured as turbo charged for 180kW and turbo charged aftercooled for 200kW, 230kW and 250kW.

- Cast iron block and cylinder head
- Nodular iron crankshaft for improved strength
- Clean combustion, fuel efficient design
- High temperature steel intake and exhaust valves
- Wet cylinder liners for improved engine wear protection



GENERAC®
POWER SYSTEMS



- ENGINE SPECIFICATIONS -

MODELS	130DTA
ASPIRATION	Turbo Charged, Aftercooled
RPM	1800
CYLINDERS	6, In-line
DISPLACEMENT	13.0L
BORE	5.31 in. (135.1 mm)
STROKE	5.91 in. (150.1 mm)
COMPRESSION RATIO	17.6:1
NUMBER OF MAIN BEARINGS	7
CYLINDER HEAD	Cast Iron
PISTONS	Aluminum
CYLINDER LINERS	Wet
CYLINDER BLOCK	Cast Iron
CRANKSHAFT	Nodular Cast Iron

- VALVES -

LIFTER TYPE	Solid
INTAKE VALVE MATERIAL	High Temp. Steel
EXHAUST VALVE MATERIAL	High Temp. Steel

- ENGINE GOVERNOR -

ELECTRONIC	Standard
------------------	----------

- LUBRICATION SYSTEM -

OIL PUMP TYPE	Gerotor
OIL FILTER	Full Flow
CRANKCASE CAPACITY W/FILTER	27.0L (7.13 gal.)

- FUEL SYSTEM -

FUEL FILTER	Element
INJECTION PUMP	In-line
INJECTION TYPE	Direct

- COOLING SYSTEM -

COOLANT CAPACITY	58L (15.3 gal.)
COOLANT FLOW/MIN	225L (59.4 gal.)

- MAXIMUM COMBUSTION AIR REQUIREMENTS -

CFM AT RATED POWER - 1800 RPM	1144
AIR CLEANER	Pleated Paper

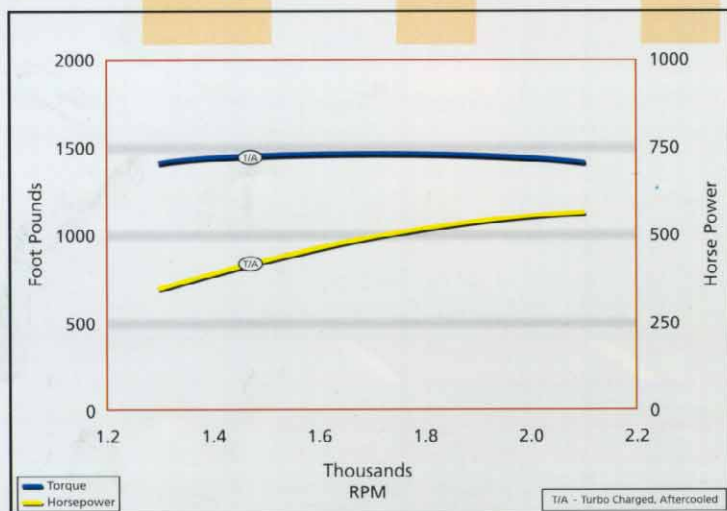
- EXHAUST SYSTEM -

MAXIMUM BACK PRESSURE	10.0Kpa (3" Hg)
EXHAUST DIAMETER	5" Flange

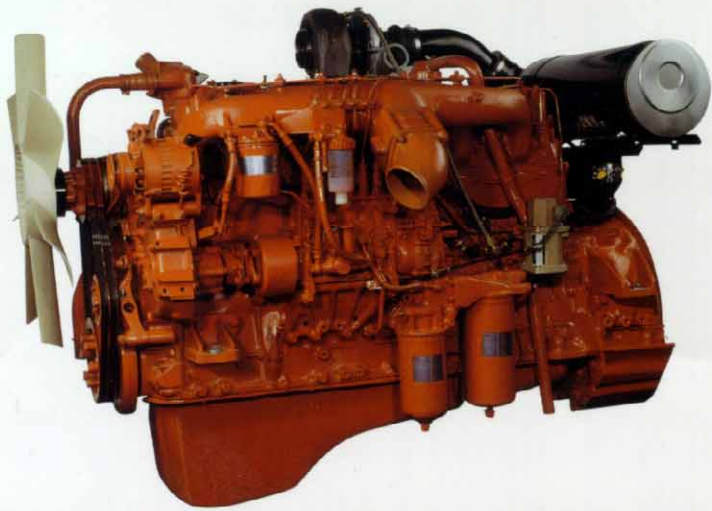
This 13.0 liter, 6-cylinder, high performance diesel engine is able to produce impressive power and reliable performance. This engine is turbo charged and aftercooled to deliver 350kW.

Special engine features include:

- Cast iron block and cylinder head
- Nodular iron crankshaft for improved strength
- Clean combustion, fuel efficient design
- High temperature steel intake and exhaust valves
- Wet cylinder liners for improved engine wear protection



GENERAC®
POWER SYSTEMS



- ENGINE SPECIFICATIONS -

MODELS.....	133DTA
ASPIRATION	Turbo Charged, Aftercooled
RPM	1800
CYLINDERS.....	6, In-line
DISPLACEMENT.....	13.3L
BORE	5.39 in. (137.0 mm)
STROKE	5.91 in. (150.1 mm)
COMPRESSION RATIO.....	16.5:1
NUMBER OF MAIN BEARINGS.....	7
CYLINDER HEAD	Cast Iron
PISTONS.....	Aluminum
CYLINDER LINERS.....	Wet
CYLINDER BLOCK	Cast Iron
CRANKSHAFT	Nodular Cast Iron

- VALVES -

LIFTER TYPE	Solid
INTAKE VALVE MATERIAL.....	High Temp. Steel
EXHAUST VALVE MATERIAL.....	High Temp. Steel

- ENGINE GOVERNOR -

MECHANICAL.....	Standard
ELECTRONIC.....	Optional

- LUBRICATION SYSTEM -

OIL PUMP TYPE.....	Gerotor
OIL FILTER.....	Full Flow
CRANKCASE CAPACITY W/FILTER	27.0L (7.13 gal.)

- FUEL SYSTEM -

FUEL FILTER.....	10 Micron
INJECTION PUMP.....	In-line
INJECTION TYPE.....	Direct

- COOLING SYSTEM -

COOLANT CAPACITY	58L (15.3 gal.)
COOLANT FLOW/MIN.....	225L (59.4 gal.)

- MAXIMUM COMBUSTION AIR REQUIREMENTS -

CFM AT RATED POWER - 1800 RPM.....	1141
AIR CLEANER.....	Pleated Paper

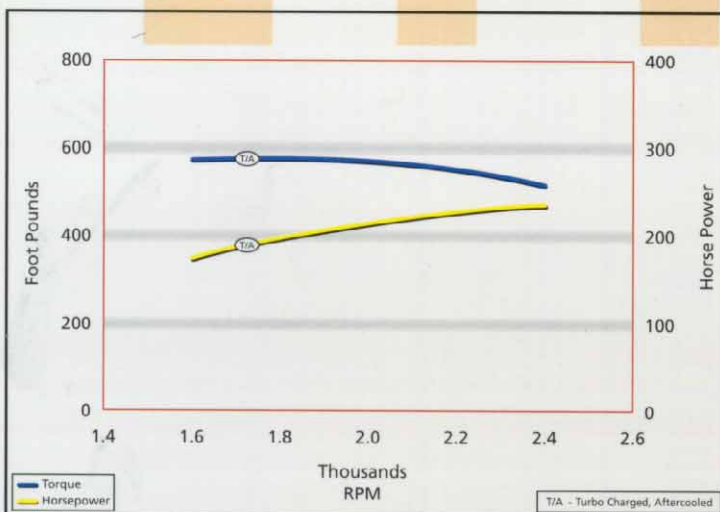
- EXHAUST SYSTEM -

MAXIMUM BACK PRESSURE	10.0Kpa (3" Hg)
EXHAUST DIAMETER	5" Flange

Generac's 13.3 liter, 6-cylinder diesel engine is an industry standard in its ability to achieve a long service life and prolonged intervals between maintenance. This turbo charged and aftercooled engine is used to power our 275kW and 300kW generator.

Special engine features include:

- Cast iron block and cylinder head
- Nodular iron crankshaft for improved strength
- Clean combustion, fuel efficient design
- Wet cylinder liners for improved engine wear protection



GENERAC®
POWER SYSTEMS

OVER 39 YEARS OF QUALITY AND SERVICE



Generac's Waukesha facility • Wisconsin, USA



Generac's Whitewater facility • Wisconsin, USA



Generac's Eagle facility • Wisconsin, USA

Chances are you won't need extra service from Generac after installation. But in the unlikely event that you do, you are backed in writing with the industry's best warranty and by a coast-to-coast service network of the largest and most experienced distributors in the nation - all of whom are staffed and trained to meet your needs.

Generac is the industry's most reliable single-source manufacturer. With 24-hour parts and field service, our nationwide Distribution Network stands ready to serve you whenever and wherever the need arises.

The best time for service is before trouble can begin. The Distribution Network's Start-Up and Training Assistance is designed to start you off right. In addition, the Network provides consultation on Installation and Systems Management. It even offers Preventive Maintenance and Service Programs to keep your standby power systems in perfect readiness.

And when you need to talk to the experts, Generac application engineers are on call at our Technical Center to help you with any problem.

So if you want a true understanding of a company's commitment to quality, measure its willingness to serve you after the sale. Then you will know why people in the industry and, more importantly, our customers refer to Generac and our nationwide Distribution Network as The Reliable Ones.

Authorized Distributor

GENERAC[®]
CORPORATION

Proudly serving industry since 1959
www.generac.com

(414)544-4811 • F(414)544-0770
P.O. BOX 8 • WAUKESHA, WI • 53187

The Reliable Ones

Bulletin SBY, 15924/Printed in USA 4.98
Specifications are subject to change without notice.