



GENERAC®

POWER SYSTEMS, INC.

GenLink® - DCP Operating Manual

Version 1.0

 ***SAVE THESE INSTRUCTIONS - The manufacturer suggests that these rules for safe operation be copied and posted in potential hazard areas. Safety should be stressed to all operators and potential operators of this equipment.*** 

This manual should remain with the unit.

GENERAL INFORMATION 1

Introduction 1

Features 1

Installing GenLink

 Prerequisites..... 1

 GenLink 1

Online Help..... 1

 Add Notes for Online Help 1

OPERATION 2

GenLink Menus 2

GenLink’s Power Manager Screens 3

Power Manager Configuration Screens 4

NOTES 5



SAVE THESE INSTRUCTIONS – *The manufacturer suggests that these rules for safe operation be copied and posted in potential hazard areas. Safety should be stressed to all operators and potential operators of this equipment.*



INTRODUCTION

Genlink®-DCP has been developed alongside Generac's latest control technology to give a more up-to-date and feature-rich user experience. Generac has incorporated such things as parameter file storage, variable trending, demo modes and a host of other features. Genlink®-DCP uses the industry standard Modbus protocol to communicate with Generac's latest controllers and allows for local or remote (via modem) communications. The package is easy to install and user friendly with it's own online context sensitive help system. It is recommended using Genlink along with the user manual for the particular product purchased.

FEATURES

- Context sensitive online help system
- Uses industry standard Modbus protocol
- Allows for local or remote (modem) connection
- Runs in "Demo" mode offline
- Allow product parameter uploading/storage in files/copying and downloading
- Allows product parameter editing offline
- Generates multiple reports
- Allows upgrades to the controller software upgrades in the field via modem
- Can perform variable trending and graphing of multiple variables in real time
- Multiple diagnostic functions
- Upload and download file to controllers inbuilt PLC (PLC programming tool is separate)
- Allows setup of controllers maintenance parameters

INSTALLING GENLINK

◆ PREREQUISITES

Before Genlink .NET can be installed, two other components will need to be in place. The two requisite files **MUST BE LOADED FIRST** before Genlink is installed.

First, install the .NET Framework version 1.1. This is available via Windows Update, or double-click on this file:

Prerequisites/dotnetfx.exe

Follow the instructions presented, then be sure to shutdown and restart the machine before going on to the next steps.

Next, install the Microsoft Data Access Components version 2.8 by double-clicking on this file:

Prerequisites/MDAC_TYP.EXE

Follow the instructions. Rebooting shouldn't be necessary.

◆ GENLINK

Install Genlink by double-clicking on the "Setup.exe" file in the Genlink_Setup subdirectory.

ONLINE HELP

Genlink is being constantly improved with new features added on a regular basis. In order to keep the documentation up to date, the main source of this documentation is provided by the online help system. This provides for context sensitive help on every Genlink screen. This manual should only be viewed as an introductory guide, the main source of documentation being from the online help system.

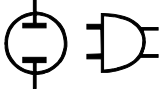
To access online help, either click on the "Help" button or use the "F1" key. This will bring up a help document which is displayed via explorer.

◆ ADD NOTES FOR ONLINE HELP

Personal help notes can be created with just a few simple keystrokes. Each help screen has it's own individual help document which is stored in the "\help" directory. Each help page has a link to an associated "notes" document where notes can be added. There is one "notes" file per help document (i.e. one per page).

The easiest way to edit the notes files is to run Genlink and bring up the help page that needs editing. Click on the "notes" link to bring up the notes file for that page. Right click on the help text and select "view source" to bring up the document in notepad. An alternative is to edit the file in notepad (or an HTML editor) without going through Genlink, but by using explorer to find the files. These are stored under the "\help" directory, under the directory where Genlink was installed.

Note that these files are in HTML format. By using the HTML format, headings, colored text, etc. can be used to enhance online notes.



In the sample shown below, text can be simply added or edited as normal in the area shown in bold.

```

<html>
<head>
<!-- $Id: E_Panel_Display.html,v 1.1 2003/10/10 20:17:22 Exp $ -->
<title>Genlink: E Panel Display</title>
</head>
<body bgcolor="white"> ← Background Color

<h1>Genlink: E Panel Display</h1> ← The Header

This is the main area of text that will be displayed when help is
requested.

</body>
</html>
    
```

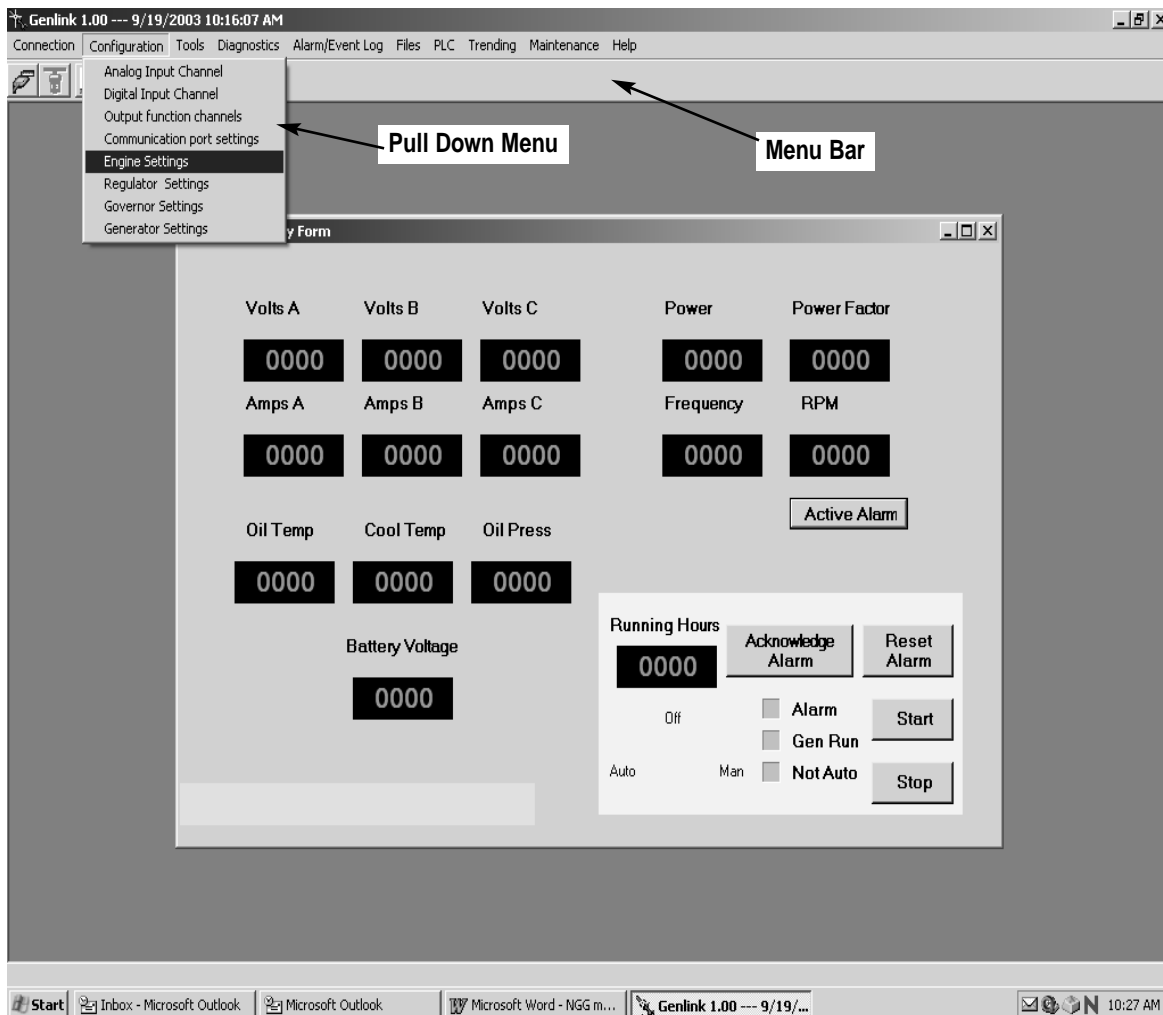
For additional features that HTML offers, consult a guide to the HTML format.

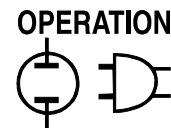
GENLINK MENU'S

Genlink uses pull down menu's to access it's features (Figure 1).

The tables at the top of page 3 show where the features can be found:

Figure 1 — GenLink® Menu





Connection	Configuration	Tools	Diagnostics	Alarm/Event log
Connect	Analog inputs	Get slave ID	Analog input	Alarm log
Disconnect	Digital inputs	Test COM port	Digital input	Event log
Demo	Output Functions	Test dial out	Output functions	Alarm log parameters
Exit	Communications		Digital outputs	Event log parameters
	Engine settings			
	Regulator settings			
	Governor settings			
	Generator settings			

Files	PLC	Trending	Maintenance	Help
File transfer	PLC	Trending setup		Index
File edit (offline)		Local trending		Search
		Remote trending		About

GENLINK'S POWER MANAGER SCREENS

The Power Manager screens that are shown by Genlink incorporate mimic screens and other methods to access extra features that are particular to this product (Figures 2 and 3).

Figure 2 — Power Manager Screen

Output relay status

Utility monitoring option

Click here to alter the time/date

Click to configure Power Manager

Click here to access this generator

Mimic of generators transfer switch

Mimic of main transfer switch

Lights RED when LIVE

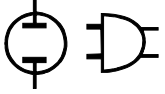
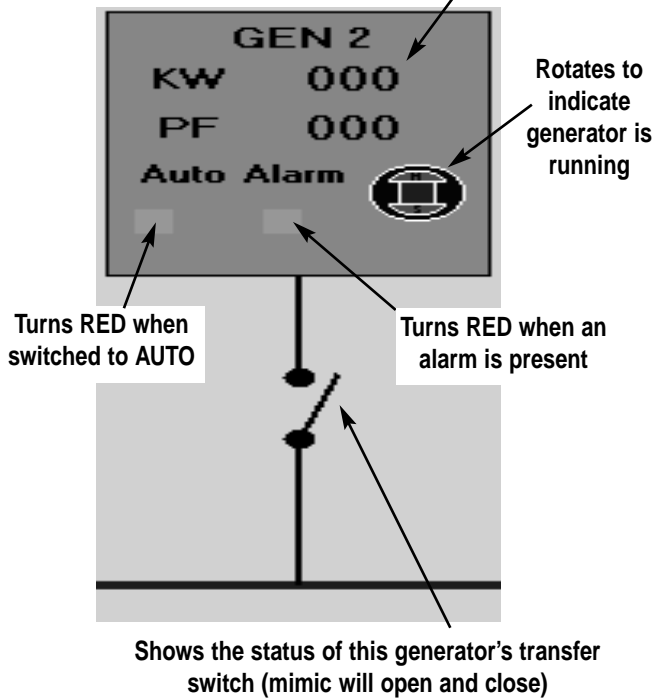


Figure 3 — Power Manager Screen

This generator's power and power factor



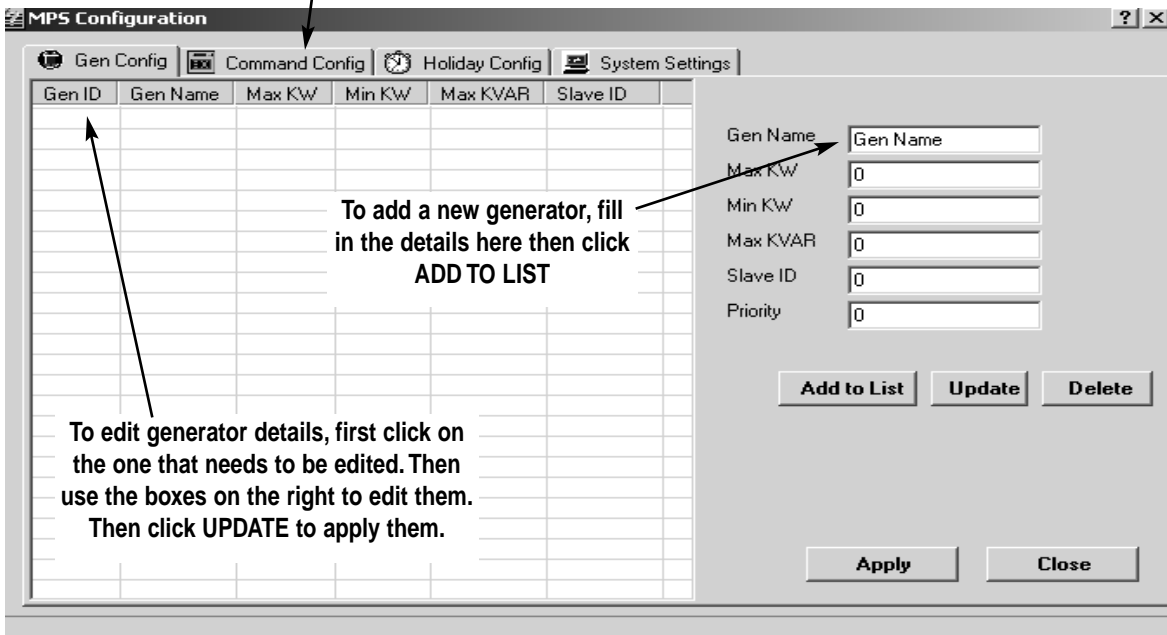
POWER MANAGER CONFIGURATION SCREENS

See Figure 4.

For detail of individual features and commands, refer to the online help system or the product manual.

Figure 4 — Power Manager Configuration Screens

Click on these tabs to select the configuration types (pages)



GENERAC® POWER SYSTEMS, INC.

P.O. BOX 8
WAUKESHA, WI 53187

Part No. OE8468

Revision 0 (10/29/03)

Printed in U.S.A.