



GENERAC[®]
MOBILE GENSETS

INNOVATIVE
POWERFUL
ULTRA-QUIET



THE WORLD OF GENERAC

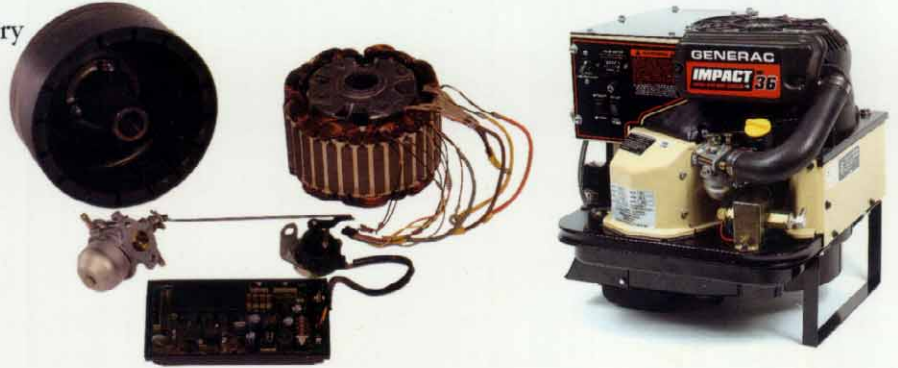
Back in 1959, an idea to make a small, portable generator spawned Generac ["gener" for generator + "ac" for AC output]. Today we are a leading manufacturer in a wide variety of markets. Integrated manufacturing has created a can-do attitude. From rotor windings to stator construction to the building of our exclusive, patented overhead valve industrial engines, it's all done in-house.



INNOVATIVE LEADERSHIP

Generac has provided the RV generator industry with the following breakthroughs:

- *overhead valve engine technology*
- *voltage-capped regulator*
- *variable speed operation*
- *electronic ignition*
- *single-side serviceability*
- *sound-attenuating laminated steel*
- *belt-drive technology*

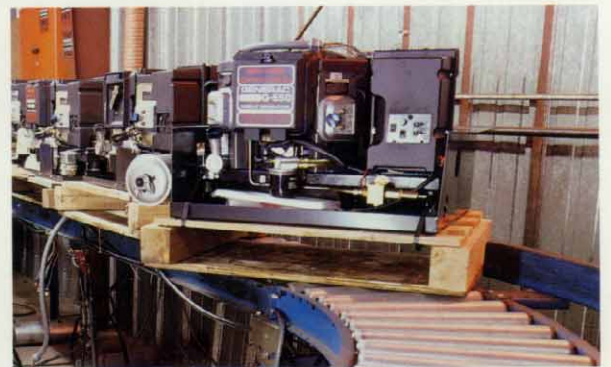


EXCEPTIONAL PRODUCT

Take a look at others in the RV generator market. What is their product like? What advancements have they made in the last decade? How do their units fit into your RV or trailer? Are they big? Heavy? Problems with emissions?

We've never rested at Generac. We are bound and determined to always improve and never quit. In the RV market our gensets are the most advanced, designed with you and your specifications in mind.

And if you have a special installation design in mind, we can work with your design engineers, and other aftermarket suppliers, creating a perfect turnkey operation to fit your production flow without a hitch.



ELITE SERVICE

Generac's new ELITE RV Service Program is unlike any other. Dealers are evaluated on how well the dealership is equipped to service RV owners. They are then categorized into three groups: ELITE, ELITE2 and ELITE3. These outlets offer the RV owner an RV specialized facility with indoor service bays near major roadways and technically proficient, service-driven personnel. As the level increases, so does compensation because more value is added to the end user. This is how we've attracted top notch RV service outlets.



PARTS SMART

As an example of Generac's renewed commitment to the RV industry, our Service Department has produced the PartSmart CD-ROM. Listing all repair and replacement parts for each model number ever made, this CD is a great service reference for all distributors and dealers alike.



GENERAC OVERHEAD VALVE INDUSTRIAL ENGINE TECHNOLOGY

OVERHEAD VALVE vs SIDEVALVE TECHNOLOGIES

Older, side-valve engines have been around for a long time, but they're not designed for the long haul. Generac overhead valve industrial (OHVI) engines are designed for demanding, longer running applications. They run cooler and more efficiently, even under the toughest working conditions. Because RV generators operate continuously for long periods of time, Generac OHVI engines provide superior, longer life performance – up to five times longer working life compared to similarly sized side-valve engines.

- **FULL PRESSURE LUBRICATION SYSTEM** - Provides instant lubrication to all vital bearings upon cold start-up. Reduces bearing temperature under heavy loads. Assures minimal wear and long life.
- **WHISPER QUIET** - Advanced piston, camshaft and gear technologies minimize engine noise at its source. Add an extra-large muffler and sound deadening intake silencer and you have all the power you need, without disturbing the peace.
- **LOW OIL PRESSURE SHUTDOWN** - Prevents engine damage due to loss of oil pressure. More reliable than level sensing systems.
- **CAST IRON CYLINDER WALLS** - Added durability assures long-life engine protection, withstanding the most extreme working conditions.



Generac's single cylinder and V-twin OHVI engines



No matter the coach, no matter the design...



Generac RV generators provide quiet, reliable power for the long haul.



HOW MUCH

FUN

CAN

YOU HAVE

IN AN

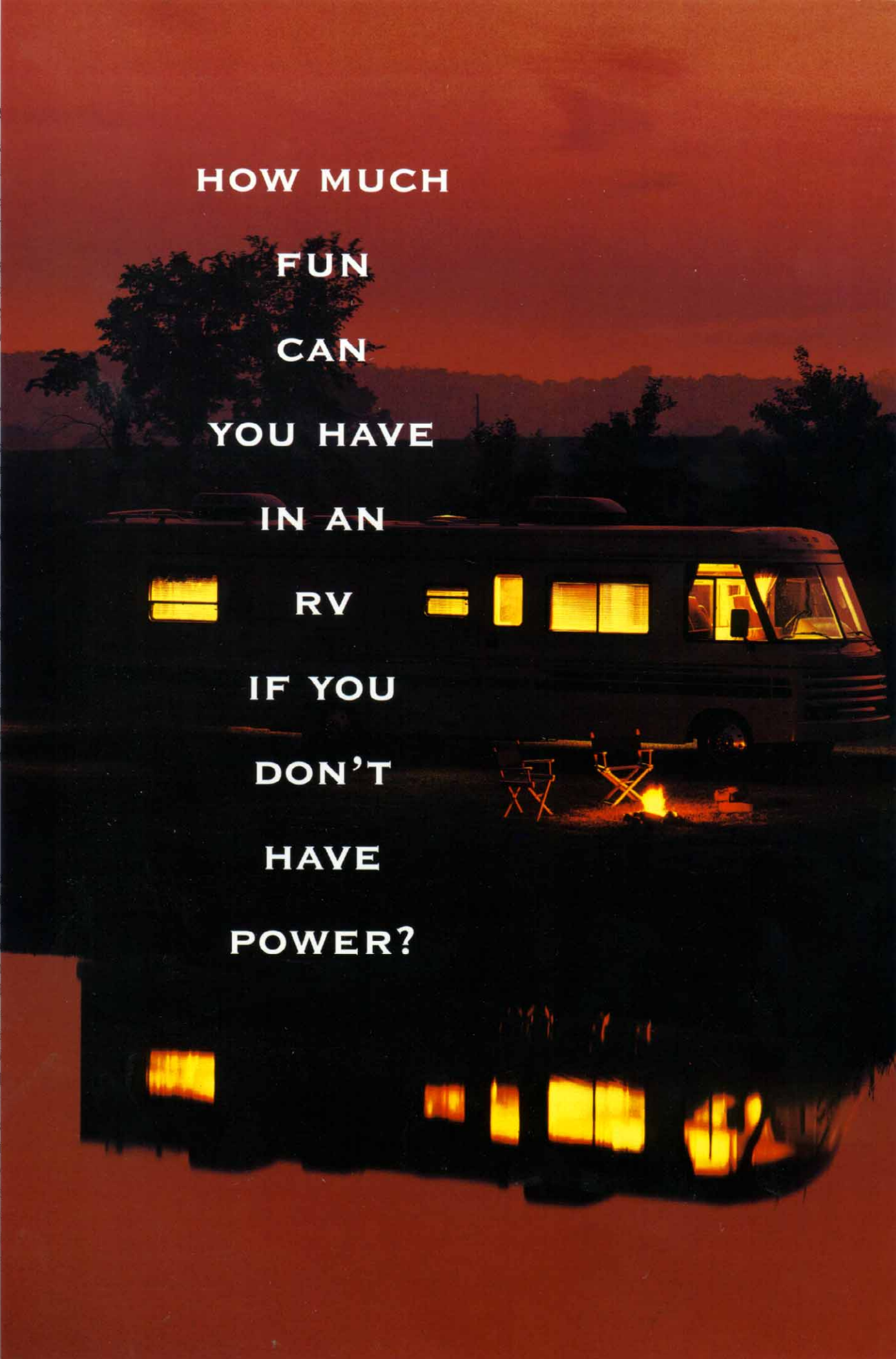
RV

IF YOU

DON'T

HAVE

POWER?



SPECIFICATIONS

MODEL	IMPACT 36	IMPACT 36 plus w/inverter	POWERPACT 50	POWERPACT 66	POWERPACT 55	QUIETPACT 55	POWERPACT 70	NP-75
WATTS	3600	3600	4800	6600	5500	5500	7000	7500
ENGINE RPM	variable	variable	2570	2700	2500	2570-2830	2900	1800
ENGINE	Generac 220cc	Generac 220cc	Generac 410cc	Generac 480cc	Generac 480cc	Generac 410cc	Generac 480cc	diesel 954c
AMPS	30	30	40	55	46	45.8	58.3	62.5/31.3
VOLTAGE	120V Single Phase		120V (reconnectable to 240V) Single Phase			120V Single Phase	120V (reconnectable to 240V) Single Phase	120/240V Single Phase
HERTZ	60	60	60	60	60	60	60	6
FUEL CONSUMPTION*	0.26	0.26	0.38	0.50	0.41	0.53	0.53	0.57
DIMENSIONS (L"xW"xH")	15.25 x 15.75 x 14.47			25 x 18.5 x 15.75		32.5 x 21.44 x 17.44	25 x 18.5 x 15.75	33.75 x 17.75 x 23.7
WEIGHT (lbs.)	88	88	197	213	215	244	222	452

* (gal per hr @ 1/2 Load)

COMMON FEATURES TO GENERAC RV GENERATORS

1) Laminated steel - the engine is enclosed with a laminated metal housing of unique sound deadening characteristics resulting in a 30% or more noise reduction compared to competitive open type designs.



2) Twin-turbo cooling - lowers operating temperatures, reduces high temperature power loss and increases engine life.

3) Engine oil fill - convenient and up front.

4) Anti-vibration mounting system - reduces annoying vibration.

5) Generac's new V-twin OHVI engine sets new standards of trouble free, low noise performance.

6) Extra large two stage air filter - reduces wear resulting in premature engine overhauls.

7) Electronic ignition - eliminates troublesome breaker points - reduces maintenance.

8) Full pressure oil lubrication system - provides superior lubrication for longer life.

9) Generac's voltage regulator - prevents over voltage and damaging surges.

10) Mainline circuit breakers - protect against overloads.

11) Single side serviceability - up front design allows convenient access to spark plugs and other routine maintenance components.

12) Starter contactor.

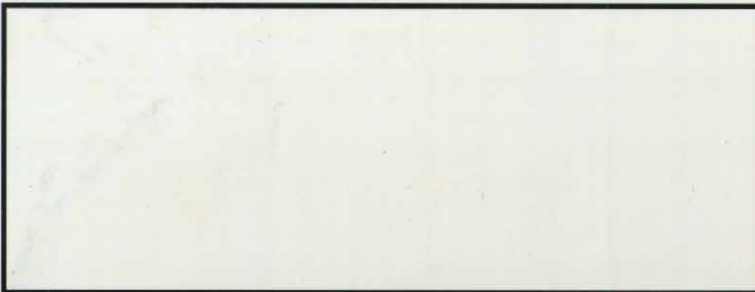
13) Fuel pump - up front with the fuel filter.

14) High temperature shut down.

15) Low oil pressure shut down.

16) Vertically mounted oil filter - allows for easy and clean removal.

YOUR LOCAL GENERAC SALES & SERVICE OUTLET



RV FIELD SUPPORT HOTLINE
1(800)526-2871

GENERAC
POWER SYSTEMS

Proudly serving industry since 1959
www.generac.com

T(414)544-4811 • F(414)544-4851
P.O. BOX 8 • WAUKESHA, WI • 53187

Bulletin RV 15235/Printed in USA/11.95 - revised 10.98
Specifications are subject to change without notice.