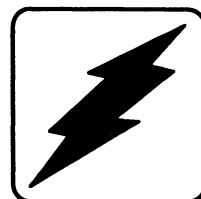


Parts Catalog

Engine



Engine Models:

John Deere 6076T
6076AT

Generator Models:

125-180ROZJ

KOHLER[®]
POWER SYSTEMS

Specification Series 189

TP-5369 8/89a

MODEL NUMBER INDEX

GROUP TITLE	Air Intake	Water Pump	Water Pump Repair Kit	Water Pump Housing	Thermostat & Housing	Fan Belts	Fan Drive
GROUP #	1	2a	2b	2c	2d	2e	2f
PAGE #	1	5	7	8	9	10	11
GRID #							
ENGINE 6076TF	1	1	1	1	1	1	1
6076AF (150kW)	2	1	1	1	1	1	1
6076AF (180kW)	2	1	1	1	1	1	2
GROUP TITLE							
GROUP TITLE	Camshaft	Rocker Arms	Rocker Arm Cover	Fuel Injection Pump	Fuel Injection Nozzle	Fuel Inj. Gov. Levers	Fuel Inj. Nozzles & Lines
GROUP #	4a	4b	4c	5a	5b	5c	5d
PAGE #	13	14	15	16	18	19	23
GRID #							
ENGINE 6076TF	1	1	1	1	1	1	1
6076AF (150kW)	1	1	1	2	2	2	2
6076AF (180kW)	1	1	1	3	3	2	3
GROUP TITLE							
GROUP TITLE	Cylinder Block	Crankshaft	Crankshaft Pulley	Main Thrust Bearing	Crankshaft Oil Seal	Cylinder Head	Dipstick
GROUP #	7	8a	8b	8c	8d	9	10
PAGE #	27	29	30	31	32	33	35
GRID #							
ENGINE 6076TF	1	1	1	1	1	1	1
6076AF (150kW)	2	1	1	1	1	1	1
6076AF (180kW)	2	1	1	1	1	1	1
GROUP TITLE							
GROUP TITLE	Starter Motor	Starter Drive Housing	Starter End Frame	Starter Main Frame	Starter Solenoid	Exhaust Manifold	Flywheel
GROUP #	11a	11b	11c	11d	11e	12	13a
PAGE #	36	37	38	39	40	41	42
GRID #							
ENGINE 6076TF	1	1	1	1	1	1	1
6076AF (150kW)	1	1	1	1	1	1	1
6076AF (180kW)	1	1	1	1	1	1	2

INTRODUCTION

This manual contains a complete listing of service replacement parts for John Deere diesel-fueled engine models 6076TF and 6076AF. The manual includes the following main sections in the sequence listed.

1. *Model Number Index:* Listing of engine model numbers arranged in numerical sequence on each

page. Group variation numbers are listed in the horizontal line to the right of each spec. number.

2. *Group Parts List:* Indicates specific parts for each specification. Illustrations of parts are shown for some of the various parts. Illustrations are keyed to the part numbers found in the parts group listings.

NUMBER SIGNIFICANCE

There are various numbers which must be used in the determining how to identify a part number. The significance of each of these numbers is explained as follows:

MODEL NUMBER: The engine number, which is found on the nameplate attached to the engine.

GROUP NUMBER: The group consists of related parts needed to provide one or more related functions.

GROUP VARIATION NUMBER: There may be various groupings of parts designed to provide the same function, however, with minor differences. Each of these differences necessitates the assignment of a group variation number. Example, dry air cleaner or oil bath air cleaner – both perform the same function, however, use different parts.

PART NUMBER: The part number is the number by which an individual piece of a generator set is identified and ordered.

HOW TO FIND PART NUMBERS

Following is a step-by-step procedure to be used in identifying and ordering a specific part.

Item to be ordered: MOTOR ASSEMBLY

STEP 1: Record the *Engine Model* number from the nameplate on the engine. (Sample: 6076TF)

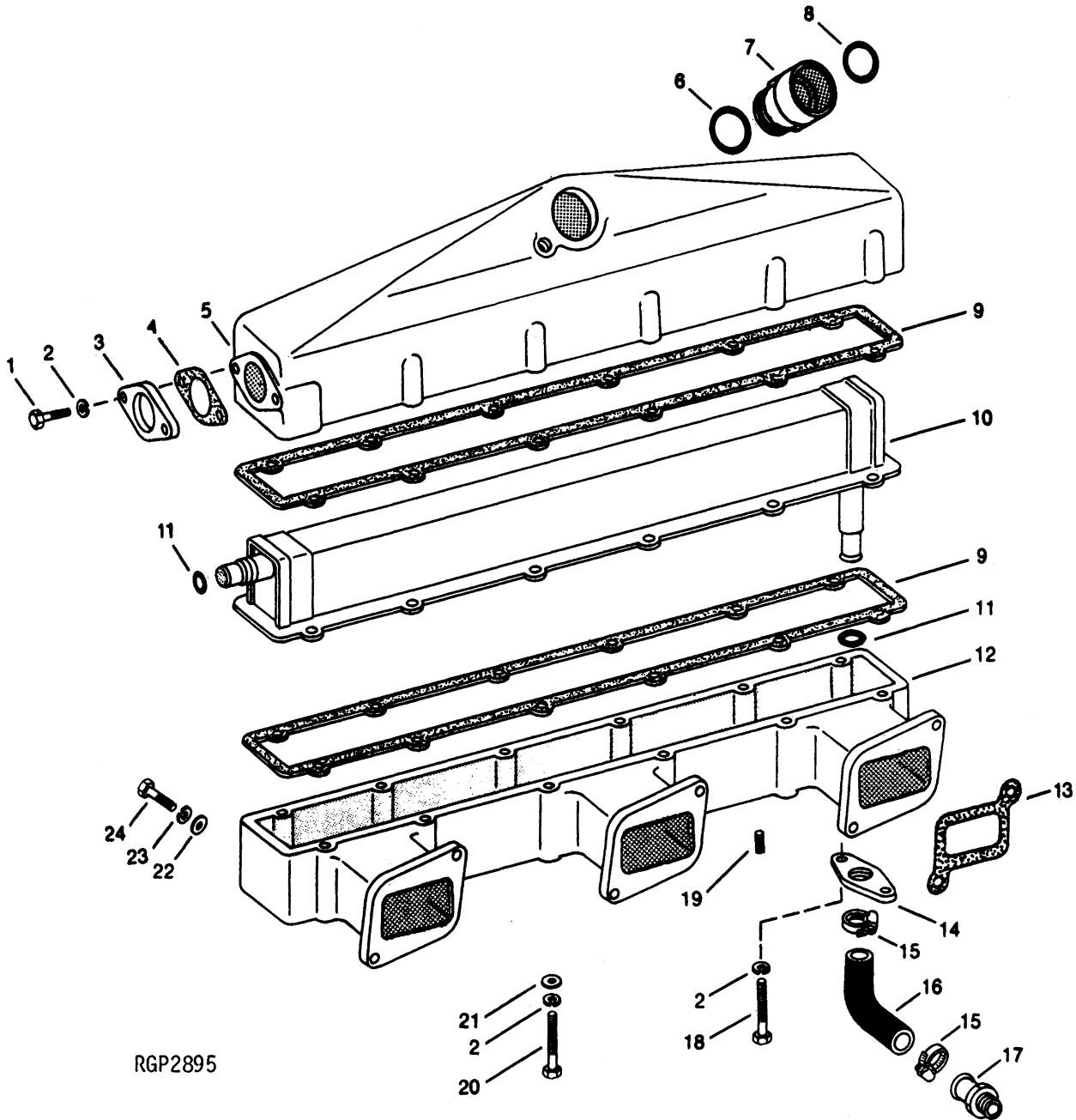
STEP 2: In the Model Number Index, find model

no. 6076TF in the left-hand vertical column. Under Group 11a – Starter Motor column, locate the variation number assigned to specification 6076TF. The variation number is 1.

STEP 3: Turn to Part Group 11a – Starter Motor. Note the Starter Motor is identified with Index Number 5 – under this number locate Variation 1. Starter Motor 223987 is assigned to this variation.

John Deere 6076TF and 6076AF

Group 1 Air Intake



Reproduced by permission of Deere & Company,
© 1988 Deere & Company All rights reserved.

Common Hardware, Procure Locally
X Not Sold Separately

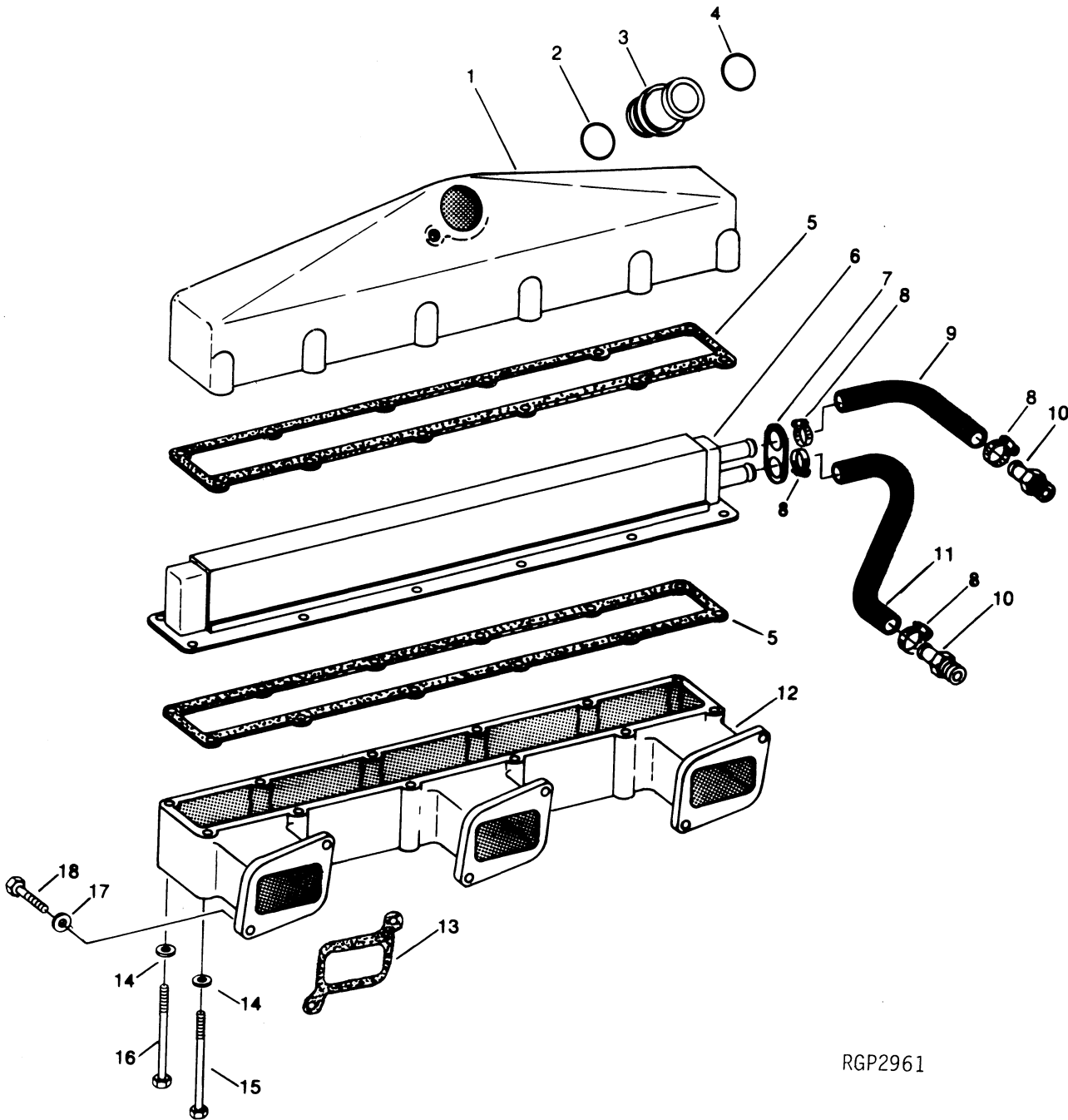
John Deere 6076TF and 6076AF

Group 1 Air Intake

Item	Qty.	Description Variation No.	Part No.	Item	Qty.	Description Variation No.	Part No.
1	2	Screw, 5/15-18 x 1-3/8" 1	#	21	10	Washer, 11/32 x 11/16 x .06" 1	#
2	14	Washer, 5/26" lock 1	#	22	6	Washer, 13/32 x 11/16 x .06" 1	#
3	1	Adapter 1	223764	23	6	Washer, 3/8" lock 1	#
4	1	Gasket 1	223765	24	6	Screw, 3/8-16 x 1-1/4" 1	#
5	1	Cover 1	223776				
6	1	O-ring 1	223780				
7	1	Coupling 1	223883				
8	1	O-ring 1	223885				
9	2	Gasket 1	223777				
10	1	Aftercooler 1	223687				
11	2	O-ring 1	223790				
12	1	Manifold, intake 1	223896				
13	3	Gasket 1	223888				
14	1	Adapter 1	223777				
15	2	Clamp 1	#				
16	1	Hose 1	223779				
17	1	Adapter 1	223766				
18	2	Screw, 5/16-18 x 4-1/4" 1	#				
19	1	Plug, 1/8 NPT pipe 1	#				
20	10	Screw, 5/16-18 x 4" 1	#				

John Deere 6076TF and 6076AF

Group 1 Air Intake



RGP2961

Reproduced by permission of Deere & Company,
© 1988 Deere & Company All rights reserved.

John Deere 6076TF and 6076AF

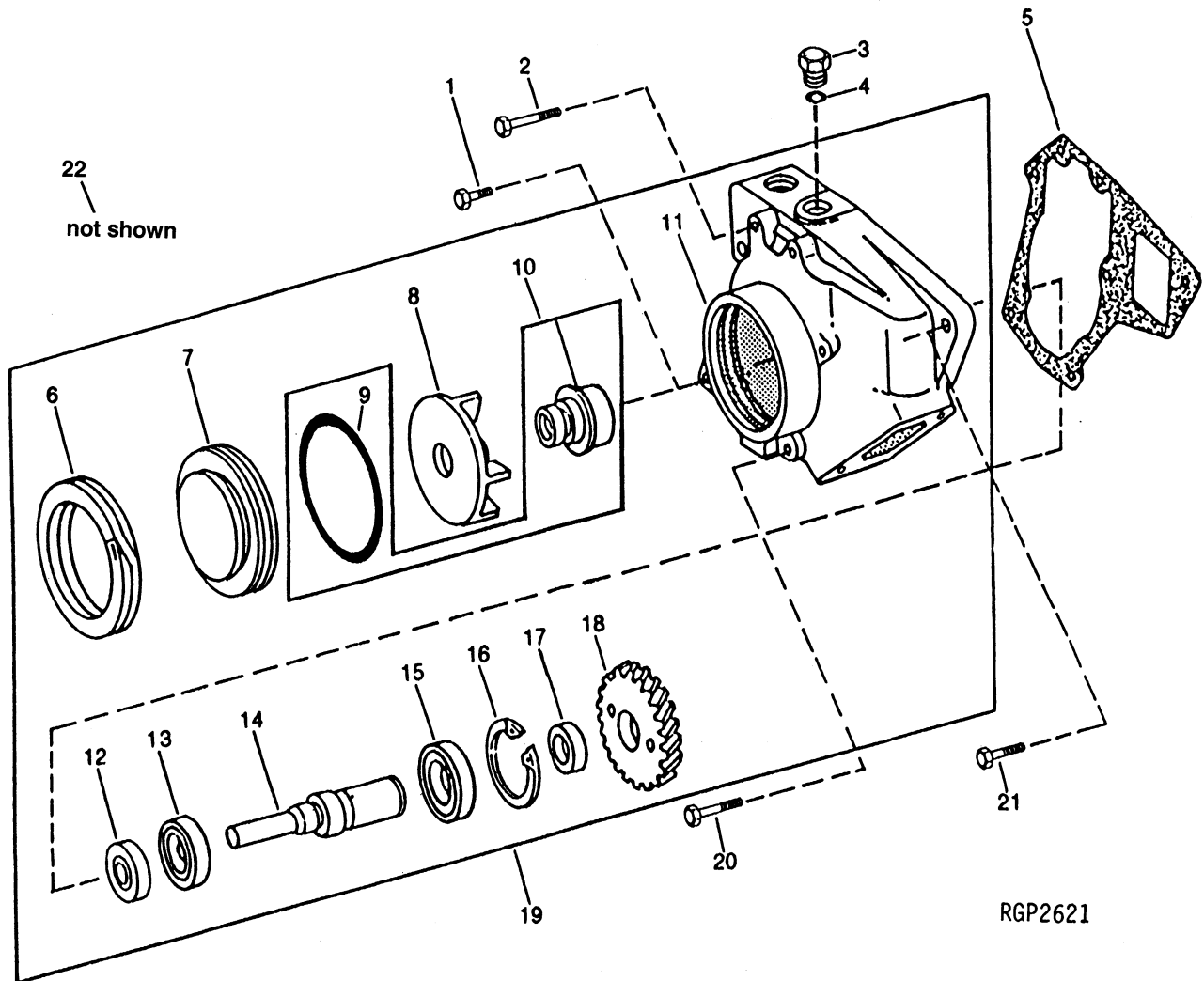
Group 1 Air Intake

Item	Qty.	Description Variation No.	Part No.	Item	Qty.	Description Variation No.	Part No.
1	1	Cover 2	223903				
2	1	O-ring 2	223885				
3	1	Coupling 2	223883				
4	1	O-ring 2	223780				
5	2	Gasket 2	223893				
6	1	Aftercooler 2	223967				
7	1	Seal 2	223736				
8	4	Clamp 2	#				
9	1	Hose 2	223894				
10	2	Fitting, hose (connector) 2	223733				
11	1	Hose 2	223909				
12	1	Manifold, coolant 2	223904				
13	3	Gasket 2	223888				
14	12	Washer, 11/32 x 11/16 x .06" 2	#				
15	6	Screw, 5/16-18 x 3-3/4" 2	#				
16	6	Screw, 5/16-18 x 3-3/4" 2	#				
17	6	Washer, 13/32 x 11/16 x .06" 2	#				
	6	Washer, 3/8" lock 2	#				
18	6	Screw, 3/8-16 x 1-1/2" 2	#				

Common Hardware, Procure Locally
X Not Sold Separately

John Deere 6076TF and 6076AF

Group 2a Water Pump



Reproduced by permission of Deere & Company,
© 1988 Deere & Company All rights reserved.

John Deere 6076TF and 6076AF

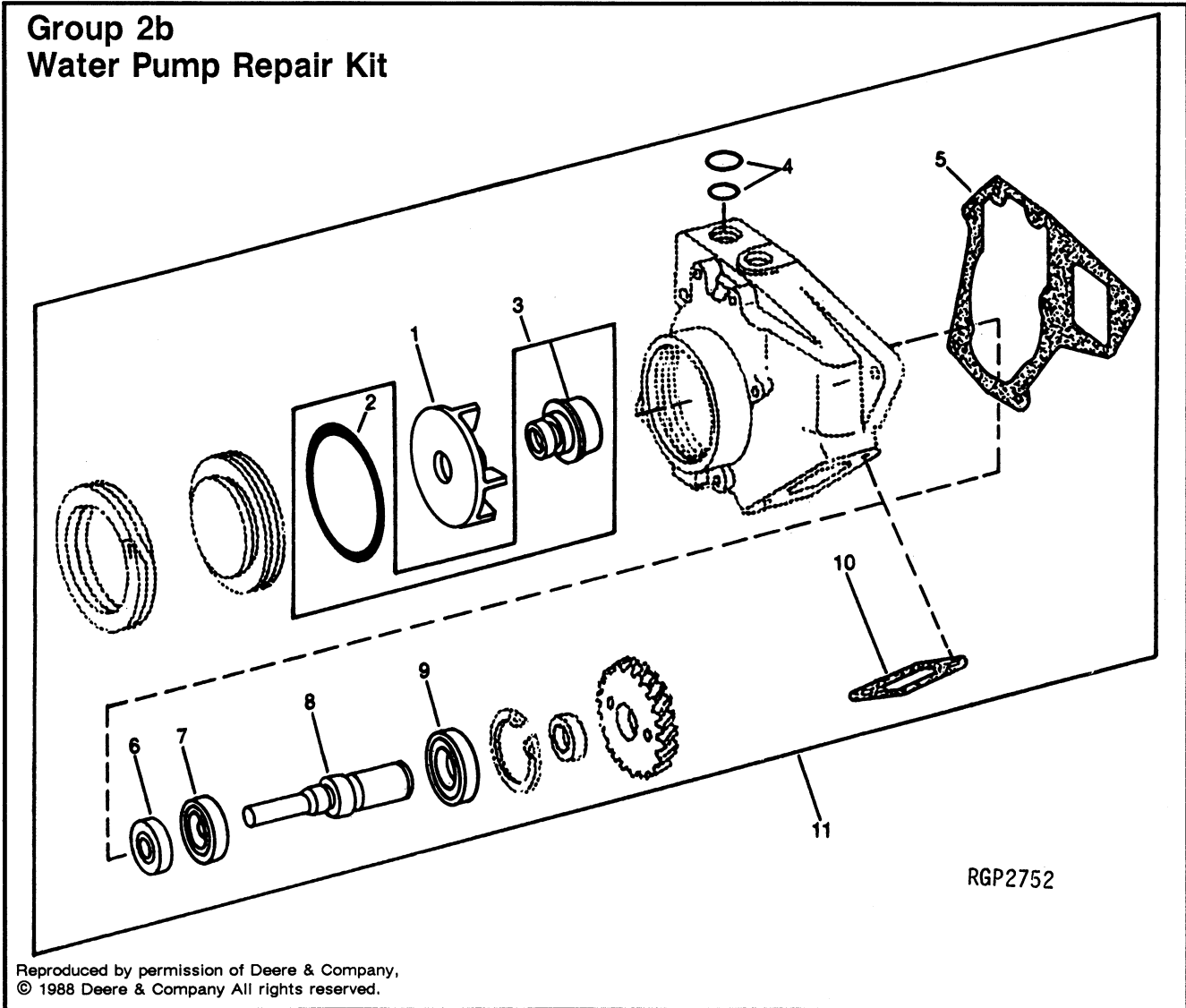
Group 2a Water Pump

Item	Qty.	Description Variation No.	Part No.	Item	Qty.	Description Variation No.	Part No.
1	2	Screw, cap 1	X	21	1	Screw, 3/8-16 x 3-1/4" cap 1	#
2	3	Screw, 3/8-16 x 5" cap 1	#	22	1	Roller, needle (dowel pin) 1	X
3	1	Plug, drain 1	223458				
4	1	O-ring 1	223746				
5	1	Gasket 1	223848				
6	1	Ring, snap 1	X				
7	1	Cover 1	X				
8	1	Impeller 1	X				
9	1	O-ring 1	X				
10	1	O-ring kit 1	223939				
11	1	Housing 1	X				
12	1	Seal 1	X				
13	1	Bearing, ball 1	X				
14	1	Shaft 1	X				
15	1	Bearing, ball 1	X				
16	1	Ring 1	X				
17	1	Washer 1	X				
18	1	Gear 1	X				
19	1	Pump, water 1	223956				
20	1	Screw, 5/16-18 x 5" cap 1	#				

Common Hardware, Procure Locally
X Not Sold Separately

John Deere 6076TF and 6076AF

Group 2b Water Pump Repair Kit

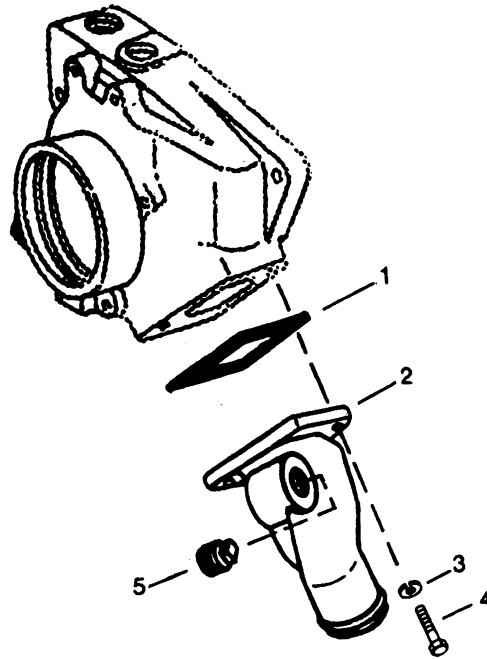


Reproduced by permission of Deere & Company,
© 1988 Deere & Company All rights reserved.

Item	Qty.	Description Variation No.	Part No.	Item	Qty.	Description Variation No.	Part No.
1	1	Impeller 1	X	7	1	Bearing, ball 1	X
2	1	O-ring 1	X	8	1	Shaft 1	X
3	1	O-ring kit 1	223939	9	1	Bearing, ball 1	X
4	2	O-ring 1	223763	10	1	Gasket 1	223849
5	1	Gasket 1	223848	11	1	Repair kit, water pump 1	223934
6	1	Seal 1	X				

John Deere 6076TF and 6076AF

Group 2c Water Pump Housing



Reproduced by permission of Deere & Company,
© 1988 Deere & Company All rights reserved.

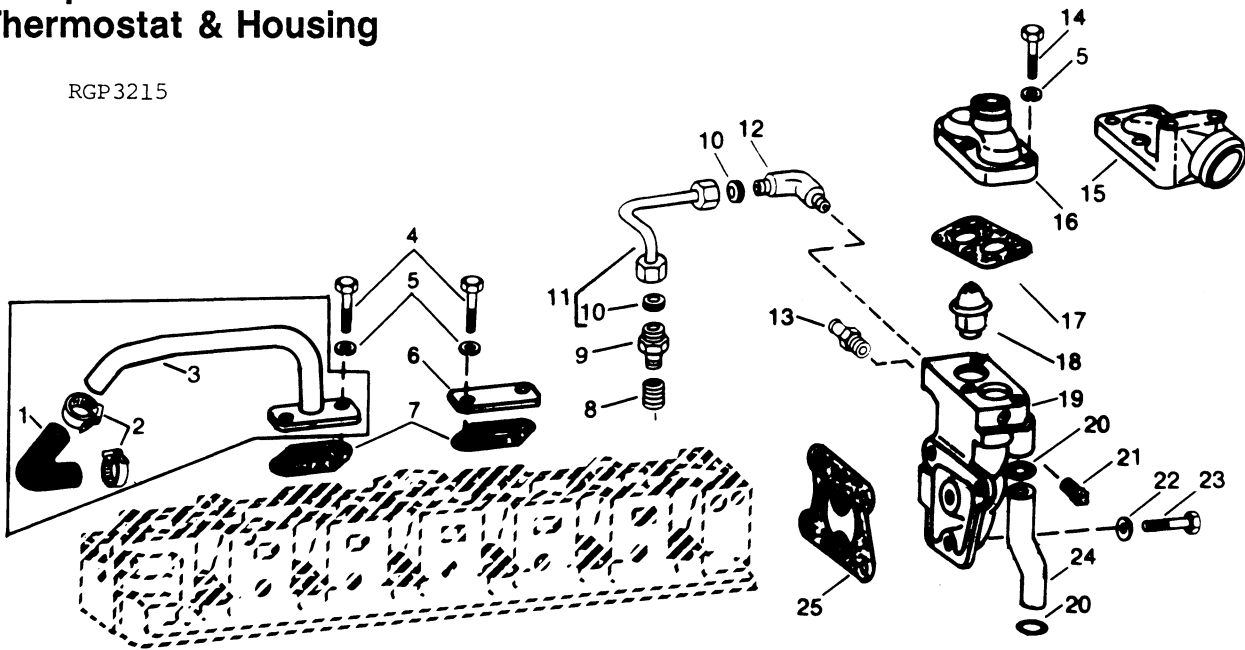
Item	Qty.	Description Variation No.	Part No.	Item	Qty.	Description Variation No.	Part No.
1	1	Gasket 1	223849				
2	1	Housing 1	223878				
3	2	Washer, M8 lock 1	#				
4	2	Screw, M8 x 20 cap 1	#				
5	1	Plug, 1/2NPT pipe 1	#				

Common Hardware, Procure Locally
X Not Sold Separately

John Deere 6076TF and 6076AF

Group 2d Thermostat & Housing

RGP3215



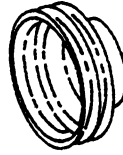
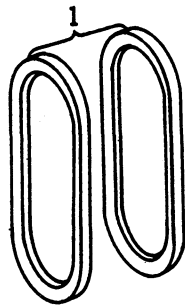
Reproduced by permission of Deere & Company,
© 1988 Deere & Company All rights reserved.

Item	Qty.	Description Variation No.	Part No.	Item	Qty.	Description Variation No.	Part No.
1			not used	14	3	Screw, 3/8-16 x 1-3/8" 1	#
2			not used	15			not used
3			not used	16	1	Cover 1	223879
4	4	Screw, 3/8-16 x 1-1/8" 1	#	17	1	Gasket 1	223762
5	7	Washer, 3/8" 1	#	18	2	Thermostat 1	223676
6	2	Cover 1	223881	19	1	Manifold 1	223920
7	2	Gasket 1)	223892	20	2	O-ring 1	223763
8	1	Bushing, 1/8 NPT pipe 1	#	21	4	Plug, 3/4NPT pipe 1	#
9	1	Fitting 1	223820	22	3	Washer, 25/64 x 7/8 x .12" 1 (9.9 x 22.2 x 3.0 mm)	#
10	1	Packing (seal) 1	223476	23	3	Screw, 3/8-16 x 1-3/4" 1	#
11	1	Line 1	223977	24	1	Tube 1	223895
12	1	Fitting 1	223837	25	1	Gasket 1	223882
13	1	Fitting, hose 1	223733				

Common Hardware, Procure Locally
X Not Sold Separately

John Deere 6076TF and 6076AF

**Group 2e
Fan Belts**



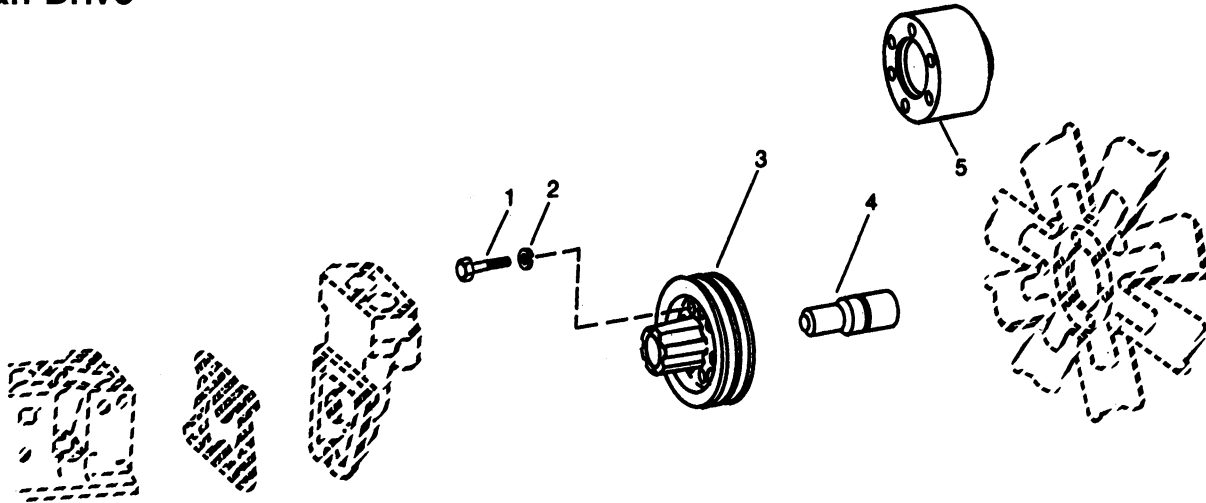
RG1570

Reproduced by permission of Deere & Company,
© 1988 Deere & Company All rights reserved.

Item	Qty.	Description Variation No.	Part No.	Item	Qty.	Description Variation No.	Part No.
1	1	Belt 1	223959				

John Deere 6076TF and 6076AF

Group 2f Fan Drive



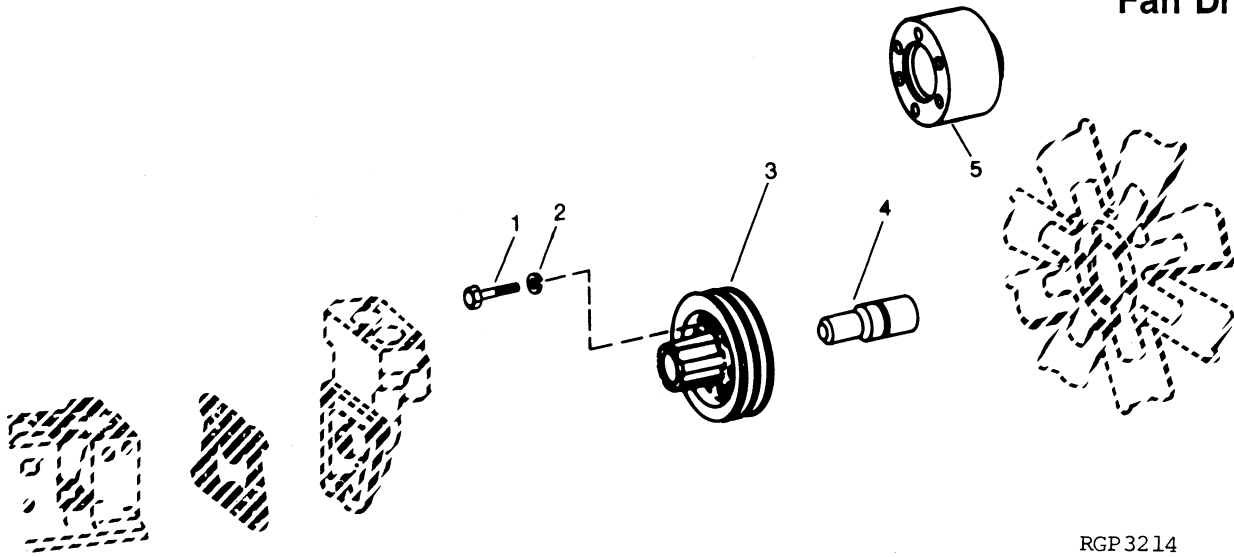
RGP2879

Reproduced by permission of Deere & Company,
© 1988 Deere & Company All rights reserved.

Item	Qty.	Description Variation No.	Part No.	Item	Qty.	Description Variation No.	Part No.
1	6	Screw, 3/8-16 x 1-3/8" 1	#				
2	6	Washer, 3/8" lock 1	#				
3	1	Pulley 1	223900				
4	1	Bearing 1	223734				
5	1	Hub 1	223901				

John Deere 6076TF and 6076AF

Group 2f Fan Drive



RGP 3214

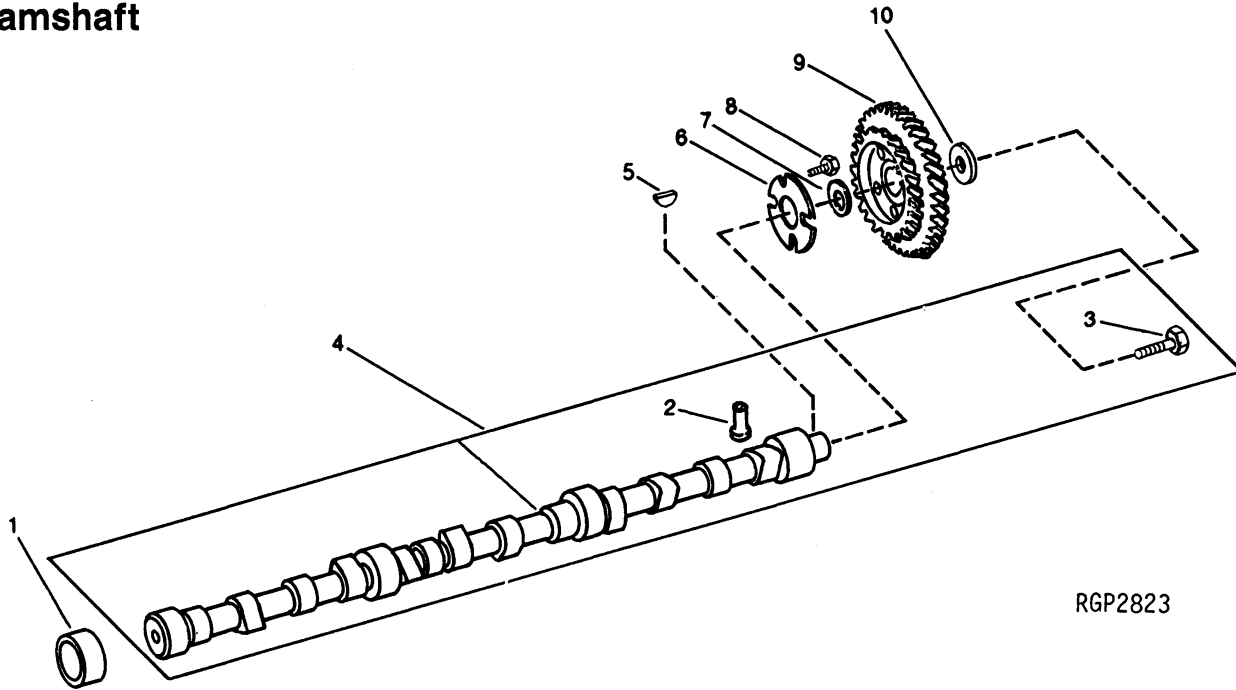
Reproduced by permission of Deere & Company,
© 1988 Deere & Company All rights reserved.

Item	Qty.	Description Variation No.	Part No.	Item	Qty.	Description Variation No.	Part No.
1	6	Screw, 3/8-16 x 1-3/8" 2	#				
2	6	Washer, 3/8" lock 2	#				
3	1	Pulley 2	223915				
4	1	Bearing 2	223734				
5	1	Hub 2	223735				

Common Hardware, Procure Locally
X Not Sold Separately

John Deere 6076TF and 6076AF

Group 4a Camshaft



RGP2823

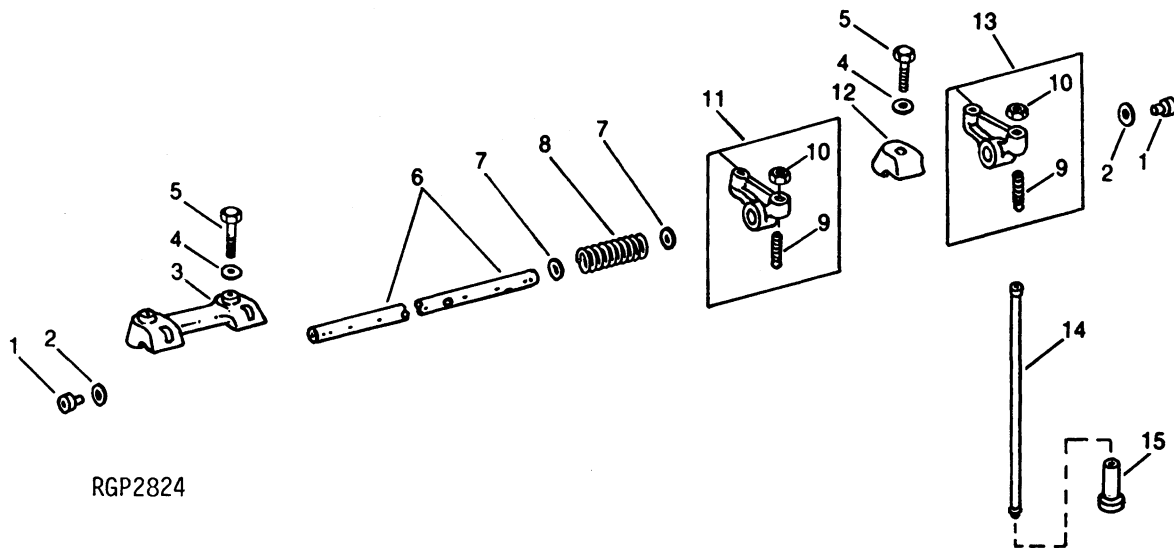
Reproduced by permission of Deere & Company,
© 1988 Deere & Company All rights reserved.

Item	Qty.	Description Variation No.	Part No.	Item	Qty.	Description Variation No.	Part No.
1	4	Bushing 1	223889				
2	12	Follower, cam 1	223906				
3	1	Screw, 9/16-12 x 4-1/8" cap 1	#				
4	1	Camshaft 1	223960				
5	1	Key, 1/8 x 5/8" shaft 1	223407				
6	1	Washer, thrust 1	223872				
7	1	Washer 1	223873				
8	3	Screw, 5/16-18 x 5/8" 1	#				
9	1	Gear (matched set) 1	223950				
10	1	Washer 1	223874				

Common Hardware, Procure Locally
X Not Sold Separately

John Deere 6076TF and 6076AF

Group 4b Rocker Arms



RGP2824

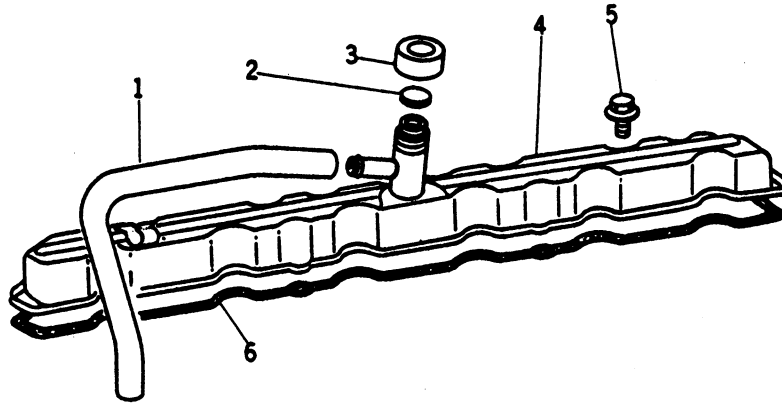
Reproduced by permission of Deere & Company,
© 1988 Deere & Company All rights reserved.

Item	Qty.	Description Variation No.	Part No.	Item	Qty.	Description Variation No.	Part No.
1	2	Plug 1	223480	11	6	Arm, rocker 1	223936
2	2	Washer 1	223740	12	2	Clamp, rocker arm (single) 1	223745
3	2	Clamp, rocker arm (dual) 1	223832	13	6	Arm, rocker 1	223937
4	6	Washer 1	223743	14	12	Rod, push 1	223877
5	6	Screw, 7/16-14 x 1-3/4" 1	#	15	12	Follower, cam 1	223906
6	1	Shaft, rocker arm 1	223843				
7	10	Washer 1	223844				
8	5	Spring 1	223739				
9	12	Screw, set 1	223749				
10	12	Nut, 3/8-16 1	#				

Common Hardware, Procure Locally
X Not Sold Separately

John Deere 6076TF and 6076AF

Group 4c Rocker Arm Cover



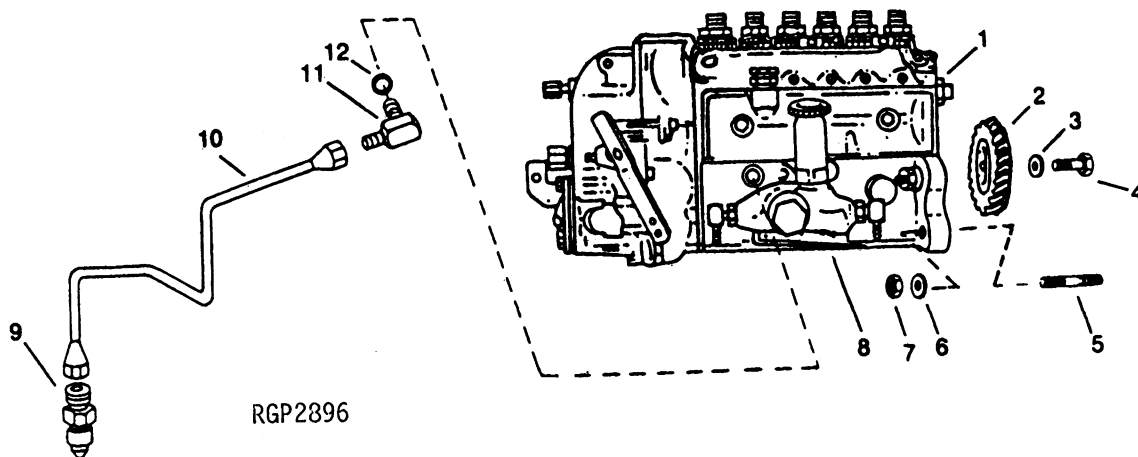
RG1569

Reproduced by permission of Deere & Company,
© 1988 Deere & Company All rights reserved.

Item	Qty.	Description Variation No.	Part No.	Item	Qty.	Description Variation No.	Part No.
1			not used				
2	1	Gasket 1	223636				
3	1	Cap 1	223630				
4	1	Cover 1	223714				
5	6	Screw, w/washer 1	#				
6	1	Gasket 1	223771				

John Deere 6076TF and 6076AF

Group 5a Fuel Injection Pump



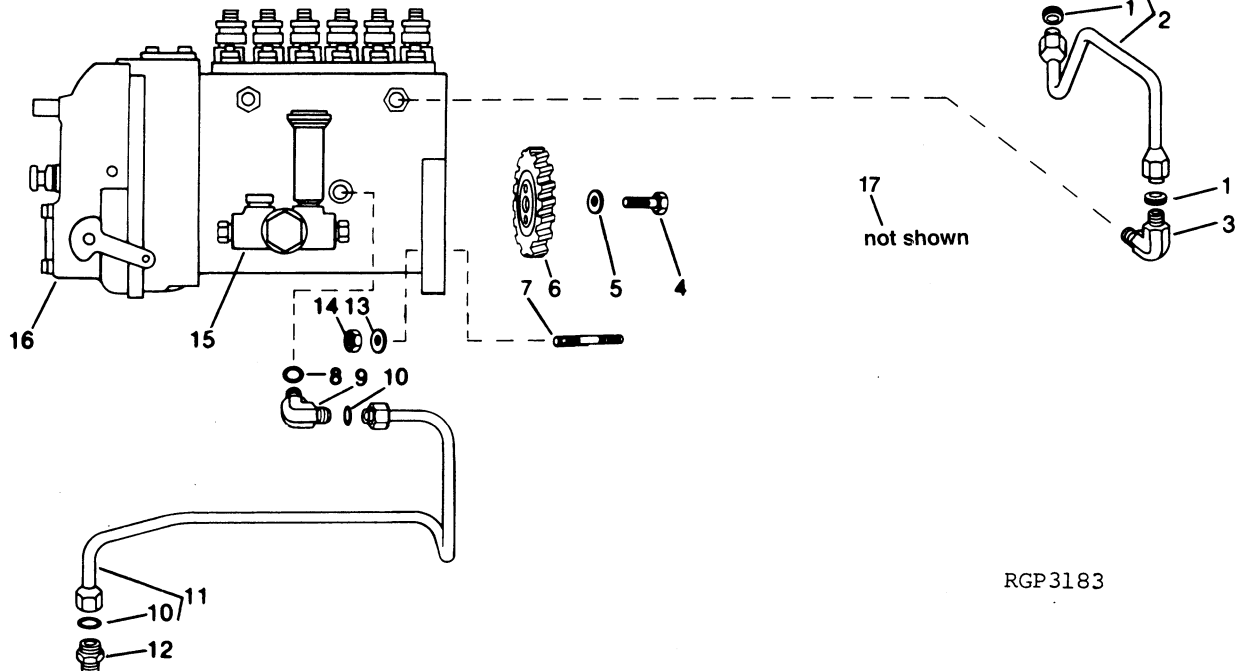
Reproduced by permission of Deere & Company,
© 1988 Deere & Company All rights reserved.

Item	Qty.	Description Variation No.	Part No.	Item	Qty.	Description Variation No.	Part No.
1	1	Injection pump, fuel 1	223970	11	1	Fitting, elbow 1	223447
2	1	Gear (matched set) 1	223950	12	1	O-ring 1	223862
3	4	Washer 1	223821				
4	4	Bolt 1	#				
5	4	Stud 1	#				
6	4	Washer 1	#				
7	4	Nut, 3/8-16 grade 8 1	#				
8	1	Pump, fuel (transfer) 1	223973				
9	1	Adapter 1	223751				
10	1	Line 1	223713				

Common Hardware, Procure Locally
X Not Sold Separately

John Deere 6076TF and 6076AF

Group 5a Fuel Injection Pump



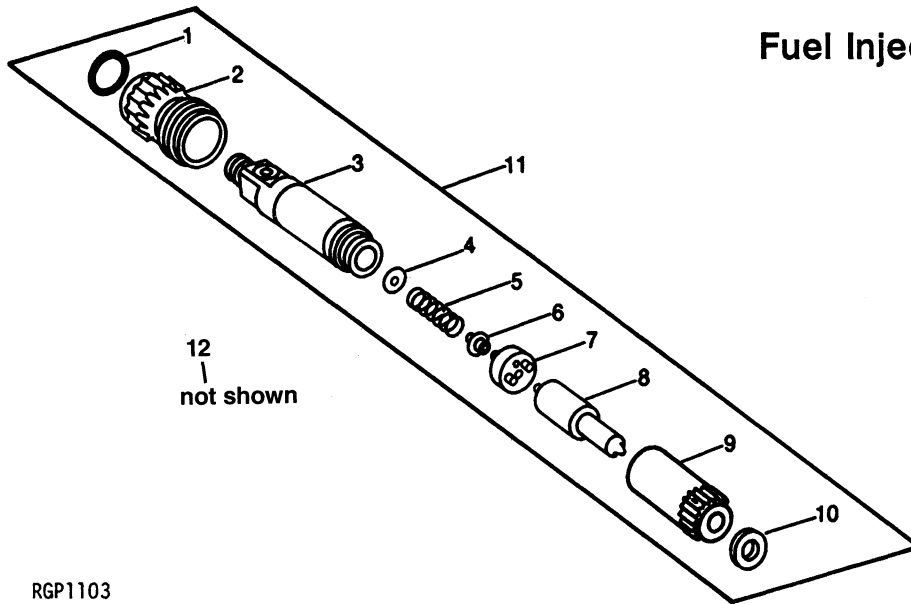
RGP3183

Reproduced by permission of Deere & Company,
© 1988 Deere & Company All rights reserved.

Item	Qty.	Description Variation No.	Part No.	Item	Qty.	Description Variation No.	Part No.
1	2	Packing (seal) 2,3	223476	11	1	Line, oil 2,3	223978
2	1	Line, fuel 2,3	223975	12	1	Fitting 2,3	223857
3	1	Fitting 2,3	223837	13	4	Washer 2,3	#
4	4	Bolt, 3/8-16 x 7/8" 2,3	#	14	4	Nut 2,3	#
5	4	Washer 2,3	#	15	1	Pump, fuel (transfer) 2,3	223976
6	1	Gear 2,3	223838	16	1	Pump, fuel injection 2	223981
7	4	Stud 2,3	#	1	1	Pump, fuel injection 3	223980
8	1	O-ring 2,3	223862	17	1	Valve 2,3	223924
9	1	Fitting, elbow 2,3	223712				
10	2	Packing (seal) 2,3	223836				

John Deere 6076TF and 6076AF

Group 5b Fuel Injection Nozzle



RGPI1103

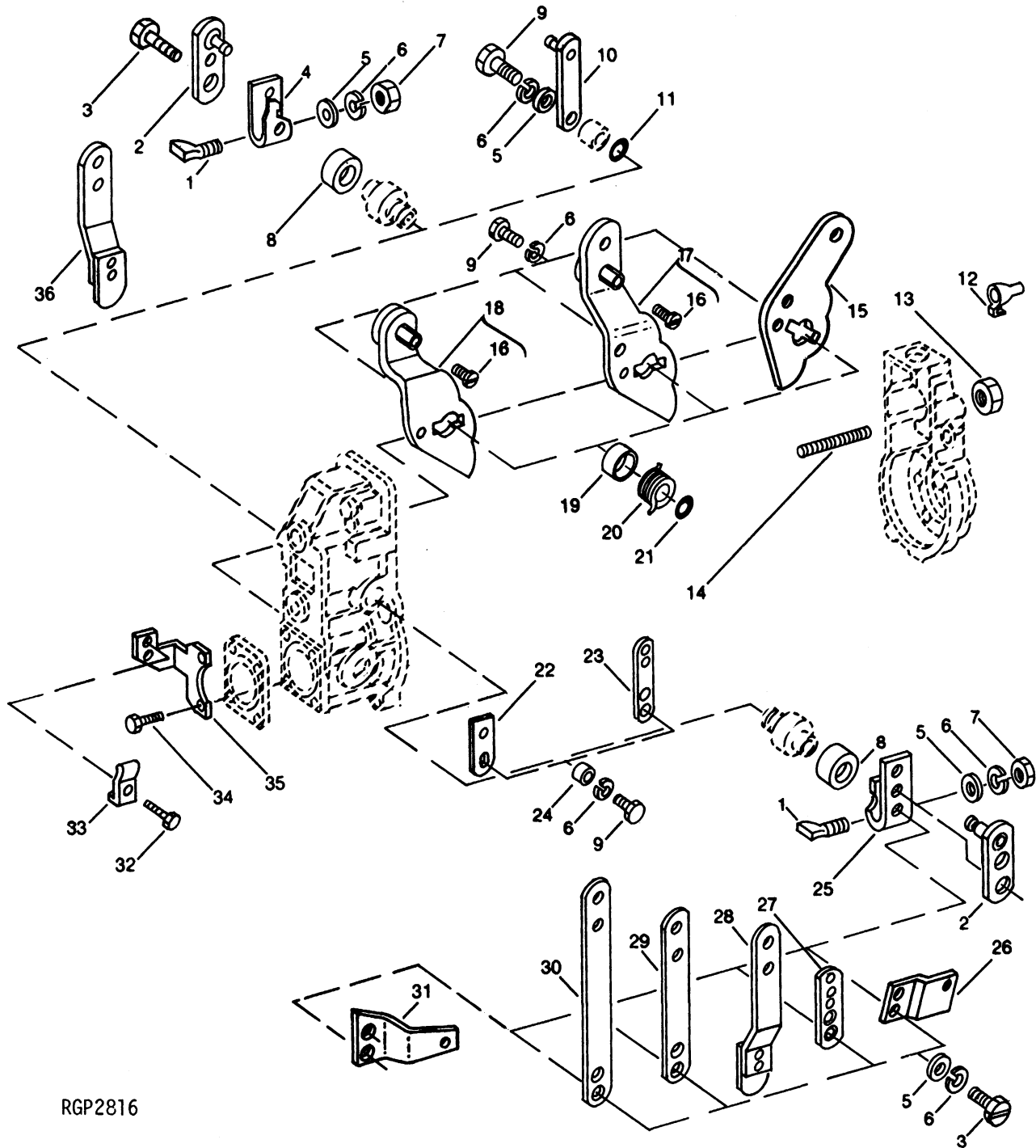
Reproduced by permission of Deere & Company,
© 1988 Deere & Company All rights reserved.

Item	Qty.	Description Variation No.	Part No.	Item	Qty.	Description Variation No.	Part No.
1	1	Ring 1,2,3	223788	AR		Shim .055" (1.4 mm) 1,2,3	X
2	1	Nut 1,2,3	X	AR		Shim .057" (1.45 mm) 1,2,3	X
3	1	Holder, nozzle 1	X	AR		Shim .059" (1.5 mm) 1,2,3	X
	1	Holder, nozzle 2,3	X	5	1	Spring 1,2,3	X
4	AR	Shim .030" (.75 mm) 1,2,3	X	6	1	Guide 1,2,3	X
	AR	Shim .032" (.80 mm) 1,2,3	X	7	1	Plate 1,2,3	X
	AR	Shim .034" (.85 mm) 1,2,3	X	8	1	Nozzle, injection 1,2	X
	AR	Shim .035" (.90 mm) 1,2,3	X	1		Nozzle, injection 3	X
	AR	Shim .037" (.95 mm) 1,2,3	X	9	1	Nut 1,2,3	X
	AR	Shim .039" (1.0 mm) 1,2,3	X	10	1	Washer 1,2,3	X
	AR	Shim .041" (1.05 mm) 1,2,3	X	11	6	Nozzle assembly, injection 1,2	223965
	AR	Shim .043" (1.1 mm) 1,2,3	X	6		Nozzle assembly, injection 3	223941
	AR	Shim .045" (1.15 mm) 1,2,3	X	12	1	Ring, fuel injection 1,2,3	223841
	AR	Shim .047" (1.2 mm) 1,2,3	X				
	AR	Shim .049" (1.25 mm) 1,2,3	X				
	AR	Shim .051" (1.3 mm) 1,2,3	X				
	AR	Shim .053" (1.35 mm) 1,2,3	X				

Common Hardware, Procure Locally
X Not Sold Separately

John Deere 6076TF and 6076AF

Group 5c Fuel Injection Pump Governor Levers



RGP2816

Reproduced by permission of Deere & Company,
© 1988 Deere & Company All rights reserved.

Common Hardware, Procure Locally
X Not Sold Separately

John Deere 6076TF and 6076AF

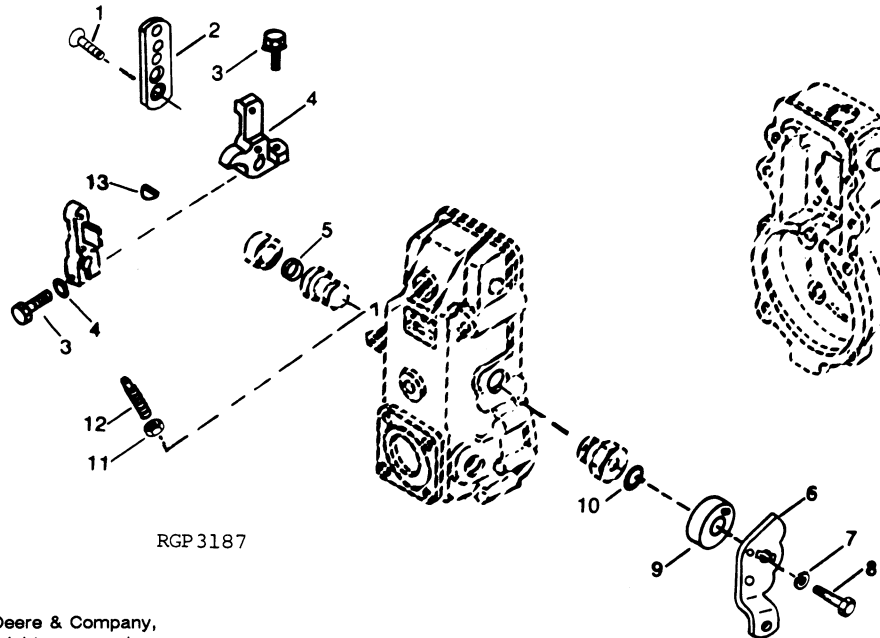
Group 5c Fuel Injection Pump Governor Levers

Item	Qty.	Description Variation No.	Part No.	Item	Qty.	Description Variation No.	Part No.
1	1	Pin 1	X	21	1	O-ring 1	X
2	1	Lever 1	X	22	1	Lever 1	X
3	2	Screw, M6 x 16 1	#	23	1	Lever 1	X
4	1	Lever 1	X		1	Lever 1	X
5	1	Washer, (6.4 x 12.5 x 1.6 mm) 1	#	24	1	Spacer 1	X
6	2	Washer, lock 1	#	25	1	Lever 1	X
7	1	Nut 1	#	26	1	Lever 1	X
8	1	Seal 1	X	27			not used
9	1	Screw 1	#	28	1	Lever 1	X
10	1	Screw, cap 1	X	29	1	Lever 1	X
11	1	O-ring 1	X	30	1	Lever, throttle 1	X
12	1	Packing (seal) 1	X	31	1	Lever 1	X
13	1	Nut 1	#	32	1	Screw 1	X
14	1	Screw, set 1	#	33	1	Clip 1	X
15	1	Lever 1	X	34	1	Screw, cap 1	X
16	1	Screw 1	#	35	1	Bracket 1	X
17	1	Lever 1	X	36	1	Lever 1	X
18	1	Lever 1	X				
19	1	Retainer 1	X				
20	1	Spring 1	X				

Common Hardware, Procure Locally
X Not Sold Separately

John Deere 6076TF and 6076AF

Group 5c Fuel Injection Pump Governor Levers



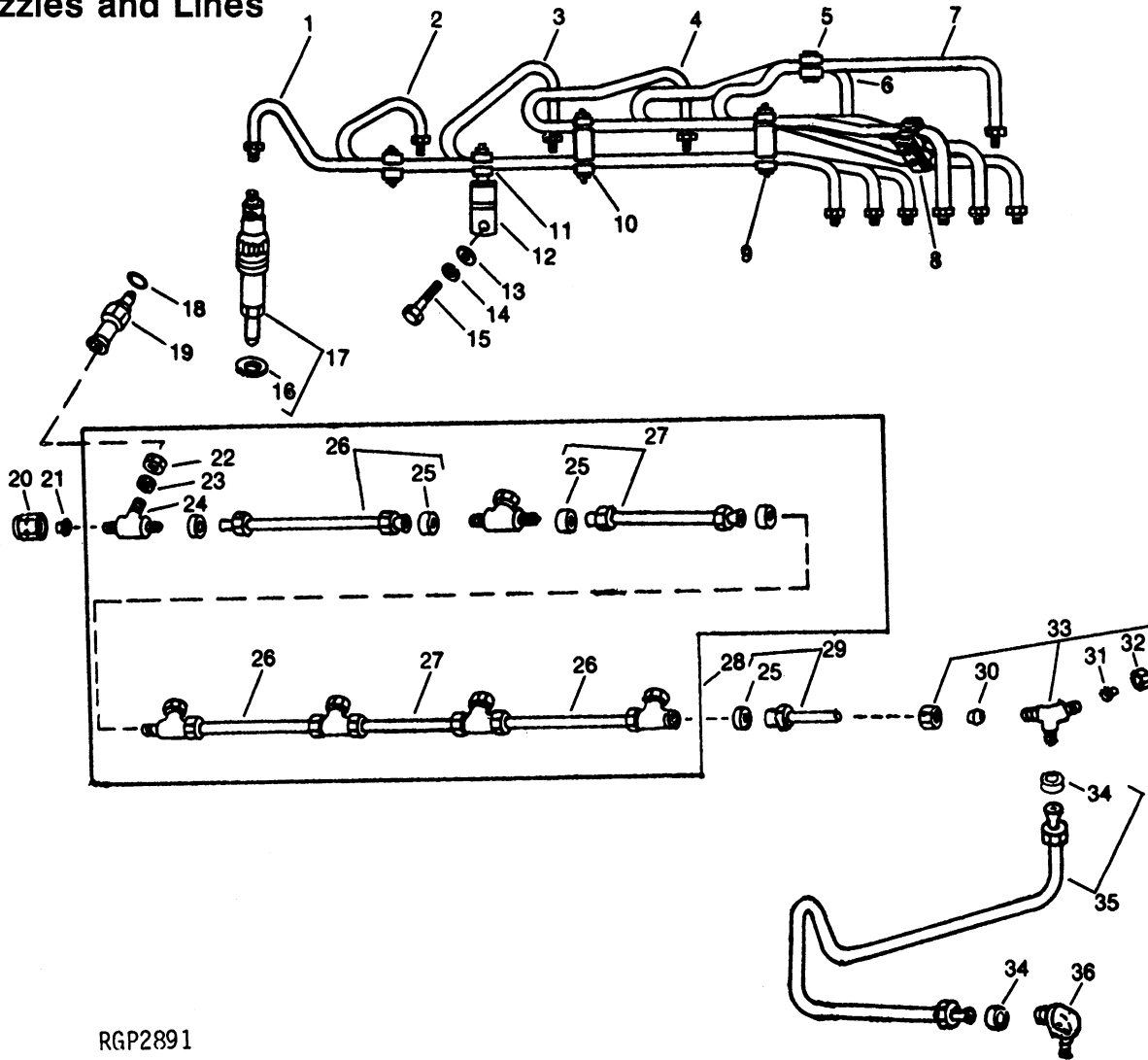
Reproduced by permission of Deere & Company,
© 1988 Deere & Company All rights reserved.

Item	Qty.	Description Variation No.	Part No.	Item	Qty.	Description Variation No.	Part No.
1	2	Screw, M6 x 16 2	#	11	1	Nut, lock 2	#
2	1	Lever 2	X	12	1	Screw, set 2	#
3	2	Screw 2	#	13	1	Key, shaft 2	#
4	1	Lever 2	X				
5	1	Seal 2	X				
6	1	Lever 2	X				
7	2	Washer, lock 2	#				
8	1	Screw 2	#				
9	1	Retainer 2	X				
10	1	O-ring 2	X				

NOTES

John Deere 6076TF and 6076AF

Group 5d Fuel Injection Nozzles and Lines



RGP2891

Reproduced by permission of Deere & Company,
© 1988 Deere & Company All rights reserved.

Item	Qty.	Description Variation No.	Part No.	Item	Qty.	Description Variation No.	Part No.
1	1	Line, fuel no. 6 1	223672	5	2	Strap 1	223811
2	1	Line, fuel no. 5 1	223671	4	1	Clamp 1	223808
3	1	Line, fuel no. 4 1	223670	2	1	Strap 1	223812
4	1	Line, fuel no. 3 1	223669	2	1	Screw, 10-24 x 7/8" 1	#
				6	1	Line, fuel no. 2 1	223668

Common Hardware, Procure Locally
X Not Sold Separately

John Deere 6076TF and 6076AF

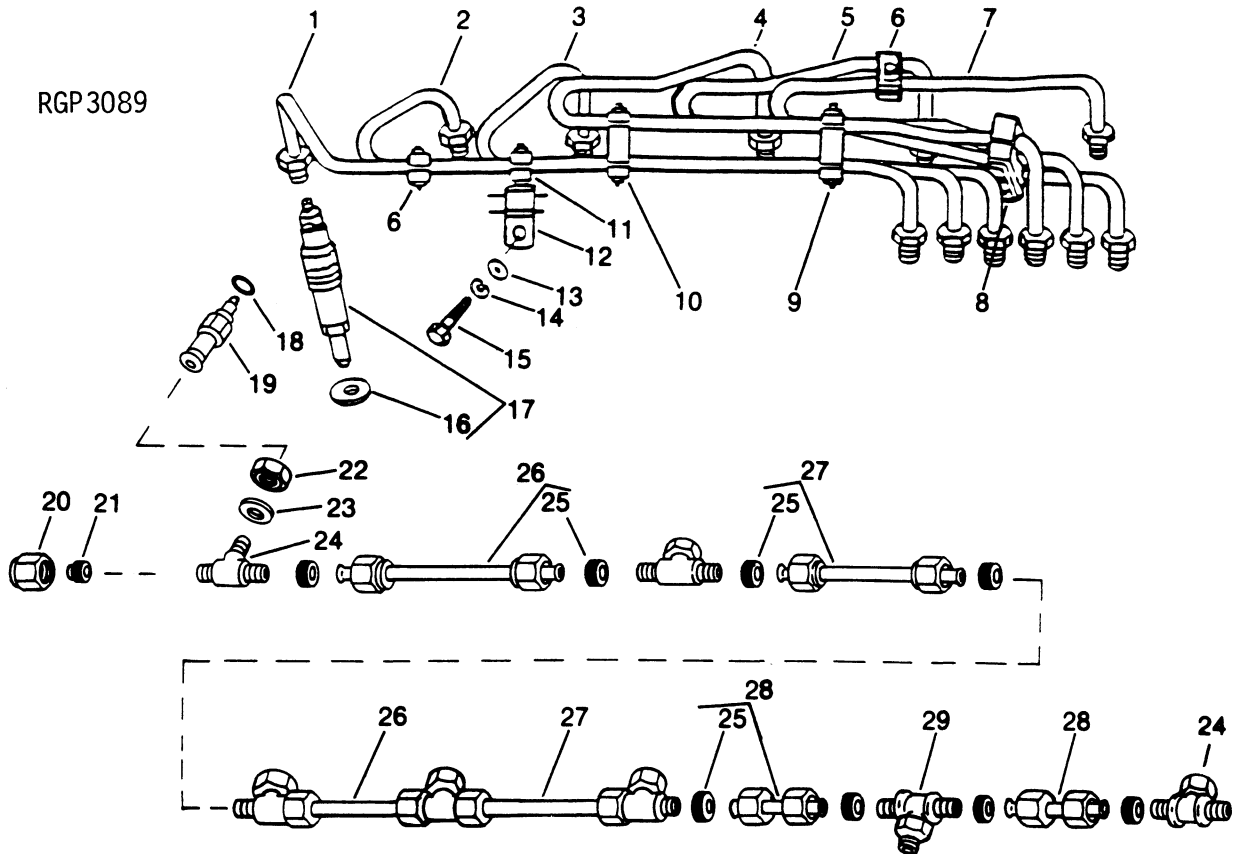
Group 5d Fuel Injection Nozzles and Lines

Item	Qty.	Description Variation No.	Part No.	Item	Qty.	Description Variation No.	Part No.
7	1	Line, fuel no. 1 1	223667	18	6	O-ring 1	223858
8	1	Strap 1	223810	19	6	Fitting (requires Item 18) 1	223887
	2	Clamp, half 1	223809	20	1	Fitting 1	223477
	1	Strap 1	223813	21	1	Plug 1	223710
	2	Screw, 10-24 x 7/8" 1	#	22	6	Nut 1	223517
9	1	Strap 1	223810	23	6	Sleeve 1	223518
	1	Clamp 1	223845	24	6	Fitting, tee 1	223519
	2	Clamp, half 1	223809	25	11	Packing (seal) 1	223476
	1	Strap 1	223813	26	3	Line, fuel 1	223929
	2	Screw, 10-24 x 1-1/2" 1	#	27	2	Line, fuel 1	223930
10	1	Strap 1	223811	28	1	Line, fuel (req. Items 29 & 30) 1	223954
	1	Clamp 1	223808	29	1	Line, fuel 1	223935
	1	Clamp 1	223854	30	2	Sleeve 1	223863
	1	Clamp 1	223855	31	1	Plug 1	223710
	1	Strap 1	223812	32	1	Fitting 1	223477
	1	Screw, 10-24 x 1-1/2" 1	#	33	1	Fitting, tee 1	223711
11	1	Strap 1	223810	34	2	Packing (seal) 1	223476
	2	Clamp, half 1	223809	35	1	Line, fuel 1	223923
	2	Screw, 10-24 x 7/8" 1	#	36	1	Fitting 1	223837
12	1	Absorber 1	223925				
13	1	Washer, 13/32 x 13/16 x .06" 1	#				
14	1	Washer, 10 mm lock 1	#				
15	1	Screw, M10 x 20 1	#				
16	6	Washer, 19/64 x 23/32 x .079" 1 (7.4 x 18.2 x 2 mm)	X				
17	6	Nozzle, injection 1	223965				

Common Hardware, Procure Locally
X Not Sold Separately

John Deere 6076TF and 6076AF

Group 5d Fuel Injection Nozzles and Lines



Reproduced by permission of Deere & Company,
© 1988 Deere & Company All rights reserved.

Item	Qty.	Description Variation No.	Part No.	Item	Qty.	Description Variation No.	Part No.
1	1	Line, fuel no. 6 2,3	223948	3	1	Line, fuel no. 4 2,3	223946
2	1	Line, fuel no. 5 2,3	223947	4	1	Line, fuel no. 3 2,3	223945

John Deere 6076TF and 6076AF

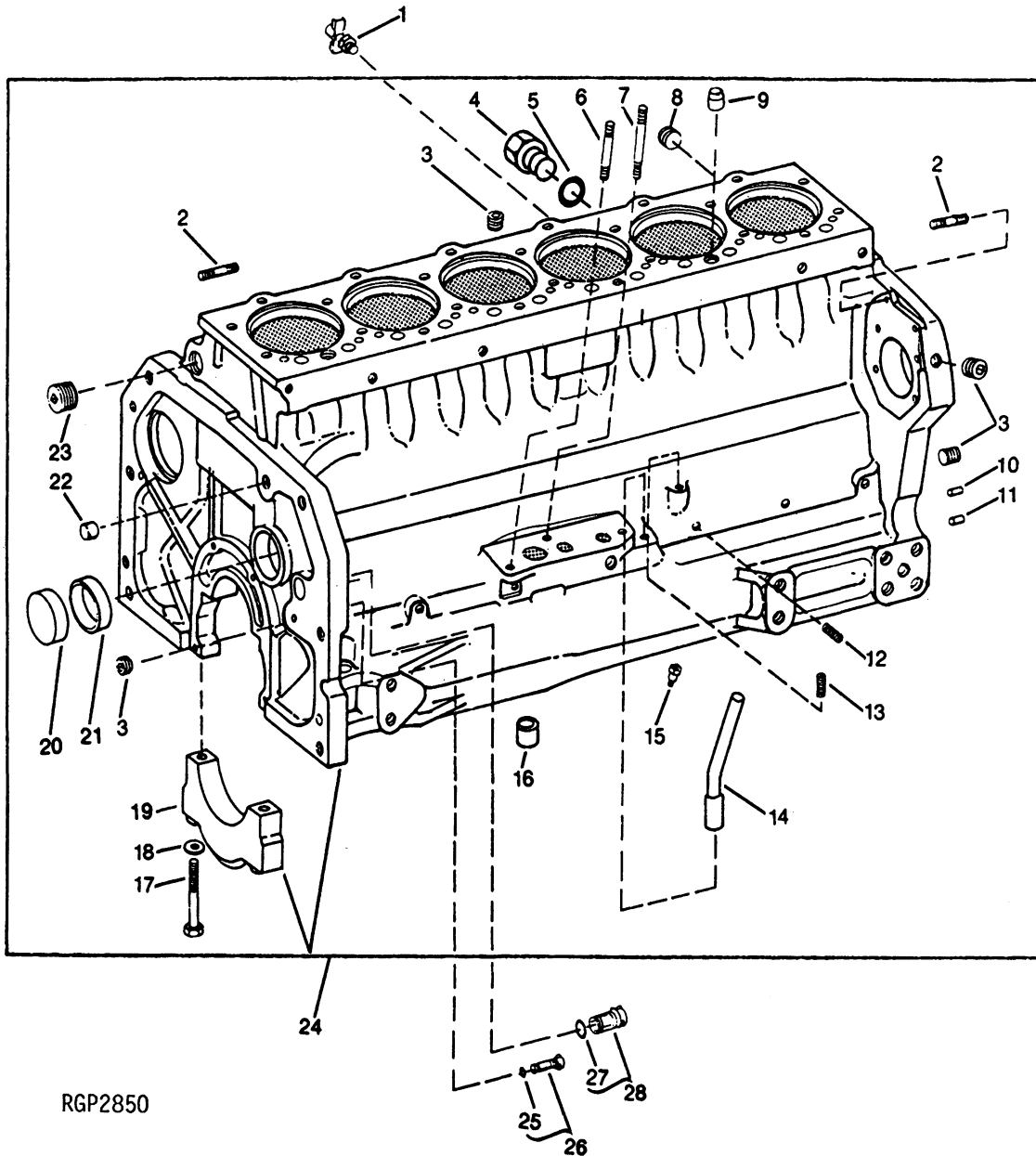
Group 5d Fuel Injection Nozzles and Lines

Item	Qty.	Description Variation No.	Part No.	Item	Qty.	Description Variation No.	Part No.
5	2	Strap 2,3	223811	14	1	Washer, 10 mm 2,3	#
	4	Clamp 2,3	223808	15	1	Screw, M10 x 20 mm 2,3	#
	2	Strap 2,3	223812	16	6	Washer, 19/64 x 23/32 x .08" 2,3 (7.4 x 18.2 x 2 mm)	X
	2	Screw, 10-24 x 7/8" 2,3	#	17	6	Nozzle, injection 2	223965
6	1	Line, fuel no. 2 2,3	223944	6	6	Nozzle, injection 3	223941
7	1	Line, fuel no. 1 2,3	223943	18	6	O-ring 2,3	223858
8	1	Strap 2,3	223810	19	6	Fitting 2,3	223887
	2	Clamp, half 2,3	223809	20	1	Fitting 2,3	223477
	1	Strap 2,3	223813	21	1	Plug 2,3	223710
	2	Screw, 10-24 x 7/8" 2,3	#	22	6	Nut 2,3	223517
9	1	Strap 2,3	223810	23	6	Sleeve 2,3	223518
	1	Clamp 2,3	223845	24	6	Fitting, tee 2,3	223519
	2	Clamp, half 2,3	223809	25	12	Packing (seal) 2,3	223476
	1	Strap 2,3	223813	26	2	Line, fuel 2,3	223929
	2	Screw, 10-24 x 1-1/2" 2,3	#	27	2	Line, fuel 2,3	223930
10	1	Strap 2,3	223811	28	2	Line, fuel 2,3	223974
	1	Clamp 2,3	223808	29	1	Fitting, tee 2,3	223912
	1	Clamp 2,3	223854				
	1	Clamp 2,3	223855				
	1	Strap 2,3	223812				
	1	Screw, 10-24 x 1-1/2" 2,3	#				
11	1	Strap 2,3	223810				
	2	Clamp, half 2,3	223809				
	2	Screw, 10-24 x 7/8" 2,3	#				
12	1	Absorber 2,3	223925				
13	1	Washer, 13/32 x 13/16 x .06" 2,3	#				

Common Hardware, Procure Locally
X Not Sold Separately

John Deere 6076TF and 6076AF

Group 7 Cylinder Block



RG2850

Reproduced by permission of Deere & Company,
© 1988 Deere & Company All rights reserved.

Common Hardware, Procure Locally
X Not Sold Separately

John Deere 6076TF and 6076AF

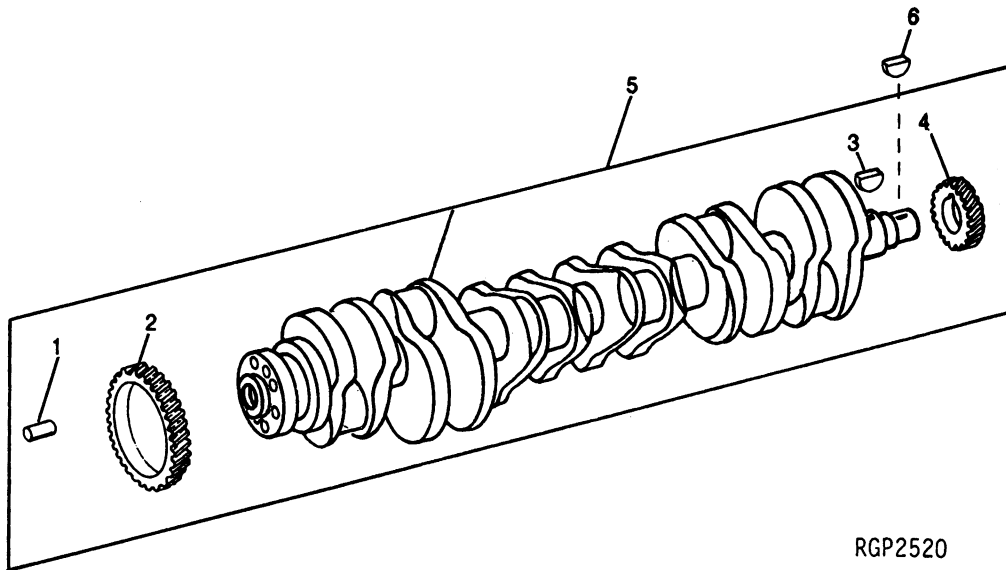
Group 7 Cylinder Block

Item	Qty.	Description Variation No.	Part No.	Item	Qty.	Description Variation No.	Part No.
1	1	Valve, drain 1,2	223435	21	4	Bushing 1,2	223889
2	5	Stud 1,2	#	22	1	Pin, dowel 1,2	223814
3	4	Plug, 1/2NPT pipe 1,2	#	23	1	Plug, 1" pipe 1,2	#
4	1	Plug, drain 1,2	223462	24	1	Block, cylinder 1	223964
5	1	O-ring 1,2	223988	24	1	Block, cylinder 2	223963
6	1	Stud 1,2	#	25	1	O-ring 1,2	223665
7	1	Stud 1,2	#	26	1	Plug 1,2	223684
8	1	Plug, 3/4NPT pipe 1,2	#	27	1	O-ring 1,2	223747
9	2	Bushing 1,2	223755	28	1	Plug 1,2	223683
10	4	Pin, dowel 1,2	223737				
11	2	Pin, dowel 1,2	223731				
12	6	Plug, 1/8NPT pipe 1,2	#				
13	1	Plug, pipe 1,2	#				
14	1	Tube 1,2	223688				
15	6	Orifice 1,2	X				
16	2	Bushing 1,2	X				
17	14	Bolt 1,2	#				
18	14	Washer 1,2	#				
19	6	Cap, main bearing 1,2	223804				
	1	Cap, thrust bearing 1,2	223805				
20	1	Cap 1,2	223866				

Common Hardware, Procure Locally
X Not Sold Separately

John Deere 6076TF and 6076AF

Group 8a Crankshaft

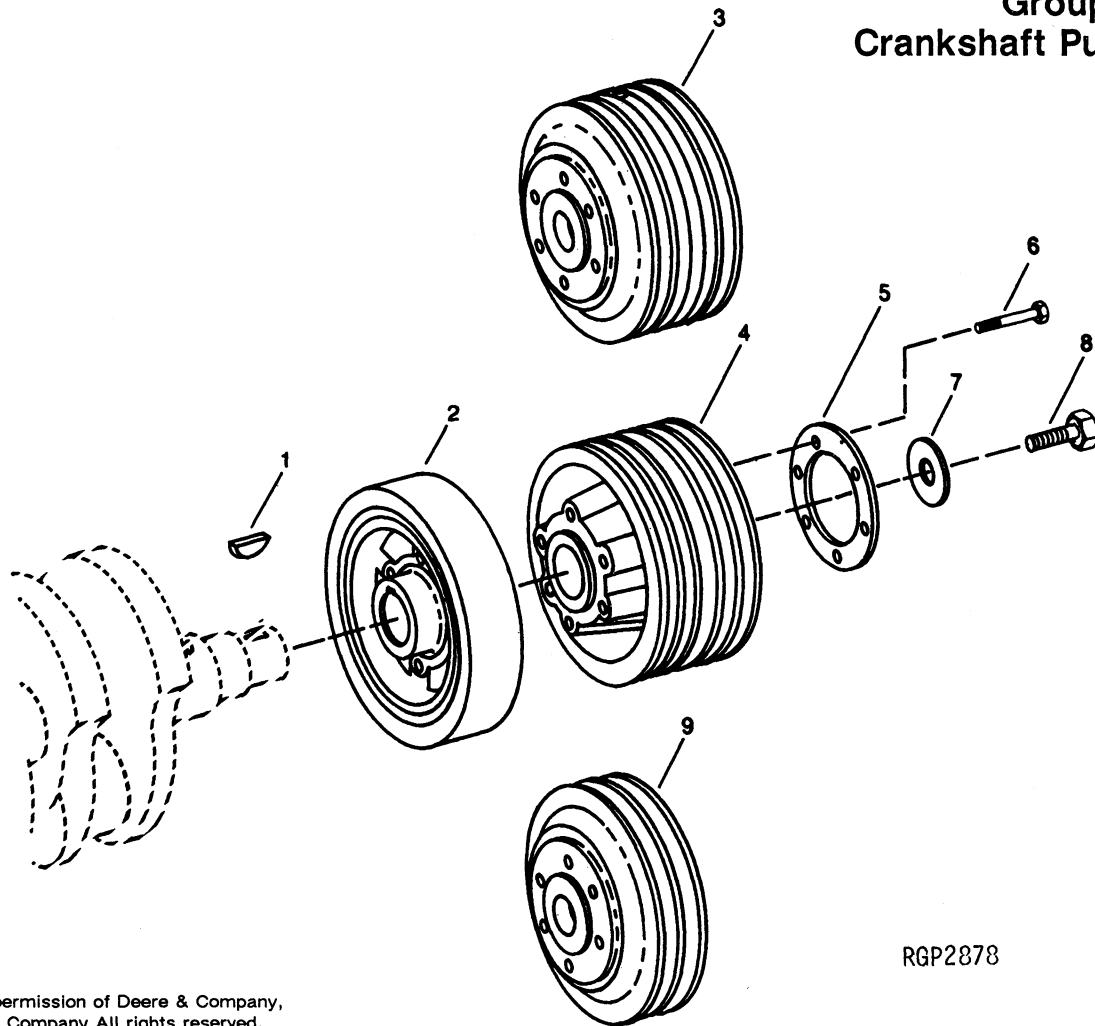


Reproduced by permission of Deere & Company,
© 1988 Deere & Company All rights reserved.

Item	Qty.	Description Variation No.	Part No.	Item	Qty.	Description Variation No.	Part No.
1	1	Pin, dowel 1	223754				
2	1	Gear 1	223819				
3	1	Key, 1/8 x 5/8" shaft 1	#				
4	1	Gear 1	223884				
5	1	Crankshaft 1	223955				
6	1	Key, 1/4 x 1" shaft 1	#				

John Deere 6076TF and 6076AF

Group 8b Crankshaft Pulley



RGP2878

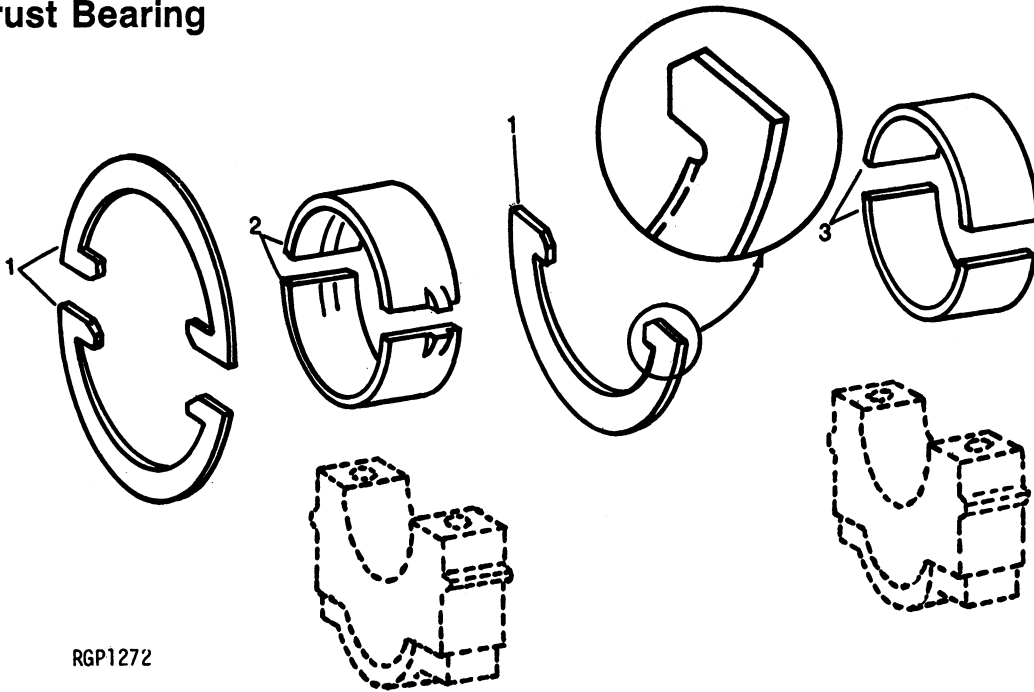
Reproduced by permission of Deere & Company,
© 1988 Deere & Company All rights reserved.

Item	Qty.	Description Variation No.	Part No.	Item	Qty.	Description Variation No.	Part No.
1	1	Key, shaft 1/4 x 1" 1	#	6	6	Screw, 3/8-16 x 1-3/8" 1	#
2	1	Dampner, torsional 1	223940	7	1	Washer, 21/32 x 2-1/4 x 3/8" 1 (16.6 x 57.2 x 9.5 mm)	#
3			not used	8	1	Screw, 5/8-11 x 2" 1	#
4			not used	9	1	Pulley 1	223908
5			not used				

Common Hardware, Procure Locally
X Not Sold Separately

John Deere 6076TF and 6076AF

Group 8c Main Thrust Bearing



RGP1272

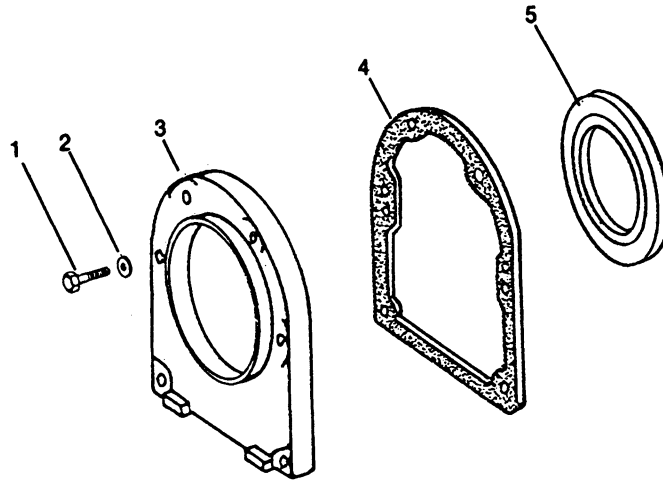
Reproduced by permission of Deere & Company,
© 1988 Deere & Company All rights reserved.

Item	Qty.	Description Variation No.	Part No.	Item	Qty.	Description Variation No.	Part No.
1	1	Washer, thrust std. (3)	223701				
	1	Washer, thrust .007"	223707				
	1	(.18 mm) O/S (2)					
2	1	Bearing, thrust std.	223702				
	1	Bearing, thrust .002"	223703				
	1	(.05 mm) U/S					
	1	Bearing, thrust .010"	223704				
	1	(.25 mm) U/S					
	1	Bearing, thrust .020"	223705				
	1	(.51 mm) U/S					
	1	Bearing, thrust .030"	223706				
	1	(.76 mm) U/S					
3	AR	Bearing std.	223696				
	1	Bearing .002" (.05 mm) U/S	223697				
	1	Bearing .010" (.25 mm) U/S	223698				
	1	Bearing .020" (.51 mm) U/S	223699				
	1	Bearing .030" (.76 mm) U/S	223700				

Common Hardware, Procure Locally
X Not Sold Separately

John Deere 6076TF and 6076AF

Group 8d Crankshaft Oil Seal



RGP2382

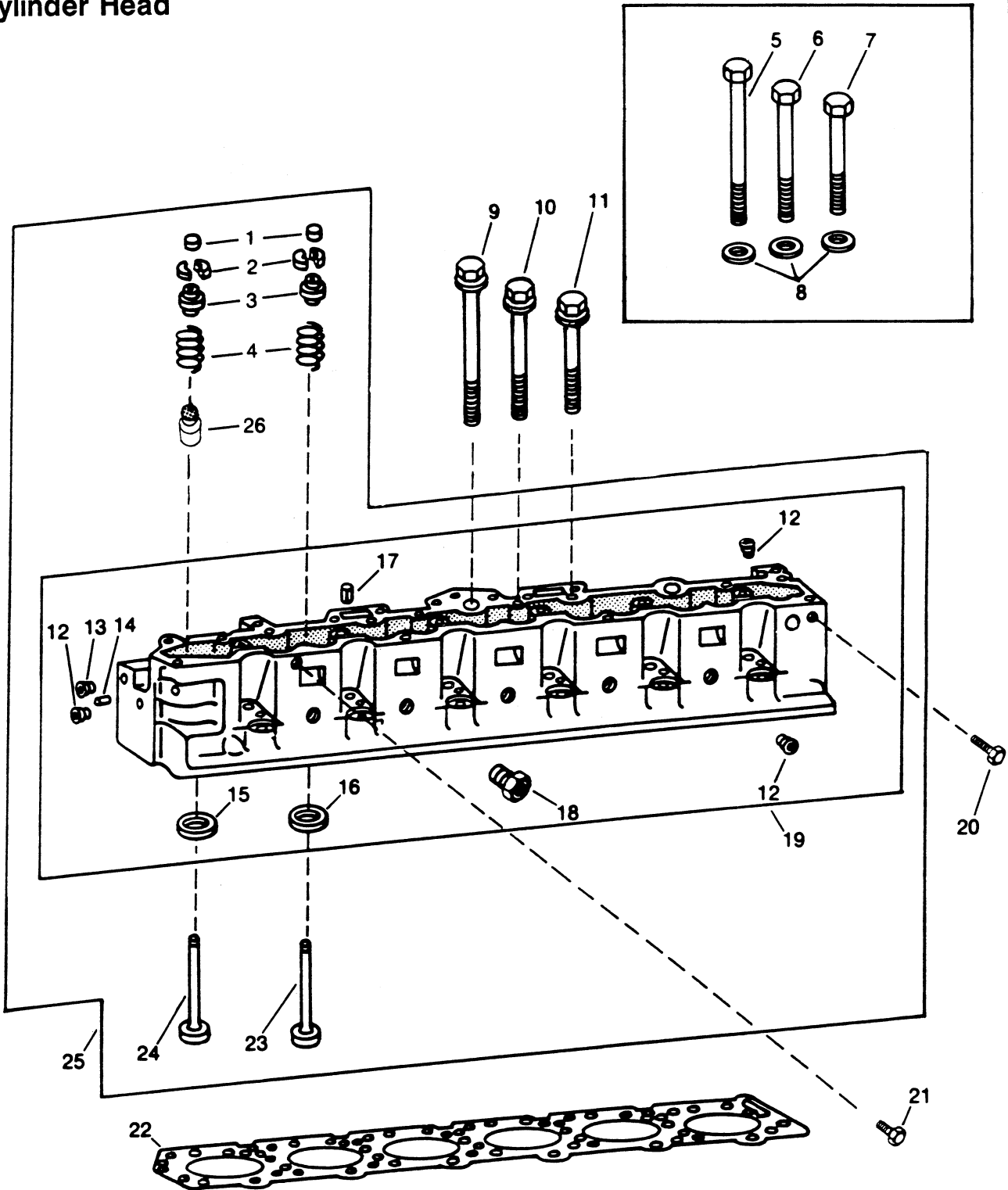
Reproduced by permission of Deere & Company,
© 1988 Deere & Company All rights reserved.

Item	Qty.	Description Variation No.	Part No.	Item	Qty.	Description Variation No.	Part No.
1	6	Screw, 5/16-18 x 1-1/8" 1	#				
2	6	Washer, 11/32 x 11/16 x .065" 1	#				
3	1	Housing 1	223860				
4	1	Gasket 1	223738				
5	1	Seal 1	223933				

Common Hardware, Procure Locally
X Not Sold Separately

John Deere 6076TF and 6076AF

Group 9 Cylinder Head



RGP3204

Reproduced by permission of Deere & Company,
© 1988 Deere & Company All rights reserved.

John Deere 6076TF and 6076AF

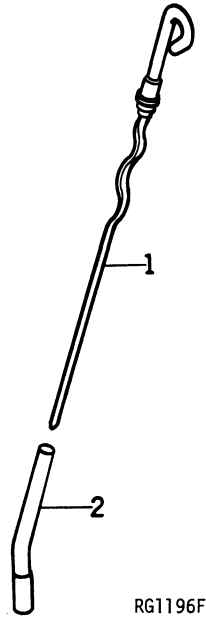
Group 9 Cylinder Head

Item	Qty.	Description Variation No.	Part No.	Item	Qty.	Description Variation No.	Part No.
1	12	Cap 1	223617	20	2	Screw, 5/8-11 x 1-1/2" 1	#
2	24	Retainer 1	223612	21			not used
3	12	Rotator 1	223563	22	1	Gasket 1	223801
4	12	Spring 1	223905	23	6	Valve, intake (std.) 1	223869
5	7	Screw, 9/16-12 x 7-1/2" (early) 1	#	6	Valve, intake .003" (.08 mm) 1	224136	
6	8	Screw, 9/16-12 x 6-3/8" (early) 1	#	6	Valve, intake .015" (.38 mm) 1	224149	
7	11	Screw, 9/16-12 x 5-3/8" (early) 1	#	6	Valve, Intake .030" (.76 mm) 1	224142	
8	26	Washer, 37/64 x 1 x .105" (early) 1 (14.7 x 25.4 x 2.6 mm)	#	24	6	Valve, exhaust (std.) 1	223870
9	7	Screw, cyl. .715 x 7.402" (newer) 1	224138	6	Valve, exhaust .003" (.08 mm) 1	224134	
10	8	Screw, cyl. .715 x 6.280" (newer) 1	224144	6	Valve, exhaust .015" (.38 mm) 1	224143	
11	11	Screw, cyl. .715 x 5.280" (newer) 1	224141	6	Valve, exhaust .030" (.76 mm) 1	224135	
12	6	Plug, 3/4NPT pipe 1	#	25a	1	Head, cylinder (early) 1	223961
13	3	Plug, 1/2NPT pipe 1	#	25b	1	Head, cylinder (newer) 1	224137
14	1	Pin, dowel 1	223731	26	6	Shield (newer model only) 1	224140
15	6	Insert, intake valve seat (std.) 1	223875	<p>NOTE: For engines with serial no. before 101978, use Items 5-8. For engines with serial no. 101978 and newer, use Items 9-11.</p> <p>For engines with serial no. before 106216, use Item 25a. For engines with serial no. 106216 and newer, use Items 25b and 26.</p>			
	6	Insert, intake valve seat .010" 1 (.25 mm) O/S	224133				
16	6	Insert, exhaust valve seat (std.) 1	223876				
	6	Insert, exhaust valve seat .010" 1 (.25 mm) O/S	224139				
17	1	Pin, 3/16 x 3/4" spring 1	#				
18	1	Plug, pipe 1	223856				
19	1	Head, cylinder 1	223951				

Common Hardware, Procure Locally
X Not Sold Separately

John Deere 6076TF and 6076AF

Group 10 Dipstick

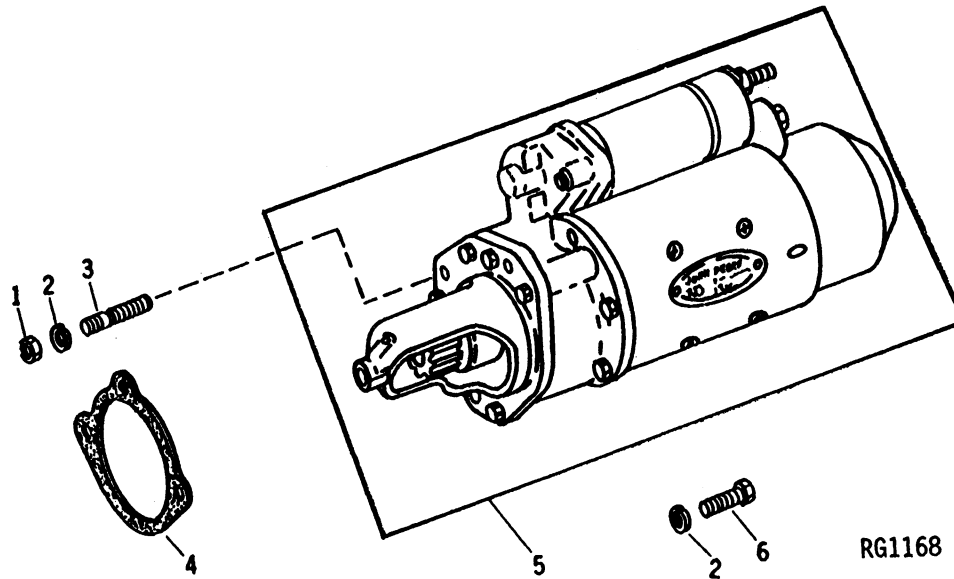


Reproduced by permission of Deere & Company,
© 1988 Deere & Company All rights reserved.

Item	Qty.	Description Variation No.	Part No.	Item	Qty.	Description Variation No.	Part No.
1	1	Dipstick 1	223695				
2	1	Tube, dipstick 1	223688				

John Deere 6076TF and 6076AF

Group 11a Starter Motor



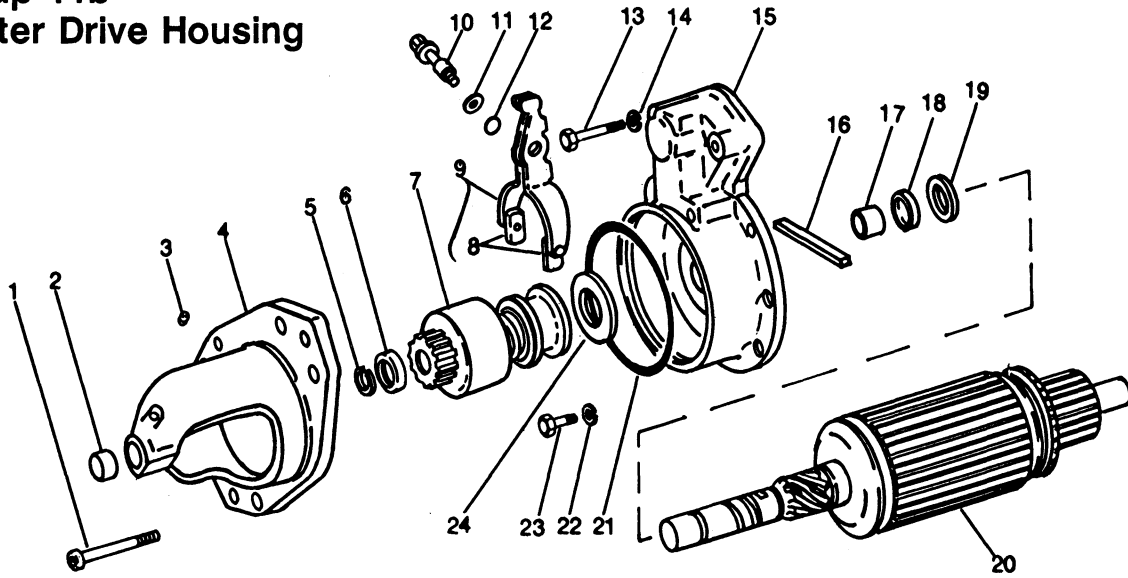
Reproduced by permission of Deere & Company,
© 1988 Deere & Company All rights reserved.

Item	Qty.	Description Variation No.	Part No.	Item	Qty.	Description Variation No.	Part No.
1	1	Nut, 3/8-16 (grade 8) 1	#				
2	3	Washer, 3/8" lock 1	#				
3	1	Stud 1	#				
4	1	Gasket 1	223791				
5	1	Starter 1	223987				
6	2	Screw, 3/8-16 x 1-3/8" cap 1	#				

Common Hardware, Procure Locally
X Not Sold Separately

John Deere 6076TF and 6076AF

Group 11b Starter Drive Housing



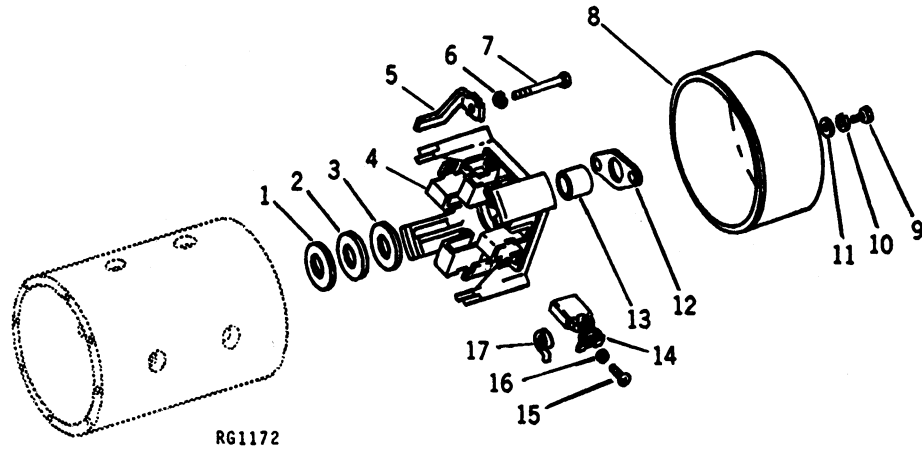
Reproduced by permission of Deere & Company,
© 1988 Deere & Company All rights reserved.

RGP1947

Item	Qty.	Description Variation No.	Part No.	Item	Qty.	Description Variation No.	Part No.
1	6	Screw 1	#	13	2	Screw 1	#
2	1	Bushing 1	X	14	2	Washer, 1/4 in. lock 1	#
3	1	Plug 1	X	15	1	Housing 1	X
4	1	Housing 1	X	16	1	Wick 1	X
5	1	Ring, snap 1	X	17	1	Bushing 1	X
6	1	Stop 1	X	18	1	Seal 1	X
7	1	Drive 1	223678	19	1	Washer, thrust 1	X
8	2	Plate, wear 1	X	20	1	Armature 1	X
9	1	Arm 1	223685	21	1	Washer 1	#
10	1	Shaft 1	X	22	2	Washer, 9/16" lock 1	#
11	1	Washer, 21/64 x 5/8 x .048" 1	#	23	2	Screw 1	#
12	1	O-ring 1	X	24	1	Ring, wear 1	X

John Deere 6076TF and 6076AF

Group 11c Starter End Frame



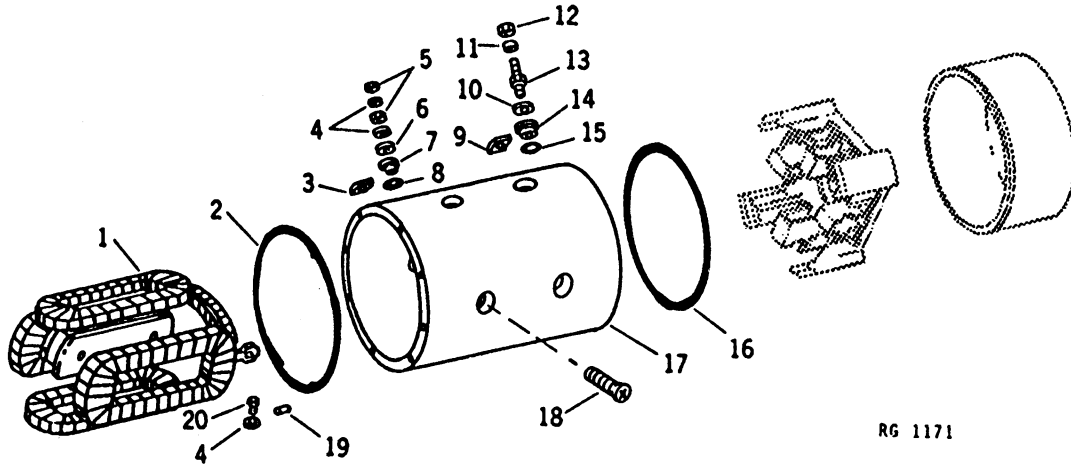
Reproduced by permission of Deere & Company,
© 1988 Deere & Company All rights reserved.

Item	Qty.	Description Variation No.	Part No.	Item	Qty.	Description Variation No.	Part No.
1	AR	Shim, .007" (.18 mm) 1	X	11	2	Washer, 7/32 x 1/2 x .048" 1	#
2	AR	Shim, .019" (.48 mm) 1	X	12	1	Gasket 1	X
3	1	Washer, thrust 1	X	13	1	Bushing 1	X
4	1	Frame 1	223679	14	4	Brush, carbon 1	223785
5	2	Bracket 1	X	15	4	Screw 1	#
6	2	Washer, 9/16" lock 1	#	16	4	Washer, #10 lock 1	#
7	2	Screw 1	#	17	4	Spring 1	X
8	1	Cover 1	X				
9	2	Screw 1	#				
10	6	Washer, #10 lock 1	#				

Common Hardware, Procure Locally
X Not Sold Separately

John Deere 6076TF and 6076AF

Group 11d Starter Main Frame



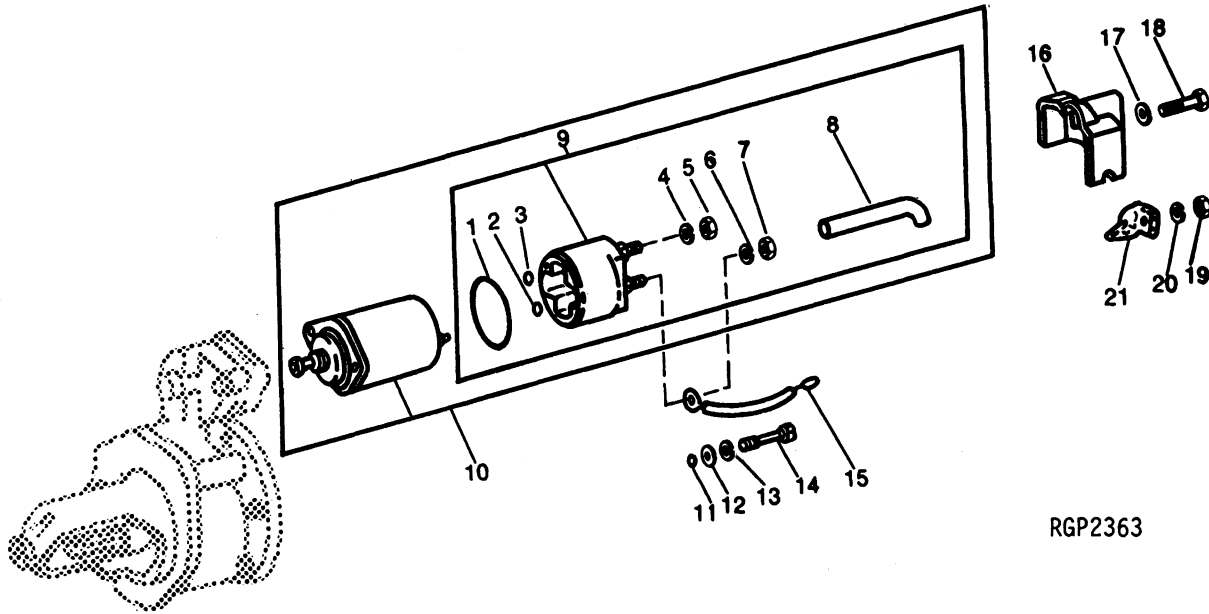
Reproduced by permission of Deere & Company,
© 1988 Deere & Company All rights reserved.

Item	Qty.	Description Variation No.	Part No.	Item	Qty.	Description Variation No.	Part No.
1	1	Coil, field winding 1	223926	11	1	Washer, lock 1	#
2	1	O-ring 1	223784	12	1	Nut 1	#
3	1	Washer 1	#	13	1	Bolt 1	#
4	3	Washer, #10 lock 1	#	14	1	Washer 1	#
5	2	Nut 1	#	15	1	O-ring 1	X
6	1	Washer, 7/32 x 1/2 x .048" 1	#	16	1	O-ring 1	X
7	1	Washer 1	#	17	1	Frame 1	X
8	1	O-ring 1	X	18	8	Screw 1	#
9	1	Bushing 1	X	19	1	Pin, dowel 1	X
10	1	Washer 1	#	20	1	Screw 1	#

Common Hardware, Procure Locally
X Not Sold Separately

John Deere 6076TF and 6076AF

Group 11e Starter Solenoid



RGP2363

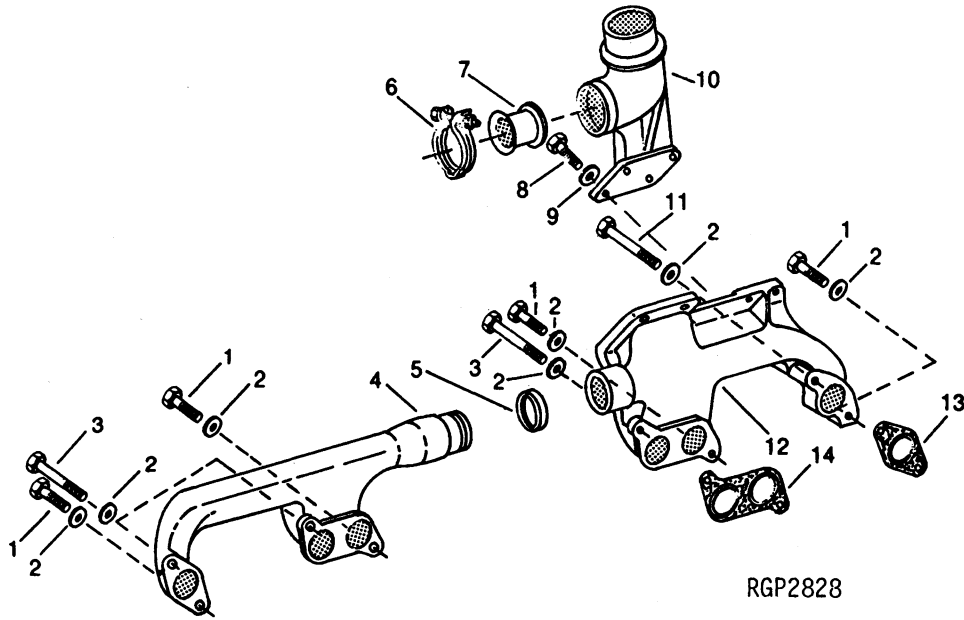
Reproduced by permission of Deere & Company,
© 1988 Deere & Company All rights reserved.

Item	Qty.	Description Variation No.	Part No.	Item	Qty.	Description Variation No.	Part No.
1	1	Gasket 1	X	12	2	Washer, 13/32 x 13/16 x .06" 1	#
2	1	Washer 1	#	13	2	Washer, 7/32 x 1/2 x .048" 1	#
3	1	Shim 1	X	14	2	Screw 1	#
4	1	Washer, 5/16" lock 1	#	15	1	Wire 1	X
5	1	Nut 1	#	16	1	Cover 1	X
6	1	Washer, #10 lock 1	#	17	1	Washer 1	#
7	1	Nut, 10-24 1	#	18	1	Screw 1	#
8	1	Hose 1	X	19	1	Nut, 3/8-16 1	#
9	1	Switch 1	223928	20	1	Washer, lock 1	#
10	1	Switch 1	223927	21	1	Connector 1	X
11	2	O-ring 1	X				

Common Hardware, Procure Locally
X Not Sold Separately

John Deere 6076TF and 6076AF

Group 12 Exhaust Manifold



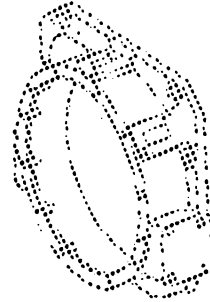
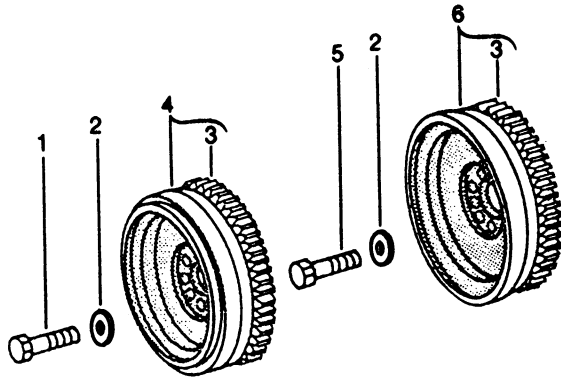
RGP2828

Reproduced by permission of Deere & Company,
© 1988 Deere & Company All rights reserved.

Item	Qty.	Description Variation No.	Part No.	Item	Qty.	Description Variation No.	Part No.
1	4	Screw, 3/8-16 x 1-3/4" 1	#	11	1	Screw, 3/8-16 x 3-3/8" 1	#
2	8	Washer, .413 x .689 x .118" 1 (10.5 x 17.5 x 3 mm)	#	12	1	Manifold, exhaust 1	223880
3	3	Screw, 3/8-16 x 3" 1	#	13	2	Gasket 1	223868
4	1	Manifold, exhaust 1	223761	14	2	Gasket 1	223867
5	1	Ring 1	223807				
6	1	Clamp, u-channel 1	224132				
7	1	Adapter 1	223891				
8	4	Screw 1	#				
9	4	Washer, 13/32 x 11/16 x .06" 1	#				
10	1	Elbow, pipe 1	223907				

John Deere 6076TF and 6076AF

Group 13a Flywheel



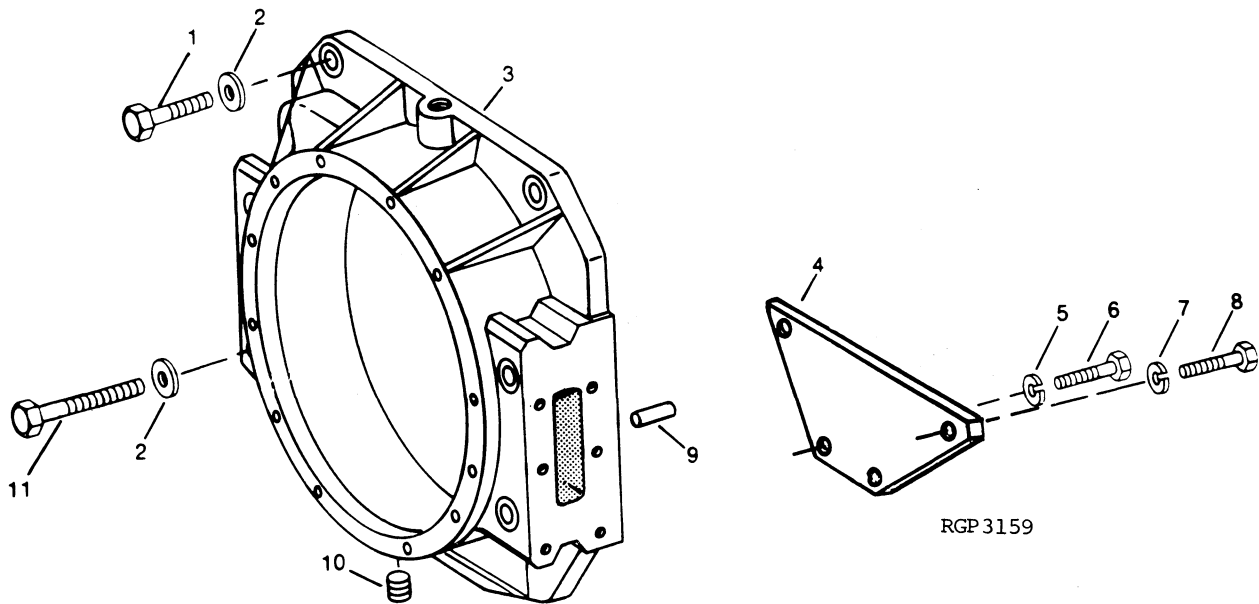
RGP2757

Reproduced by permission of Deere & Company,
© 1988 Deere & Company All rights reserved.

Item	Qty.	Description Variation No.	Part No.	Item	Qty.	Description Variation No.	Part No.
1	6	Screw 1	223864				
2	6	Washer 1,2	223983				
3	1	Gear 1,2	223750				
4	1	Flywheel 1	223686				
5	6	Bolt 2	223752				
6	1	Flywheel 2	223708				

John Deere 6076TF and 6076AF

Group 13b Flywheel Housing

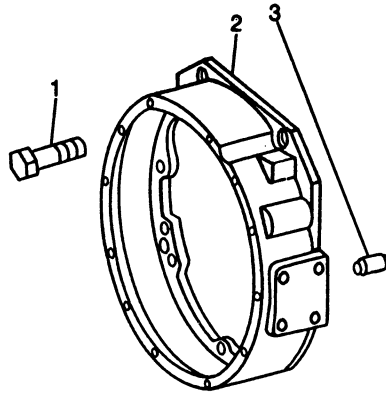


Reproduced by permission of Deere & Company,
© 1988 Deere & Company All rights reserved.

Item	Qty.	Description Variation No.	Part No.	Item	Qty.	Description Variation No.	Part No.
1	2	Screw, 3/4 x 2-1/2 " cap (upper) 1	#	11	4	Screw, 3/4-10 x 5-1/2" (lower) 1	#
2	6	Washer 1	#				
3	1	Housing 1	223902				
4	1	Cover 1	223803				
5	2	Washer, 3/8" 1	#				
6	2	Screw, 1/2 -13 x 7/8" 1	#				
7	2	Washer, 1/2" lock 1	#				
8	2	Screw, 3/8-16 x 1/2" 1	#				
9	2	Pin, dowel 1	223985				
10	1	Plug 1	223833				

John Deere 6076TF and 6076AF

Group 13b Flywheel Housing



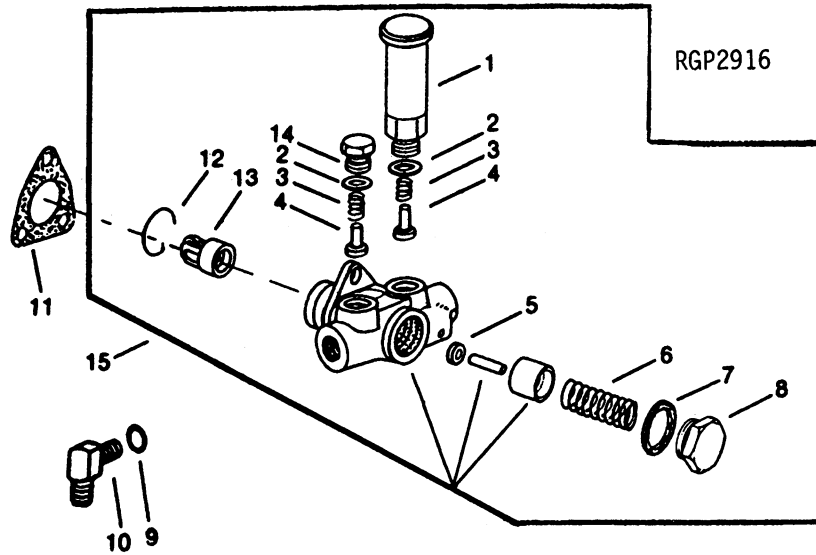
RGP2156

Reproduced by permission of Deere & Company,
© 1988 Deere & Company All rights reserved.

Item	Qty.	Description Variation No.	Part No.	Item	Qty.	Description Variation No.	Part No.
1	6	Screw, 3/4-10 x 2-1/4" 2	#				
2	1	Housing 2	223822				
3	2	Pin, dowel 2	223985				

John Deere 6076TF and 6076AF

Group 14 Fuel Pump

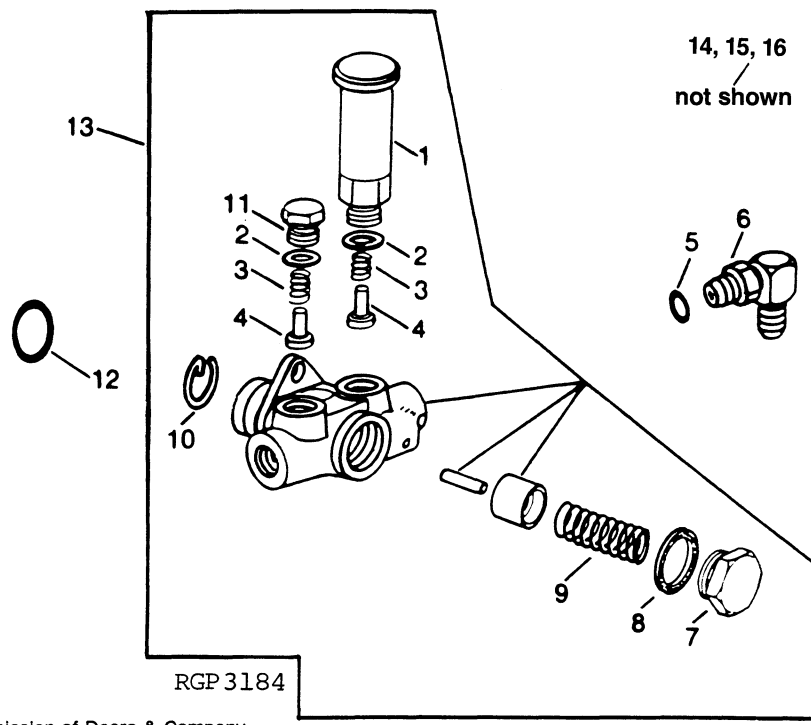


Reproduced by permission of Deere & Company,
© 1988 Deere & Company All rights reserved.

Item	Qty.	Description Variation No.	Part No.	Item	Qty.	Description Variation No.	Part No.
1	1	Primer, hand 1	223842	10	1	Fitting, outlet elbow 1	223922
2	2	Washer 1	223800	1	1	Fitting, inlet elbow 1	223972
3	2	Spring 1	223798	11	1	Gasket 1	223839
4	2	Valve 1	223797	12	1	Ring, snap 1	223796
5	1	O-ring 1	223794	13	1	Tappet 1	223694
6	1	Spring 1	223793	14	1	Plug 1	223799
7	1	Washer 1	223828	15	1	Pump, fuel (transfer) 1	223973
8	1	Plug, drain 1	223795				
9	2	O-ring 1	223759				

John Deere 6076TF and 6076AF

Group 14 Fuel Pump



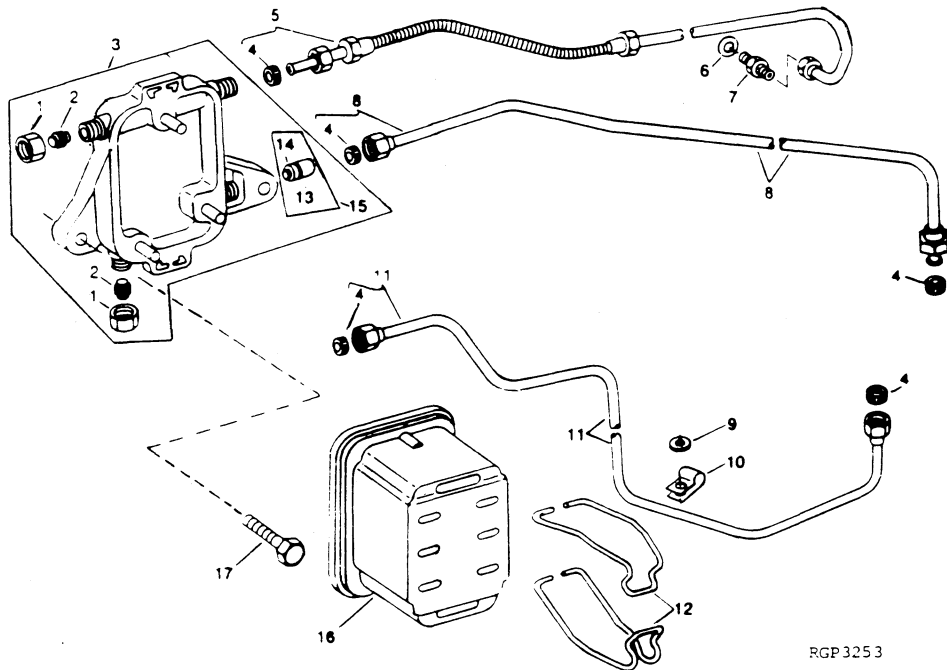
Reproduced by permission of Deere & Company,
© 1988 Deere & Company All rights reserved.

Item	Qty.	Description Variation No.	Part No.	Item	Qty.	Description Variation No.	Part No.
1	1	Primer, hand 2	223709	10	1	Ring, snap 2	223829
2	2	Washer 2	223824	11	1	Plug, drain 2	223823
3	2	Spring 2	223825	12	1	O-ring 2	223830
4	2	Valve 2	223826	13	1	Pump, fuel (transfer) 2	223976
5	2	O-ring 2	223742	14	1	Pin 2	223916
6	1	Fitting, outlet elbow 2	223921	15	1	Block, sway 2	223917
	1	Fitting, inlet elbow 2	223972	16	1	Tappet 2	223919
7	1	Plug, drain 2	223827				
8	1	Washer 2	223828				
9	1	Spring 2	223918				

Common Hardware, Procure Locally
X Not Sold Separately

John Deere 6076TF and 6076AF

Group 15 Fuel Filter



RGP 325 3

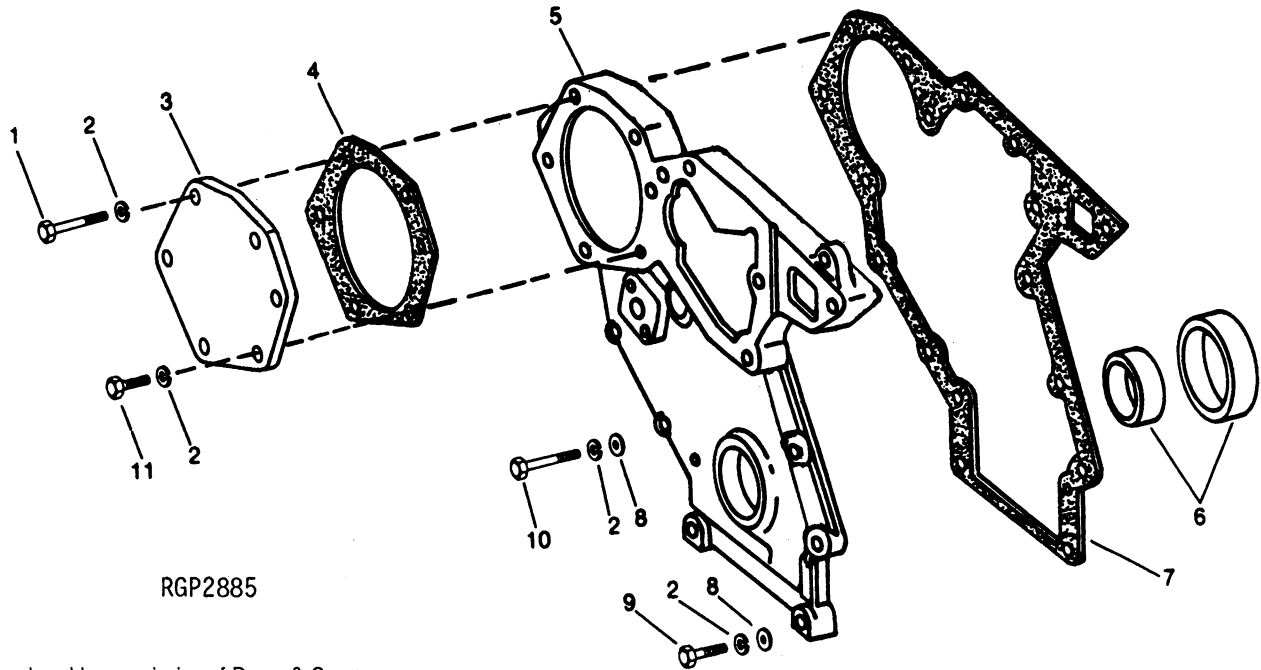
Reproduced by permission of Deere & Company,
© 1988 Deere & Company All rights reserved.

Item	Qty.	Description Variation No.	Part No.	Item	Qty.	Description Variation No.	Part No.
1	2	Fitting 1,2	223770	11			not used
2	2	Washer 1,2	223913	12	2	Bracket 1,2	223899
	2	Packing (seal) 1,2	223835	13	1	Clamp 1,2	223911
3	1	Base 1,2	223957	14	1	Clamp 1,2	223910
4	3	Packing (seal) 1,2	223835	15	1	Valve, check 1,2	223971
5	1	Line, fuel 1, 2	223958	16	1	Filter, fuel 1,2	223953
6			not used	17	2	Screw, 7/16-14 x 1-1/4" 1,2 self-locking	#
7			not used				
8	1	Line, fuel 1,2	223979				
9			not used				
10			not used				

Common Hardware, Procure Locally
X Not Sold Separately

John Deere 6076TF and 6076AF

Group 18 Timing Gear Cover



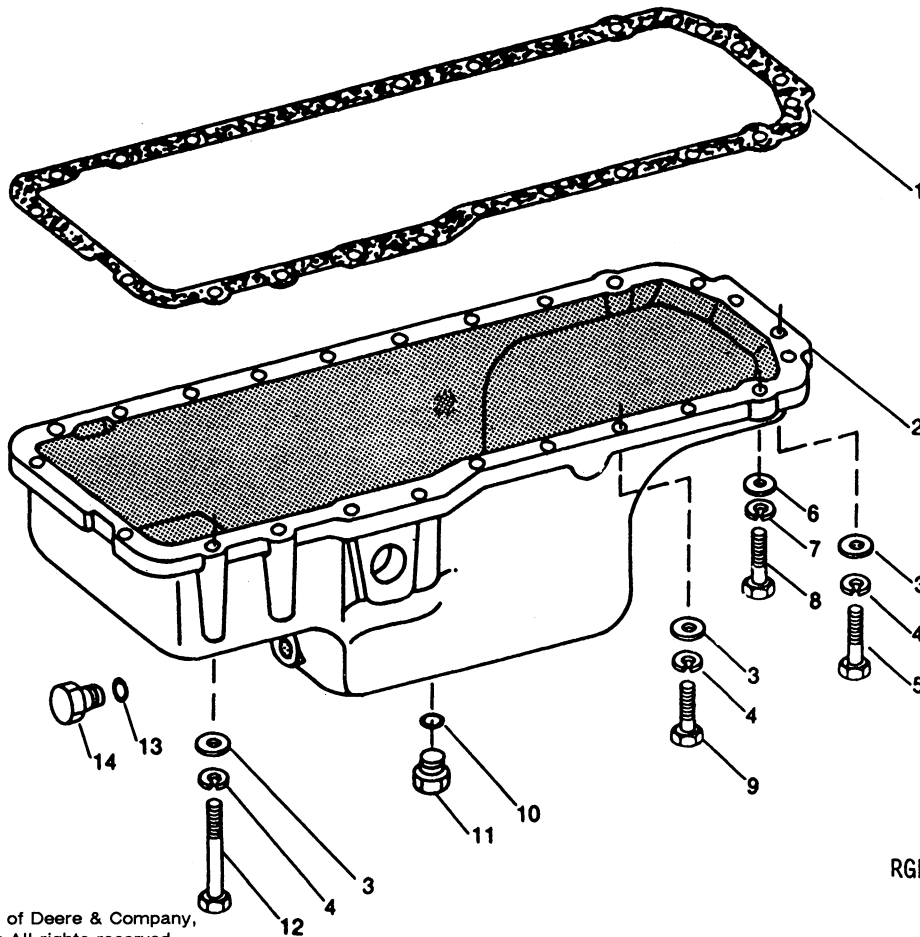
Reproduced by permission of Deere & Company,
© 1988 Deere & Company All rights reserved.

Item	Qty.	Description Variation No.	Part No.	Item	Qty.	Description Variation No.	Part No.
1	5	Screw, 5/16-18 x 3-1/2" 1	#	11	1	Screw, 5/16-18 x 1" 1	#
2	12	Washer, 5/16" 1	#				
3	1	Cover 1	223775				
4	1	Gasket 1	223774				
5	1	Cover 1	223890				
6	1	Seal 1	223677				
7	1	Gasket 1	223847				
8	6	Washer, 11/32 x 11/16 x .06" 1	#				
9	2	Screw, 5/16-18 x 1-1/2" grade 8 1	#				
10	4	Screw, 5/16-18 x 1-5/8" 1	#				

Common Hardware, Procure Locally
X Not Sold Separately

John Deere 6076TF and 6076AF

Group 21a Oil Pan



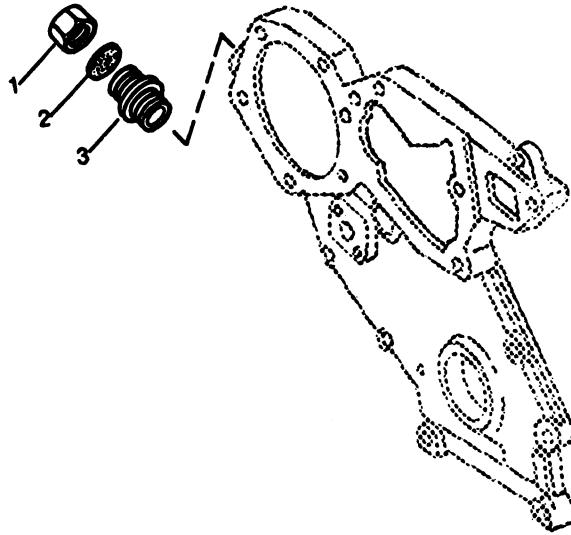
RGP2176

Reproduced by permission of Deere & Company,
© 1988 Deere & Company All rights reserved.

Item	Qty.	Description Variation No.	Part No.	Item	Qty.	Description Variation No.	Part No.
1	1	Gasket 1	223767	8	2	Screw, 1/2-13 x 1-3/4" 1	#
2	1	Pan, oil 1	223931	9	18	Screw, 3/8-16 x 1-5/8" 1	#
3	22	Washer, 13/32 x 13/16 x .06" 1	#	10	1	Washer, 1 x 1-1/4 x .064" 1 (25.4 x 31.8 x 1.6 mm)	#
4	22	Washer, 3/8" lock 1	#	11	1	Plug, drain 1	223744
5	2	Screw, 3/8-6 x 2" 1	#	12	2	Bolt, 3/8-16 x 5-3/8" 1	#
6	2	Washer, 33/64 x 7/8 x .048" 1	#	13	1	O-ring 1	223732
7	2	Washer, 1/2" lock 1	#	14	1	Plug, drain 1	223748

John Deere 6076TF and 6076AF

Group 21b Oil Fill Cap

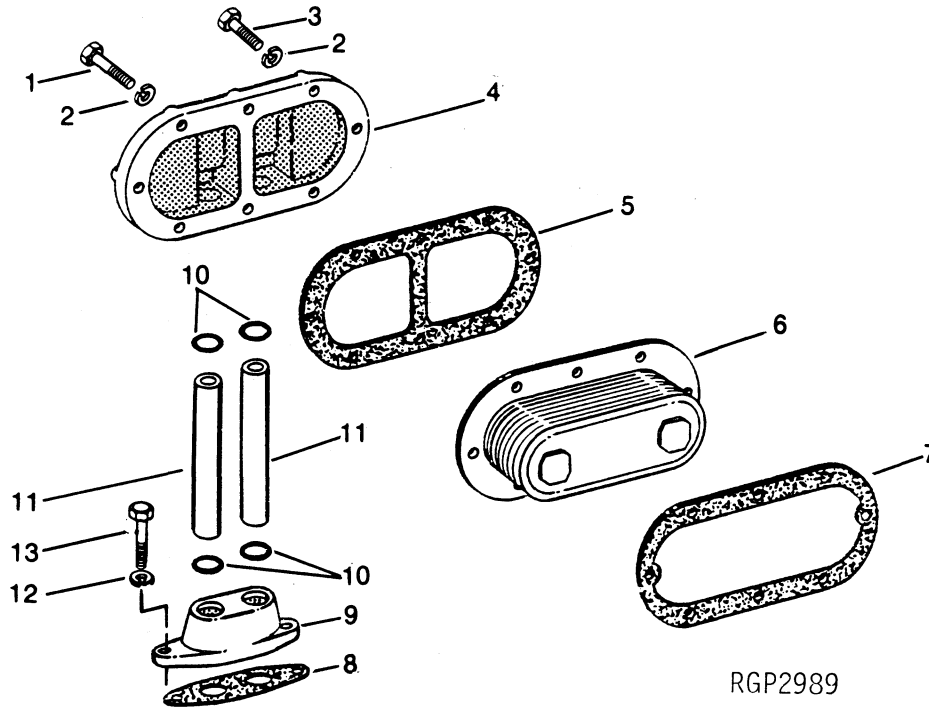


Reproduced by permission of Deere & Company,
© 1988 Deere & Company All rights reserved.

Item	Qty.	Description Variation No.	Part No.	Item	Qty.	Description Variation No.	Part No.
1	1	Cap, oil fill 1	223615				
2	1	Gasket 1	223636				
3	1	Nipple, threaded 1	223772				

John Deere 6076TF and 6076AF

Group 21c Oil Cooler

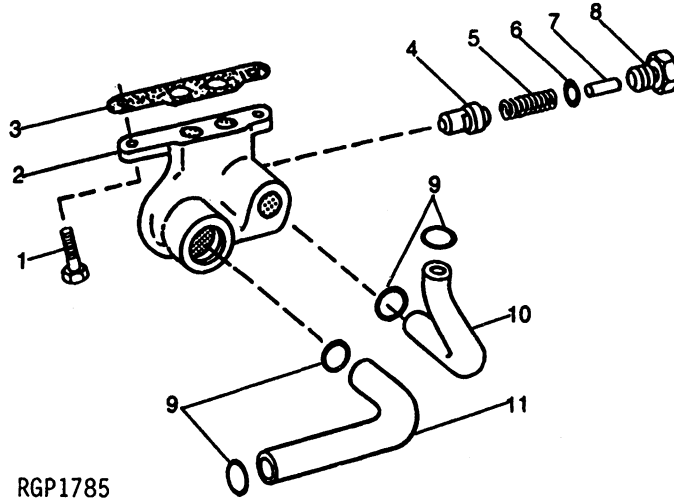


Reproduced by permission of Deere & Company,
© 1988 Deere & Company All rights reserved.

Item	Qty.	Description Variation No.	Part No.	Item	Qty.	Description Variation No.	Part No.
1	1	Screw, 5/16-18 x 2-1/4" 1	#	11	2	Tube 1	223786
2	8	Washer, 5/16" lock 1	#	12	2	Washer, 3/8" lock 1	#
3	7	Screw, 5/16-18 x 1-1/2" 1	#	13	2	Screw, 3/8-16 x 1-1/4" 1	#
4	1	Cover 1	223787				
5	1	Gasket 1	223781				
6	1	Cooler, oil 1	223680				
7	1	Gasket 1	223682				
8	1	Gasket 1	223783				
9	1	Adapter 1	223782				
10	4	O-ring 1	223763				

John Deere 6076TF and 6076AF

Group 21d Oil Cooler Bypass Valve



RGP1785

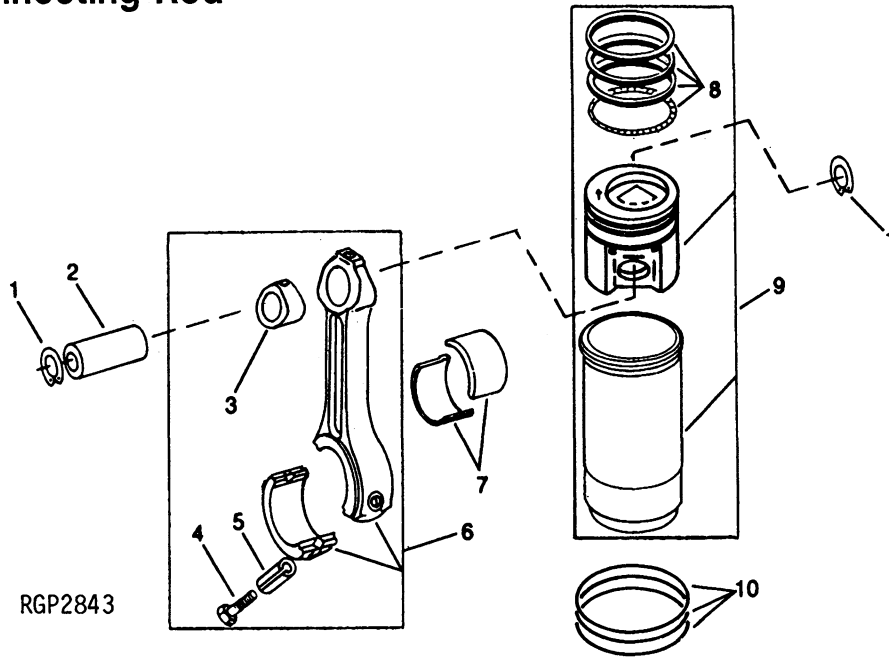
Reproduced by permission of Deere & Company,
© 1988 Deere & Company All rights reserved.

Item	Qty.	Description Variation No.	Part No.	Item	Qty.	Description Variation No.	Part No.
1	2	Screw, cap 1	#	11	1	Tube, oil 1	223818
2	1	Housing 1	223861				
3	1	Gasket 1	223831				
4	1	Valve 1	223768				
5	1	Spring 1	223741				
6	1	O-ring 1	223989				
7	1	Pin, spring 1	223664				
8	1	Plug, drain 1	223769				
9	4	O-ring 1	223850				
10	1	Tube, oil 1	223773				

Common Hardware, Procure Locally
X Not Sold Separately

John Deere 6076TF and 6076AF

Group 22 Piston and Connecting Rod



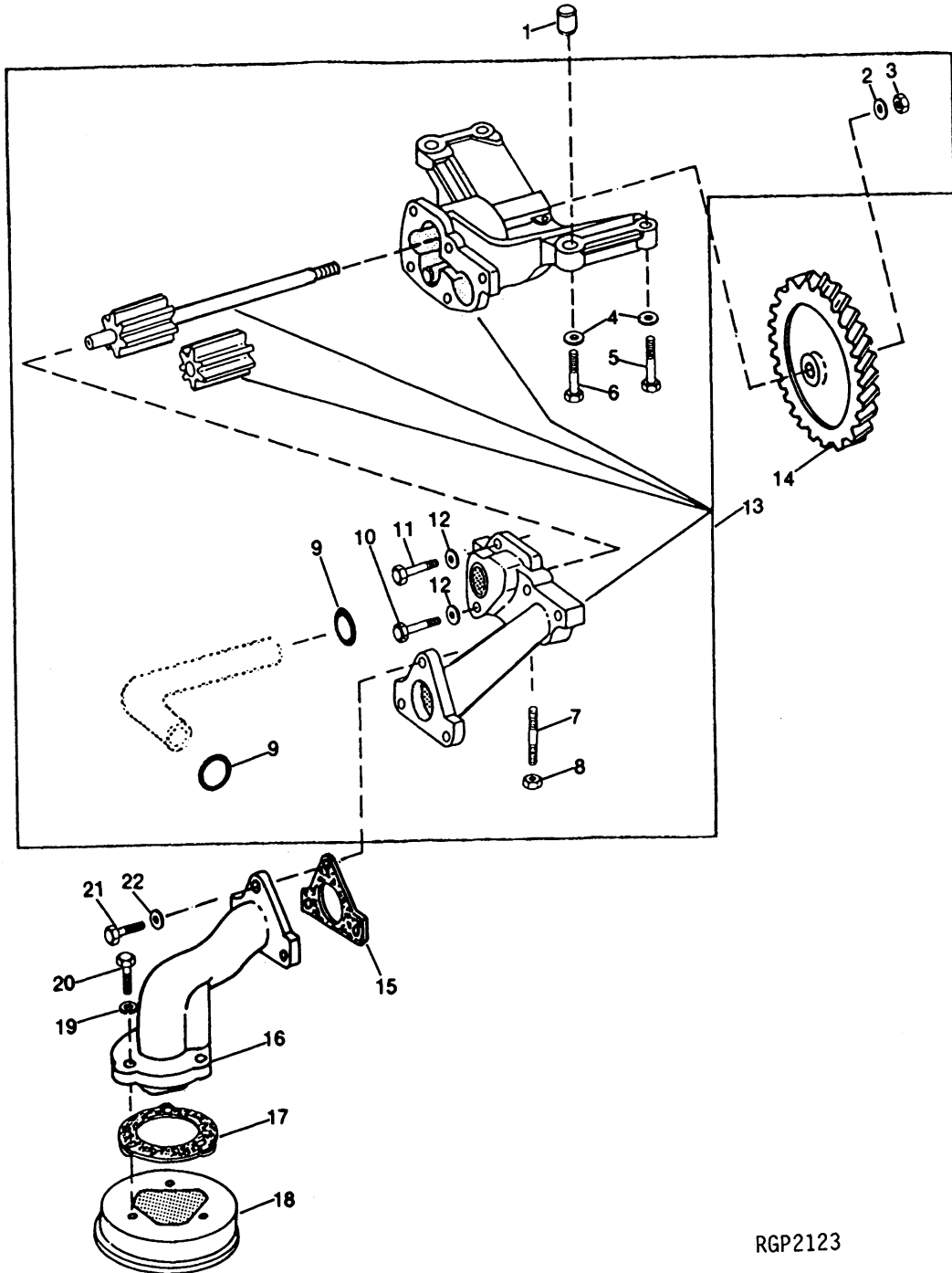
Reproduced by permission of Deere & Company,
© 1988 Deere & Company All rights reserved.

Item	Qty.	Description Variation No.	Part No.	Item	Qty.	Description Variation No.	Part No.
1	12	Ring, snap 1	223730	8	6	Ring kit, piston 1	223952
2	6	Pin, piston 1	223806	9	6	Liner kit, piston 1	223942
3	6	Bushing 1	223853	10	6	Packing kit (seal) 1	223716
4	12	Screw, cap 1	223834				
5	12	Sleeve 1	223792				
6	6	Rod, connecting 1	223715				
7	AR	Bearing, split std. 1	223689				
	AR	Bearing, split .002" U/S 1	223690				
	AR	Bearing, split .010" U/S 1	223691				
	AR	Bearing, split .020" U/S 1	223692				
	AR	Bearing, split .030" U/S 1	223693				

NOTES

John Deere 6076TF and 6076AF

Group 25a Oil Pump



RGP2123

Reproduced by permission of Deere & Company,
© 1988 Deere & Company All rights reserved.

John Deere 6076TF and 6076AF

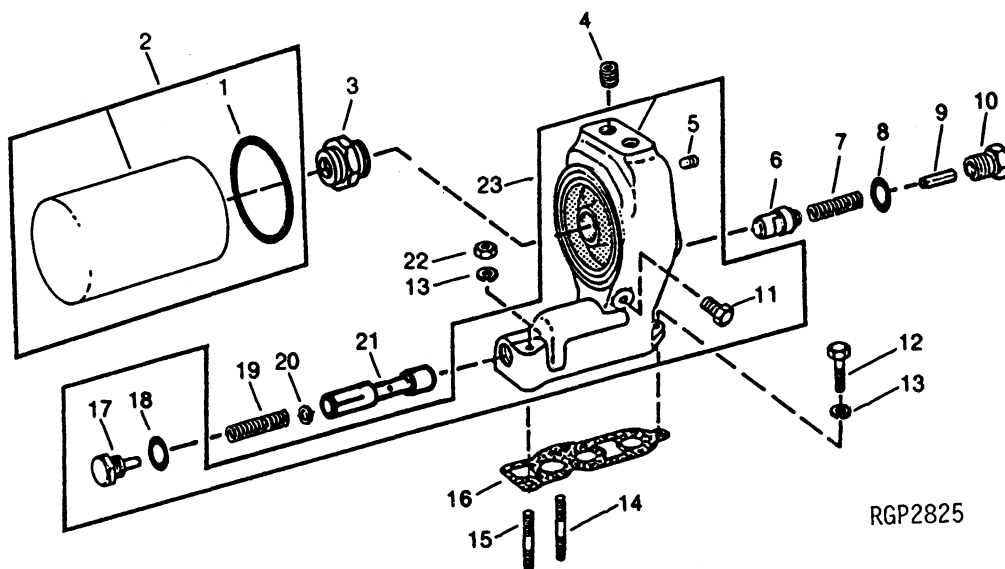
Group 25a Oil Pump

Item	Qty.	Description Variation No.	Part No.	Item	Qty.	Description Variation No.	Part No.
1	2	Bushing 1	223816	21	3	Screw, 3/8-16 x 1-1/4" 1	#
2	1	Washer 1	223982	22	3	Washer 1	#
3	1	Nut 1	#				
4	4	Washer 1	#				
5	2	Screw, 3/8-16 x 1-3/8" 1	#				
6	2	Screw, 3/8-16 x 1-7/8" 1	#				
7	1	Screw, 5/16-18 x 1-1/4" 1	#				
8	1	Nut, 5/16-18 1	#				
9	2	O-ring 1	223850				
10	2	Screw, 3/8-16 x 2-3/8" 1	#				
11	3	Screw, 3/8-16 x 1-3/4" 1	#				
12	5	Washer 1	223756				
13	1	Pump, oil 1	#				
14	1	Gear 1	223817				
15	1	Gasket 1	223846				
16	1	Fitting, elbow 1	223865				
17	1	Gasket 1	223789				
18	1	Manifold, intake (oil pump) 1	223681				
19	3	Washer, 5/16" lock 1	#				
20	3	Screw, 5/16-18 x 1" 1	#				

Common Hardware, Procure Locally
X Not Sold Separately

John Deere 6076TF and 6076AF

Group 25b Oil Filter



Reproduced by permission of Deere & Company,
© 1988 Deere & Company All rights reserved.

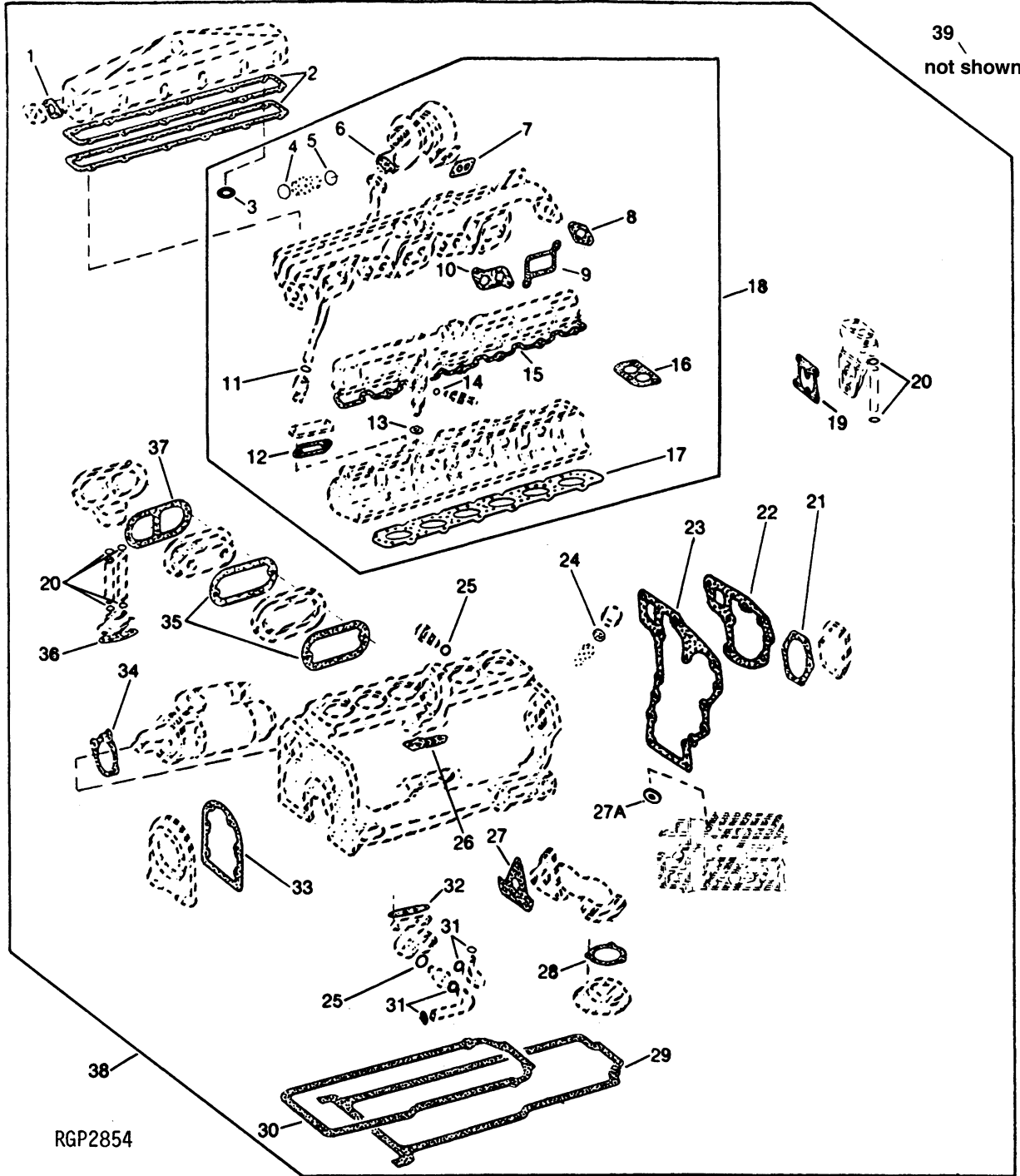
Item	Qty.	Description Variation No.	Part No.	Item	Qty.	Description Variation No.	Part No.
1	1	Packing (seal) 1	223759	13	3	Washer, 3/8" lock 1	#
2	1	Filter, oil 1	223673	14	1	Stud 1	#
3	1	Adapter 1	223852	15	1	Stud 1	#
4	2	Plug, 3/4NPT pipe 1	#	16	1	Gasket 1	223760
5	1	Plug, 1/8NPT 1	#	17	1	Plug, drain 1	223675
6	1	Valve 1	223768	18	1	O-ring 1	223989
7	1	Spring 1	223741	19	1	Spring 1	223758
8	1	O-ring 1	223989	20	AR	Washer 1	223990
9	1	Pin, spring 1	223664	21	1	Valve 1	223871
10	1	Plug, drain 1	223769	22	2	Nut, 3/8-16 grade 8 1	#
11	1	Plug, pipe 1	223802	23	1	Housing 1	223938
12	1	Screw, 3/8-16 x 1-3/8" 1	#				

Common Hardware, Procure Locally
X Not Sold Separately

NOTES

John Deere 6076TF and 6076AF

Group 39 Gasket Kits



Reproduced by permission of Deere & Company,
© 1988 Deere & Company All rights reserved.

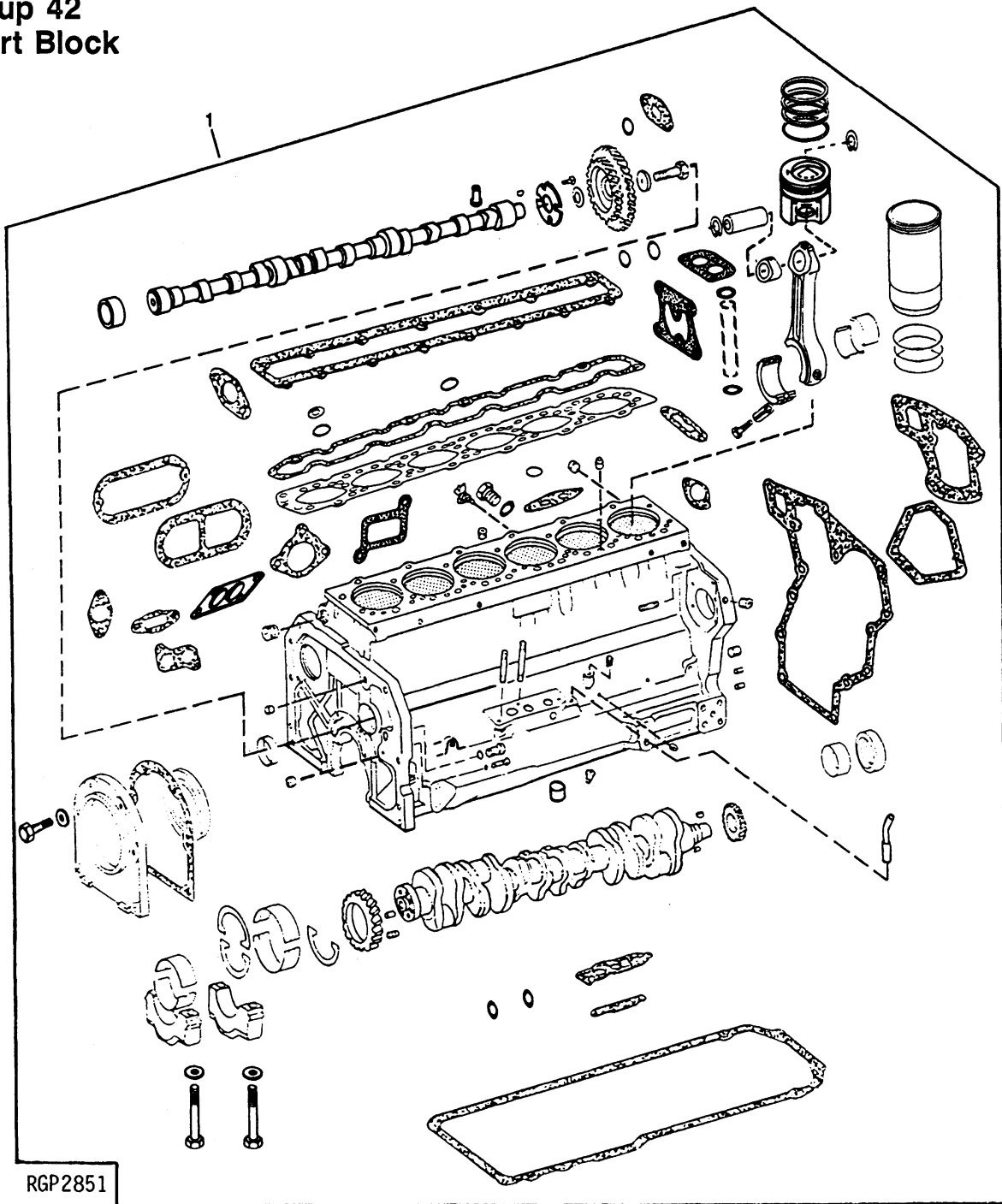
John Deere 6076TF and 6076AF

Group 39 Gasket Kits

Item	Qty.	Description Variation No.	Part No.	Item	Qty.	Description Variation No.	Part No.
1	1	Gasket 1	not used	21	1	Gasket 1	223774
2	2	Gasket 1	not used	22	1	Gasket 1	not used
3	2	O-ring 1	not used	23	1	Gasket 1	not used
4	1	O-ring 1	223780	24	1	Gasket 1	223636
5	1	O-ring 1	223885	25	1	O-ring 1	223988
6	1	Gasket 1	223757	26	1	Gasket 1	223760
7	1	Gasket 1	223898	27	1	Gasket 1	223846
8	2	Gasket 1	223868	27A			not used
9	3	Gasket 1	223888	28	1	Gasket 1	223789
10	2	Gasket 1	223867	29	1	Gasket (cast iron oil pan) 1	X
11	1	O-ring 1	223851	30	1	Gasket (aluminum oil pan) 1	223767
12	2	Gasket 1	223892	31	4	O-ring 1	223850
13	6	Washer, 19/64 x 23/32 x .08" 1 (7.4 x 18.2 x 2 mm)	X	32	1	Gasket 1	223831
14	6	O-ring 1	223858	33	1	Gasket 1	223738
15	1	Gasket 1	223771	34	1	Gasket 1	223791
16	1	Gasket 1	223762	35	2	Gasket 1	223682
17	1	Gasket 1	223801	36	1	Gasket 1	223783
18	1	Gasket kit, cylinder head 1	223962	37	1	Gasket 1	223781
19	1	Gasket 1	223882	38	1	Gasket kit 1	223966
20	6	O-ring 1	223763	39	6	Ring (injection nozzle) 1	223841

John Deere 6076TF and 6076AF

Group 42 Short Block

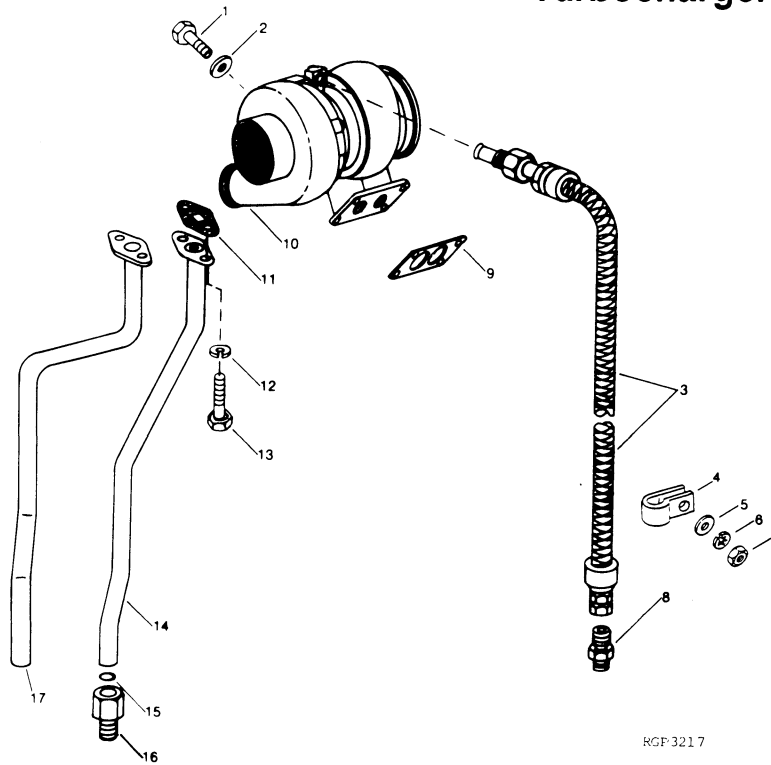


Reproduced by permission of Deere & Company,
© 1988 Deere & Company All rights reserved.

Item	Qty.	Description Variation No.	Part No.	Item	Qty.	Description Variation No.	Part No.
1	1	Block, short 1	223914	1	1	Block, short 2	223840

John Deere 6076TF and 6076AF

Group 50a Turbocharger and Oil Lines



RGP 321 7

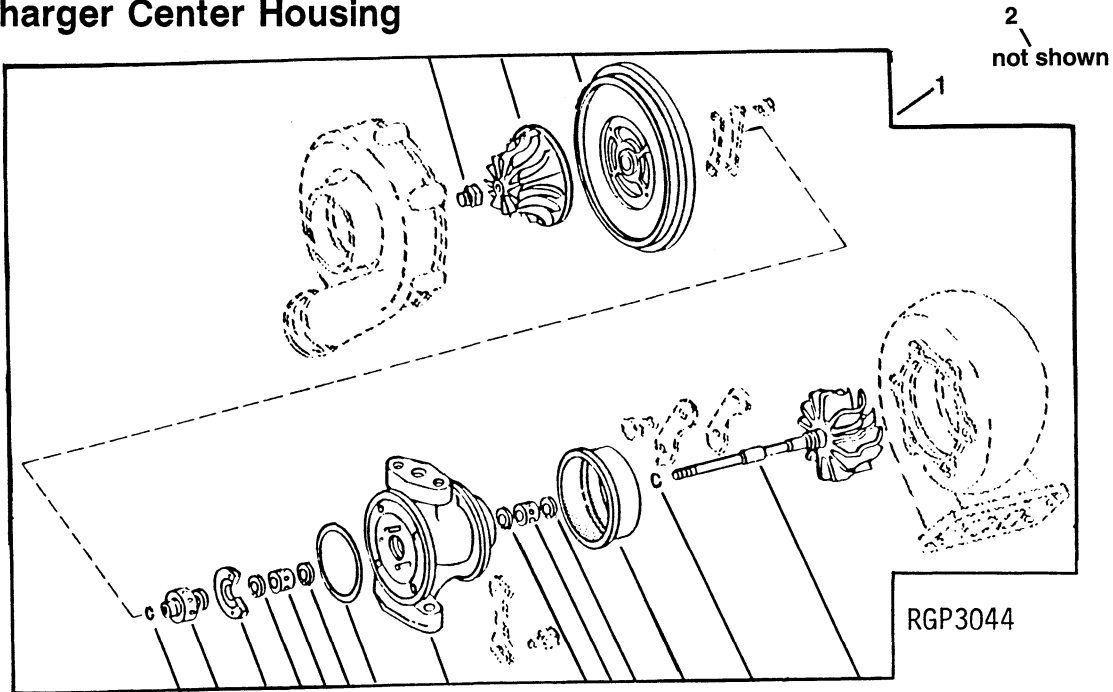
Reproduced by permission of Deere & Company,
© 1988 Deere & Company All rights reserved.

Item	Qty.	Description Variation No.	Part No.	Item	Qty.	Description Variation No.	Part No.
1	4	Screw, 3/8-16 x 1" 1,2	#	9	1	Gasket 1	223898
2	4	Washer, 13/32 x 13/16 x .06" 1,2	#	10	1	Turbocharger 1	223968
3	1	Line, oil 1,2	223932		1	Turbocharger 2	223969
4	1	Clip 1	223666	11	1	Gasket 1,2	223757
5	1	Washer, 9/32 x 5/8 x .048" 1	#	12	3	Washer, 3/8" lock 1,2	#
6	1	Washer, 1/4" lock 1	#	13	2	Screw, 3/8-16 x 7/8" 1,2	#
7	1	Nut, 1/4-20 1	#	14	1	Line, oil 1,2	223949
8	1	Fitting 1	223815	15	1	O-ring 1,2	223851
				16	1	Adapter 1,2	223753

Common Hardware, Procure Locally
X Not Sold Separately

John Deere 6076TF and 6076AF

Group 50b Turbocharger Center Housing

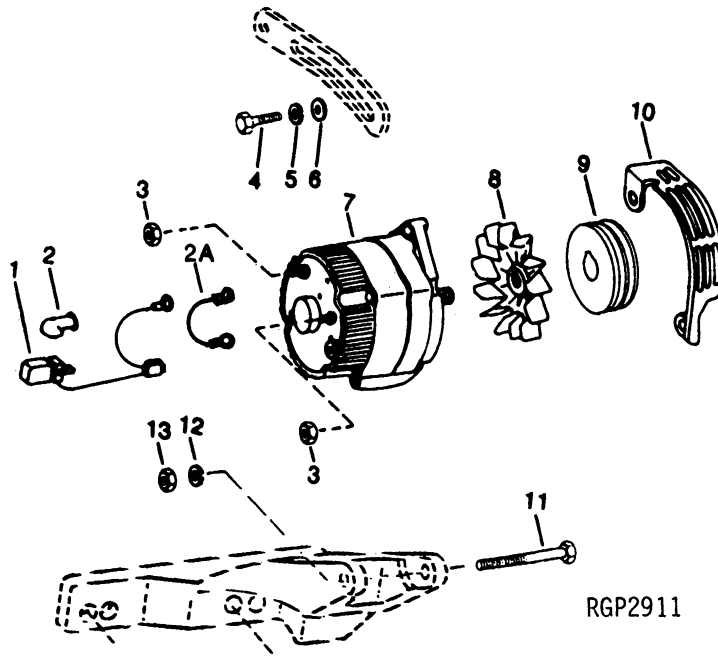


Reproduced by permission of Deere & Company,
© 1988 Deere & Company All rights reserved.

Item	Qty.	Description Variation No.	Part No.	Item	Qty.	Description Variation No.	Part No.
1	1	Housing, turbocharger center 1	X				
2	1	Kit, screw and washer 1	X				

John Deere 6076TF and 6076AF

Group 51a Alternator



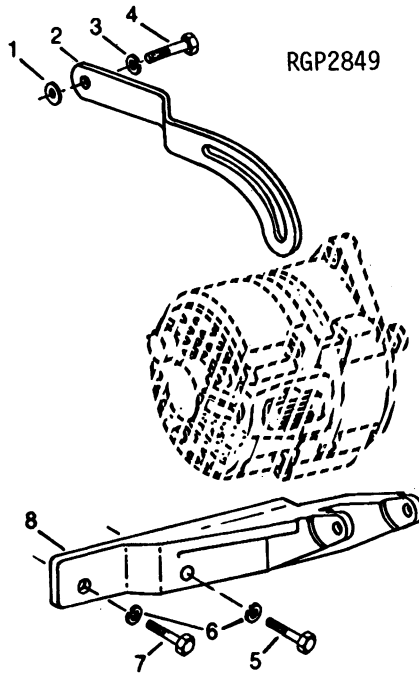
Reproduced by permission of Deere & Company,
© 1988 Deere & Company All rights reserved.

Item	Qty.	Description Variation No.	Part No.	Item	Qty.	Description Variation No.	Part No.
1	1	Harness, wiring 1	223718	10	1	Shield 1	223485
2	1	Cover 1	X	11	1	Screw, M10 x 90 1	#
2A	1	Lead, ground 1	#	12	1	Washer, M10 lock 1	#
3	2	Nut, M5 1	#	13	1	Nut, M10 1	#
4	1	Screw, M8 x 35 1	#				
5	1	Washer, M8 lock 1	#				
6	1	Washer 1	#				
7	1	Alternator 1	223717				
8	1	Fan 1	X				
9	1	Pulley 1	223986				

Common Hardware, Procure Locally
X Not Sold Separately

John Deere 6076TF and 6076AF

Group 51b Alternator Brackets



Reproduced by permission of Deere & Company,
© 1988 Deere & Company All rights reserved.

Item	Qty.	Description Variation No.	Part No.	Item	Qty.	Description Variation No.	Part No.
1	1	Washer 1	X				
2	1	Strap 1	223886				
3	1	Washer, M8 lock 1	#				
4	1	Screw, M8 x 25 cap 1	#				
5	1	Screw, 7/16-14 x 1- 1/2" cap 1	#				
6	2	Washer, 7/16" lock 1	#				
7	1	Screw, 7/16-14 x 1-3/8" 1	#				
8	1	Bracket 1	223897				

TP-5369 8/89

PRINTED IN U.S.A.

KOHLER[®] POWER SYSTEMS

KOHLER CO. Kohler, Wisconsin 53044

Phone 414-565-3381

Fax 414-459-1646 (U.S.A. Sales), Fax 414-459-1614 (International)

For the nearest sales and service outlet in U.S.A. and Canada

Phone 1-800-544-2444