

# Service Parts

Engine

Engine Model:

**General Motors 5.7 L Powertrain**

Generator Models:

50/60 kW

# Table of Contents

<b>Description</b>	<b>Page</b>
Introduction .....	1
Number System Significance .....	1
Illustrations .....	1
How to Find Part Numbers .....	1
Group 1: Engine Block/Lower End .....	2
Group 2: Engine Head/Upper End .....	4
Group 3: Engine Trim Parts .....	6
Group 4: Flywheel .....	8
Group 5: Starter .....	8
Group 6: Alternator, Pulley, and Belt .....	9
Group 7: Intake and Exhaust System .....	10
Group 8: Engine Mounting .....	10
Group 9: Fuel System .....	11

# Introduction

This manual lists service replacement parts for 50/60 kW generator sets.

At the time of print this manual applied to the generator set specification (spec) numbers listed in the Specification Number Index. On occasion this manual may apply to specs not listed in the Specification Number Index.

Information in this publication represents data available at the time of print. Kohler Co. reserves the right to change this publication and the products represented without notice and without any obligation or liability whatsoever.

This manual includes the following main sections:

**Table of Contents.** Lists the sections of the manual.

**Introduction (and other information sections).** Contains introductory material about part numbers, illustrations, and hardware.

**Group Parts Lists.** List the part numbers of parts in the groups.

## Number System Significance

This manual uses the following numbering systems:

**Group Number.** A unique number representing a parts group needed to assemble a generator set function. For example, Group 10 is the Fuel System group.

**Part Number.** The part number identifies an individual assembly, subassembly, component, or accessory kit.

## Illustrations

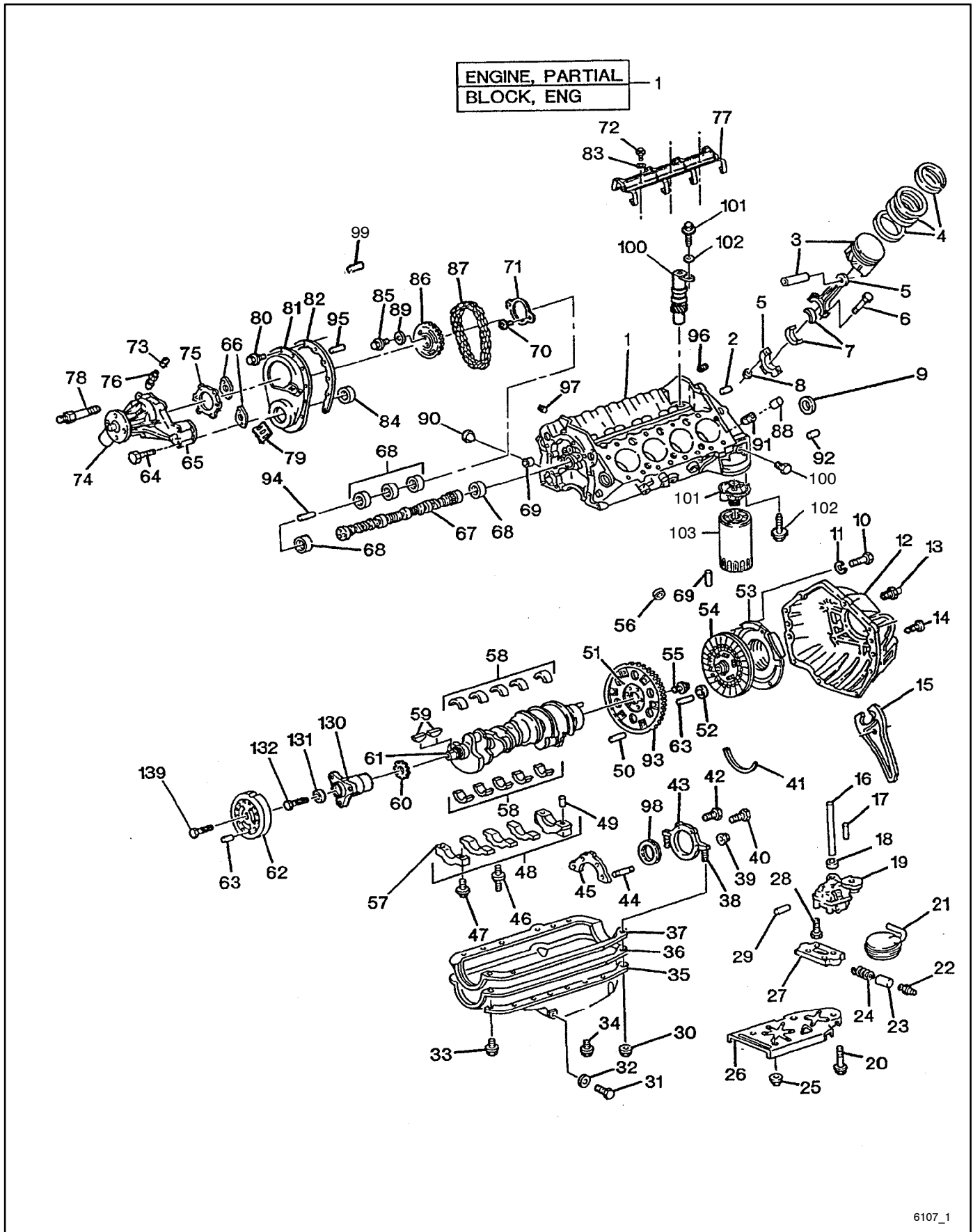
Illustrations (or exploded-view drawings) best representing the widest range of variations accompany most groups in this manual. Illustrations do not depict all details and may not show all parts. Do not use illustrations for assembly or disassembly instructions.

## How to Find Part Numbers

Use the following steps to locate a service replacement part.

1. **Identify the group** most likely to include the service part number.
2. **Page forward to locate the group** identified in step 1 or find the appropriate page in the Table of Contents.
3. **Find the part on the illustration** and note the item number of the part or **find the part description in the parts list.**

# Group 1: Engine Block/Lower End



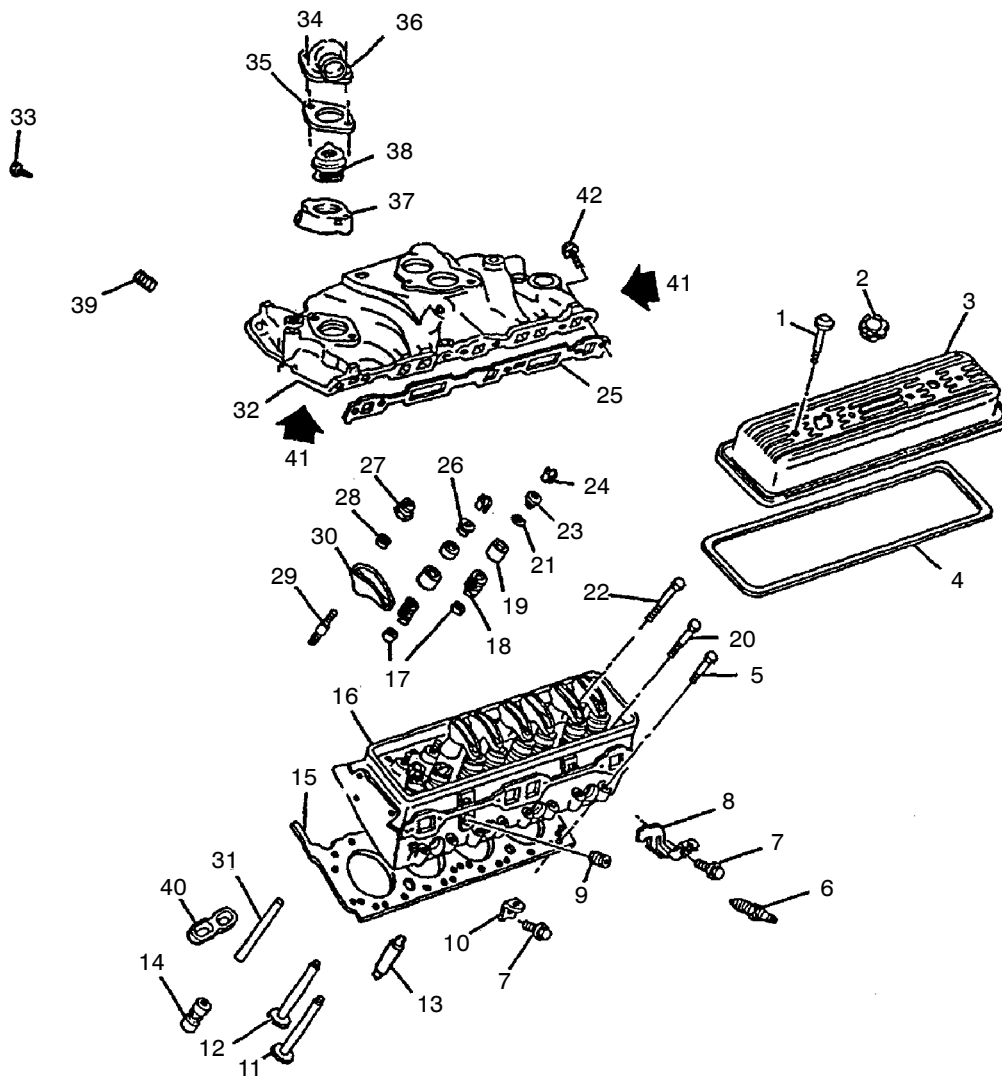
6107\_1

# Group 1: Engine Block/Lower End

Item	Part Number	Description	Qty.	Item	Part Number	Description	Qty.
			Var.				Var.
1	GM16491	Engine, service partial	1	55	-	See Group 4	
2	GM16429	Plug, hex 1/4-18 x .69	AR	56	GM16585	Plug, engine block core hole (brass)	8
3	GM16442	Piston kit, engine std.	8	56	GM16548	Plug, engine block core hole (steel)	1
3	GM16445	Piston kit, engine (0.50 mm OS)	8	57	-	Not applicable	
4	GM16441	Ring kit, piston std.	8	58	GM16816	Bearing kit, crankshaft #1, 2, 3,4 (std.)	4
4	GM16452	Ring kit, piston (.127 mm OS)	8	58	GM16817	Bearing kit, crankshaft #5 (std)	1
4	GM16444	Ring kit, piston (0.50 mm OS)	8	58	GM16451	Bearing kit, crankshaft #1, 2, 3,4 (.001 OS)	4
5	GM16363	Rod, connecting	8	58	GM16447	Bearing kit, crankshaft #5 (.001 mm OS)	1
6	GM16546	Bolt, connecting rod	16	59	GM16539	Key, crankshaft balancer	2
7	-	Bearing kit, connect. rod std.	8	60	GM16509	Sprocket, crankshaft (18 teeth)	1
7	GM16443	Bearing kit, connect. rod (.001 OS)	8	61	GM16403	Crankshaft	1
8	GM16586	Nut, connecting rod	16	62	GM16490	Balancer, crankshaft	1
9	GM16397	Plug, camshaft rear bearing hole	1	63	GM16428	Pin, locator 5/8 x 1 3/16	2
10	-	Not applicable		64	GM16462	Bolt, water pump	4
11	-	Not applicable		65	GM16818	Pump kit, water	1
12	-	Not applicable		66	GM16582	Gasket, water pump cover	1
13	-	Not applicable		67	GM16398	Camshaft	1
14	-	Not applicable		68	GM16431	Bearing, camshaft (pos. #1)	1
15	-	Not applicable		68	GM16432	Bearing, camshaft (pos. #2-5)	2
16	GM16589	Shaft, oil pump drive	1	68	GM16433	Bearing, camshaft (pos. #3-4)	2
17	GM16476	Pin, locator 1/4 x 5/8	AR	69	GM16577	Plug, engine block oil galley (1/2" steel expansion)	1
18	GM16583	Retainer, oil pump drive shaft	1	69	GM16581	Plug, engine block oil galley	1
19	GM16482	Pump, oil, .742 dia. tube	1	69	GM16365	Plug, engine block oil galley (37/64 x 1/4)	2
20	GM16347	Bolt, oil pump 7/16-14 x 2 3/8	1	69	GM16512	Plug, engine block oil galley (cup 15/32 x 5/16)	1
21	GM16455	Screen, oil pump	1	69	GM16429	Plug, hex 1/4-18 x .69	1
22	GM16580	Plug, oil pressure relief valve bore	1	70	GM16513	Bolt, balancer shaft retainer	2
23	GM16579	Valve, oil pressure relief	1	71	GM16372	Retainer, camshaft	1
24	GM16343	Spring, oil pressure relief valve	1	72	GM16528	Bolt, valve lifter guide retainer	3
25	GM16603	Nut, crankshaft oil deflector	5	73	GM16533	Plug, water pump	1
26	GM16492	Deflector, crankshaft oil	1	74	GM16819	Hub, water pump	1
27	GM16376	Cover, oil pump	1	75	GM16483	Gasket, water pump cover	1
28	GM16422	Bolt, oil pump cover	4	76	-	Not applicable	
29	GM16549	Pin, oil pressure relief valve spring	1	77	GM16519	Retainer, valve lifter guide	1
30	GM16553	Nut, oil pan	AR	78	GM16820	Stud, water pump 5/16-24 x 3/8-16 x 2 9/16 RH	1
31	GM16526	Plug, oil drain (includes seal)	1	79	-	Not applicable	
32	GM16576	Seal, oil pan drain plug (O-ring)	1	80	GM16458	Bolt, engine front cover	2
33	GM16596	Bolt, oil pan	AR	81	GM16499	Cover, engine front	1
34	GM16596	Bolt, oil pan	AR	82	-	Not applicable	
35	GM16467	Reinforcement, oil pan LH	1	83	-	Not applicable	
35	GM16468	Reinforcement, oil pan RH	1	84	GM16394	Seal, crankshaft front oil	1
36	GM16449	Pan, oil	1	85	GM16594	Bolt, camshaft sprocket	3
37	GM16362	Gasket, oil pan	1	86	GM16463	Sprocket, camshaft (36 teeth)	1
38	GM16502	Stud, crankshaft rear oil seal retainer	2	87	GM16508	Chain, camshaft timing (roller chain)	1
39	GM16426	Nut, 1/4-20 x .234	1	88	GM16577	Plug, engine block oil galley	1
40	GM16506	Bolt, crankshaft rear oil seal housing	1	89	GM16575	Washer, camshaft sprocket	3
41	-	Not serviced separately		90	GM16581	Plug, engine block oil galley	AR
42	GM16505	Bolt, crankshaft rear oil seal housing	2	91	-	Not applicable	
43	GM16473	Housing, crankshaft rear oil seal	1	92	GM16428	Pin, locator 5/8 x 1 3/16	2
44	GM16518	Stud, crankshaft rear oil seal retainer	1	93	-	See Group 4	
45	GM16487	Gasket, crankshaft rear oil seal housing	1	94	GM16476	Pin, locator 1/4 x 5/8	2
46	GM16497	Stud, crankshaft bearing cap	AR	95	GM16476	Pin, locator 1/4 x 5/8	2
47	GM16588	Bolt, crankshaft bearing cap	10	96	GM16504	Plug, hex 1/4-18 x 0.56	2
48	-	Not serviced separately		97	GM16504	Plug, hex 1/4-18 x 0.56	2
49	GM16599	Pin, crankshaft rear oil seal locator	1	98	GM16474	Seal, crankshaft rear oil	1
50	GM16578	Pin, flywheel locator	1	99	GM16476	Pin, locator 1/4 x 5/8	2
51	-	See Group 4		100	GM16429	Plug, hex 1/4-18 x .69	1
52	-	Not applicable		101	-	See Group 3	
53	-	Not applicable		102	-	See Group 3	
54	-	Not applicable		103	-	See Group 3	

AR As Required

# Group 2: Engine Head/Upper End



6107\_2

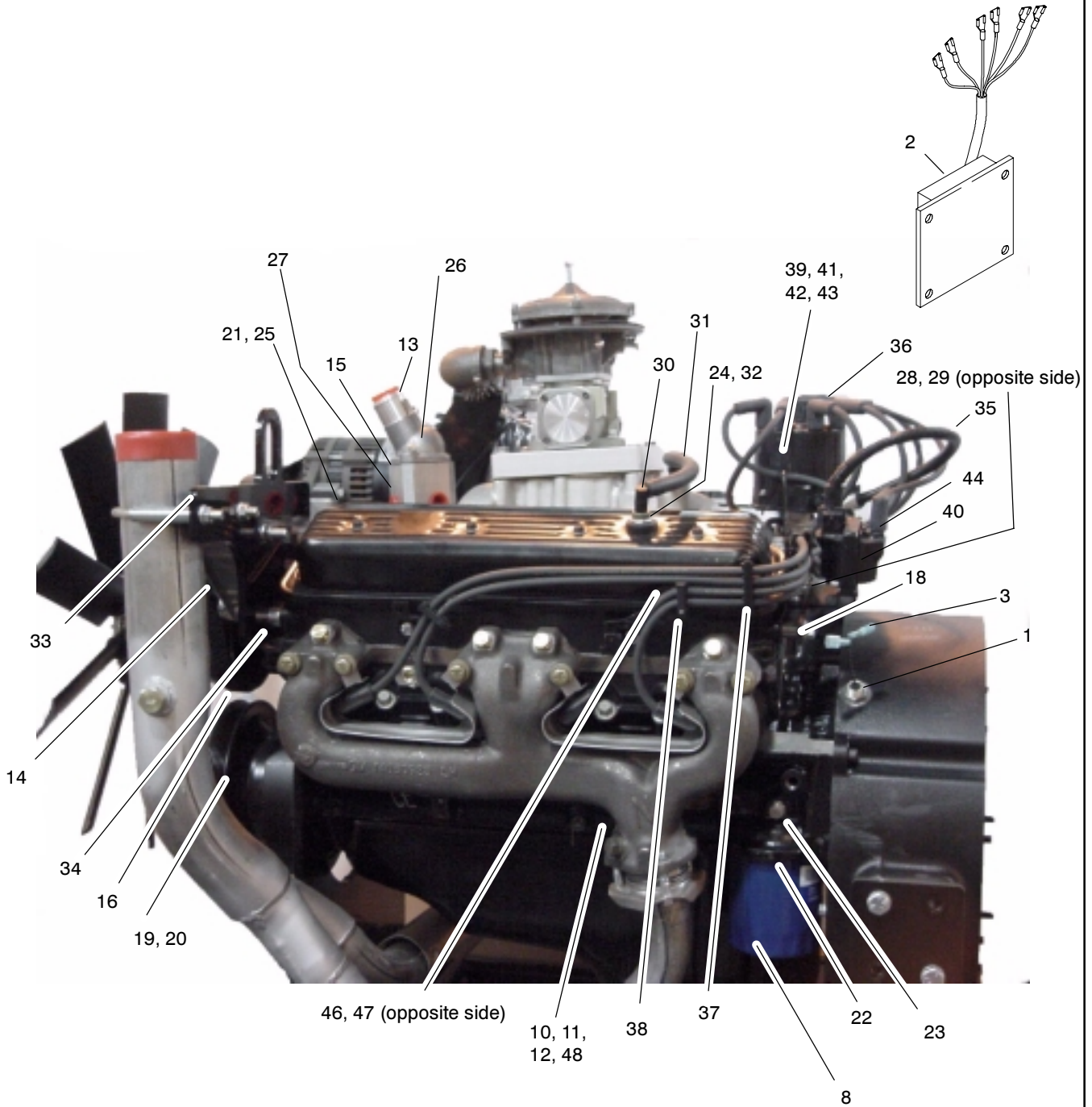
## Group 2: Engine Head/Upper End

Item	Part Number	Description	Qty.
			Var.
			1
1	GM16427	Bolt, valve rocker arm cover	8
2	GM16361	Cap, oil filler	1
3	GM16481	Cover, valve rocker arm LH	1
3	GM16480	Cover, valve rocker arm RH	1
4	GM16348	Gasket, valve rocker arm cover	2
5	GM16375	Bolt, cy. head, short (7/16 x 1 3/4)	16
6	GM16531	Spark plug	8
7	-	See Group 3	
8	-	See Group 3	
9	GM16510	Plug, 3/8-18 x .42	2
10	-	See Group 3	1
11	GM16401	Valve, intake standard	8
12	GM16464	Valve, exhaust standard	8
13	GM16523	Lifter, valve	16
14	GM16547	Pin, cylinder head locator	8
15	GM16353	Gasket, cylinder head	2
16	GM16450	Head, cylinder	2
17	GM16385	Seal, intake valve stem oil	8
19	GM16386	Spring, valve (w/o damper)	16
19	GM16342	Shield, valve stem oil	12
20	GM16374	Bolt, cy. hd, medium (7/16-14 x 3 1/16)	4
21	GM16496	Seal, exhaust valve stem oil	6
21	GM16385	Seal, intake valve stem oil	8
22	GM16373	Bolt, cy. head, long (7/16-14 x 3 51/64)	14
23	GM16402	Cap, valve spring	8
24	GM16529	Key, valve stem	32
24	-	See Group 8	1
26	GM16501	Rotator, valve	8
27	GM16493	Nut, valve rocker arm	16
28	-	Not serviced separately	
29	GM16584	Stud, valve rocker arm ball	16
30	GM16351	Arm kit, valve rocker	16
31	GM16515	Rod, valve push	16
32	-	See Group 8	1
33	-	See Group 8	2
34	-	See Group 3	2
35	-	See Group 3	1
36	-	See Group 3	1
37	-	See Group 3	
38	-	See Group 3	1
39	GM16510	Plug, 3/8-18 x .42	1
40	GM16453	Guide, valve lifter	8
41	GM16604	Sealer, intake manifold	AR
42	-	See Group 8	3

AR As Required

# Group 3: Engine Trim Parts

Items not shown: 4-7, 9, 17, 49-60



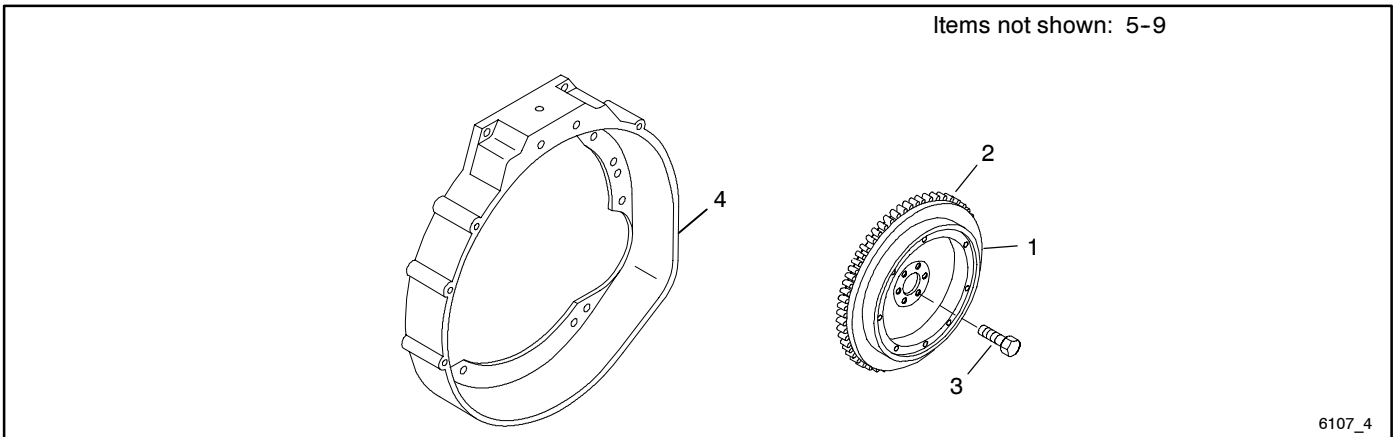
6107\_3

## Group 3: Engine Trim Parts

Item	Part Number	Description	Qty.	Item	Part Number	Description	Qty.
			Var.				Var.
1	GM16113	Sensor, mag. speed 5/8-18	1	29	GM16153	Support, spark plug wire	1
2	GM16174	Controller, governor	1	30	GM16157	Elbow, PCV system 5/8" 45 deg.	1
3	GM16822	Terminal, male	2	31	GM16158	Hose, PCV, 3/8"	10
4	#	Nut, 1/2-13	4	32	GM16159	Valve, PCV	1
5	#	Washer, lock 1/2"	4	33	GM16172	Bracket, exhaust/lifting eye	1
6	#	Washer, flat 1/2"	8	34	GM16173	Spacer, .75 OD x .38 ID x .50	3
7	#	Bolt, 1/2-13 x 1 1/2 hex head gr. 5	4	35	GM16179	Harness, distributor to coil	1
8	GM16114	Filter, oil (PF-25)	1	36	GM16184	Wire, spark plug set	1
9	GM16115	Tube, dipstick 5.7L	1	37	GM16185	Retainer, 4 wire spark plug	4
10	GM16116	Adapter, freeze plug 1/2" NPT	2	38	GM16186	Retainer, 2 wire spark plug	4
11	GM16118	Plug, 1/2" NPT brass	2	39	GM16187	Distributor	1
12	GM16119	Pipe, street elbow 1/2" NPT	1	39	GM16570	Cap, distributor	1
13	GM16120	Cover, thermostat	1	39	GM16420	Rotor, distributor	1
14	GM16123	Bracket, pulley	1	40	GM16188	Coil, ignition	1
15	GM16124	Gasket, thermostat cover	2	41	GM16191	Clamp, distributor	1
16	GM16127	Pulley, fan	1	42	GM16192	Gasket, distributor	1
17	GM16128	Dipstick, oil 5.7L	1	43	GM16193	Bolt, distributor	1
18	GM16129	Spacer	4	44	GM16194	Wire, coil 7 mm x 13 1/2"	1
19	GM16130	Washer, crankshaft pulley	1	45	GM16195	Retainer, spark plug wire	1
20	GM16131	Pulley, crankshaft/fan	1	46	GM16196	Retainer, spark plug wire	1
21	GM16140	Cap, bypass 5/8"	1	47	GM16197	Retainer, spark plug wire	1
22	GM16141	Adapter, oil filter	1	48	GM16223	Shield, heat	1
23	GM16142	Bolt, oil filter adapter	2	49	#	Washer, lock 1/4" SAE	4
24	GM16143	Grommet, PCV valve	2	50	#	Nut, fanged 3/8-16	1
25	GM16144	Clamp, hose 1"	1	51	#	Bolt, 3/8-6 x 3/4 hex head gr. 5	2
26	GM16146	Thermostat, 160 degree	1	52	#	Bolt, 3/8-16 x 1 1/2 hex head gr. 5	4
27	GM16148	Spacer, thermostat cover	1	53	#	Bolt, 3/8-16 x 3 1/2 hex head gr. 5	2
28	GM16152	Support, spark plug wire	1	54	#	Bolt, 3/8-16 x 4 1/2 hex head gr. 5	2
				55	#	Washer, lock 3/8	10
				56	#	Washer, flat 3/8 SAE	4
				57	#	Bolt, 3/8-24 x 1 socket head grade 5	3
				58	#	Bolt, 1/4-20 x 1/2"	4
				59	#	Bolt, (CS) 7/16-20 x 2 1/2 gr. 8	1
				60	X	Label, PSI serial number 5.7L	1

# Common hardware. Procure locally.

## Group 4: Flywheel



Item	Part Number	Description	Qty.
			Var.
1	GM16814	Flywheel, SAE10-11.5	1
2	GM16821	Gear, starter ring	1
3	#	Bolt, 7/16-20 x 1 grade 5	6
4	GM16135	Housing, flywheel	1
5	GM16189	Plate, starter	1
6	#	Washer, flat 1/4" SAE	4
7	#	Washer, lock 1/4" SAE	4
8	#	Bolt, 1/4-20 x 3/4 hex head gr. 5	4
9	#	Bolt, 3/8-16 x 1 1/4 socket head gr. 5	6

## Group 5: Starter

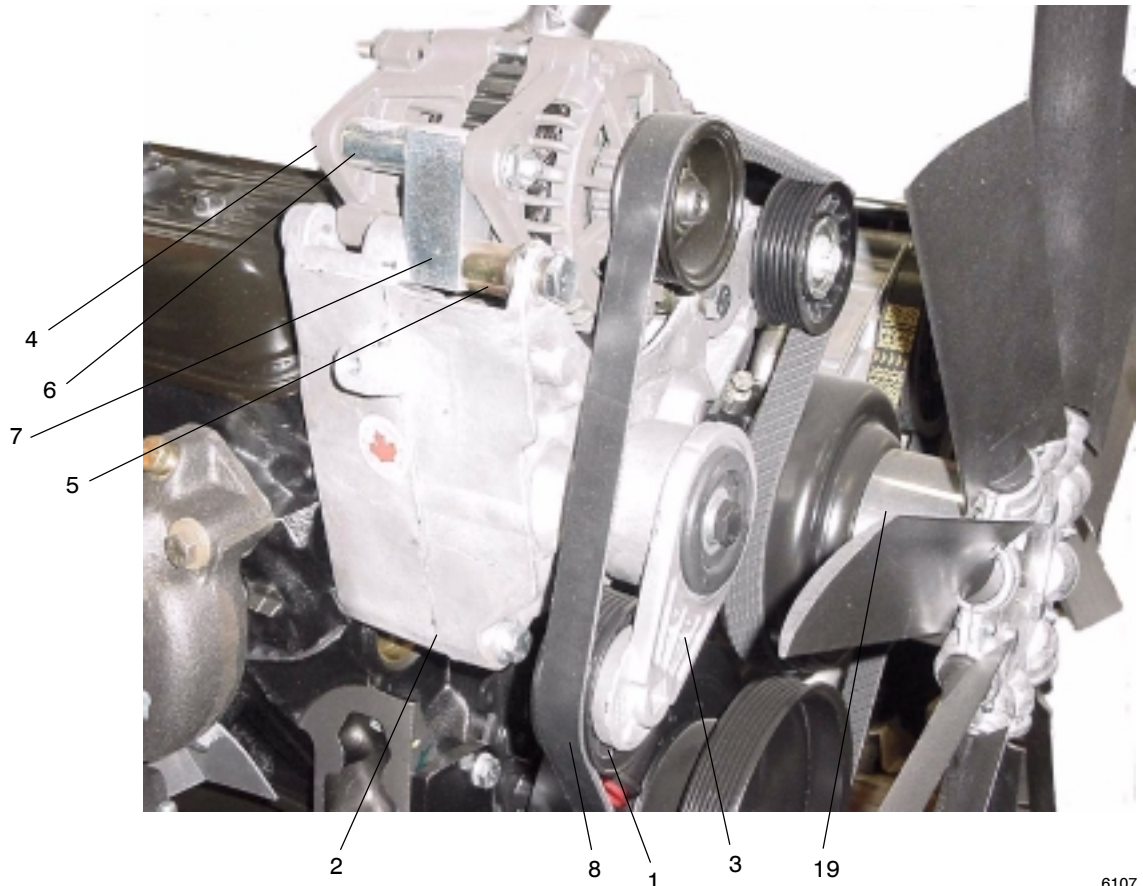


Item	Part Number	Description	Qty.
			Var.
1	GM16178	Starter	1
2	GM16190	Bolt, starter, 4"	2
3	#	Nut, M5-.80	1
4	#	Washer, lock M5	1
5	#	Nut, flanged M8-1.25	1

# Common hardware. Procure locally.

## Group 6: Alternator, Pulley, and Belt

Items not shown: 9-18, 20-22

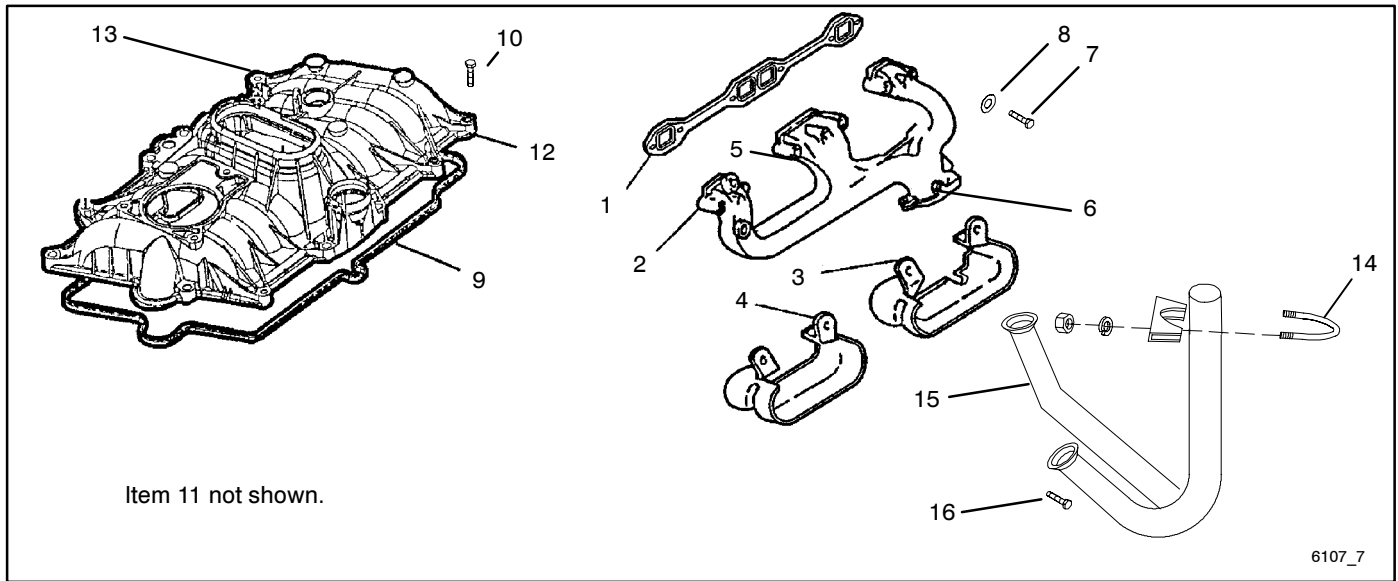


6107\_6

Item	Part Number	Description	Qty.
			Var. 1
1	GM16121	Pulley, idler	1
2	GM16122	Bracket, alternator	1
3	GM16126	Pulley, tensioner	1
4	GM16180	Alternator, 70 amp	1
5	GM16181	Spacer, mount, 10 mm	2
6	GM16182	Spacer, mount, 8 mm	1
7	GM16183	Block, mount	2
8	GM16132	Belt, fan standard	1
9	#	Nut, flanged M8-1.25	1
10	#	Washer, lock 5/16	1
11	#	Bolt, M8-1.25 x 50 hex head gr. 5	1
12	#	Bolt, M10-1.50 x 90 hex head gr. 8.8	2
13	#	Washer, lock M10	1
14	#	Bolt, 3/8-16 x 4 1/2 hex head gr. 5	3
15	#	Washer, lock 3/8	3
16	#	Washer, flat 3/8 SAE	4
17	#	Bolt, M10-1.50 x 85 hex head gr. 8.8	2
18	#	Bolt, M8-1.25 x 110 hex head gr. 8.8	1
19	GM16147	Spacer, fan	1
20	#	Bolt, M8-1.25 x 20 hex head gr. 8.8	4
21	#	Washer, lock 5/16	4
22	#	Bolt, M8-1.25 x 80 socket head gr. 8.8	4

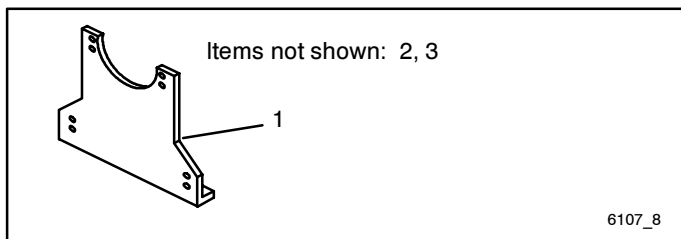
# Common hardware. Procure locally.

## Group 7: Intake and Exhaust System



Item	Part Number	Description	Qty.
			Var.
			1
1	GM16199	Gasket, manifold exhaust	2
2	GM16216	Manifold, exhaust left side	2
3	GM16217	Shield, heat exhaust (2 wire)	3
4	GM16218	Shield, heat	1
5	GM16219	Plug, exhaust 1/4" brass	8
6	GM16220	Plug, exhaust	2
7	#	Bolt, 3/8-16 X 2 1/4 hex head gr. 5	12
8	GM16225	Washer, flat 3/8" (hardened)	12
9	GM16133	Gasket, intake manifold	1
10	GM16134	Bolt, intake manifold	8
11	GM16161	Tee, fitting vacuum	1
12	GM16222	Manifold, intake (alum.)	1
13	#	Plug, 1/2" NPT	2
14	GM16145	Clamp, muffler 3"	1
15	GM16214	Pipe, Y w/heat shield	1
16	#	Bolt, 3/8-16 x 1 3/4 hex head	6

## Group 8: Engine Mounting

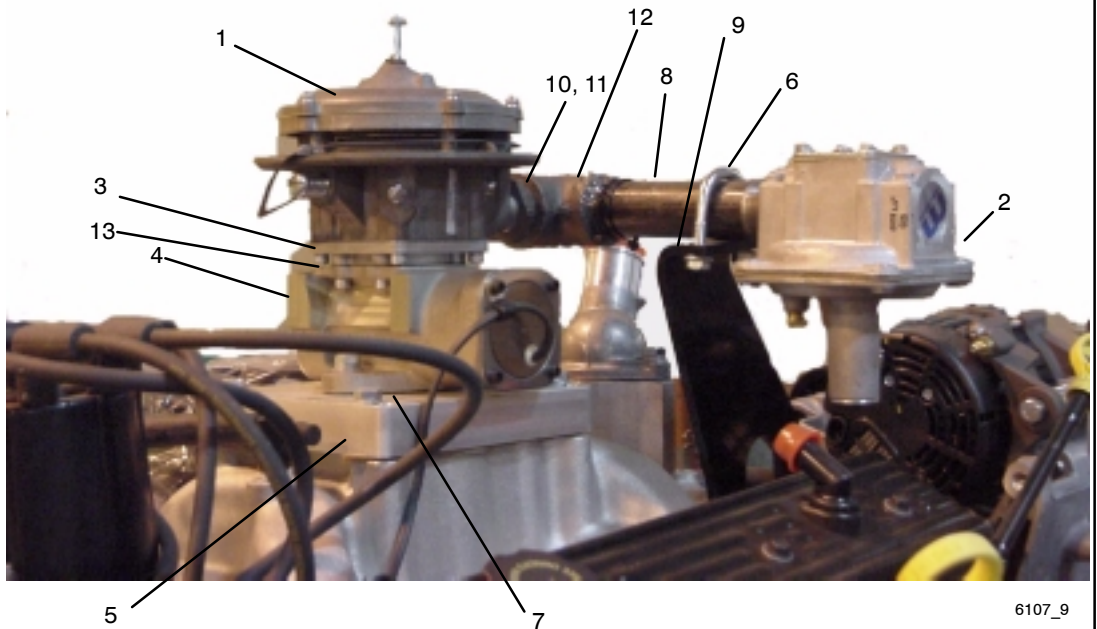


Item	Part Number	Description	Qty.
			Var.
			1
1	GM16139	Mount, front 3/8"	1
2	#	Bolt, 3/8-16 x 1 1/4 hex head gr. 5	4
3	#	Washer, lock 3/8	4

# Common hardware. Procure locally.

# Group 9: Fuel System

Items not shown: 14-22



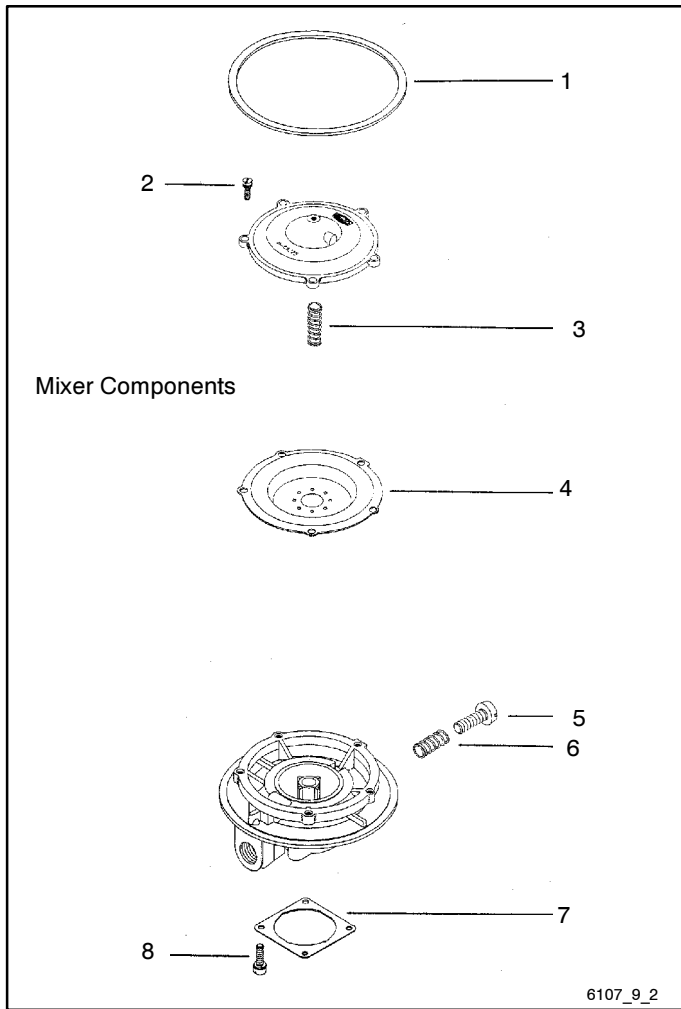
6107\_9

Item	Part Number	Description	Qty.	
			1	2
1	GM16165	Mixer, nat. gas (complete assembly)*	1	
1	GM17382	Mixer, LP (complete assembly)*		1
2	GM16166	Regulator, fuel 1" NPT	1	1
3	GM16167	Adapter, power flow	1	1
4	GM16169	Valve	1	1
5	GM16175	Adapter, manifold	1	1
6	GM16177	Clamp, U-bolt 5/16-18 x 1 5/8	1	1
7	GM16202	Gasket, intake manifold	1	1
8	GM16203	Pipe, nipple 1 x 6"	1	1
9	GM16204	Bracket, pipe support	1	1
10	GM16205	Bushing, 1-3/4"	1	1
11	GM16206	Pipe, closed nipple, 3/4"	1	1
12	GM16207	Pipe, 1" fitting elbow 90 deg.	1	1
13	GM16150	Gasket, carburetor	1	1
14	#	Washer, lock 5/16	6	6
15	#	Washer, flat 5/16	2	2
16	#	Bolt, 5/16-18 x 1 hex head gr. 5	2	2
17	#	Bolt, 3/8-16 x 3/4 hex head gr. 5	2	2
18	#	Washer, lock 3/8	2	2
19	#	Washer, flat 3/8 SAE	2	2
20	#	Washer, lock 7/16	2	2
21	#	Washer, flat 7/16	2	2
22	#	Bolt, 5/16-18 x 1 3/4 hex head gr. 5	4	4

# Common hardware. Procure locally.

\* Mixer components are shown on following page.

# Group 9: Fuel System, continued



Item	Part Number	Description	Qty.	
			1	2
1	GM17393	Gasket, mixer to air horn	1	1
2	GM17388	Screw, 10-24 x 5/8 SEMS	5	5
3	GM17394	Spring, air valve	1	1
4	GM17384	Diaphragm, silicone (nat. gas)	1	
4	GM17009	Diaphragm, silicone (LP)		1
5	GM17390	Idle screw	1	1
6	GM17391	Spring, idle screw	1	1
7	GM17395	Gasket, throttle body to mixer	1	1
8	GM17396	Screw, 12-24 x 5/8 SEMS	4	4

# Notes

