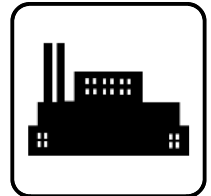


Wiring Diagrams

Fast-Response™ II Industrial Generator Sets



Models:

20ROZJB
20-230REOZJB

Controllers:

Decision-Maker™ 550
Decision-Maker™ 3+
Decision-Maker™ 1

KOHLER[®]
POWER SYSTEMS

ISO 9001
KOHLER
GENERATORS
INTERNATIONALLY REGISTERED

TP-6146 10/01

This manual provides wiring diagrams for the 20ROZJB and 20-230REOZJB generator sets equipped with one of the following controllers:

- Decision-Maker™ 550
- Decision-Maker™ 3+
- Decision-Maker™ 1

At the time of print this manual applied to the model numbers and specification (spec) numbers shown in the Wiring Diagram Cross-Reference chart. On occasion this manual may apply to specs not listed in the Wiring Diagram Cross-Reference chart.

Information in this publication represents data available at the time of print. Kohler Co. reserves the right to change this publication and the products represented without notice and without any obligation or liability whatsoever.

x:in:001:002

Service Assistance

Service Information

Please contact a local authorized distributor/dealer for sales, service, or other information about Kohler Co. Generator Division products.

- Look on the product or in the information included with the product
- Consult the Yellow Pages under the heading Generators—Electric
- Visit the Kohler Co. Generator Division web site at www.kohlergenerators.com
- Inside the U.S.A. and Canada, call 1-800-544-2444
- Outside the U.S.A. and Canada, call the nearest regional office

Africa, Europe, Middle East

London Regional Office
Langley, Slough, England
Phone: (44) 1753-580-771
Fax: (44) 1753-580-036

Australia

Australia Regional Office
Queensland, Australia
Phone: (617) 3893-0061
Fax: (617) 3893-0072

China

China Regional Office
Shanghai, People's Republic of China
Phone: (86) 21-6482 1252
Fax: (86) 21-6482 1255

India, Bangladesh, Sri Lanka

India Regional Office
Bangalore, India
Phone: (91) 80-2284270
(91) 80-2284279
Fax: (91) 80-2284286

Japan

Japan Regional Office
Tokyo, Japan
Phone: (813) 3440-4515
Fax: (813) 3440-2727

Latin America

Latin America Regional Office
Lakeland, Florida, U.S.A.
Phone: (941) 619-7568
Fax: (941) 701-7131

South East Asia

Singapore Regional Office
Singapore, Republic of Singapore
Phone: (65) 264-6422
Fax: (65) 264-6455

X:in:008:001

Wiring Diagrams

Use the Wiring Diagram Cross-Reference chart to determine the wiring diagram version number for a given model number and spec number. Then find that version number and the controller type on the Controller

Wiring Diagrams Reference chart to determine the wiring diagram numbers for your unit. Refer to the generator set operation manual for controller type identification, if necessary.

Wiring Diagram Cross-Reference

Generator Set Model No.	Hz	Generator Set Spec No.	Wiring Diagram Version No.
20ROZJB	50/60	GM19369-GA1, 2	1
20REOZJB	50/60	GM19369-GA3, 4	1
30REOZJB	50/60	GM19369-GA5, 6	1
40REOZJB	50/60	GM19369-GA7, 8	1
50REOZJB	50/60	GM21199-GA1, 2, 3, 4	1
60REOZJB	50/60	GM21199-GA5, 6, 7, 8	1
80REOZJB	50/60	GM21199-GA9, 10, 11, 12	1
100REOZJB	50/60	GM21528-GA1, 2, 3, 4	1
125REOZJB	50/60	GM21528-GA5, 6, 7, 8	1
150REOZJB	50/60	GM20148-GA1, 2, 3, 4	1
180REOZJB	50/60	GM19534-GA1, 2, 3, 4	1
200REOZJB	50/60	GM19534-GA5, 6	2
230REOZJB	50/60	GM19534-GA7, 8	2

20ROZJB and 20-180REOZJB Controller Wiring Diagrams Reference

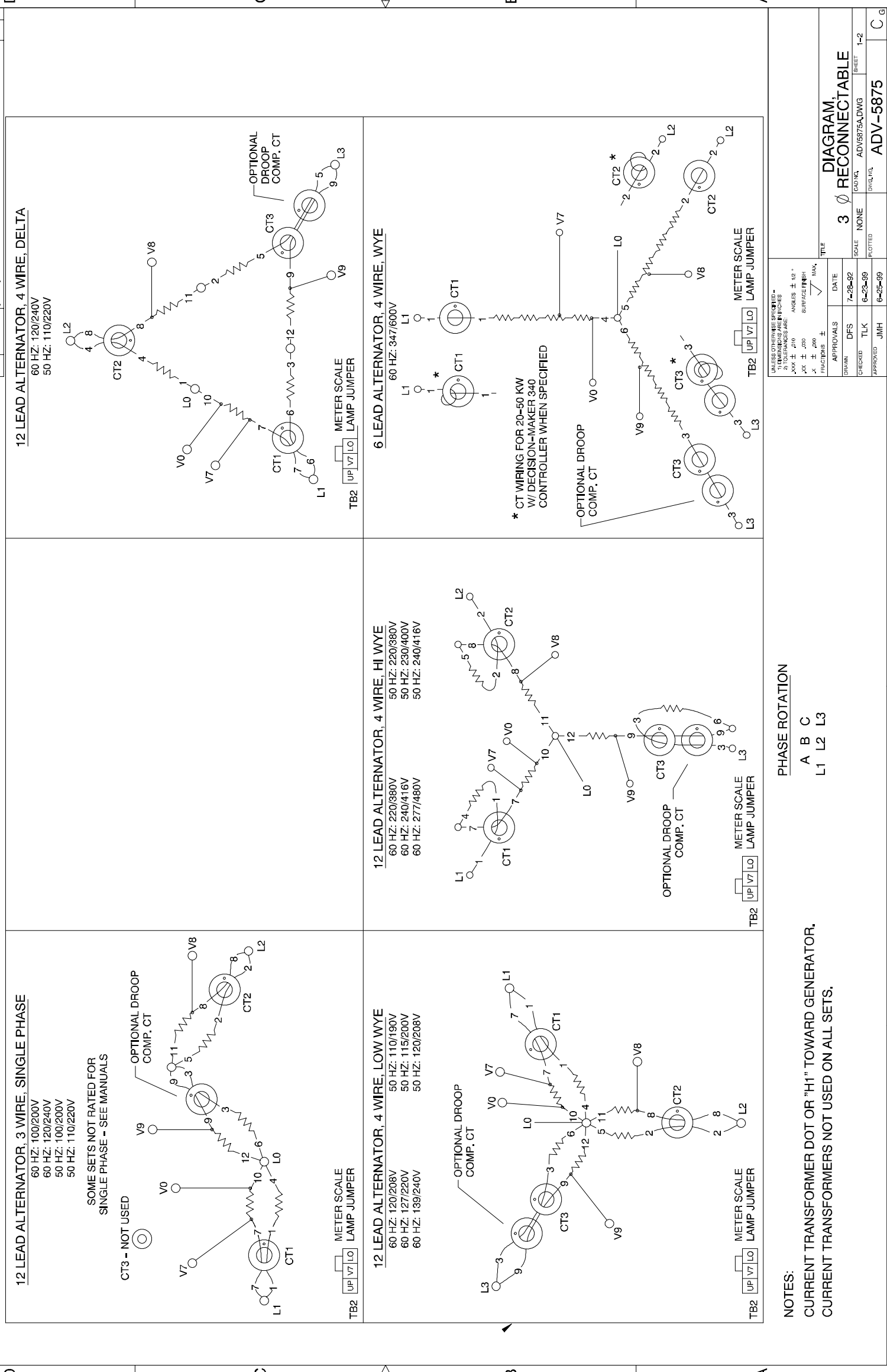
Controller Description	Version 1	Page
Decision-Maker™ 550		
Point-to-Point Wiring Diagram		
Sheet 1	GM19530A-A	14
Sheet 2	GM19530B-A	15
Schematic Diagram		
Sheet 1	ADV-6624A-A	5
Sheet 2	ADV-6624B-A	6
Accessory Connections		
Accessories	GM16088A-C	9
Remote Annunciator Kit	GM16088B-C	10
Decision-Maker™ 3+		
Point-to-Point Wiring Diagram	GM19432-	11
Schematic Diagram	ADV-6619-	2
Accessory Connections		
Accessories	328912A-F	18
Remote Annunciator Kit	328912B-F	19
Decision-Maker™ 1		
Standard and Standard with Engine Gauges		
Point-to-Point Wiring Diagram	GM19446-A	12
Schematic Diagram	ADV-6620-	3
Expanded with Engine Gauges and AC Meters		
Point-to-Point Wiring Diagram	GM19447-	13
Schematic Diagram	ADV-6621-	4
Generator Reconnections	ADV-5875A-D	1

200-230REOZJB Controller Wiring Diagrams Reference

Controller Description	Version 2	Page
Decision-Maker™ 550		
Point-to-Point Wiring Diagram		
Sheet 1	GM19531A-B	16
Sheet 2	GM19531B-B	17
Schematic Diagram		
Sheet 1	ADV-6625A-A	7
Sheet 2	ADV-6625B-A	8
Accessory Connections		
Accessories	GM16088A-C	9
Remote Annunciator Kit	GM16088B-C	10
Decision-Maker™ 3+		
Point-to-Point Wiring Diagram	GM19432-	11
Schematic Diagram	ADV-6619-	2
Accessory Connections		
Accessories	328912A-F	18
Remote Annunciator Kit	328912B-F	19
Generator Reconnections	ADV-5875A-D	1

Notes

REV	DATE	REVISION	BY	APP
B	11-1-88	(B-1,2,3,4 C-1) OPTIONAL DROOP MOVED FROM L2 TO L3 [56797]	JS	
C	6-2-89	(C-3) MARINE ONLY: LO REMOVED, LO WAS L1, L1 WAS L2, TAPE TWO PLACES WAS ONE [56696]	SAM	
D	6-17-89	DIAGRAMS UPDATED: (B-2, C-4) NOTE & CT'S ADDED FOR 20-50 KW W/ DECISION-MAKER 340 & DIGITAL CONTROLLERS [59021]	KAR	



UNLESS OTHERWISE SPECIFIED - DIMENSIONS ARE IN INCHES & TOLERANCES ARE:		TITLE	
ANGLES	± 1/2°	DATE	7-25-82
HOLE DIA	± .015	APPROVALS	DFS
SURFACE FINISH	AS MAN.	CHECKED	TLK
FRACTIONS	±	APPROVED	JMH
DRAWN	DFS	SCALE	NONE
TITLE	DIAGRAM, RECONNECTABLE		
PROJECT	ADV5875ADWVG	SHEET	1-2
DWG. NO.	ADV-5875	PIOTTED	C G

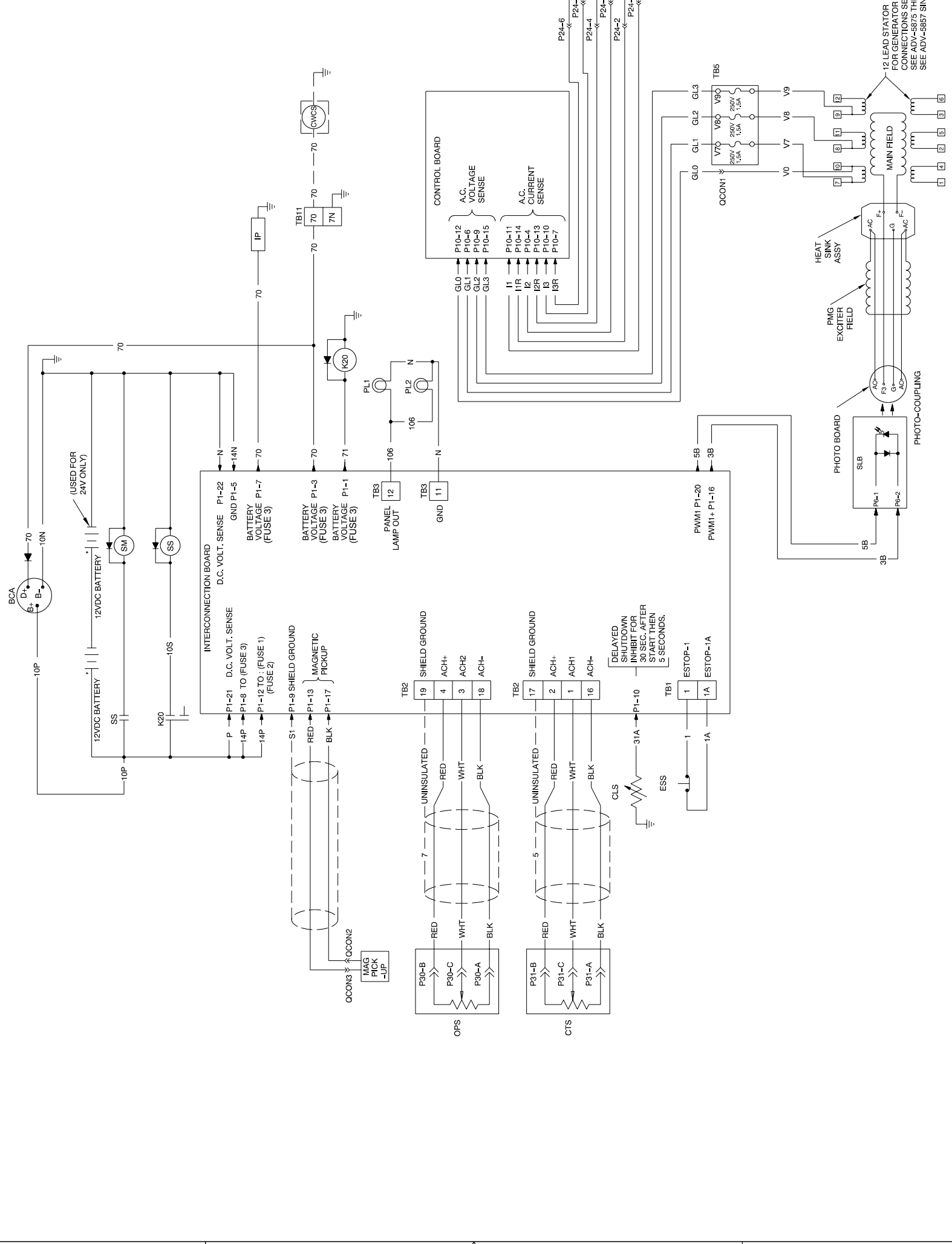
Generator Reconnections, ADV-5875A-D

1 2 3 4 5 6 7 8

REV	DATE	DESCRIPTION	BY	CHK
-	3-2-01	NEW DRAWING (B4112)	JS	
A	3-7-01	(SEE SHEET # 66566)	JS	

LEGEND

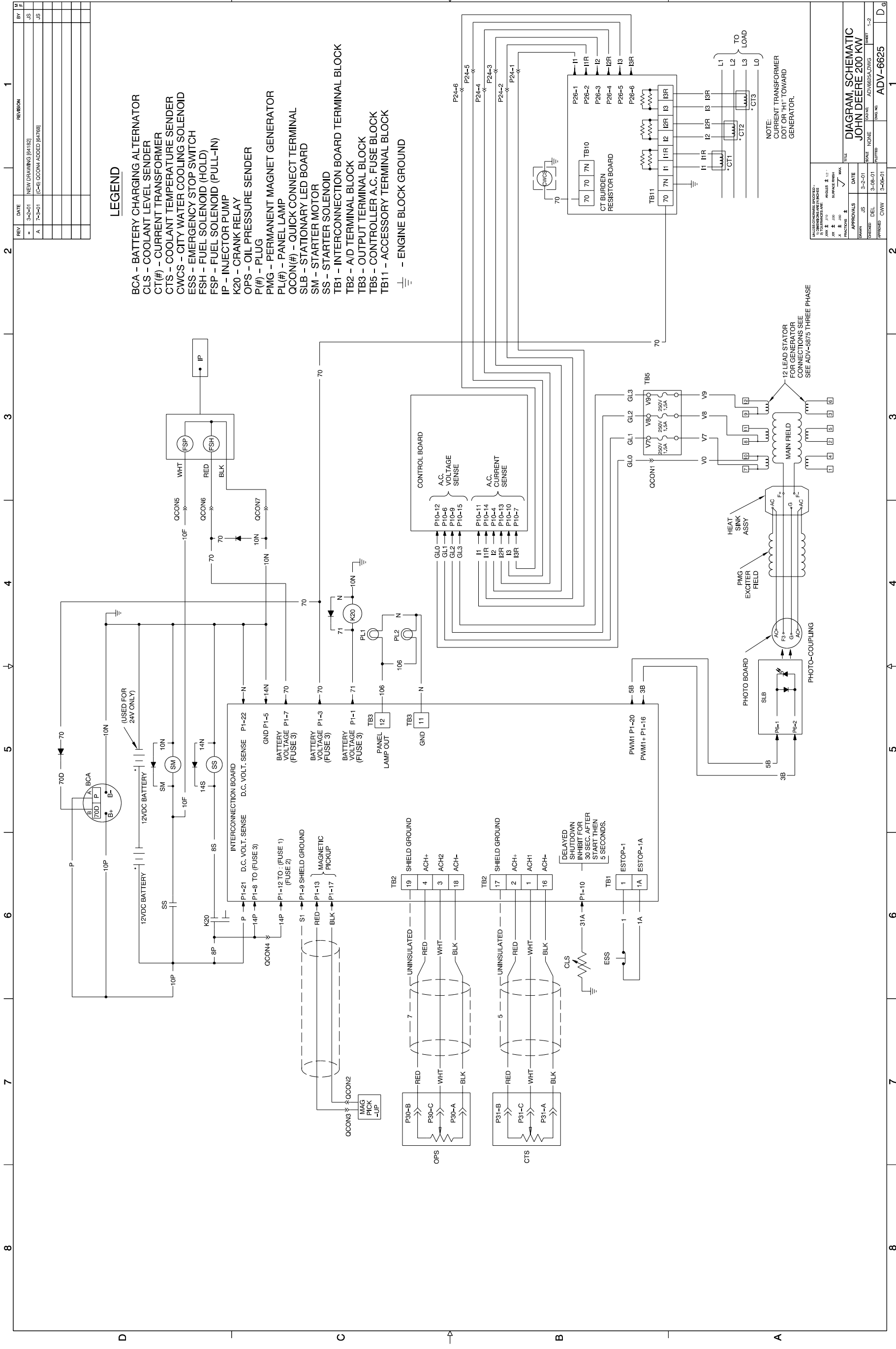
- BCA - BATTERY CHARGING ALTERNATOR
- CLS - COOLANT LEVEL SENDER
- CT(#)- CURRENT TRANSFORMER
- CTS - COOLANT TEMPERATURE SENDER
- CWCS - CITY WATER COOLING SOLENOID
- ESS - EMERGENCY STOP SWITCH
- IP - INJECTOR PUMP
- K20 - STARTER RELAY
- OPS - OIL PRESSURE SENDER
- P(#)- PLUG
- PMG - PERMANENT MAGNET GENERATOR
- PL(#)- PANEL LAMP
- QCON(#)- QUICK CONNECT TERMINAL
- SLB - STATIONARY LED BOARD
- SM - STARTER MOTOR
- SS - STARTER SOLENOID
- TB1 - INTERCONNECTION BOARD TERMINAL BLOCK
- TB2 - A/D TERMINAL BLOCK
- TB3 - OUTPUT TERMINAL BLOCK
- TB5 - CONTROLLER A.C. FUSE BLOCK
- TB11 - ACCESSORY TERMINAL BLOCK
- ⏏ - ENGINE BLOCK GROUND



DATE	3-2-01	REVISED	3-2-01
DRAWN	JS	APPROVED	JS
DESIGNED	DEL	DATE	3-2-01
PROJECT	CWV	DATE	3-2-01
NO.	ADV-6624	NO.	ADV-6624
REV.	1-2	REV.	1-2

DIAGRAM, SCHEMATIC

20-180 KW



REV	DATE	REVISION	BY
-	3-2-01	NEW DRAWING (P4112)	JS
A	7-2-01	(C-6) OCON# ADDED (P4788)	JS

APPROVALS	DATE	DESIGN	DATE	DESIGN	DATE	DESIGN	DATE
✓	3-2-01	✓	3-2-01	✓	3-2-01	✓	3-2-01
✓	3-2-01	✓	3-2-01	✓	3-2-01	✓	3-2-01

FIG.	TITLE
1	DIAGRAM, SCHEMATIC JOHN DEERE 200 KW

DATE	BY	CHKD	APPV	DATE	BY	CHKD	APPV
3-2-01	JS	JS	JS	3-2-01	JS	JS	JS
3-2-01	JS	JS	JS	3-2-01	JS	JS	JS

FIG.	DATE	REV.	REV. DATE
1	3-2-01	1	3-2-01
1	3-2-01	2	3-2-01

FIG.	DATE	REV.	REV. DATE
1	3-2-01	1	3-2-01
1	3-2-01	2	3-2-01

FIG.	DATE	REV.	REV. DATE
1	3-2-01	1	3-2-01
1	3-2-01	2	3-2-01

FIG.	DATE	REV.	REV. DATE
1	3-2-01	1	3-2-01
1	3-2-01	2	3-2-01

FIG.	DATE	REV.	REV. DATE
1	3-2-01	1	3-2-01
1	3-2-01	2	3-2-01

FIG.	DATE	REV.	REV. DATE
1	3-2-01	1	3-2-01
1	3-2-01	2	3-2-01

FIG.	DATE	REV.	REV. DATE
1	3-2-01	1	3-2-01
1	3-2-01	2	3-2-01

FIG.	DATE	REV.	REV. DATE
1	3-2-01	1	3-2-01
1	3-2-01	2	3-2-01

FIG.	DATE	REV.	REV. DATE
1	3-2-01	1	3-2-01
1	3-2-01	2	3-2-01

FIG.	DATE	REV.	REV. DATE
1	3-2-01	1	3-2-01
1	3-2-01	2	3-2-01

FIG.	DATE	REV.	REV. DATE
1	3-2-01	1	3-2-01
1	3-2-01	2	3-2-01

FIG.	DATE	REV.	REV. DATE
1	3-2-01	1	3-2-01
1	3-2-01	2	3-2-01

FIG.	DATE	REV.	REV. DATE
1	3-2-01	1	3-2-01
1	3-2-01	2	3-2-01

FIG.	DATE	REV.	REV. DATE
1	3-2-01	1	3-2-01
1	3-2-01	2	3-2-01

FIG.	DATE	REV.	REV. DATE
1	3-2-01	1	3-2-01
1	3-2-01	2	3-2-01

FIG.	DATE	REV.	REV. DATE
1	3-2-01	1	3-2-01
1	3-2-01	2	3-2-01

FIG.	DATE	REV.	REV. DATE
1	3-2-01	1	3-2-01
1	3-2-01	2	3-2-01

FIG.	DATE	REV.	REV. DATE
1	3-2-01	1	3-2-01
1	3-2-01	2	3-2-01

FIG.	DATE	REV.	REV. DATE
1	3-2-01	1	3-2-01
1	3-2-01	2	3-2-01

FIG.	DATE	REV.	REV. DATE
1	3-2-01	1	3-2-01
1	3-2-01	2	3-2-01

FIG.	DATE	REV.	REV. DATE
1	3-2-01	1	3-2-01
1	3-2-01	2	3-2-01

FIG.	DATE	REV.	REV. DATE
1	3-2-01	1	3-2-01
1	3-2-01	2	3-2-01

FIG.	DATE	REV.	REV. DATE
1	3-2-01	1	3-2-01
1	3-2-01	2	3-2-01

FIG.	DATE	REV.	REV. DATE
1	3-2-01	1	3-2-01
1	3-2-01	2	3-2-01

FIG.	DATE	REV.	REV. DATE
1	3-2-01	1	3-2-01
1	3-2-01	2	3-2-01

FIG.	DATE	REV.	REV. DATE
1	3-2-01	1	3-2-01
1	3-2-01	2	3-2-01

FIG.	DATE	REV.	REV. DATE
1	3-2-01	1	3-2-01
1	3-2-01	2	3-2-01

FIG.	DATE	REV.	REV. DATE
1	3-2-01	1	3-2-01
1	3-2-01	2	3-2-01

FIG.	DATE	REV.	REV. DATE
1	3-2-01	1	3-2-01
1	3-2-01	2	3-2-01

FIG.	DATE	REV.	REV. DATE
1	3-2-01	1	3-2-01
1	3-2-01	2	3-2-01

FIG.	DATE	REV.	REV. DATE
1	3-2-01	1	3-2-01
1	3-2-01	2	3-2-01

FIG.	DATE	REV.	REV. DATE
1	3-2-01	1	3-2-01
1	3-2-01	2	3-2-01

FIG.	DATE	REV.	REV. DATE
1	3-2-01	1	3-2-01
1	3-2-01	2	3-2-01

FIG.	DATE	REV.	REV. DATE
1	3-2-01	1	3-2-01
1	3-2-01	2	3-2-01

FIG.	DATE	REV.	REV. DATE
1	3-2-01	1	3-2-01
1	3-2-01	2	3-2-01

FIG.	DATE	REV.	REV. DATE
1	3-2-01	1	3-2-01
1	3-2-01	2	3-2-01

FIG.	DATE	REV.	REV. DATE
1	3-2-01	1	3-2-01
1	3-2-01	2	3-2-01

FIG.	DATE	REV.	REV. DATE
1	3-2-01	1	3-2-01
1	3-2-01	2	3-2-01

FIG.	DATE	REV.	REV. DATE
1	3-2-01	1	3-2-01
1	3-2-01	2	3-2-01

FIG.	DATE	REV.	REV. DATE
1	3-2-01	1	3-2-01
1	3-2-01	2	3-2-01

FIG.	DATE	REV.	REV. DATE
1	3-2-01	1	3-2-01
1	3-2-01	2	3-2-01

FIG.	DATE	REV.	REV. DATE
1	3-2-01	1	3-2-01
1	3-2-01	2	3-2-01

FIG.	DATE	REV.	REV. DATE
1	3-2-01	1	3-2-01
1	3-2-01	2	3-2-01

FIG.	DATE	REV.	REV. DATE
1	3-2-01	1	3-2-01
1	3-2-01	2	3-2-01

FIG.	DATE	REV.	REV. DATE
1	3-2-01	1	3-2-01
1	3-2-01	2	3-2-01

FIG.	DATE	REV.	REV. DATE
1	3-2-01	1	3-2-01
1	3-2-01	2	3-2-01

FIG.	DATE	REV.	REV. DATE
1	3-2-01	1	3-2-01
1	3-2-01	2	3-2-01

FIG.	DATE	REV.	REV. DATE
1	3-2-01	1	3-2-01
1	3-2-01	2	3-2-01

FIG.	DATE	REV.	REV. DATE
1	3-2-01	1	3-2-01
1	3-2-01	2	3-2-01

FIG.	DATE	REV.	REV. DATE
1	3-2-01	1	3-2-01
1	3-2-01	2	3-2-01

FIG.	DATE	REV.	REV. DATE
1	3-2-01	1	3-2-01
1	3-2-01	2	3-2-01

FIG.	DATE	REV.	REV. DATE
1	3-2-01	1	3-2-01
1	3-2-01	2	3-2-01

FIG.	DATE	REV.	REV. DATE
1	3-2-01	1	3-2-01
1	3-2-01	2	3-2-01

FIG.	DATE	REV.	REV. DATE
1	3-2-01	1	3-2-01
1	3-2-01	2	3-2-01

FIG.	DATE	REV.	REV. DATE
1	3-2-01	1	3-2-01
1	3-2-01	2	3-2-01

FIG.	DATE	REV.	REV. DATE
1	3-2-01	1	3-2-01
1	3-2-01	2	3-2-01

FIG.	DATE	REV.	REV. DATE
1	3-2-01	1	3-2-01
1	3-2-01	2	3-2-01

FIG.	DATE	REV.	REV. DATE
1	3-2-01	1	3-2-01
1	3-2-01	2	3-2-01

FIG.	DATE	REV.	REV. DATE
1	3-2-01	1	3-2-01
1	3-2-01	2	3-2-01

FIG.	DATE	REV.	REV. DATE
1	3-2-01	1	3-2-01
1	3-2-01	2	3-2-01

FIG.	DATE	REV.	REV. DATE
1	3-2-01	1	3-2-01
1	3-2-01	2	3-2-01

FIG.	DATE	REV.	REV. DATE
1	3-2-01	1	3-2-01
1	3-2-01	2	3-2-01

FIG.	DATE	REV.	REV. DATE
1	3-2-01	1	3-2-01
1	3-2-01	2	3-2-01

FIG.	DATE	REV.	REV. DATE
1	3-2-01	1	3-2-01
1	3-2-01	2	3-2-01

FIG.	DATE	REV.	REV. DATE
1	3-2-01	1	3-2-01
1	3-2-01	2	3-2-01

FIG.	DATE	REV.	REV. DATE
1	3-2-01	1	3-2-01
1	3-2-01	2	3-2-01

FIG.	DATE	REV.	REV. DATE
1	3-2-01	1	3-2-01
1	3-2-01	2	3-2-01

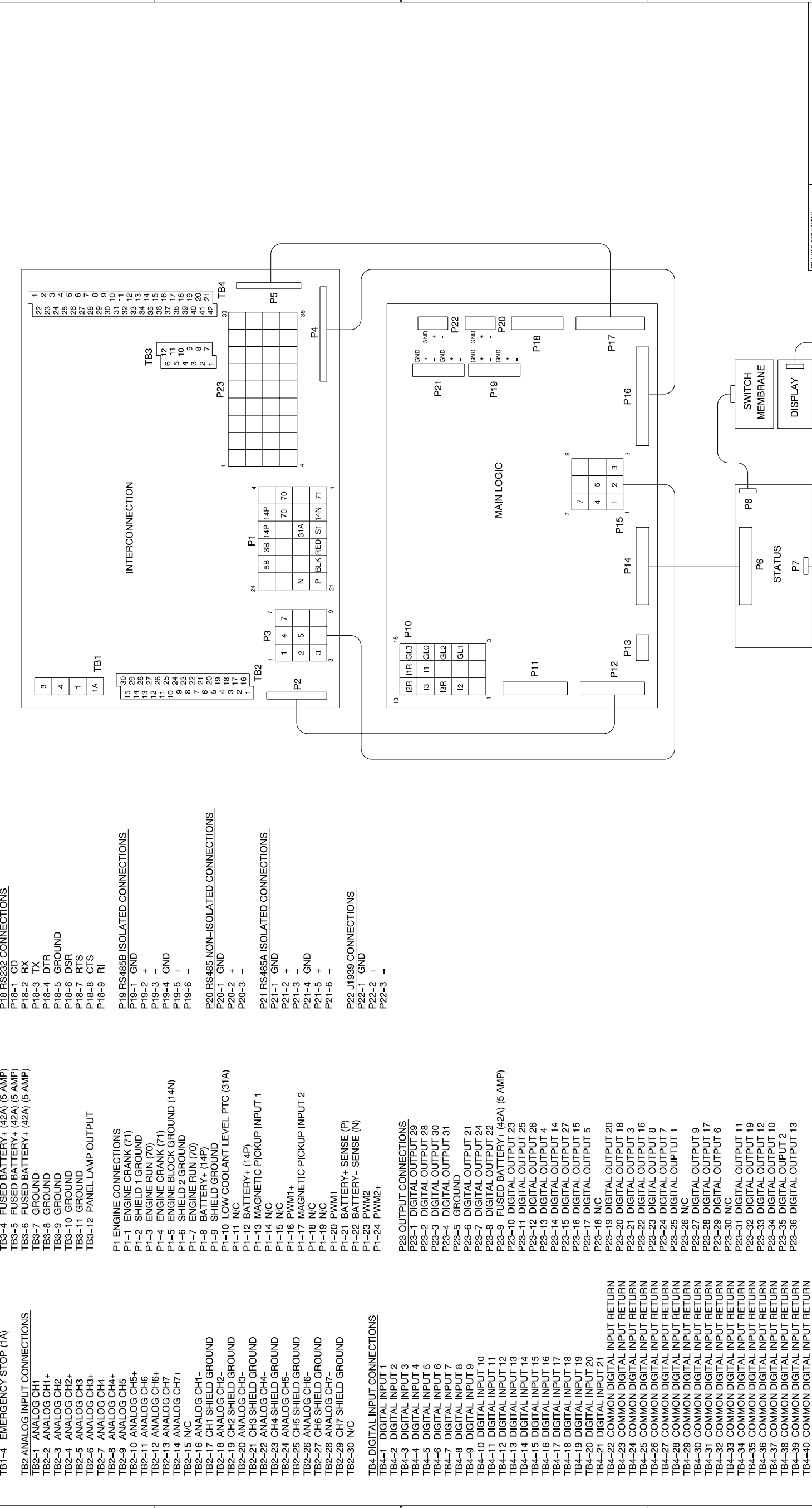
FIG.	DATE	REV.	REV. DATE
1	3-2-01	1	3-2-01
1	3-2-01	2	3-2-01

FIG.	DATE	REV.	REV. DATE
1	3-2-01	1	3-2-01
1	3-2-01	2	3-2-01

FIG.	DATE	REV.	REV. DATE
1	3-2-01	1	3-2-01
1	3-2-01	2	3-2-01

FIG.	DATE	REV.	REV. DATE
1	3-2-01	1	3-2-01
1	3-2-01	2	3-2-01

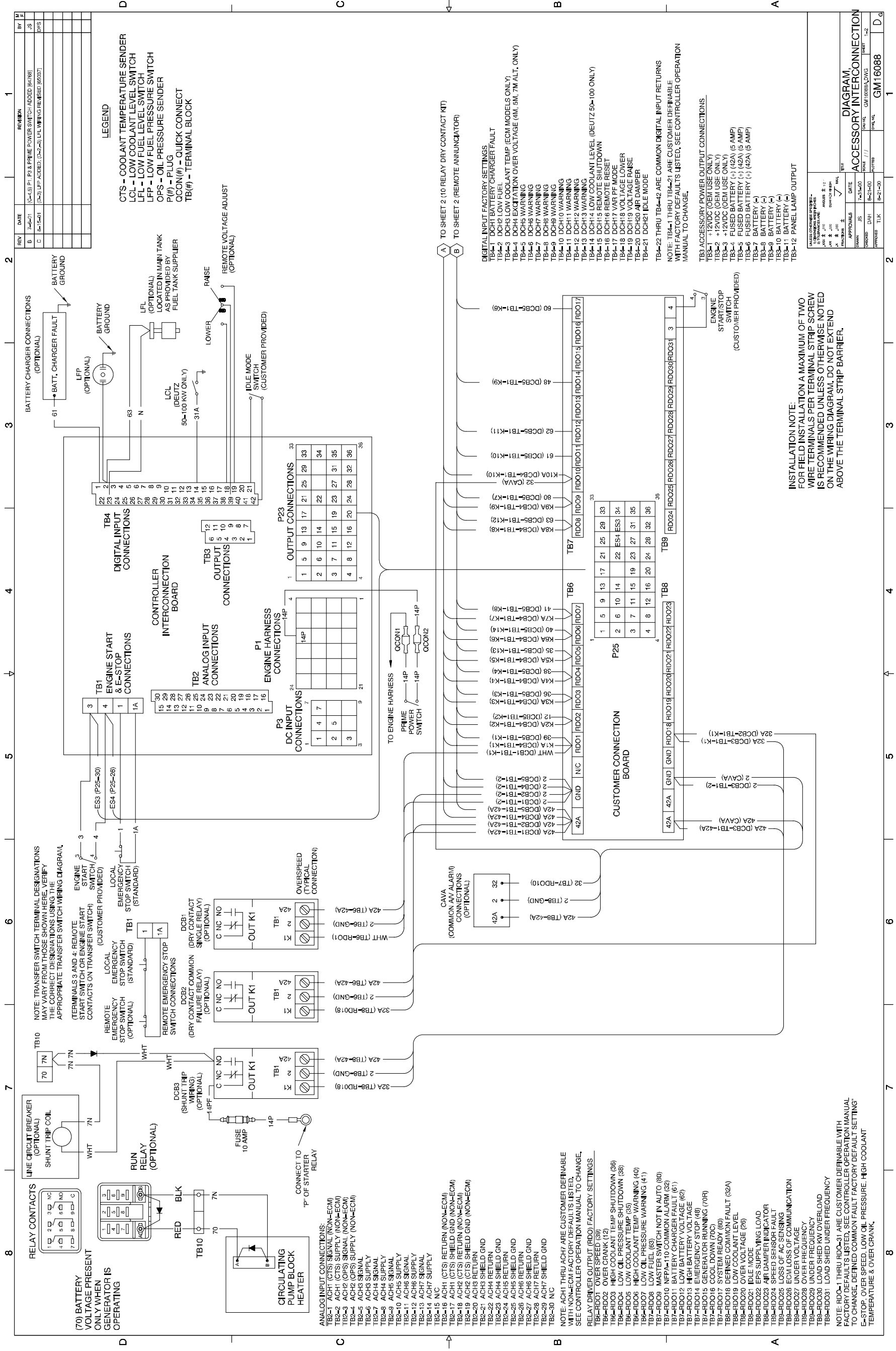
REV	DATE	DESCRIPTION	BY	CHK
-	11-2-01	NEW DRAWING (64182)	J.S.	
A	7-3-01	SEE SHEET 1 (64708)	J.S.	



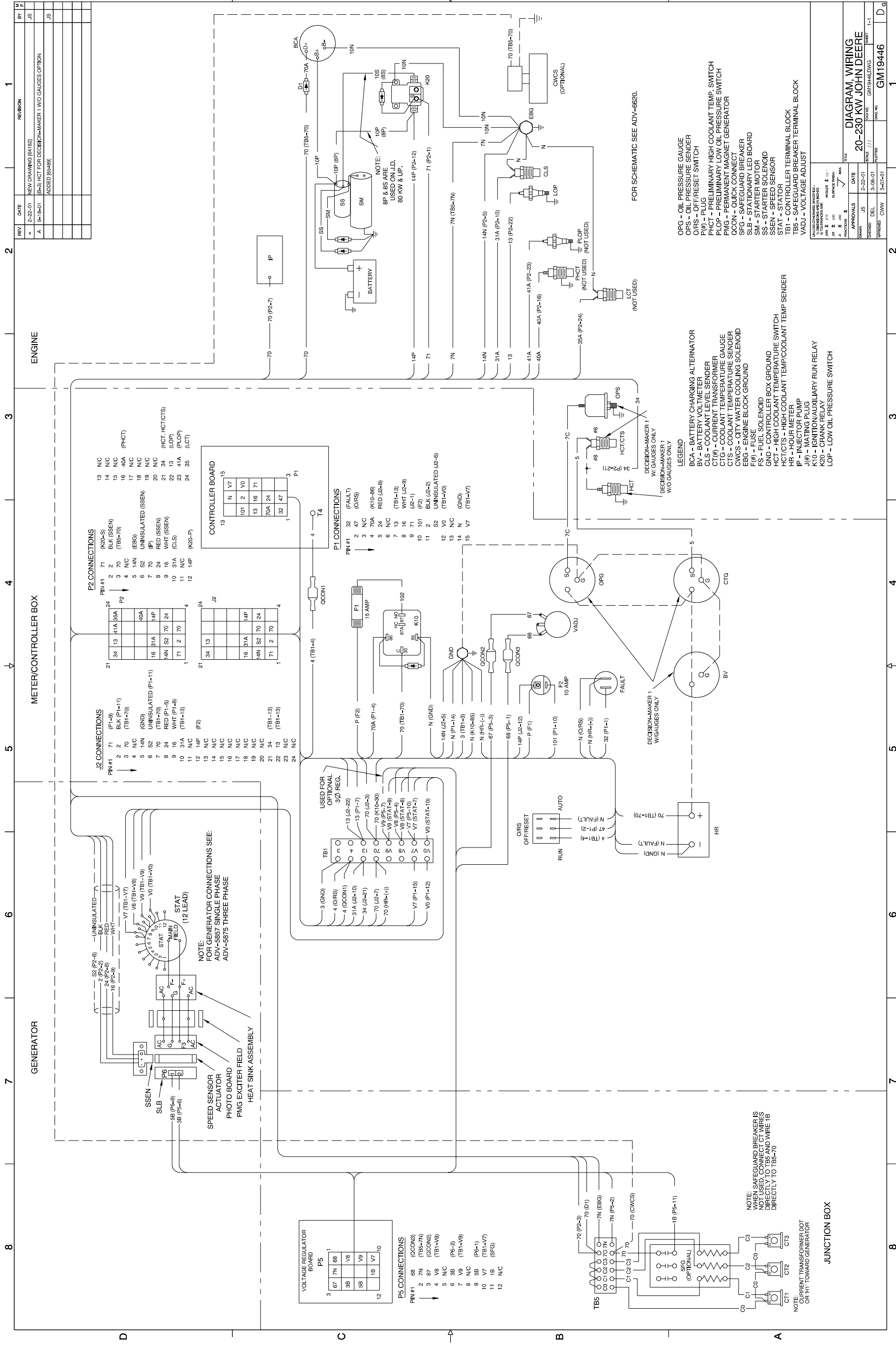
REVISION		DATE	DESCRIPTION	BY	CHK
1					
2					
3					
4					
5					
6					
7					
8					

APPROVALS		DATE	DESCRIPTION
DESIGNED	DEL	3-2-01	
DRAWN	J.S.	3-2-01	
CHECKED	DEL	3-2-01	
APPROVED	CHW	3-2-01	

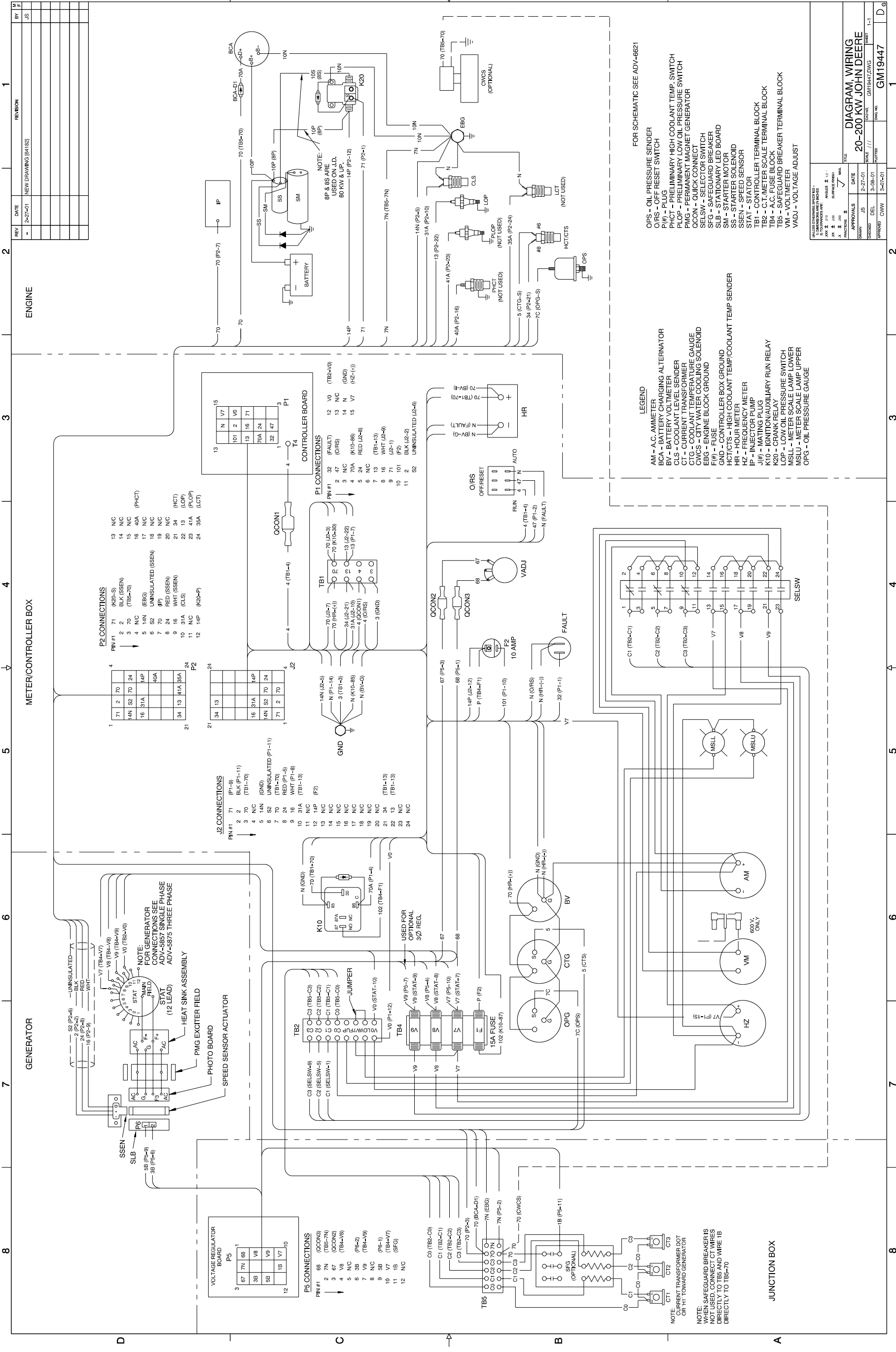
TITLE		SCALE	SHEET	TOTAL SHEETS
DIAGRAM, SCHEMATIC		1/1	2-2	2-2
JOHN DEERE 200 KW				
ADV-6625B.DWG				
ADV-6625				



Decision-Maker™ 550 Controller, Accessory Connections, Accessories, GM16088A-C



Decision-Maker™ 1, Standard and Standard w/Engine Gauges, Point-to-Point Wiring Diagram, GM19446-A

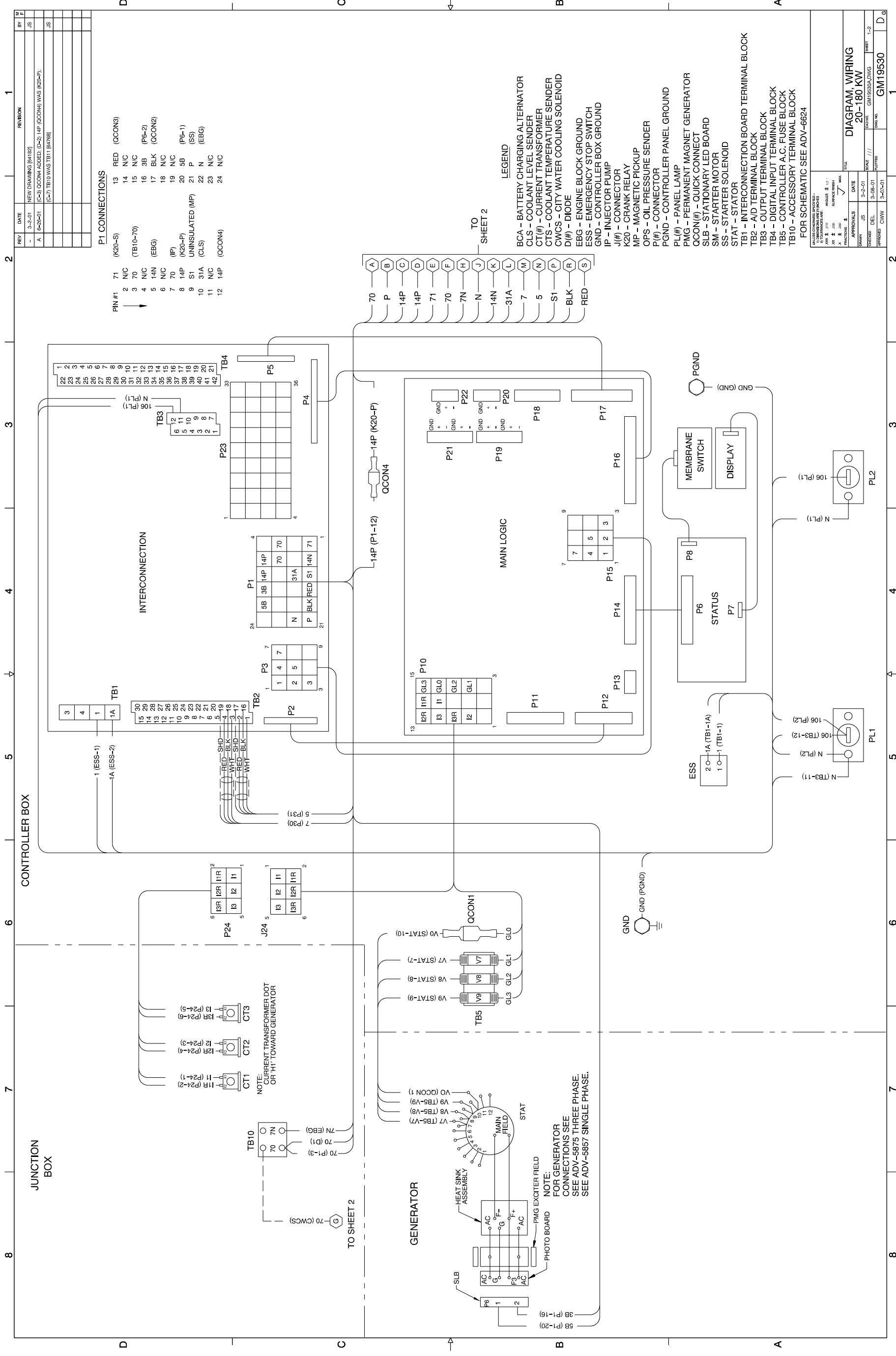


REV	DATE	REVISION	BY
-	2-27-01	NEW DRAWING (B411B2)	JLS

REV	DATE	REVISION	BY
-	2-27-01	NEW DRAWING (B411B2)	JLS

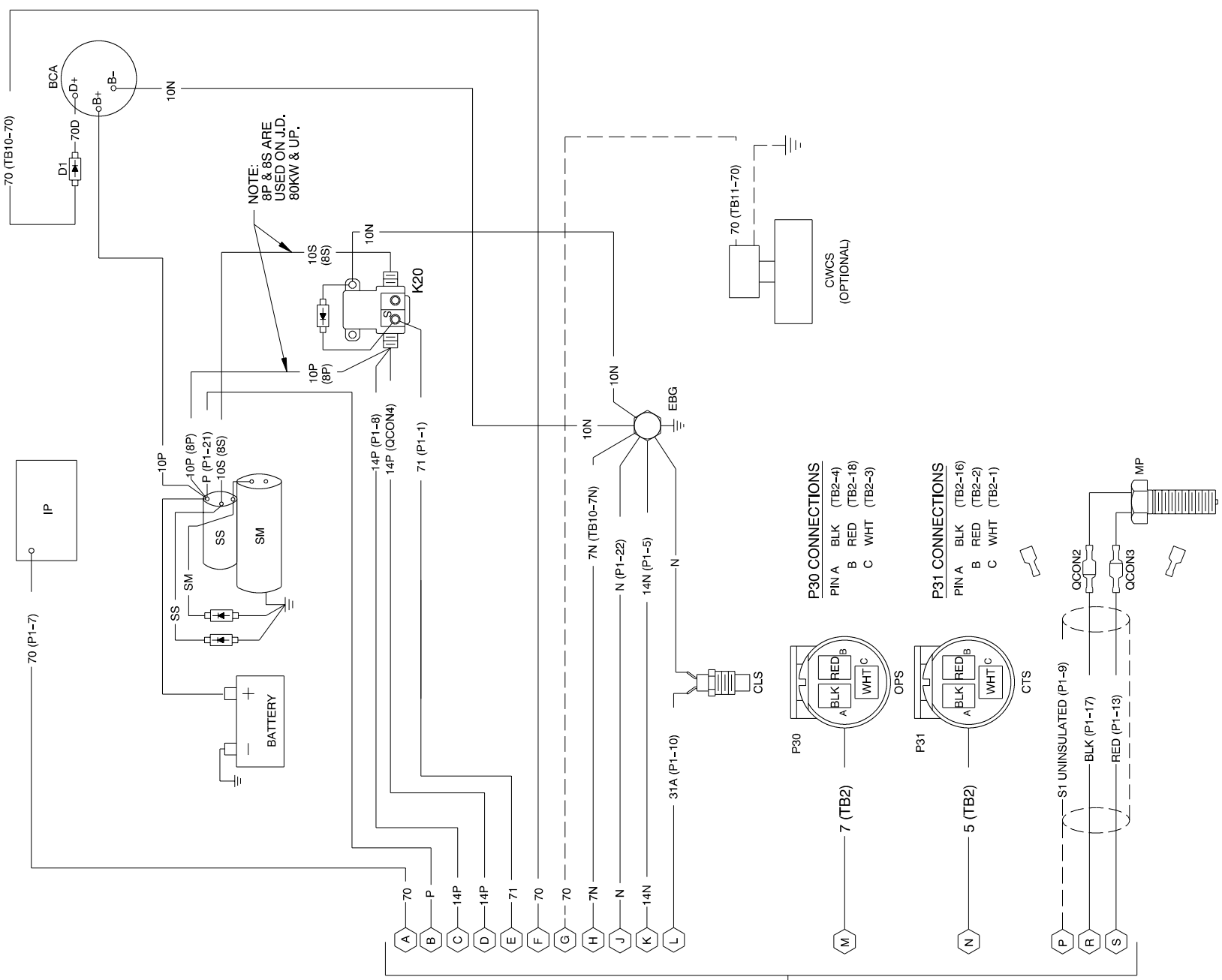
DATE	BY	APPROVALS	DATE	BY
2-27-01	JLS		2-27-01	JLS
3-08-01	JLS		3-08-01	JLS
3-07-01	JLS		3-07-01	JLS

DATE	BY	APPROVALS	DATE	BY
2-27-01	JLS		2-27-01	JLS
3-08-01	JLS		3-08-01	JLS
3-07-01	JLS		3-07-01	JLS



REV	DATE	REVISION	BY
-	3-2-01	NEW DRAWING (84182)	JS
A	9-26-01	(C-4) 14P (OCON4) WAS (P1-22) (A-5) CONNECTORS ADDED TO OCON2 & 3; (C-3) 70D WAS 70A (P178)	JS

ENGINE

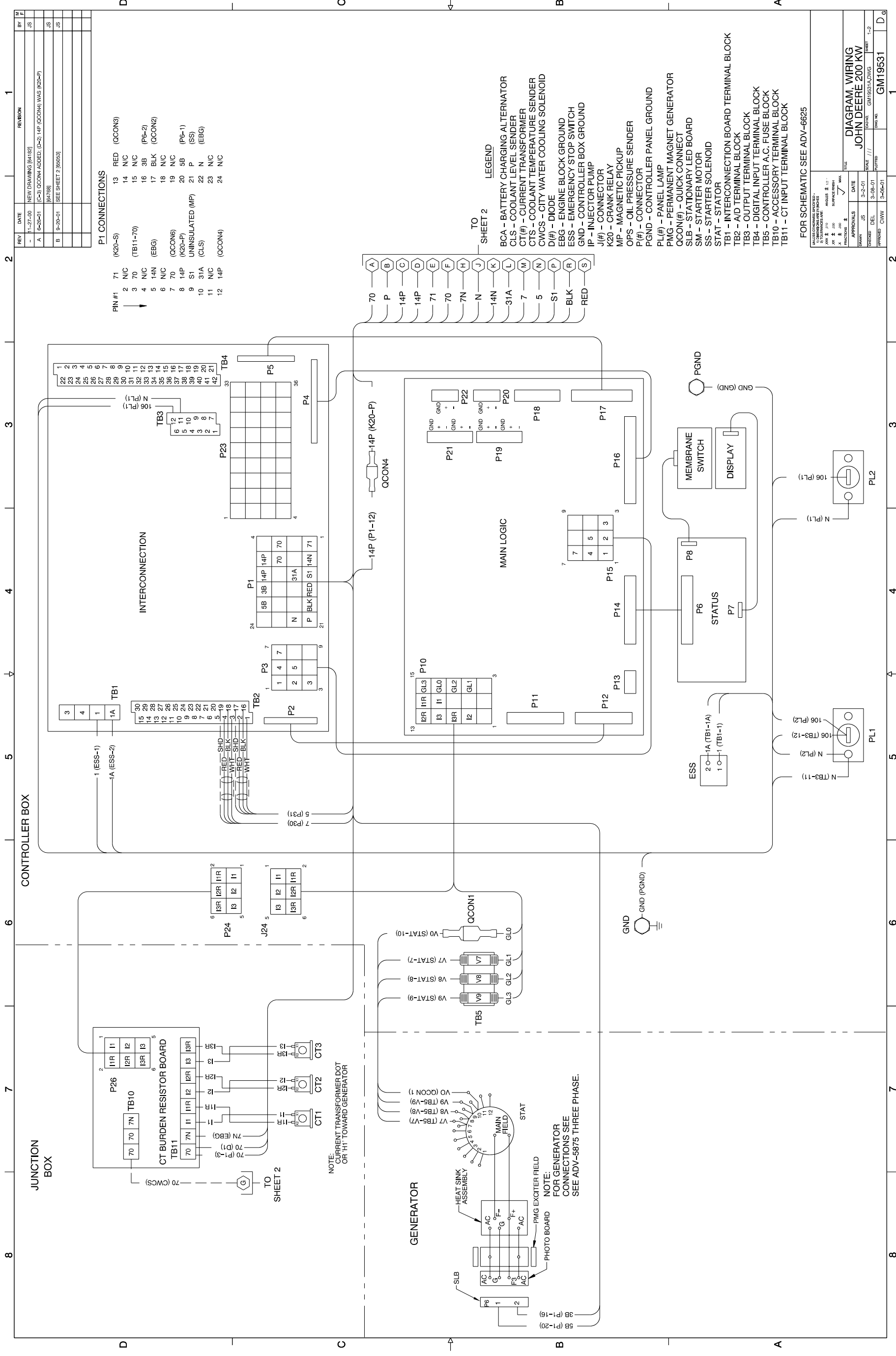


REV	DATE	REVISION	BY
-	3-2-01	NEW DRAWING (84182)	JS
A	9-26-01	(C-4) 14P (OCON4) WAS (P1-22) (A-5) CONNECTORS ADDED TO OCON2 & 3; (C-3) 70D WAS 70A (P178)	JS

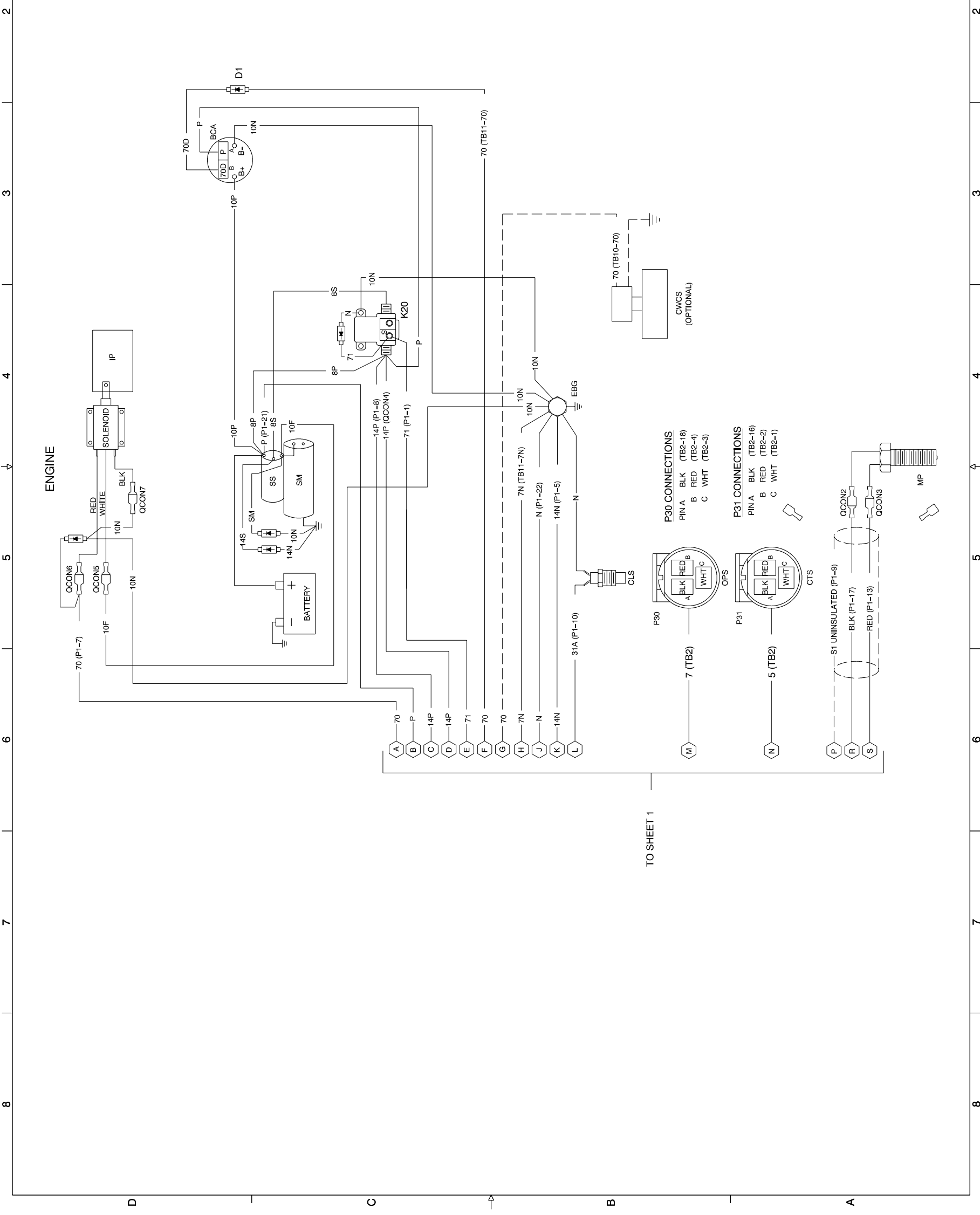
REV	DATE	REVISION	BY
-	3-2-01	NEW DRAWING (84182)	JS
A	9-26-01	(C-4) 14P (OCON4) WAS (P1-22) (A-5) CONNECTORS ADDED TO OCON2 & 3; (C-3) 70D WAS 70A (P178)	JS

REV	DATE	REVISION	BY
-	3-2-01	NEW DRAWING (84182)	JS
A	9-26-01	(C-4) 14P (OCON4) WAS (P1-22) (A-5) CONNECTORS ADDED TO OCON2 & 3; (C-3) 70D WAS 70A (P178)	JS

REV	DATE	REVISION	BY
-	3-2-01	NEW DRAWING (84182)	JS
A	9-26-01	(C-4) 14P (OCON4) WAS (P1-22) (A-5) CONNECTORS ADDED TO OCON2 & 3; (C-3) 70D WAS 70A (P178)	JS

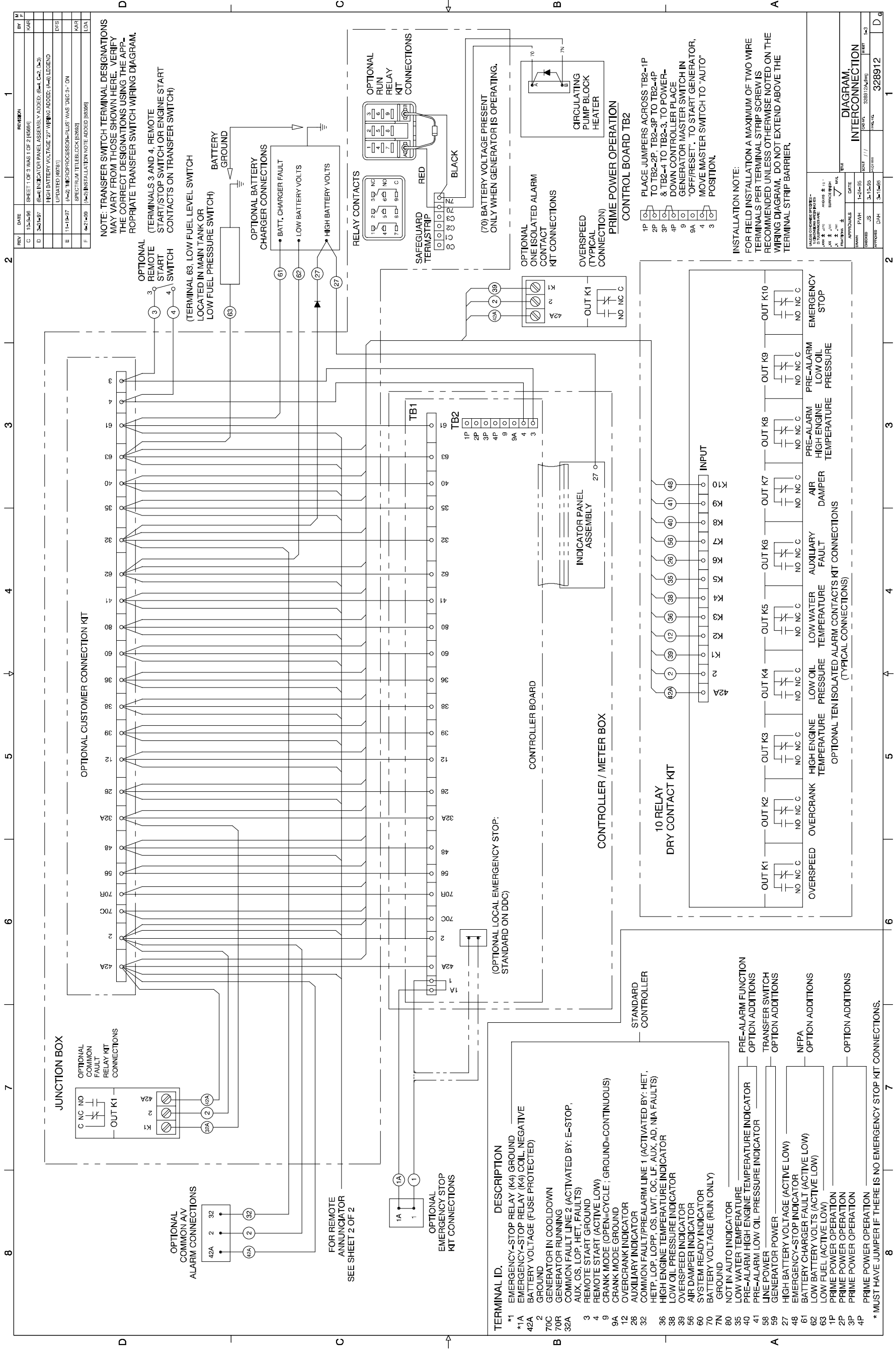


REV	DATE	REVISION	BY
-	3-2-01	NEW DRAWING (84182)	JS
A	9-26-01	(C-4) 14P (OCON4) WAS (P1-22). (B-4) 70D WAS 70A. (A-5) CONNECTORS ADDED TO OCON2 & 3 (P4P8)	JS
B	9-29-01	(B-5) BLK (TB2-18) WAS (TB2-4). (RED (TB2-4) WAS (TB2-18) (80083)	JS

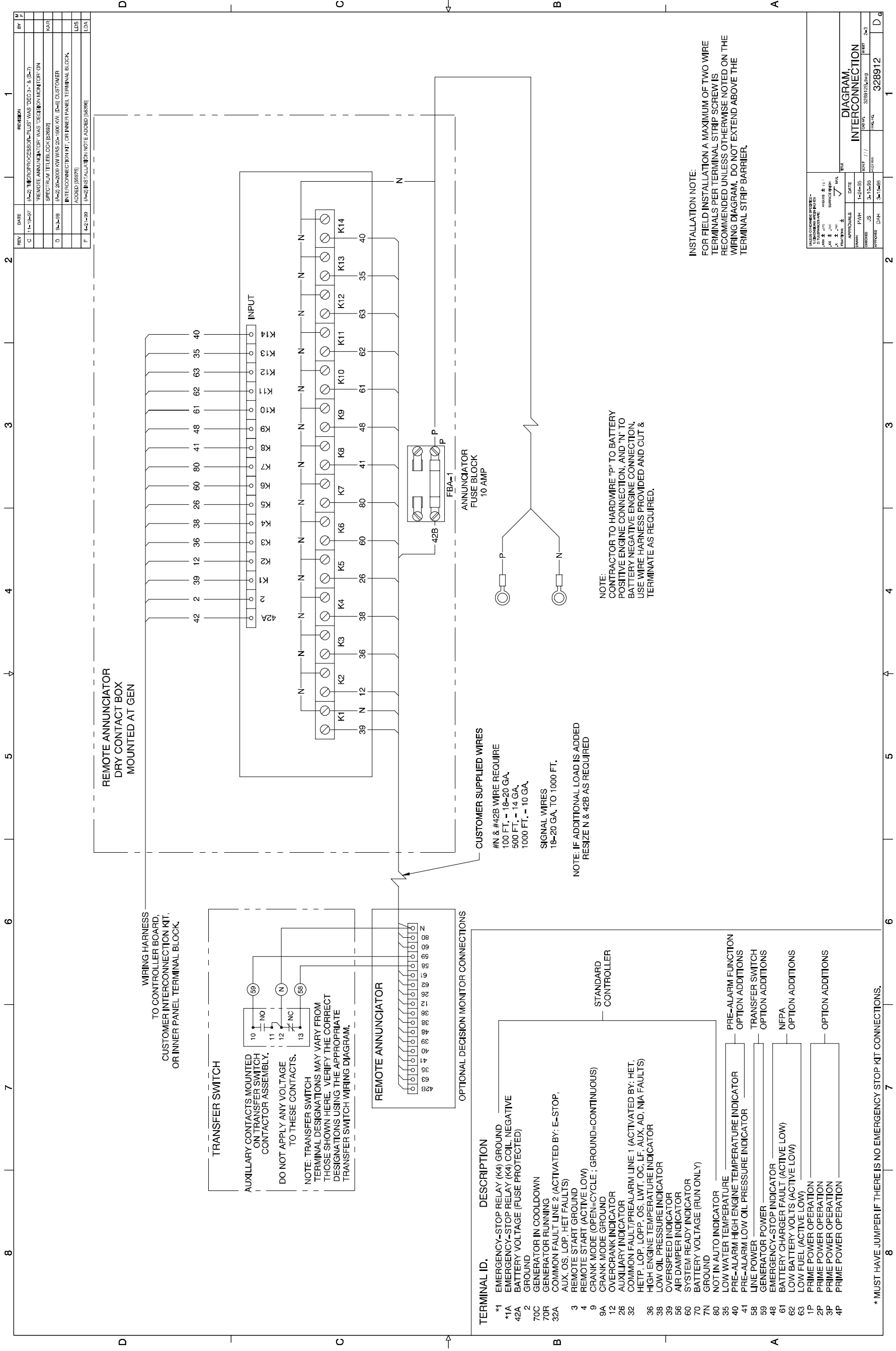


REV	DATE	REVISION	BY
-	3-2-01	NEW DRAWING (84182)	JS
A	9-26-01	(C-4) 14P (OCON4) WAS (P1-22). (B-4) 70D WAS 70A. (A-5) CONNECTORS ADDED TO OCON2 & 3 (P4P8)	JS
B	9-29-01	(B-5) BLK (TB2-18) WAS (TB2-4). (RED (TB2-4) WAS (TB2-18) (80083)	JS

REV	DATE	REVISION	BY
-	3-2-01	NEW DRAWING (84182)	JS
A	9-26-01	(C-4) 14P (OCON4) WAS (P1-22). (B-4) 70D WAS 70A. (A-5) CONNECTORS ADDED TO OCON2 & 3 (P4P8)	JS
B	9-29-01	(B-5) BLK (TB2-18) WAS (TB2-4). (RED (TB2-4) WAS (TB2-18) (80083)	JS



Decision-Maker™ 3+ Controller, Accessory Connections, 328912A-F



This page intentionally left blank.

KOHLER[®] POWER SYSTEMS

KOHLER CO. Kohler, Wisconsin 53044
Phone 920-565-3381, Web site www.kohlergenerators.com
Fax 920-459-1646 (U.S.A. Sales), Fax 920-459-1614 (International)
For the nearest sales and service outlet in U.S.A. and Canada
Phone 1-800-544-2444

Kohler Power Systems
Asia Pacific Headquarters
7 Jurong Pier Road
Singapore 619159
Phone (65)264-6422, Fax (65)264-6455

TP-6146 10/01

© 2001 by Kohler Co. All rights reserved.