

---

**INSTALLATION INSTRUCTIONS**


---

Original Issue Date: 7/95

Model: 350-1600 kW

Market: Industrial

Subject: **Generator Strip Heater Kits PA-272800, PA-272800-SD,  
PA-272801, PA-272801-SD, PA-279750, PA-279750-SD**



The generator strip heater kit heats the unit in cold climates and helps prevent condensation from forming in the generator. Observe the following safety precautions while installing the kit.



**Accidental starting.  
Can cause severe injury or death.**

Disconnect battery cables before working on generator set (negative lead first and reconnect it last).

**Accidental starting can cause severe injury or death.** Turn generator set master switch to OFF position, disconnect power to battery charger, and remove battery cables (remove negative lead first and reconnect it last) to disable generator set before working on any equipment connected to generator set. The generator set can be started by automatic transfer switch or remote start/stop switch unless these precautions are followed.

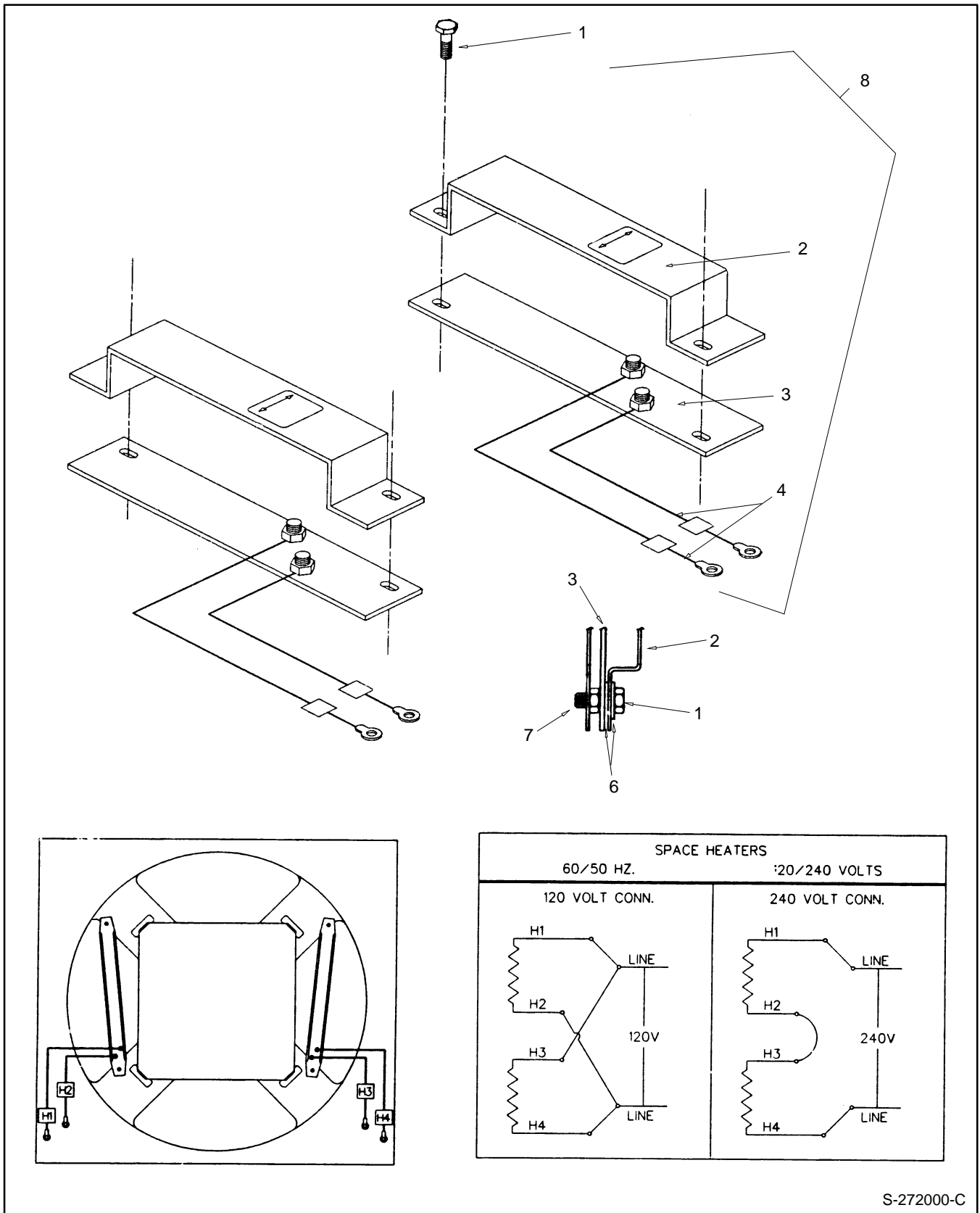
<b>⚠ WARNING</b>	
	
<b>Hazardous voltage.</b>	<b>Moving rotor.</b>
<b>Can cause severe injury or death.</b>	
Do not operate generator set without all guards and electrical enclosures in place.	

**Hazardous voltage can cause severe injury or death.** Whenever electricity is present, there is the hazard of electrocution. Open main circuit breaker on all power sources before servicing equipment. Electrically ground the generator set and electrical circuits when in use. Never come into contact with electrical leads or appliances when standing in water or on wet ground, as the chance of electrocution is increased under such conditions.

# Installation

1. Move the generator set master switch to the OFF position. Disconnect generator set engine starting battery, negative (-) lead first.
2. Remove junction box panels to expose end bracket and stator.
3. Connect lead assemblies to strip heaters as shown in Figure 1 for 350-800 kW models or Figure 2 for 900-1600 kW models.
4. Assemble strip heaters (272802 or 272803 or 279749) and guards, screws (X-465-7), washers (X-25-40), and elastic stop nuts as shown in Figure 1 for 350-800 kW models, and Figure 2 for 900-1600 kW models with four space heaters. Do not assemble jam nut (X-101-8) tight against heater strip. Heater strip needs room for expansion when operating.
5. Align strip heater and guard with the predrilled holes in the end bracket and secure with screws (X-465-7) provided. See Figure 1 or Figure 2. Tighten jam nut against end bracket. Verify that jam nuts are not tight against the heater strips.
6. Connect AC voltage source using wiring diagram in Figure 1 or Figure 2.
7. Replace junction box side panels.
8. Check that the generator master switch is in the OFF position and reconnect engine starting battery, negative (-) lead last.

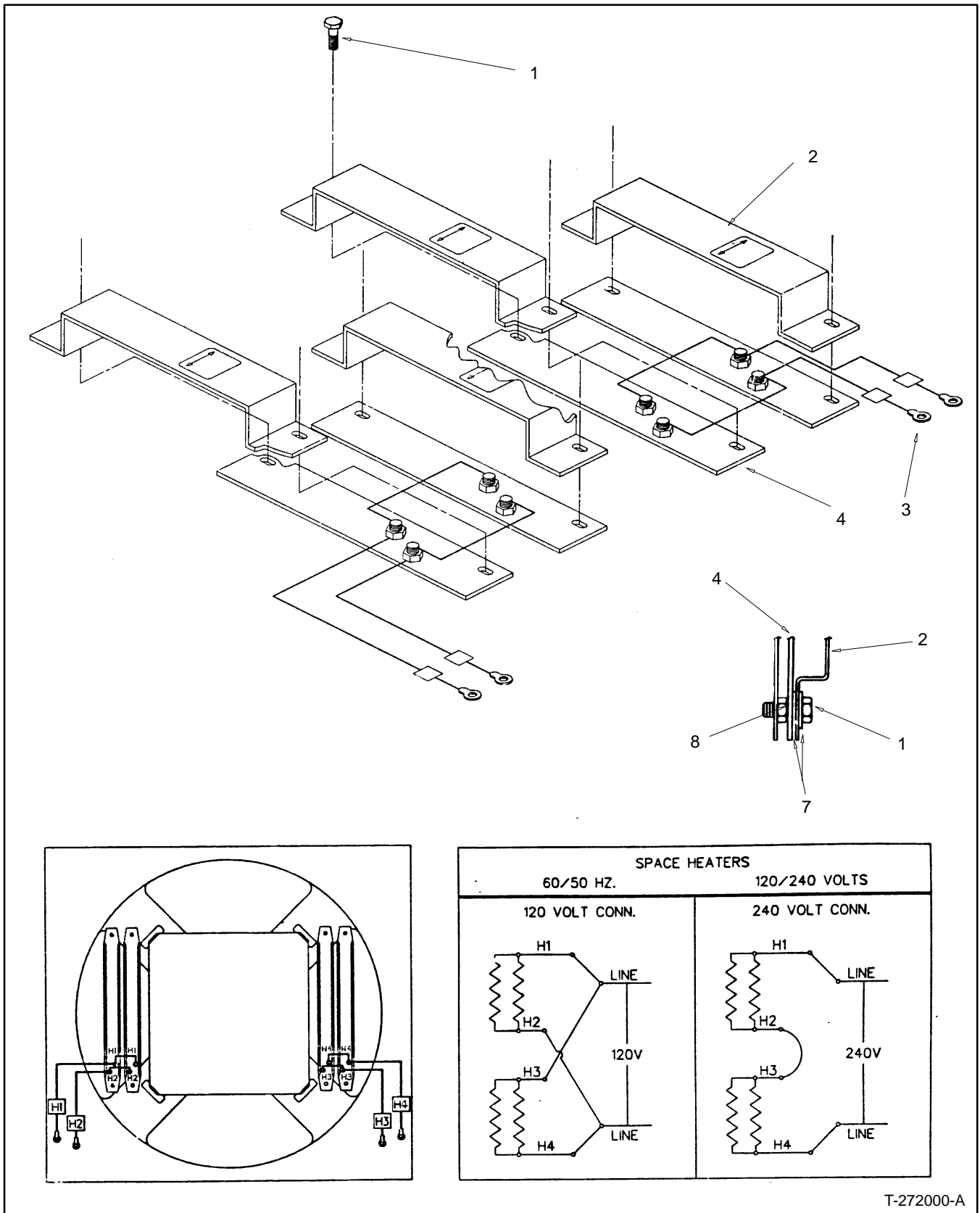
Parts List					
KITS: PA-272800, PA-272800-SD, PA-272801, PA-272801-SD, PA-279750, PA-279750-SD			Unique Parts		
Qty.	Description	Common Parts	PA-272800 PA-272800-SD	PA-272801 PA-272801-SD	PA-279750 PA-279750-SD
8	Washer, plain	X-25-8			
4	Nut, elastic stop 1/4-20	X-101-8			
4	Screw	X-465-7			
1	Heater Assembly, space		272803	272802	279749



- 1. Screw
- 2. Strip heater guard
- 3. Strip heater
- 4. Lead assembly

- 5. Screw (X-465-7)
- 6. Washers (X-25-53)
- 7. Nut (X-101-8)
- 8. Strip heater assembly (includes items 2,3,4)

**Figure 1. 350-800 kW Strip Heater Assembly**



**Figure 2. 900-1600 kW Strip Heater Assembly**