

---

## INSTALLATION INSTRUCTIONS

---

Original Issue Date: 4/96  
 Model: 6-15 kW  
 Market: Industrial  
 Subject: Inner Tank Leak Alarm Kit PA-226202

The inner tank leak alarm indicates the inner tank has leaked into the outer tank and the double-wall subbase fuel tank needs replacement.



**Accidental starting.**  
**Can cause severe injury or death.**

Disconnect battery cables before working on generator set (disconnect negative lead first and reconnect it last).

**Disabling generator set. Accidental starting can cause severe injury or death.** Turn generator set master switch to OFF position, disconnect power to battery charger, and remove battery cables (remove negative lead first and reconnect it last) to disable generator set before working on the generator set or connected equipment. The generator set can be started by an automatic transfer switch or remote start/stop switch unless these precautions are followed.



**Explosive fuel vapors.**  
**Can cause severe injury or death.**

Use extreme care when handling, storing, and using fuels.

**Fuel tanks. Explosive fuel vapors can cause severe injury or death.** Gasoline and other volatile fuels stored in day tanks or subbase fuel tanks can cause an explosion. Store only diesel fuel in tanks.

## Installation

1. Place the generator set master switch in the OFF position.
2. Disconnect generator set engine starting battery, negative (-) lead first.
3. Attach leak alarm bracket (336505) to annunciator box assembly (A-224861).
4. Mount annunciator box assembly to junction box. See Figure 1 for mounting location.
5. Remove pipe plug from tank for leak alarm sensor. See Figure 1 for pipe plug location. Apply pipe sealant to threads of leak alarm (A-226201) and install in tank.
6. Connect leak alarm wiring harness (226206) to annunciator box assembly and leak alarm sensor. See Figure 1.
7. Connect wire harness power leads to either battery or starter. See Leak Alarm Battery Connections Figure 1.
8. Check that the generator set master switch is in the OFF position.
9. Reconnect the generator set engine starting battery, negative (-) lead last.

Use the following table to identify leak alarm conditions.  
See Figure 1 Leak Alarm Panel view.

Alarm Switch Position	Float Switch Position	Observation
Silence	Open	Alarm horn sounds to alert user that the toggle switch is in the silence position and that the alarm will not sound if the float switch closes.
Normal	Open	Neither the horn nor light indicates failure.
Normal	Closed	Horn and light activate to indicate failure. If the switch is moved to the silence position the light stays on until the fault is cleared.

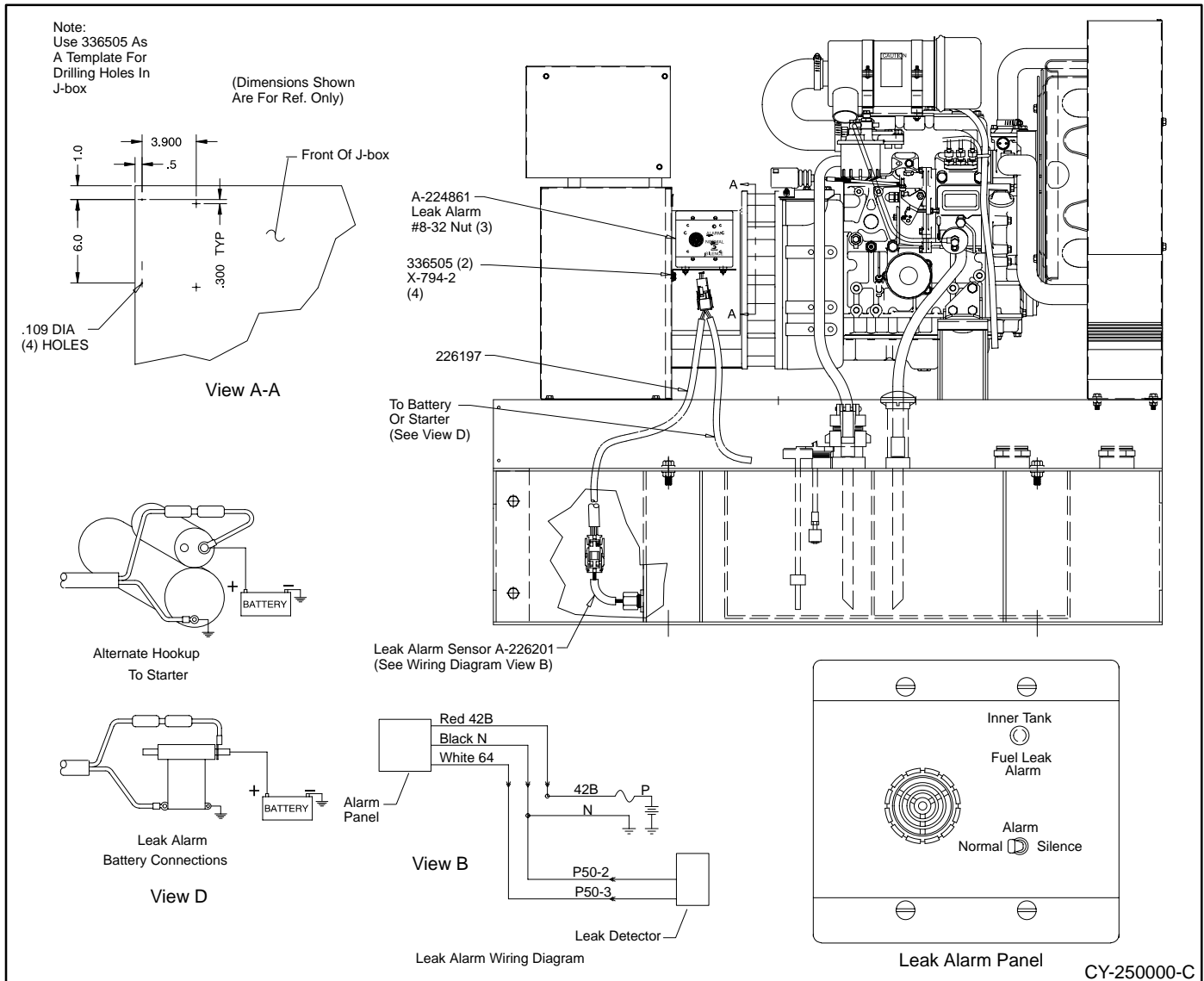


Figure 1. 6-15 kW Double-Wall Subbase Fuel Tank Leak Alarm Installation

Inner Tank Leak Alarm

Parts List		
Kit: PA-226202		
Qty.	Description	Part Number
2	Screw, drill	X-794-2
1	Box, annunciator	A-224861
1	Sensor, leak alarm	A-226201
1	Harness, leak alarm wiring	226206
1	Bracket, leak alarm	336505