



Exhaust Mounting Kits 60/70RZ Fast-Response II

Exhaust Mounting Kit No.	Type	Silencer No.	Type
PA-255306	Critical	PA-253305	Critical
PA-255304	Industrial	PA-253143	Industrial

The silencer and exhaust mounting kit are intended for installation on a housed generator set. Exhaust mounting kits do not include silencers.

There is an exhaust mounting kit for critical-type silencers and one for industrial-type silencers. See Figure 1 and parts listing for identification and location of parts.

WARNING

UNIT STARTS WITHOUT NOTICE! Units with Automatic Transfer Switches start automatically. Potential injury or electrocution can result. Turn Generator Master Switch on controller to OFF position and remove battery cables (remove negative lead first and reconnect it last) to disable generator set before working on any equipment connected to generator.

WARNING

HOT PIPING! An engine gets hot while running, and exhaust system components get extremely hot. Do not work on generator set until unit is allowed to cool.

MOUNTING CRITICAL-TYPE SILENCER

1. Place controller master switch to OFF position. Disconnect battery of generator set, negative lead first.
2. Remove housing doors to expose generator set.
3. Thread the exhaust pipe onto the silencer inlet and tighten with a pipe wrench. Be sure to coat the silencer inlet threads with a high-temperature pipe joint compound.
4. Align silencer inlet over engine exhaust manifold; do not secure. Place silencer bracket underneath silencer and position as shown in Figure 1. With silencer parallel to housing edge, mark position of silencer bracket on housing. Remove silencer.
5. Using silencer bracket as a template, drill two .281-in. (7.14-mm) diameter holes in housing roof. Locate holes at each end of silencer bracket.
6. Install rubber mounts to housing roof with two lock washers and hex. nuts.
7. Mount silencer bracket to rubber mounts with two screws and lock washers.

8. Install silencer onto engine exhaust manifold and install clamp, do not tighten.

NOTE

Exhaust pipe must overlap the engine exhaust manifold a minimum of 2 in. (51 mm).

9. Position silencer over silencer bracket. Thread hex. nuts on studs about 1 in. (25 mm). Place silencer strap over silencer and attach studs. With studs through silencer bracket, install and alternately tighten lock nuts. Tighten hex. nuts on studs against silencer bracket.
10. Final tighten clamp on exhaust tube.
11. Check that controller master switch is in the OFF position. Reconnect battery, negative lead last. Replace doors.

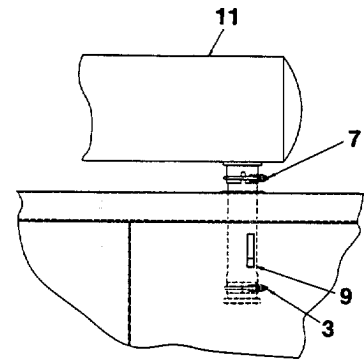
MOUNTING INDUSTRIAL-TYPE SILENCER

1. Place controller master switch to OFF position. Disconnect battery of generator set, negative lead first.
2. Remove housing doors to expose generator set.
3. Attach exhaust pipe to engine exhaust manifold, and install the 2½ in. clamp. Do not final tighten.

NOTE

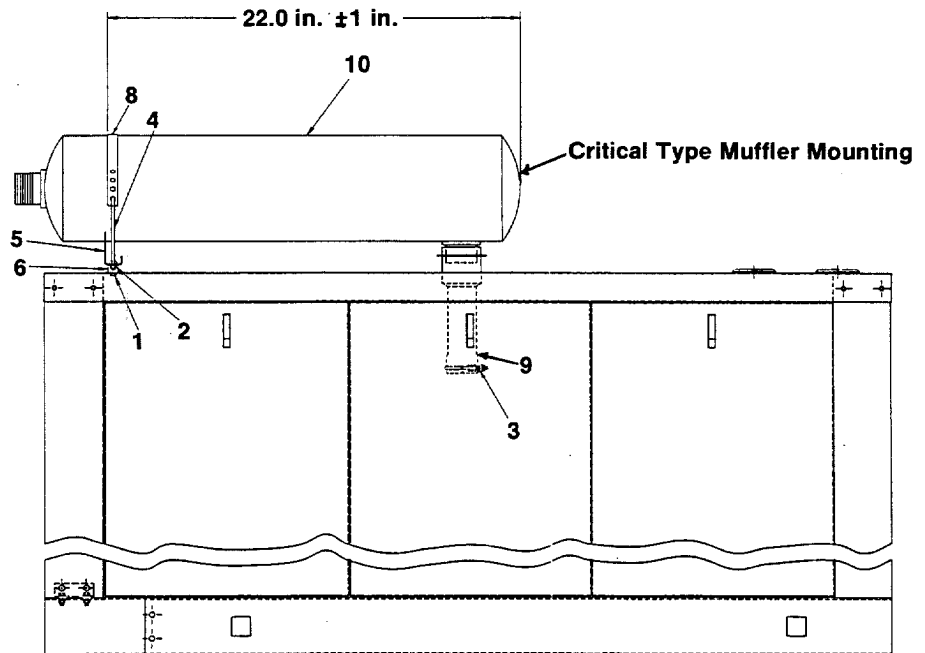
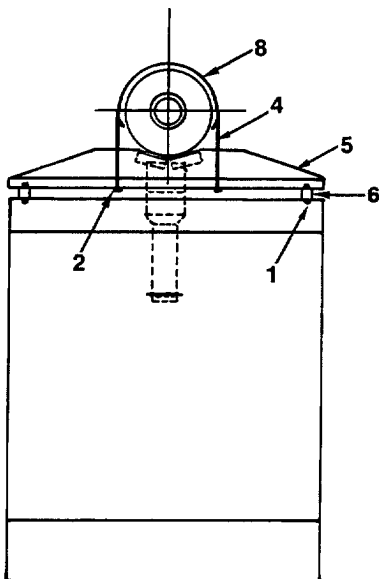
Exhaust pipe must overlap the engine exhaust manifold a minimum of 2 in. (51 mm).

4. Align silencer inlet over exhaust pipe, do not secure. Place silencer bracket underneath silencer and position as shown in Figure 1. With silencer parallel to housing edge, mark position of silencer bracket on housing. Remove silencer.
5. Using silencer bracket as a template, drill two .281-in. (7.1-mm) diameter holes in housing roof. Locate holes at each end of silencer bracket.
6. Install rubber mounts to housing roof with two lock washers and hex. nuts.
7. Mount silencer bracket to rubber mounts with two screws and lock washers.
8. Install silencer inlet onto exhaust pipe and install 3-in. clamp; do not tighten.
9. Position silencer over silencer bracket. Thread hex.



Industrial Type Muffler Mounting

NOTE
1 inch equals 25.4 mm



Critical Type Muffler Mounting

Figure 1. Silencer Mounting

nuts on studs about 1 in. (25mm). Place silencer strap over silencer and attach studs. With studs through silencer bracket, install and alternately tighten lock nuts. Tighten hex. nuts on studs against silencer bracket.

11. Final tighten silencer inlet to exhaust pipe clamp.
12. Check that controller master switch is in the OFF position. Reconnect battery, negative lead last. Replace doors.

10. Final tighten exhaust pipe to engine exhaust manifold clamp.

PARTS LISTING

Ref. No.	Description	Qty.	Kits			
			PA-255306	PA-255304	PA-253305	PA-253143
1	Screw, 1/4-20x3/8"	2	X-5-17	X-5-17		
	Washer, 1/4" Lock	4	X-20-1	X-20-1		
	Nut, 1/4-20 Hex.	2	X-81-1	X-81-1		
2	Nut, 1/4-20 Hex.	2	X-81-1	X-81-1		
	Nut, 1/4-20 Lock	2	X-101-8	X-101-8		
3	Clamp, 2 1/2"	1	X-722-2	X-722-2		
4	Stud	2	253307	253307		
5	Bracket, Silencer	1	255559	255559		
6	Mount, Rubber	2	259632	259632		
7	Clamp, 3"	1		286283		
8	Strap, Silencer	1	290865	290864		
9	Pipe, Exhaust	1	255307	255305		
10	Silencer, Critical	1			253236	
11	Silencer, Industrial	1				253237

NOTE

Early production models used a different silencer bracket (253310) and a flexible exhaust hose in place of the supplied exhaust pipe. If replacement becomes necessary on these units, flexible exhaust hose X-797-19 (2.38 in. I.D. [engine end] X 3.00 in. O.D. [muffler end] X 28.0 in. length) must be used with the original bracket.