

Remote Speed Potentiometer Kit PA- -273768 For Installation on 20- -1600kW Generators

This kit allows remote adjustment of engine speed on 20- -1600kW generator sets. Adjustable range is approximately +/- 5% at 1800 RPM.

Parts Listing

Qty	Part Number	Part Description
2	X- -18- -4	Washer, Lock #4
2	X- -49- -40	Screw, Pan Head
1	X- -6133- -28	Nameplate
2	X- -74- -6	Nut, Hex.
1	273767	Potentiometer

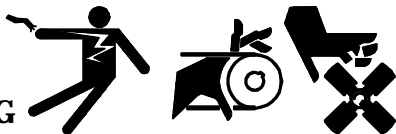
CAUTION

Short circuits can cause bodily injury and/or equipment damage. Do not contact electrical connections with tools or jewelry while adjustments are made. Remove wristwatch, rings, and jewelry that can cause short circuits.



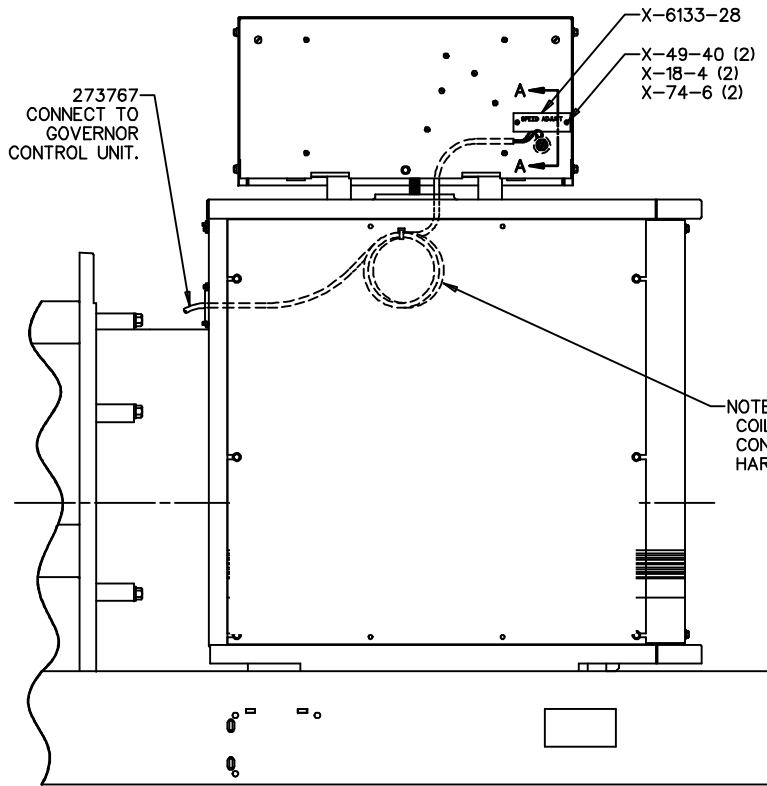
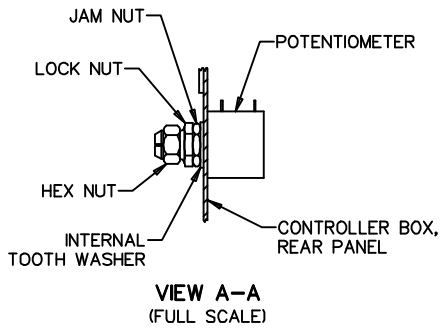
WARNING

Accidental starting can cause death or serious personal injury. Turn Generator Master Switch to OFF position, disconnect power to battery charger, and remove battery cables (remove negative lead first and reconnect it last) to disable generator set before working on any equipment connected to generator. The generator set can be started by automatic transfer switch or remote start/stop switch unless these precautions are followed.



Installation

1. Turn master switch to OFF position, disconnect power to battery charger, and disconnect battery cables (negative lead first).
2. Using hardware attached to the potentiometer, assemble potentiometer (273767) to controller rear panel. Run cable through the pre- -drilled hole. See Figure 1.
3. Run the cable along the back side and through the bottom of the controller box. Coil excess cable (leaving enough to reach to governor control unit) and connect to the engine harness with cable tie (X- -468- -1). See Figure 1.
4. Connect potentiometer cable to governor control unit as follows: (Refer to Figure 1)
 - Red lead connects to terminal #6,
 - Black lead connects to terminal #7,
 - White lead connects to terminal #9, and
 - Shielded lead connects to terminal #10.
5. Attach speed adjusting nameplate (X- -6133- -28) to rear panel of controller box using pan head screws (X- -49- -40), lock washers (X- -18- -4), and hex. nuts (X- -74- -6). See Figure 1.
6. Reconnect battery cables (negative lead last) and battery charger. Move generator master switch to ON position. Start generator set and check engine speed. Adjust engine speed (if necessary) with remote speed potentiometer to test speed potentiometer operation.



GOVERNOR CONTROL UNIT

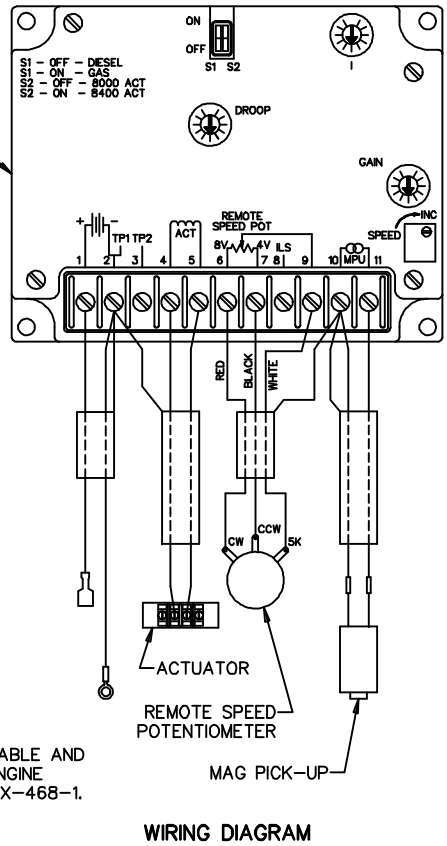


Figure 1. Remote Speed Potentiometer Installation.