
INSTALLATION INSTRUCTIONS

Original Issue Date: **10/06**
 Model: **450/500REOZVB**
 Market: **Industrial**
 Subject: **Fuel Hose Service Kit GM51304 (V3)**

Introduction

This fuel system service kit is intended to eliminate the loss of fuel prime on the above generator set models.

Inspect and replace the fuel system hoses as needed. Submit a standard warranty claim referencing this instruction and warranty labor code 5340. A flat rate of 2.5 hours has been established to perform this procedure. A claim can only be filed during the generator set warranty period.

Retain all removed parts for a minimum of 90 days after filling the warranty claim. Do not return parts to the manufacturer unless requested to do so.

Read the entire installation procedure and compare the kit parts with the parts list in this publication before beginning installation. Perform steps in the order shown.

Tools and Supplies Required

It is recommended to have an additional fuel filter and water separator on hand in case they are damaged during removal, become contaminated with dirt during the installation procedure, or leakage occurs after installation.

- Metric wrenches and socket sets up to 22 mm
- Strap wrench for fuel filter and water separator
- Crowfoot open end wrench, 22 mm (optional)
- Fuel filter (optional)
- Water separator (optional)

Safety Precautions

Observe the following safety precautions while installing the kit.

⚠ WARNING



Accidental starting. Can cause severe injury or death.

Disconnect the battery cables before working on the generator set. Remove the negative (-) lead first when disconnecting the battery. Reconnect the negative (-) lead last when reconnecting the battery.

Disabling the generator set. Accidental starting can cause severe injury or death. Before working on the generator set or connected equipment, disable the generator set as follows: (1) Move the generator set master switch to the OFF position. (2) Disconnect the power to the battery charger. (3) Remove the battery cables, negative (-) lead first. Reconnect the negative (-) lead last when reconnecting the battery. Follow these precautions to prevent starting of the generator set by an automatic transfer switch, remote start/stop switch, or engine start command from a remote computer.

| |
|---|
| ⚠ WARNING |
|  |
| <p>Fire. Can cause severe injury or death.</p> <p>Do not smoke or permit flames or sparks near fuels or the fuel system.</p> |



Servicing the fuel system. A flash fire can cause severe injury or death. Do not smoke or permit flames or sparks near the fuel injection system, fuel line, fuel filter, fuel pump, or other potential sources of spilled fuels or fuel vapors. Catch fuels in an approved container when removing the fuel line or fuel system.

Leaking or accumulated engine fluids. A fire can cause severe injury or death. Clean up engine fluids including fuel, oil, grease, and coolant. Determine the source of engine leaks and correct before starting the generator set. Keep the generator set area clean and remove combustible materials.



Explosive fuel vapors. Can cause severe injury or death.

Use extreme care when handling, storing, and using fuels.

| |
|---|
| ⚠ WARNING |
| |
| <p>Avoid high pressure fluids. Can cause severe injury or death.</p> <p>Do not work on high pressure fuel or hydraulic systems without protective gloves. Avoid the hazard by relieving pressure before disconnecting fuel injection pressure lines. Search for leaks using a piece of cardboard. Always protect hands and body from high pressure fluids. If an accident occurs, seek medical attention immediately. Any fluid injected in the skin tissues must be surgically removed within a few hours or gangrene may result.</p> |

Draining the fuel system. Explosive fuel vapors can cause severe injury or death. Spilled fuel can cause an explosion. Use a container to catch fuel when draining the fuel system. Wipe up spilled fuel after draining the system.

| |
|--|
| ⚠ WARNING |
| |
| <p>Hot engine and exhaust system. Can cause severe injury or death.</p> <p>Do not work on the generator set until it cools.</p> |

Servicing the exhaust system. Hot parts can cause severe injury or death. Do not touch hot engine parts. The engine and exhaust system components become extremely hot during operation.

| |
|--|
| ⚠ WARNING |
| |
| <p>Rotating parts. Can cause severe injury or death.</p> <p>Operate the generator set only when all guards, screens, and covers are in place.</p> |

| |
|--|
| ⚠ WARNING |
| |
| <p>Airborne particles. Can cause severe injury or blindness.</p> <p>Wear protective goggles and clothing when using power tools, hand tools, or compressed air.</p> |

1 Installation Procedure

1.1 Remove the generator set from service.

- 1.1.1 Place the generator set master switch in the OFF/RESET position.
- 1.1.2 Disconnect the power to the battery charger, if equipped.
- 1.1.3 Disconnect the generator set engine starting battery(ies), negative (-) lead first.
- 1.1.4 Close the fuel inlet and fuel return line valves. To minimize fuel leakage, close the user-supplied valves nearest to the engine, if installed.
- 1.1.5 Using a container to catch the fuel, remove the fuel tank supply and fuel return lines on the generator set.

1.2 Determine which fuel system version is currently installed on the generator set.

- 1.2.1 Disconnect the water sensor electrical connector at the bottom of the water separator. Leave the sensor connected to the water separator if it will be reused. Move the engine wiring harness away from the filter head area.
- 1.2.2 Disconnect the electrical sensor at the top of the fuel filter.

Note: If the new filter head is not equipped with a sensor, remove the sensor from the old filter head, apply pipe sealant to the threads, and install in the new filter head.
- 1.2.3 Remove the wing nut and bracket from the filters. The filter head has a rubber strip as part of the clamping system on the fuel filter. These components will be reused.
- 1.2.4 Place a container under the filter head area to catch leaking fuel.
- 1.2.5 Remove the fuel filter and water separator. Temporarily store the filters in a closed container or plastic bag, or place clean rags on them to prevent dirt/dust contamination.
- 1.2.6 Compare the generator set fuel system with Figure 1 and Figure 2.
- 1.2.7 If the generator set fuel system is more similar with Figure 1, go to step 1.3. If the generator set fuel system is more similar with Figure 2, go to step 1.4.

Note: The steps and components in the removal procedure are typical of most units. Some variation between engine models may require a slightly different removal procedure.

1.3 Remove the existing fuel system components from version 1.

Use the following steps to remove the existing fuel system components and refer to Figure 1.

- 1.3.1 Disconnect the fuel line between the fuel pump and the water separator. Remove the fitting from the filter head and install the fitting in the new filter head 3848679 (Figure 3, item 3) using gasket 20869259 (Figure 3, item 14). The banjo screw and two gaskets removed from the fuel pump location will not be reused.

Note: The kit contains twelve gaskets 20852764 and two gaskets 20869259. These components are similar in size. Identify the two gaskets 20869259, as the rubber sealing material is triangular, to prevent misuse.

- 1.3.2 Disconnect the fuel line between the fuel pump and the fuel filter. The two banjo screws and four washers will not be reused.
- 1.3.3 Disconnect the fuel line between the cylinder head rear location and the filter head. Remove the hose clamp and screw. All parts removed in this step will not be reused.
- 1.3.4 Disconnect the fuel supply banjo screw/fitting from the engine cooling loop. The two gaskets will not be reused.
- 1.3.5 Disconnect the fuel line between the water separator and the engine cooling loop. The two banjo screws and four washers will not be reused.
- 1.3.6 Disconnect the fuel lines at the cylinder head front location. Remove the fitting screw, overflow valve, and gaskets. Remove the hose clamp and screw. Remove the fuel line from the fuel filter. Remove the banjo screw and gaskets from the fuel return line at the fuel filter. All parts removed in this step will not be reused.
- 1.3.7 Remove the large nut holding the fuel return line fitting at the fuel filter. The fuel line and fitting will not be reused. Save the the large nut for installation later.

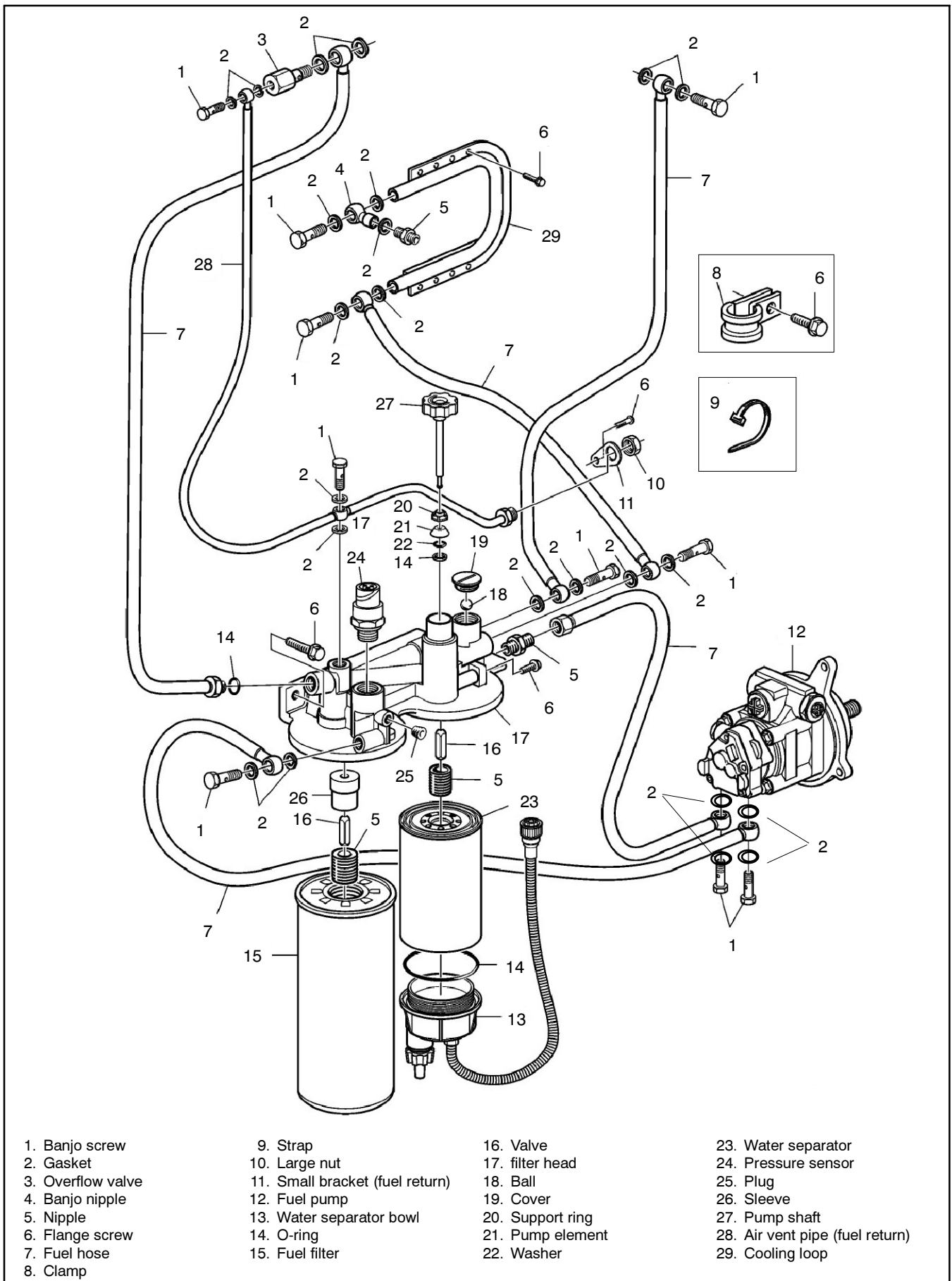


Figure 1 Existing Fuel System Components, Version 1

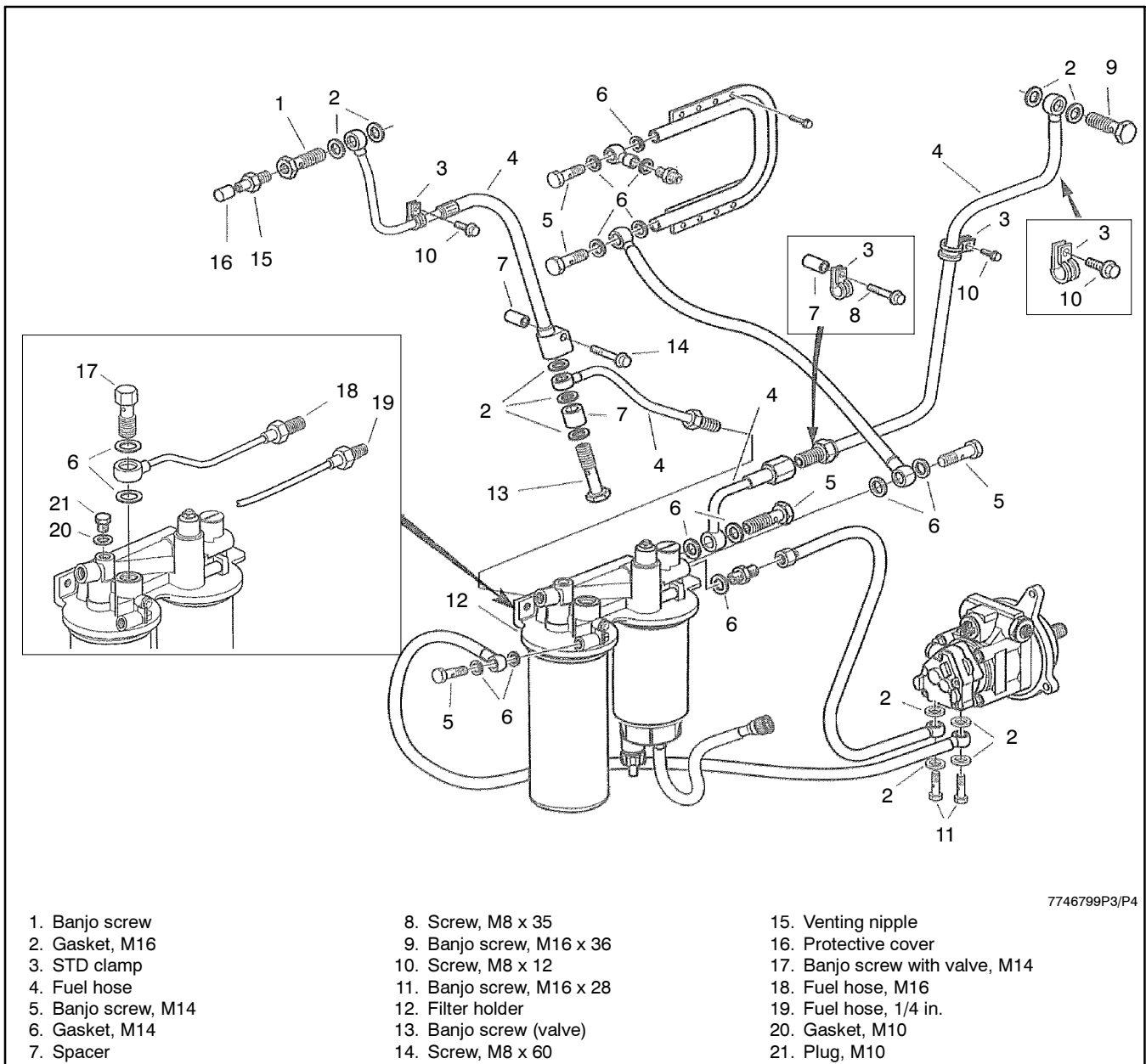


Figure 2 Existing Fuel System Components, Version 2

1.3.8 Remove the screw and small bracket where the large nut/fitting was removed from the existing filter head. Install the screw and small bracket on the new filter head. See Figure 3, item 16. To prevent stripped threads, be sure to keep the screw straight as it self threads in the filter head.

1.3.9 Remove three screws to remove the filter head from the engine. The existing filter head will not be reused.

1.3.10 Go to step 1.5.

1.4 Remove the existing fuel system components from version 2.

Use the following steps to remove the existing fuel system components and refer to Figure 2.

1.4.1 Disconnect the fuel line between the fuel pump and the water separator. Remove the fitting from the filter head and install the fitting in the new filter head 3848679 (Figure 3, item 3) using gasket 20869259 (Figure 3, item 14). The banjo screw and two gaskets removed from the fuel pump location will not be reused.

Note: The kit contains twelve gaskets 20852764 and two gaskets 20869259. These components are similar in size. Identify the two gaskets 20869259, as the rubber sealing material is triangular, to prevent misuse.

- 1.4.2 Disconnect the fuel line between the fuel pump and the fuel filter. The two banjo screws and four washers will not be reused.
- 1.4.3 Disconnect the fuel line from the cylinder head rear location. Disconnect the other end of this fuel line at the coupling. Remove the hose clamps, screws, and spacer. All parts removed in this step will not be reused.
- 1.4.4 Disconnect the fuel line from the water separator. The fuel line, banjo screw, and two washers will not be reused.
- 1.4.5 Disconnect the fuel supply banjo screw/fitting from the engine cooling loop. The two gaskets will not be reused.
- 1.4.6 Disconnect the fuel line between the water separator and the engine cooling loop. The two banjo screws and four washers will not be reused.
- 1.4.7 Disconnect the fuel line at the cylinder head front location where the banjo fitting and vent nipple are used. Remove the hose clamp, spacer, and screws. Remove the banjo screw, spacer, and three washers to separate the fuel lines going to the fuel filter. Remove the fuel line between the valve and the fuel filter. All parts removed in this step will not be reused.
- 1.4.8 Remove the large nut holding the fuel return line fitting at the fuel filter. The fuel line and fitting will not be reused. Save the large nut for installation later.
- 1.4.9 Remove the screw and small bracket where the large nut/fitting was removed from the existing filter head. Install the screw and small bracket on the new filter head. See Figure 3, item 16. To prevent stripped threads, be sure to keep the screw straight as it self threads in the filter head.
- 1.4.10 Remove three screws to remove the filter head from the engine. The existing filter head and small rubber hose and fitting will not be reused.

1.5 Install the new fuel system components.

Install the fuel hose kit using the following steps and refer to Figure 3 through Figure 7 as needed.

Note: When installing the gaskets and banjo screws, be certain that the rubber sealing material in the (metal) gasket does not break off and enter the banjo fitting.

- 1.5.1 Install the new filter head (3848679) using the three existing screws. Torque the M8 screws to 23 Nm (17 ft. lb.).
- 1.5.2 Assemble fuel hose 3888420 (Figure 4, item 12) to fuel hose 384586 (Figure 4, item 8). This hose assembly contains the non-return valve.
- 1.5.3 Attach fuel hose 3888420 (Figure 4, item 12) to water separator using banjo screw 991048 (Figure 3, item 18) and two gaskets 20852764 (Figure 3, item 17).

Note: The kit contains five banjo screws 991048 and one banjo restrictor screw 3847549. These components are similar in size and thread. Identify the banjo restrictor screw to prevent misuse.

Note: The kit contains twelve gaskets 20852764 and two gaskets 20869259. These components are similar in size. Identify the two gaskets 20869259 as the rubber sealing material is triangular to prevent misuse.

- 1.5.4 Attach the non-return valve/fuel hose assembly from step 1.5.2 to the engine block using spacer 826652 (item 3), hose clamp 949786 (item 1), and M8 x 35 screw 946470 (item 2) shown in Figure 5.

Note: Some engine models may not have this mounting location. Use an available mounting boss in close proximity.

- 1.5.5 Attach the existing fuel line between water separator and the fuel pump. Use a new banjo screw 991048 and two gaskets 20852764 at the fuel pump inlet location.
- 1.5.6 Attach the existing fuel line from the fuel pump to the fuel filter using two banjo screws 991048 (Figure 3, item 1) and four gaskets 20852764 (Figure 3, item 2).

- 1.5.7 Attach the fuel supply banjo screw/fitting to the engine cooling loop using two new gaskets 20852764.
- 1.5.8 Attach existing fuel line from engine cooling loop to right side of water separator using two banjo screws 991048 (item 9) and four gaskets 20852764 (item 10) shown in Figure 3.
- 1.5.9 Connect the water sensor electrical connector at the bottom of the water separator.
- 1.5.10 Install M10 plug 960628 (item 5) and gasket 20852762 (item 6) in filter head as shown in Figure 3. This location had a small rubber hose installed on the old filter head.

- 1.5.11 Install M14 plug 960630 (item 7) and gasket 20869259 (item 8) in filter head as shown in Figure 3.
- 1.5.12 Connect the electrical sensor at the top of the fuel filter.
- 1.5.13 Attach fuel hose 3847588 (item 20) to the left side of fuel filter as shown in Figure 4. This fuel return line has an O-ring with the fitting and connects between the fuel pressure valve and the filter head.

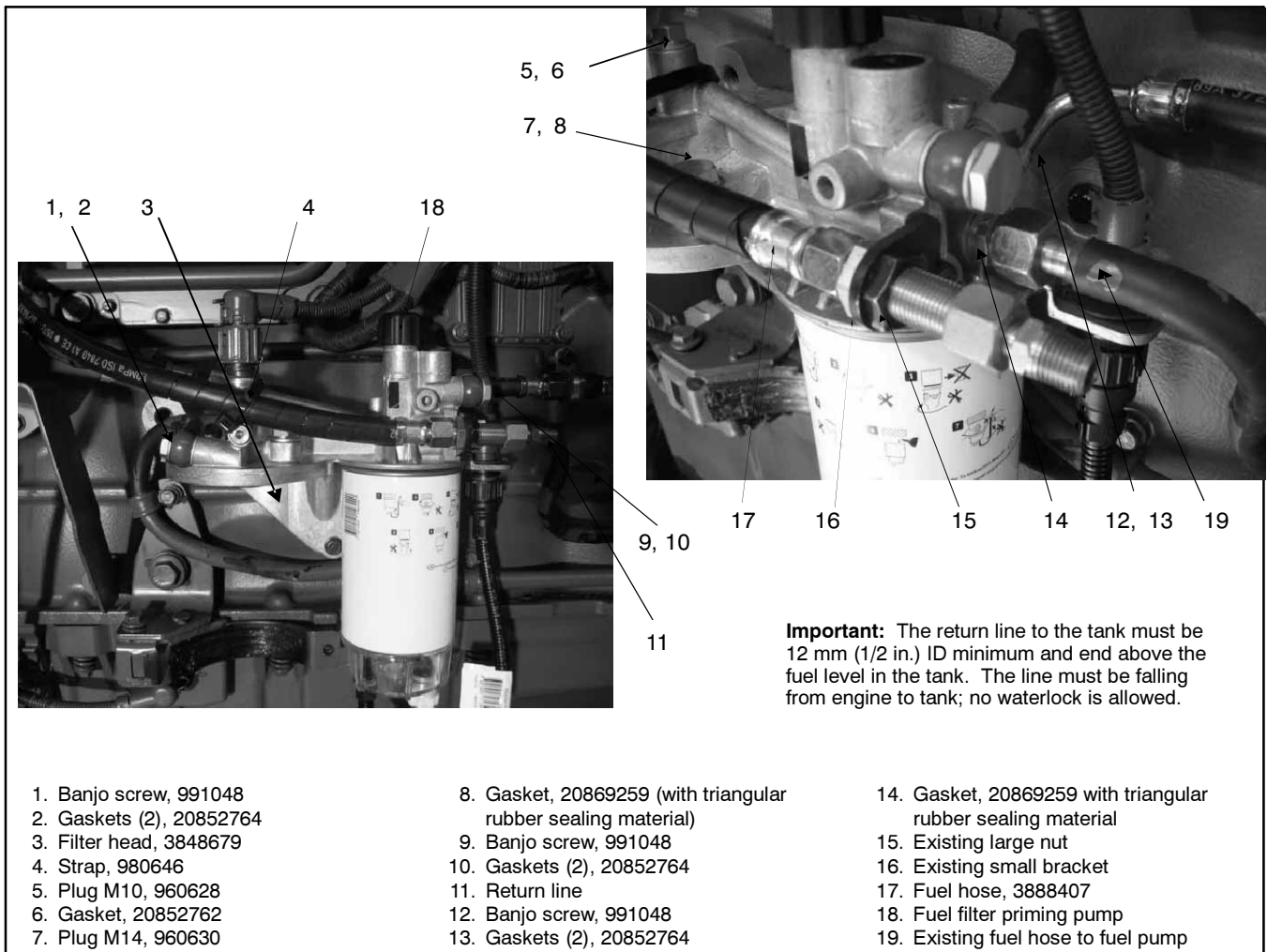


Figure 3 Filter Head Components

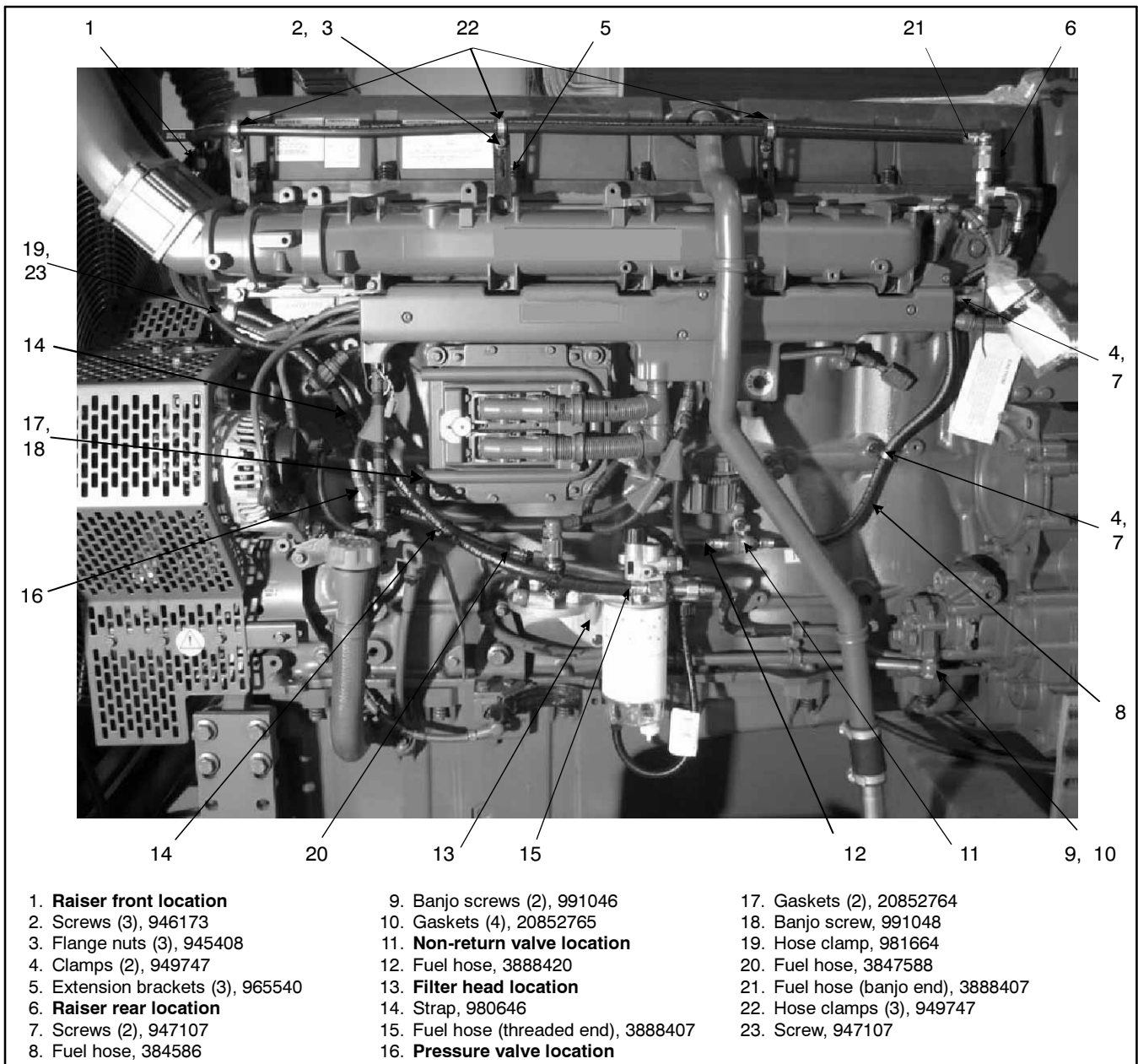


Figure 4 Fuel Hose Kit

1.5.14 Assemble the pressure valve components that include the fuel hose 3847587 (item 7), fuel hose 3847588 (item 6), pressure valve screw 20939532 (item 4), three gaskets 20852765 (item 3), and spacer 991656 (item 5) using the sequence shown in Figure 6. Do not final tighten the banjo screw at this time.

1.5.15 Attach the pressure valve assembly to the engine block using the M8 x 60 screw 965180 (item 2) and spacer 826652 (item 1) as shown in Figure 6. Position pressure valve as shown in Figure 6. Final tighten the banjo screw.

1.5.16 Remove the bottom fitting (rear nipple kit 3847590) on the rear riser, install the bottom fitting to the rear of the cylinder head, and attach and position the remaining rear riser assembly (evaporator valve 3847550) to the fitting as shown in Figure 7.

1.5.17 Route fuel hose 384586 (item 8) as shown in Figure 4 and attach to the rear riser. It may be necessary to loosen the fitting at the non-return valve (see Figure 5) in order to route the fuel hose without binding. Tighten the fitting at the non-return valve as needed.

1.5.18 Secure fuel hose 384586 (item 8) to the engine block using two hose clamps 949747 (item 4) and two M8 x 12 screws 947107 (item 7) at the positions shown in Figure 4.

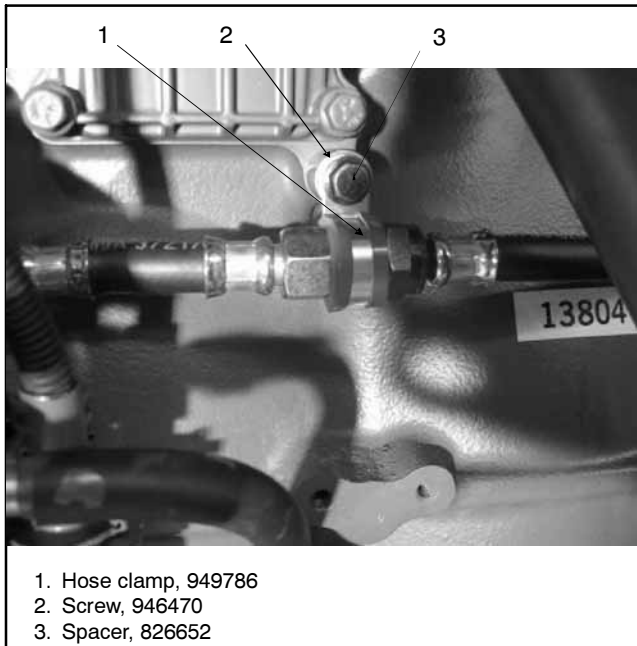


Figure 5 Non-Return Valve Components

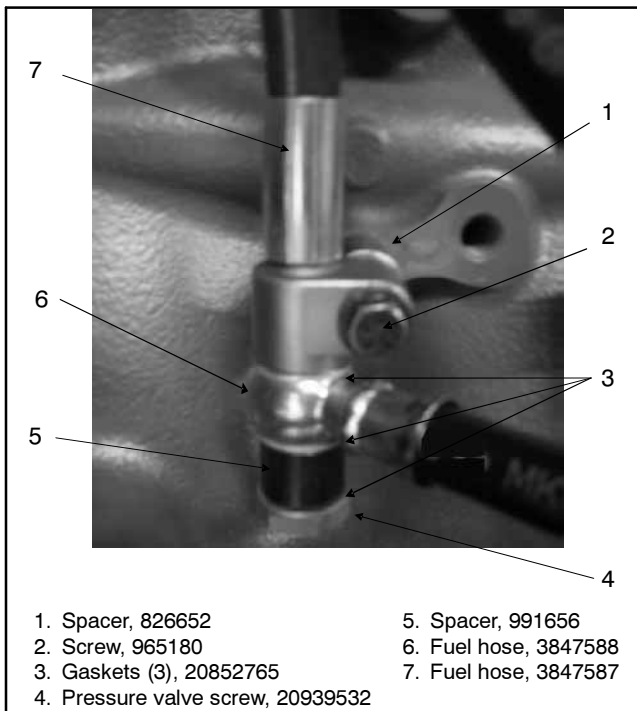


Figure 6 Pressure Valve Assembly Components

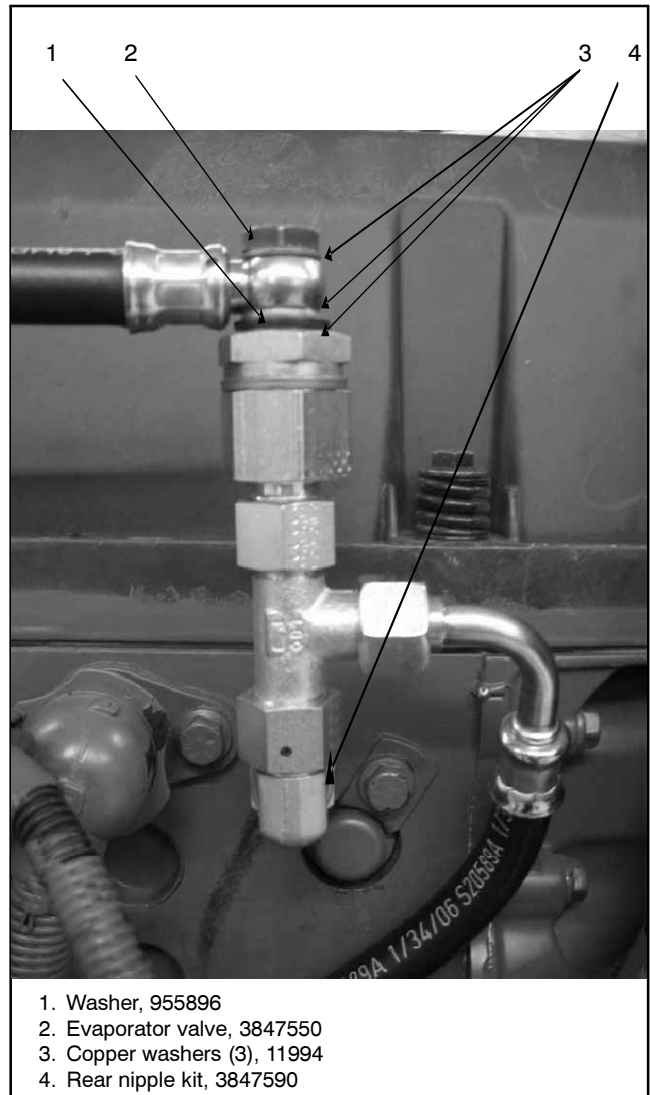


Figure 7 Rear Riser Components

1.5.19 Remove the radiator support bracket as necessary to access the front of the engine cylinder head in order to install the front riser.

1.5.20 Remove the bottom fitting (front nipple kit 3847589) on the front riser, install the bottom fitting to the front of the cylinder head, and attach and position the remaining front riser assembly (banjo screw restrictor 3847549) to the fitting as shown in Figure 8. Be sure to position the front riser 1-3 degrees counterclockwise in order to provide clearance between components and provide sufficient clearance to tighten the assembly.

Note: The use of a 22 mm crowfoot open end wrench may be necessary to sufficiently tighten assembly to engine cylinder head.

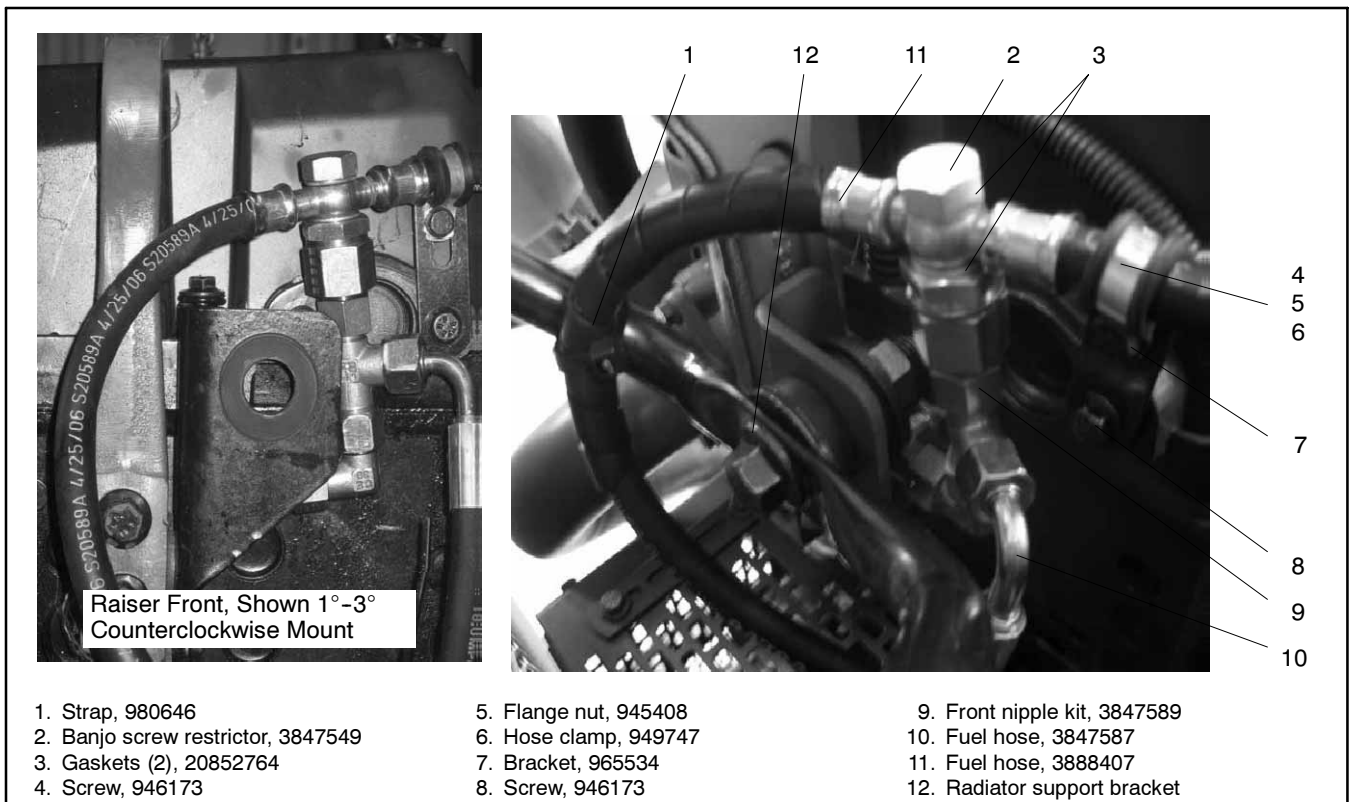


Figure 8 Front Riser Components

- 1.5.21 Attach fuel hose 3847587 (Figure 6, item 7) from the pressure valve assembly to the front riser. See Figure 8, item 10.
- 1.5.22 Remove three screws from the air charge manifold, add three extension brackets 965540 (item 5), and replace the existing screws as shown in Figure 4.
- 1.5.23 Remove screw on valve cover near front riser and install extension bracket 965534 (item 7) and M5 x 20 screw 946173 (item 8) as shown in Figure 8. Original screw will not be reused.
- 1.5.24 Install fuel hose 3888407 (item 11) to the front riser using banjo screw restrictor 3847549 (item 2) and two gaskets 20852764 (item 3) as shown in Figure 8. Do not final tighten the banjo screw restrictor at this time.
- 1.5.25 Route end of fuel hose 3888407 (item 17) with threaded end to the small bracket on the filter head (item 16) and install existing large nut (item 15) as shown in Figure 3.
- 1.5.26 Route end of fuel hose 3888407 with banjo fitting to rear riser and install, using evaporator valve (banjo screw) 3847550 (item 2), three copper washers 11994 (item 3), and washer 955896 (item 1) as shown in Figure 7.
- 1.5.27 Install three hose clamps 949747 (item 22) to fuel hose 3888407 (item 21) and attach to brackets using three M8 x 20 screws 946173 (item 2) and three flange nuts 945408 (item 3) as shown in Figure 4. Place hose clamp on bracket side away from valve cover. Final tighten screws on hose clamps to give excess fuel hose length at front riser to provide maximum fuel hose radius at front riser.
- 1.5.28 Install hose clamp 949747 (item 6) to fuel hose and attach to bracket using M8 x 20 screw 946173 (item 4) and flange nut 945408 (item 5) as shown in Figure 8.
- 1.5.29 Be sure fuel hose is not pinched and fuel hose wrap is up to banjo screw restrictor. Final tighten the banjo screw restrictor located on the front riser.
- 1.5.30 Locate the two fuel hoses attached to the front riser and going to the filter head. Place the large hose clamp 981664 (item 19) on the two fuel hoses and attach to the engine block using M8 x 12 screw 947107 (item 23) as shown in Figure 4.
- Note:** Do not over tighten the M8 x 12 screw.
- 1.5.31 Install strap 980646 (item 14) to fuel hoses as shown in Figure 4. Trim excess from strap.

- 1.5.32 Install strap 980646 (item 4) to fuel hose and fuel filter sensor as shown in Figure 3. Trim excess from strap.
- 1.5.33 Install strap 980646 (item 1) to fuel hose and engine bracket as shown in Figure 8. Trim excess from strap.
- 1.5.34 Install the existing fuel filter and water separator. Use a new fuel filter and/or water separator if damaged to the filters occurred during removal or if they became contaminated with dirt during the installation procedure.
- 1.5.35 Install the filter clamps, rubber strip, and wing nut to secure the filters. Locate the rubber strip behind the fuel filter.

1.6 Check and modify the fuel tank as needed.

- 1.6.1 Check and replace any fuel return line/hose that is not at least 12 mm (1/2 in.) minimum inside diameter.
- 1.6.2 Check if the fuel return to the fuel tank has a diptube going into the fuel tank. The diptube must be removed.
- 1.6.3 Install fuel supply and fuel return lines to generator set. Install the adapter fitting included in the kit on the fuel return connection as needed. The kit may contain additional fittings helpful in connecting the fuel lines.

Note: The kit may contain additional pieces that are not used in this application. These parts may help if additional components were removed.
- 1.6.4 Use remaining strap 980646 to protect fuel supply and fuel return hoses as needed.

1.7 Restore the generator set to service.

- 1.7.1 Check that each fuel fitting is tightened.
- 1.7.2 Clean up spilled fuel on and around the generator set. Dispose of used fuel and contaminated rags in a proper manner.
- 1.7.3 Open the fuel inlet valve and fuel return line valve, if equipped.

- 1.7.4 Use the priming pump located on the top of the fuel filter to prime the fuel system as shown in Figure 3, item 18. Press down and rotate slightly counterclockwise to release the plunger. Press the plunger down as least 50 times to purge air from the fuel system. If a new fuel filter and/or water separator was installed, pump an additional 20 times. Press down and turn slightly clockwise to lock the plunger. See the respective engine operation manual for additional information.

- 1.7.5 Replace radiator support bracket if removed during the installation procedure.

- 1.7.6 Check that the generator set master switch is in the OFF position.

- 1.7.7 Reconnect the generator set engine starting battery, negative (-) lead last.

- 1.7.8 Reconnect power to the battery charger, if equipped.

1.8 Test run the generator set to check for leaks.

- 1.8.1 Place the generator set master switch to the RUN position to start the generator set.

- 1.8.2 Immediately stop the generator set if a fuel leak is detected. Otherwise, run the unit for five minutes and stop the generator set.

- 1.8.3 Check for leaks. If any leaks are found, disable the generator set and repair the leaks. Restore the generator for operation.

- 1.8.4 Place the generator set master switch to the RUN position to start the generator set and run for a minimum of 30 minutes. Immediately stop the generator set if a fuel leak is detected.

- 1.8.5 Check for leaks. If any leaks are found, disable the generator set and repair the leaks.

- 1.8.6 Restore the generator set to service. Exercise the generator set once each week for one hour with at least 35% load in the presence of an operator if the unit does not have a programmed exercise mode and an automatic transfer switch with an exercise option.

2 Parts List (Packing List)

Fuel Hose Service Kit GM51304

| Qty. | Description | |
|------|---|----------|
| 1 | Fuel hose (back of cylinder head inlet to fuel filter head) | 3847586 |
| 1 | Fuel hose (cylinder head to fuel filter head) | 3888420 |
| 1 | Fuel hose (front of cylinder head to pressure valve) | 3847587 |
| 1 | Fuel hose with three fittings (front of cylinder head to fuel filter head) (includes the fuel return adapter) | 3888407 |
| 1 | Fuel hose (fuel filter head to fuel return) | 3847588 |
| 1 | Pressure valve screw | 20939532 |
| 1 | Spacer (used with pressure valve screw 20939532) | 991656 |
| 7 | Gasket, M16 x 16 | 20852765 |
| 1 | Hose clamp | 949786 |
| 2 | Spacer, 8.4 x 20 x 20 | 826652 |
| 1 | Screw, M6FS M8 x 35 | 946470 |
| 1 | Screw, M6FS M8 x 60 | 965180 |
| 1 | Plug, M10 x 1-6C-8 | 960628 |
| 1 | Gasket, M10 x 10 | 20852762 |
| 12 | Gasket, M14 x 14 | 20852764 |
| 2 | Banjo screw, M16 | 991046 |
| 5 | Banjo screw, M14 | 991048 |
| 2 | Gasket, M14 with triangular rubber sealing material | 20869259 |
| 3 | Extension bracket (long length at valve cover) | 965540 |
| 6 | Hose clamp, 15, 9 | 949747 |
| 5 | Screw, M6FS M8 x 20 | 946173 |
| 4 | Flange nut, M8 | 945408 |
| 1 | Plug, M14 x 1 (at filter head) | 960630 |
| 1 | Rear nipple kit (at rear of cylinder head) | 3847590 |
| 1 | Evaporator valve, M12 x 1.5 (on rear nipple kit) | 3847550 |
| 3 | Copper washer, 12 x 18 (on evaporator kit) | 11994 |
| 1 | Washer, 12 x 22 x 2 | 955896 |
| 1 | Hose clamp (at engine front under intake manifold) | 981664 |
| 3 | Screw, M6FS M8 x 12 | 947107 |
| 1 | Front nipple kit (at front of cylinder head) | 3847589 |
| 1 | Banjo screw restrictor 0.8 mm (on front nipple kit) | 3847549 |
| 4 | Strap (on return line) | 980646 |
| 1 | Bracket (on front valve cover) | 965534 |
| 1 | Filter head | 3848679 |

3 Parts List by Group

| Qty. | Description | |
|---|---|----------|
| Front Riser Components | | |
| 1 | Front nipple kit (at front of cylinder head) | 3847589 |
| 1 | Strap (on return line) | 980646 |
| 1 | Banjo screw restrictor, 0.8 mm (on front nipple kit) | 3847549 |
| 2 | Gasket, M14 x 14 | 20852764 |
| 5 | Screw, M6FS M8 x 20 | 946173 |
| 4 | Flange nut, M8 | 945408 |
| 4 | Hose clamp, 15, 9 | 949747 |
| 1 | Bracket (on front valve cover) | 965534 |
| 1 | Hose clamp (at engine front under intake manifold) | 981664 |
| 1 | Screw, M6FS M8 x 12 | 947107 |
| 1 | Fuel hose with three fittings (front of cylinder head to fuel filter head) (includes the fuel return adapter) | 3888407 |
| 3 | Extension bracket (long length at valve cover) | 965540 |
| Rear Riser Components | | |
| 1 | Evaporator valve, M12 x 1.5 (on rear nipple kit) | 3847550 |
| 1 | Washer, 12 x 22 x 2 | 955896 |
| 3 | Copper washer, 12 x 18 (on evaporator kit) | 11994 |
| 1 | Nipple kit (at rear of cylinder head) | 3847590 |
| 2 | Hose clamp, 15, 9 | 949747 |
| 2 | Screw, M6FS M8 x 12 | 947107 |
| 1 | Fuel hose (rear of cylinder head inlet to fuel filter head) | 3847586 |
| Pressure Valve Assembly Components | | |
| 1 | Pressure valve screw | 20939532 |
| 3 | Gasket, M16 x 16 | 20852765 |
| 1 | Screw, M6FS M8 x 60 | 965180 |
| 1 | Spacer, 8.4 x 20 x 20 | 826652 |
| 1 | Spacer (used with pressure valve screw 20939532) | 991656 |
| 1 | Fuel hose (front of cylinder head to pressure valve) | 3847587 |
| Filter Head Components | | |
| 1 | Filter head | 3848679 |
| 3 | Strap (on return line) | 980646 |
| 2 | Gasket, M14 with triangular rubber sealing material | 20869259 |
| 1 | Plug, M14 x 1 (at filter head) | 960630 |
| 1 | Gasket, M10 x 10 | 20852762 |
| 1 | Plug, M10 x 1-6C-8 | 960628 |
| 5 | Banjo screw, M14 | 991048 |
| 10 | Gasket, M14 x 14 | 20852764 |
| 2 | Banjo screw, M16 | 991046 |
| 4 | Gasket, M16 x 16 | 20852765 |
| 1 | Fuel hose (fuel filter head to fuel return) | 3847588 |
| Non-Return Valve Components | | |
| 1 | Hose clamp | 949786 |
| 1 | Screw, M6FS M8 x 35 | 946470 |
| 1 | Spacer, 8.4 x 20 x 20 | 826652 |
| 1 | Fuel hose (cylinder head to fuel filter head) | 3888420 |