

KOHLER® POWER SYSTEMS



INSTALLATION INSTRUCTIONS

Pusher Fan Installation Kit PA-225944 15/20CCO/CCOZ-RV/Mobile Generator Sets

The pusher fan kit is designed to reverse the direction of the air flow through the radiator. Read the entire procedure before installing. Observe all safety precautions during kit installation.

The following procedure is used for installing a pusher fan.



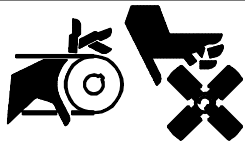
Accidental starting.

Can cause severe injury or death.

Disconnect battery cables before working on generator set (negative lead first and reconnect it last).

Accidental starting can cause severe injury or death. Disconnect battery cables (remove negative lead first and reconnect it last) to disable generator set before working on any equipment connected to generator. The generator set can be started by remote start/stop switch unless this precaution is followed.

WARNING



Rotating parts.

Can cause severe injury or death.

Do not operate generator set without all guards, screens, or covers in place.

Exposed moving parts can cause severe injury or death. Keep hands, feet, hair, clothing, and test leads away from belts and pulleys when unit is running. Replace guards, covers, and screens before operating generator set.

WARNING



Hot coolant and steam.

Can cause severe injury or death.

Before removing pressure cap stop generator, allow to cool and loosen pressure cap to relieve pressure.

Hot coolant can cause severe injury or death. Allow engine to cool and release pressure from cooling system before opening pressure cap. To release pressure, cover the pressure cap with a thick cloth then turn it slowly counterclockwise to the first stop. After pressure has been completely released and the engine has cooled, remove cap. If generator set is equipped with a coolant recovery tank, check coolant level at tank.

INSTALLATION

1. Move the Start/Stop switch to the STOP position. Disconnect the battery cables, negative lead first.
2. Allow the engine to cool completely.
3. Drain coolant from radiator.

NOTE

HARDWARE DAMAGE! Engine and generator may make use of both American Standard and metric hardware. Be sure to use the correct size tools to prevent rounding of bolt heads and nuts.

4. Before removing the hose, loosen both of the hose clamps from the upper radiator hose.

NOTE

Keep all parts and hardware for reassembly unless otherwise instructed.

5. Before removing the hose from the radiator, loosen the hose clamp on the lower radiator hose.
6. Remove the right, left, and top belt guards.
7. Unbolt the fan shroud from the radiator. Slide the shroud away from the radiator toward the engine.
8. Remove the four bolts that hold the radiator to the radiator mounting bracket. See Figure 1.
9. Gently slide the radiator up and out of its mounting bracket. **Do not damage the radiator.**
10. Remove the fan shroud and set it aside.
11. Loosen the fan belt by backing off the bolt on the alternator adjustment arm just enough to slide the alternator toward the engine.
12. Remove the four bolts holding the fan to the water pump pulley. Discard the fan.
13. Place the new fan on the water pump pulley and tighten the four bolts that hold it in place. Be sure the fan is mounted in the correct direction. See Figure 2.

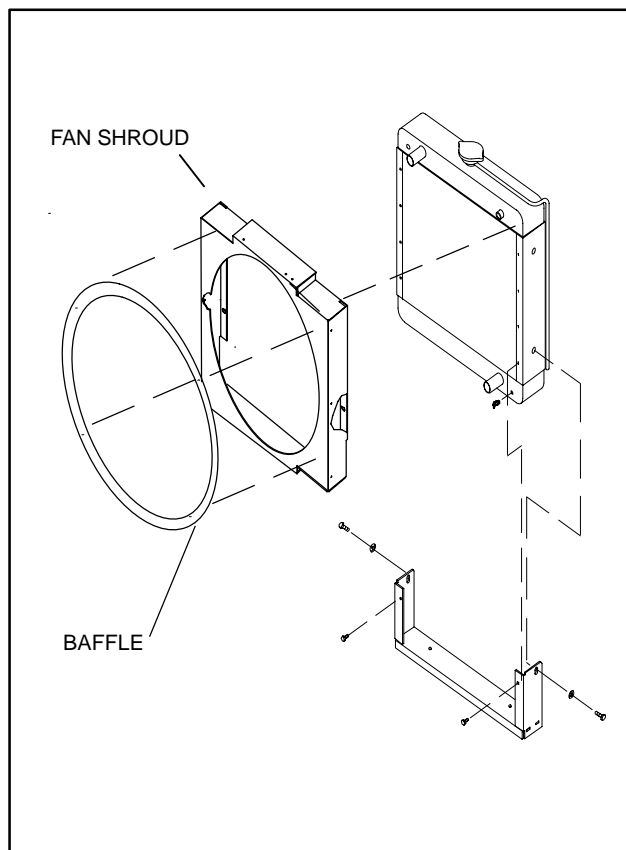


Figure 1. Kit Installation

14. Retighten the fan belt according to the procedure in the operations manual (TP-5605).
15. Using the fan baffle as a template, make four holes on the fan shroud on the side facing the engine. Mount the fan baffle to the fan shroud, using the four screws included in the kit. See Figure 1.

NOTE

New fan shrouds have the four mounting holes prestamped through the shroud.

16. Place the fan shroud over the fan and up against the engine.
17. Slide the radiator into its mounting bracket, making sure the fan shroud is not in the way. Install the four bolts that hold the radiator to its bracket.
18. Slide the fan shroud against the radiator and bolt it in place.
19. Reinstall the right, left, and top belt guards.
20. Slide the lower radiator hose onto the radiator and tighten the hose clamp.

21. Reinstall the upper radiator hose and tighten the hose clamps.

NOTE

Special attention should be given when checking for proper coolant level. After the coolant has been drained, some time is required before complete refill of the engine water jacket takes place.

NOTE

ENGINE DAMAGE! Failure to bleed air from cooling system may cause overheating and subsequent damage to engine.

22. Fill the radiator with approved coolant and check for leaks. Repair any leaks before operating the generator set.
23. Reconnect the battery, negative lead last.
24. Start the generator set and check for leaks. If any leaks occur, shut down the set immediately and make repairs.
25. Operate the generator set for two or three minutes before shutting it down and rechecking the coolant level.

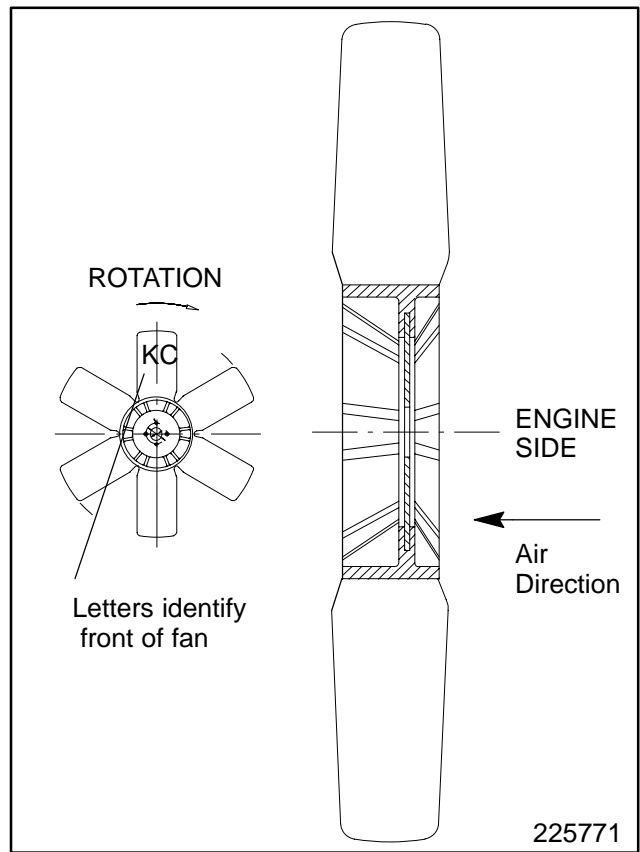


Figure 2. Proper Fan Installation

Parts List		
PA-225944		
Qty.	Description	Part Number
4	Screw, philips hex	X-6216-1
1	Fan, pusher	225771
1	Baffle, fan	225942