



### Mounting Tray Kits 7CMZ21-RV “Low Profile” Generator Set

| Kit No.   | Type                                 |
|-----------|--------------------------------------|
| PA-278215 | Larger Tray Kit<br>(28.3 x 22 in.)   |
| PA-278250 | Oversize Tray Kit<br>(38.2 x 24 in.) |

These mounting tray kits use trays that extend beyond the full length and width of the generator. The bigger trays allow the generator to be attached directly to the compartment floor or secured by brackets to the compartment frame. The mounting tray kits also permit slide tray installation. Whichever installation method is selected, allow sufficient room for the generator to be easily removed if major service is required. During installation, observe the minimum clearances and safety precautions listed below and in the Operation and Installation Manual (TP-5244).

|       |                     |
|-------|---------------------|
| Front | 1-1/2 in. (38.1 mm) |
| Side  | 1-1/2 in. (38.1 mm) |
| Top   | 1/2 in. (12.7 mm)   |
| Rear  | 1-1/2 in. (38.1 mm) |

#### Minimum Clearance Requirements

#### **⚠ WARNING**

**UNINTENTIONAL STARTING!** To prevent accidental starting, disconnect battery (remove negative lead first and reconnect it last) and remove spark plug lead(s) at spark plugs.

#### **⚠ WARNING**

**HOT PIPING!** An engine gets hot while running and exhaust system components get extremely hot. Do not work on generator set until unit has cooled.

#### **⚠ WARNING**

**FLASH FIRE!** A sudden flash fire can cause serious burns. To avoid the possibility of a flash fire, do not smoke or permit flame or spark to occur near carburetor, fuel line, fuel filter fuel pump, or other potential sources of spilled fuel or fuel vapors.

#### **⚠ WARNING**

**FIRE HAZARD!** Keep the compartment and generator set clean and free of debris and combustible materials to minimize the chances of fire. An opening is provided in the mounting tray of each set as a safety feature to allow any fuel or oil that might possibly leak out of the system to drain out of the compartment—make sure this opening is not blocked in any way when the set is installed. If sub-flooring is used, cut a corresponding hole in the sub-flooring for this drain opening.

Prior to installation of either tray kit, the generator must be removed from the coach. Disconnect battery, fuel line, exhaust system and load leads.

1. Remove mounting hardware securing generator tray to compartment frame or floor. Depending on installation, a hoist or lift may be necessary to support generator during removal of mounting hardware.
2. Using a hoist or lift, remove generator set from support structure.
3. Align mounting holes in new tray (278208 or 278249) with those in tray already attached to the generator set. Secure new tray directly to existing tray with screw (X-7-8), lock washer (X-22-1), and nut (X-83-2). See Figure 1.
4. Using a lift or hoist, carefully return generator to the coach compartment and secure to compartment floor or frame (see the Operation and Installation Manual - TP-5244). The same number of bolts as mounting holes in the tray must be used to secure the tray to the support structure.

#### **CAUTION**

To avoid the possibility of igniting combustible material beneath the coach, the mounting tray must extend the full length and width of the enclosure or a fireproof floor must be installed on generator end between mounting tray and enclosure walls.

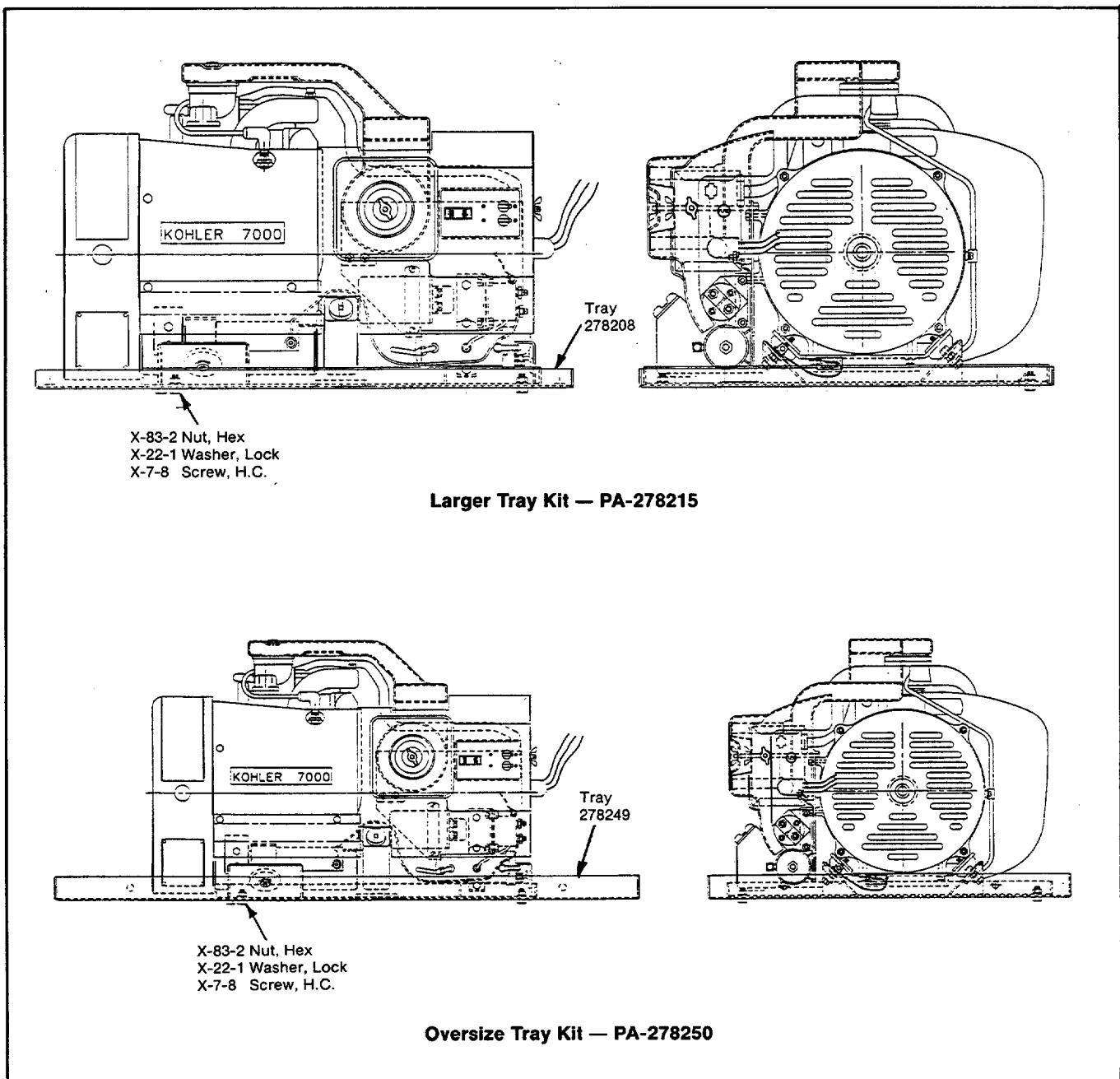
**CAUTION**

If the generator set compartment is constructed with a floor beneath the set mounting tray, corresponding openings must be cut in the floor to allow cooling air discharge and oil drainage. The remaining floor should be closed off to prevent recirculation of hot air which could cause overheating of the generator set. See Figure 2 for floor templates.

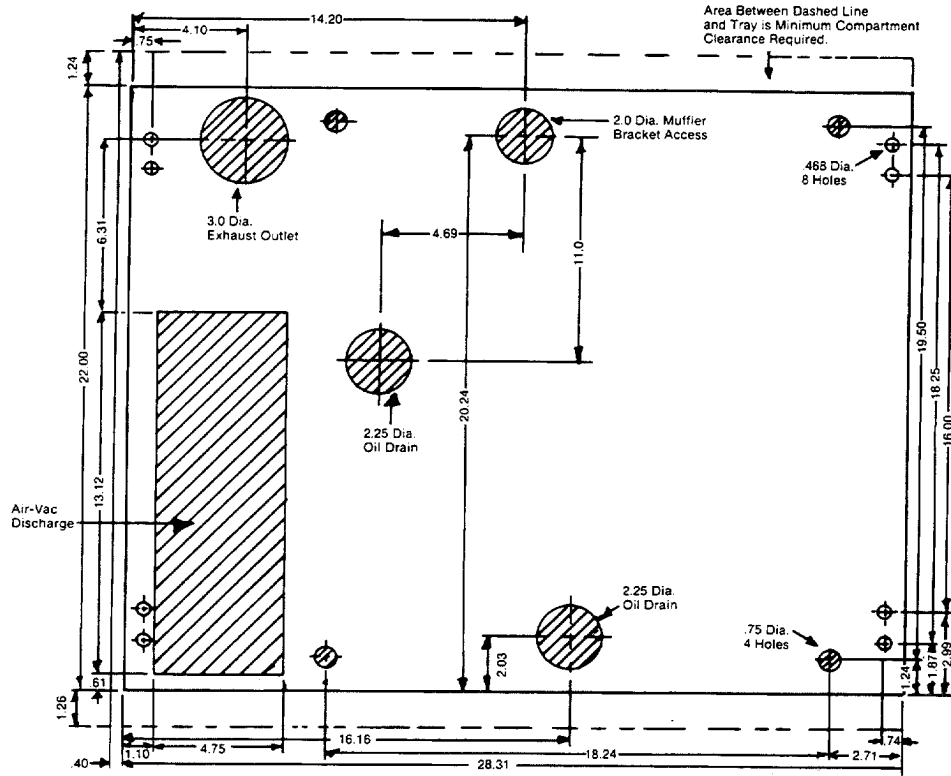
5. Reconnect exhaust system, fuel line, battery and load leads.
6. Check for proper operation of the generator set. The generator must be securely mounted to avoid unwanted movement from vibration and road shock.

**PARTS LISTING**

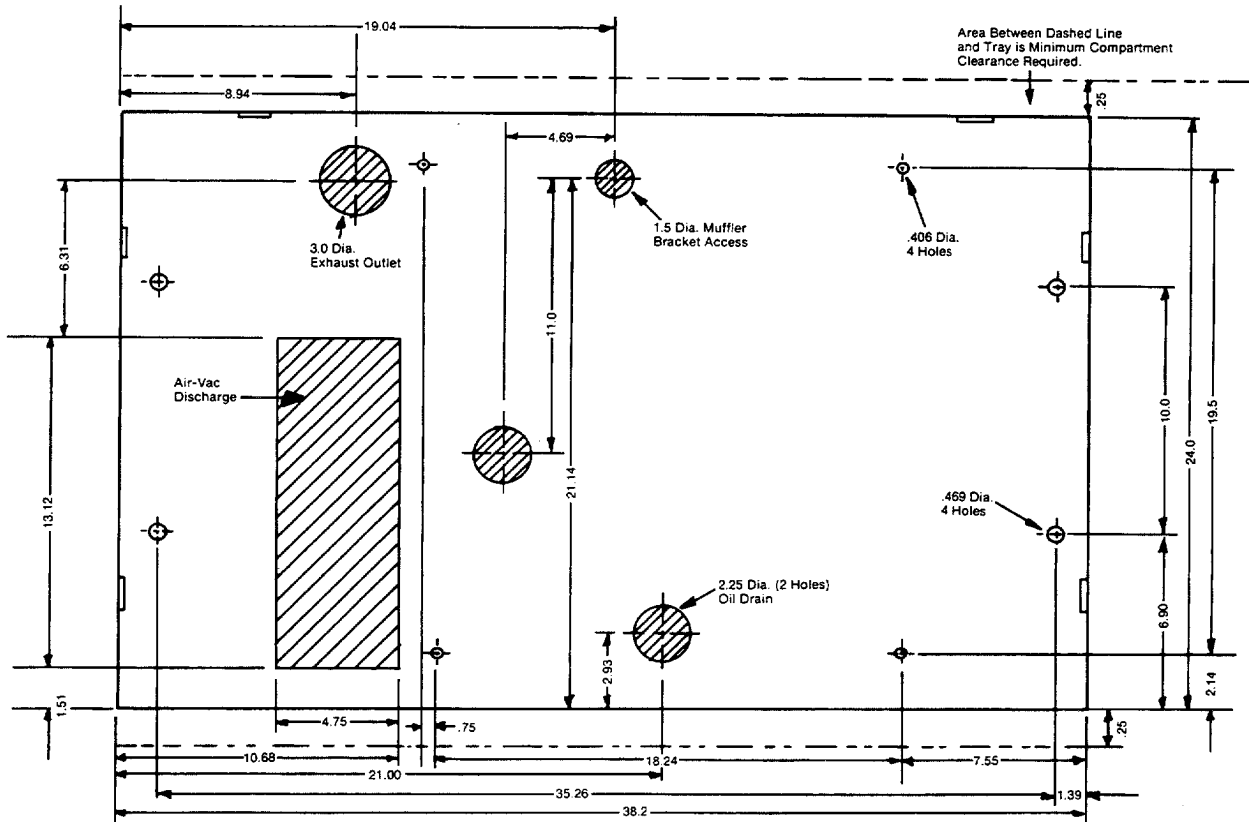
| Description                | Qty. | PA-278215 | PA-278250 |
|----------------------------|------|-----------|-----------|
| Washer, lock 3/8           | 4    | X-22-1    | X-22-1    |
| Screw, H.C. 3/8 - 16 x 3/4 | 4    | X-7-8     | X-7-8     |
| Nut, hex 3/8 - 16          | 4    | X-83-2    | X-83-2    |
| Tray                       | 1    | 278208    | 278249    |



**Figure 1. Tray Installation**



**Larger Tray Template — PA-278215**



**Oversize Tray Template — PA-278250**

**Figure 2. Floor Templates**