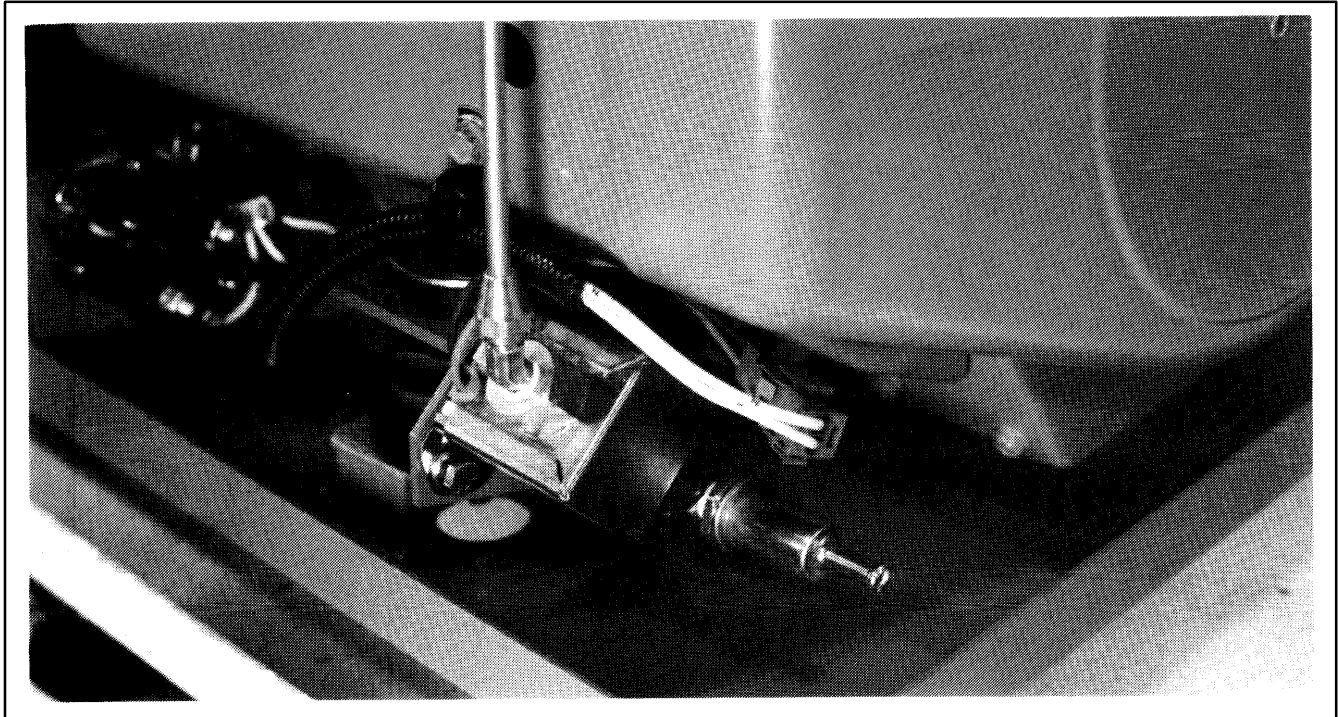




Solid State Fuel Pump Kit #278743 4.5CKM-RV Generator Sets



⚠ WARNING

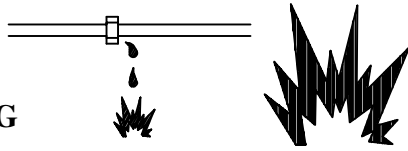
Accidental starting can cause death or serious personal injury. Disconnect battery cables (remove negative lead first and reconnect it last) to disable generator set before working on any equipment connected to generator. The generator set can be started by remote start/stop switch unless this precaution is followed.



⚠ WARNING

A flash fire can cause serious burns. Do not smoke or permit flame or spark to occur near carburetor, fuel line, fuel filter, fuel pump, or other potential sources of spilled fuel or fuel vapors. When removing fuel line or carburetor, use a proper container to catch all fuel.

Spilled fuel can ignite on contact with hot engine parts. Use a container to catch fuel when draining fuel system. Wipe up all spilled fuel after draining system.

 **WARNING**

All fuels are highly explosive in a vapor state. Use extreme care when handling, storing, and using fuels

Store fuel in a well-ventilated area away from spark producing equipment and out of the reach of children. Never add fuel to the tank while the engine is running since spilled fuel may ignite on contact with hot parts or from ignition spark. Do not smoke or permit flame or spark to occur near potential sources of spilled fuel or fuel vapors. Keep fuel lines and connections tight and in good condition—don't replace flexible fuel lines with rigid lines. Flexible sections are used to avoid breakage due to vibration. Additional precautions must be taken when using the following fuel:

Gasoline – Store gasoline only in approved red containers clearly marked GASOLINE. Do not store gasoline in any occupied building.

To remove existing round fuel pump and replace with solid state version, use the following procedure:

1. Disconnect battery, negative lead first.
2. Using a container to catch spilled fuel, disconnect fuel line at fuel pump and carburetor and discard fuel line. Dispose of fuel in suitable container. Wipe up spilled fuel.

3. Remove hardware securing round fuel pump to generator frame. Remove fuel pump and discard. (Save mounting hardware). Mount new fuel pump mounting bracket 278742 to existing engine mounting bracket using existing mounting hardware and new hardware supplied in kit. (See Figure 1).
4. Install new fuel pump as illustrated in Figure 2. Using a standard crimping tool, attach terminal X-431-25 to the fuel pump negative lead. Snap terminal X-431-25 into the already attached terminal on lead SWON-1804-15015. Attach ring terminal end of lead SWON-1804-15015 to blower housing mounting screw or fuel pump mounting screw. Connect X-431-29 terminal to the fuel pump positive lead using a standard crimping tool to attach. Snap in place to existing positive lead (6) in wiring harness.
5. Install new fuel line 278491 and secure to carburetor and new fuel pump. See Figure 2.
6. Reconnect generator battery, negative lead last.
7. Start generator set and examine fuel pump/fuel line for leaks. If leak occurs, stop generator set and tighten fuel line fittings.

Parts Listing

Part Number	Description	Qty
SWON-1804-15015	Lead	1
X-20-1	Washer, Lock 1/4	1
X-22-12	Shakeproof Washer	1
X-431-25	Terminal	1
X-431-29	Terminal	1
X-465-6	H.C. Screw	1
X-555-2	Elbow, Street 1/8 x 1/8	1
X-6235-1	45 Degree Elbow	1
X-81-1	Nut, Hex. 1/4-20	1
249433	Fuel Filter	1
249862	Fuel Pump	1
278491	Fuel Line	1
278742	Pump Mounting Bracket	1

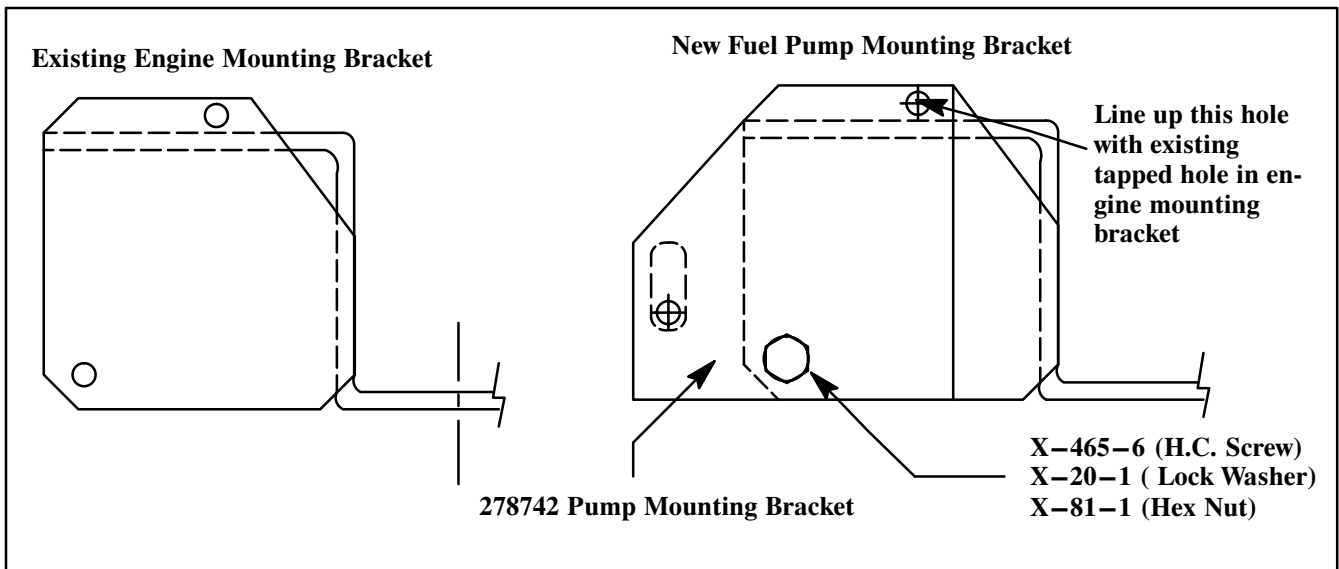


Figure 1.

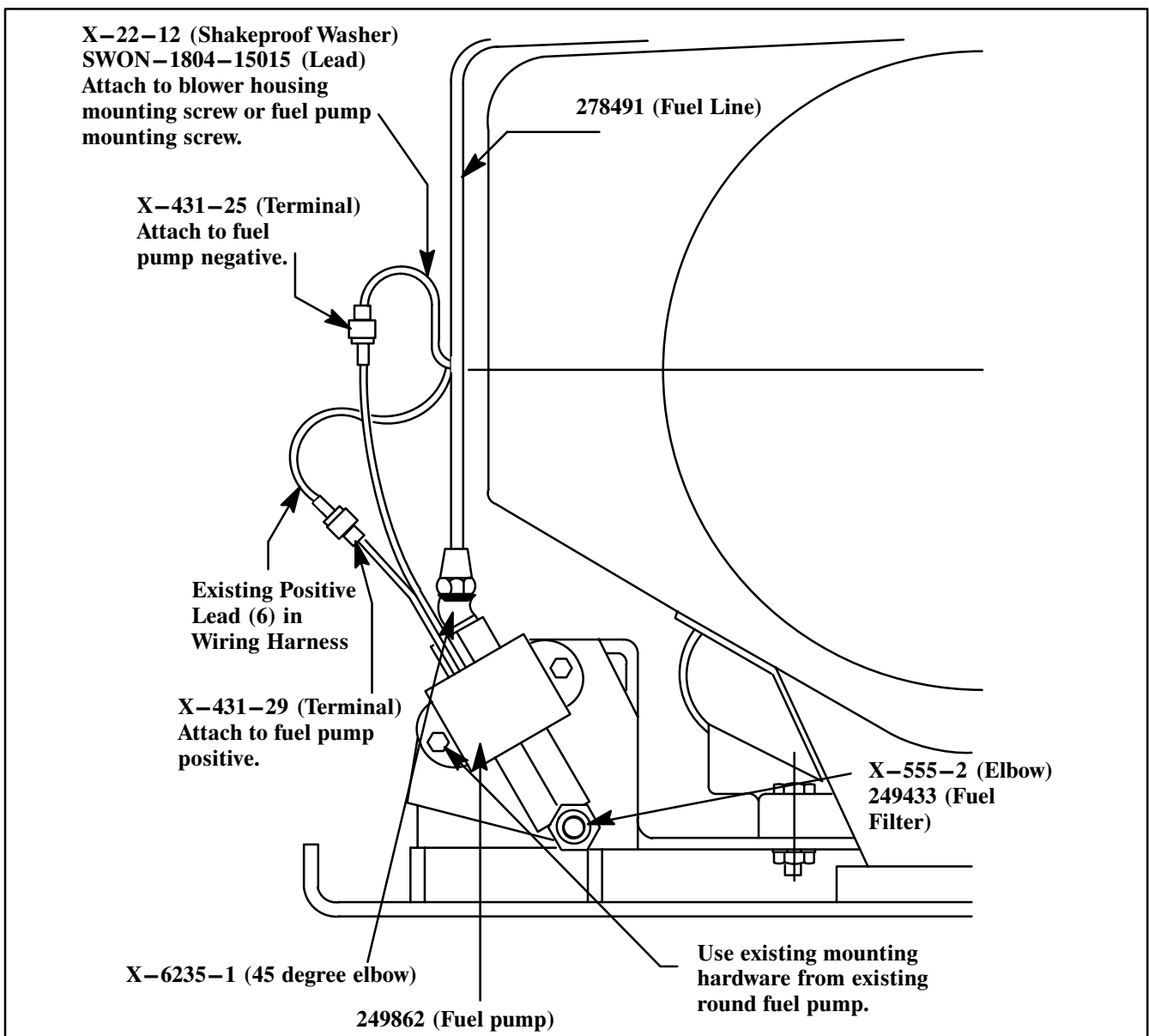


Figure 2.