



4 and 5kW RV Enclosure and Hinge Kit (PA-278956) For Below the Floor Tray Mounting

The below the floor tray kit is designed to ease serviceability of the generator set while the set is permanently mounted in an enclosure below the motor home's floor. Certain service may be performed while the generator is in the up-position, and certain service can only be performed while the unit is in the tilted down-position. Follow the general guidelines set below.

UP POSITION:

- | | |
|------------------------------|--|
| Check oil level | |
| Check air cleaner | Remove small supporting bracket (227490). Support unit while servicing |
| Oil change/oil filter change | Remove large housing bracket (278934). Support unit while servicing |
| Choke adjustment | |
| Carburetor adjustment | |
| Fuse replacement | |
| Voltage regulator adj. | Remove access panel on right-hand side |

DOWN POSITION:

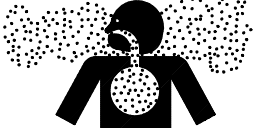
- Service or replace spark plugs
- Check valve-tappet clearance
- Service cylinder heads

NOTE

Before swinging down generator set to perform service, disconnect fuel lines and remove exhaust system components to prevent tail pipe from getting damaged.

NOTE

Generator sets equipped with optional "swing down" tray should not be left in the tilted position for any extended period (one hour or more) otherwise, hydrostatic lock can occur. Always place unit in the normal mounting position when service is not actually being performed.

⚠ WARNING

<p>Carbon monoxide. Can cause severe nausea, fainting, or death.</p> <p>The exhaust system must be leakproof and routinely inspected.</p>

Carbon monoxide can cause severe nausea, fainting, or death. Never operate the generator set inside a building unless the exhaust gas is piped safely outside. Never operate in any area where exhaust gas could accumulate and seep back inside an occupied building or vehicle. Be careful when parking your vehicle to avoid obstructing the exhaust outlet. The exhaust gases must discharge freely, otherwise carbon monoxide may deflect into the vehicle. Avoid breathing exhaust fumes when working on or near the generator set. Carbon monoxide is particularly dangerous because it is an odorless, colorless, tasteless, nonirritating gas which can cause death if inhaled for even a short period of time.



Accidental starting.

Can cause severe injury or death.

Disconnect battery cables before working on generator set (negative lead first and reconnect it last).

Accidental starting can cause severe injury or death. Disconnect battery cables (remove negative lead first and reconnect it last) to disable generator set before working on any equipment connected to generator. The generator set can be started by remote start/stop switch unless this precaution is followed.

NOTE

Enclosure side adjacent to muffler must be of noncombustible material.

NOTE

Keep 9.8" minimum clearance between muffler top surface and motor home floor surface.

NOTE

When assembling components together, work hardware through mounting holes from outer to inner surface of enclosure. Use Figure 2 for proper positions.

Installation

1. If removing the generator set from a coach, move controller master switch to STOP position. Disconnect battery of generator set, negative lead first. Disconnect fuel lines, load leads, electrical leads, and exhaust system.
2. Attach the right panel assembly, the panel with the cutout, (A-227489) to the back panel assembly, the panel with the hinges attached, (A-227487) using one screw (X-6217-1) in the upper corner. In the lower corner, attach the panels using screw (X-6217-5).
3. Attach the left panel assembly (A-227488) to the back panel assembly using one screw

(X-6217-1) in the upper corner. Position heat shield (278866) onto the left panel (A-227488) by aligning the mounting holes. Attach the heat shield, to the left panel and the back panel using screw (X-6217-5). Attach the front end of the heat shield to the left panel by using whiz nut (X-6210-7) and screw (X-125-33).

NOTE

All components which are required to be mounted to the motor home should follow the mounting hole pattern supplied in Figure 1. Hardware for this purpose is not included in this kit due to varying thicknesses of a motor home's floor. Minimum size required of hardware is 3/8-16.

4. Mount the panel assemblies to the motor home.
5. Install plain washer (X-25-40) over pem stud (pem stud is mounted in the tray #278937) at location shown in Figure 2. Install the panel insulator (233269) onto pem stud. Install brass stud (237612) into the other end of the panel insulator. Connect battery cable (X-545-55) to the brass stud. Next, install in the following order: plain washer (X-25-40), whiz nut (X-6210-2), plain washer (X-25-40), and whiz nut (X-6210-2). Attach boot (238915) over assembly. See Figure 2, View A.
6. Position the generator set in tray (278937). Secure the generator set to the tray using four screws (X-6217-5).
7. Attach two hinge plates (278924) – open end out – to tray (278937) using four screws (X-67-115).
8. Raise the generator set (with the tray attached) and position underneath panel assemblies. Support unit while final assembly procedures are taking place

9. Position hinges (attached to back panel) underneath rolled edge on hinge plates. Fasten center holes to tray using two screws (X-67-114).
10. Attach battery cable, installed in Step #5, to starter solenoid on generator set. Cover with boot (238915).
11. Mount brackets (278934) and (277491) to motor home at locations shown in Figure 2.
12. Attach housing support (278935) into holes provided in bracket (278934) and tray. Secure with four screws (X-6217-1).
13. Attach support bracket (227490) to bracket (227491) and tray using two screws (X-67-115).
14. Affix decals (278850 and 227492) as shown in Figure 2.
15. Install five screws (X-67-115) to right assembly panel and tray.
16. Connect generator battery, negative lead last. Connect fuel line, load lead, electrical leads, remote leads, and exhaust system.

Tray Kit PA-278956		
DESCRIPTION	QTY.	PART #.
Screw, H.C. 5/16-18 x 1/2	1	X-125-33
Washer, plain 9/32 x 5/8 x .05	3	X-25-40
Decal, warning	1	278850
Shield, heat	1	278866
Bracket, housing	1	278934
Support, housing	1	278935
Back Panel Assembly	1	A-227487
Left Panel Assembly	1	A-227488
Right Panel Assembly	1	A-227489
Cable, Battery	1	X-545-55
Nut, Whiz 1/4-20	2	X-6210-2
Screw, Self Tapping 1/4-20 x 1/2	11	X-67-115
Bracket, support	1	227490
Bracket	1	227491
Decal	1	227492
Insulator, Panel	1	233269
Stud, Brass	1	237612
Boot	2	238915
Plate, Hinge	2	278924
Tray	1	278937
Nut, Whiz 5/16-18	1	X-6210-7
Screw, Self Tapping 1/4-20 x 3/4	2	X-67-114
Hex. Flange Screw 3/8-16	6	X-6217-5
Hex. Flange Screw 5/16-18	6	X-6217-1

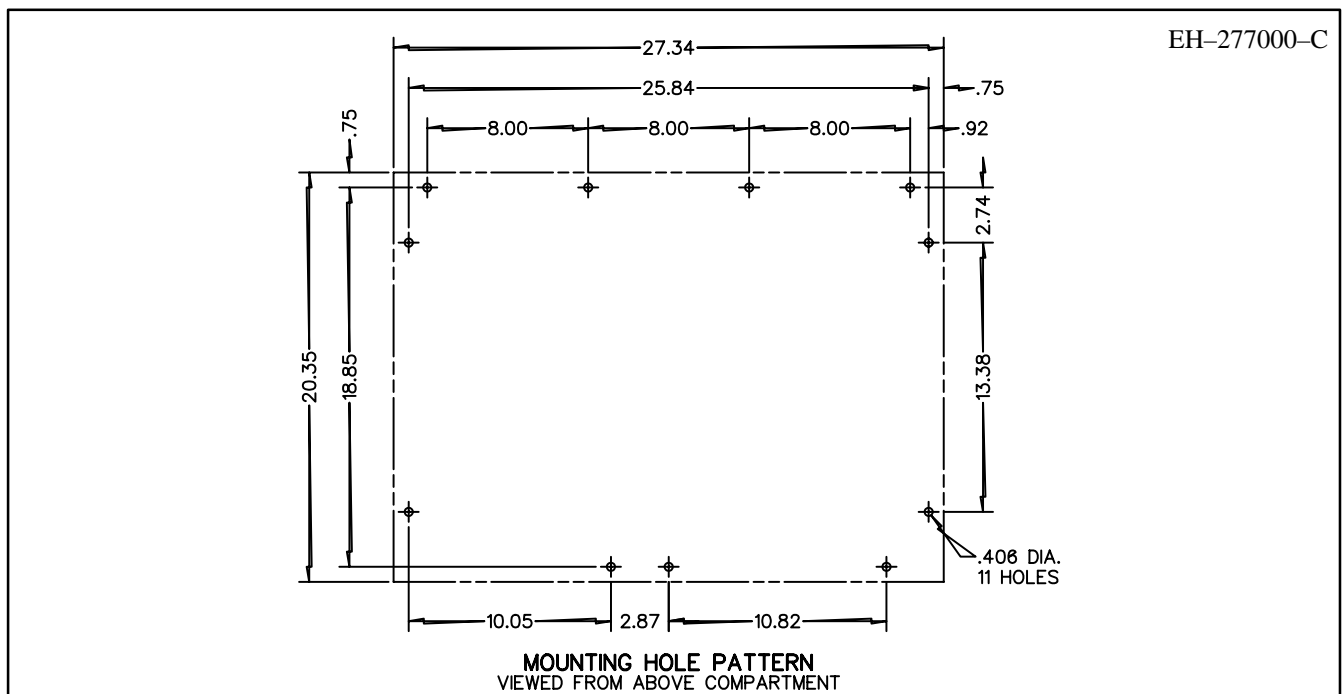


Figure 1. Mounting Pattern

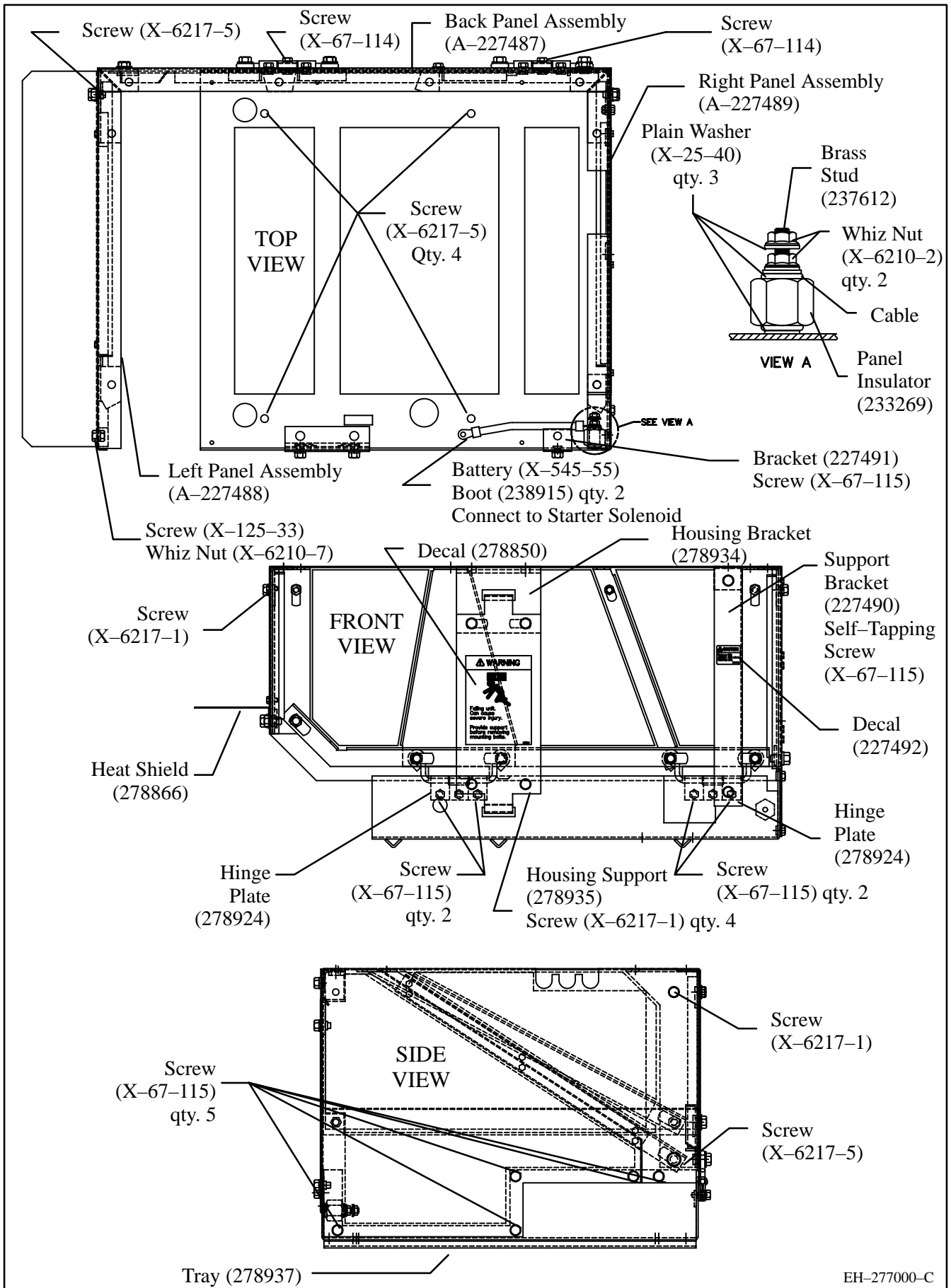


Figure 2. Installation Drawing