



Remote Start and Four-Meter Panel Kit PA-225588 7CCO/10CCO/15CCO/20CCO RV Generator Sets

Allows starting-stopping from a location remote of the generator set. Meter/gauges include DC voltmeter, engine oil pressure gauge, water temperature gauge, and generator running time hourmeter. Gauges are illuminated and the generator set comes equipped with a 6-pin connector on controller back panel for connection of the kit.



Accidental starting.

Can cause severe injury or death.

Disconnect battery cables before working on generator set (negative lead first and reconnect it last).

Accidental starting can cause severe injury or death. Disconnect battery cables (remove negative lead first and reconnect it last) to disable generator set before working on any equipment connected to generator. The generator set can be started by remote start/stop switch unless this precaution is followed.

Start – Stop/Preheat Switch: Rocker-type switch with “ON” light used to start and stop generator set.

During cold weather starts:

7CCO and 10CCO (below 50°F [10°C]),
15CCO and 20CCO (below 23°F [-5°C]),
place controller start switch in STOP/PREHEAT position for 15–20 seconds before attempting to start generator set. This provides energizing of the *glow plugs* on the 7/10kW or the *air heater coil* on the 15/20kW.

NOTE

Do not place Start – Stop/Preheat Switch in Stop/Preheat position for more than 30 seconds or damage may occur to preheat feature.

DC Voltmeter: Measures voltage of starting battery(ies). Normal battery operating range is 12–14 Volts.

Engine Oil Pressure Gauge: Measures engine oil pressure.

NOTE

During the engine break-in period, it is normal for the engine to produce higher oil pressure readings. Consult your Operator’s Manual for specific values.

Water Temperature Gauge: Measures engine coolant temperature.

Hourmeter: Records total generator set operating hours for reference in maintenance scheduling.

NOTE

If this kit is installed on a generator set already in service, the hourmeter on the controller will have accumulated hours and therefore, be different than the panel hourmeter. Be sure to use the same hourmeter each time when scheduling maintenance.

INSTALLATION

1. Disconnect battery, negative lead first.
2. Determine where in vehicle remote panel is to be mounted. This decision will be limited by the length of the wiring harness and the size (including mounting depth) of the panel.

NOTE

If additional wiring is needed, order an additional Remote Extension Harness Kit, PA-225580 15 ft. (4.6 m) or PA-225581 25 ft. (7.6 m). Do not have remote harness kits exceed 75 ft. (22.9 m) in length. See Figure 1.

See Figure 2 mounting dimensions. The minimum mounting clearance beyond the panel is 4 in. (102 mm). See Figure 3 for the panel assembly wiring.

3. Connect Remote Extension Harness to remote panel and mount panel using four screws (not supplied)
4. Connect the other end of Remote Extension Harness to back of generator set controller.
5. Reconnect battery, negative lead last. Start/stop generator set using controller switch and remote switch. Monitor gauges for proper function. STOP generator set.

Parts Listing

Description	Qty.	Part Number
Panel, Remote Start and Meter	1	A-225587
Gauge, Water Temp.	1	249440
Gauge, Oil Pressure	1	249438
Voltmeter	1	249462
Hourmeter	1	249461
Harness, Panel Wiring	1	249467
Panel, Cutout	1	225586
Switch, rocker	1	249330

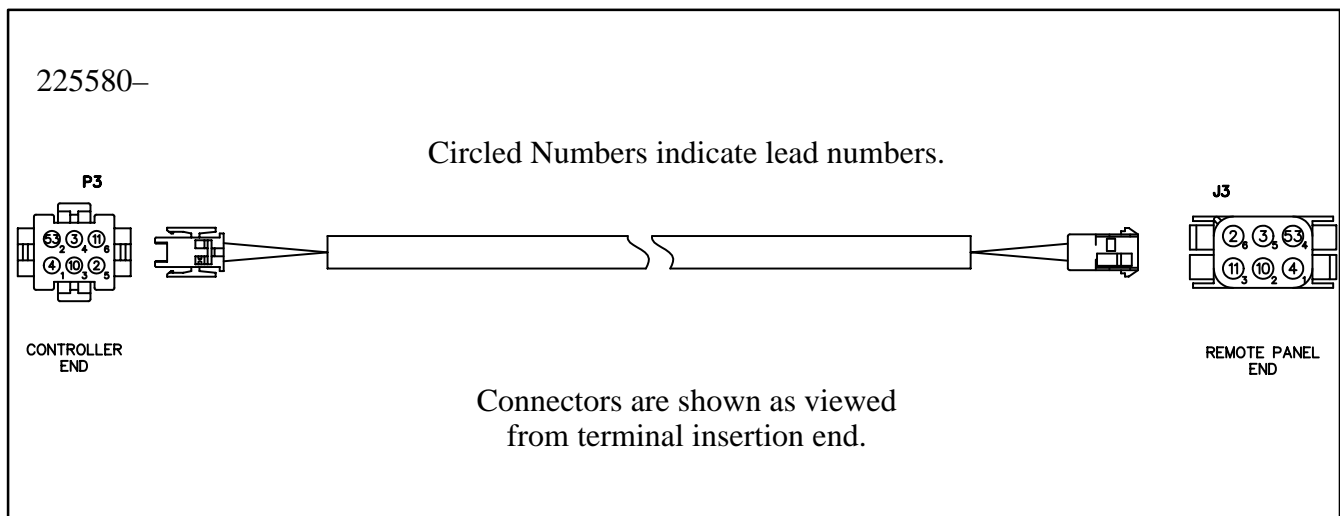


Figure 1. Remote Extension Harness

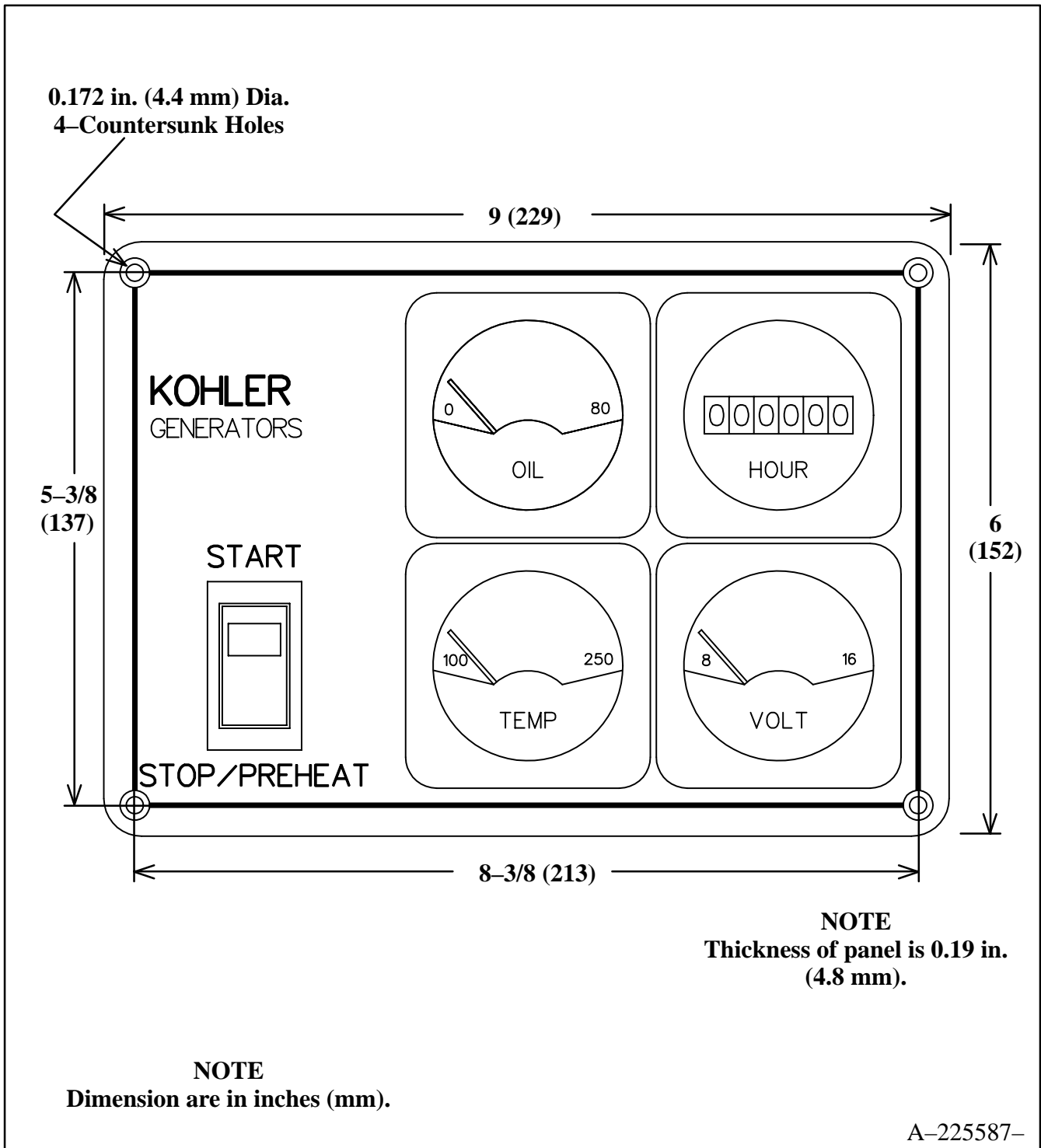
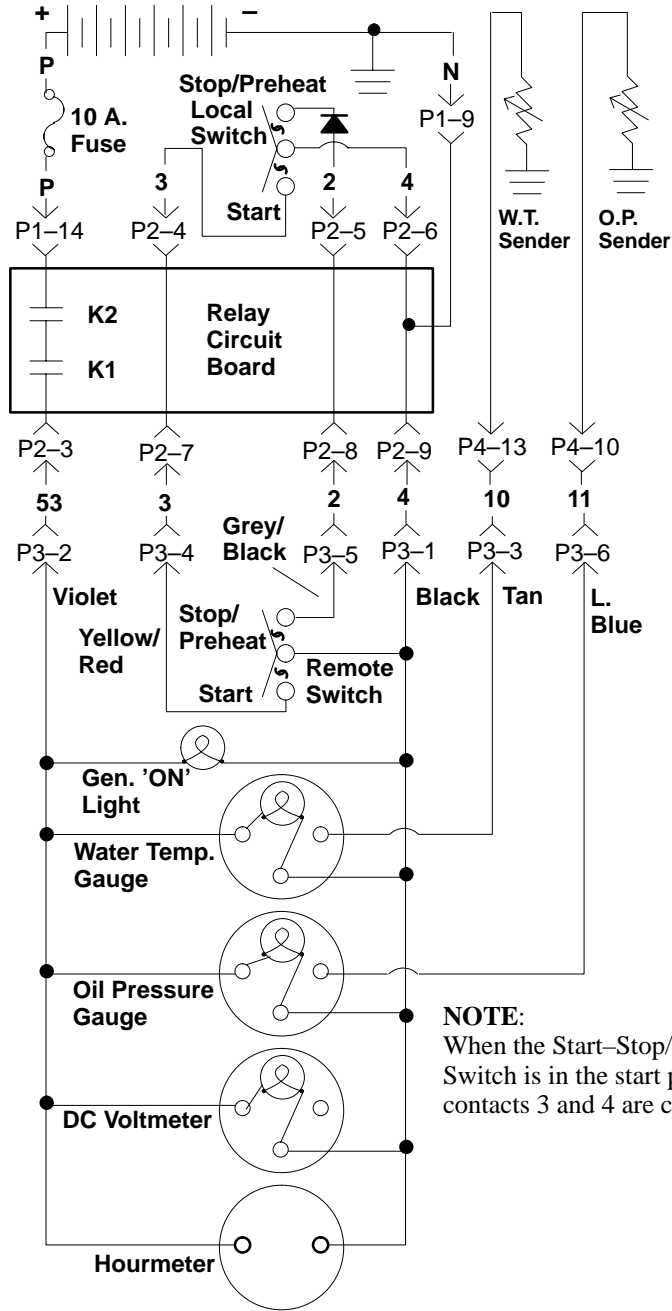
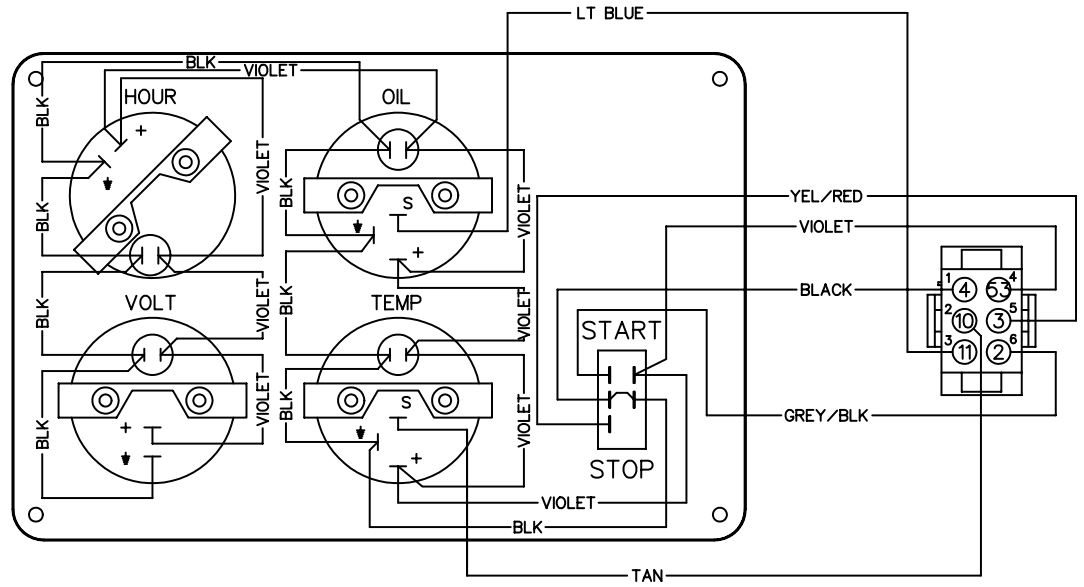


Figure 2. Meter Panel Mounting Dimensions



NOTE:
When the Start-Stop/Preheat Switch is in the start position, contacts 3 and 4 are closed.

Connector shown from pin insertion end.



Back View of Remote Start and Meter Panel

Figure 3. Electrical Connections