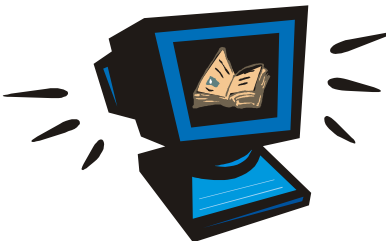


## Installation Instructions (TTs)

Sorted by TT Number

Part No.	Model	Subject	Rev.
<a href="#">TT-515</a>	3.5CM RV	Silencer, Exhaust	10/91
<a href="#">TT-516</a>	4.5CM RV	Silencer, Exhaust	10/91
<a href="#">TT-517</a>	5.5/7 kW RV	Silencer, Exhaust	-
<a href="#">TT-534</a>	7.5 kW (L654)	Fuel Conversion, LP, L-654	6/82
<a href="#">TT-536</a>	All RV Models	Remote Start Panel	-
<a href="#">TT-544</a>	7CM21-RV	Fuel Conversion, LP	-
<a href="#">TT-546</a>	L600, L654	Thermostat	-
<a href="#">TT-558</a>	4.5 kW (Twin) RV	Silencer, Exhaust	-
<a href="#">TT-621</a>	7 kW-RV	Fuel Pump Relocation	-
<a href="#">TT-622</a>	2/2.5CM-RV	Fuel Conversion, LP	6/89
<a href="#">TT-626</a>	7 kW-RV	Air Intake Duct	-
<a href="#">TT-633</a>	2/2.5CM/2.5CMZ-RV	Exhaust Silencer	6/92
<a href="#">TT-640</a>	4/8CCO/4CKM-RV	Circuit Board	-
<a href="#">TT-641</a>	7CMZ/CKM-RV	Exhaust Silencer	-
<a href="#">TT-645</a>	2.5CMZ-RV	Air Duct (Cooling)	-
<a href="#">TT-656</a>	7CMZ21-RV	Mounting Tray Kits	-
<a href="#">TT-661</a>	L654 Engine	Oil Filter	-
<a href="#">TT-666</a>	L654 Engine	Anti-icing, L-654 Engine	2/88
<a href="#">TT-677</a>	7CMZ21-RV	Fuel Conversion, LP	6/89
<a href="#">TT-679</a>	7CMZ	Switch, Replacement	2/88
<a href="#">TT-690</a>	4.5CKM-RV	Exhaust Silencer	10/89
<a href="#">TT-721</a>	3.5-7CM-RV	Controller Replacement	9/96
<a href="#">TT-745</a>	4.5CKM-RV	Fuel Pump, Solid State	8/90
<a href="#">TT-746</a>	2.5CMZ-RV	Fuel Pump, Solid State	9/90
<a href="#">TT-747</a>	All	Regulator, Voltage, Power Boost Connection	9/90
<a href="#">TT-755</a>	9/12.5/14.5CCO	Remote Start Panel	7/93
<a href="#">TT-758</a>	7CMZ/CKM-RV	Fuel Pump, Electric	2/91
<a href="#">TT-773</a>	Kohler Generators, All	End Bracket Assembly Instructions	3/95
<a href="#">TT-798</a>	RV, All	Gauge Panel, 1 Meter	2/91
<a href="#">TT-799</a>	12.5-20CCOZ/12.5-16.5CCFOZ	Circuit Breaker	12/93
<a href="#">TT-802</a>	4/5CKM-RV	RV Enclosure And Hinge/Below Floor Tray Mtg.	2/92
<a href="#">TT-812</a>	10/12 kW Gas	Block Heater	12/96
<a href="#">TT-813</a>	10/12 kW-Mobile	Remote Relay Controller	9/93
<a href="#">TT-817</a>	2CM/CMZ/2.5CMZ-RV	Oil Level Shutdown	3/91
<a href="#">TT-835</a>	4/5CKM	Tray, Mounting	7/93
<a href="#">TT-840</a>	10/12 kW Gas Mobile	Oil Drain	6/93
<a href="#">TT-867</a>	4&5 kW	Summer-Winter Air Cleaner	2/92
<a href="#">TT-868</a>	7 kW	Summer-Winter Air Cleaner	2/92
<a href="#">TT-870</a>	4/5/7 kW	Mounting, Muffler	10/92



<b>Part No.</b>	<b>Model</b>	<b>Subject</b>	<b>Rev.</b>
<a href="#">TT-872</a>	7/10/15/20 kW Diesel	Remote Start Panel Kit	6/92
<a href="#">TT-873</a>	7/10/15/20CCO RV	Panel, Remote Start And Four-meter	6/92
<a href="#">TT-874</a>	7/10/15/20CCO RV	Panel, Remote Start And Two-meter	6/9/2
<a href="#">TT-875</a>	Four-lead Single-phase	Line Circuit Breaker Kits	7/96
<a href="#">TT-884</a>	7CCKM-RV	Enclosure And Hinge Kit	9/9/2
<a href="#">TT-885</a>	7 & 10CCO RV	Gauge Sender Kit	11/95
<a href="#">TT-886</a>	15/20CCO RV	Gauge Sender Kit	11/95
<a href="#">TT-887</a>	7/10CCO RV	Separator, Fuel Water	6/93
<a href="#">TT-888</a>	15/20CCO RV	Separator, Fuel Water	7/93
<a href="#">TT-899</a>	4/5CKMR; 7CCKMR	Key Switch Kit	10/92
<a href="#">TT-904</a>	10/12 CC/CZ	Key Switch	10/92
<a href="#">TT-905</a>	15/20CCO-RV	Air Bag Mount	9/96
<a href="#">TT-913</a>	15CCO RV	Exhaust Manifold Insulation	11/93
<a href="#">TT-915</a>	10/12 kW Mobile	LP Vapor Conversion Kit	7/93
<a href="#">TT-923</a>	4/5CKM; 4/5CKMR RV/Mobile	LP Vapor Conversion	3/93
<a href="#">TT-924</a>	7CCKM/7CCKMR RV/Mobile	LP Vapor Conversion	3/93
<a href="#">TT-925</a>	4/5CKM/CKMR; 7CCKM/CCKMR	Ferrite Cage Filter	7/93
<a href="#">TT-926</a>	15/20CCO/CCOZ RV/Mobile	Block Heater	11/93
<a href="#">TT-929</a>	7/10CCO/CCOZ-RV/Mobile	Flexible Fuel Line	9/93
<a href="#">TT-936</a>	25/32 kW Marine	Powerboost Volt Regulator	11/93
<a href="#">TT-937</a>	7CCKM RV/Mobile	Antilcing	7/93
<a href="#">TT-944</a>	3.5/4.5/5.5/7/7.5 kW Gas; 5 Diesel	Volt Reg. Serv./Non-power Boost	2/93
<a href="#">TT-1004</a>	15/20CCO-RV	Remote Radiator	7/93
<a href="#">TT-1005</a>	7/10CCO-RV	Remote Radiator	7/93
<a href="#">TT-1009</a>	7/10CCO/CCOZ RV/Mobile	Block Heater	11/93
<a href="#">TT-1011</a>	15/20CCO/CCOZ-RV/Mobile	Pusher Fan	10/93
<a href="#">TT-1013</a>	15/20CCO/CCOZ-RV/Mobile	Flexible Fuel Line	9/93
<a href="#">TT-1014</a>	10/12CC/CZ Mobile	Heat Recovery (Wet)	1/99
<a href="#">TT-1015</a>	4/5CKMR/7CCKMR 3-phase Mobile	Remote Voltage Regulator	9/93
<a href="#">TT-1025</a>	10-18 kW	Flex Fuel Line	11/93
<a href="#">TT-1026</a>	All	Relay Service	3/94
<a href="#">TT-1030</a>	All	Relay Service	4/94
<a href="#">TT-1031</a>	7CCO/CCOZ	Coolant Fill Relocation	5/94
<a href="#">TT-1032</a>	3.5/4.5CM	Fuel Valve Kit (Service)	6/94
<a href="#">TT-1034</a>	4/5CKM	LP Vapor Conversion Kit	10/94
<a href="#">TT-1037</a>	7CCKM-RV	LP Liquid	1/95
<a href="#">TT-1063</a>	7CCKM	LP Gas Regulator Relocation	4/95
<a href="#">TT-1072</a>	Diesel RV, Gas/Diesel Marine	2-meter Control Panel	6/97
<a href="#">TT-1073</a>	4 Meter RV	Ctrl Panel, 4 Meter RV	6/97
<a href="#">TT-1092</a>	45CKM RV	Exhaust Kit, 45CKM RV	7/95
<a href="#">TT-1119</a>	4/5CKM/CKMR	Regulator Relocation	2/96
<a href="#">TT-1138</a>	15/20CCO	Carter Fuel Pump Kit	7/96



<b>Part No.</b>	<b>Model</b>	<b>Subject</b>	<b>Rev.</b>
<a href="#">TT-1148</a>	10/12CC/CZ/RV/RZ	Silencer & Mtg. Kit	9/96
<a href="#">TT-1154</a>	20CCO-RV	PBIIIIE Volt. Reg. Relocation Kit	11/96
<a href="#">TT-1161</a>	7/10CCO-RV	EMI/RFI Filter Kit	2/97
<a href="#">TT-1167</a>	15/20CCO-RV	EMI/RFI Filter Kit	7/97

