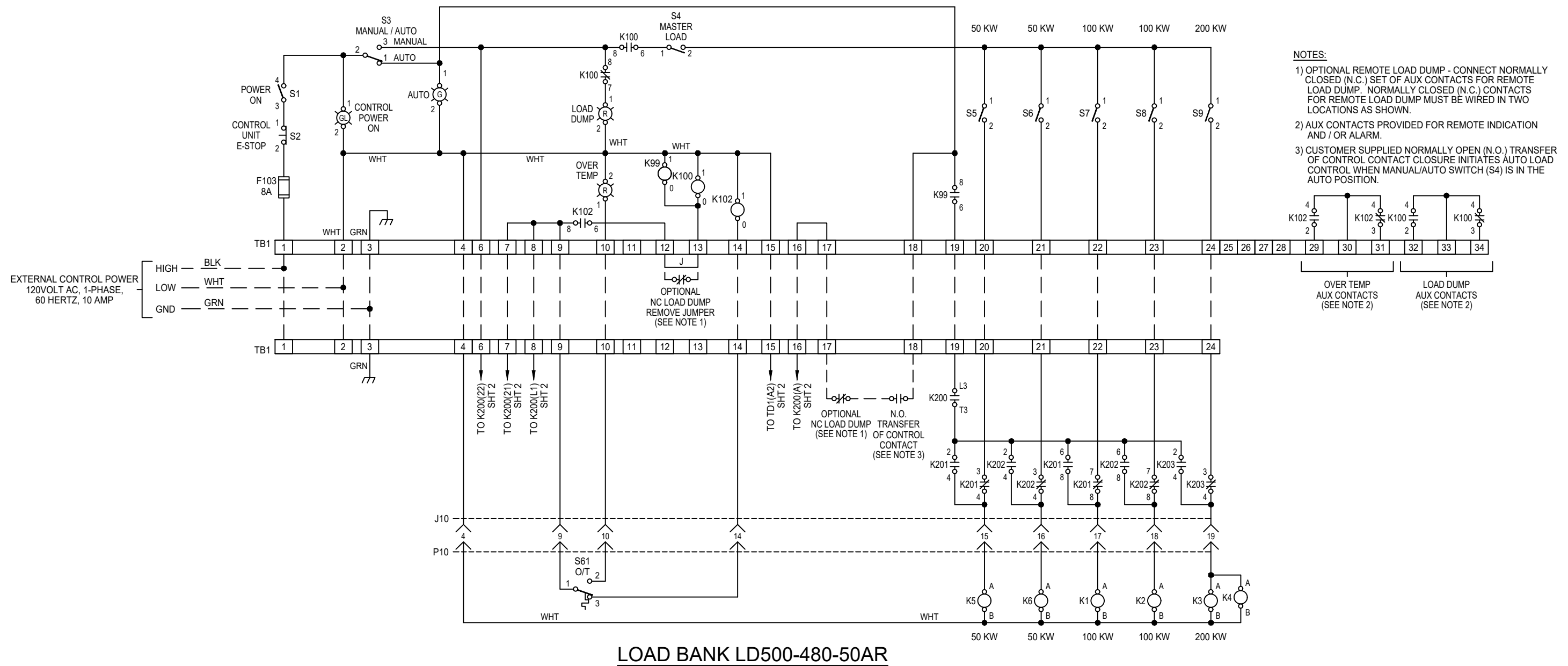
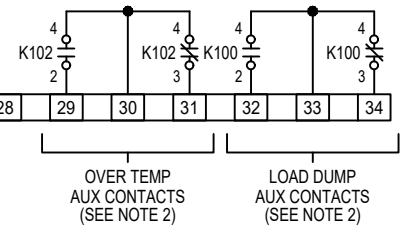


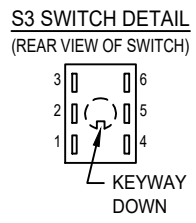
REMOTE CONTROL UNIT LD500-480-50A-CU



- NOTES:**
- OPTIONAL REMOTE LOAD DUMP - CONNECT NORMALLY CLOSED (N.C.) SET OF AUX CONTACTS FOR REMOTE LOAD DUMP. NORMALLY CLOSED (N.C.) CONTACTS FOR REMOTE LOAD DUMP MUST BE WIRED IN TWO LOCATIONS AS SHOWN.
 - AUX CONTACTS PROVIDED FOR REMOTE INDICATION AND / OR ALARM.
 - CUSTOMER SUPPLIED NORMALLY OPEN (N.O.) TRANSFER OF CONTROL CONTACT CLOSURE INITIATES AUTO LOAD CONTROL WHEN MANUAL/AUTO SWITCH (S4) IS IN THE AUTO POSITION.




- 2 - DENOTES #2 AWG HIGH TEMP 150 °C, 600 VAC INSULATED UL 3321 OR UL 3374.
 - 6 - DENOTES #6 AWG HIGH TEMP 150 °C, 600 VAC INSULATED UL 3321 OR UL 3374.
 - 8 - DENOTES #8 AWG HIGH TEMP 150 °C, 600 VAC INSULATED UL 3321 OR UL 3374.
 - 10 - DENOTES #10 AWG HIGH TEMP 150 °C, 600 VAC INSULATED UL 3321 OR UL 3374.
 - 12 - DENOTES #12 AWG HIGH TEMP 150 °C, 600 VAC INSULATED UL 3321 OR UL 3374.
 - 2 - DENOTES #2 AWG BLACK WIRE, UL TYPE 1015 (CSA TYPE TEW OR AWM), WIRE TYPE MTW-THHN, 105 °C, 600 VAC INSULATED.
 - 6 - DENOTES #6 AWG BLACK WIRE, UL TYPE 1015 (CSA TYPE TEW OR AWM), WIRE TYPE MTW-THHN, 105 °C, 600 VAC INSULATED.
 - 8 - DENOTES #8 AWG BLACK WIRE, UL TYPE 1015 (CSA TYPE TEW OR AWM), WIRE TYPE MTW-THHN, 105 °C, 600 VAC INSULATED.
 - 10 - DENOTES #10 AWG BLACK WIRE, UL TYPE 1015 (CSA TYPE TEW OR AWM), WIRE TYPE MTW-THHN, 105 °C, 600 VAC INSULATED.
 - 12 - DENOTES #12 AWG BLACK WIRE, UL TYPE 1015 (CSA TYPE TEW OR AWM), WIRE TYPE MTW-THHN, 105 °C, 600 VAC INSULATED.
- ALL UNMARKED WIRE TO BE #16 AWG BLACK, UL TYPE 1015 (CSA TYPE TEW OR AWM), WIRE TYPE MTW-THHN, 105 °C, 600 VAC INSULATED.
ALL WIRE TO BE BLACK UNLESS SPECIFIED.



GENERAL NOTES:

A. UNLESS OTHERWISE NOTED:
1. ALL DIMENSIONS ARE IN INCHES.

THIS DRAWING IS PROPERTY OF LOAD BANKS DIRECT AND SHALL REMAIN SO WHILE IN USER'S POSSESSION. THE TECHNOLOGY SHOWN HERE IS STRICTLY PROPRIETARY AND IS NOT TO BE DISCLOSED TO ANY 3RD PARTY WITHOUT LOAD BANKS DIRECT PRIOR CONSENT.

 Load Banks Direct www.LoadBanksDirect.com			
SCHEMATIC, LOAD BANK			
DWG. NO. LD500-480-50AR-W		REV. -	SHEET 1 of 3
DRAWN BY REK	CHK'D BY MMP	DATE 9-4-18	SIZE D