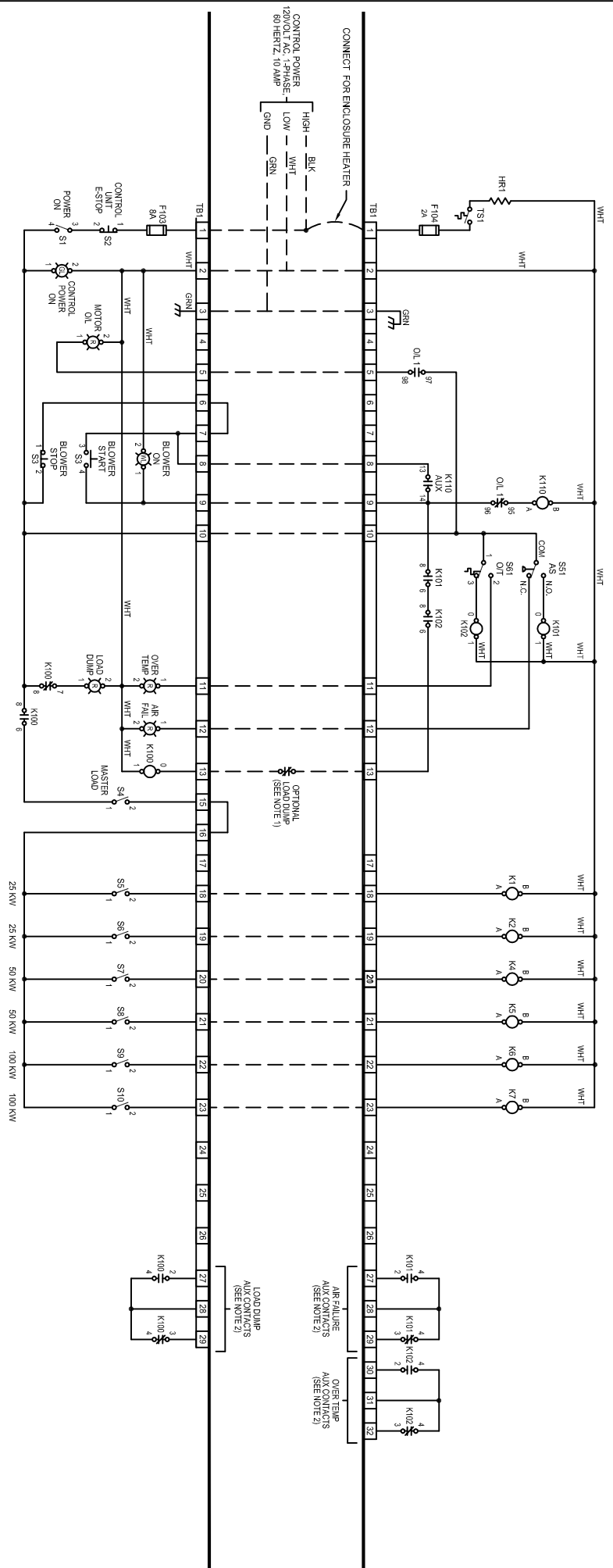


LOAD BANK LS350-480-25

NOTES:
 1) OPTIONAL REMOTE LOAD DUMP - CONNECT NORMALLY CLOSED (N.C.) SET OF AUX CONTACTS FOR REMOTE LOAD DUMP.
 2) AUX CONTACTS PROVIDED FOR REMOTE INDICATION AND/OR ALARM.



REMOTE CONTROL UNIT LS350-480-25-CU

- 2 - DENOTES #2 AVG HIGH TEMP 150 °C, 600 VAC INSULATED, UL 3321 OR UL 3374.
- 3 - DENOTES #6 AVG HIGH TEMP 150 °C, 600 VAC INSULATED, UL 3321 OR UL 3374.
- 4 - DENOTES #6 AVG HIGH TEMP 150 °C, 600 VAC INSULATED, UL 3321 OR UL 3374.
- 5 - DENOTES #10 AVG HIGH TEMP 150 °C, 600 VAC INSULATED, UL 3321 OR UL 3374.
- 6 - DENOTES #2 AVG BLACK WIRE, UL TYPE 1015 (CSA TYPE TEV OR AMW), WIRE TYPE MTW-THHN, 105 °C, 600 VAC INSULATED.
- 7 - DENOTES #6 AVG BLACK WIRE, UL TYPE 1015 (CSA TYPE TEV OR AMW), WIRE TYPE MTW-THHN, 105 °C, 600 VAC INSULATED.
- 8 - DENOTES #10 AVG BLACK WIRE, UL TYPE 1015 (CSA TYPE TEV OR AMW), WIRE TYPE MTW-THHN, 105 °C, 600 VAC INSULATED.
- 9 - DENOTES #12 AVG BLACK WIRE, UL TYPE 1015 (CSA TYPE TEV OR AMW), WIRE TYPE MTW-THHN, 105 °C, 600 VAC INSULATED.
- ALL UNMARKED WIRE TO BE #16 AVG BLACK, UL TYPE 1015 (CSA TYPE TEV OR AMW), WIRE TYPE MTW-THHN, 105 °C, 600 VAC INSULATED.

GENERAL NOTES:
 A. UNLESS OTHERWISE NOTED:
 1. ALL DIMENSIONS ARE IN INCHES.
 THIS DRAWING IS PROPERTY OF LOAD BANKS DIRECT AND SHALL REMAIN SO WHILE IN USERS POSSESSION. THE TECHNOLOGY SHOWN HERE IS STRICTLY PROPRIETARY AND IS NOT TO BE DISCLOSED TO ANY 3RD PARTY WITHOUT LOAD BANKS DIRECT PRIOR CONSENT.

		TEXT	DATE	REV	SHEET
		LS350-480-25-W	-	-	1 OF 2
DESIGNED BY	CHECKED BY	DATE	SIZE		
JJF	MMP	10-09-15	D		