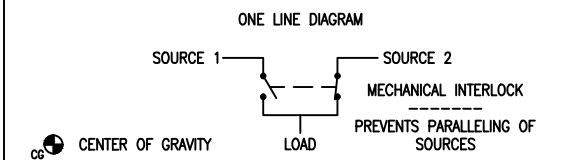


ATC3C3X30600XRU  
 AUTOMATIC OPEN TRANSFER CONTACTOR SWITCH  
 ATC-300+ CONTROL, 3 POSITION CONTACTOR  
 FIXED MOUNTED  
 3 POLE, 600 AMPS  
 480/277V 60HZ, 3 PHASE, 4 WIRE  
 TYPE-3R ENCLOSURE, UL 1008 LISTED

- FEATURES INCLUDED:
- 1A TIME DELAY NORMAL TO EMERGENCY ADJ 0-1800 sec
  - 2A TIME DELAY ENGINE START ADJ 0-120 sec
  - 3A TIME DELAY EMERGENCY TO NORMAL ADJ 0-1800 sec
  - 4A TIME DELAY ENGINE COOL-OFF ADJ 0-1800 sec
  - 5H EMERGENCY (S2) SENSING PHASE REVERSAL
  - 5J EMERGENCY (S2) SENSING ALL PHASE UNDERVOLTAGE/UNDER FREQ
  - 5K EMERGENCY (S2) SENSING ALL PHASE OVERVOLTAGE/OVER FREQ
  - 5L EMERGENCY (S2) SENSING ALL PHASE VOLTAGE UNBALANCE
  - 6B ENGINE TEST PUSHBUTTON
  - 7A TIME DELAY ENGINE FAIL ADJ 0-6 sec
  - 8C TIME DELAY BYPASS EMERGENCY TO NORMAL
  - 8D TIME DELAY BYPASS NORMAL TO EMERGENCY
  - 12C LED INDICATION NORMAL (S1) CONNECTED
  - 12D LED INDICATION EMERGENCY (S2) CONNECTED
  - 12G LED INDICATION NORMAL (S1) AVAILABLE
  - 12H LED INDICATION EMERGENCY (S2) AVAILABLE
  - 14G AUX RELAY CONTACTS NORMAL (S1) AVAILABLE 2 FORM C
  - 14H AUX RELAY CONTACTS EMERGENCY (S2) AVAILABLE 2 FORM C
  - 15E POSITION INDICATION CONTACT NORMAL (S1) AVAILABLE 1 FORM C
  - 15F POSITION INDICATION CONTACT EMERGENCY (S2) AVAILABLE 1 FORM C
  - 23K PLANT EXERCISER 7/14/28 DAY LOAD/NO LOAD 0-600 min
  - 26D GO TO EMERGENCY (S2) INPUT
  - 26H NORMAL (S1) SENSING PHASE REVERSAL
  - 26J NORMAL (S1) SENSING ALL PHASE UNDERVOLTAGE/UNDER FREQ
  - 26K NORMAL (S1) SENSING ALL PHASE OVERVOLTAGE/OVER FREQ
  - 26L NORMAL (S1) SENSING ALL PHASE VOLTAGE UNBALANCE
  - 32A TIME DELAY NEUTRAL ADJUSTABLE 0 - 120 sec
  - 35A PRETRANSFER SIGNAL CONTACTS 1 FORM C
  - 42 IBC/CBC SEISMIC QUALIFIED
  - 49C MULTI-TAP VOLTAGE TRANSFORMER

REQUIRED FOR SEISMIC, RECOMMENDED FOR ALL APPLICATIONS:  
 USE 4, 5/16-13 UNC GRADE 5 OR BETTER HEX HEAD BOLTS AND WASHERS.  
 THESE BOLTS ARE TO BE TORQUED TO 75 FT. LBS. (102 NM).

- NOTES:
- 1 APPROXIMATE SHIPPING WEIGHT = 600 LBS [272 KG]
  - 2 DIMENSIONS SHOWN IN INCHES [MILLIMETERS]
  - 3 AUTOMATIC & NON-AUTOMATIC CONTROLS PROVIDED BASED ON CUSTOMER ORDER INFORMATION.
  - 4 TRANSFORMER PACK INCLUDED WITH ALL SWITCHES
  - 5 FOR SWITCHED NEUTRAL APPLICATIONS, CONNECT TO TERMINALS MARKED 'NN', 'EN', AND 'LN'. NEUTRAL ASSEMBLY WILL NOT BE PROVIDED.

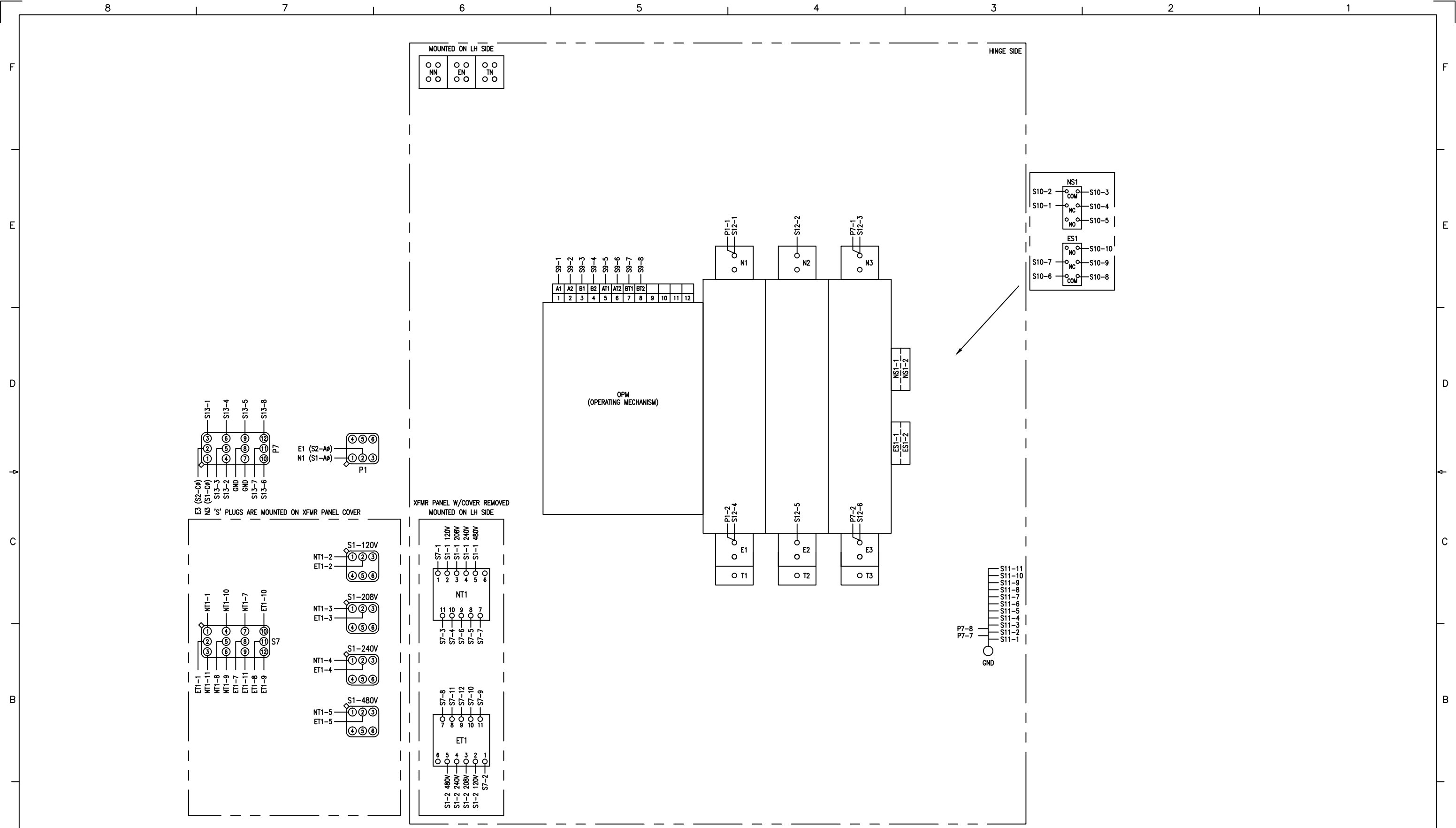


REVISION	1	

DFTR		DATE	THE INFORMATION ON THIS DOCUMENT WAS CREATED BY EATON CORPORATION. IT WAS DISCLOSED IN CONFIDENCE AND IS ONLY TO BE USED FOR THE PURPOSE IN WHICH IT WAS SUPPLIED.	
APPD		DATE	<b>EATON</b> TITLE AUTOMATIC OPEN TRANSFER   CONTACTOR SWITCH 480V 3 POSITION   40-1200 AMP   ATC-300+ CONTROLLER	
FEDERAL ID NO. 88725	S.O.			
PRODUCT CODE AT	REVISION 1	DESIGNATION	TYPE ATC3C3X30600XRU	OUTLINE
			G.O. -	DWG ~
				01
				SHEET 1 OF 5







REVISION	1	

DFTR		DATE	THE INFORMATION ON THIS DOCUMENT WAS CREATED BY EATON CORPORATION. IT WAS DISCLOSED IN CONFIDENCE AND IS ONLY TO BE USED FOR THE PURPOSE IN WHICH IT WAS SUPPLIED.	
APPD		DATE		
FEDERAL ID NO. 88725		S.O.	TITLE AUTOMATIC OPEN TRANSFER   CONTACTOR SWITCH 480V 3 POSITION   40-1200 AMP   ATC-300+ CONTROLLER	
PRODUCT CODE AT		REVISION 1	DESIGNATION	TYPE ATC3C3X30600XRU DIAGRAM G.O. - DWG  SHEET 4 OF 5

