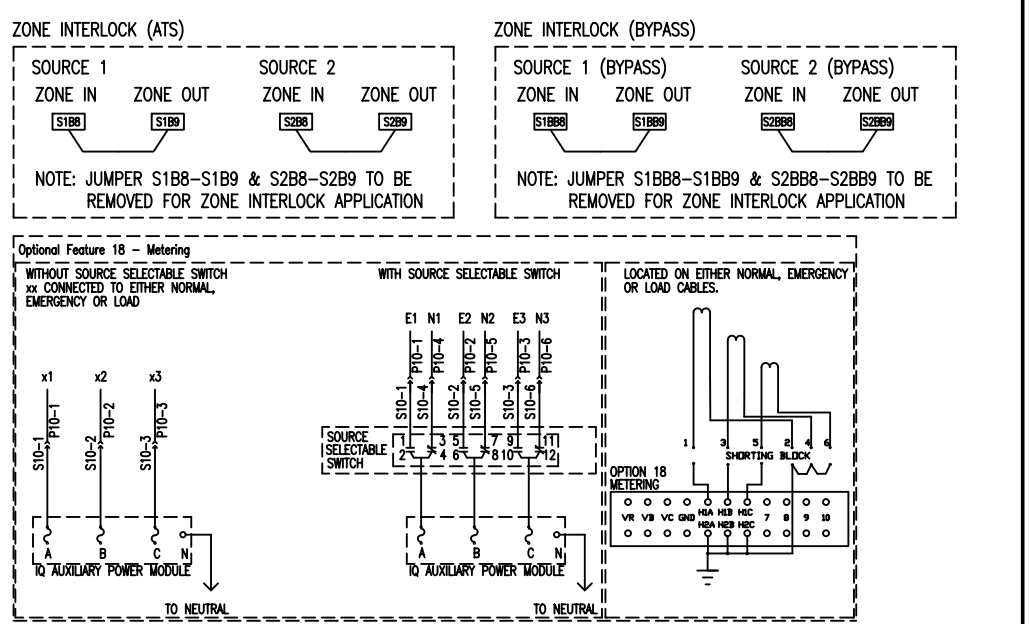
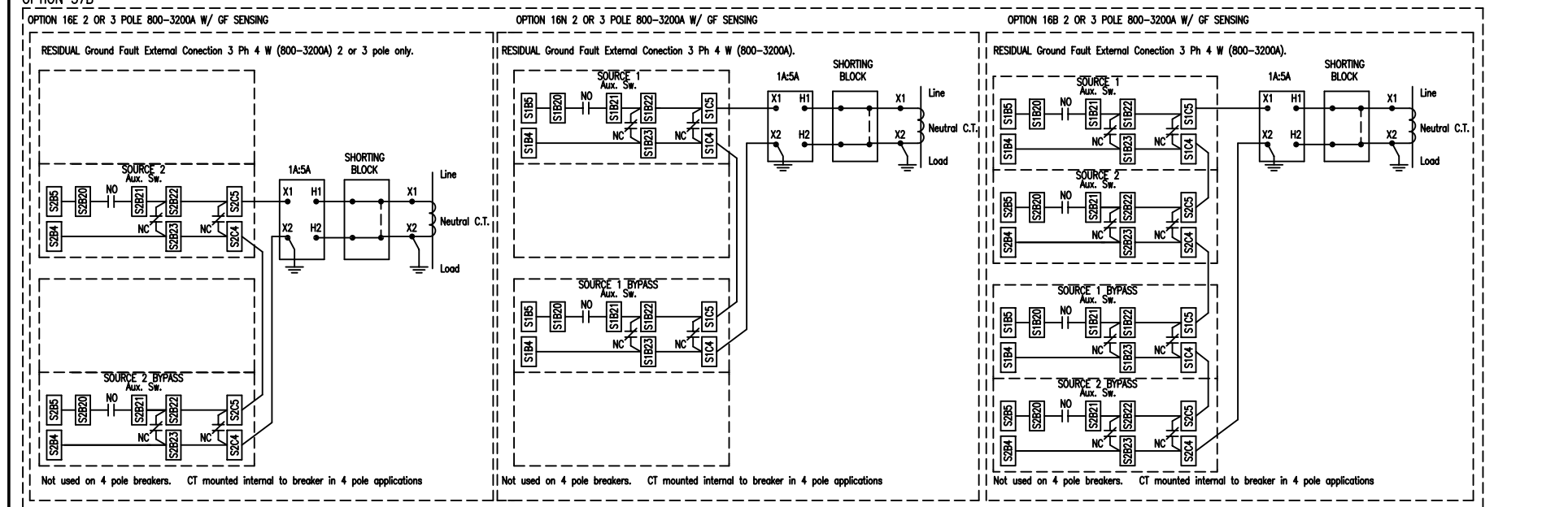
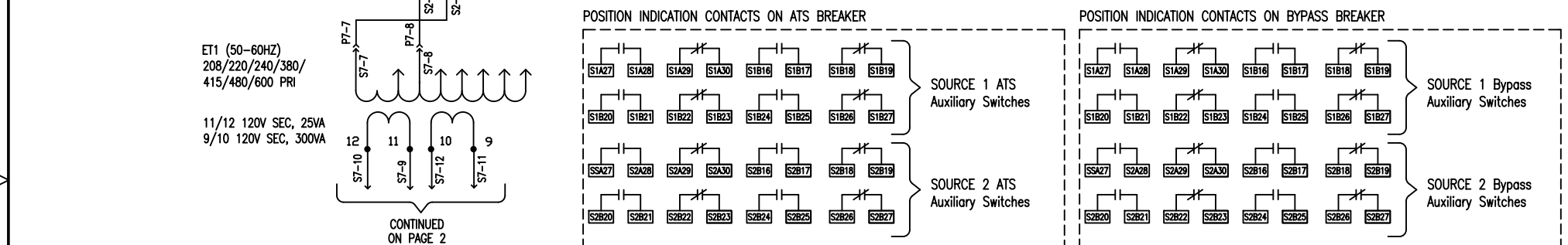
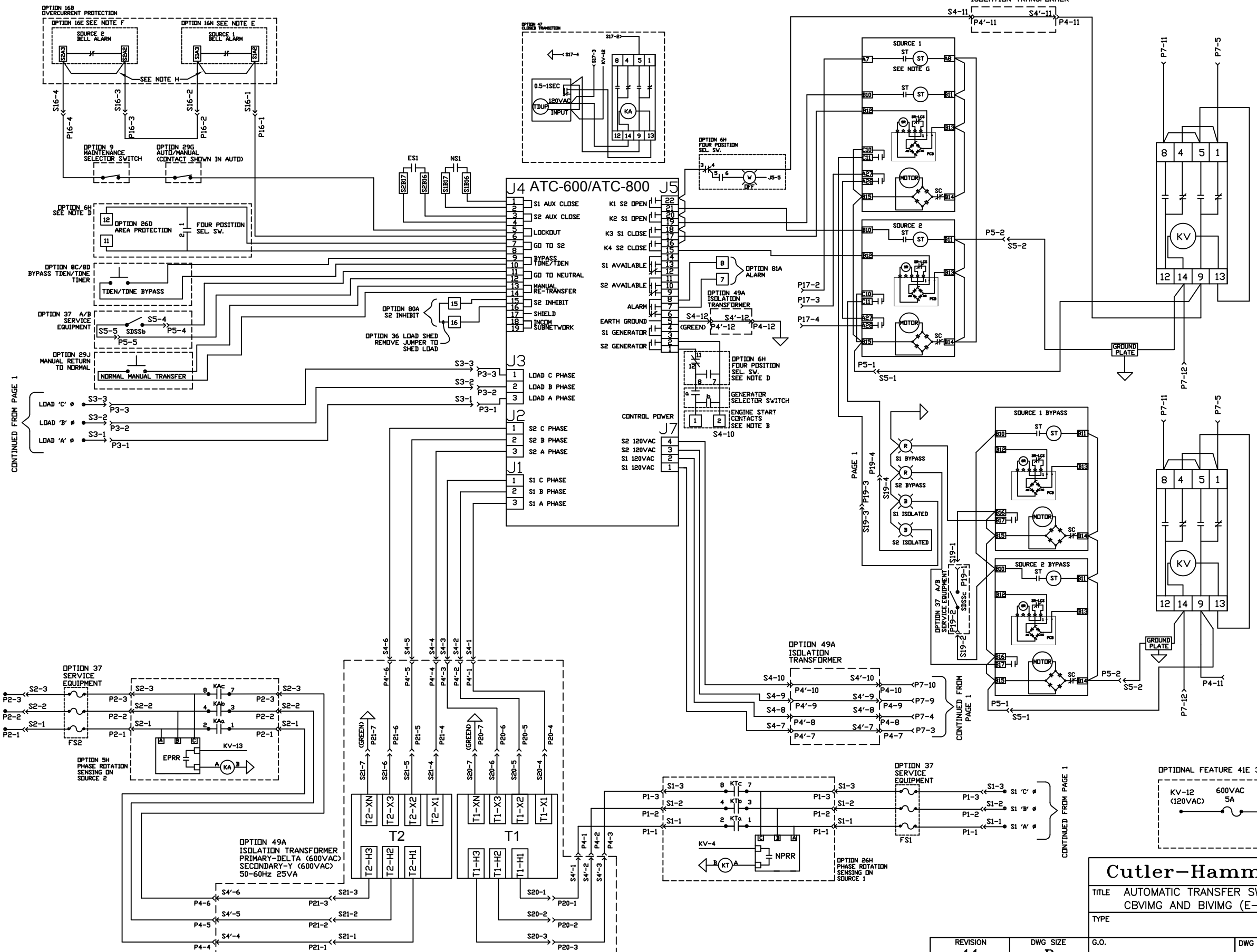


LEGEND & NOTES	
	CLOSED COIL
	COMMON REFERENCE
	CURRENT TRANSFORMER LOCATED PER 18A OPTION
	EMERGENCY ATS TERMINAL BLOCK
	FEMALE CONNECTION
	FIXED MOUNT SWITCHING DEVICE
	FUSE
	INDICATOR LIGHT
	MALE CONNECTION
	MECHANICAL INTERLOCK
	MULTITAP TRANSFORMER
	NEUTRAL G.F. SENSOR
	N.C. SELECTOR SWITCH
	N.C. CONTACT
	N.O. CONTACT
	N.O. PUSHBUTTON
	N.O. SELECTOR SWITCH
	NORMAL ATS TERMINAL BLOCK
	OPEN COIL
	RELAY OR TIMER, 120VAC
	TERMINAL BLOCK



<b>GS-2251</b> REVISION 1. GS-2251-001 HEG 06/09/2006 LATHROP PRINCE	2. GS-2251-002 HEG 06/09/2006 LATHROP PRINCE	3. GS-2251-003 HEG 06/09/2006 LATHROP PRINCE	4. GS-2251-004 HEG 06/09/2006 LATHROP PRINCE	5. GS-2251-005 HEG 06/09/2006 LATHROP PRINCE	6. GS-2251-006 HEG 06/09/2006 LATHROP PRINCE	7. GS-2251-007 HEG 06/09/2006 LATHROP PRINCE	8. GS-2251-008 HEG 06/09/2006 LATHROP PRINCE	9. GS-2251-009 HEG 06/09/2006 LATHROP PRINCE	10. GS-2251-010 HEG 06/09/2006 LATHROP PRINCE	11. GS-2251-011 HEG 06/09/2006 LATHROP PRINCE	THE INFORMATION ON THIS DOCUMENT IS CREATED BY CUTLER-HAMMER. IT IS DISCLOSED IN CONFIDENCE AND IS ONLY TO BE USED FOR THE PURPOSE IN WHICH IT IS SUPPLIED.	DFTR INFANTOZZI DATE 10/14/2004	DATE 10/14/2004	<b>Cutler-Hammer</b> TITLE AUTOMATIC TRANSFER SWITCH CBVIMG AND BIVIMG (E-H) DRAWOUT BYPASS ISOLATION ATS	TYPE WIRE DIAGRAM	DWG TYPE WIRE DIAGRAM
												APPD MARTIN DATE 10/14/2004	APPD PRINCE DATE 10/14/2004	REVISION 11	DWG SIZE B	G.O.

SYSTEM SHOWN DEENERGIZED WITH ALL SWITCHING DEVICES OPENED



**LEGEND & NOTES**

EPRR - EMERGENCY PHASE ROTATION RELAY  
 ESx - EMERGENCY AUXILIARY SWITCH  
 ETx - EMERGENCY TRANSFORMER  
 Ex - EMERGENCY CUSTOMER CONNECTION  
 NPRR - NORMAL PHASE ROTATION RELAY  
 NSx - NORMAL AUXILIARY SWITCH  
 NTx - NORMAL TRANSFORMER  
 Nx - NORMAL CUSTOMER CONNECTION  
 KV - VOTING RELAY  
 Px - FEMALE CONNECTOR  
 Sx - MALE CONNECTOR  
 SDSS - SERVICE DISCONNECT SELECTOR SWITCH  
 SDSSx - SDSS CONTACT  
 Tx - LOAD CUSTOMER CONNECTION  
 FSx - FUSE HOLDER  
 SR - SPRING RELEASE  
 ST - SHUNT TRIP

NOTE A: PHASE CONNECTIONS TO 10 ARE ON LOAD SIDE OF FSx IF SERVICE EQUIPMENT OTHERWISE, CONNECTED TO MAIN TERMINALS

NOTE B: TERMINALS ARE TO BE CONNECTED TO REMOVE START CONTACT FROM GENERATOR. CONNECT TO J5-1 AND J5-2 ON CONTROLLER

NOTE C: NEUTRAL SWITCHED ON 4 POLE DEVICE

NOTE D: TERMINALS 1, 2, 11 AND 12 SUPPLIED WITH OPTION 6H ONLY

NOTE E: OPTION 16N- JUMPER FROM P16-2 TO P16-3 IS REMOVED. WIRE FROM P16-4 MOVED TO P16-2

NOTE F: OPTION 16E- JUMPER FROM P16-2 TO P16-3 IS REMOVED. WIRE FROM P16-1 MOVED TO P16-3

NOTE G: SUPPLIED WITH CLOSED TRANSITION ONLY

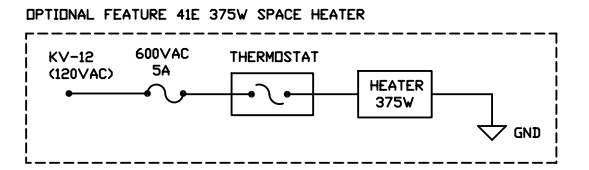
NOTE H: JUMPERS ADDED WHEN OPTION 16 NOT INSTALLED AND OPTION 9 AND/OR 29G ARE INSTALLED

OPTION 6H  
FOUR POSITION SEL. SW.

	1	2	3	4	5	6	7	8	9	10	11	12
TEST	X	X	X	X	X	X	X	X	X	X	X	X
AUTO		X										X
OFF				X					X	X		
ENG. RUN	X			X	X	X	X					

GENERATOR SEL. SW.

	a	b
AUTO	X	
OFF		
ENG. RUN		X



**Cutler-Hammer** BEAVER, PA

TITLE AUTOMATIC TRANSFER SWITCH  
 CBVIMG AND BIVIMG (E-H) DRAWOUT BYPASS ISOLATION ATS

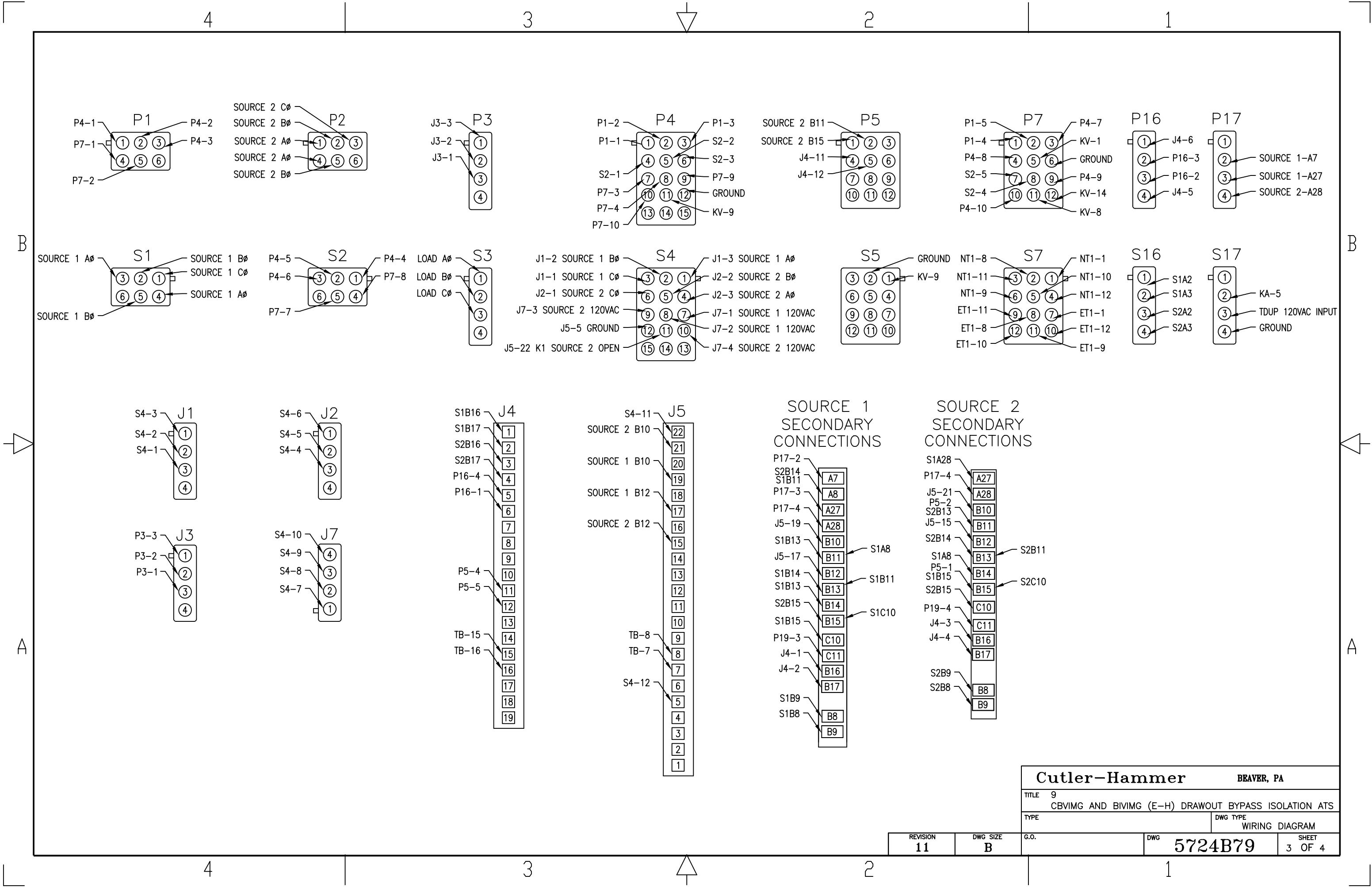
TYPE \_\_\_\_\_ DWG TYPE WIRING DIAGRAM

REVISION 11 DWG SIZE B G.O. DWG 5724B79 SHEET 2 OF 4

CONTINUED FROM PAGE 1

CONTINUED FROM PAGE 1

CONTINUED FROM PAGE 1



<b>Cutler-Hammer</b>		<b>BEAVER, PA</b>	
TITLE 9 CBVIMG AND BIVIMG (E-H) DRAWOUT BYPASS ISOLATION ATS			
TYPE		DWG TYPE WIRING DIAGRAM	
REVISION <b>11</b>	DWG SIZE <b>B</b>	G.O.	DWG <b>5724B79</b>
			SHEET 3 OF 4

