

ATC8C2X30100XSU

AUTOMATIC OPEN TRANSFER CONTACTOR SWITCH  
 ATC-800 CONTROL, 2 POSITION CONTACTOR  
 FIXED MOUNTED  
 3 POLE, 100 AMPS  
 480/277V 60HZ, 3 PHASE, 4 WIRE  
 TYPE-1 ENCLOSURE, UL 1008 LISTED

FEATURES INCLUDED:

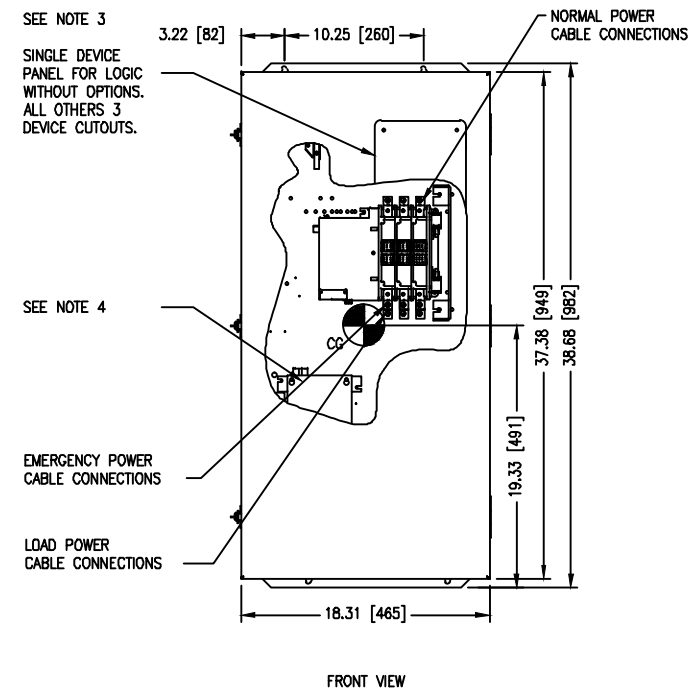
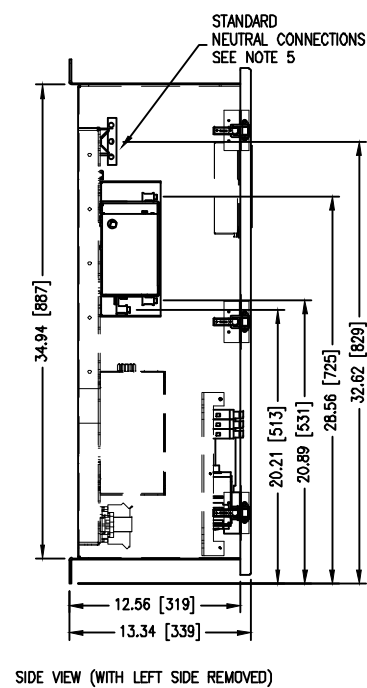
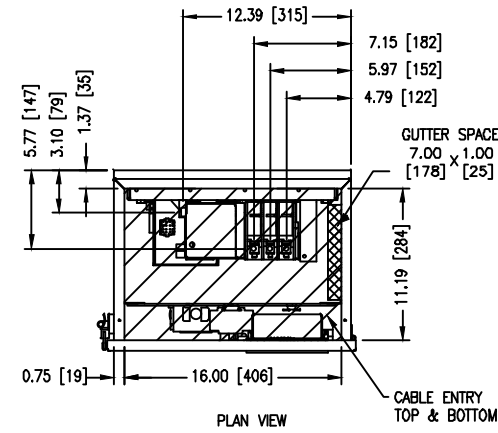
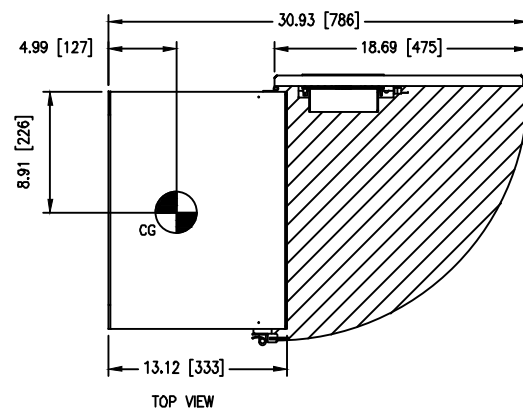
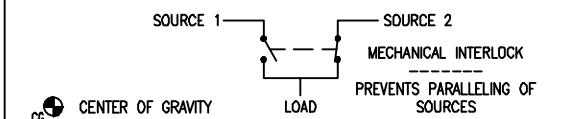
- 1A TIME DELAY NORMAL TO EMERGENCY ADJ 0-1800 sec
- 2A TIME DELAY ENGINE START ADJ 0-120 sec
- 3A TIME DELAY EMERGENCY TO NORMAL ADJ 0-1800 sec
- 4A TIME DELAY ENGINE COOL-OFF ADJ 0-1800 sec
- 5H EMERGENCY (S2) SENSING PHASE REVERSAL
- 5J EMERGENCY (S2) SENSING ALL PHASE UNDERVOLTAGE/UNDER FREQ
- 5K EMERGENCY (S2) SENSING ALL PHASE OVERVOLTAGE/OVER FREQ
- 5L EMERGENCY (S2) SENSING ALL PHASE VOLTAGE UNBALANCE & PHASE LOSS
- 6B ENGINE TEST PUSHBUTTON
- 6H MAINTAINED 4 POSITION TEST SWITCH
- 7A TIME DELAY ENGINE FAIL ADJ 0-6 sec
- 8C TIME DELAY BYPASS EMERGENCY TO NORMAL
- 8D TIME DELAY BYPASS NORMAL TO EMERGENCY
- 9B MAINTENANCE SELECTOR SWITCH ISOLATES ELEC. OP.
- 10B SOURCE SELECTOR-UTILITY TO UTILITY OR UTILITY TO GENERATOR
- 10D SOURCE SELECTOR-GENERATOR TO GENERATOR
- 12C LED INDICATION NORMAL (S1) CONNECTED
- 12D LED INDICATION EMERGENCY (S2) CONNECTED
- 12G LED INDICATION NORMAL (S1) AVAILABLE
- 12H LED INDICATION EMERGENCY (S2) AVAILABLE
- 14E AUX RELAY CONTACTS NORMAL (S1) AVAILABLE 1 FORM C
- 14F AUX RELAY CONTACTS EMERGENCY (S2) AVAILABLE 1 FORM C
- 15E POSITION INDICATION CONTACT NORMAL (S1) AVAILABLE 1 FORM C
- 15F POSITION INDICATION CONTACT EMERGENCY (S2) AVAILABLE 1 FORM C
- 23J PLANT EXERCISER 7 DAY LOAD/NO LOAD 0-600 min
- 26D GO TO EMERGENCY (S2) INPUT
- 26H NORMAL (S1) SENSING PHASE REVERSAL
- 26J NORMAL (S1) SENSING ALL PHASE UNDERVOLTAGE/UNDER FREQ
- 26K NORMAL (S1) SENSING ALL PHASE OVERVOLTAGE/OVER FREQ
- 26L NORMAL (S1) SENSING ALL PHASE VOLTAGE UNBALANCE & PHASE LOSS
- 29G SELECTABLE AUTOMATIC OR NON-AUTOMATIC OPERATION
- 29J SELECTABLE AUTOMATIC OR NON-AUTOMATIC RETRANSFER w/FAILSAFE
- 32F IN-PHASE TRANSITION
- 35A PRETRANSFER SIGNAL CONTACTS 1 FORM C
- 41A 100 WATT SPACE HEATER WITH THERMOSTAT
- 42 IBC/CBC SEISMIC QUALIFIED
- 45A LOAD SEQUENCING CONTACTS (1)
- 48F COMMUNICATIONS MODBUS
- 48R REMOTE ANNUNCIATOR
- 49C MULTI-TAP VOLTAGE TRANSFORMER
- 51D1 50KA SURGE DEVICE NORMAL (S1)
- 81A GENERAL ALARM INDICATION CONTACT

REQUIRED FOR SEISMIC, RECOMMENDED FOR ALL APPLICATIONS:  
 USE 4, 1/2-13 UNC GRADE 5 OR BETTER HEX HEAD BOLTS AND WASHERS.  
 THESE BOLTS ARE TO BE TORQUED TO 75 FT. LBS. (102 NM).

NOTES:

- 1 APPROXIMATE SHIPPING WEIGHT = 156 LBS [71 KG]
- 2 DIMENSIONS SHOWN IN INCHES [MILLIMETERS]
- 3 AUTOMATIC & NON-AUTOMATIC CONTROLS PROVIDED BASED ON CUSTOMER ORDER INFORMATION.
- 4 TRANSFORMER PACK IS NOT INCLUDED WITH 240/120V, 1 PHASE OR 208/120V SYSTEMS.
- 5 FOR SWITCHED NEUTRAL APPLICATIONS, CONNECT TO TERMINALS MARKED 'NN', 'EN', AND 'LN'. NEUTRAL ASSEMBLY WILL NOT BE PROVIDED.

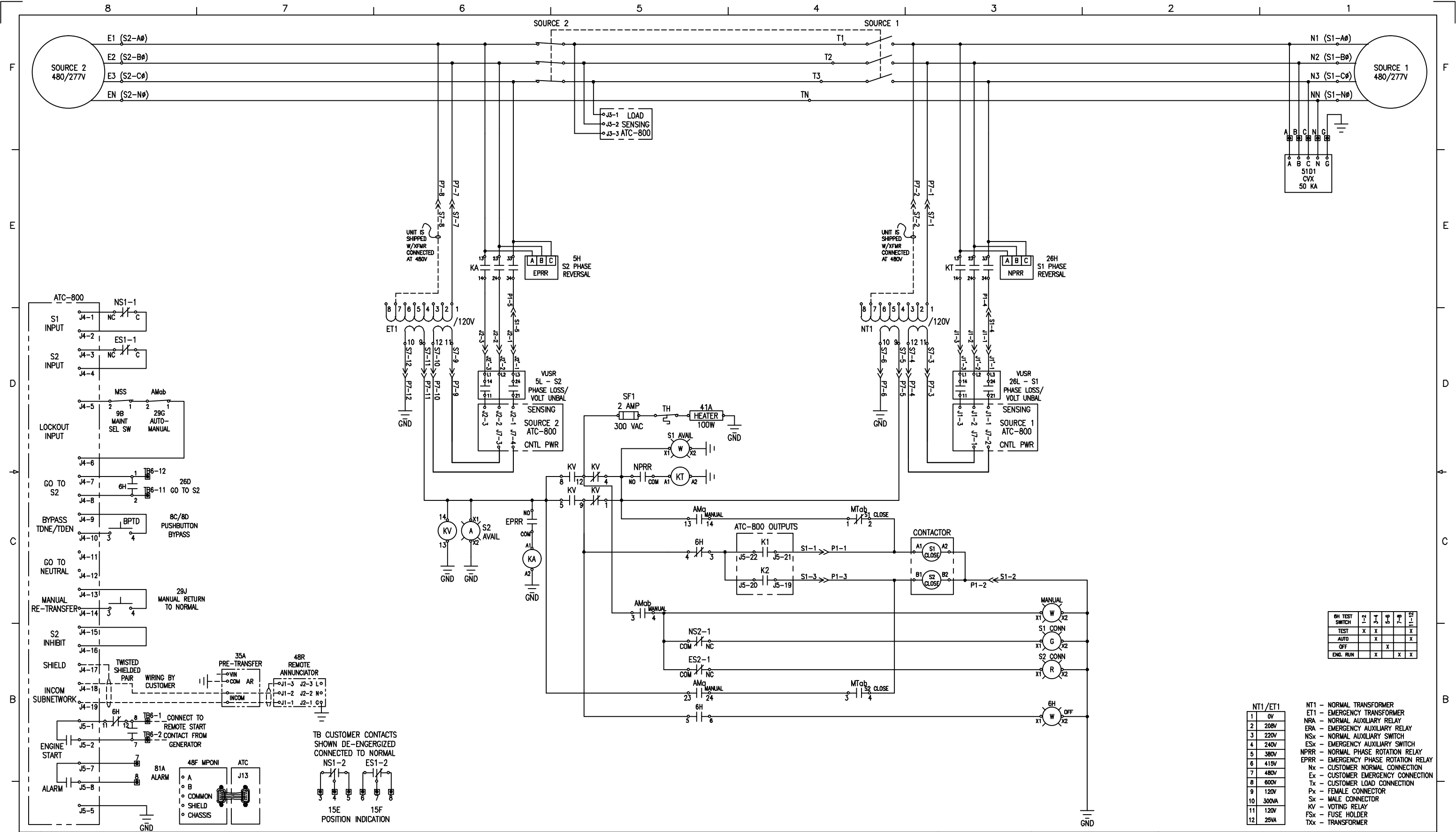
ONE LINE DIAGRAM



01 REVISION

DFTR JODY GRABOWSKI	DATE 9/16/2010
APPD	DATE
FEDERAL ID NO. 88725	S.O. T5730915G001
PRODUCT CODE AT	REVISION 01

THE INFORMATION ON THIS DOCUMENT WAS CREATED BY EATON CORPORATION. IT WAS DISCLOSED IN CONFIDENCE AND IS ONLY TO BE USED FOR THE PURPOSE IN WHICH IT WAS SUPPLIED.		
TITLE AUTOMATIC OPEN TRANSFER   CONTACTOR SWITCH 480V 2 POSITION   40-100 AMP   ATC-800 CONTROLLER		
TYPE ATC8C2X30100XSU		OUTLINE
G.O. -		DWG ATC800 2 POS 01
		SHEET 1 OF 4



GH TEST SWITCH	1	2	3	4	5	6	7	8
TEST	X	X	X	X	X	X	X	X
AUTO	X	X	X	X	X	X	X	X
OFF			X	X	X	X	X	X
END. RUN	X	X	X	X	X	X	X	X

NT1/ET1	1	2	3	4	5	6	7	8	9	10	11	12
0V												
208V												
220V												
240V												
380V												
415V												
480V												
600V												
120V												
300VA												
120V												
25VA												

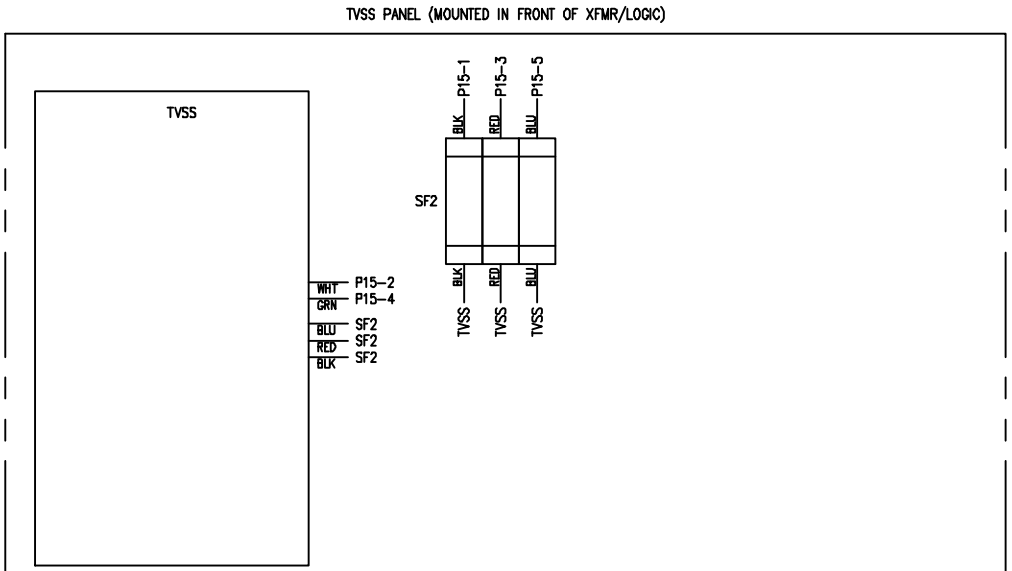
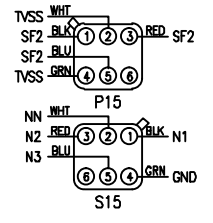
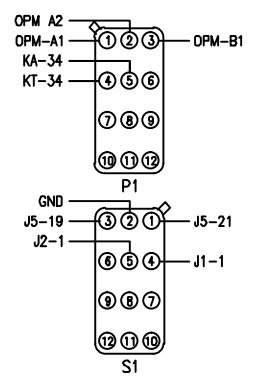
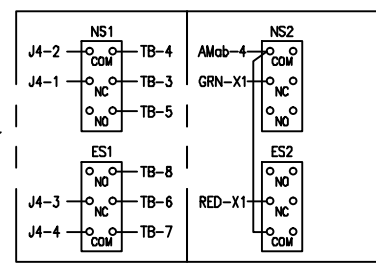
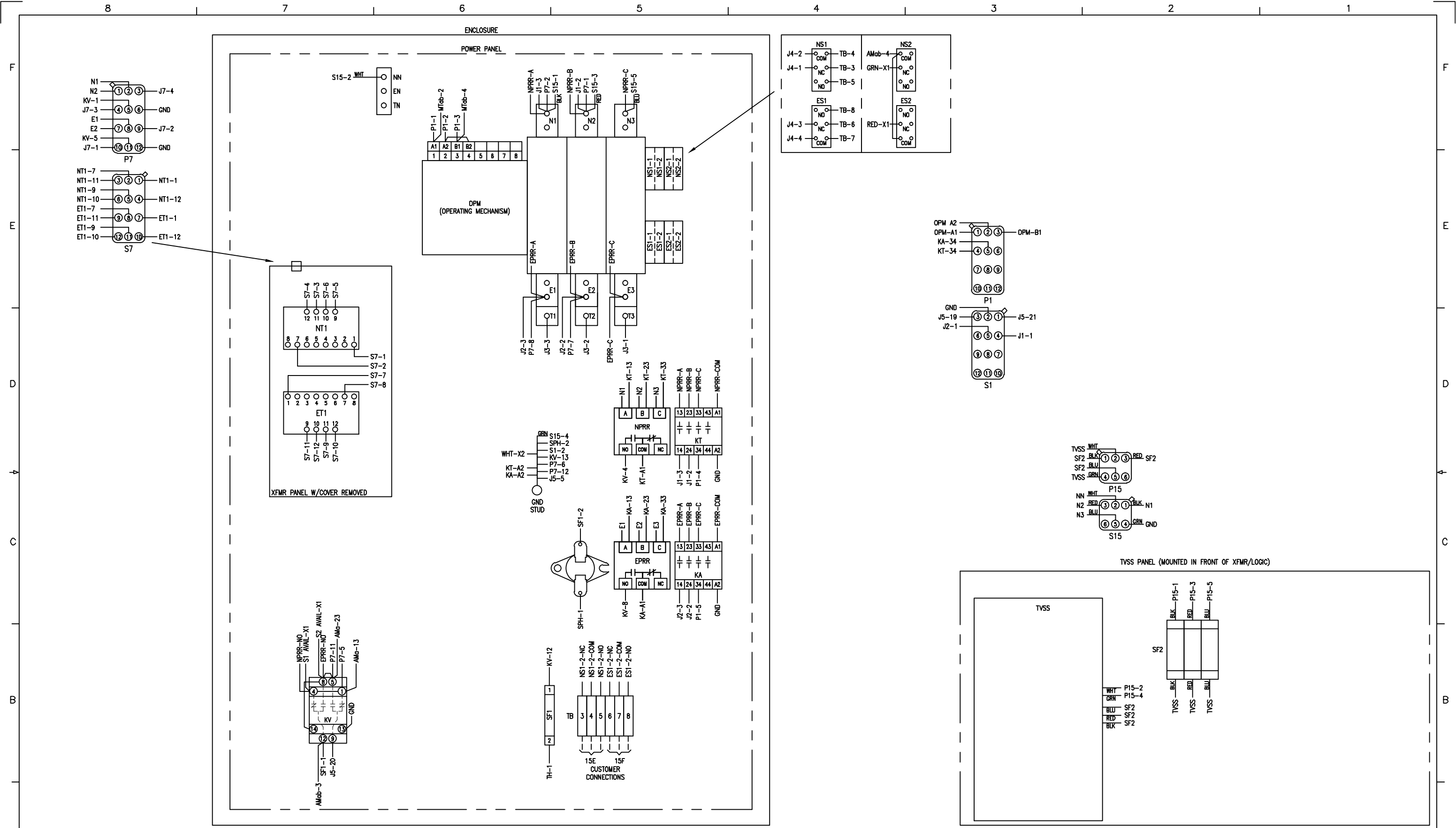
- NT1 - NORMAL TRANSFORMER
- ET1 - EMERGENCY TRANSFORMER
- NRA - NORMAL AUXILIARY RELAY
- ERA - EMERGENCY AUXILIARY RELAY
- NSx - NORMAL AUXILIARY SWITCH
- ESx - EMERGENCY AUXILIARY SWITCH
- NPRR - NORMAL PHASE ROTATION RELAY
- EPRR - EMERGENCY PHASE ROTATION RELAY
- Nx - CUSTOMER NORMAL CONNECTION
- Ex - CUSTOMER EMERGENCY CONNECTION
- Tx - CUSTOMER LOAD CONNECTION
- Px - FEMALE CONNECTOR
- Sx - MALE CONNECTOR
- KV - VOTING RELAY
- FSx - FUSE HOLDER
- TXx - TRANSFORMER

TB CUSTOMER CONTACTS SHOWN DE-ENERGIZED CONNECTED TO NORMAL

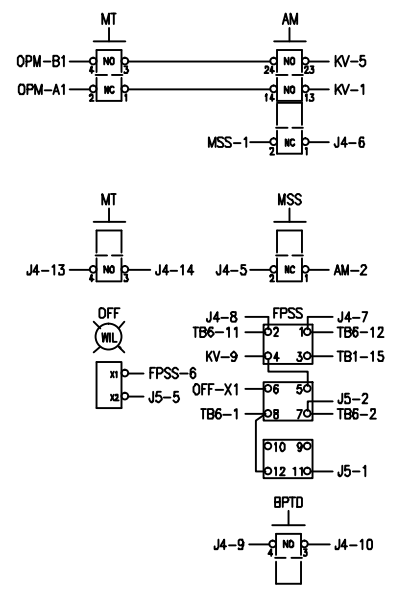
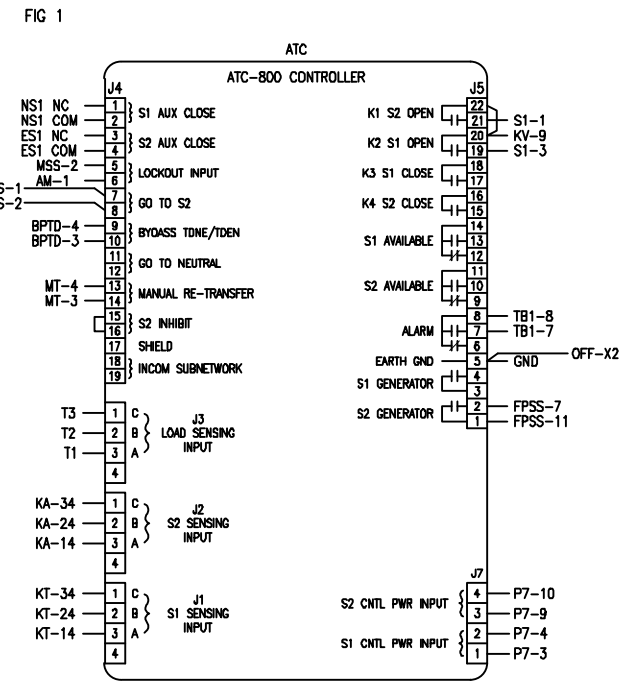
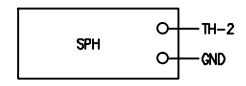
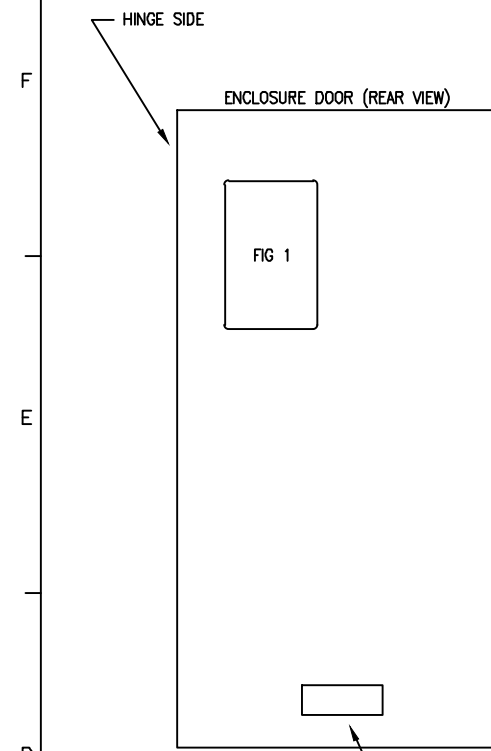
NS1-2 ES1-2

15E 15F POSITION INDICATION

01 REVISION	DFTR JODY GRABOWSKI	DATE 9/16/2010	THE INFORMATION ON THIS DOCUMENT WAS CREATED BY EATON CORPORATION. IT WAS DISCLOSED IN CONFIDENCE AND IS ONLY TO BE USED FOR THE PURPOSE IN WHICH IT WAS SUPPLIED.	
	APPD	DATE	TITLE AUTOMATIC OPEN TRANSFER   CONTACTOR SWITCH 480V 2 POSITION   40-100 AMP   ATC-800 CONTROLLER	
	FEDERAL ID NO. 88725	S.O. T5730915G001	TYPE ATC8C2X30100XSU	SCHEMATIC
	PRODUCT CODE AT	REVISION 01	G.O. -	DWG ATC800 2 POS S1



01	REVISION	DFTR JODY GRABOWSKI	DATE 9/16/2010	THE INFORMATION ON THIS DOCUMENT WAS CREATED BY EATON CORPORATION. IT WAS DISCLOSED IN CONFIDENCE AND IS ONLY TO BE USED FOR THE PURPOSE IN WHICH IT WAS SUPPLIED.		
		APPD	DATE	TITLE AUTOMATIC OPEN TRANSFER   CONTACTOR SWITCH 480V 2 POSITION   40-100 AMP   ATC-800 CONTROLLER		
		FEDERAL ID NO. 88725	S.O. T5730915G001	TYPE ATC8C2X30100XSU	DIAGRAM	
		PRODUCT CODE AT	REVISION 01	G.O. -	DWG ATC800 2 POS W1	SHEET 3 OF 4



29G (MT)	MANUAL TRANSFER SOURCE-1 SOURCE-2
29G (AM)	AUTO MANUAL
9B (MSS)	MAINTENANCE OPERATE DISABLED
8C/D (BPTD)	BYPASS TDEN/TDNE
6H (WIL)	OFF
29J (MT)	PRESS TO RETURN TO SOURCE 1

01  
REVISION

DFTR  
JODY GRABOWSKI

DATE  
9/16/2010

APPD

DATE

FEDERAL ID NO.  
88725

S.O.  
T5730915G001

PRODUCT CODE  
AT

REVISION  
01

THE INFORMATION ON THIS DOCUMENT WAS CREATED BY EATON CORPORATION. IT WAS DISCLOSED IN CONFIDENCE AND IS ONLY TO BE USED FOR THE PURPOSE IN WHICH IT WAS SUPPLIED.

**EATON**

TITLE  
AUTOMATIC OPEN TRANSFER | CONTACTOR SWITCH  
480V 2 POSITION | 40-100 AMP | ATC-800 CONTROLLER

TYPE  
ATC8C2X30100XSU

DIAGRAM

G.O.  
-

DWG  
ATC800 2 POS W2

SHEET  
4 OF 4