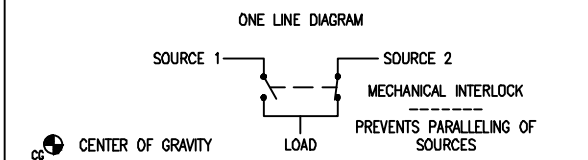


ATC3C3X31200XSU
 AUTOMATIC OPEN TRANSFER CONTACTOR SWITCH
 ATC-300+ CONTROL, 3 POSITION CONTACTOR
 FIXED MOUNTED
 3 POLE, 1200 AMPS
 480/277V 60HZ, 3 PHASE, 4 WIRE
 TYPE-1 ENCLOSURE, UL 1008 LISTED

- FEATURES INCLUDED:
- 1A TIME DELAY NORMAL TO EMERGENCY ADJ 0-1800 sec
 - 2A TIME DELAY ENGINE START ADJ 0-120 sec
 - 3A TIME DELAY EMERGENCY TO NORMAL ADJ 0-1800 sec
 - 4A TIME DELAY ENGINE COOL-OFF ADJ 0-1800 sec
 - 5H EMERGENCY (S2) SENSING PHASE REVERSAL
 - 5J EMERGENCY (S2) SENSING ALL PHASE UNDERVOLTAGE/UNDER FREQ
 - 5K EMERGENCY (S2) SENSING ALL PHASE OVERVOLTAGE/OVER FREQ
 - 5L EMERGENCY (S2) SENSING ALL PHASE VOLTAGE UNBALANCE
 - 6B ENGINE TEST PUSHBUTTON
 - 7A TIME DELAY ENGINE FAIL ADJ 0-6 sec
 - 8C TIME DELAY BYPASS EMERGENCY TO NORMAL
 - 8D TIME DELAY BYPASS NORMAL TO EMERGENCY
 - 12C LED INDICATION NORMAL (S1) CONNECTED
 - 12D LED INDICATION EMERGENCY (S2) CONNECTED
 - 12G LED INDICATION NORMAL (S1) AVAILABLE
 - 12H LED INDICATION EMERGENCY (S2) AVAILABLE
 - 14G AUX RELAY CONTACTS NORMAL (S1) AVAILABLE 2 FORM C
 - 14H AUX RELAY CONTACTS EMERGENCY (S2) AVAILABLE 2 FORM C
 - 15E POSITION INDICATION CONTACT NORMAL (S1) AVAILABLE 1 FORM C
 - 15F POSITION INDICATION CONTACT EMERGENCY (S2) AVAILABLE 1 FORM C
 - 23K PLANT EXERCISER 7/14/28 DAY LOAD/NO LOAD 0-600 min
 - 26D GO TO EMERGENCY (S2) INPUT
 - 26H NORMAL (S1) SENSING PHASE REVERSAL
 - 26J NORMAL (S1) SENSING ALL PHASE UNDERVOLTAGE/UNDER FREQ
 - 26K NORMAL (S1) SENSING ALL PHASE OVERVOLTAGE/OVER FREQ
 - 26L NORMAL (S1) SENSING ALL PHASE VOLTAGE UNBALANCE
 - 32A TIME DELAY NEUTRAL ADJUSTABLE 0 - 120 sec
 - 35A PRETRANSFER SIGNAL CONTACTS 1 FORM C
 - 42 IBC/CBC SEISMIC QUALIFIED
 - 49C MULTI-TAP VOLTAGE TRANSFORMER

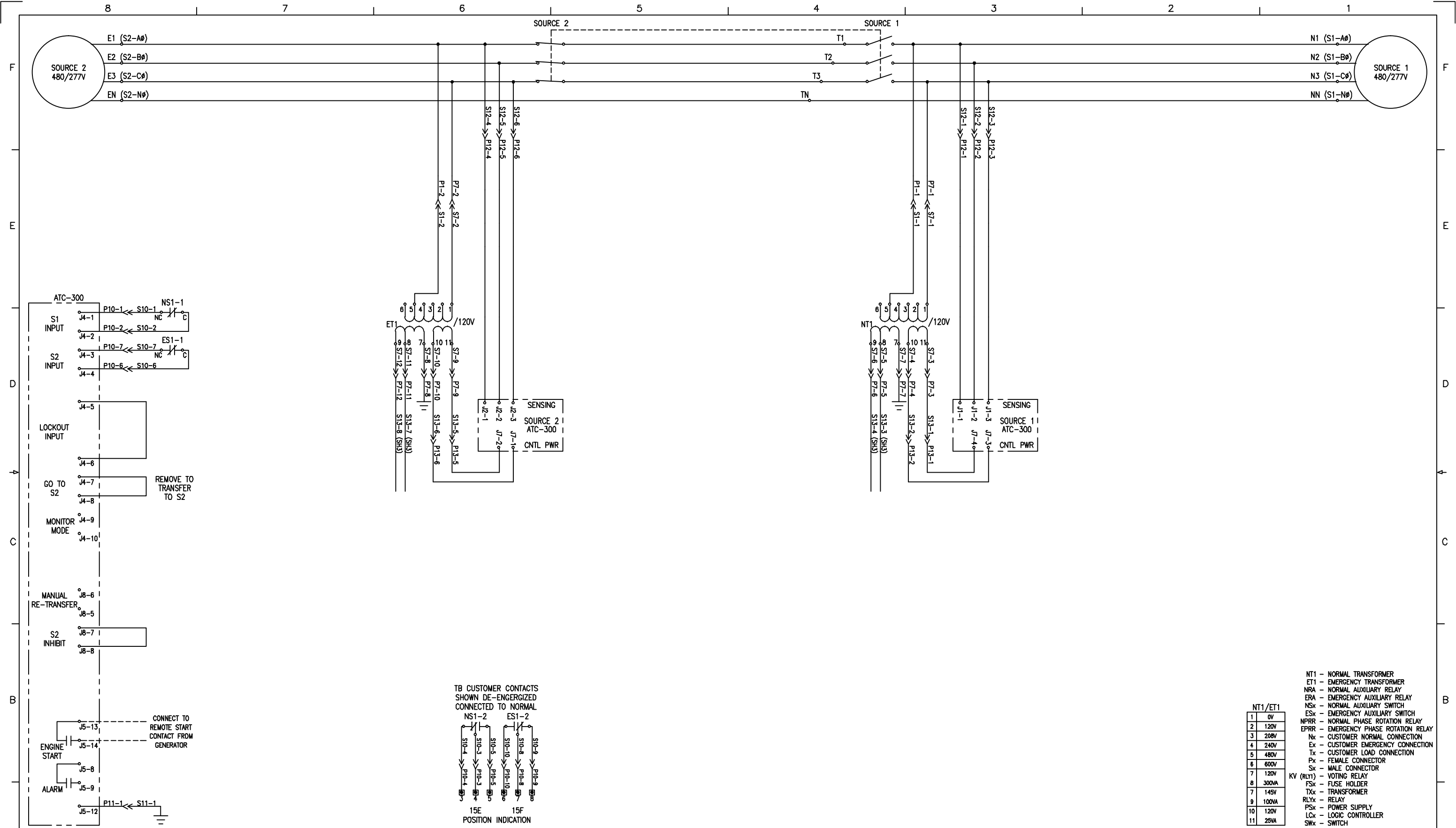
REQUIRED FOR SEISMIC, RECOMMENDED FOR ALL APPLICATIONS:
 USE 4, 5/16-13 UNC GRADE 5 OR BETTER HEX HEAD BOLTS AND WASHERS.
 THESE BOLTS ARE TO BE TORQUED TO 75 FT. LBS. (102 NM).

- NOTES:
- 1 APPROXIMATE SHIPPING WEIGHT = 600 LBS [272 KG]
 - 2 DIMENSIONS SHOWN IN INCHES [MILLIMETERS]
 - 3 AUTOMATIC & NON-AUTOMATIC CONTROLS PROVIDED BASED ON CUSTOMER ORDER INFORMATION.
 - 4 TRANSFORMER PACK INCLUDED WITH ALL SWITCHES
 - 5 FOR SWITCHED NEUTRAL APPLICATIONS, CONNECT TO TERMINALS MARKED 'NN', 'EN', AND 'LN'. NEUTRAL ASSEMBLY WILL NOT BE PROVIDED.



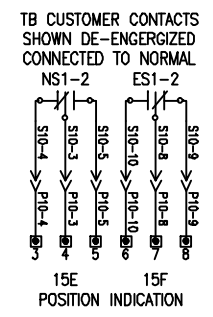
1 REVISION	FEDERAL ID NO. 88725		S.O. T7530124K302		DFTR BARRY GRAVES		DATE 1/24/2013	
	PRODUCT CODE AT		REVISION 1		DESIGNATION 3 POS CONT		DATE	

THE INFORMATION ON THIS DOCUMENT WAS CREATED BY EATON CORPORATION. IT WAS DISCLOSED IN CONFIDENCE AND IS ONLY TO BE USED FOR THE PURPOSE IN WHICH IT WAS SUPPLIED.					
TITLE AUTOMATIC OPEN TRANSFER CONTACTOR SWITCH 480V 3 POSITION 40-1200 AMP ATC-300+ CONTROLLER					
TYPE ATC3C3X31200XSU		OUTLINE			
G.O. -		DWG 3 POS CONT 01		SHEET 1 OF 5	

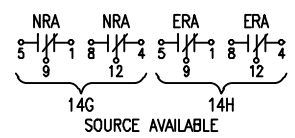
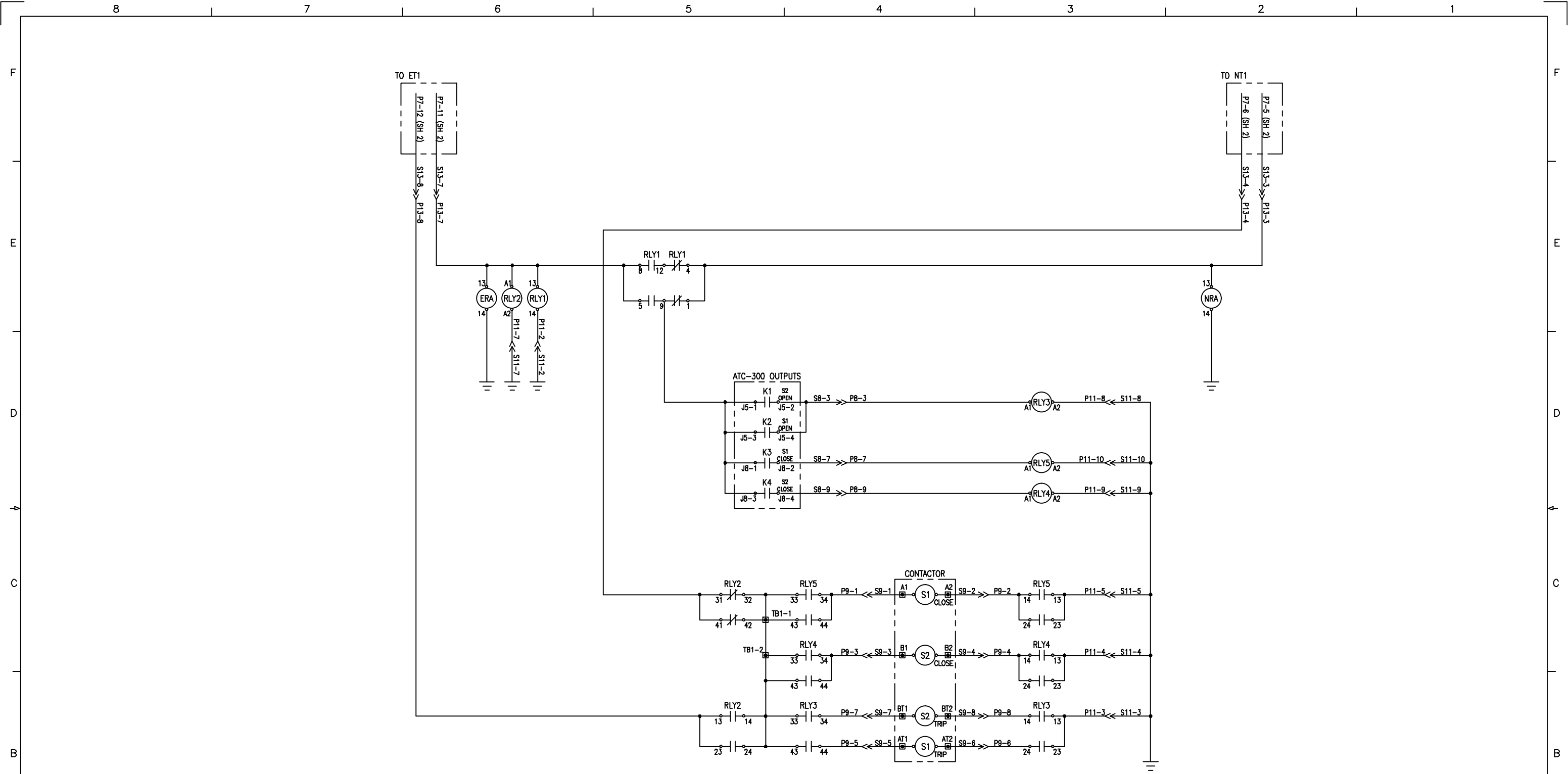


NT1/ET1	
1	0V
2	120V
3	208V
4	240V
5	480V
6	600V
7	120V
8	300VA
9	100VA
10	120V
11	25VA

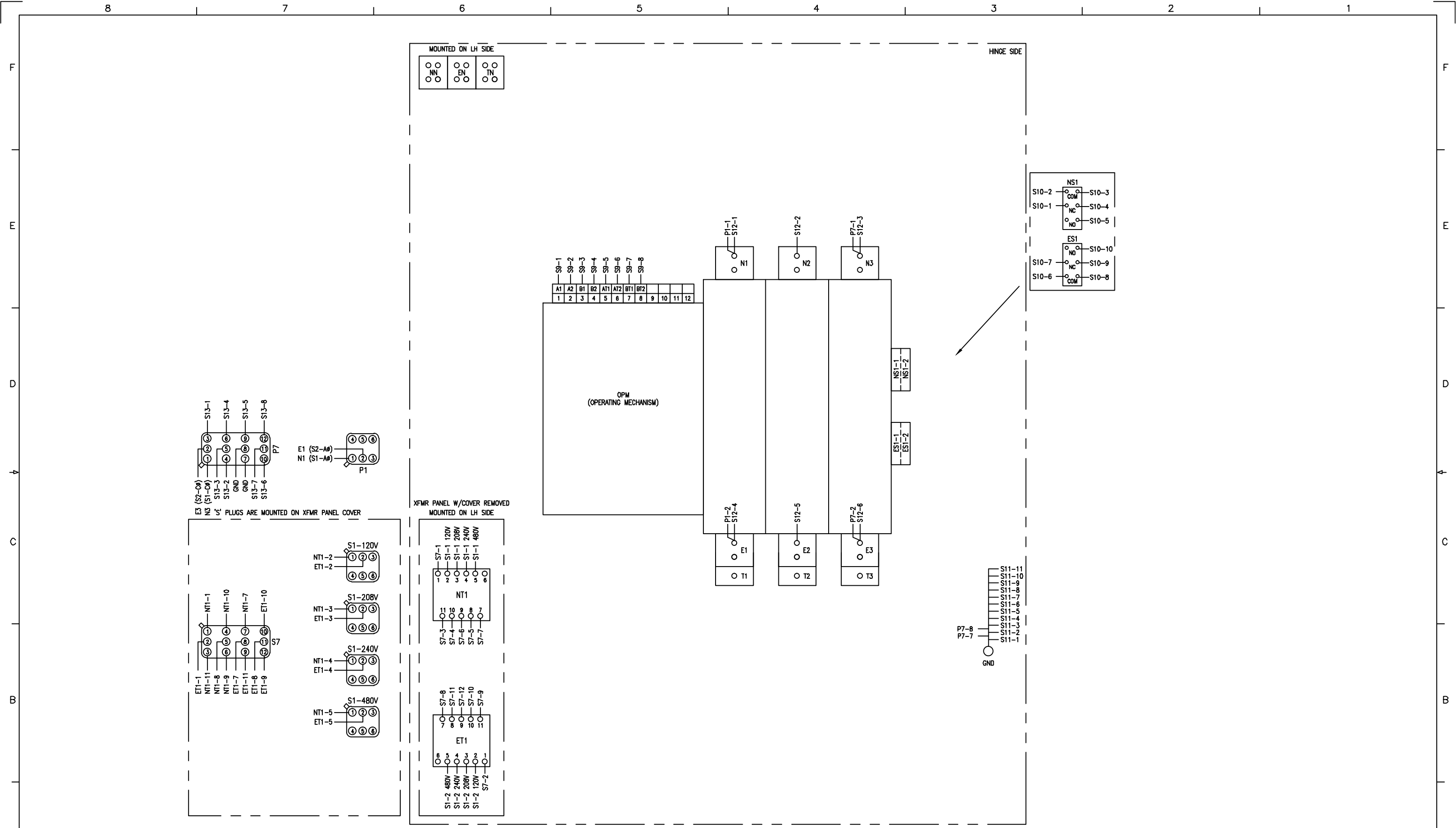
- NT1 - NORMAL TRANSFORMER
- ET1 - EMERGENCY TRANSFORMER
- NRA - NORMAL AUXILIARY RELAY
- ERA - EMERGENCY AUXILIARY RELAY
- NSx - NORMAL AUXILIARY SWITCH
- ESx - EMERGENCY AUXILIARY SWITCH
- NPRR - NORMAL PHASE ROTATION RELAY
- EPRR - EMERGENCY PHASE ROTATION RELAY
- Nx - CUSTOMER NORMAL CONNECTION
- Ex - CUSTOMER EMERGENCY CONNECTION
- Tx - CUSTOMER LOAD CONNECTION
- Px - FEMALE CONNECTOR
- Sx - MALE CONNECTOR
- KV (RLY1) - VOTING RELAY
- FSx - FUSE HOLDER
- TXx - TRANSFORMER
- RLYx - RELAY
- PSx - POWER SUPPLY
- LCx - LOGIC CONTROLLER
- SWx - SWITCH



REVISION	1		DFTR BARRY GRAVES	DATE 1/24/2013	THE INFORMATION ON THIS DOCUMENT WAS CREATED BY EATON CORPORATION. IT WAS DISCLOSED IN CONFIDENCE AND IS ONLY TO BE USED FOR THE PURPOSE IN WHICH IT WAS SUPPLIED.	
			APPD	DATE	TITLE AUTOMATIC OPEN TRANSFER CONTACTOR SWITCH 480V 3 POSITION 40-1200 AMP ATC-300+ CONTROLLER	
		FEDERAL ID NO. 88725	S.O.	T7530124K302	TYPE ATC3C3X31200XSU	SCHEMATIC
		PRODUCT CODE AT	REVISION 1	DESIGNATION 3 POS CONT	G.O. -	DWG 3 POS CONT S1

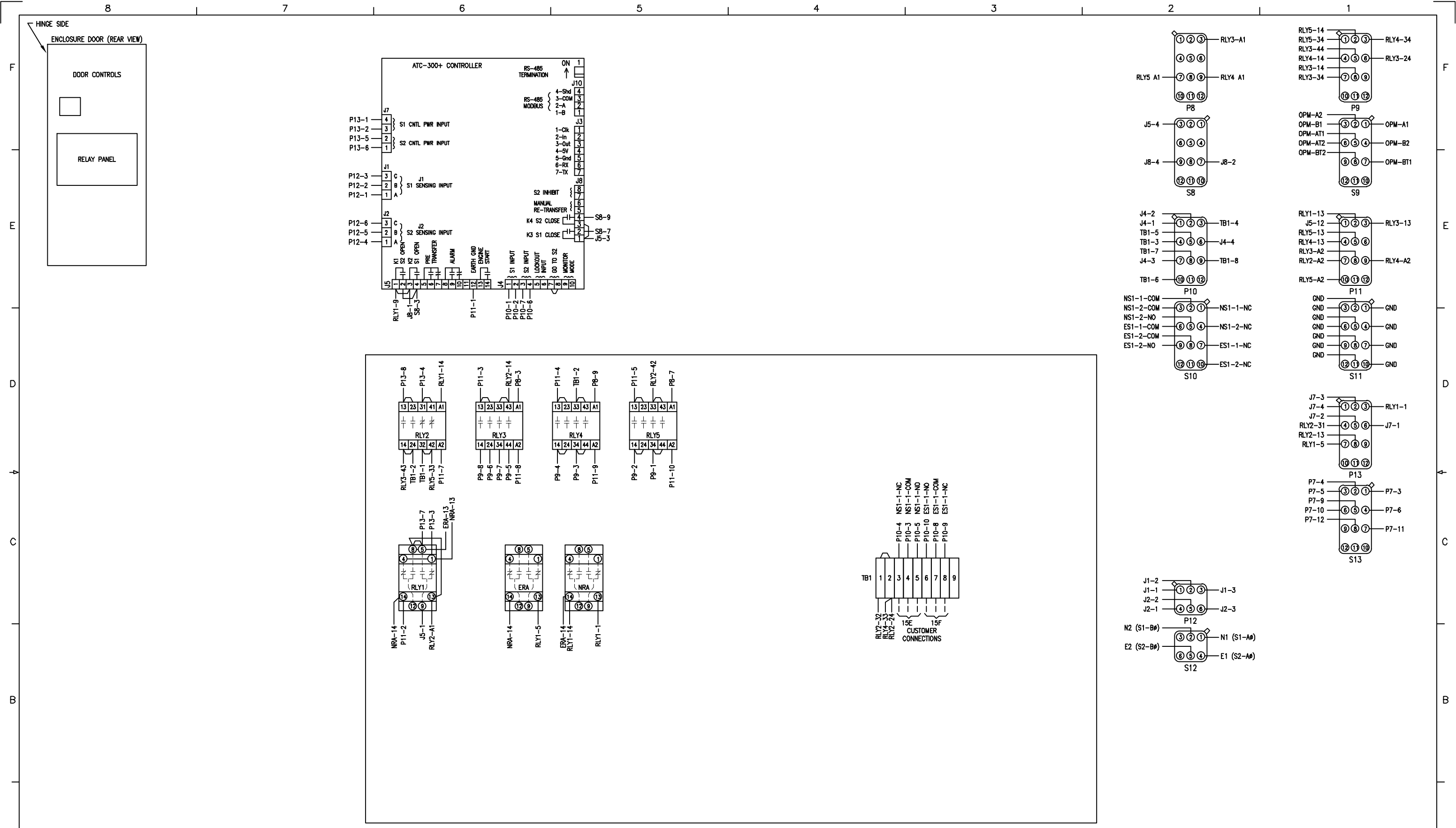


REVISION	1				DFTR BARRY GRAVES	DATE 1/24/2013	THE INFORMATION ON THIS DOCUMENT WAS CREATED BY EATON CORPORATION. IT WAS DISCLOSED IN CONFIDENCE AND IS ONLY TO BE USED FOR THE PURPOSE IN WHICH IT WAS SUPPLIED.			
					APPD	DATE	TITLE AUTOMATIC OPEN TRANSFER CONTACTOR SWITCH 480V 3 POSITION 40-1200 AMP ATC-300+ CONTROLLER			
					FEDERAL ID NO. 88725	S.O. T7530124K302	TYPE ATC3C3X31200XSU			SHEET 3 OF 5
					PRODUCT CODE AT	REVISION 1	DESIGNATION 3 POS CONT	G.O. -		DWG 3 POS CONT S2



1	REVISION
---	----------

DFTR BARRY GRAVES		DATE 1/24/2013	THE INFORMATION ON THIS DOCUMENT WAS CREATED BY EATON CORPORATION. IT WAS DISCLOSED IN CONFIDENCE AND IS ONLY TO BE USED FOR THE PURPOSE IN WHICH IT WAS SUPPLIED.	
APPD		DATE	TITLE AUTOMATIC OPEN TRANSFER CONTACTOR SWITCH 480V 3 POSITION 40-1200 AMP ATC-300+ CONTROLLER	
FEDERAL ID NO. 88725	S.O.	T7530124K302	TYPE ATC3C3X31200XSU	DIAGRAM
PRODUCT CODE AT	REVISION 1	DESIGNATION 3 POS CONT	G.O. -	DWG 3 POS CONT W1
			SHEET 4 OF 5	



1	REVISION	DFTR	DATE	THE INFORMATION ON THIS DOCUMENT WAS CREATED BY EATON CORPORATION. IT WAS DISCLOSED IN CONFIDENCE AND IS ONLY TO BE USED FOR THE PURPOSE IN WHICH IT WAS SUPPLIED.	
		BARRY GRAVES	1/24/2013		
		APPD	DATE		
		FEDERAL ID NO. 88725		S.O.	T7530124K302
PRODUCT CODE	REVISION	DESIGNATION	G.O.	DWG	SHEET
AT	1	3 POS CONT	-	3 POS CONT W2	5 OF 5