

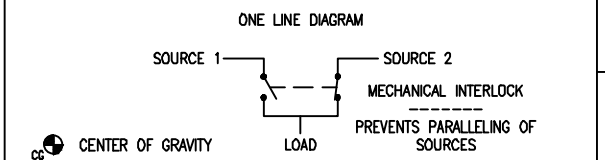
ATC8C3X31200XSU
 AUTOMATIC OPEN TRANSFER CONTACTOR SWITCH
 ATC-800 CONTROL, 3 POSITION CONTACTOR
 FIXED MOUNTED
 3 POLE, 1200 AMPS
 480/277V 60HZ, 3 PHASE, 4 WIRE
 TYPE-1 ENCLOSURE, UL 1008 LISTED

FEATURES INCLUDED:

- 1A TIME DELAY NORMAL TO EMERGENCY ADJ 0-1800 sec
- 2A TIME DELAY ENGINE START ADJ 0-120 sec
- 3A TIME DELAY EMERGENCY TO NORMAL ADJ 0-1800 sec
- 4A TIME DELAY ENGINE COOL-OFF ADJ 0-1800 sec
- 5H EMERGENCY (S2) SENSING PHASE REVERSAL
- 5J EMERGENCY (S2) SENSING ALL PHASE UNDERVOLTAGE/UNDER FREQ
- 5K EMERGENCY (S2) SENSING ALL PHASE OVERVOLTAGE/OVER FREQ
- 5L EMERGENCY (S2) SENSING ALL PHASE VOLTAGE UNBALANCE & PHASE LOSS
- 6B ENGINE TEST PUSHBUTTON
- 6H MAINTAINED 4 POSITION TEST SWITCH
- 7A TIME DELAY ENGINE FAIL ADJ 0-6 sec
- 8C TIME DELAY BYPASS EMERGENCY TO NORMAL
- 8D TIME DELAY BYPASS NORMAL TO EMERGENCY
- 9B MAINTENANCE SELECTOR SWITCH ISOLATES ELEC. OP.
- 10B SOURCE SELECTOR-UTILITY TO UTILITY OR UTILITY TO GENERATOR
- 10D SOURCE SELECTOR-GENERATOR TO GENERATOR
- 12C LED INDICATION NORMAL (S1) CONNECTED
- 12D LED INDICATION EMERGENCY (S2) CONNECTED
- 12G LED INDICATION NORMAL (S1) AVAILABLE
- 12H LED INDICATION EMERGENCY (S2) AVAILABLE
- 14E AUX RELAY CONTACTS NORMAL (S1) AVAILABLE 1 FORM C
- 14F AUX RELAY CONTACTS EMERGENCY (S2) AVAILABLE 1 FORM C
- 15E POSITION INDICATION CONTACT NORMAL (S1) AVAILABLE 1 FORM C
- 15F POSITION INDICATION CONTACT EMERGENCY (S2) AVAILABLE 1 FORM C
- 23J PLANT EXERCISER 7 DAY LOAD/NO LOAD 0-600 min
- 26D GO TO EMERGENCY (S2) INPUT
- 26H NORMAL (S1) SENSING PHASE REVERSAL
- 26J NORMAL (S1) SENSING ALL PHASE UNDERVOLTAGE/UNDER FREQ
- 26K NORMAL (S1) SENSING ALL PHASE OVERVOLTAGE/OVER FREQ
- 26L NORMAL (S1) SENSING ALL PHASE VOLTAGE UNBALANCE & PHASE LOSS
- 29G SELECTABLE AUTOMATIC OR NON-AUTOMATIC OPERATION
- 29J SELECTABLE AUTOMATIC OR NON-AUTOMATIC RETRANSFER w/FAILSAFE
- 32A TIME DELAY NEUTRAL ADJUSTABLE 0 - 120 sec
- 35A PRETRANSFER SIGNAL CONTACTS 1 FORM C
- 36 LOAD SHED FROM EMERGENCY (S2) INHIBIT
- 37 GO TO "ISOLATED" POSITION (NOT SE RATED)
- 41A 100 WATT SPACE HEATER WITH THERMOSTAT
- 42 IBC/CBC SEISMIC QUALIFIED
- 45A LOAD SEQUENCING CONTACTS (1)
- 48F COMMUNICATIONS MODBUS
- 48R REMOTE ANNUNCIATOR
- 49C MULTI-TAP VOLTAGE TRANSFORMER
- 51D1 50KA SURGE DEVICE NORMAL (S1)
- 80A EMERGENCY (S2) INHIBIT CONTACT
- 81A GENERAL ALARM INDICATION CONTACT

REQUIRED FOR SEISMIC, RECOMMENDED FOR ALL APPLICATIONS:
 USE 4, 5/16-13 UNC GRADE 5 OR BETTER HEX HEAD BOLTS AND WASHERS.
 THESE BOLTS ARE TO BE TORQUED TO 75 FT. LBS. (102 NM).

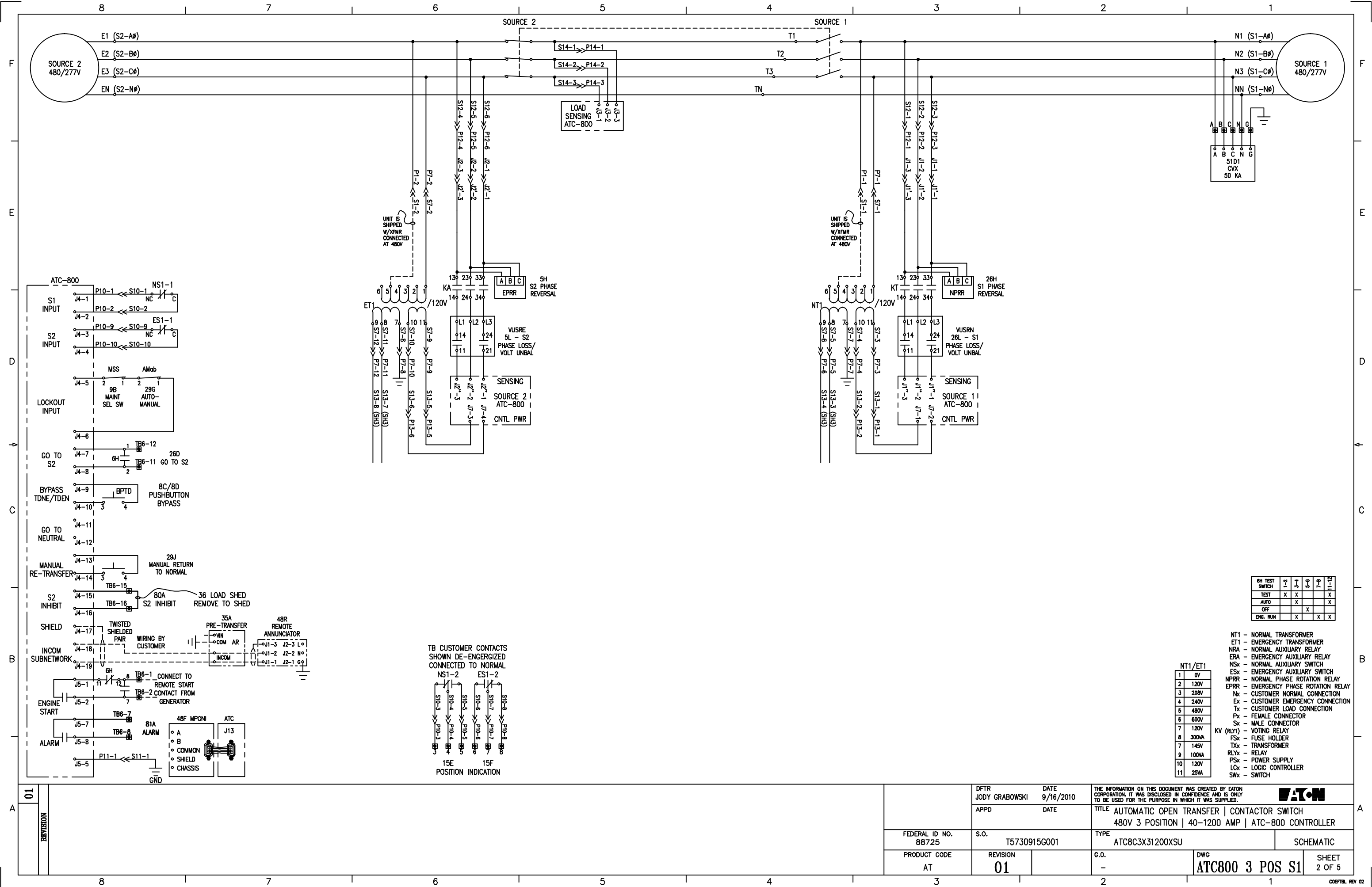
- NOTES:
- 1 APPROXIMATE SHIPPING WEIGHT = 600 LBS [272 KG]
 - 2 DIMENSIONS SHOWN IN INCHES [MILLIMETERS]
 - 3 AUTOMATIC & NON-AUTOMATIC CONTROLS PROVIDED BASED ON CUSTOMER ORDER INFORMATION.
 - 4 TRANSFORMER PACK INCLUDED WITH ALL SWITCHES
 - 5 FOR SWITCHED NEUTRAL APPLICATIONS, CONNECT TO TERMINALS MARKED 'NN', 'EN', AND 'LN'. NEUTRAL ASSEMBLY WILL NOT BE PROVIDED.



01	REVISION
----	----------

DFTR JODY GRABOWSKI	DATE 9/16/2010
APPD	DATE

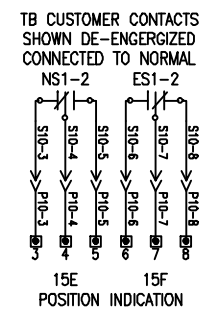
THE INFORMATION ON THIS DOCUMENT WAS CREATED BY EATON CORPORATION. IT WAS DISCLOSED IN CONFIDENCE AND IS ONLY TO BE USED FOR THE PURPOSE IN WHICH IT WAS SUPPLIED.		
TITLE AUTOMATIC OPEN TRANSFER CONTACTOR SWITCH 480V 3 POSITION 40-1200 AMP ATC-800 CONTROLLER		
FEDERAL ID NO. 88725	S.O. T5730915G001	TYPE ATC8C3X31200XSU
PRODUCT CODE AT	REVISION 01	G.O. -
		DWG ATC800 3 POS 01
		OUTLINE SHEET 1 OF 5



6H TEST SWITCH	1	2	3	4	5	6	7	8
TEST	X	X	X	X	X	X	X	X
AUTO			X					
OFF				X				
END. RUN					X	X	X	X

NT1/ET1	
1	0V
2	120V
3	208V
4	240V
5	480V
6	600V
7	120V
8	300VA
9	100VA
10	120V
11	25VA

- NT1 - NORMAL TRANSFORMER
- ET1 - EMERGENCY TRANSFORMER
- NRA - NORMAL AUXILIARY RELAY
- ERA - EMERGENCY AUXILIARY RELAY
- NSx - NORMAL AUXILIARY SWITCH
- ESx - EMERGENCY AUXILIARY SWITCH
- NPRR - NORMAL PHASE ROTATION RELAY
- EPRR - EMERGENCY PHASE ROTATION RELAY
- Nx - CUSTOMER NORMAL CONNECTION
- Ex - CUSTOMER EMERGENCY CONNECTION
- Tx - CUSTOMER LOAD CONNECTION
- Px - FEMALE CONNECTOR
- Sx - MALE CONNECTOR
- KV (RLY1) - VOTING RELAY
- FSx - FUSE HOLDER
- TXx - TRANSFORMER
- RLYx - RELAY
- PSx - POWER SUPPLY
- LCx - LOGIC CONTROLLER
- SWx - SWITCH



01
REVISION

DFTR
JODY GRABOWSKI
DATE
9/16/2010
APPD
DATE
S.O.
T5730915G001
REVISION
01

THE INFORMATION ON THIS DOCUMENT WAS CREATED BY EATON CORPORATION. IT WAS DISCLOSED IN CONFIDENCE AND IS ONLY TO BE USED FOR THE PURPOSE IN WHICH IT WAS SUPPLIED.

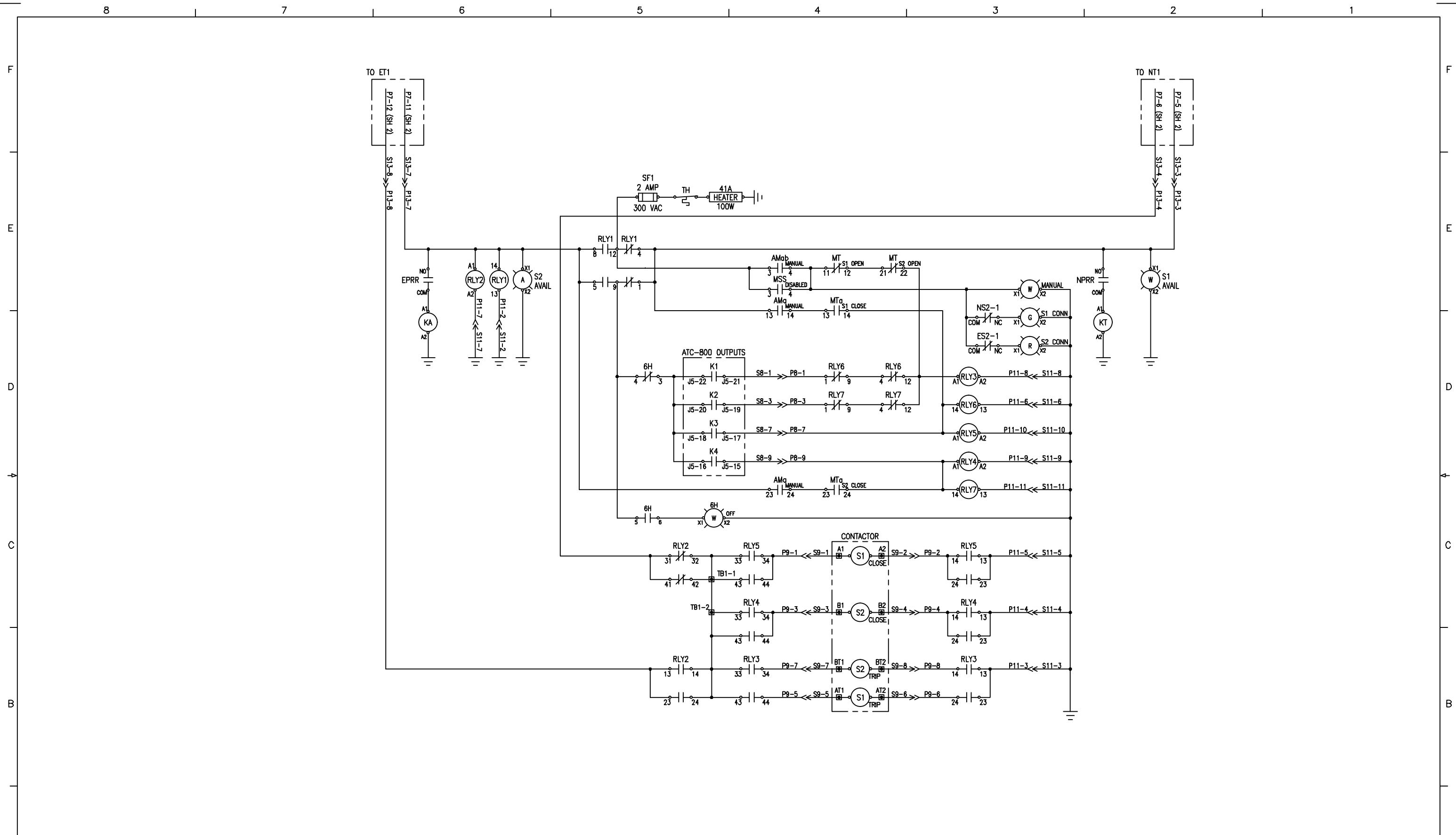
TITLE
AUTOMATIC OPEN TRANSFER | CONTACTOR SWITCH
480V 3 POSITION | 40-1200 AMP | ATC-800 CONTROLLER

TYPE
ATC8C3X31200XSU

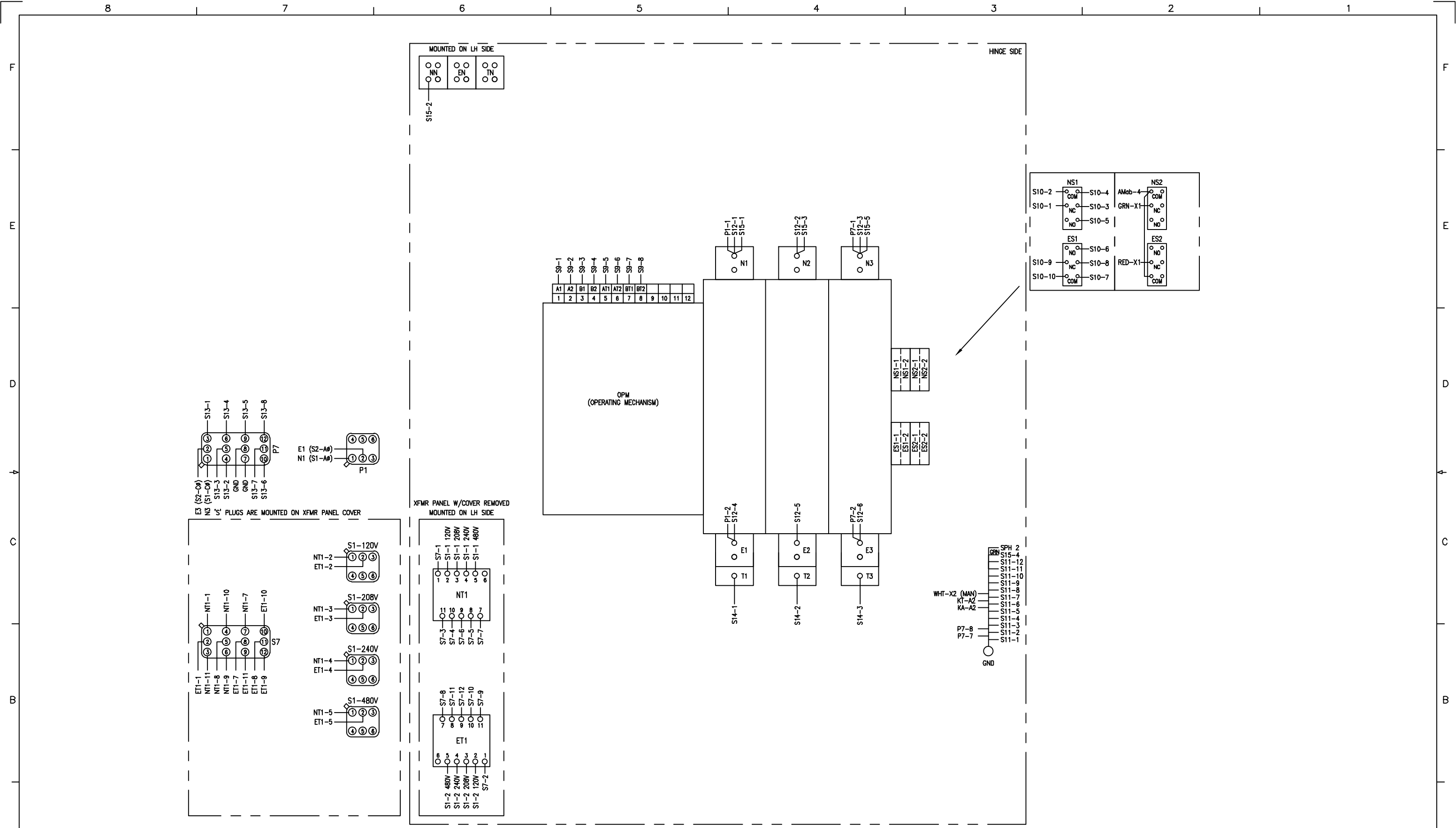
G.O.
-

DWG
ATC800 3 POS S1

SHEET
2 OF 5



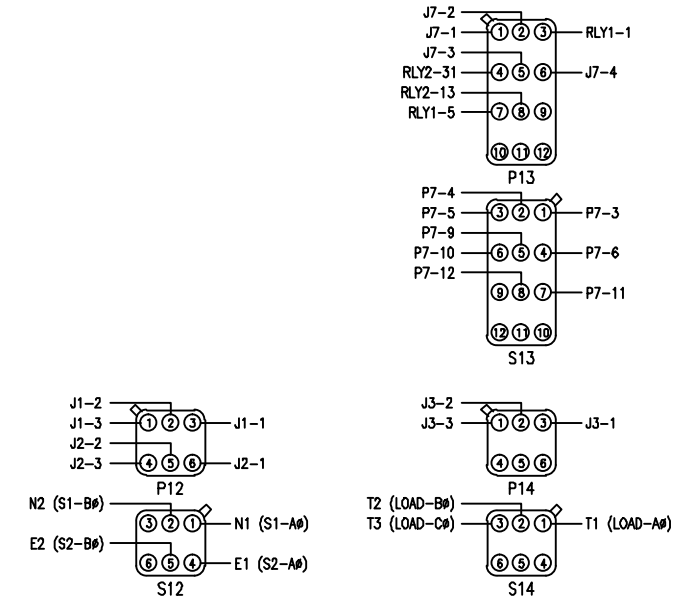
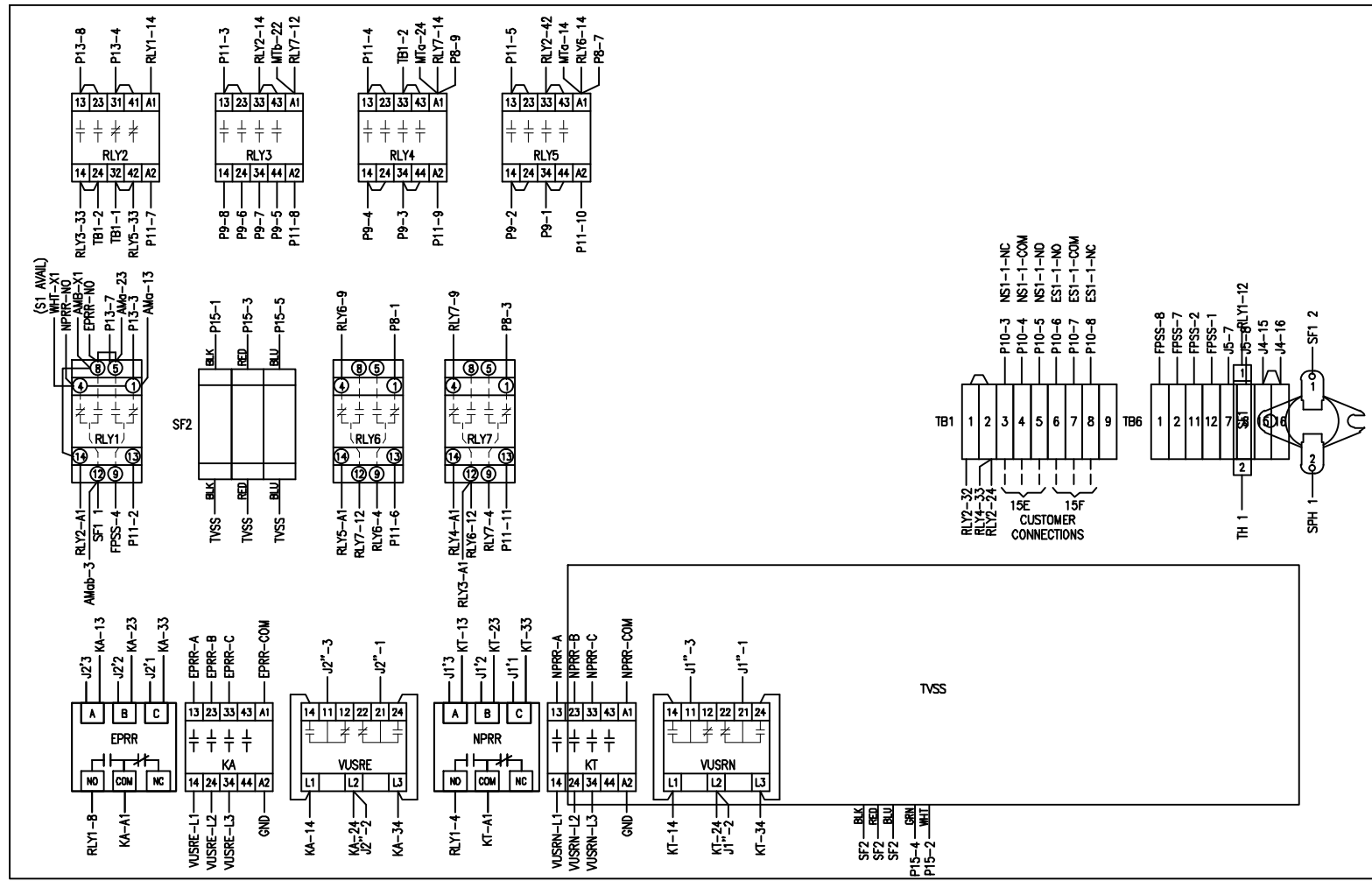
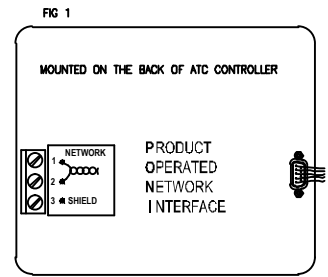
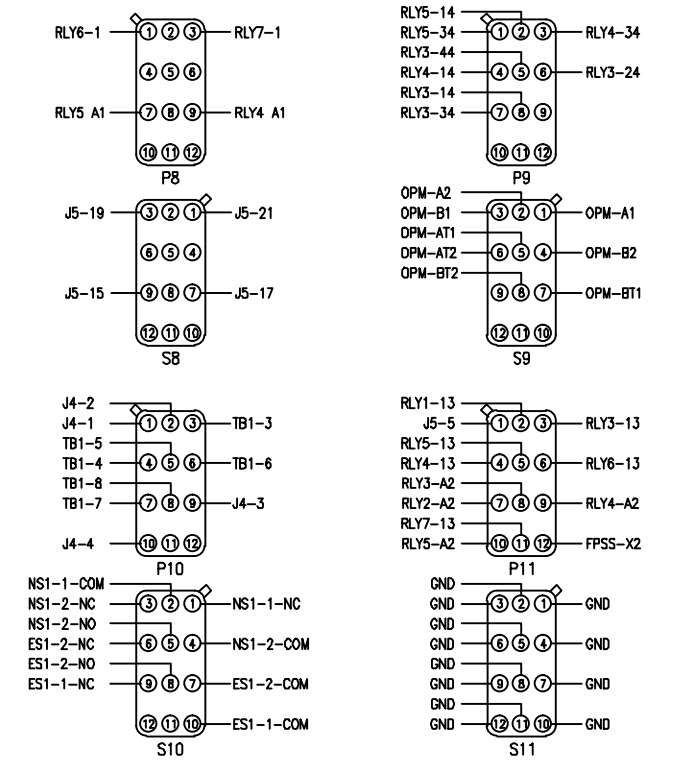
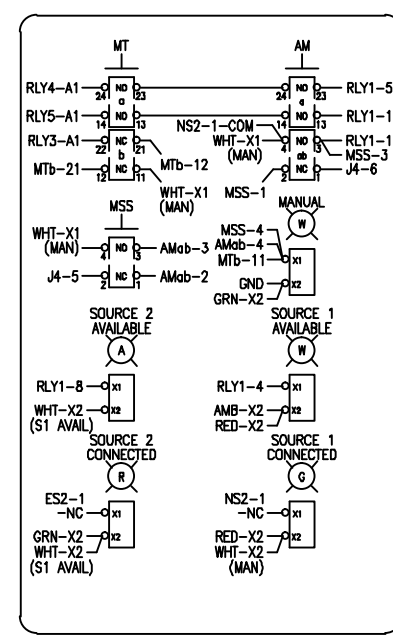
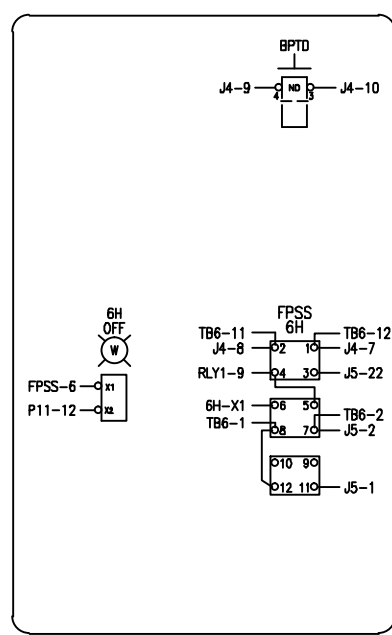
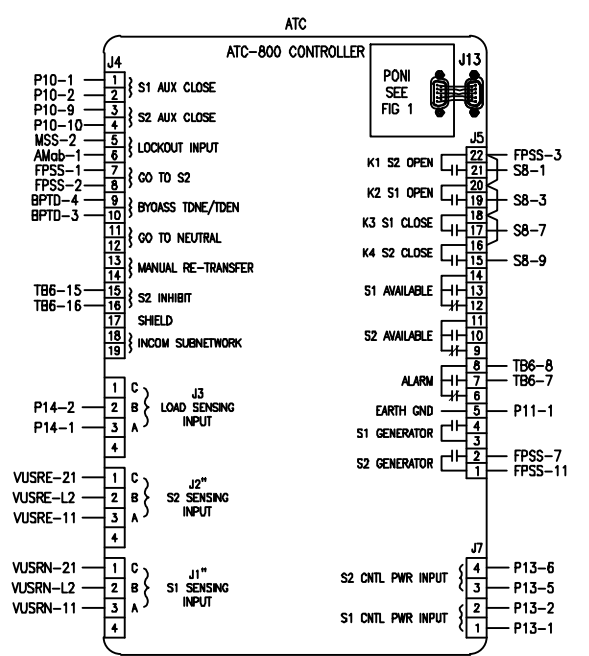
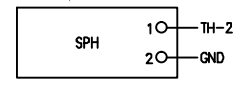
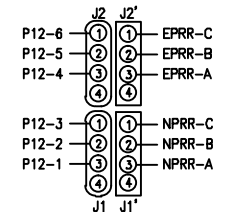
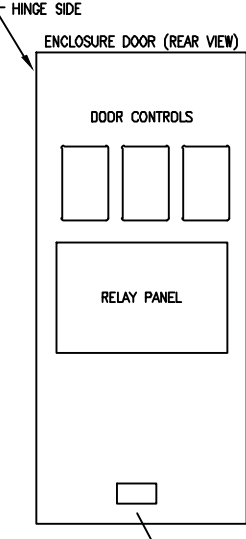
01 REVISION	DFTR JODY GRABOWSKI	DATE 9/16/2010	THE INFORMATION ON THIS DOCUMENT WAS CREATED BY EATON CORPORATION. IT WAS DISCLOSED IN CONFIDENCE AND IS ONLY TO BE USED FOR THE PURPOSE IN WHICH IT WAS SUPPLIED.	
	APPD	DATE		
	FEDERAL ID NO. 88725	S.O. T5730915G001	TITLE AUTOMATIC OPEN TRANSFER CONTACTOR SWITCH 480V 3 POSITION 40-1200 AMP ATC-800 CONTROLLER	
	PRODUCT CODE AT	REVISION 01	G.O. -	DWG ATC800 3 POS S2



01

REVISION	DATE	DFTR
	9/16/2010	JODY GRABOWSKI
	DATE	APPD
FEDERAL ID NO.	S.O.	DATE
88725	T5730915G001	
PRODUCT CODE	REVISION	G.O.
AT	01	-

THE INFORMATION ON THIS DOCUMENT WAS CREATED BY EATON CORPORATION. IT WAS DISCLOSED IN CONFIDENCE AND IS ONLY TO BE USED FOR THE PURPOSE IN WHICH IT WAS SUPPLIED.		
TITLE		
AUTOMATIC OPEN TRANSFER CONTACTOR SWITCH		DIAGRAM
480V 3 POSITION 40-1200 AMP ATC-800 CONTROLLER		
TYPE		SHEET
ATC8C3X31200XSU		
DWG		4 OF 5
ATC800 3 POS W1		



6H	TEST AUTO OFF START ENG
29G (MT)	MANUAL TRANSFER NORMAL OFF EMERGENCY
29G (AM)	AUTO MANUAL
9B (MSS)	MAINTENANCE OPERATE DISABLED

01 REVISION	DFTR JODY GRABOWSKI	DATE 9/16/2010	THE INFORMATION ON THIS DOCUMENT WAS CREATED BY EATON CORPORATION. IT WAS DISCLOSED IN CONFIDENCE AND IS ONLY TO BE USED FOR THE PURPOSE IN WHICH IT WAS SUPPLIED.	
	APPD	DATE	TITLE AUTOMATIC OPEN TRANSFER CONTACTOR SWITCH 480V 3 POSITION 40-1200 AMP ATC-800 CONTROLLER	
	FEDERAL ID NO. 88725	S.O. T5730915G001	TYPE ATC8C3X31200XSU	DIAGRAM
	PRODUCT CODE AT	REVISION 01	G.O.	DWG ATC800 3 POS W2