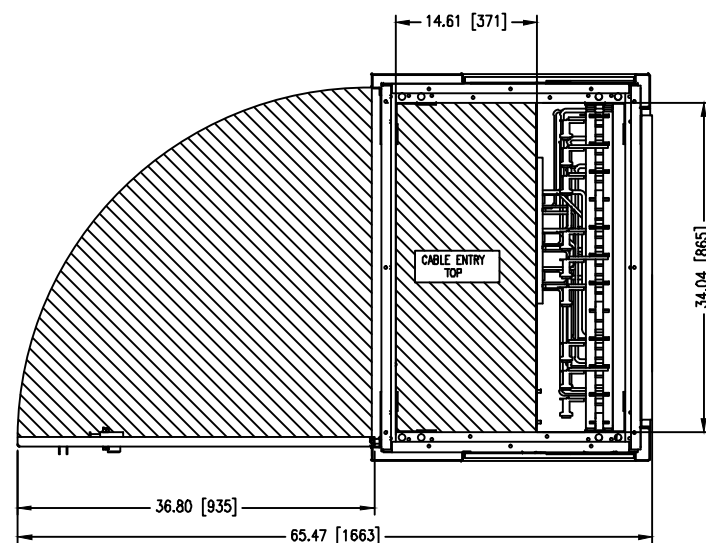
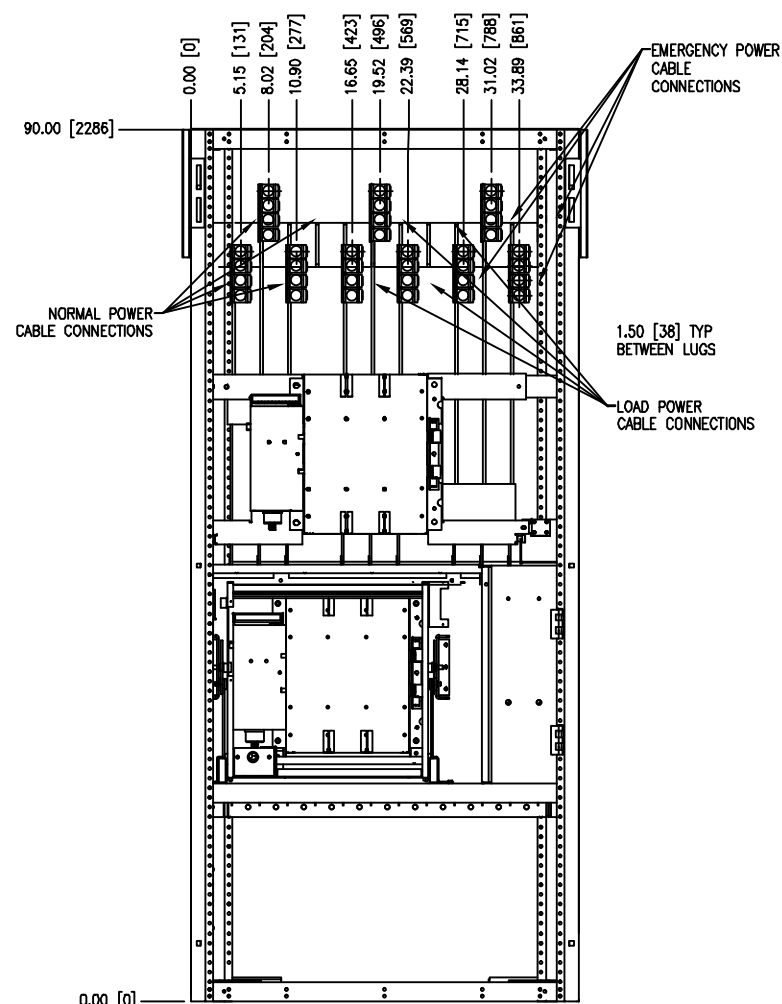


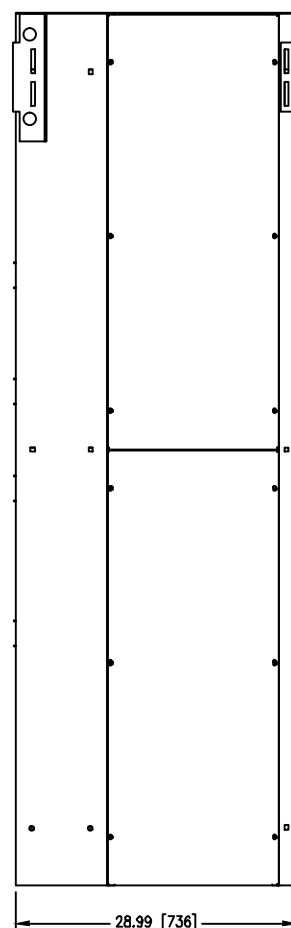
TOP VIEW



PLAN VIEW



FRONT VIEW



SIDE VIEW

BIC3C3X31200XSU

BYPASS ISOLATION OPEN TRANSFER CONTACTOR SWITCH
 ATC-300+ CONTROL, 3 POSITION CONTACTOR
 FIXED MOUNTED
 3 POLE, 1200 AMPS
 480/277V 60HZ, 3 PHASE, 4 WIRE
 TYPE-1 ENCLOSURE, UL 1008 LISTED

FEATURES INCLUDED:

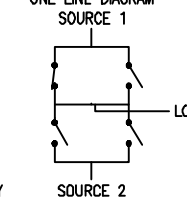
- 1A TIME DELAY NORMAL TO EMERGENCY ADJ 0-1800 sec
- 2A TIME DELAY ENGINE START ADJ 0-120 sec
- 3A TIME DELAY EMERGENCY TO NORMAL ADJ 0-1800 sec
- 4A TIME DELAY ENGINE COOL-OFF ADJ 0-1800 sec
- 5H EMERGENCY (S2) SENSING PHASE REVERSAL
- 5J EMERGENCY (S2) SENSING ALL PHASE UNDERVOLTAGE/UNDER FREQ
- 5K EMERGENCY (S2) SENSING ALL PHASE OVERVOLTAGE/OVER FREQ
- 5L EMERGENCY (S2) SENSING ALL PHASE VOLTAGE UNBALANCE
- 6B ENGINE TEST PUSHBUTTON
- 7A TIME DELAY ENGINE FAIL ADJ 0-6 sec
- 8C TIME DELAY BYPASS EMERGENCY TO NORMAL
- 8D TIME DELAY BYPASS NORMAL TO EMERGENCY
- 12C LED INDICATION NORMAL (S1) CONNECTED
- 12D LED INDICATION EMERGENCY (S2) CONNECTED
- 12G LED INDICATION NORMAL (S1) AVAILABLE
- 12H LED INDICATION EMERGENCY (S2) AVAILABLE
- 14G AUX RELAY CONTACTS NORMAL (S1) AVAILABLE 2 FORM C
- 14H AUX RELAY CONTACTS EMERGENCY (S2) AVAILABLE 2 FORM C
- 15E POSITION INDICATION CONTACT NORMAL (S1) AVAILABLE 1 FORM C
- 15F POSITION INDICATION CONTACT EMERGENCY (S2) AVAILABLE 1 FORM C
- 23K PLANT EXERCISER 7/14/28 DAY LOAD/NO LOAD 0-600 min
- 26D GO TO EMERGENCY (S2) INPUT
- 26H NORMAL (S1) SENSING PHASE REVERSAL
- 26J NORMAL (S1) SENSING ALL PHASE UNDERVOLTAGE/UNDER FREQ
- 26K NORMAL (S1) SENSING ALL PHASE OVERVOLTAGE/OVER FREQ
- 26L NORMAL (S1) SENSING ALL PHASE VOLTAGE UNBALANCE
- 29D DUAL ATS
- 32A TIME DELAY NEUTRAL ADJUSTABLE 0 - 120 sec
- 35A PRETRANSFER SIGNAL CONTACTS 1 FORM C
- 36 LOAD SHED FROM EMERGENCY (S2) INHIBIT
- 42 IBC/CBC SEISMIC QUALIFIED
- 49C MULTI-TAP VOLTAGE TRANSFORMER
- 59A SILVER PLATED BUS
- 61B 120VAC UPS TERMINAL BLOCK INPUT
- 80A EMERGENCY (S2) INHIBIT CONTACT

REQUIRED FOR SEISMIC, RECOMMENDED FOR ALL APPLICATIONS:
 USE 4, 1/2-13 UNC GRADE 5 OR BETTER HEX HEAD BOLTS AND WASHERS.
 THESE BOLTS ARE TO BE TORQUED TO 50 FT. LBS. (68 NM).

NOTES:

- 1 APPROXIMATE SHIPPING WEIGHT = 1750 LBS [794 KG]
- 2 DIMENSIONS SHOWN IN INCHES [MILLIMETERS] SCALE: 1 = 1.4

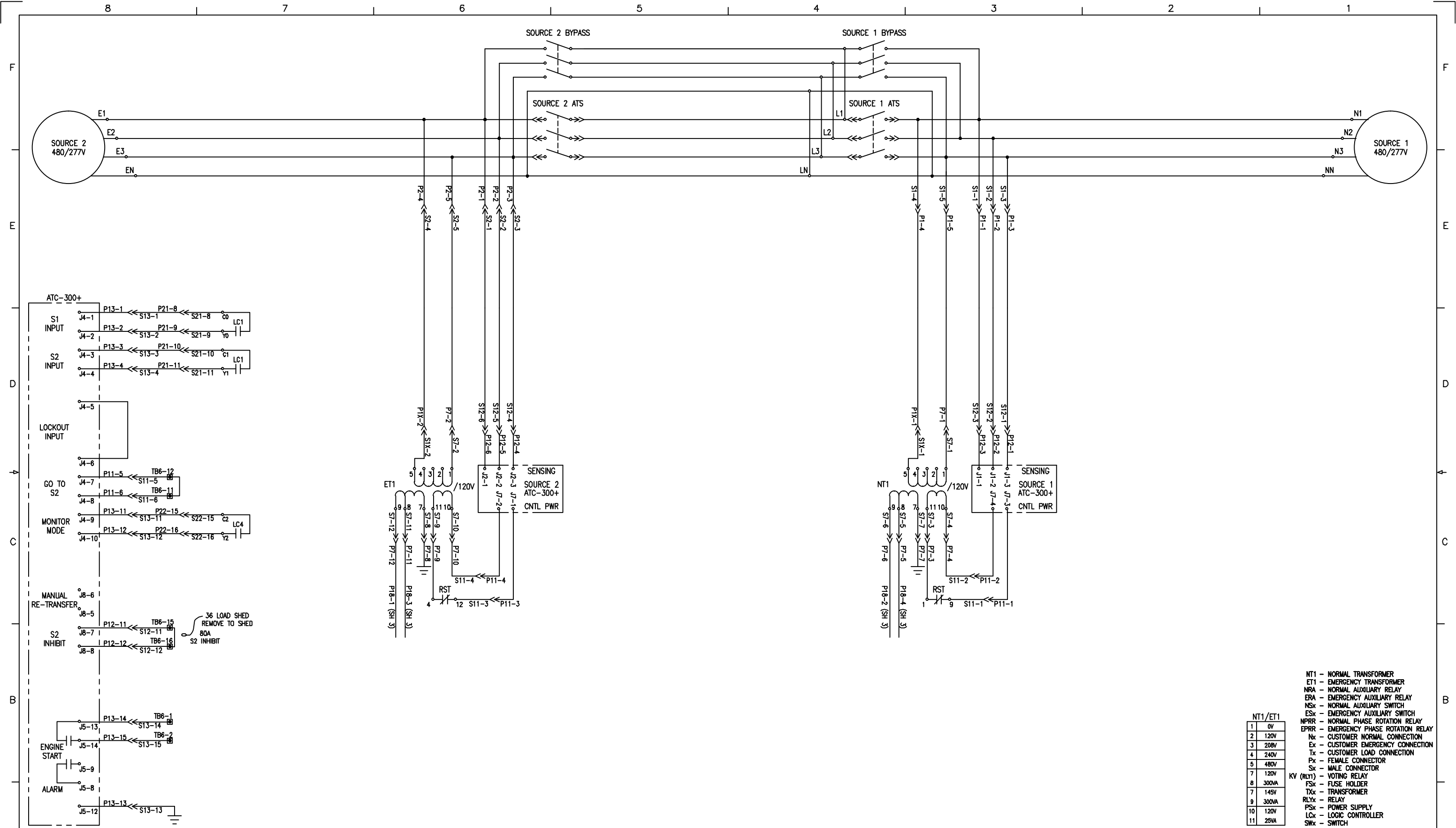
ONE LINE DIAGRAM



CC CENTER OF GRAVITY

1	REVISION
---	----------

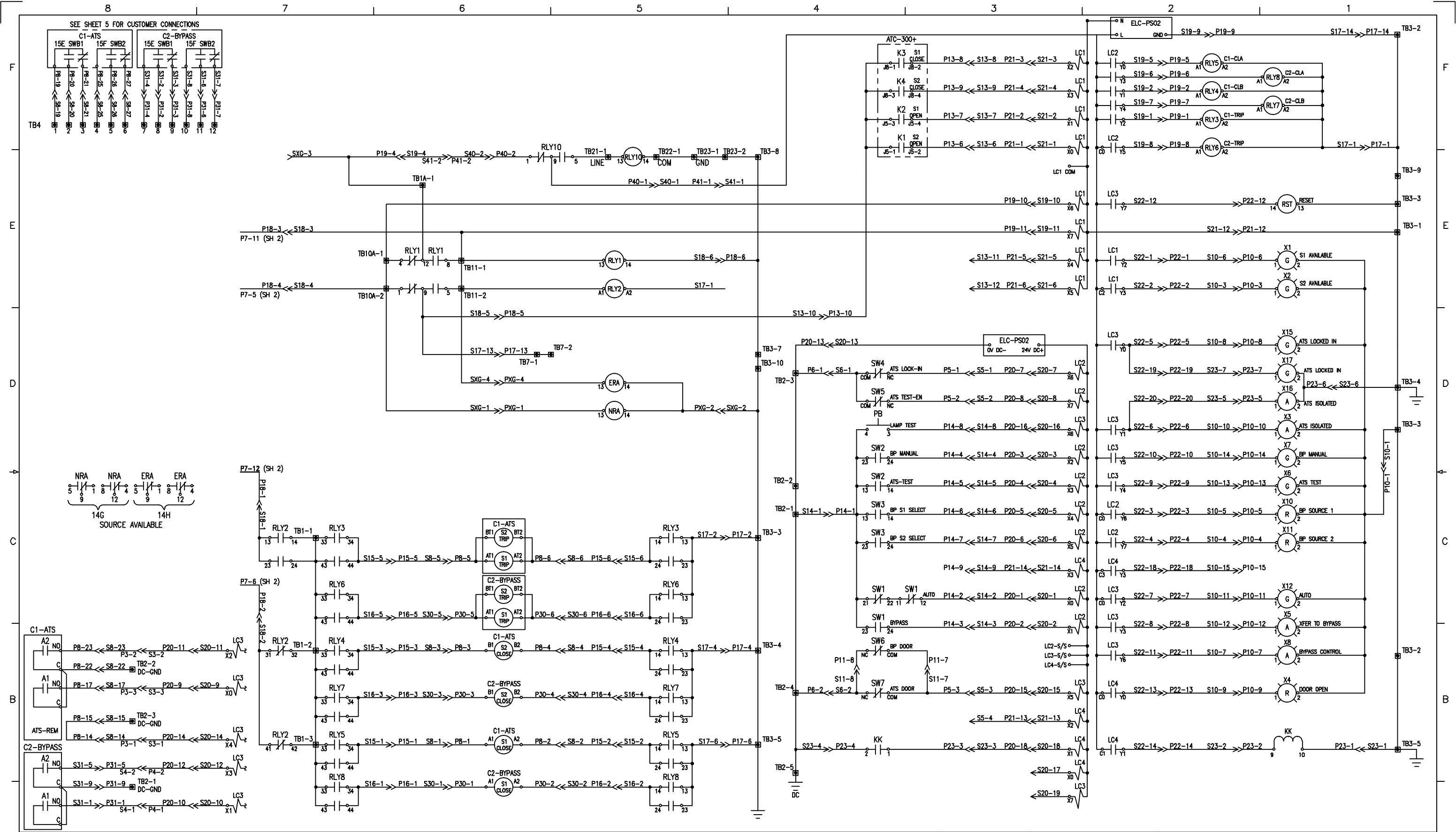
DFTR		DATE	THE INFORMATION ON THIS DOCUMENT WAS CREATED BY EATON CORPORATION. IT WAS DISCLOSED IN CONFIDENCE AND IS ONLY TO BE USED FOR THE PURPOSE IN WHICH IT WAS SUPPLIED.		
APPD		DATE			
FEDERAL ID NO. 88725	S.O.	TITLE BYPASS ISOLATION OPEN TRANSFER CONTACTOR SWITCH 480V 3 POSITION 100-1200 AMP ATC-300+ CONTROLLER			
PRODUCT CODE AT	REVISION 1	DESIGNATION ATC300+ BYP F	G.O. -	DWG ATC300+ BYP F 01	SHEET 1 OF 7



NT1/ET1	
1	0V
2	120V
3	208V
4	240V
5	480V
7	120V
8	300VA
9	300VA
10	120V
11	25VA

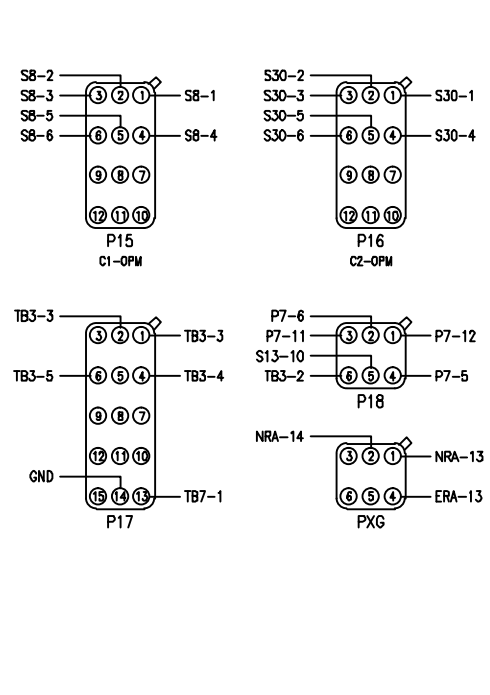
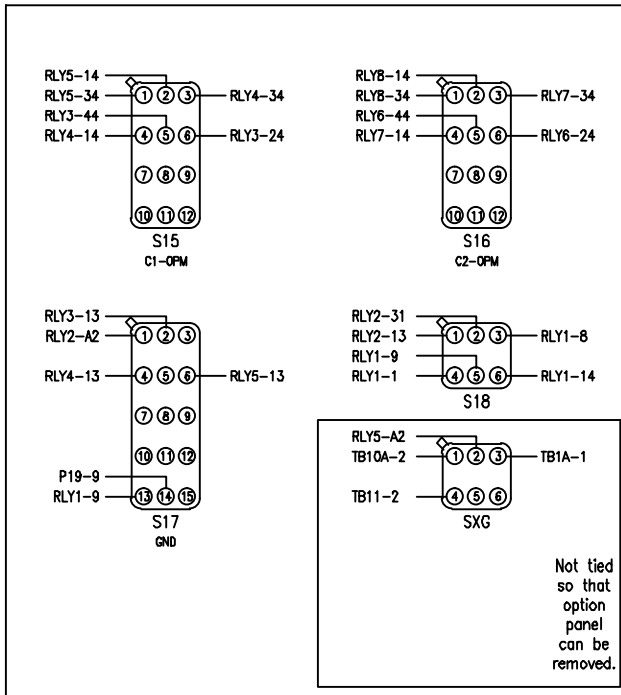
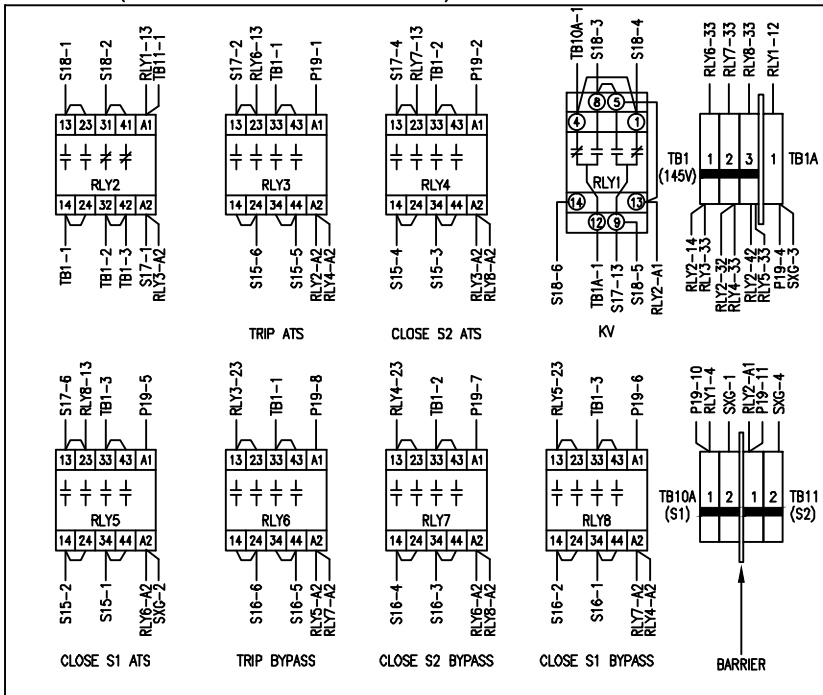
- NT1 - NORMAL TRANSFORMER
- ET1 - EMERGENCY TRANSFORMER
- NRA - NORMAL AUXILIARY RELAY
- ERA - EMERGENCY AUXILIARY RELAY
- NSx - NORMAL AUXILIARY SWITCH
- ESx - EMERGENCY AUXILIARY SWITCH
- EPRR - EMERGENCY PHASE ROTATION RELAY
- NPRR - NORMAL PHASE ROTATION RELAY
- Nx - CUSTOMER NORMAL CONNECTION
- Ex - CUSTOMER EMERGENCY CONNECTION
- Tx - CUSTOMER LOAD CONNECTION
- Px - FEMALE CONNECTOR
- Sx - MALE CONNECTOR
- KV (RLY1) - VOTING RELAY
- FSx - FUSE HOLDER
- TXx - TRANSFORMER
- RLYx - RELAY
- PSx - POWER SUPPLY
- LCx - LOGIC CONTROLLER
- SWx - SWITCH

1	REVISION		DFTR	DATE	THE INFORMATION ON THIS DOCUMENT WAS CREATED BY EATON CORPORATION. IT WAS DISCLOSED IN CONFIDENCE AND IS ONLY TO BE USED FOR THE PURPOSE IN WHICH IT WAS SUPPLIED.			
			APPD	DATE	TITLE BYPASS ISOLATION OPEN TRANSFER CONTACTOR SWITCH 480V 3 POSITION 100-1200 AMP ATC-300+ CONTROLLER			
		FEDERAL ID NO. 88725	S.O.		TYPE	BIC3C3X31200XSU	FIXED MOUNT	SCHEMATIC
		PRODUCT CODE AT	REVISION 1	DESIGNATION ATC300+ BYP F	G.O.	DWG ATC300+ BYP F S1	SHEET 2 OF 7	1

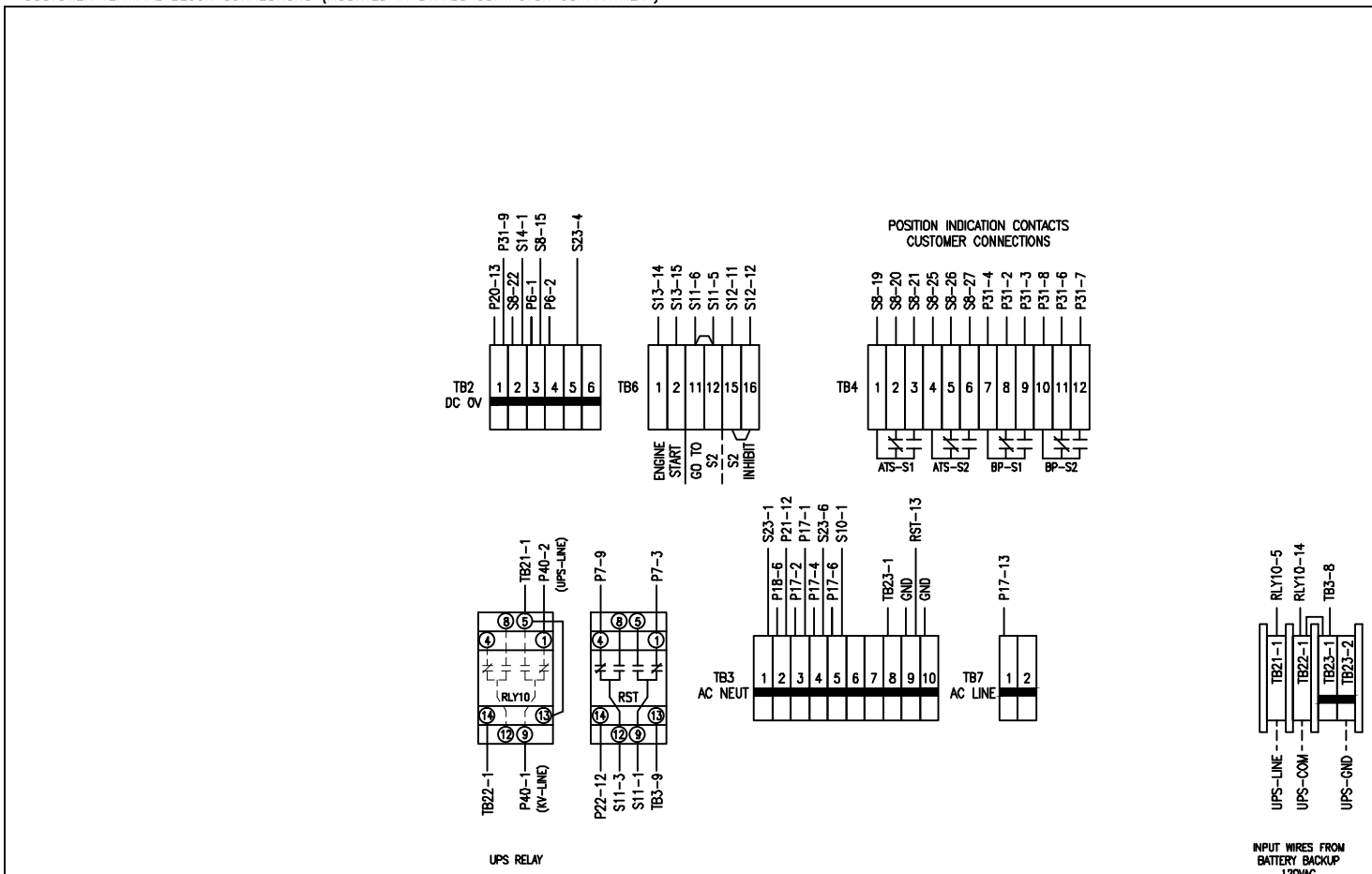


REVISION	DATE	DFTR	THE INFORMATION ON THIS DOCUMENT WAS CREATED BY EATON CORPORATION. IT WAS DISCLOSED IN CONFIDENCE AND IS ONLY TO BE USED FOR THE PURPOSE IN WHICH IT WAS SUPPLIED.	
	DATE	APPD	TITLE BYPASS ISOLATION OPEN TRANSFER CONTACTOR SWITCH	
	S.O.	FEDERAL ID NO. 88725	TYPE BIC3C3X31200XSU FIXED MOUNT SCHEMATIC	
	REVISION 1	PRODUCT CODE AT	DESIGNATION ATC300+ BYP F	G.O. - DWG ATC300+ BYP F S2 SHEET 3 OF 7

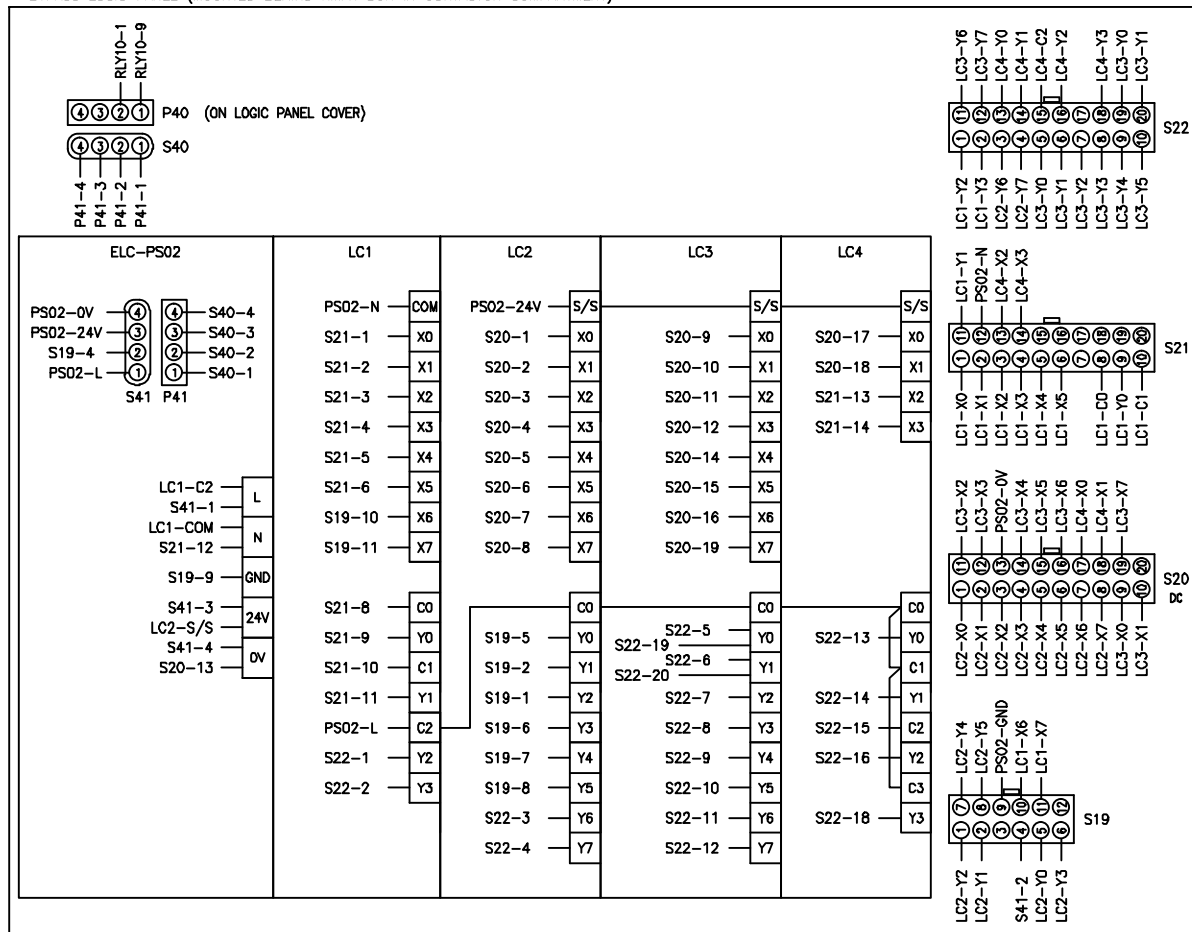
RELAY PANEL (MOUNTED IN ATS CONTACTOR COMPARTMENT)



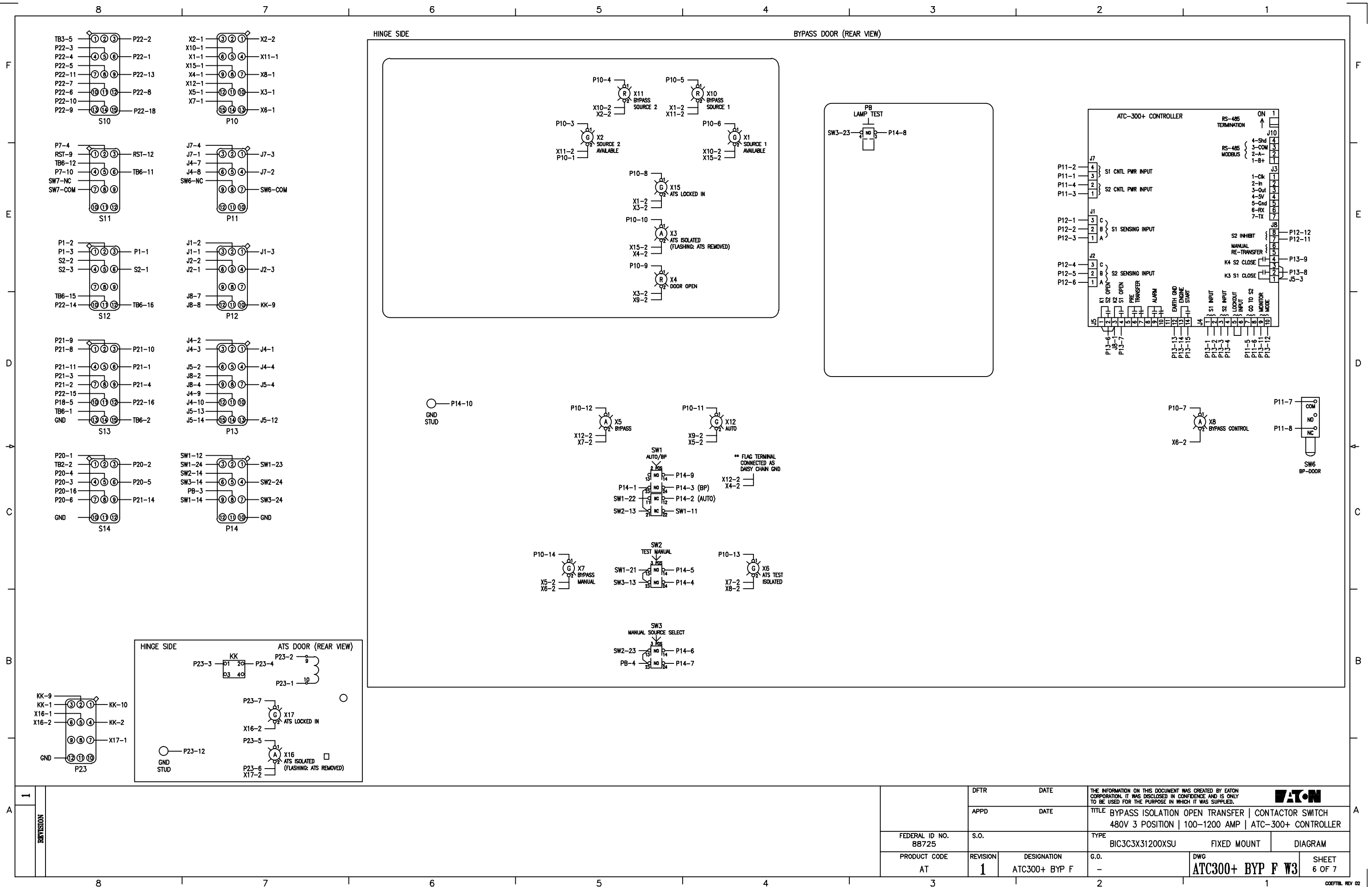
CUSTOMER TERMINAL BLOCK CONNECTIONS (MOUNTED IN BYPASS CONTACTOR COMPARTMENT)



BYPASS LOGIC PANEL (MOUNTED BEHIND XMFR BOX IN CONTACTOR COMPARTMENT)



REVISION	1	DFTR	DATE	THE INFORMATION ON THIS DOCUMENT WAS CREATED BY EATON CORPORATION. IT WAS DISCLOSED IN CONFIDENCE AND IS ONLY TO BE USED FOR THE PURPOSE IN WHICH IT WAS SUPPLIED.	
		APPD	DATE	TITLE BYPASS ISOLATION OPEN TRANSFER CONTACTOR SWITCH	
		FEDERAL ID NO. 88725	S.O.	TYPE BIC3C3X31200XSU FIXED MOUNT DIAGRAM	
		PRODUCT CODE AT	REVISION 1	DESIGNATION ATC300+ BYP F	G.O. -

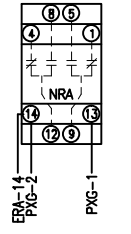


DFT		DATE	THE INFORMATION ON THIS DOCUMENT WAS CREATED BY EATON CORPORATION. IT WAS DISCLOSED IN CONFIDENCE AND IS ONLY TO BE USED FOR THE PURPOSE IN WHICH IT WAS SUPPLIED.	
APPD		DATE		
FEDERAL ID NO. 88725		S.O.	TITLE BYPASS ISOLATION OPEN TRANSFER CONTACTOR SWITCH 480V 3 POSITION 100-1200 AMP ATC-300+ CONTROLLER	
PRODUCT CODE AT		REVISION 1	DESIGNATION ATC300+ BYP F	TYPE BIC3C3X31200XSU FIXED MOUNT DIAGRAM G.O. - DWG ATC300+ BYP F W3 SHEET 6 OF 7

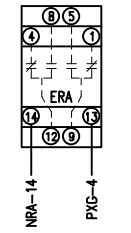
8 7 6 5 4 3 2 1

F F

OPTIONS (MOUNTED IN BYPASS CONTACTOR COMPARTMENT - RH SIDE SHELF)



14G NORMAL SOURCE AVAILABLE



14H EMERGENCY SOURCE AVAILABLE

D D

C C

B B

1

REVISION	FEDERAL ID NO. 88725		S.O.		DATE		THE INFORMATION ON THIS DOCUMENT WAS CREATED BY EATON CORPORATION. IT WAS DISCLOSED IN CONFIDENCE AND IS ONLY TO BE USED FOR THE PURPOSE IN WHICH IT WAS SUPPLIED.
	PRODUCT CODE AT		REVISION 1		DATE		
			DESIGNATION ATC300+ BYP F		DATE		
					DATE		

FEDERAL ID NO. 88725		S.O.		DATE	
PRODUCT CODE AT		REVISION 1		DATE	
		DESIGNATION ATC300+ BYP F		DATE	
				DATE	

TITLE BYPASS ISOLATION OPEN TRANSFER CONTACTOR SWITCH 480V 3 POSITION 100-1200 AMP ATC-300+ CONTROLLER		
TYPE	FIXED MOUNT	DIAGRAM
G.O.	-	
DWG	ATC300+ BYP F W4	
SHEET 7 OF 7		



8 7 6 5 4 3 2 1

A A