

ATVILDA30400XSU

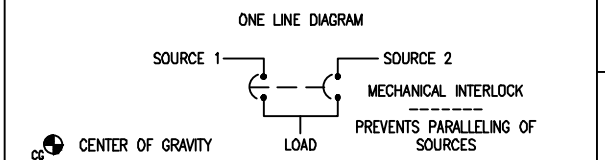
AUTOMATIC TRANSFER BREAKER SWITCH
 ATC-600 CONTROL, LD BREAKER
 S1 (MCS) S2 (MCS) FIXED MOUNTED
 3 POLE, 400 AMPS
 480/277V 60HZ, 3 PHASE, 4 WIRE
 TYPE-1 ENCLOSURE, UL 1008 LISTED

FEATURES INCLUDED:

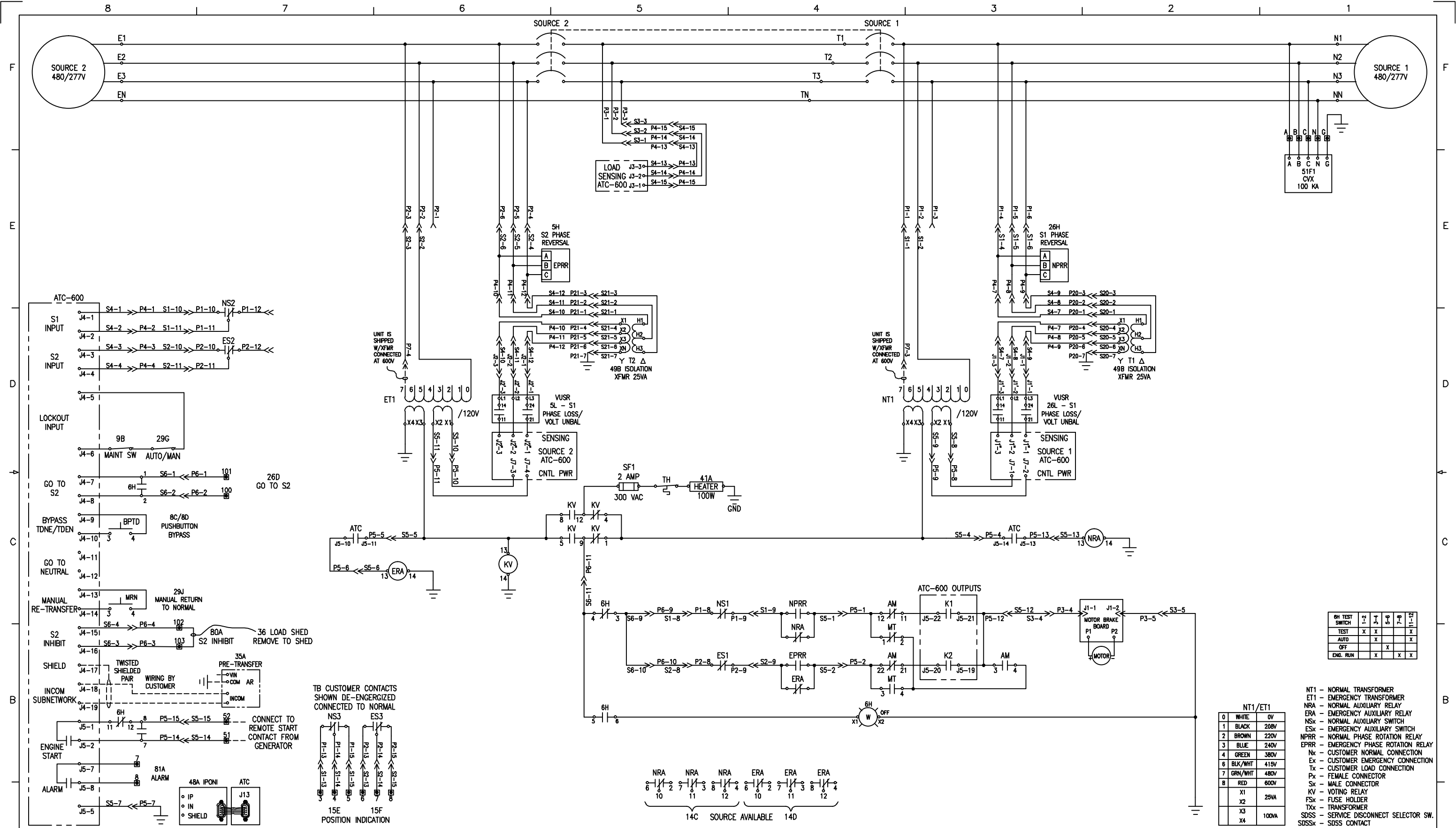
- 1A TIME DELAY NORMAL TO EMERGENCY ADJ 0-1800 sec
- 2A TIME DELAY ENGINE START ADJ 0-120 sec
- 3A TIME DELAY EMERGENCY TO NORMAL ADJ 0-1800 sec
- 4A TIME DELAY ENGINE COOL-OFF ADJ 0-1800 sec
- 5H EMERGENCY (S2) SENSING PHASE REVERSAL
- 5J EMERGENCY (S2) SENSING ALL PHASE UNDERVOLTAGE/UNDER FREQ
- 5K EMERGENCY (S2) SENSING ALL PHASE OVERVOLTAGE/OVER FREQ
- 5L EMERGENCY (S2) SENSING ALL PHASE VOLTAGE UNBALANCE & PHASE LOSS
- 6B ENGINE TEST PUSHBUTTON
- 6H MAINTAINED 4 POSITION TEST SWITCH
- 7A TIME DELAY ENGINE FAIL ADJ 0-6 sec
- 8C TIME DELAY BYPASS EMERGENCY TO NORMAL
- 8D TIME DELAY BYPASS NORMAL TO EMERGENCY
- 9B MAINTENANCE SELECTOR SWITCH ISOLATES ELEC. OP.
- 10B SOURCE SELECTOR-UTILITY TO UTILITY OR UTILITY TO GENERATOR
- 10D SOURCE SELECTOR-GENERATOR TO GENERATOR
- 12C LED INDICATION NORMAL (S1) CONNECTED
- 12D LED INDICATION EMERGENCY (S2) CONNECTED
- 12G LED INDICATION NORMAL (S1) AVAILABLE
- 12H LED INDICATION EMERGENCY (S2) AVAILABLE
- 14C AUX RELAY CONTACTS NORMAL (S1) AVAILABLE 4 FORM C
- 14D AUX RELAY CONTACTS EMERGENCY (S2) AVAILABLE 4 FORM C
- 15E POSITION INDICATION CONTACT NORMAL (S1) AVAILABLE 1 FORM C
- 15F POSITION INDICATION CONTACT EMERGENCY (S2) AVAILABLE 1 FORM C
- 23J PLANT EXERCISER 7 DAY LOAD/NO LOAD 0-600 min
- 26D GO TO EMERGENCY (S2) INPUT
- 26H NORMAL (S1) SENSING PHASE REVERSAL
- 26J NORMAL (S1) SENSING ALL PHASE UNDERVOLTAGE/UNDER FREQ
- 26K NORMAL (S1) SENSING ALL PHASE OVERVOLTAGE/OVER FREQ
- 26L NORMAL (S1) SENSING ALL PHASE VOLTAGE UNBALANCE & PHASE LOSS
- 29G SELECTABLE AUTOMATIC OR NON-AUTOMATIC OPERATION
- 29J SELECTABLE AUTOMATIC OR NON-AUTOMATIC RETRANSFER w/FAILSAFE
- 32A TIME DELAY NEUTRAL ADJUSTABLE 0 - 120 sec
- 35A PRETRANSFER SIGNAL CONTACTS 1 FORM C
- 36 LOAD SHED FROM EMERGENCY (S2) INHIBIT
- 37 GO TO "ISOLATED" POSITION (NOT SE RATED)
- 41A 100 WATT SPACE HEATER WITH THERMOSTAT
- 42 IBC/CBC SEISMIC QUALIFIED
- 45B LOAD SEQUENCING CONTACTS (2)
- 48A COMMUNICATIONS IPOM
- 48R REMOTE ANNUNCIATOR
- 49B SENSING ISOLATION TRANSFORMER
- 49C MULTI-TAP VOLTAGE TRANSFORMER
- 51F1 100kA SURGE DEVICE NORMAL (S1)
- 80A EMERGENCY (S2) INHIBIT CONTACT
- 81A GENERAL ALARM INDICATION CONTACT

REQUIRED FOR SEISMIC, RECOMMENDED FOR ALL APPLICATIONS:
 USE 4, 1/2-13 UNC GRADE 5 OR BETTER HEX HEAD BOLTS AND WASHERS.
 THESE BOLTS ARE TO BE TORQUED TO 75 FT. LBS. (102 NM).

- NOTES:
- 1 APPROXIMATE SHIPPING WEIGHT = 425 LBS [193 KG]
 - 2 DIMENSIONS SHOWN IN INCHES [MILLIMETERS]
 - 3 AUTOMATIC, NON-AUTOMATIC, MANUAL AND SERVICE ENTRANCE CONTROLS PROVIDED BASED ON CUSTOMER ORDER INFORMATION.
 - 4 IF A GROUND FAULT SENSING SYSTEM WAS ORDERED, A WINDOW CT AND GFR RELAY ARE PROVIDED. INSTALLER TO ROUTE ALL LOAD PHASE AND NEUTRAL CONDUCTORS THROUGH WINDOW CT WITH 'H1' AND 'X1' MARKINGS FACING
 - 5 FOR SWITCHED NEUTRAL APPLICATIONS, CONNECT TO TERMINALS MARKED 'NN', 'EN', AND 'LN'. NEUTRAL ASSEMBLY WILL NOT BE PROVIDED.

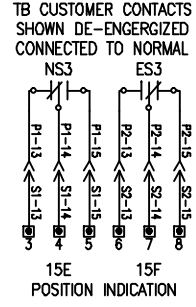
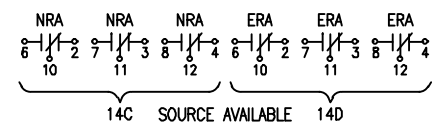


| | | | | |
|----------------|-------------------------|----------------------|--|------------------|
| 01 REVISION | DFTR JODY GRABOWSKI | DATE 9/16/2010 | THE INFORMATION ON THIS DOCUMENT WAS CREATED BY EATON CORPORATION. IT WAS DISCLOSED IN CONFIDENCE AND IS ONLY TO BE USED FOR THE PURPOSE IN WHICH IT WAS SUPPLIED. | |
| | APPD | DATE | TITLE AUTOMATIC TRANSFER BREAKER SWITCH 600V OT 400 AMP ATC-600 CONTROLLER | |
| | FEDERAL ID NO. 88725 | S.O. T5730915G001 | TYPE ATVILDA30400XSU | OUTLINE |
| | PRODUCT CODE AT | REVISION 01 | G.O. - | DWG ATC800 01 |



| GH TEST SWITCH | 1 | 2 | 3 | 4 | 5 | 6 | 7 | 8 |
|----------------|---|---|---|---|---|---|---|---|
| TEST | X | X | X | X | X | X | X | X |
| AUTO | X | X | X | X | X | X | X | X |
| OFF | X | X | X | X | X | X | X | X |
| END. RUN | X | X | X | X | X | X | X | X |

| NT1/ET1 | |
|---------|---------------|
| 0 | WHITE 0V |
| 1 | BLACK 208V |
| 2 | BROWN 220V |
| 3 | BLUE 240V |
| 4 | GREEN 380V |
| 6 | BLK/WHIT 415V |
| 7 | GRN/WHIT 480V |
| 8 | RED 600V |
| X1 | 25VA |
| X2 | 25VA |
| X3 | 100VA |
| X4 | 100VA |



- NT1 - NORMAL TRANSFORMER
- ET1 - EMERGENCY TRANSFORMER
- NRA - NORMAL AUXILIARY RELAY
- ERA - EMERGENCY AUXILIARY RELAY
- NSx - NORMAL AUXILIARY SWITCH
- ESx - EMERGENCY AUXILIARY SWITCH
- NPRR - NORMAL PHASE ROTATION RELAY
- EP - EMERGENCY PHASE ROTATION RELAY
- Nx - CUSTOMER NORMAL CONNECTION
- Ex - CUSTOMER EMERGENCY CONNECTION
- Tx - CUSTOMER LOAD CONNECTION
- Px - FEMALE CONNECTOR
- Sx - MALE CONNECTOR
- KV - VOTING RELAY
- FSx - FUSE HOLDER
- TXx - TRANSFORMER
- SDSS - SERVICE DISCONNECT SELECTOR SW.
- SDSSx - SDSS CONTACT

| | | | | |
|-------------|-------------------------|----------------------|--|-------------------------|
| 01 REVISION | DFTR JODY GRABOWSKI | DATE 9/16/2010 | THE INFORMATION ON THIS DOCUMENT WAS CREATED BY EATON CORPORATION. IT WAS DISCLOSED IN CONFIDENCE AND IS ONLY TO BE USED FOR THE PURPOSE IN WHICH IT WAS SUPPLIED. | |
| | APPD | DATE | TITLE AUTOMATIC TRANSFER BREAKER SWITCH 600V OT 400 AMP ATC-600 CONTROLLER | |
| | FEDERAL ID NO. BB725 | S.O. T5730915G001 | TYPE ATVILDA30400XSU | SHEET 2 OF 2 |
| | PRODUCT CODE AT | REVISION 01 | G.O. | DWG ATC800 S1 |