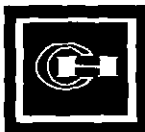
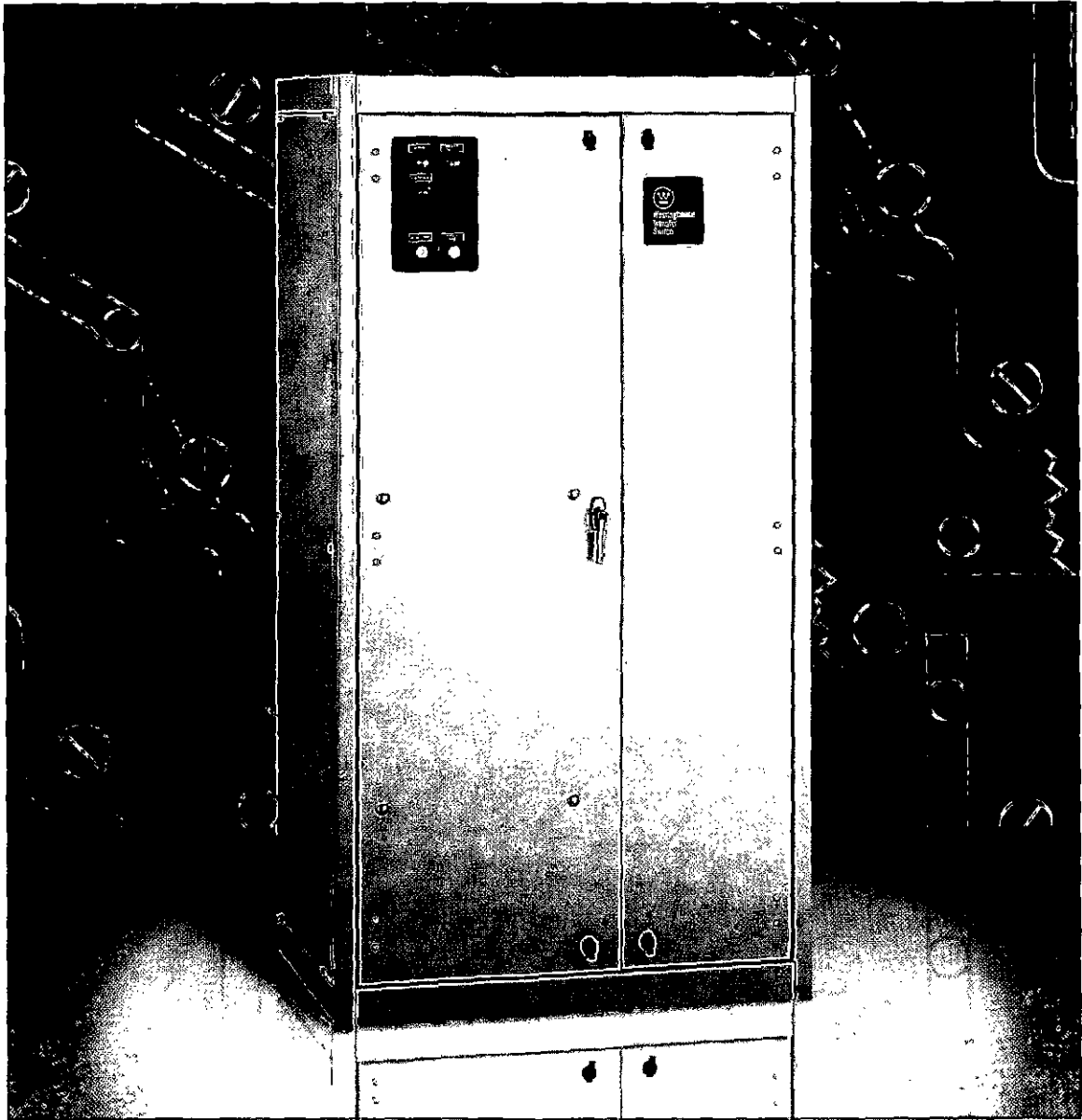


Westinghouse Transfer Switch Equipment

Mini-SPB Transfer Switches
600-1200 Amperes

Our rugged line of Mini-SPB Transfer Switches combines compact size with superior system coordination and safe operation under full load.



Cutler-Hammer

EATON

Westinghouse Transfer Switch Equipment

Switch Application Section

Westinghouse Mini-SPB Transfer Switches are designed for applications where size and total system coordination must be accomplished while achieving a high level of Withstand, Interrupting and Closing Values.

Westinghouse Mini-SPB Switches meet or exceed all industry standards for endurance, reliability and performance. They are listed under Underwriters Laboratories UL 1008 Standard for Transfer Switch Equipment. With certain options they also comply with emergency and standby system requirements as defined in NFPA 99 for health care facilities.

DESIGN HIGHLIGHTS

- Superior main contact structure
- Safe to manually transfer under full load
- Modular solid state logic
- Multi-tap voltage selection plug
- Front accessibility

Westinghouse Transfer Switch Equipment offers flexibility and versatility to the system designer and user. All switches include the basic features necessary for normal operation as standard (see listing below). Cutler-Hammer also offers an extensive array of optional features/accessories that

allows the user to customize a new transfer switch to any particular application. Select the appropriate catalog number for the application from the information below. Then choose any optional features/accessories needed to complete the project requirements.

CATALOG NUMBER						
SWITCH TYPE	ARRANGEMENT NORMAL/ EMERGENCY	NUMBER OF SWITCHED POLES	SWITCH RATING	VOLTAGE/ FREQUENCY	ENCL. TYPE	UL
ATVSSP	A = Switch/ Switch	2 = 2 Pole	0600 = 600A	A = 120/60	S-Type 1	U
NTVSSP	B = Breaker/ Breaker C = Breaker/ Switch D = Switch/ Breaker	3 = 3 Pole	0800 = 800A	B = 208/60		
		4 = 4 Pole	1000 = 1000A	E = 600/60		
			1200 = 1200A	G = 220/50/60		
				H = 380/50		
				K = 600/50		
				M = 230/50		
				N = 401/50		
				O = 415/50		
				W = 240/60		
				X = 480/60		
				Z = 365/50		

SYSTEMS COORDINATION INFORMATION

STANDARD WITHSTAND, CLOSING & INTERRUPTING RATINGS (SEE NOTES)

AMPERE RATING	Rating when used with upstream breaker (kA)			Rating when used with upstream fuse (kA)		
	240V	480V	600V	MAX. FUSE RATING	FUSE TYPE	600V
600	85	65	65	800	L	200
800	85	65	65	1000	L	200
1000	85	65	65	1600	L	200
1200	85	65	65	1600	L	200

NOTES:

Tested in accordance with UL 1008

Westinghouse Mini-SPB Switches will coordinate with a power circuit breaker's short time rating. Contact factory for details.

**FOR ADDITIONAL INFORMATION
ON WESTINGHOUSE TRANSFER
SWITCHES:**

Bypass Isolation Transfer Switches 800-3000 Amperes	B 1221
ATS Solid State Logic	SA 12075
ATS Relay Logic	SA 12076
ATS Renewal Parts Catalog	SA 12077
Automatic, Manual, Non-Automatic Transfer Switches Vertical Design 150-1000 Amperes	B 1223
Automatic, Manual, Non-Automatic Transfer Switches 30-4000 Amperes	PL 29-920
Automatic, Manual, Non-Automatic Transfer Switches 30-4000 Amperes	TB 29-925
ATS Renewal Parts Price List	PL 29-995
Combination Bypass Isolation and Automatic Transfer Switches 100-1000 Amperes	SA 11844
Drawout Transfer Switches 800-4000 Amperes	SA 11873

This brochure is published solely for information purposes and should not be considered all-inclusive. If further information is required, you should consult your nearest Cutler-Hammer salesperson.

Sale of product shown in this literature is subject to terms and conditions outlined in appropriate Cutler-Hammer selling policies or other contractual agreement between the parties. This literature is not intended to and does not enlarge or add to any such contract. The sole source governing the rights and remedies of any purchaser of this equipment is the contract between the purchaser and Cutler-Hammer.

NO WARRANTIES, EXPRESSED OR IMPLIED, INCLUDING WARRANTIES OF FITNESS FOR A PARTICULAR PURPOSE OR MERCHANTABILITY, OR WARRANTIES ARISING FROM COURSE OF DEALING OR USAGE OF TRADE, ARE MADE REGARDING THE INFORMATION, RECOMMENDATIONS AND DESCRIPTIONS CONTAINED HEREIN.

In no event will Cutler-Hammer be responsible to the purchaser or user in contract, in tort (including negligence), strict liability or otherwise for any special, indirect, incidental or consequential damage or loss whatsoever, including but not limited to damage or loss of use of equipment, plant or power system, cost of capital, loss of power, additional expenses in the use of existing power facilities, or claims against the purchaser or user by its customers resulting from the use of the information, recommendations and descriptions contained herein.

Cutler-Hammer

**Westinghouse &
Cutler-Hammer Products**

Five Parkway Center
Pittsburgh, PA 15220
(412) 937-6100

Functional and Operational Capabilities of the Mini-SPB Transfer Switch

The overall design criteria employed by Westinghouse is to provide a transfer switch combination that offers the utmost in flexibility, reliability and value. The Westinghouse Mini-SPB Transfer Switch meets or exceeds or is designed and built in accordance with the following:

UL 1008 *Standard for Safety for Automatic Transfer Switches*

UL 489 *Standard for Circuit Breakers*

UL 1087 *Standard for Molded Case Switches*

NEC *Articles 517, 700, 701, 702*

ANSI/NFPA 70

NFPA 110 *Emergency and Standby Power Systems*

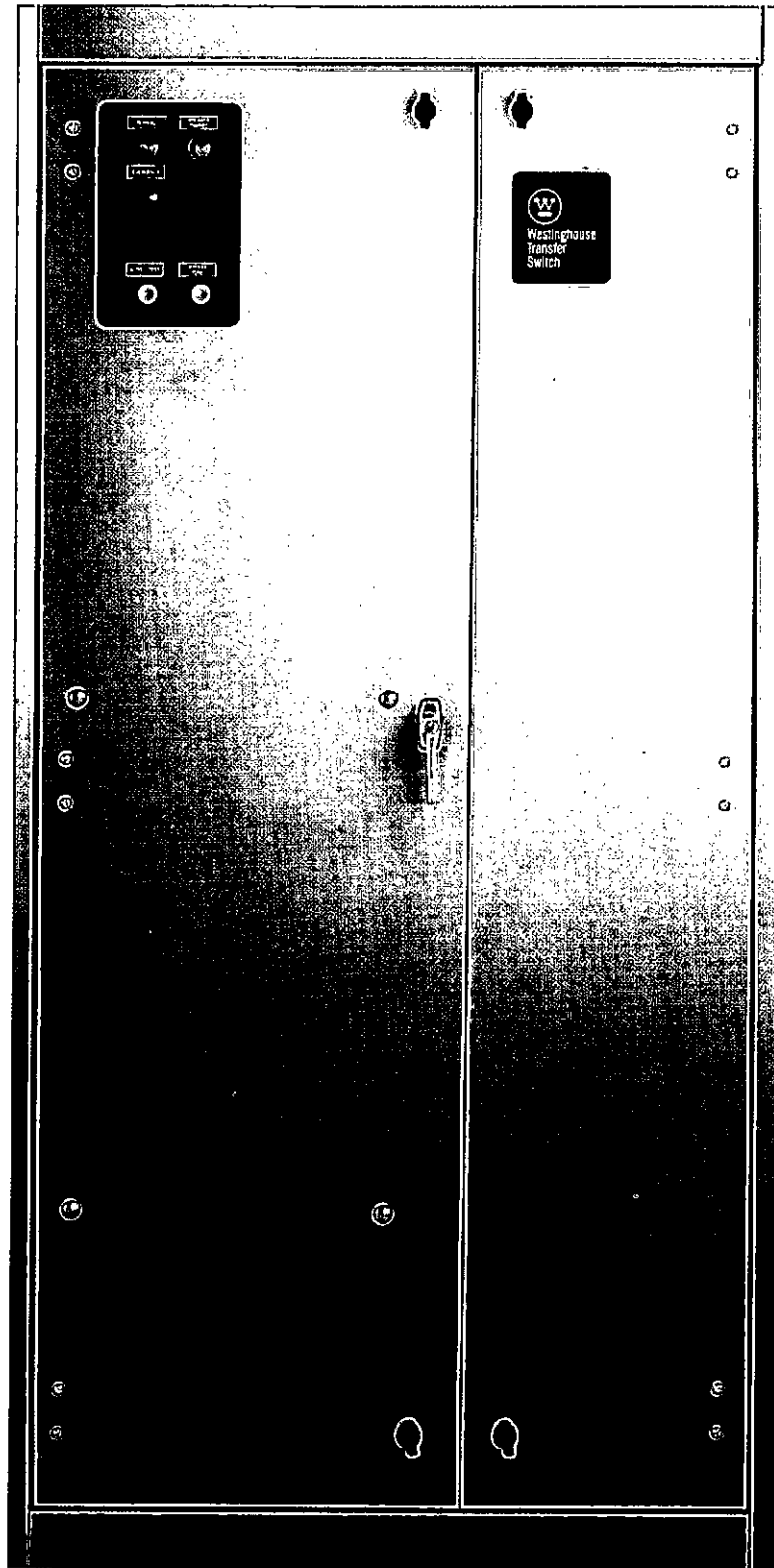
NFPA 99 *Health Care Facilities*

EGSA *Standard for Transfer Switches*

NEMA *ICS 2-447.10*

UBC *Uniform Building Code for Seismic Zone 4*

ISO 9000 *International Organization for Standardization*

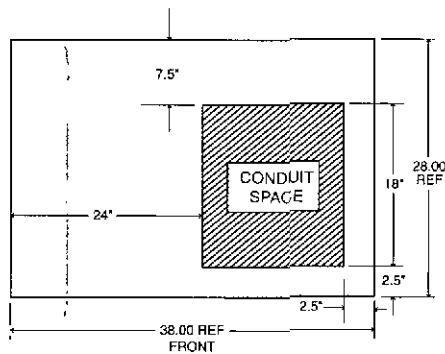


Catalog Number: ATVSSPB31200XSU
1200 ampere, 3 pole, Mini-SPB Transfer Switch

Dimensions Enclosed Units

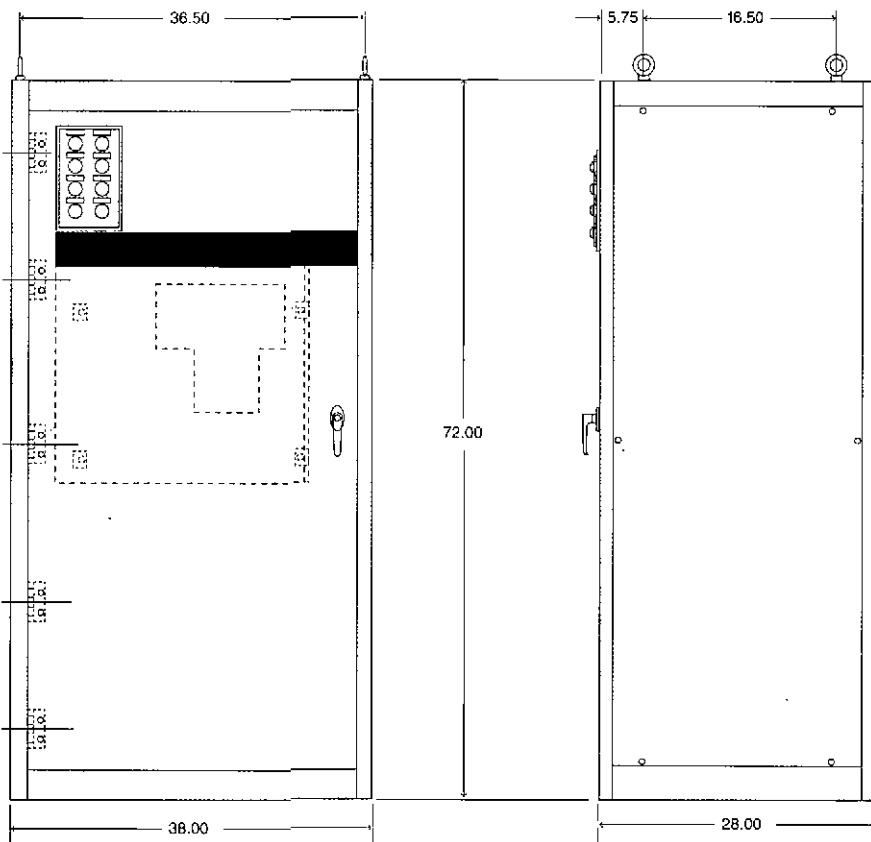
All Westinghouse enclosures are constructed of high quality, 12 gauge steel and include a key lockable door handle as standard equipment. Enclosures for Westinghouse Mini-SPB are freestanding Type 1 meeting all current applicable NEMA and UL standards for conduit entry, cable bending, gutter space and shielding of live components. See chart below for approximate enclosure dimensions.

Dimensions are approximate and should not be used for construction purposes.

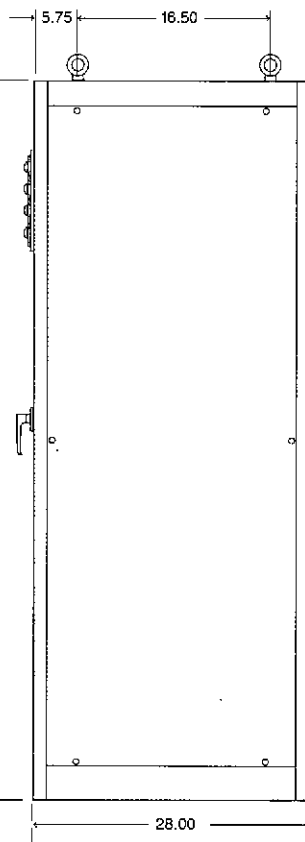


Top View

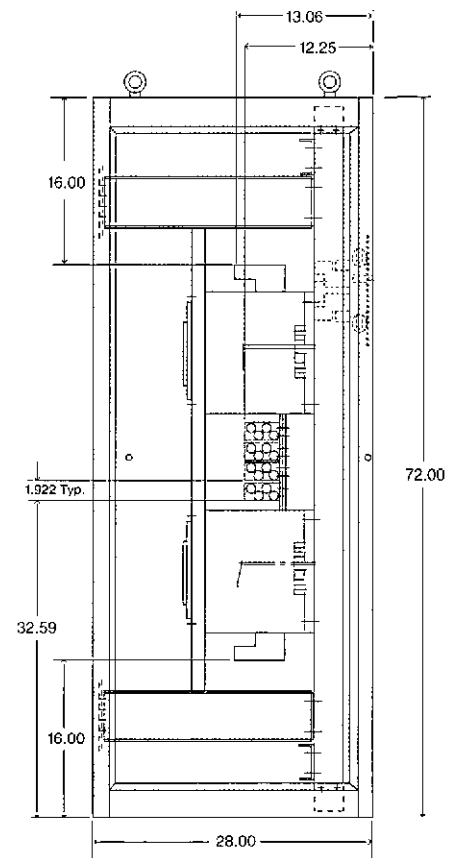
	Approximate Shipping Weight (lbs.)
3 Pole, 600-1200A	850
4 Pole, 600-1200A	950



Front View



Side View



Features and Benefits

SUPERIOR MAIN CONTACT STRUCTURE

1. The Westinghouse Mini-SPB Transfer Switch meets or exceeds the standards set forth in UL 1008, UL 1087 and UL 489 with the high withstand, totally enclosed Pow-R switches. No other transfer switch manufacturer has met the rigid testing requirements of this combination of standards. Completely enclosed contacts add a measure of safety and reliability. It also ensures the integrity of the contact assemblies and minimizes the need for periodic maintenance of the contacts, reducing *downtime and maintenance time*.
2. The Westinghouse Mini-SPB Transfer Switch provides a fully rated solid neutral for all 2 and 3 pole switches. All 4 pole switches are supplied with switched neutral contacts of identical construction and rating as the power poles and are mounted on the power contact shaft integral to the completely enclosed contact assemblies.

FAST, POWERFUL AND SAFE SWITCHING MECHANISM

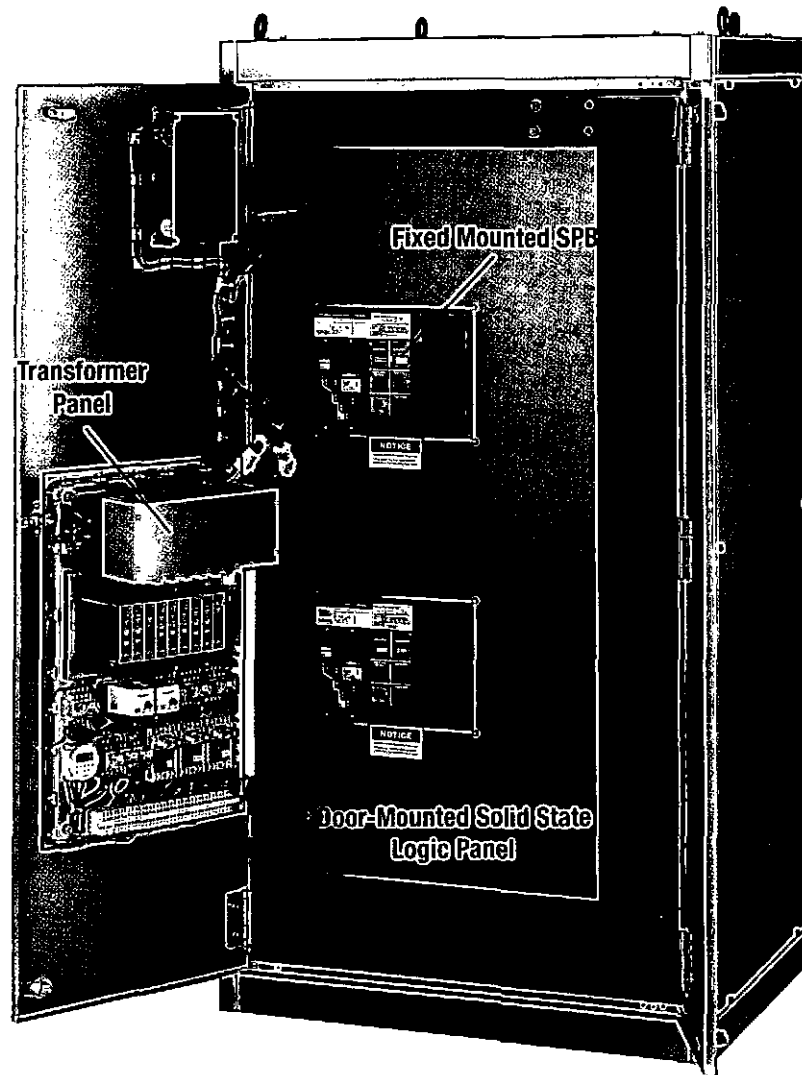
1. The mechanism utilizes a high speed, stored energy switching mechanism. This mechanism is able to be operated manually under a FULL LOAD.
2. With both mechanical and electrical interlocking the Westinghouse Mini-SPB offers no chance of a dangerous paralleling of sources.

RELIABLE SOLID STATE LOGIC

1. The intelligence panel utilizes the reliable, close differential sensing Westinghouse Modular Solid State Logic Package. This gives the system designer the opportunity to tailor the product to any particular application as well as providing the capability of upgrading logic components in the field as needed.
2. A wide range of field installable option kits are available with retention of UL label.
3. The Westinghouse Mini-SPB Transfer Switch offers a Multi-Tap voltage selection plug. This provides line voltage selection of 208, 220, 240, 380, 415, 480 or 600 VAC (50-60 Hz).
4. Keyed Quick Disconnect plugs are provided to completely isolate the control circuitry for maintenance purposes.

EASE OF COORDINATION AND APPLICATION

1. The Westinghouse Mini-SPB is easily coordinated with any system power or air circuit breaker. The SPB switches have been tested to withstand a short circuit for up to 60 cycles. With optionally added overcurrent protection, the Westinghouse ATVSSP offers the greatest flexibility in system coordination of any transfer switch design.
2. The design of this switch allows front cable access. This allows for the minimum amount of space to be used in applying this product.
3. The Engine Starting Contacts provide a 10A, 30VDC contact closure to initiate engine starting upon failure of the Normal Power Source. This feature, specifically designed for low current applications, is wired to the only Red Terminal Blocks on the control panel for ease of identification and maintenance.



Catalog Number: ATVSSPB31200XSU
1200 ampere, 3 pole, Mini-SPB Transfer Switch