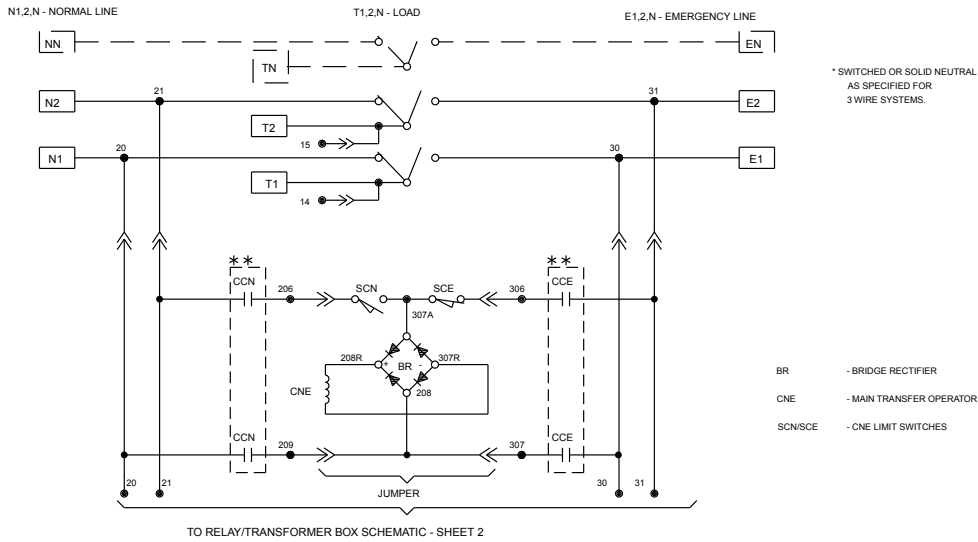


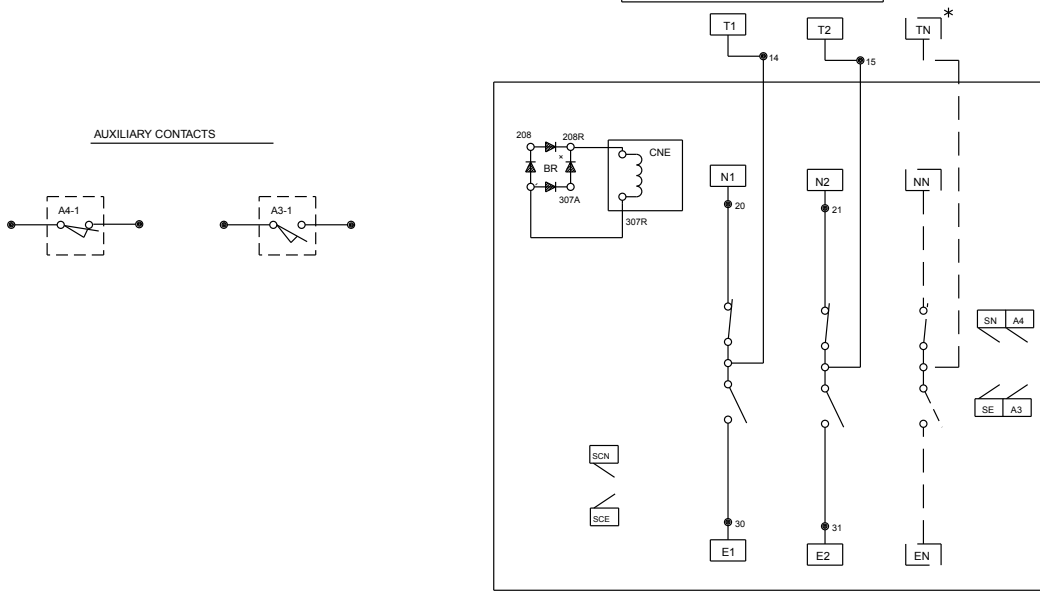
ATS POWER CIRCUIT SCHEMATIC

REVISIONS			
REV.	DESCRIPTION	DATE	APPROVED
G	S-7543	10/03/00	SG SB

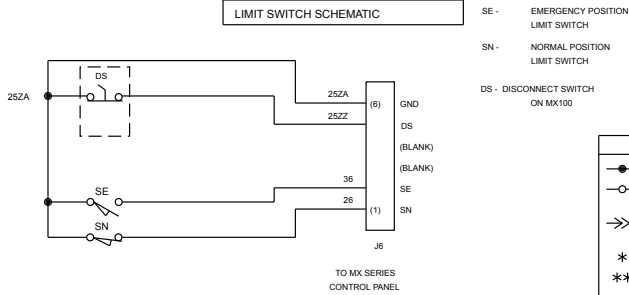


TO RELAY/TRANSFORMER BOX SCHEMATIC - SHEET 2

ATS POWER PANEL LAYOUT



LIMIT SWITCH SCHEMATIC

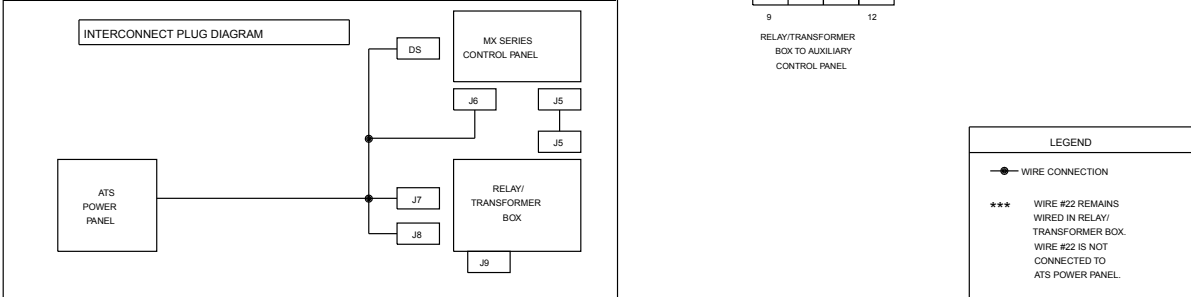
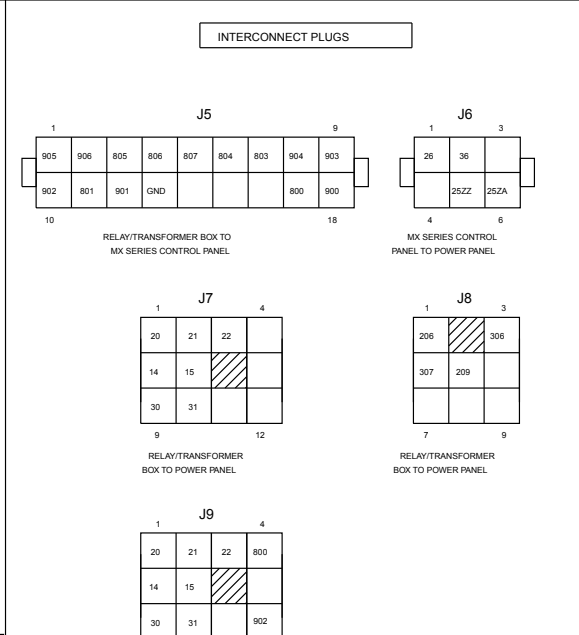
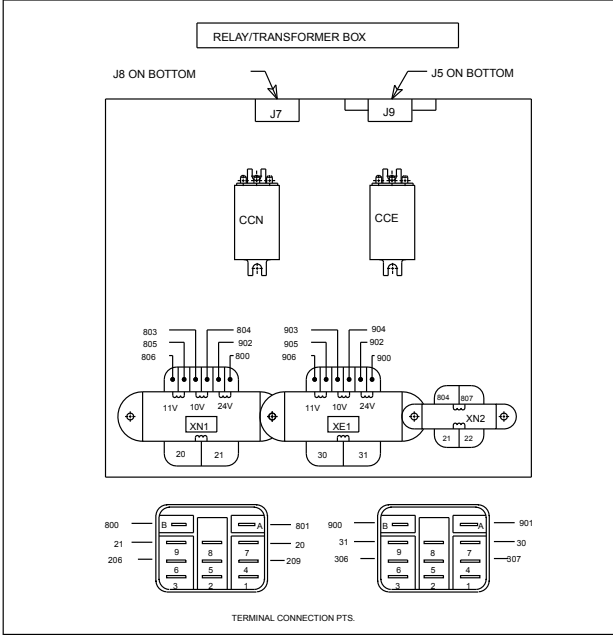
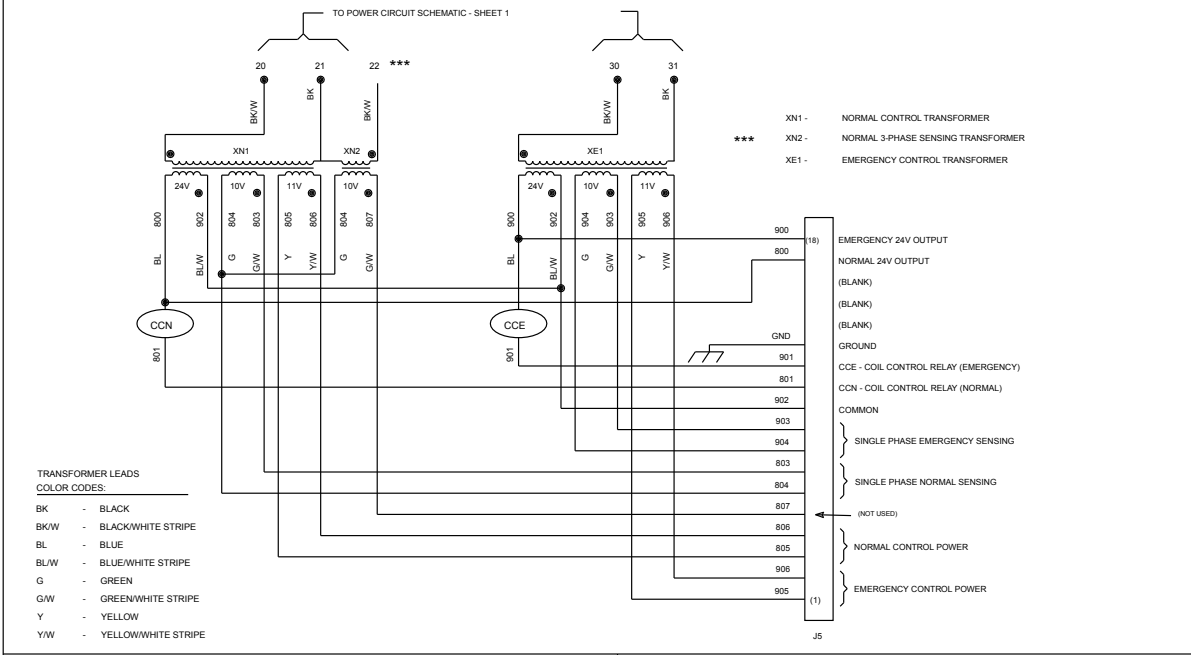


TO MX SERIES CONTROL PANEL

LEGEND	REFERENCE	NOTES
● WIRE CONNECTION	LEGEND, OPERATION, AND ACCESSORIES: 52A-0900	ATS SHOWN IN NORMAL POSITION WITH NO POWER AVAILABLE.
○ WIRE ON TERMINAL BLOCK	FOR PRODUCTION ONLY: R/T BOX AND PLUGS - SEE SHT 2	
→ WIRE IN INTERCONNECT PLUG	MX100 CONTROLLER - 50A-1000	
* OPTIONAL		
** LOCATED ON RELAY/ TRANSFORMER BOX		

<p>GE PROPRIETARY AND CONFIDENTIAL INFORMATION</p> <p>This document is the property of General Electric ("GE") and contains proprietary information of GE. This document is loaned on the express condition that neither it nor the information contained therein shall be disclosed to others without the express written consent of GE Industrial Systems, and that the information shall be used by the recipient only as approved expressly by GE Industrial Systems. This document shall be returned to GE upon its request. This document may be subject to certain restrictions under U.S. export controls laws and regulations.</p>	<p>FOR ADDITIONAL INFO REFER TO</p> <p>APPROVED PRACTICES</p> <p>VALUES (DIMENSIONS SPECIFIED UNLESS OTHERWISE INDICATED)</p> <p>TOLERANCES UNLESS OTHERWISE SPECIFIED</p> <p>2 PL. DECIMALS ± .020</p> <p>3 PL. DECIMALS ± .005</p> <p>ANGLES ± 1°</p> <p>FRACTIONS ± 1/64</p> <p>FINISH</p> <p>AutoCad Generated</p>	<p>SIGNATURES</p> <p>MODEL: SB</p> <p>CHECKED:</p> <p>ENGINEER:</p> <p>DRAWING FILE:</p> <p>MODELS / ASSEMBLY FILE: ZTG(2/3)K3-22 (30-225A), 2</p> <p># CTDN</p>	<p>DATE</p> <p>06/09/97</p> <p>DETAIL:</p> <p>ISSUED:</p> <p>CRITICAL TO QUALITY CHARACTERISTICS</p>	<p>TITLE</p> <p>ATS POWER CIRCUIT & LIMIT SWITCHES</p> <p>FIRST MADE FOR:</p> <p>SIZE: B</p> <p>CAGE CODE:</p> <p>DWG NO: 52A-7001</p>
	<p>THIRD ANGLE PROJECTION</p>	<p>SCALE: -</p> <p>SHEET 1 OF 2</p>		

REVISIONS			
REV.	DESCRIPTION	DATE	APPROVED
G	S-7543	10/03/00	SG SB



<p>GE PROPRIETARY AND CONFIDENTIAL INFORMATION</p> <p>This document is the property of General Electric ("GE") and contains proprietary information of GE. This document is loaned on the express condition that neither it nor the information contained therein shall be disclosed to others without the express written consent of GE Industrial Systems, and that the information shall be used by the recipient only as approved expressly by GE Industrial Systems. This document shall be returned to GE upon its request. This document may be subject to certain restrictions under U.S. export controls laws and regulations.</p>	<p>FOR ADDITIONAL INFO REFER TO</p> <p>APPROVED PRACTICES</p> <p>UNLESS OTHERWISE SPECIFIED DIMENSIONS ARE IN INCHES</p>	<p>SIGNATURES</p> <p>MODEL: SB</p> <p>DETAIL:</p> <p>CHECKED:</p> <p>ENGRG:</p> <p>MFG:</p> <p>QUALITY:</p> <p>ISSUED:</p>	<p>DATE</p> <p>06/09/97</p>	<p>GE</p> <p>TITLE</p> <p>RELAY/XFR BOX & INTERCONNECT PLUGS</p> <p>FIRST MADE FOR:</p> <p>SIZE: B CAGE CODE: DWG NO: 52A-7001</p> <p>SCALE: - SHEET 2 OF 2</p>
	<p>THIRD ANGLE PROJECTION</p>	<p>TOLERANCES UNLESS OTHERWISE SPECIFIED</p> <p>2 PL. DECIMALS ± 0.020</p> <p>3 PL. DECIMALS ± 0.005</p> <p>ANGLES ± 1°</p> <p>FRACTIONS ± 1/64</p> <p>FINISH</p> <p>AutoCad Generated</p>	<p>MODEL / ASSEMBLY FILE: ZTG(2/3)K3-22 (30-225A) 2F</p> <p># CTDN</p> <p>CRITICAL TO QUALITY CHARACTERISTIC</p>	