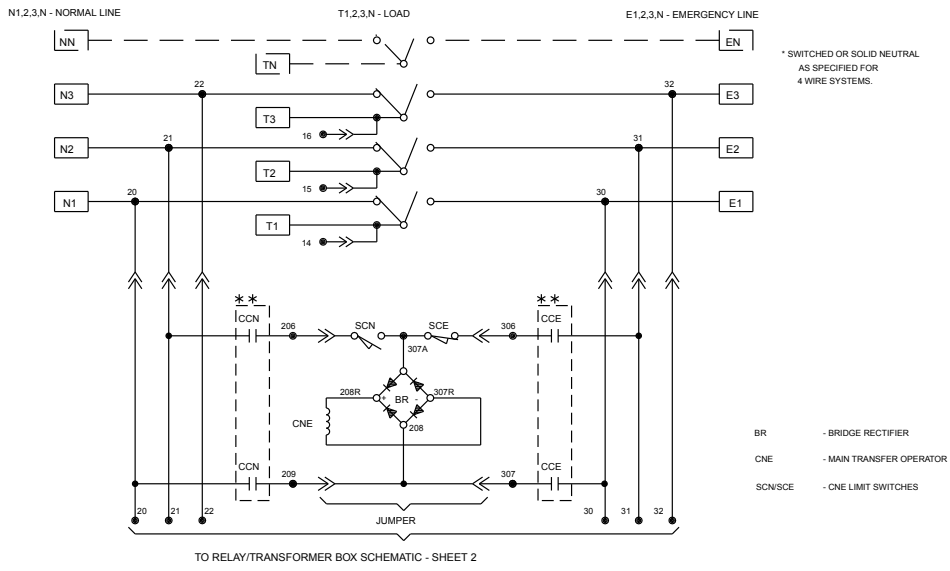
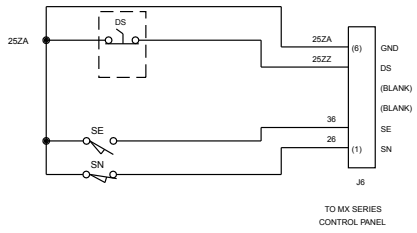
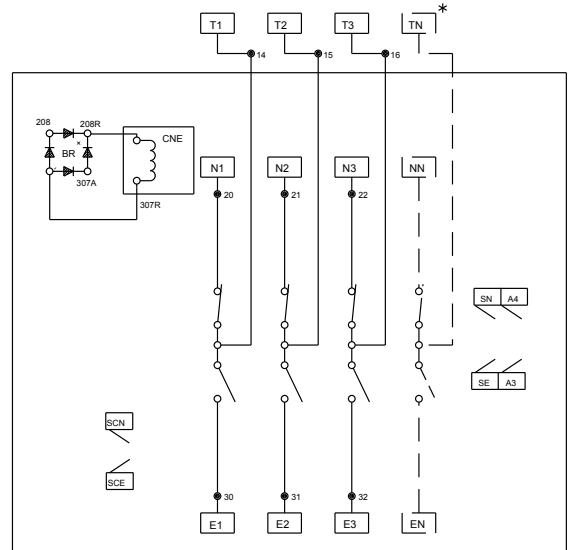
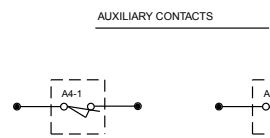


ATS POWER CIRCUIT SCHEMATIC

REVISIONS			
REV.	DESCRIPTION	DATE	APPROVED
F	S-7543	10/02/00	SG SB



ATS POWER PANEL LAYOUT



LIMIT SWITCH SCHEMATIC

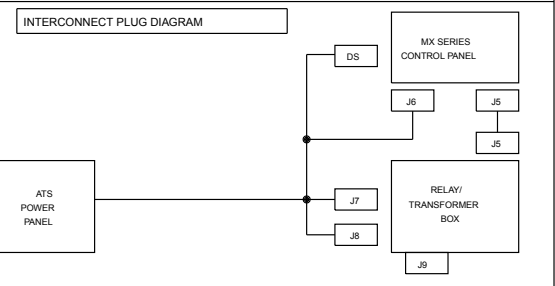
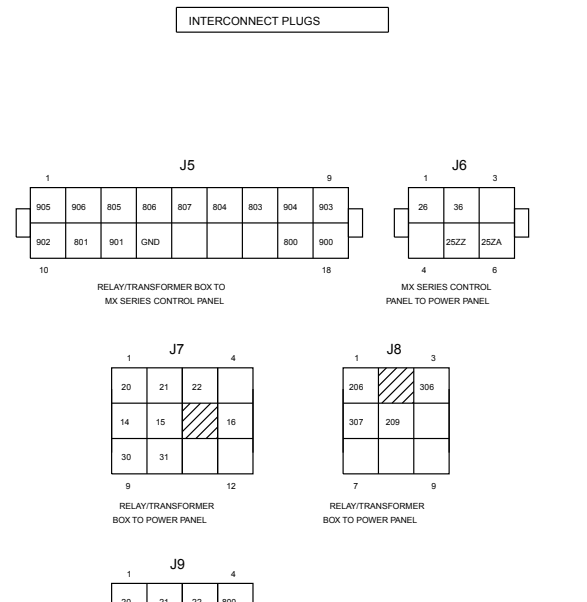
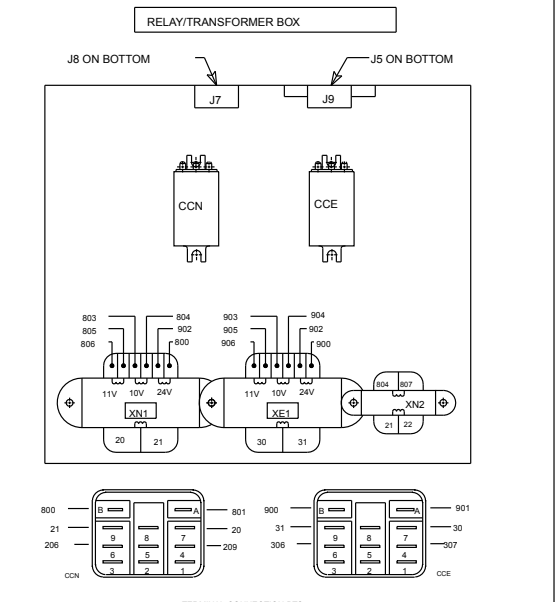
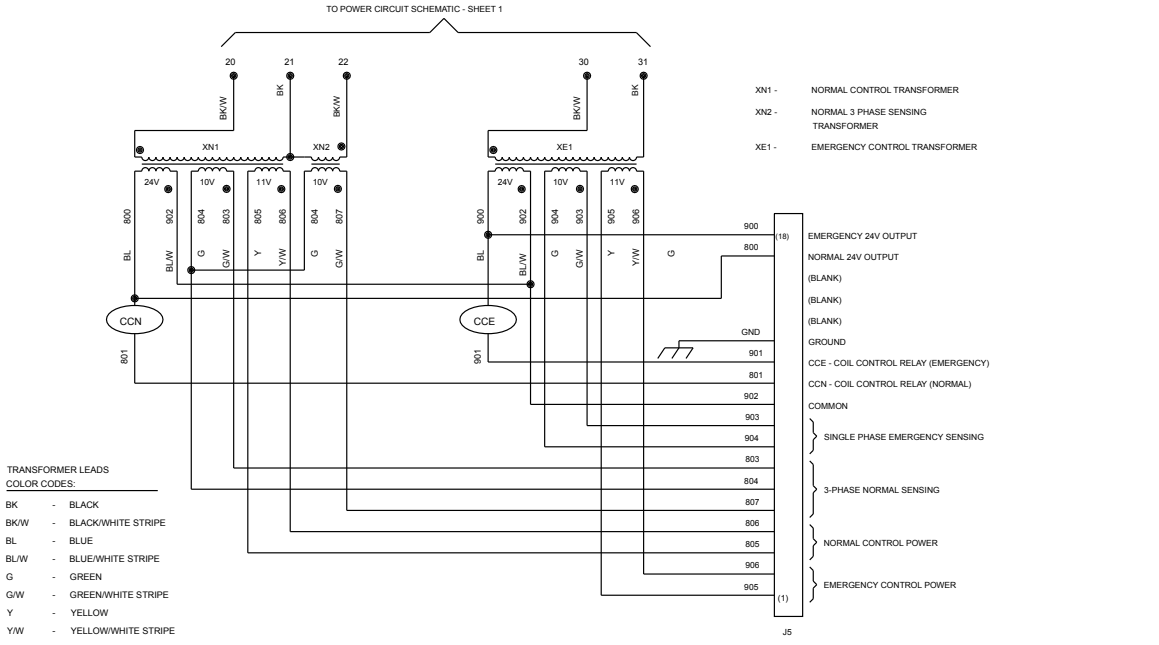
- SE - EMERGENCY POSITION LIMIT SWITCH
- SN - NORMAL POSITION LIMIT SWITCH
- DS - DISCONNECT SWITCH ON MX100

LEGEND	REFERENCE	NOTES
● WIRE CONNECTION	LEGEND, OPERATION, AND ACCESSORIES: 52A-0900 FOR PRODUCTION ONLY: R/T BOX AND PLUGS - SEE SHT 2 MX100 CONTROLLER - 50A-1000	ATS SHOWN IN NORMAL POSITION WITH NO POWER AVAILABLE.
○ WIRE ON TERMINAL BLOCK		
➤ WIRE IN INTERCONNECT PLUG		
* OPTIONAL		
** LOCATED ON RELAY/TRANSFORMER BOX		

<p>GE PROPRIETARY AND CONFIDENTIAL INFORMATION</p> <p>This document is the property of General Electric ("GE") and contains proprietary information of GE. This document is loaned on the express condition that neither it nor the information contained therein shall be disclosed to others without the express written consent of GE Industrial Systems, and that the information shall be used by the recipient only as approved expressly by GE Industrial Systems. This document shall be returned to GE upon its request. This document may be subject to certain restrictions under U.S. export controls laws and regulations.</p>	<p>FOR ADDITIONAL INFO REFER TO</p> <p>APPLIED PRACTICES</p> <p>UNLESS OTHERWISE SPECIFIED DIMENSIONS ARE IN INCHES</p> <p>TOLERANCES ON:</p> <p>2 PL. DECIMALS ± .020</p> <p>3 PL. DECIMALS ± .005</p> <p>ANGLES ± 1°</p> <p>FRACTIONS ± 1/64</p> <p>FINISH</p> <p>AutoCad Generated</p>	<p>SIGNATURES</p> <p>MODEL: SB</p> <p>DATE: 05/09/97</p> <p>CHECKED:</p> <p>ENGRD:</p> <p>MFG:</p> <p>QUALITY:</p> <p>ISSUED:</p> <p>DRAWING FILE:</p> <p>MODEL / ASSEMBLY FILE: ZTG(2/3)K3-22 (30-225A)</p> <p># CTOR</p>	<p>DATE</p> <p>05/09/97</p> <p>TITLE</p> <p>ATS POWER CIRCUIT & LIMIT SWITCHES</p> <p>FIRST MADE FOR:</p> <p>SIZE: B</p> <p>CAGE CODE: 52A-7000</p> <p>DWG NO: 52A-7000</p> <p>SCALE: -</p>	
	<p>THIRD ANGLE PROJECTION</p>	<p>CRITICAL TO QUALITY CHARACTERISTIC</p>	<p>GE</p>	<p>52A-7000</p>
	<p>AutoCad Generated</p>	<p>CRITICAL TO QUALITY CHARACTERISTIC</p>	<p>GE</p>	<p>52A-7000</p>
	<p>AutoCad Generated</p>	<p>CRITICAL TO QUALITY CHARACTERISTIC</p>	<p>GE</p>	<p>52A-7000</p>

RELAY/TRANSFORMER BOX SCHEMATIC

REVISIONS			
REV.	DESCRIPTION	DATE	APPROVED
F	S-7543	UPDATED DWG	10/02/00 SG SB



<p>GE PROPRIETARY AND CONFIDENTIAL INFORMATION</p> <p>This document contains information of GE ("GE") and contains proprietary information of GE. This document is loaned on the express condition that neither it nor the information contained therein shall be disclosed to others without the express written consent of GE Industrial Systems, and that the information shall be used by the recipient only as approved expressly by GE Industrial Systems. This document shall be returned to GE upon its request. This document may be subject to certain restrictions under U.S. export controls laws and regulations.</p>	<p>FOR ADDITIONAL INFO REFER TO</p> <p>APPLIED PRACTICES</p> <p>UNLESS OTHERWISE SPECIFIED DIMENSIONS ARE IN INCHES</p>	<p>SIGNATURES</p> <p>MODEL: SB</p> <p>DATE: 06/09/97</p>	<p>TITLE</p> <p>RELAY/XFR BOX & INTERCONNECT PLUGS</p>
	<p>TOLERANCES ON:</p> <p>2 PL. DECIMALS ± 0.020</p> <p>3 PL. DECIMALS ± 0.005</p> <p>ANGLES ± 1°</p> <p>FRACTIONS ± 1/64</p>	<p>FINISH</p> <p>AutoCad Generated</p>	
<p>THIRD ANGLE PROJECTION</p>	<p>AutoCad Generated</p>	<p>CRITICAL TO QUALITY CHARACTERISTIC</p>	<p>SCALE: -</p> <p>SHEET 2 OF 2</p>